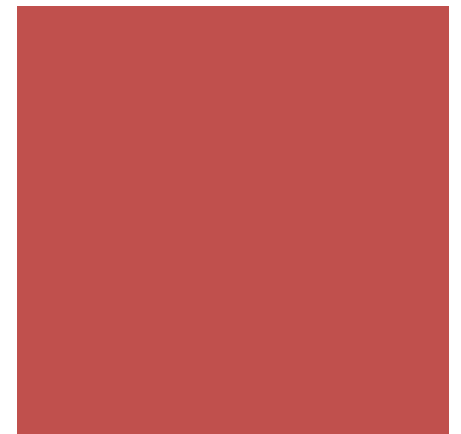




Integrated Student Support



Communities
In Schools

Richmond

+ K-12 Education and Poverty

Our Shared Challenge:

Today, the assumption that kids are coming to school with personal skills that will help them manage academic challenges is largely false due to the crushing poverty problem in our country and here in our city.

There is no longer the separation that schools manage academics and homes address non-cognitive skills such as

- confidence
- discipline,
- ambition,
- work ethics, etc.

Schools are expected to do it all.



+ Building Resilience

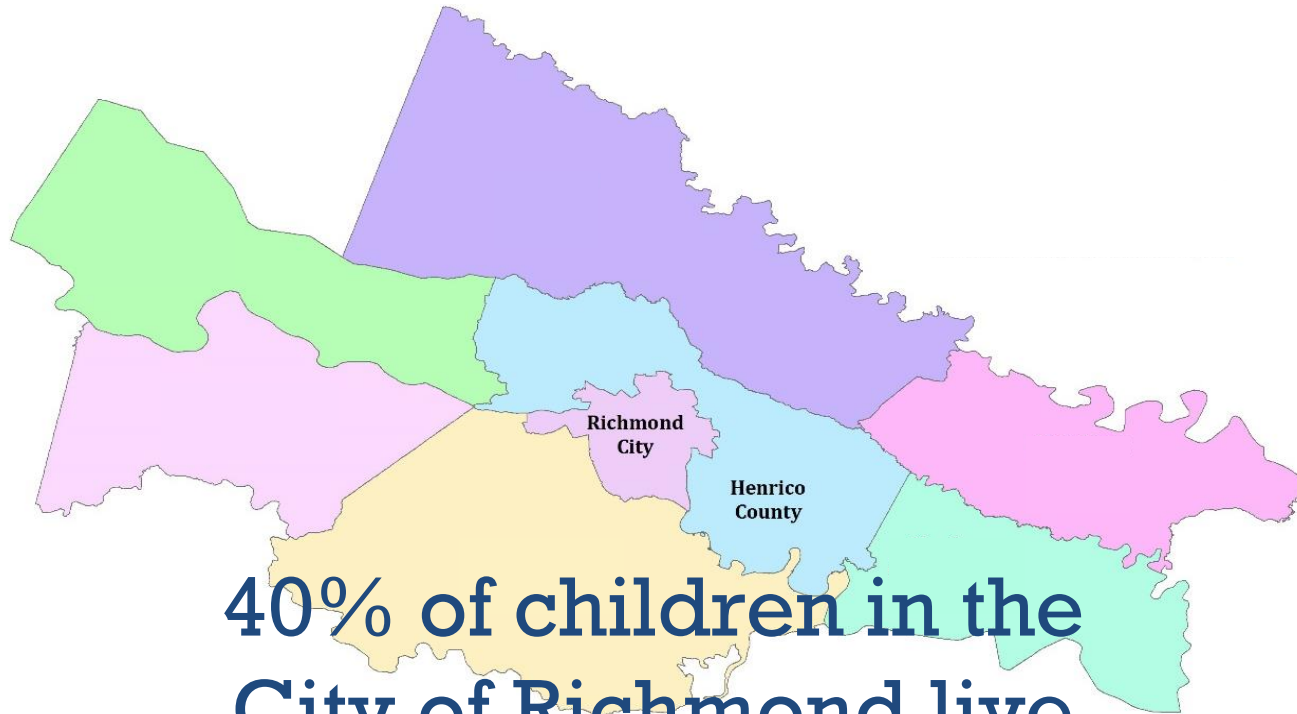


+ The Poverty Reality





In Richmond:



**40% of children in the
City of Richmond live
in poverty**



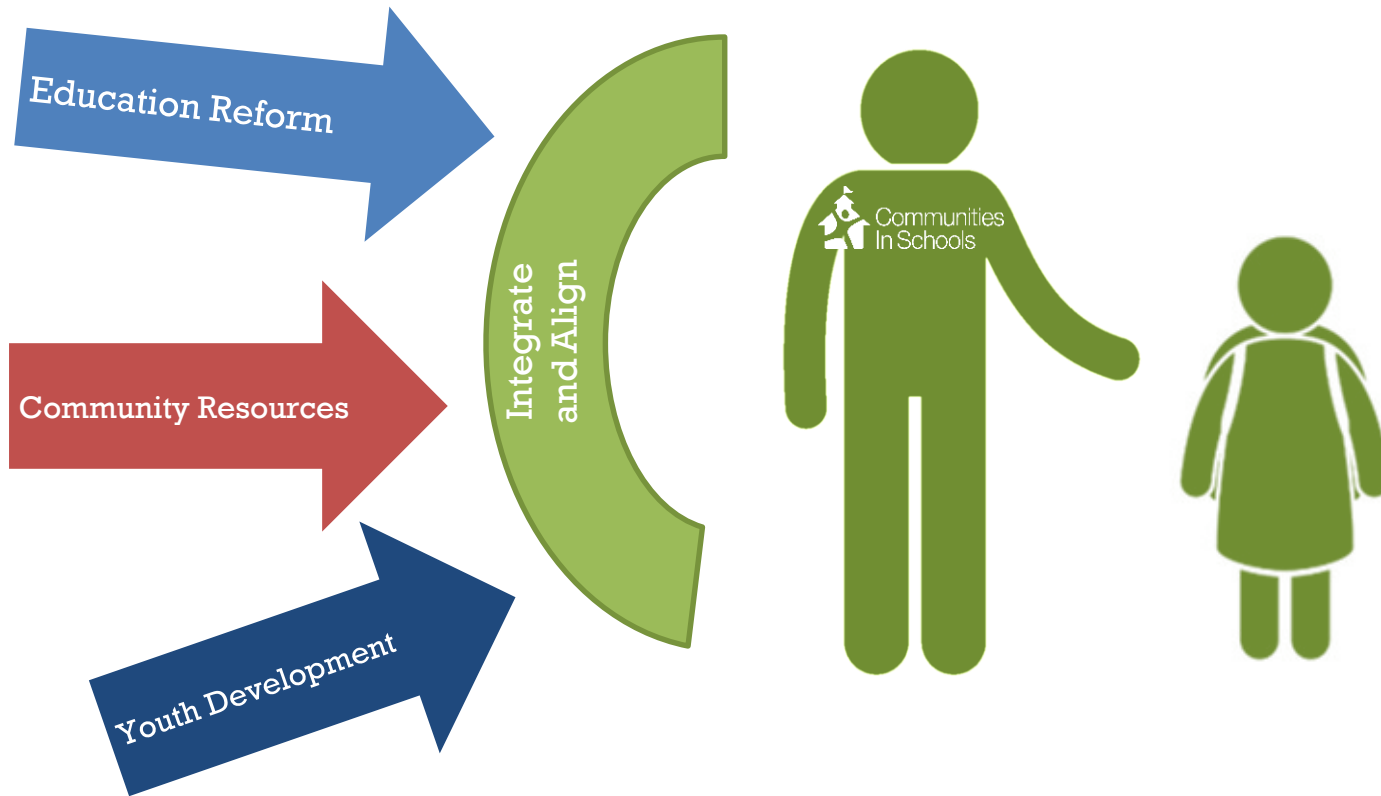
+ What Schools Do:

Education Reform

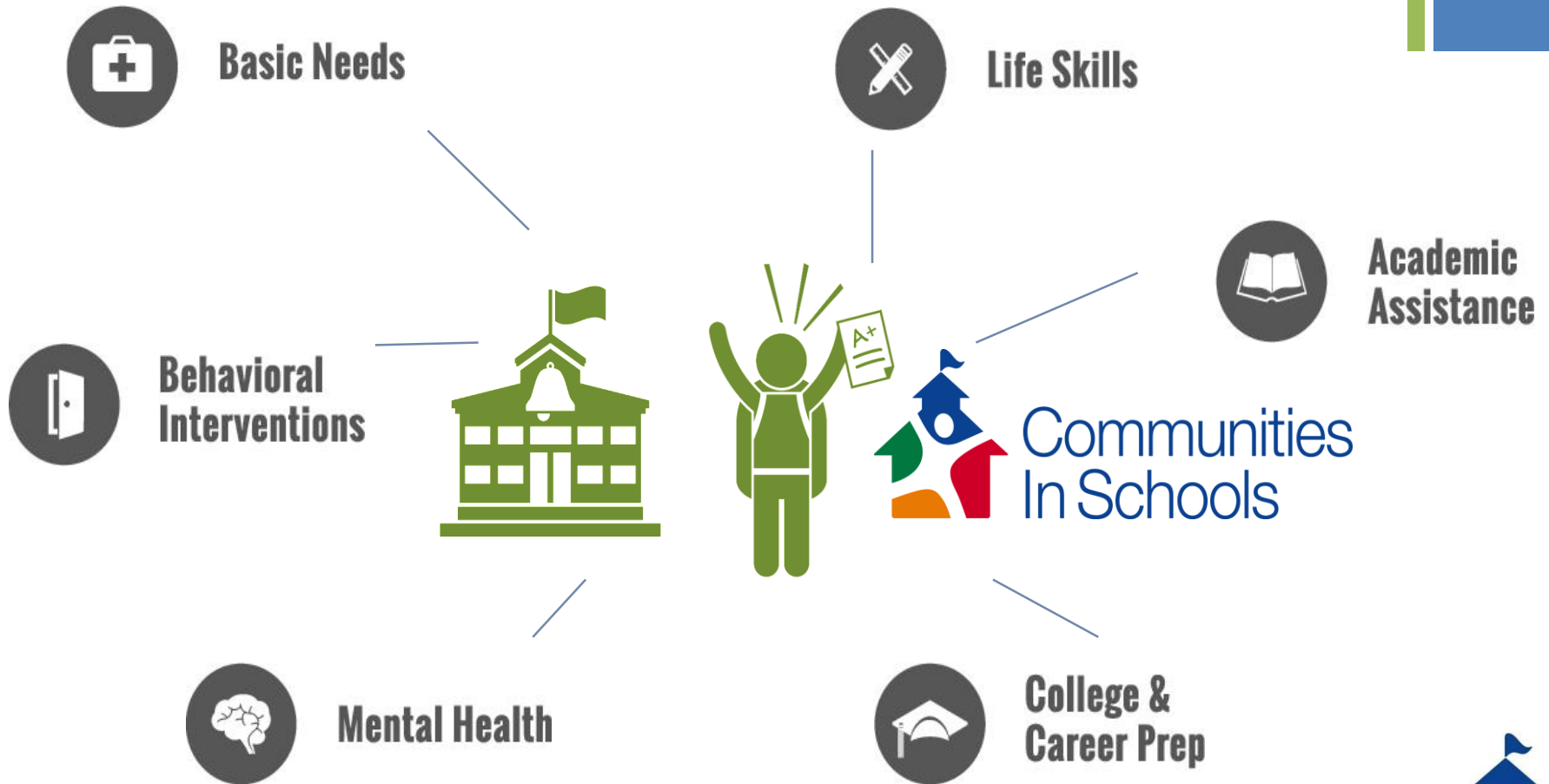
- Teacher quality
- Standardized testing
- Accountability
- High expectations
- Curriculum



+ How Integrated Services Help:



+ CIS in a School Community



+ The Five Basics

The CIS Model ensures that all kids in our schools have access to **FIVE Basics**:

1. **Safe place to learn and grow**
2. **One-on-one relationship with a caring adult**
3. **Healthy start and a healthy future**
4. **Marketable skill to use upon graduation**
5. **Chance to give back to peers and community**

We use the CIS Model at every site – elementary, middle or high school – to ensure that students are connected to these basic needs. We know that when these needs are met, students are able to thrive.





How it Works:

Every site hosts a CIS Site Coordinator (40 RPS and Henrico sites)

- Every spring, the Site Coordinator facilitates a **needs assessment**. This process determines the specific initiatives, partners and projects for the upcoming school year
- We survey teachers, parents and administrators about needs and gaps in service. We may hold focus groups so our stakeholders have a chance to talk and brainstorm together.
- We poll students about their needs. Questions may include:

Do you feel safe at school, at home, in your neighborhood?

Do you have a parent who is incarcerated?

Do you have enough food at home?

The results are a road map – the School Support Plan





Inside the School Support Plan:



Under the **Plan** we offer two sets of services –

- **Tier One Services** are enrichment and preventative activities designed for whole school participation. They can be anti-bullying programs or leadership programs or financial literacy activities. It can be a career day or an off-site field trip to the Governor's Mansion or Virginia Museum of Fine Arts or to the river

These service are intended to enhance the teaching and learning that is happening at school

- **Tier Two and Three Services** offer a range of intensive interventions that are targeted at the 15% of students who are most at-risk of dropping out of school.



+ Tracking and Outcomes:

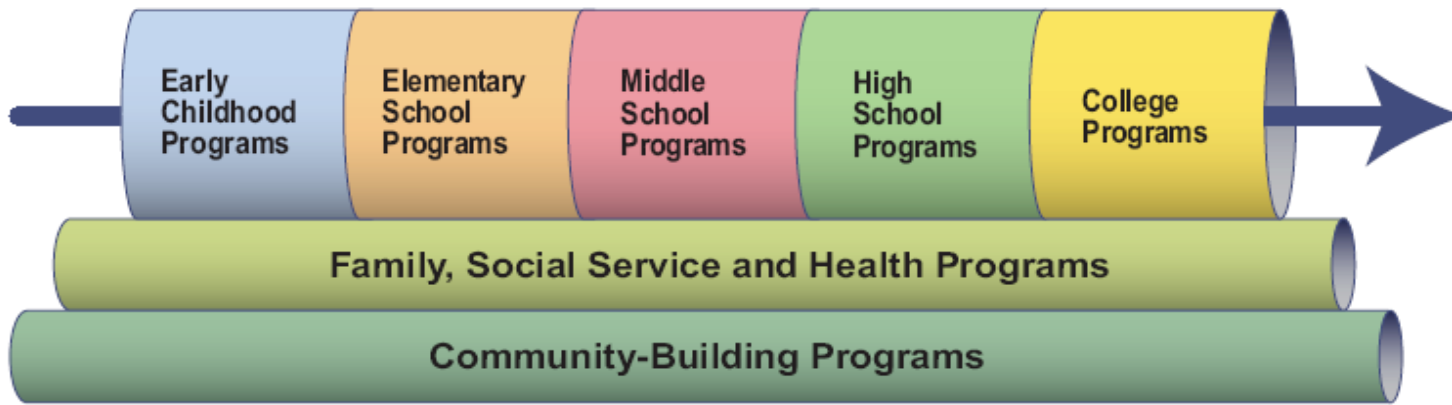
We use three indicators to determine our success with kids –

The ABC's

- **Attendance, Behavior and Course Completion**
- CIS monitors these indicators for all Tier 2 and 3 students.
- At the end of a school year, our benchmark for success looks like 70% of students making positive, measurable progress around attendance, behavior and course completion.
- Through these roles, CIS Site Coordinators manage the partners, volunteers and stakeholders working with the school throughout the year.



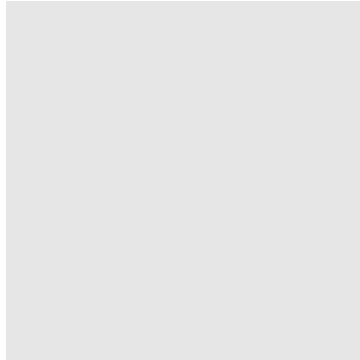
+ A Pipeline Approach to Graduation



CIS intentionally creates feeder patterns, connecting to early childhood and post-secondary programs, and developing transition activity across elementary, middle, and high schools so that students with the highest need have an uninterrupted "safety net" and the necessary support they need to be successful.



+ CIS Funding Model:



- Corporations: 23%
- Foundations: 12%
- Individuals: 27%
- RPS: 10%
- City of Richmond: 14%
- HCPS 14%
- United Way: 3%

2018 Operating Budget: \$3,502,000



RPS: \$2,865,168

- 19 Elementary Schools
- 7 Middle Schools
- 5 High Schools
- 2 Performance Learning Centers



Henrico: \$636,688

- 1 Elementary
- 4 Middle Schools
- 1 High School
- 1 Performance Learning Center

City of Richmond Restricted Funding \$400,000:

- Bellevue (271)
- Francis (551)
- George Mason (428)
- Ginter Park (511)
- JEB Stuart (353)
- Overby-Sheppard (376)
- Redd (442)

Richmond Public Schools contributes \$343,000 for CIS Services for a total public investment of \$743,000.

CIS leverages those funds with private philanthropy totaling \$2,122,168

