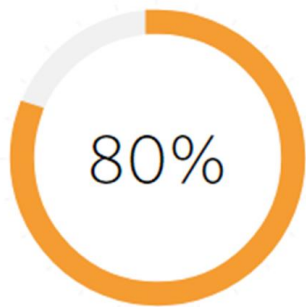


2020 OST Fall Partnership



What We Know



80% of brain growth happens in the first 3 years

Virtual learning is not practical for our youngest learners.

Both families and our workforce will be negatively impacted.



The Challenges

Child Care Providers in Richmond are striving to meet the needs of our working families...

BUT



of childcare centers report experiencing significant challenges in recruiting and retaining staff

48%

Indicated they would be forced to close after three months

23%

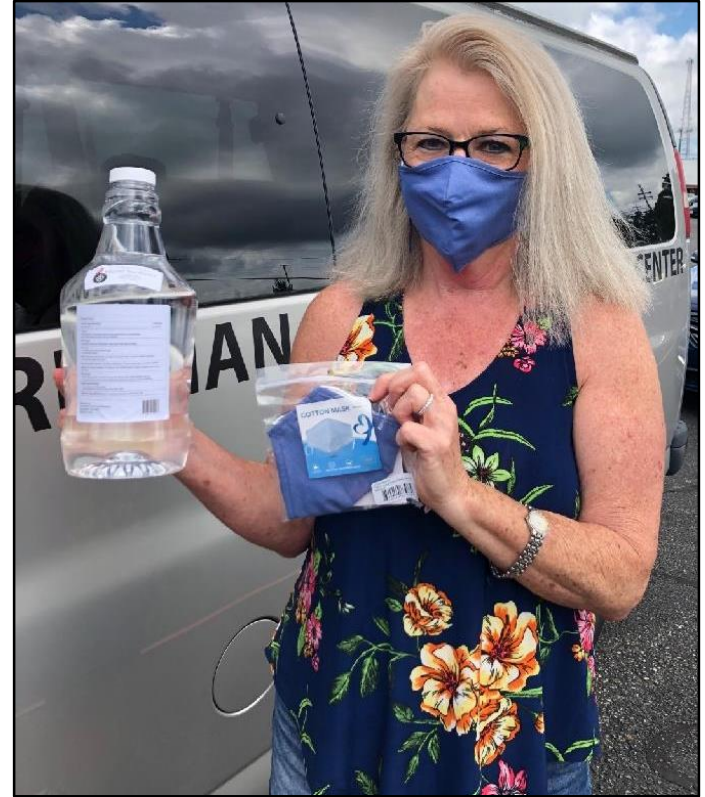
Indicated they would be forced to close after six months

In a regional survey with 110 child care providers responding, directors were asked how many months they anticipated their programs would be able to survive without financial assistance.

The Challenges

Child Care is Essential to families, workforce and economic recovery

- Impact felt dramatically by these women, minority-owned businesses
- Classroom sizes significantly impact revenue for providers
- Personal Protective Equipment and other essential supplies are not readily accessible
- Liability issues put providers at risk
- Most vulnerable families need child care and virtual schools make need for child care even more imperative



In May, partners mobilized to provide essential supplies to more than 200 child care providers in the Richmond Region.

The Solutions

Workable Cost Model for Child Care Providers

Public financing to support providers operating with reduced ratios; current average monthly loss \$18,000 for a center and \$1,200 for family Child Care *

Prioritize Access for Families

Equity gaps begin in early childhood and grow rapidly, putting children of color at an immediate disadvantage

Identify Supply Chains for Bulk Purchasing, PPE

Cleaning supplies, food and equipment continue to be in high demand

Incent Child Care and Schools Partnerships

Leverage strengths of both systems and develop solutions for families

* Federal Reserve Bank of Minneapolis June 24,2020



1. NextUp Online Enrichment Portal- Connecting youth with quality, live and on-demand enrichments that engage students in learning.
 - Online registration system with menu of programs
 - More than 25 providers delivering classes daily, Mon-Fri, in the areas of STEM, Arts, Sports/Wellness, and Career/Leadership
 - Accessible to all RPS middle schoolers, Parks & Rec, YMCA and any other congregate school-age care settings
 - Exploring elementary and high school program options
 - Will continue to assess impact on school and social-emotional outcomes.
2. Scheduling Supplemental On-site Enrichment Programs Where Requested.
3. Will return to school-site model when schools open, while also continuing the online model.

2020 Recreation Pop-Up



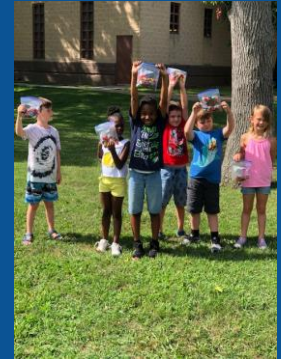
Summer Pop-Up

- ★ M-F, 8:00a-1:00p, Free
- Program operating outdoors, various activities
- Breakfasts and lunch meals served to youth
- “Camp in a Box” also available at sites



Fall Pop-Up

- ★ M-F, 3:00p -8:00p, Free
- Program operating outdoors, various activities
- Afternoon Snack/Dinner served to youth
- “Rec in a Box” also available at sites
- Interactive Park Experiences
(JRPS, History of Richmond, Cultural Arts)



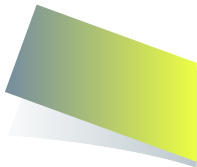
WHAT WE HAVE LEARNED

EVERY DAY IS CAMP!

- Health Department and CDC guidelines work
 - ✓ Check students before they enter
 - ✓ Clean, clean, clean
 - ✓ Be diligent
- Kids do have a hard time with social distancing, but pods are most important.
 - ✓ Don't mingle groups
 - ✓ Try to keep staff static
 - ✓ Space is always the issue
- Activities look different
 - ✓ Independent learning
 - ✓ Don't share supplies
 - ✓ Be creative



FOR YOUTH DEVELOPMENT®
FOR HEALTHY LIVING
FOR SOCIAL RESPONSIBILITY



EXPECTATIONS

YMCA

High Quality
Safe
Aligns with Mission

FAMILIES

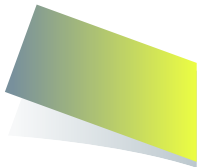
Affordable
Ability to Work
Fun/Creative

DISTRICTS

Fill the Gap
Underserved Communities
Flexibility
Child Care for Teachers



How can our YMCA provide a positive learning environment and enrichment activities for youth?



YMCA Student Success Centers

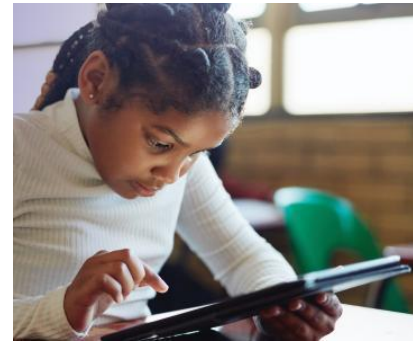
Morning Schedule

7:00 a.m. – 8:20 a.m. – RI/Small group activities

8:30 – 11:30 a.m. – Virtual Learning

11:30 – noon – Lunch

Noon – 1:30 p.m. – Virtual Learning



Afternoon Schedule

1:30 – 2:15 – Physical Activities

2:15 – 3:15 – Enrichment 1

3:15 – 4:15 – Enrichment 2

4:15 – 4:30 - Celebrations

4:30 – 6:00 - HW/Choices/RO



FOR YOUTH DEVELOPMENT®
FOR HEALTHY LIVING
FOR SOCIAL RESPONSIBILITY