

The logo consists of three interlocking, curved shapes in purple, green, and blue, resembling a stylized 'S' or a circular arrow.

Richmond INSPIRE

A Citywide Vision Plan for Parks,
Recreation & Community Facilities

Planning Commission Presentation No. 1
February 4, 2025

DESIGNWORKSHOP

621 Hillsborough St, Suite 202
Raleigh, North Carolina 27603

WELCOME!

AGENDA

1. About the Project
2. Elements of the Plan
3. Developing Recommendations
4. Next Steps
5. Discussion and Q/A



ABOUT THE PROJECT

GENERAL BACKGROUND

- » **First park system plan** for Richmond since the **1970s**.
- » **Funding** for the plan came as part of the **American Rescue Plan Act** with the support of the Mayor and City Council.
- » Richmond INSPIRE **builds upon other recent planning** efforts in Richmond.



WHAT IS A PARK AND RECREATION VISION PLAN?

What it is

A long-range planning tool.

A visionary document that sets values and goals.

An opportunity to weigh in and be heard.

What it is NOT

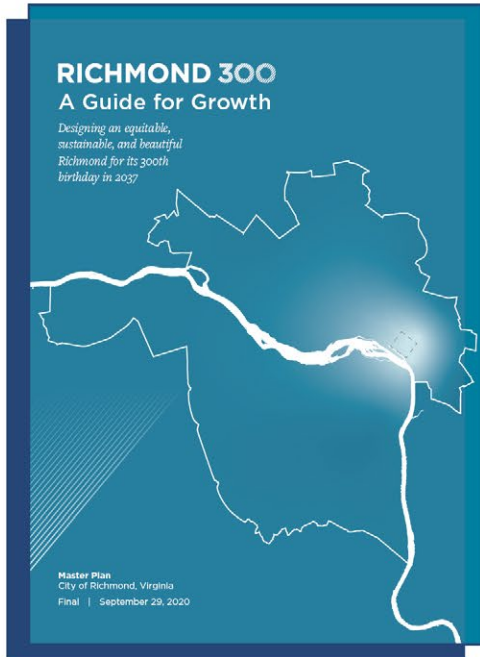
A detailed design proposal for a specific park, neighborhood or facility.

A method to approve specific capital expenses. (It informs CIP.)

Operations model or financial budget.



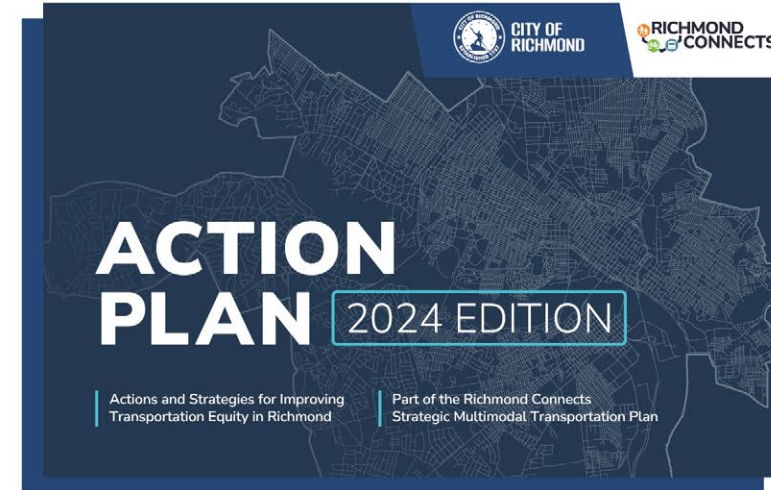
BUILDING ON PREVIOUS PLANS



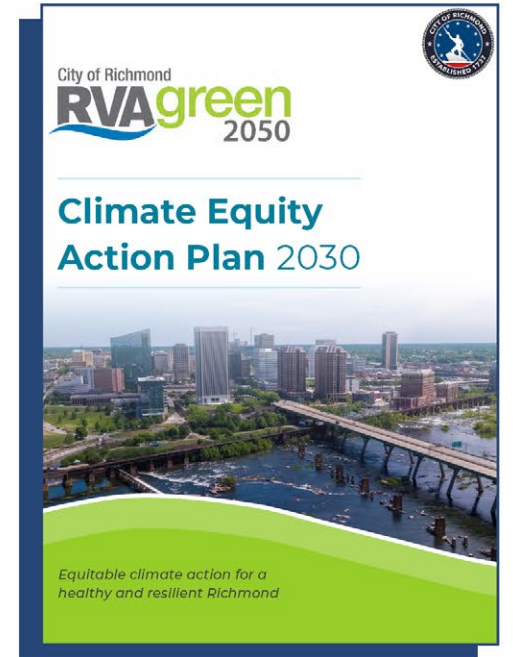
Richmond 300



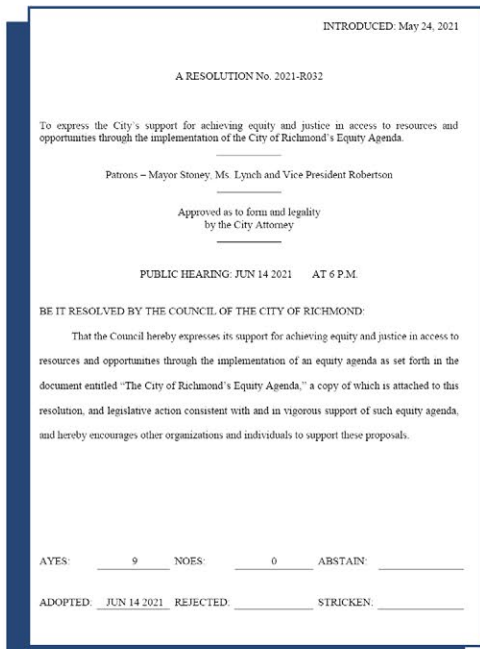
James River Park System Master Plan



Richmond Connects



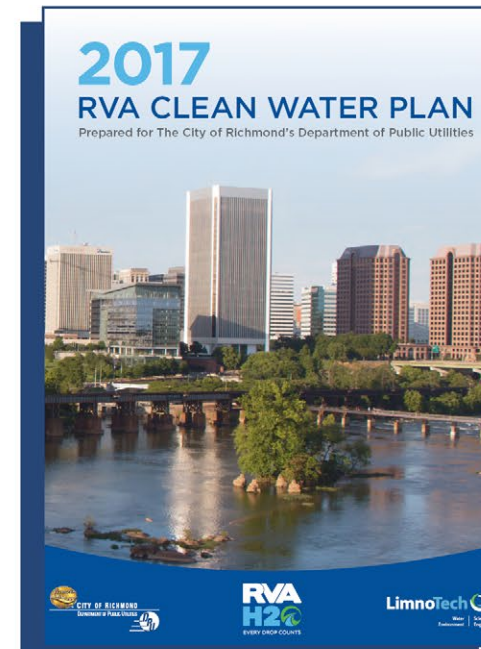
RVAgreen 2050



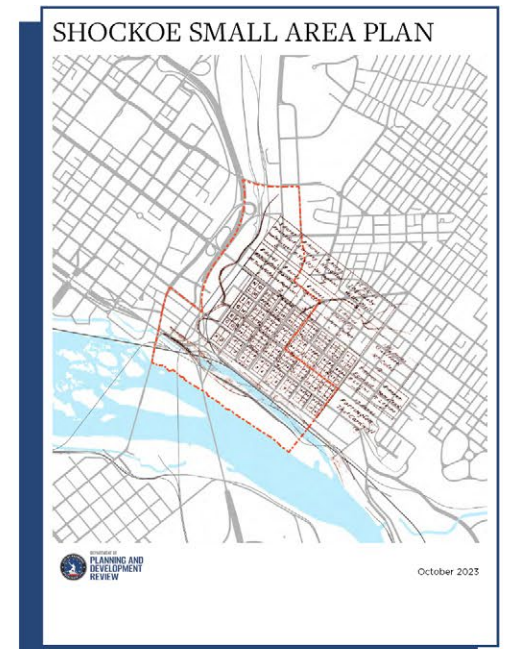
Mayor's Equity Agenda



Bicycle Master Plan



RVA H2O Clean Water Plan



Small Area Plans



PROJECT SCHEDULE



We Are Here!



PLAN PURPOSE



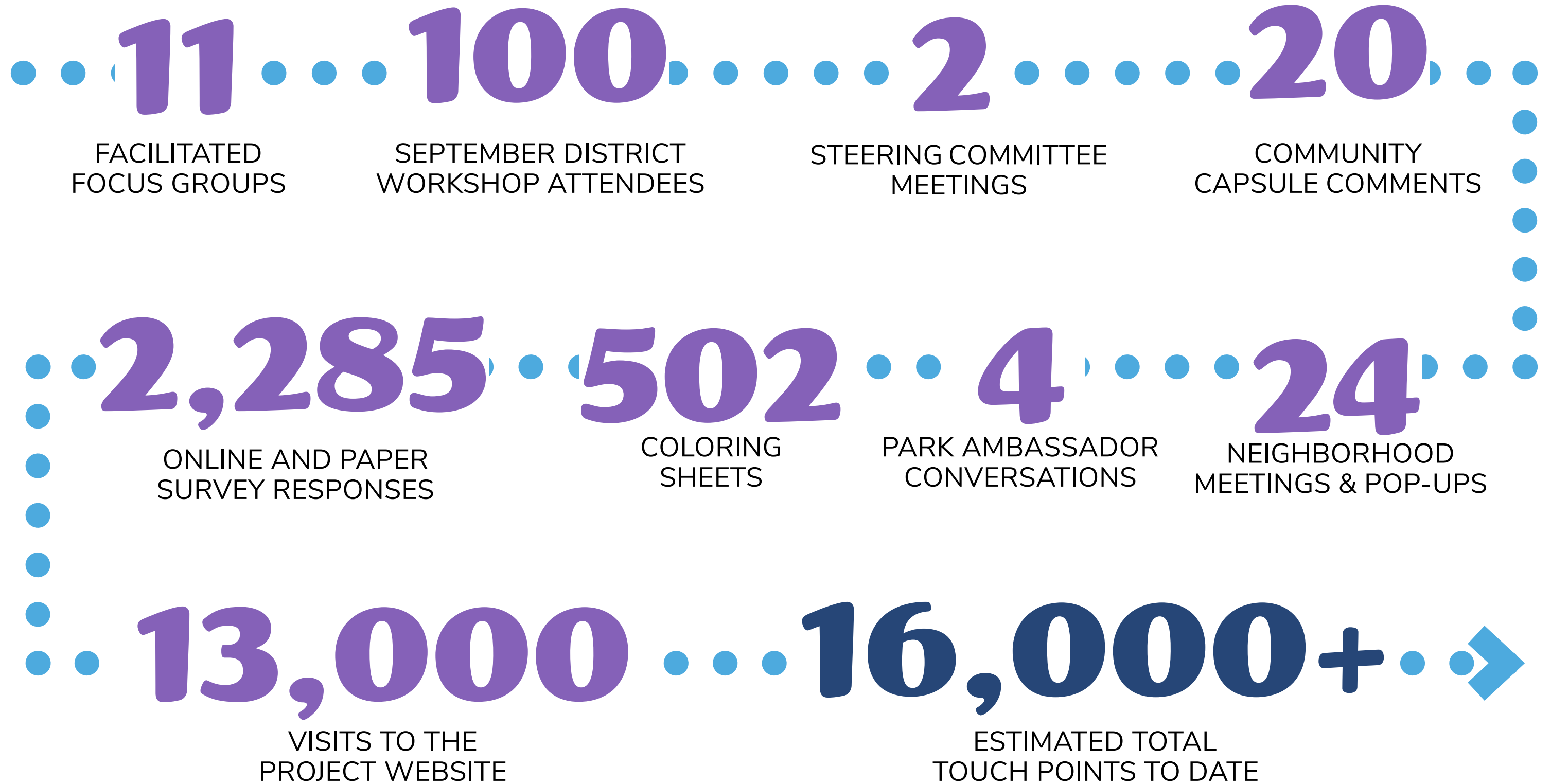
The community's overarching vision for Richmond parks and recreation, and the driving force for the plan.

Richmond's parks, open space, and community centers are high-quality, beautifully maintained, and loved by all. They strengthen neighborhoods, inspire healthier lives, connect communities, and create the fabric of a resilient and beautiful city.

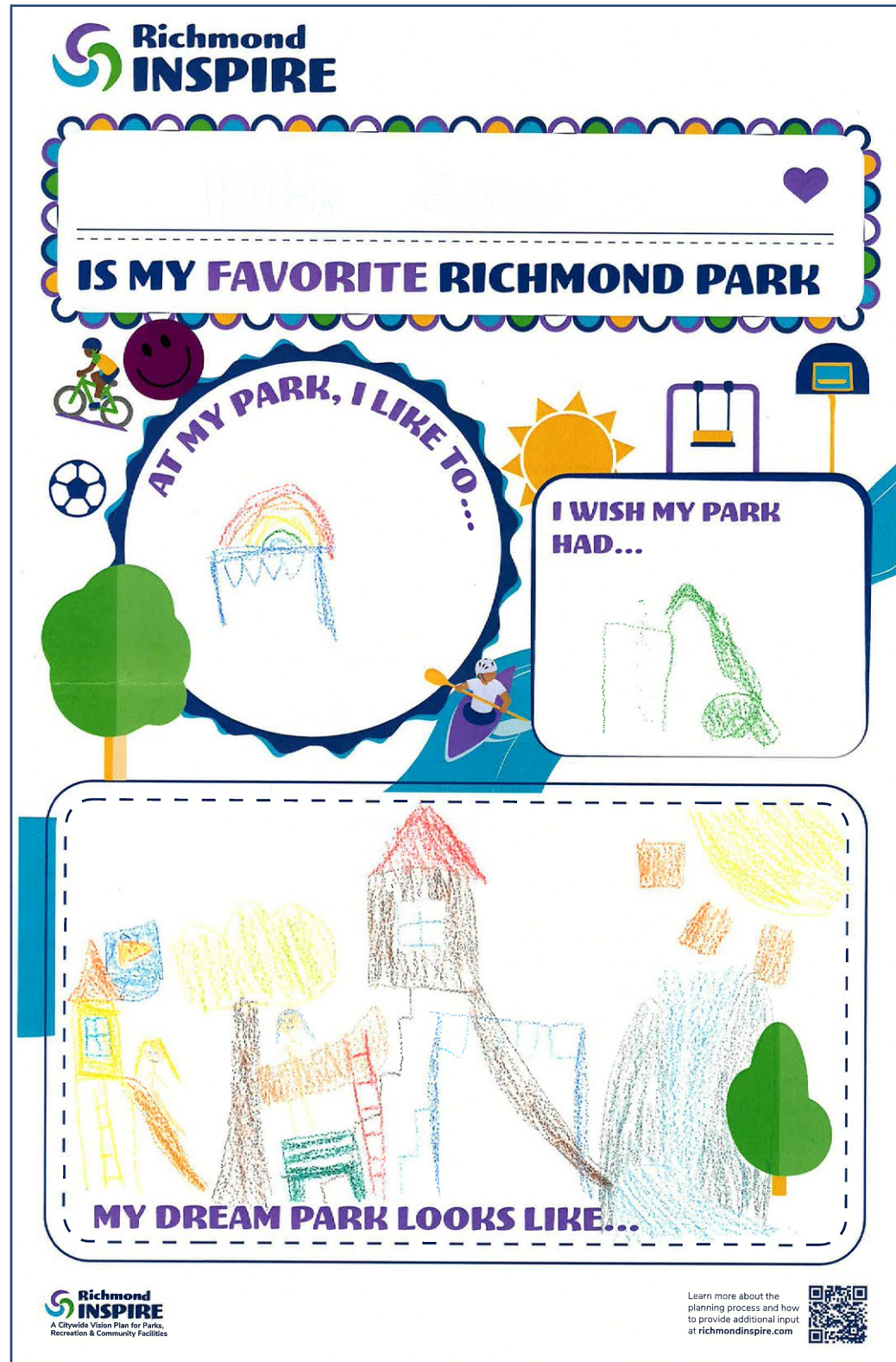


ELEMENTS OF THE PLAN

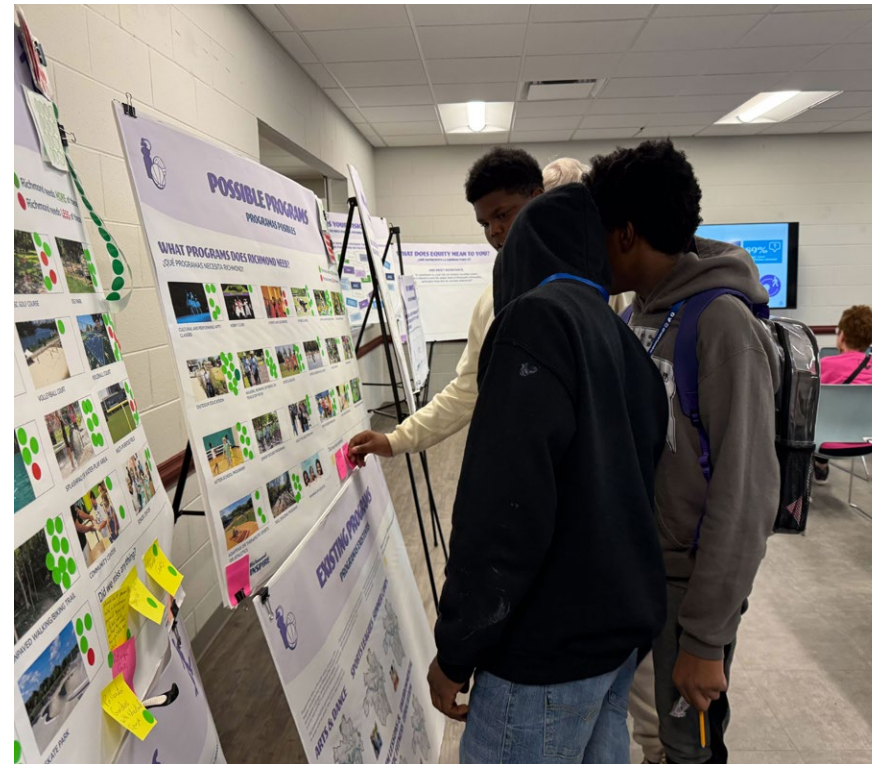
A COMMUNITY DRIVEN PLAN



COMMUNITY ENGAGEMENT SNAPSHOT



COMMUNITY ENGAGEMENT SNAPSHOT



“

I started coming to this park with my 6-month-old for the shaded swings in the summer. Before too long we began making friends with other kids and parents. Two years later my daughter now refers to this park as the “Friend Park”

- An Anonymous “Favorite PRCF Moment” from the PRCF Stories and Ideas Capsule.

”

“

Larus Park has awesome trails! Was fun to discover and explore when out on a long run.

- An Anonymous “PRCF Opportunity or Hidden Gem” from the PRCF Stories and Ideas Capsule.

”



“

Sometimes “more is less.” And that’s true for Byrd Park. Just having open space is fabulous. Easy to bike around, walk, stroller or wheelchair. My only complaint...goose poop!

- An Anonymous “My Favorite Park/Trail/Facility” from the PRCF Stories and Ideas Capsule.

”



DRIVING PRINCIPLES

Access

All Richmonders live within a 10-minute walk of a high-quality park or greenway. All parks are served by multimodal routes that are safe, comfortable, and beautiful.

Belonging

Everyone feels welcome and safe in Richmond's parks and community centers. Every park celebrates local culture and is authentic to its local sense of place.

Equity

Richmond's park and recreation investments are community-driven and accountable. Park projects make their neighborhoods stronger by boosting the local economy and improving quality of life for neighbors. The City is proactive in preventing parks-related displacement.

Environment

Richmond's system of parks makes the city as a whole cooler, healthier, more beautiful, and more resilient. PRCF is a model for green design and sustainability.

Quality

Richmond's parks, open spaces, greenways, and community centers are built and maintained according to clear citywide standards. The City invests in PRCF staff as system stewards, experts, and ambassadors. Richmond's parks are supported over time by sustainable funding and partnerships.

Community

Richmond's parks and community centers bring people together through diverse and inclusive programming. Recreation centers are engines of social, economic, and environmental resilience.



BIG MOVES

ACCESS



WALKABLE
PARKS FOR
ALL



CONNECTED
SYSTEM

BELONGING



SAFE AND
WELCOMING
PARKS



CULTURAL
PRESERVATION
AND
CELEBRATION

EQUITY



COMMUNITY-
DRIVEN
SYSTEM



BEAUTIFUL
PARKS, STRONG
NEIGHBORHOODS

COMMUNITY



RECREATION
AND
PROGRAMMING
FOR ALL



PARK-BASED
URBAN
AGRICULTURE



COMMUNITY
RESILIENCE
HUBS

ENVIRONMENT



COOL, HEALTHY,
RESILIENT CITY

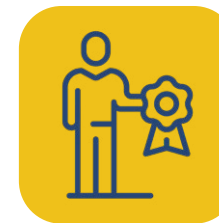


GREEN
DESIGN AND
SUSTAINABILITY

QUALITY



STANDARD OF
EXCELLENCE



WORLD-
CLASS STAFF

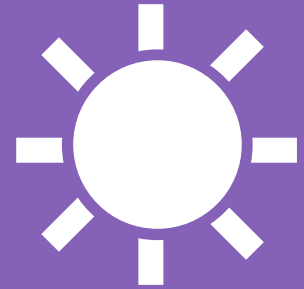


SUSTAINABLE
FUNDING AND
PARTNERSHIPS



NEEDS ASSESSMENT - SURVEY

57%



OF PARKS **DO NOT**
HAVE ENOUGH **SHADE** TO BE
COMFORTABLE ON A HOT DAY

45%

MAKE A
GOOD FIRST
IMPRESSION

85%



DO NOT HAVE
WAYFINDING SIGNAGE

3%



HAVE ACCESSIBLE
PLAYGROUNDS

15%

HAVE ADA-
ACCESSIBLE
ENTRY
PATHWAYS

41%

ARE NOT
ACCESSIBLE
BY SIDEWALK



NEEDS ASSESSMENT - LEVEL OF SERVICE



86

PLAYGROUNDS



40

DIAMOND FIELDS



71

BASKETBALL
COURTS



62

TENNIS COURTS



28

PICKLEBALL
COURTS



31

RESTROOMS



22

COMMUNITY/REC
CENTERS



15

SWIMMING
POOLS



4

DOG PARKS



3

SKATEPARKS

12.2

Acres per 1,000
Residents

13.3

National Median,
Acres per 1,000
Residents

7%

City Area Set
Aside as Parkland

10%

National Median,
City Area Set
Aside as Parkland

FIGURES: COMPARED AGAINST TPL PARKSERVE NATIONAL MEDIAN NUMBERS USING RICHMOND'S CURRENT POPULATION AND DRAFT INVENTORY FIGURES.





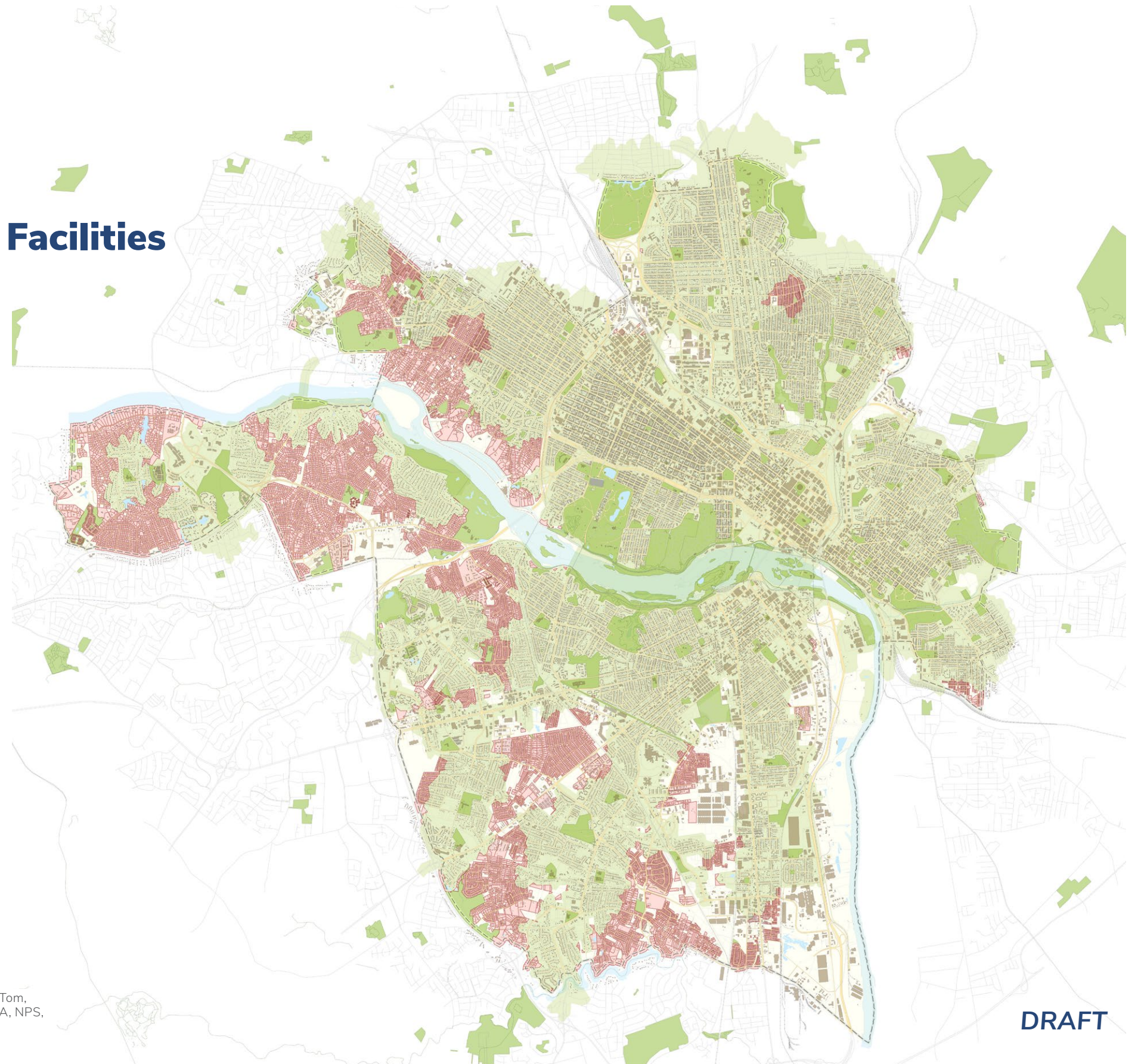
DEVELOPING RECOMMENDATIONS

ACCESS

WALKABLE PARKS FOR ALL

-  Residential Areas
-  10-Minute Walk to Parks and Facilities

87.3% OF RESIDENTS ARE WITHIN A 10-MINUTE WALK TO ANY PARK OR FACILITY



SOURCES: City of Richmond, County of Henrico, VGIN, ESRI, TomTom, Garmin, SafeGraph, GeoTechnologies, Inc, METI/NASA, USGS, EPA, NPS, USDA, USFWS, Design Workshop, Hana Engineers

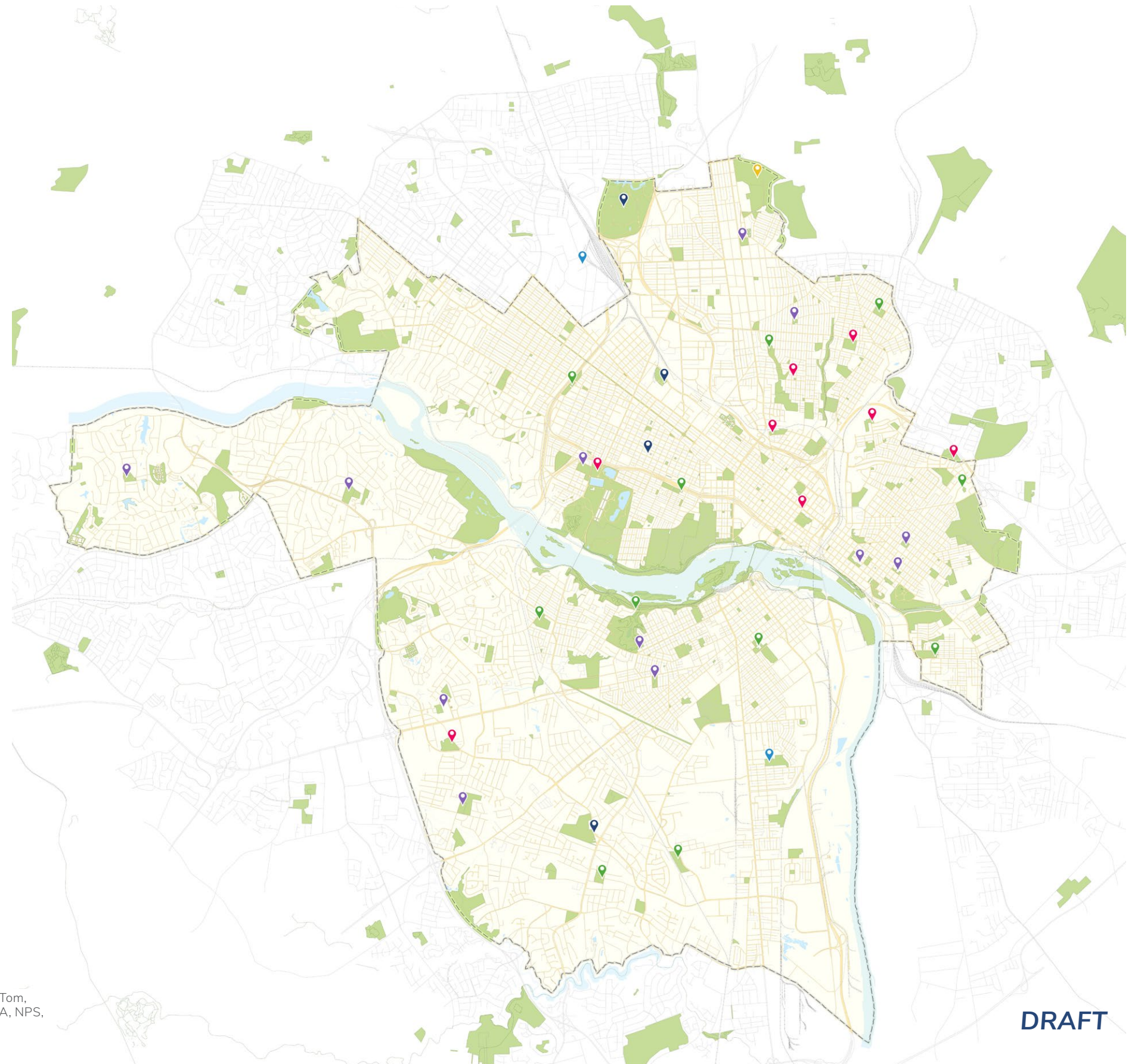
DRAFT



BELONGING

SAFE AND WELCOMING PARKS

-  **After School Program**
-  **Aquatics**
-  **Art and Dance**
-  **Athletics**
-  **Recreation**
-  **Spring and Summer Camp**



SOURCES: City of Richmond, County of Henrico, VGIN, ESRI, TomTom, Garmin, SafeGraph, GeoTechnologies, Inc, METI/NASA, USGS, EPA, NPS, USDA, USFWS, Design Workshop, Hana Engineers

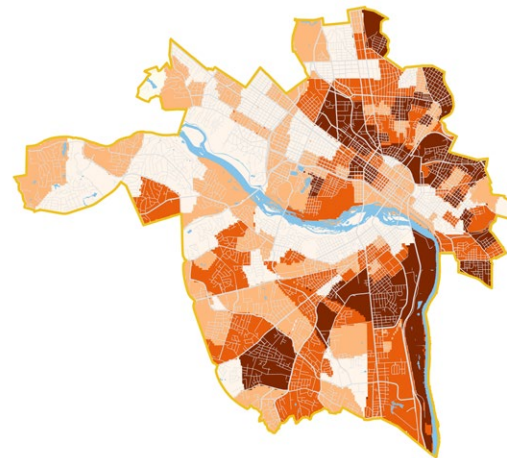
DRAFT



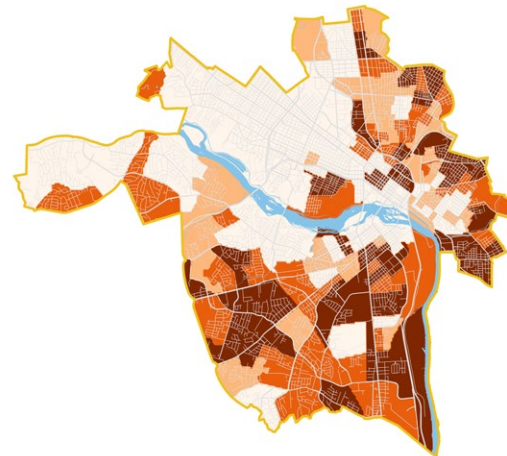
EQUITY

COMMUNITY-DRIVEN SYSTEM

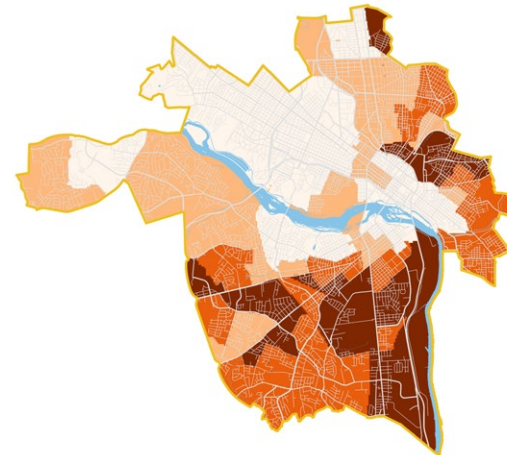
ECONOMIC STABILITY



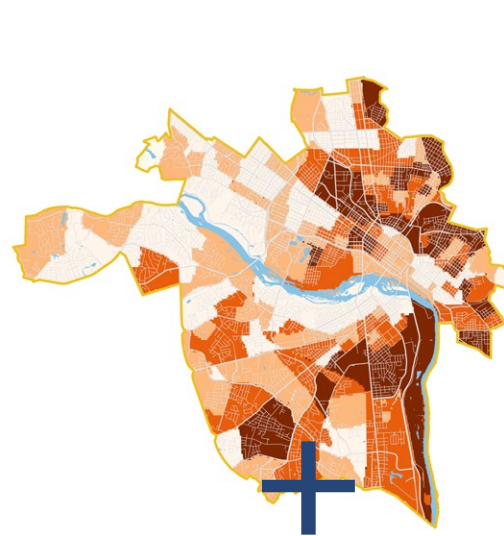
EDUCATION ACCESS & QUALITY



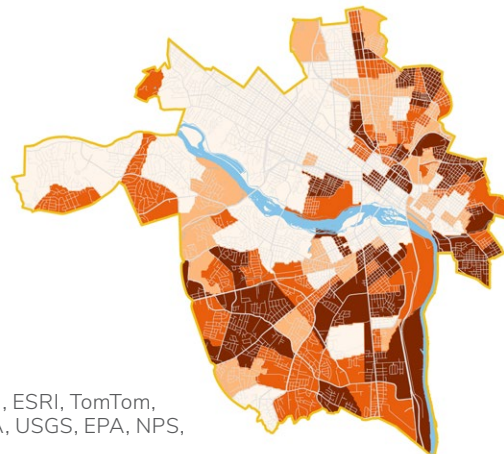
HEALTH



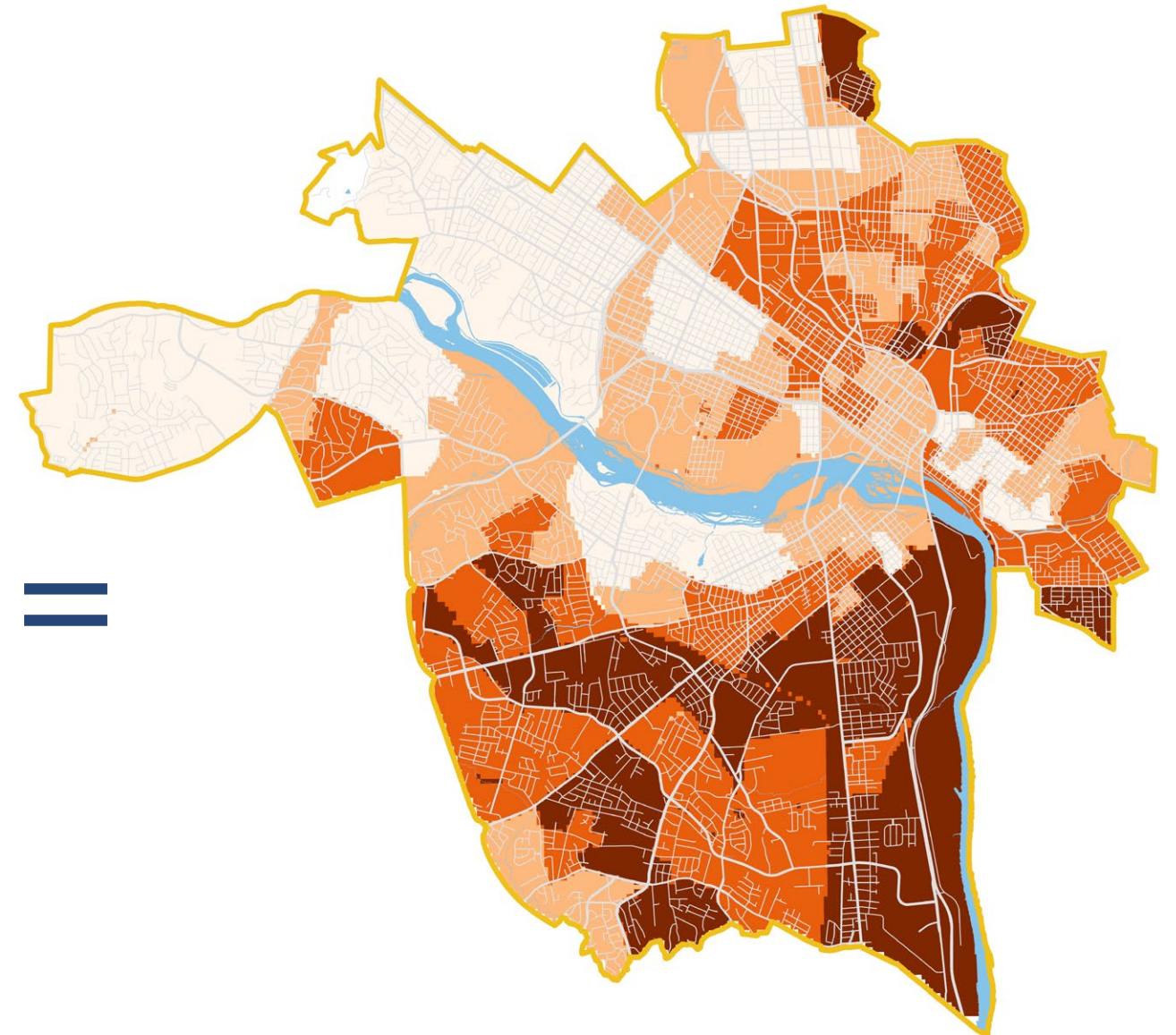
SOCIAL & COMMUNITY CONTEXT



NEIGHBORHOOD & BUILT ENVIRONMENT



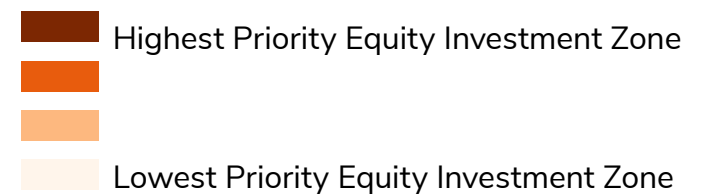
EQUITY INVESTMENT ZONES



DRAFT








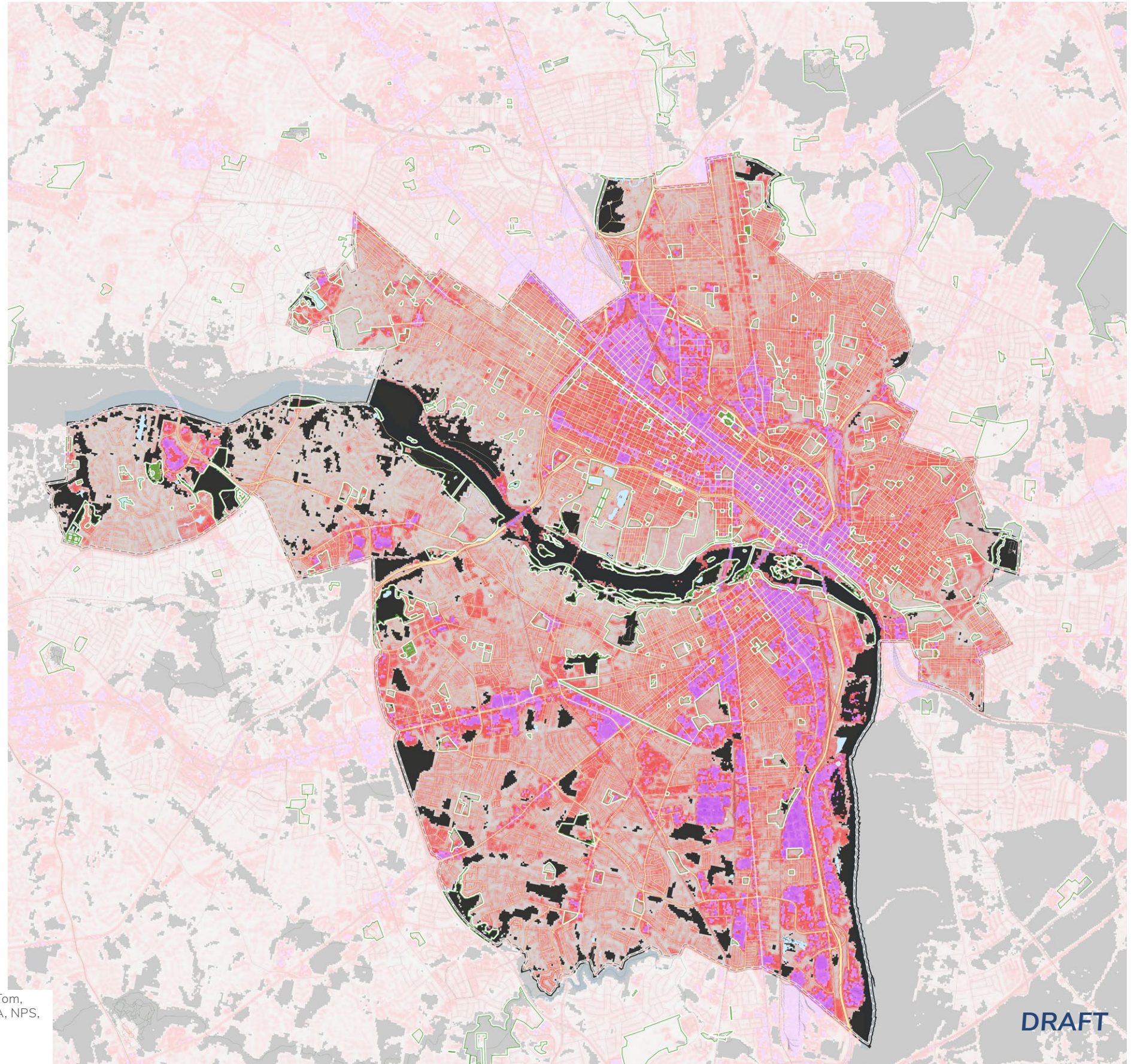
SOURCES: City of Richmond, County of Henrico, VGIN, ESRI, TomTom, Garmin, SafeGraph, GeoTechnologies, Inc, METI/NASA, USGS, EPA, NPS, USDA, USFWS, Design Workshop, Hana Engineers



ENVIRONMENT

COOL, HEALTHY, RESILIENT CITY

-  **Parks**
-  **Pervious**
-  **Somewhat Pervious**
-  **Somewhat Impervious**
-  **Impervious**



SOURCES: City of Richmond, County of Henrico, VGIN, ESRI, TomTom, Garmin, SafeGraph, GeoTechnologies, Inc, METI/NASA, USGS, EPA, NPS, USDA, USFWS, Design Workshop, Hana Engineers

DRAFT

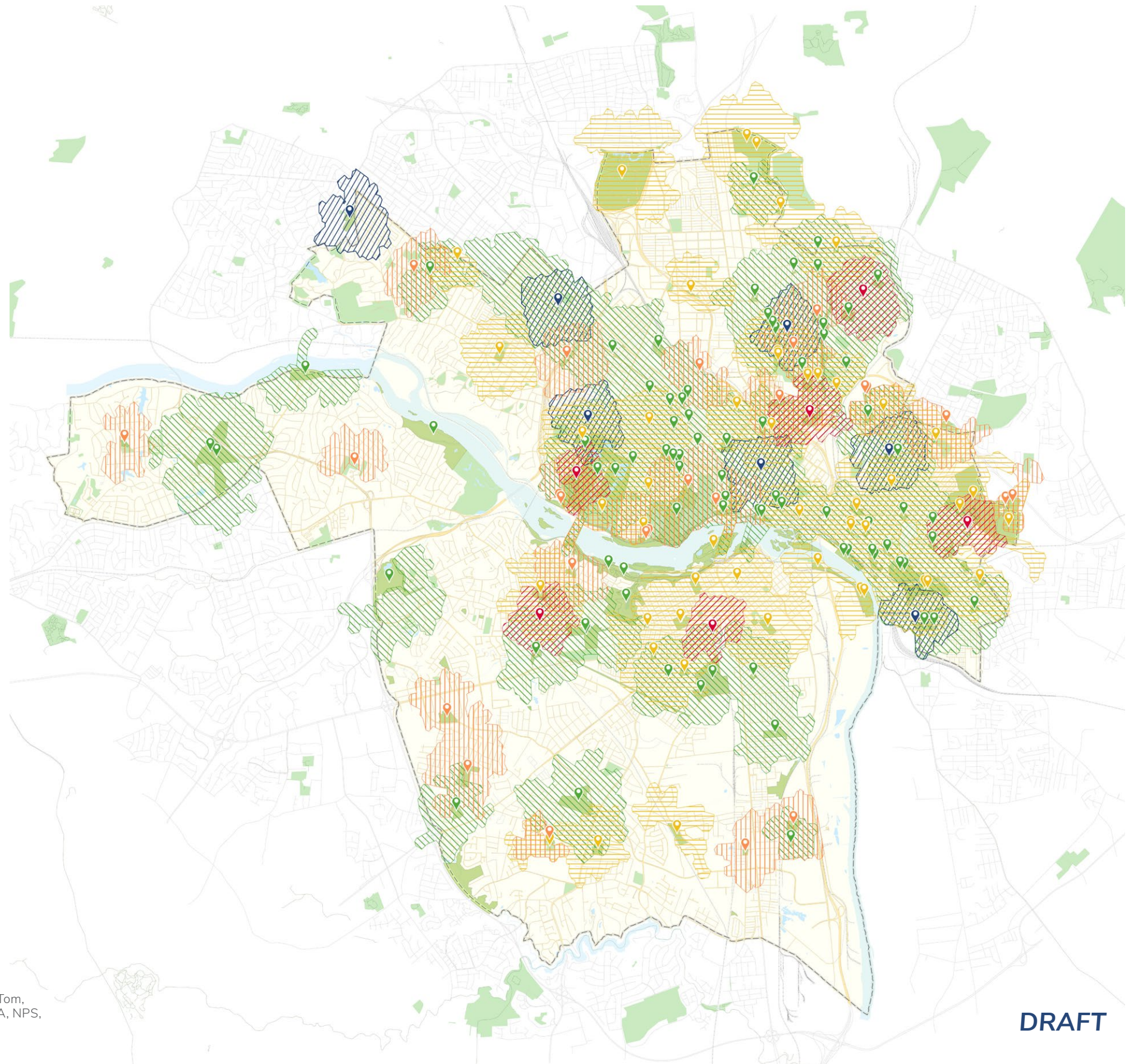
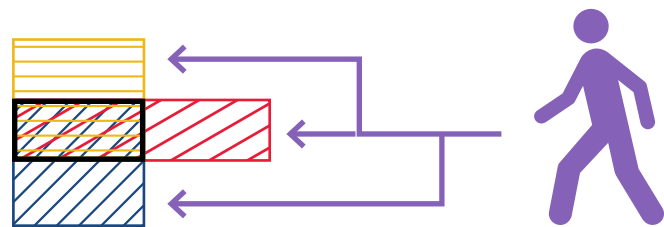


QUALITY

STANDARD OF EXCELLENCE

-  **Excellent Condition**
-  **Good Condition**
-  **Fair Condition**
-  **Poor Condition**
-  **Very Poor Condition**

WALKSHEDS THAT OVERLAP
MEAN RESIDENTS IN THAT
AREA CAN WALK TO PARKS
OR FACILITIES IN DIFFERENT
CONDITIONS.



SOURCES: City of Richmond, County of Henrico, VGIN, ESRI, TomTom, Garmin, SafeGraph, GeoTechnologies, Inc, METI/NASA, USGS, EPA, NPS, USDA, USFWS, Design Workshop, Hana Engineers

DRAFT



COMMUNITY

COMMUNITY RESILIENCE HUBS

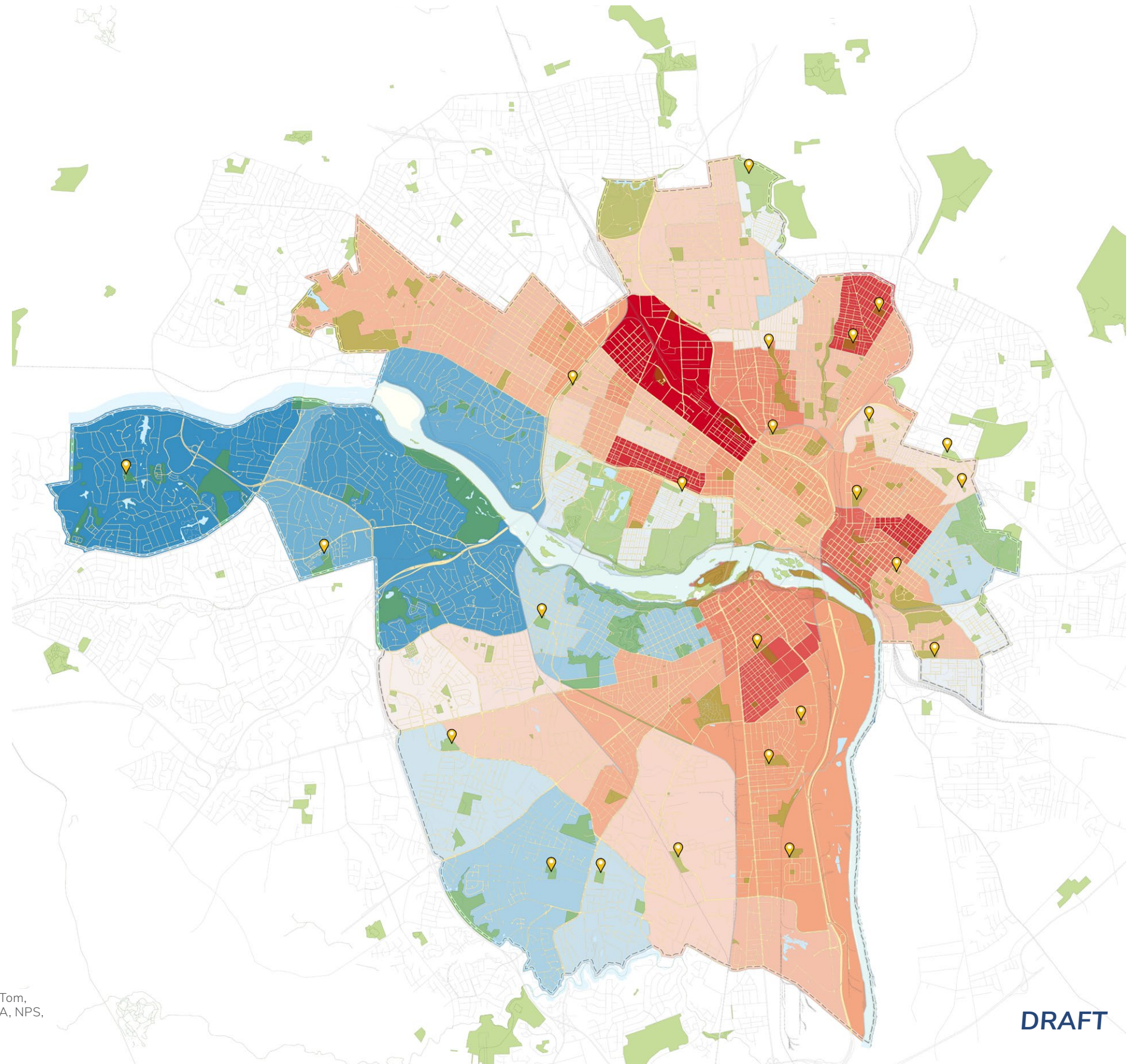


Community Center



+2 hotter

-2 cooler



0 5,000 ft



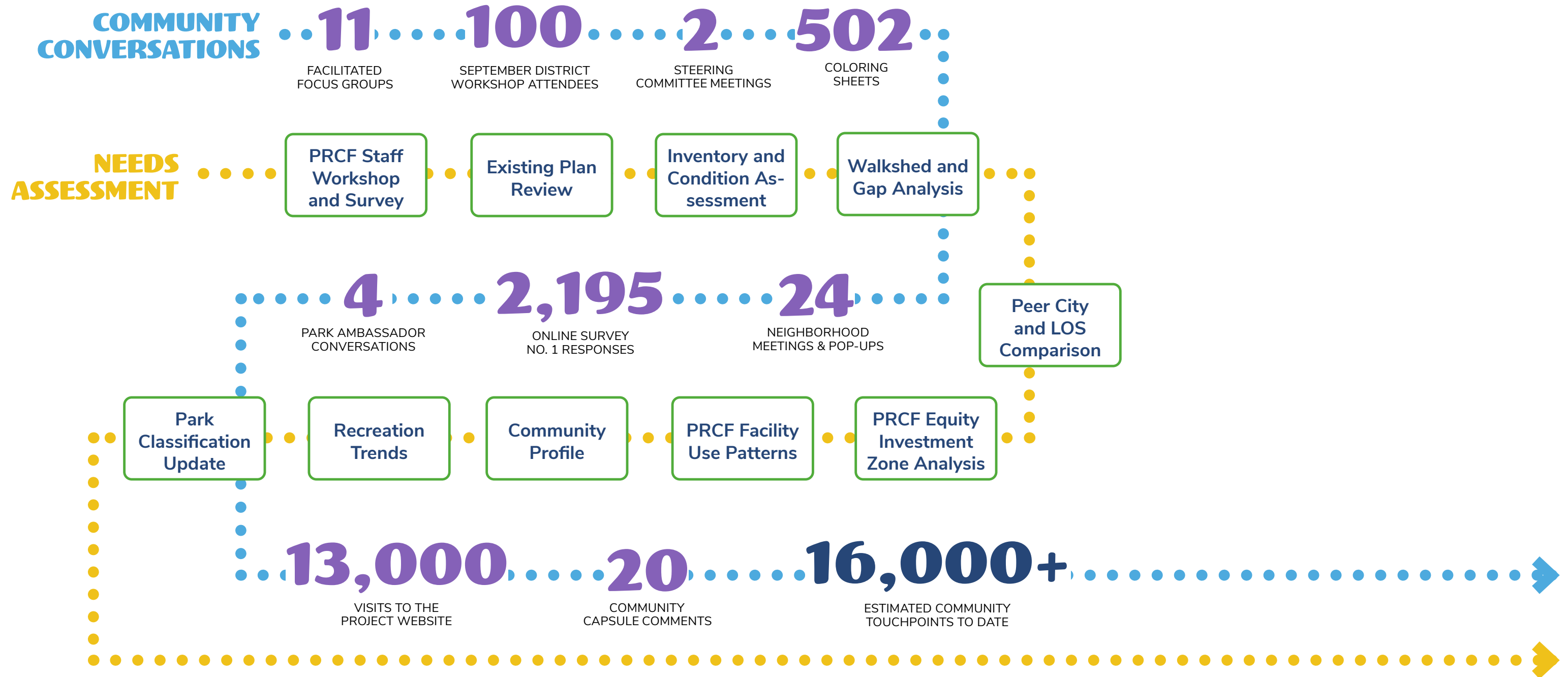
SOURCES: City of Richmond, County of Henrico, VGIN, ESRI, TomTom, Garmin, SafeGraph, GeoTechnologies, Inc, METI/NASA, USGS, EPA, NPS, USDA, USFWS, Design Workshop, Hana Engineers

DRAFT

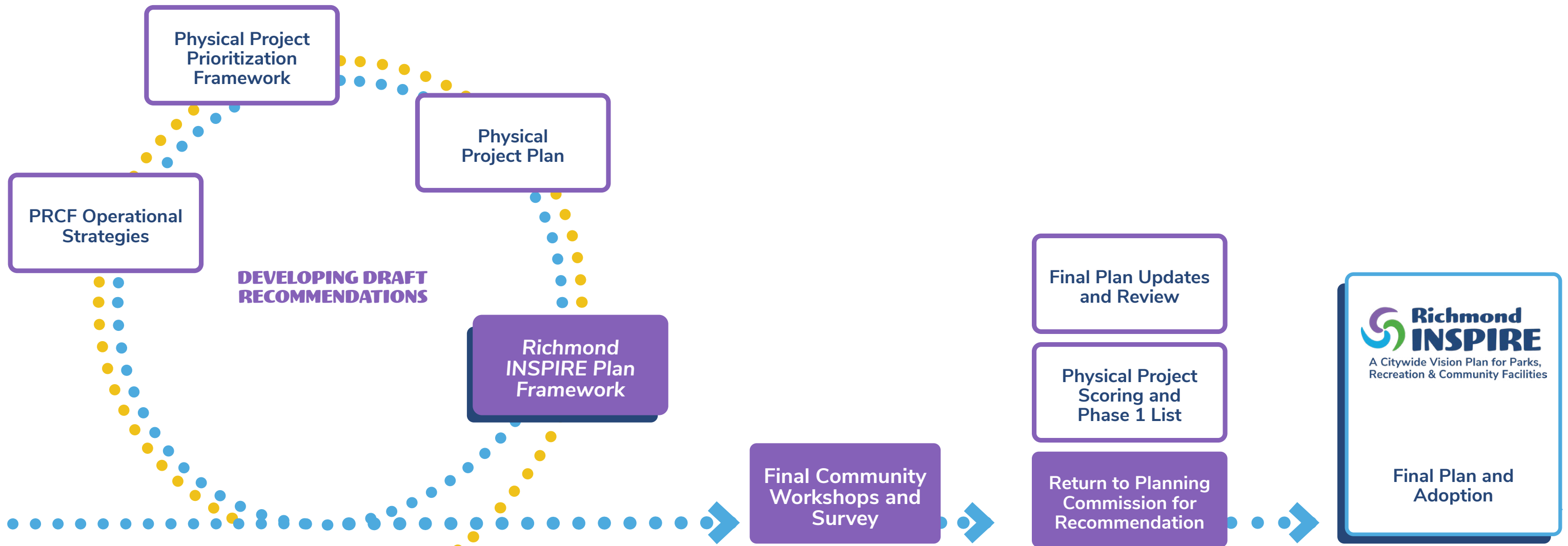


WHAT'S NEXT

HOW WE GOT HERE



NEXT STEPS



DISCUSSION AND Q/A

VISIT [RICHMONDINSPIRE.COM](https://richmondinspire.com) TO LEARN MORE