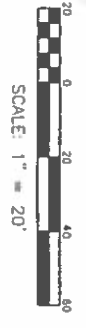
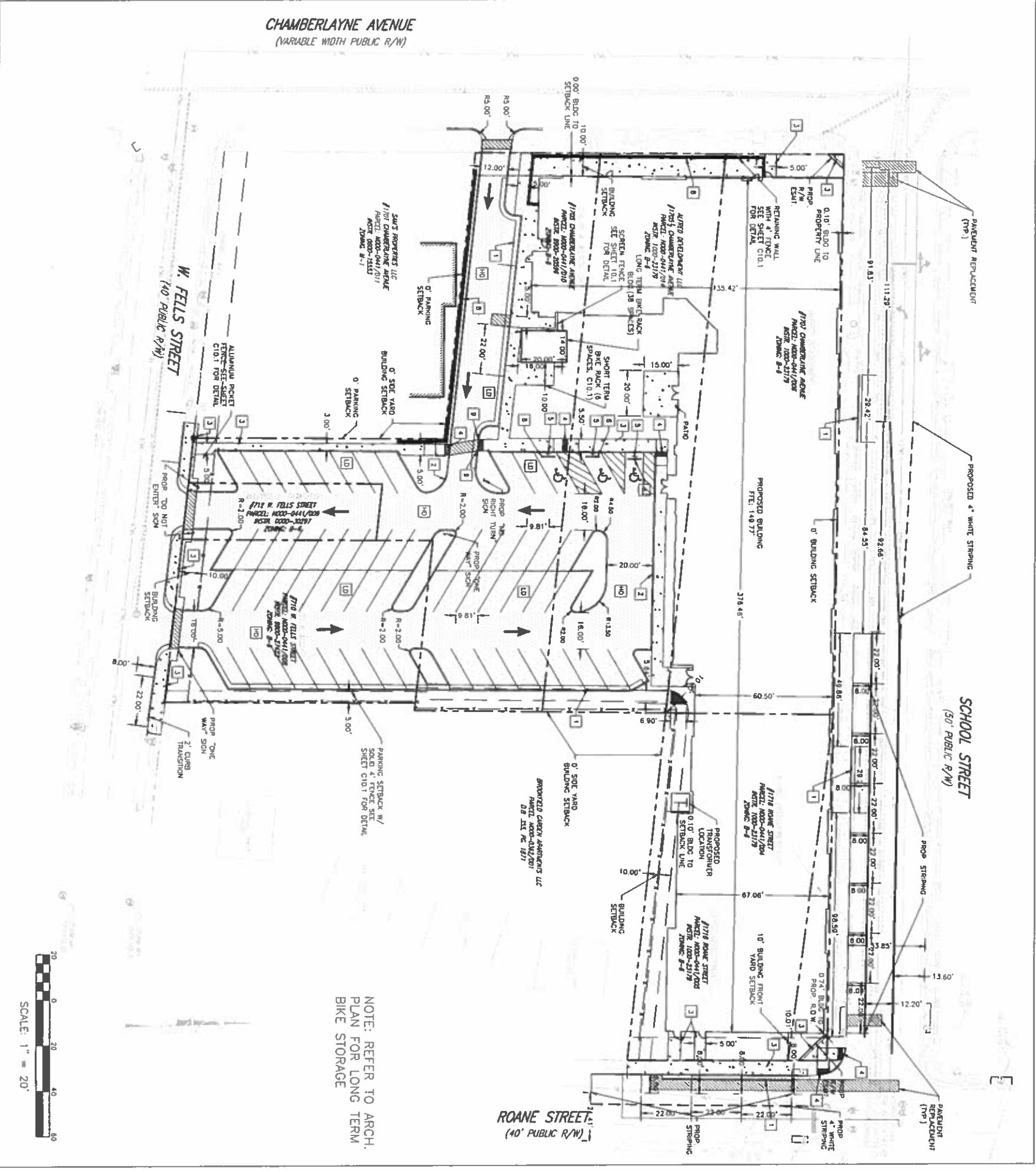


- LEGEND:**
- 1 CG-6 (CURB)
 - 2 CG-2 (CURB)
 - 3 CONCRETE SIDEWALK
 - 4 CG-12 W/TRUNCATED DOWES
 - 5 HC SIGN
 - 6 WHEEL STOP
 - 7 STOP SIGN W/ 24" STOP BAR
 - 8 RETAINING WALL SEE ARCHITECTURAL PLANS
 - 9 TURN DOWN CURB OVER 2.0'
 - 10 HEAVY DUTY PAVING
 - 11 LIGHT DUTY PAVING



NOTE: REFER TO ARCH. PLAN FOR LONG TERM BIKE STORAGE

SCHOOL STREET APARTMENTS
 PLAN OF DEVELOPMENT
 LAYOUT PLAN

DATE BY	JAT
DESIGNED BY	JAT
CHECKED BY	CMB
DATE	01/29/2019
SCALE	1" = 20'
REVISION	

240 DISTRICT
 1705 CHAMBERLAYNE AVENUE, CITY OF ROANOKE, VIRGINIA



BALZER & ASSOCIATES
 PLANNERS ARCHITECTS
 ENGINEERS SURVEYORS

Matthew N. Smith
 Virginia Registered Professional Engineer
 License No. 54205
 15811 City View Drive
 Suite 200
 Alexandria, VA 22304
 801.794.0211



C03
 PROJECT NO. 18100010