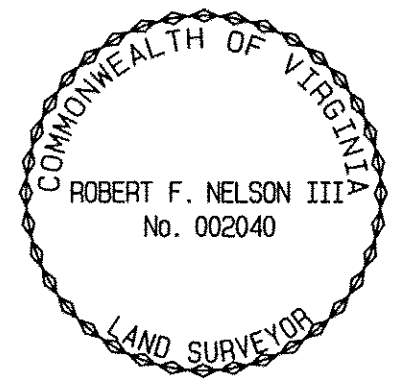
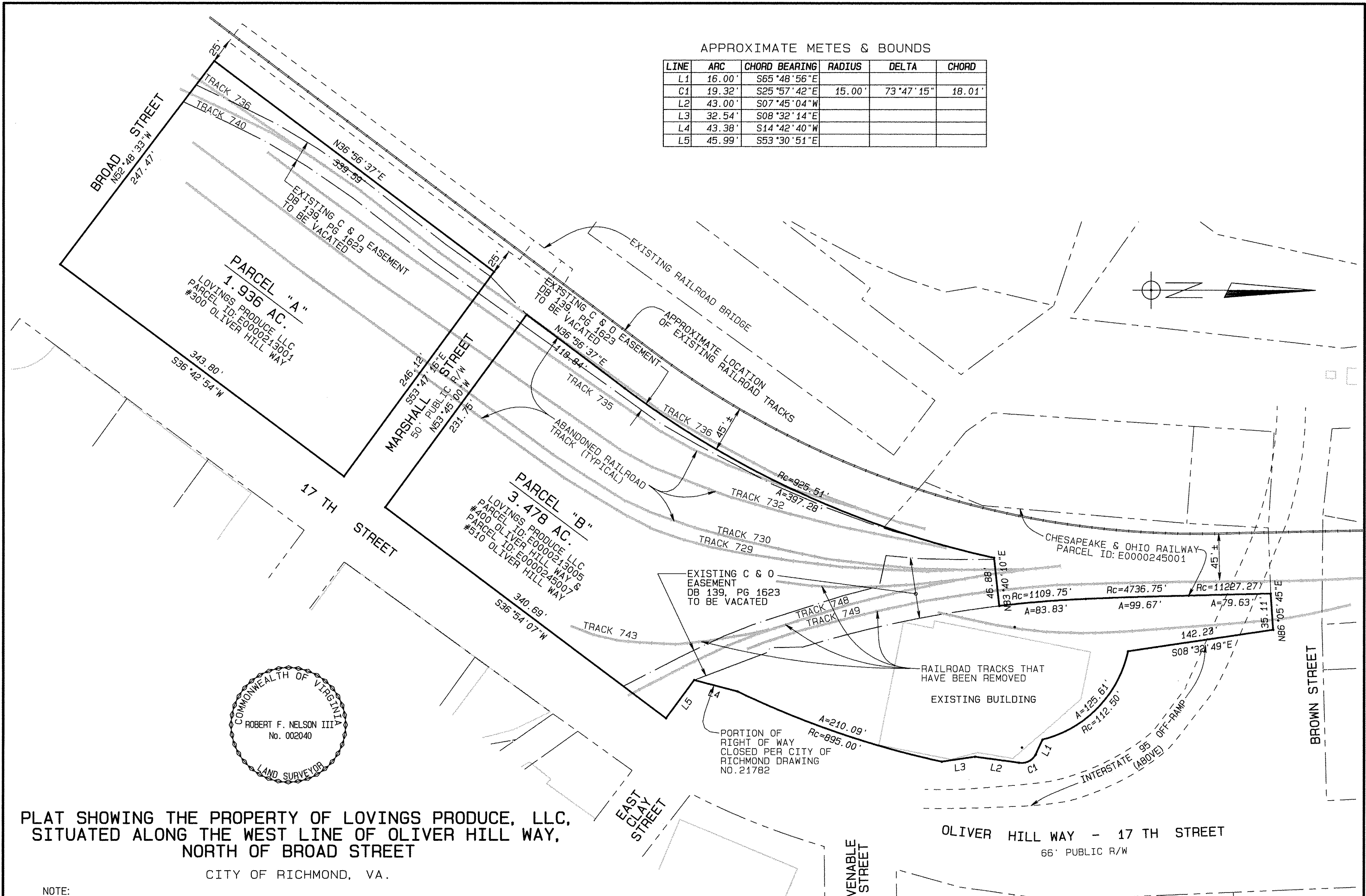


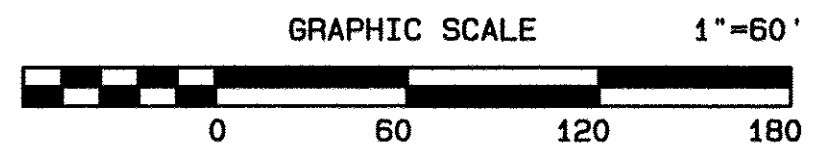
APPROXIMATE METES & BOUNDS

LINE	ARC	CHORD BEARING	RADIUS	DELTA	CHORD
L1	16.00'	S65°48'56"E			
C1	19.32'	S25°57'42"E	15.00'	73°47'15"	18.01'
L2	43.00'	S07°45'04"W			
L3	32.54'	S08°32'14"E			
L4	43.38'	S14°42'40"W			
L5	45.99'	S53°30'51"E			



PLAT SHOWING THE PROPERTY OF LOVINGS PRODUCE, LLC,
SITUATED ALONG THE WEST LINE OF OLIVER HILL WAY,
NORTH OF BROAD STREET
CITY OF RICHMOND, VA.

NOTE:
THIS MAP IS COMPILED FROM PREVIOUS SURVEY & DEEDS AND DOES NOT REPRESENT A CURRENT
BOUNDARY SURVEY.



I HEREBY CERTIFY THAT THIS SURVEY, TO THE BEST OF MY KNOWLEDGE AND BELIEF, IS CORRECT AND
COMPLIES WITH THE MINIMUM PROCEDURES AND STANDARDS ESTABLISHED BY THE VIRGINIA STATE
BOARD OF ARCHITECTS, PROFESSIONAL ENGINEERS, LAND SURVEYORS AND CERTIFIED LANDSCAPE
ARCHITECTS.

ENGINEERING DESIGN ASSOCIATES, INC.
CONSULTING ENGINEERS & SURVEYORS
P.O. BOX 50067 RICHMOND, VIRGINIA 23250 (804) 236-0190
DATE: MAY 14, 2015 SCALE: 1" = 60' JOB No: 14230