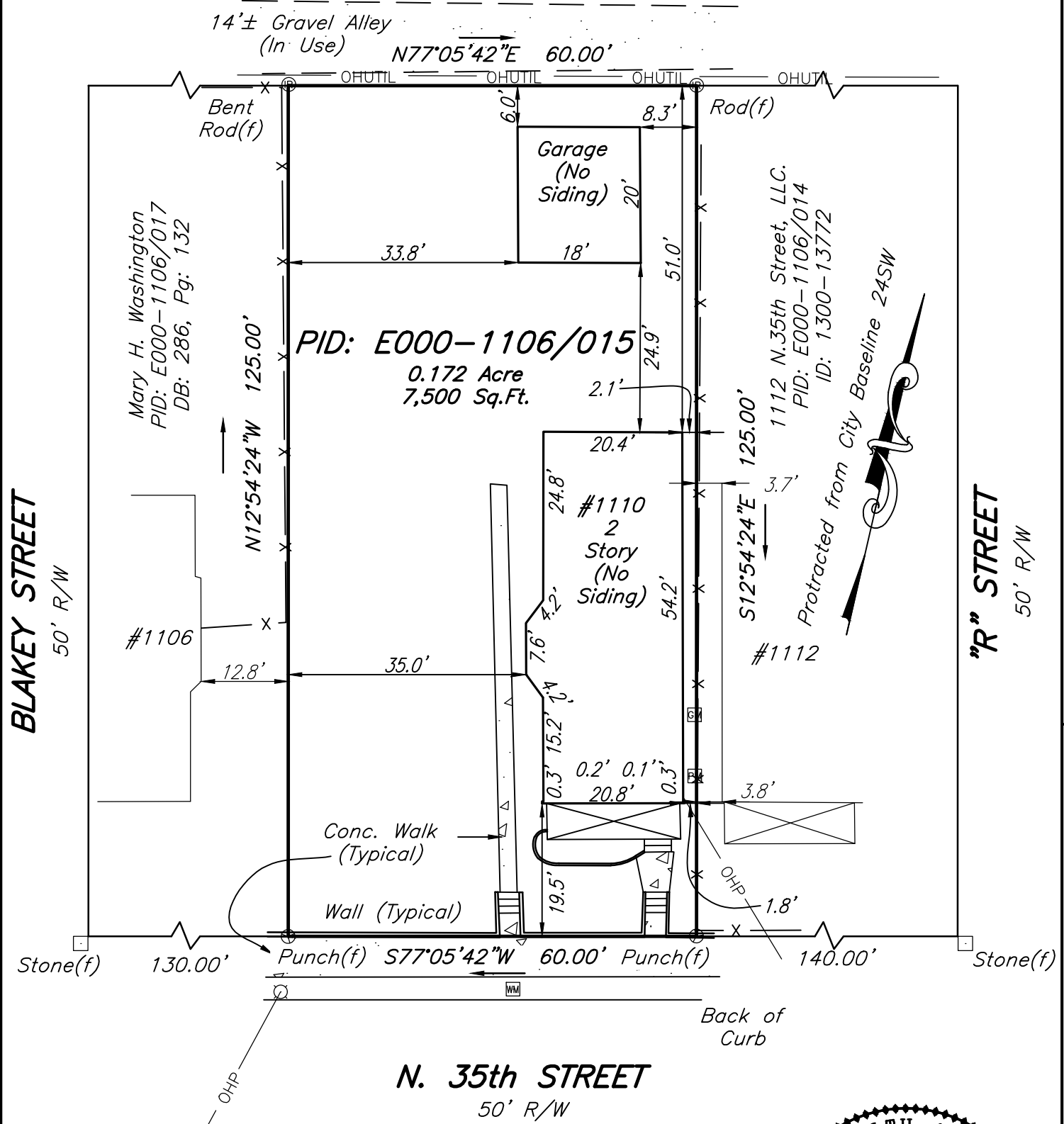


This is to certify that this plat or map was prepared under my direction from an actual field survey without the benefit of a title report. Unless otherwise noted, to the best of my knowledge and belief all visible evidence of improvements, easements and apparent encroachments are shown hereon. Not all easements may be shown.



LEGEND

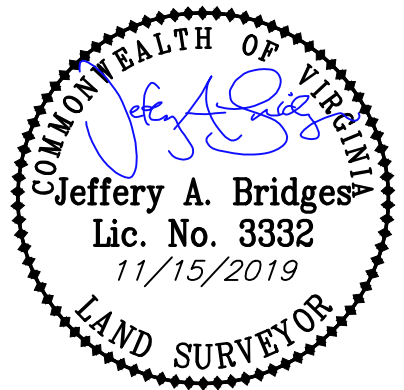
- Gas Meter
- Power Meter
- Water Meter
- Light Pole

Current Owner:
 EKS Realty Investments, LLC.
 PID: E000-1106/015
 ID: 1900-12551

IMPROVEMENTS ON
PID: E000-1106/015
#1110 NORTH 35TH STREET
 CITY OF RICHMOND, VIRGINIA

DATE: 11/15/2019
 SCALE: 1"=20'
 JOB NO.: 55190248.MS
 DRAWN BY: NWD
 CHECKED BY: JAB

PLANNERS / ARCHITECTS / ENGINEERS / SURVEYORS
 ROANOKE / RICHMOND / NEW RIVER VALLEY / STAUNTON / HARRISONBURG / LYNCHBURG
 15871 City View Drive, Suite 200 / Midlothian, Virginia 23113 / Phone (804) 794-0571 / www.balzer.cc



JNT190501551515M15155190248.MS DRAWING 155190248.MS.dwg