



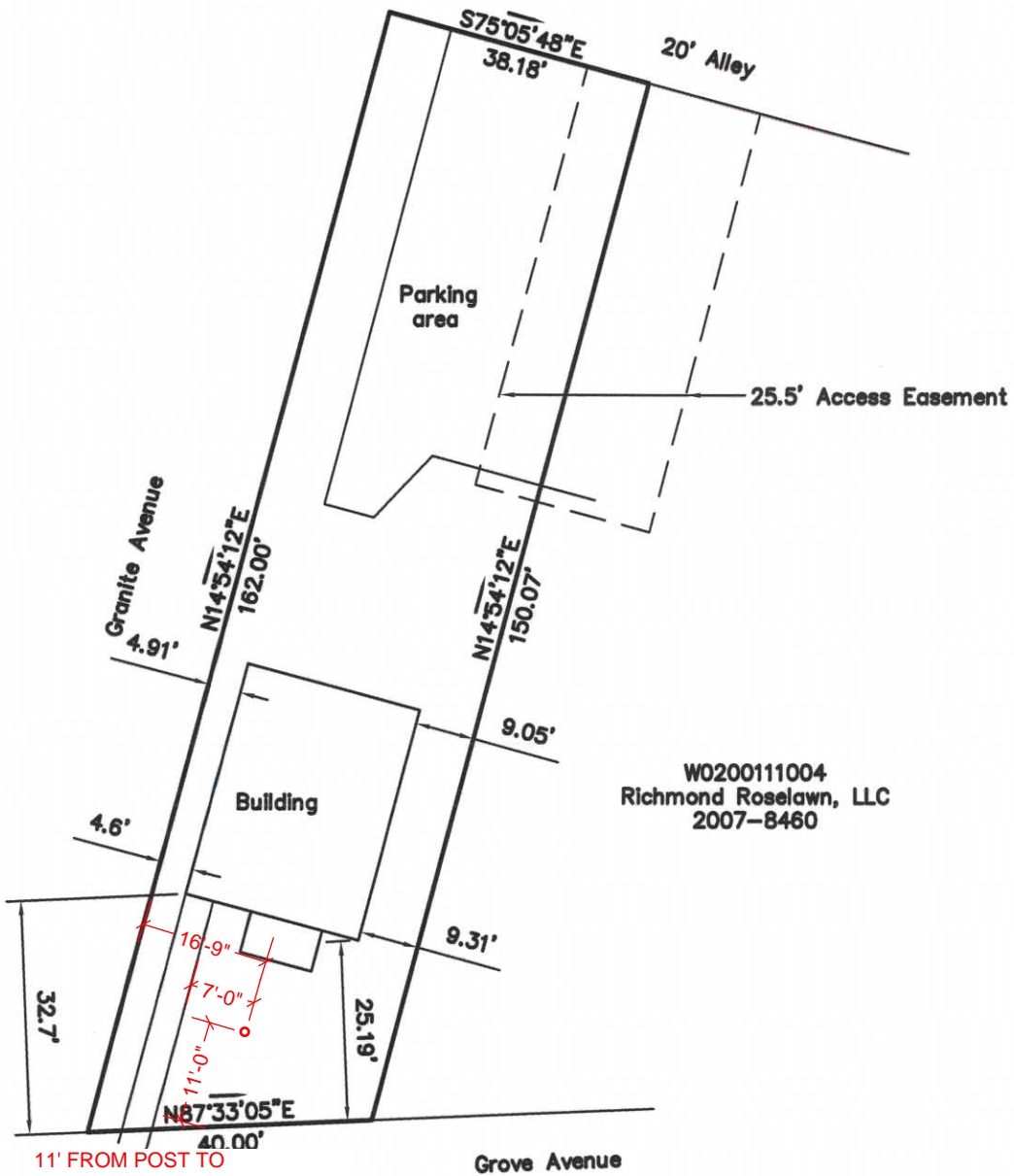
PILLAR
&
PEACOCK

— ◆ —
INTERIOR DESIGN
ARCHITECTURE

80"

37"

Exhibit A

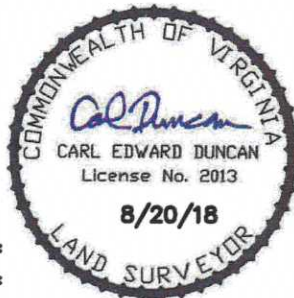


W0200111004
 Richmond Roselawn, LLC
 2007-8460

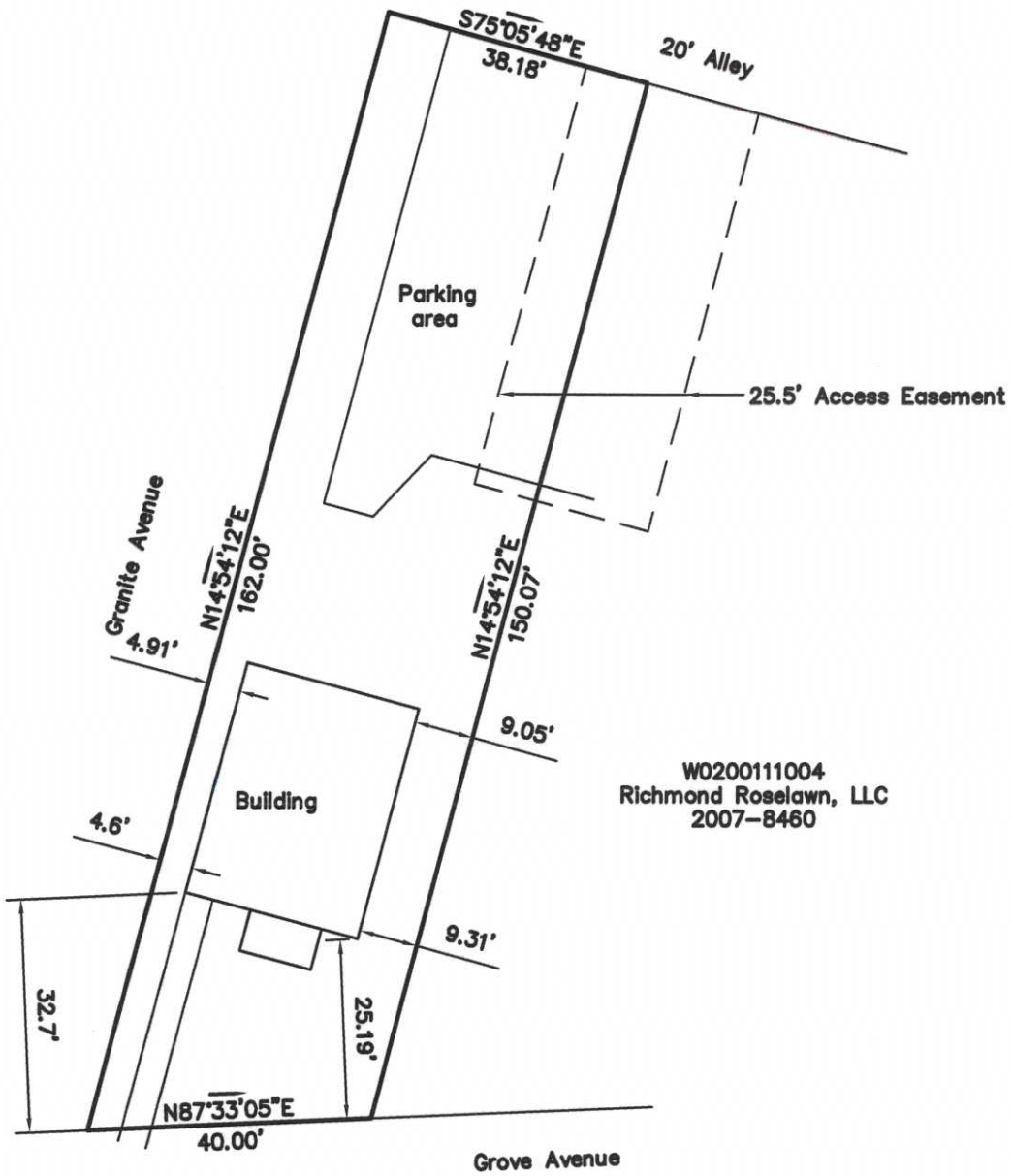
11' FROM POST TO
 FRONT CITY SIDEWALK
 7' FROM POST TO
 WALKWAY TO FRONT PORCH
 16-9' FROM POST TO
 SIDE CITY SIDEWALK

Plat Showing the
 Physical Improvements to
 W0200111003
 5612 Grove Avenue
 Elaine Oakley Revocable Trust

1st District
 City of Richmond



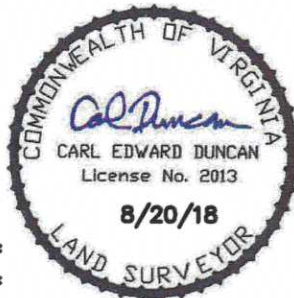
C. E. Duncan & Associates, Inc.	
2809 Rocky Oak Road	
POWHATAN, VIRGINIA 23139	
(804) 598-8240 Fax (804) 598-9240	
DATE: 8/20/18	SCALE: 1"=20'
DRAWN BY: CED JOB NO.: 18-1584	



W0200111004
 Richmond Roselawn, LLC
 2007-8460

Plat Showing the
 Physical Improvements to
 W0200111003
 5612 Grove Avenue
 Elaine Oakley Revocable Trust

1st District
 City of Richmond



C. E. Duncan & Associates, Inc.	
2809 Rocky Oak Road	
POWHATAN, VIRGINIA 23139	
(804) 598-8240 Fax (804) 598-9240	
DATE: 8/20/18	SCALE: 1"=20'
DRAWN BY: CED JOB NO.: 18-1584	