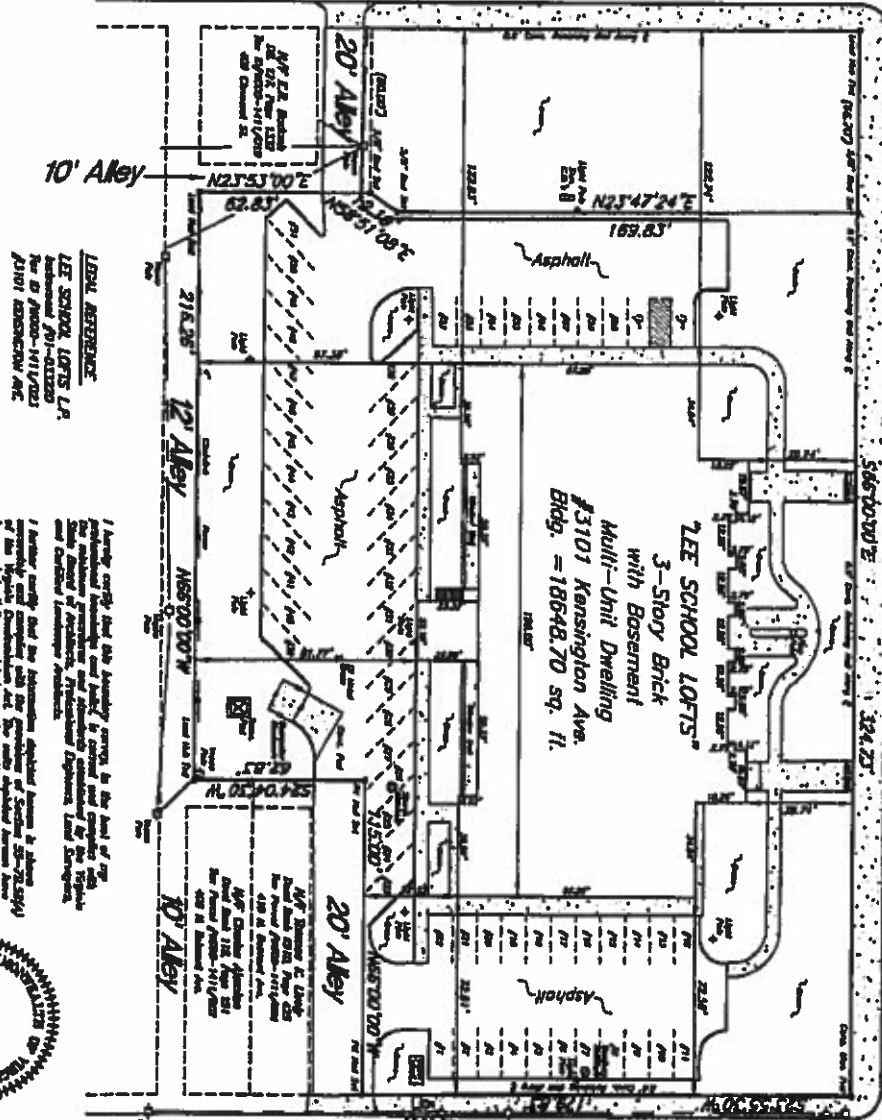


Cleveland Avenue (50' R/W)

Kensington Avenue (66' R/W)

North Belmont Avenue (50' R/W)



LOCAL REFERENC:
LEE SCHOOL LOFTS, L.P.
 Instrumental #01-01320
 For 60 Acres-11/1/03
 #1101 KENSINGTON AVE

I hereby certify that the boundary corners to the land of the project have been established and found to conform to the plat of the same as shown on the attached plat of the project. I am a duly licensed Professional Surveyor and am duly qualified to perform the duties of a Surveyor. I am duly qualified to perform the duties of a Surveyor. I am duly qualified to perform the duties of a Surveyor.



- Legend**
- 1. The Project
 - 2. The Project
 - 3. The Project
 - 4. The Project
 - 5. The Project
 - 6. The Project
 - 7. The Project
 - 8. The Project
 - 9. The Project
 - 10. The Project
 - 11. The Project
 - 12. The Project
 - 13. The Project
 - 14. The Project
 - 15. The Project
 - 16. The Project
 - 17. The Project
 - 18. The Project
 - 19. The Project
 - 20. The Project
 - 21. The Project
 - 22. The Project
 - 23. The Project
 - 24. The Project
 - 25. The Project
 - 26. The Project
 - 27. The Project
 - 28. The Project
 - 29. The Project
 - 30. The Project
 - 31. The Project
 - 32. The Project
 - 33. The Project
 - 34. The Project
 - 35. The Project
 - 36. The Project
 - 37. The Project
 - 38. The Project
 - 39. The Project
 - 40. The Project
 - 41. The Project
 - 42. The Project
 - 43. The Project
 - 44. The Project
 - 45. The Project
 - 46. The Project
 - 47. The Project
 - 48. The Project
 - 49. The Project
 - 50. The Project
 - 51. The Project
 - 52. The Project
 - 53. The Project
 - 54. The Project
 - 55. The Project
 - 56. The Project
 - 57. The Project
 - 58. The Project
 - 59. The Project
 - 60. The Project
 - 61. The Project
 - 62. The Project
 - 63. The Project
 - 64. The Project
 - 65. The Project
 - 66. The Project
 - 67. The Project
 - 68. The Project
 - 69. The Project
 - 70. The Project
 - 71. The Project
 - 72. The Project
 - 73. The Project
 - 74. The Project
 - 75. The Project
 - 76. The Project
 - 77. The Project
 - 78. The Project
 - 79. The Project
 - 80. The Project
 - 81. The Project
 - 82. The Project
 - 83. The Project
 - 84. The Project
 - 85. The Project
 - 86. The Project
 - 87. The Project
 - 88. The Project
 - 89. The Project
 - 90. The Project

- Notes:**
1. The project property appears and to be located within the limits of the 100 Year Flood Plain boundary as defined by the Federal Emergency Management Agency-Phase 2 (FEMA-2) elevation table: 44y 24 1988 (Zone 2).
 2. The survey plat represents a correct and accurate field based survey of all physical points hereon.
 3. The survey was made within the limits of a 10th Order, 4th Edition, National System of Reference 1983 Geodetic Control Network.
 4. Any error and obtained on a unit or method contained herein is a constant distance.

CONDOMINIUM SURVEY OF
LEE SCHOOL LOFTS
 SITUATED AT #3101 KENSINGTON AVENUE
 CITY OF RICHMOND, VIRGINIA
 DATED FEBRUARY 1, 2003

Scale: 1" = 30'

Shadrach & Neal, Inc.
LAND SURVEYING
 10000 W. BROADWAY, SUITE 100
 RICHMOND, VIRGINIA 23224
 TEL: 804-781-1100
 FAX: 804-781-1101
 WWW.SHADRACH-NEAL.COM