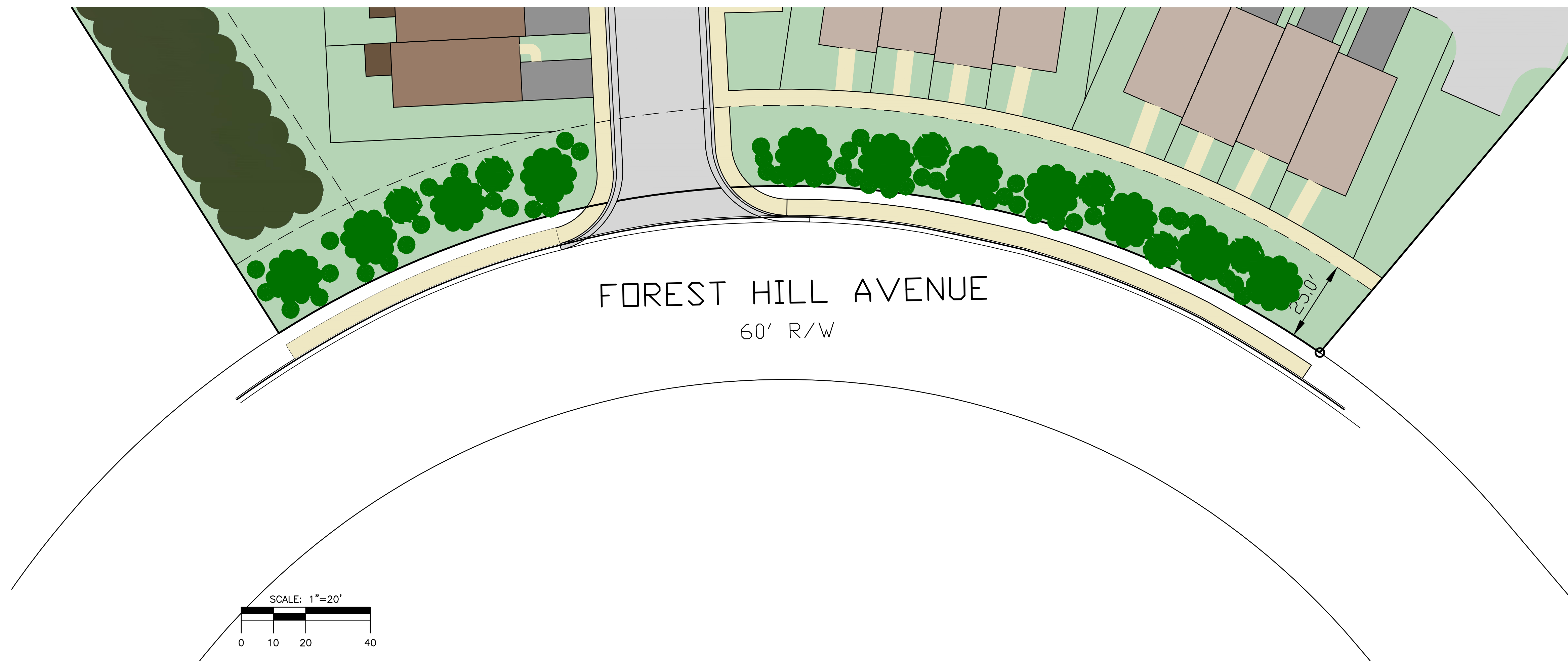





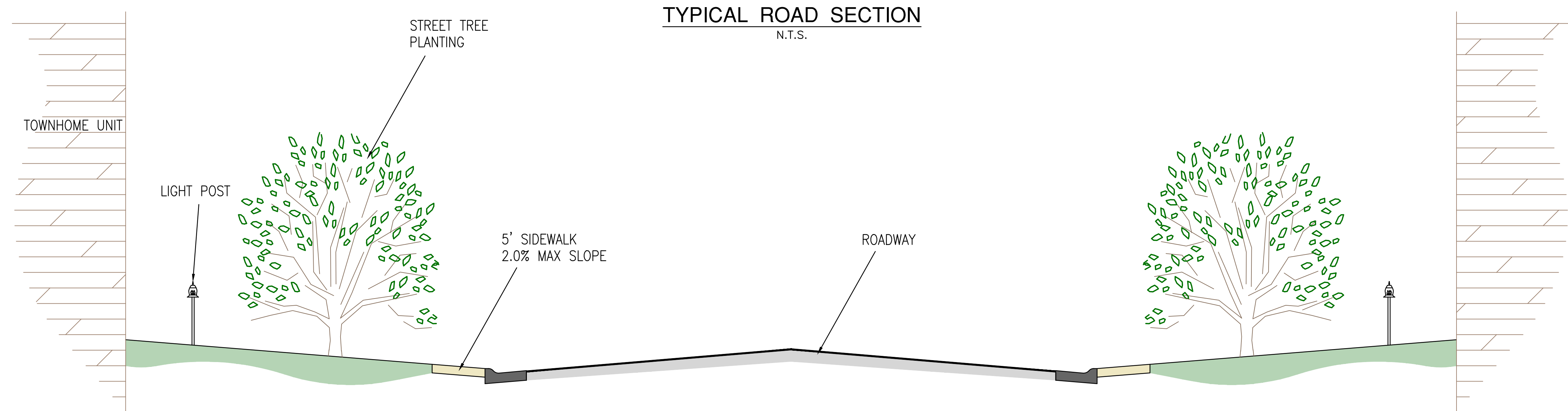
FOREST HILL AVENUE - 25' LANDSCAPE BUFFER



LANDSCAPING LEGEND

-  LARGE DECIDUOUS OR EVERGREEN TREE WITH AN ULTIMATE HEIGHT OF 50' OR GREATER
-  SMALL DECIDUOUS OR EVERGREEN TREE WITH AN ULTIMATE HEIGHT OF 20' OR GREATER
-  SHRUBS

TYPICAL ROAD SECTION
N.T.S.



YOUNGBLOOD, TYLER & ASSOCIATES P.C.
CONSULTING ENGINEERS, PLANNERS & SURVEYORS
7309 HANOVER GREEN DRIVE P.O. BOX 517 MECHANICSVILLE, VIRGINIA 23111
PHONE: (804) 746-5285 FAX: (804) 730-7624 EMAIL: YOUNGBLOOD-TYLER@YOUNGBLOOD-TYLER.COM

STONY POINT LANDING
SOUTHWEST DISTRICT RICHMOND CITY, VIRGINIA

LANDSCAPE BUFFER PLAN

DATE: 3/7/2018

DATE	BY	REVISIONS
7/7/18	STAFF COMMENTS	
10/16/18	PLANNING COMMENTS	

DESIGNED BY: DCW
DRAWN BY: DCW
CHECKED BY: ANW

J. N.: 451-01-001
CAD FILE: FOREST HILL AVE LAYOUT

