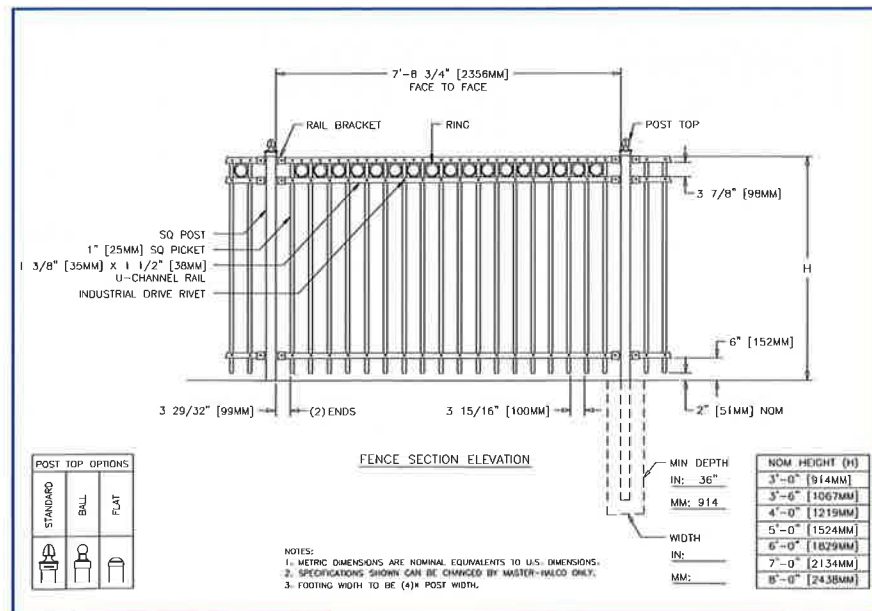


# IMPERIAL STYLE

The design of our Imperial style is based on traditional iron picket fences dating back to 1892. Long accepted as an outstanding value because of their quality construction, durability, numerous options and affordable pricing, Imperial fences and gates by Monumental Iron Works provides an exceptional ornamental picket fence system where elegant simplicity is desired. With pickets spaced 3-15/16 inches apart, Monumental Iron Works offers a high degree of security while



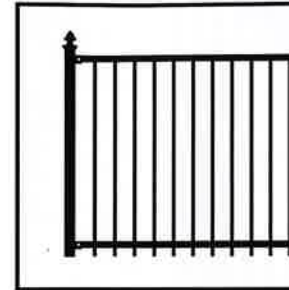
preserving the practicality and charm of a traditional picket fence. Imperial style is an ideal choice where a combination of strength and classic appearance is desired.



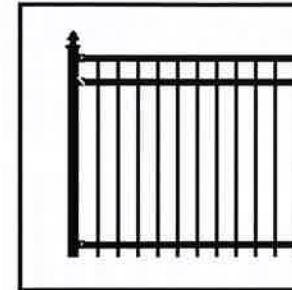
Typical Fence Section Elevation

# AVAILABLE CONFIGURATIONS

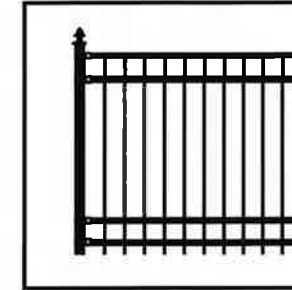
Imperial A



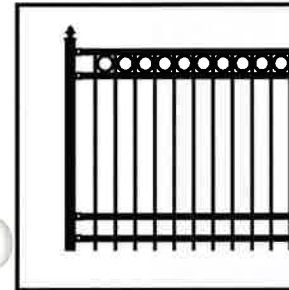
Imperial B



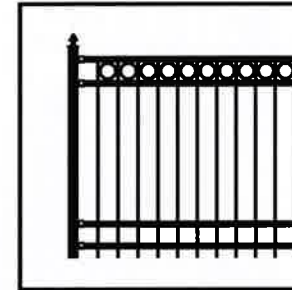
Imperial C



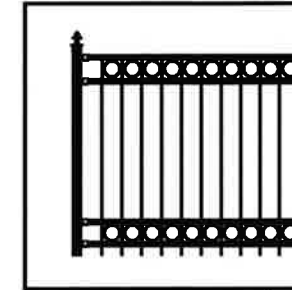
Imperial D Modified



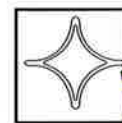
Imperial D



Imperial E



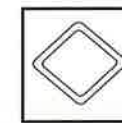
## ACCESSORY OPTIONS



4" Star



4" Circle



4" Diamond



## AVAILABLE WITH:

- TUBULAR PICKETS**  
 3/4"sq. - 18ga. pickets  
 1"sq. - 18ga. pickets  
 1"sq. - 16ga. pickets  
 1"sq. - 14ga. pickets  
 or  
**SOLID STEEL PICKETS**  
 3/4"sq.

- RAILS**  
 1-1/2" x 1-3/8" U-Channels  
 6' or 8' long sections with  
 11ga. rails



All parts are galvanized and powder-coated



## FOR MORE:

- Information
- Drawings
- Specifications

Call 410-633-6500

OR 800-229-5615