

Richmond Department of Public Utilities

STORMWATER SERVICE REQUESTS

by Richmond Voter District

January 1, 2016 - March 1, 2017

Richmond West End

1st Voter District

Richmond, Virginia U.S.A.

Information as provided by the
Richmond Department of Information Technology
GIS Team/Richmond Department of Public Utilities
Division of Stormwater

Legend

• SR Closed - 76

● SR Total - 97

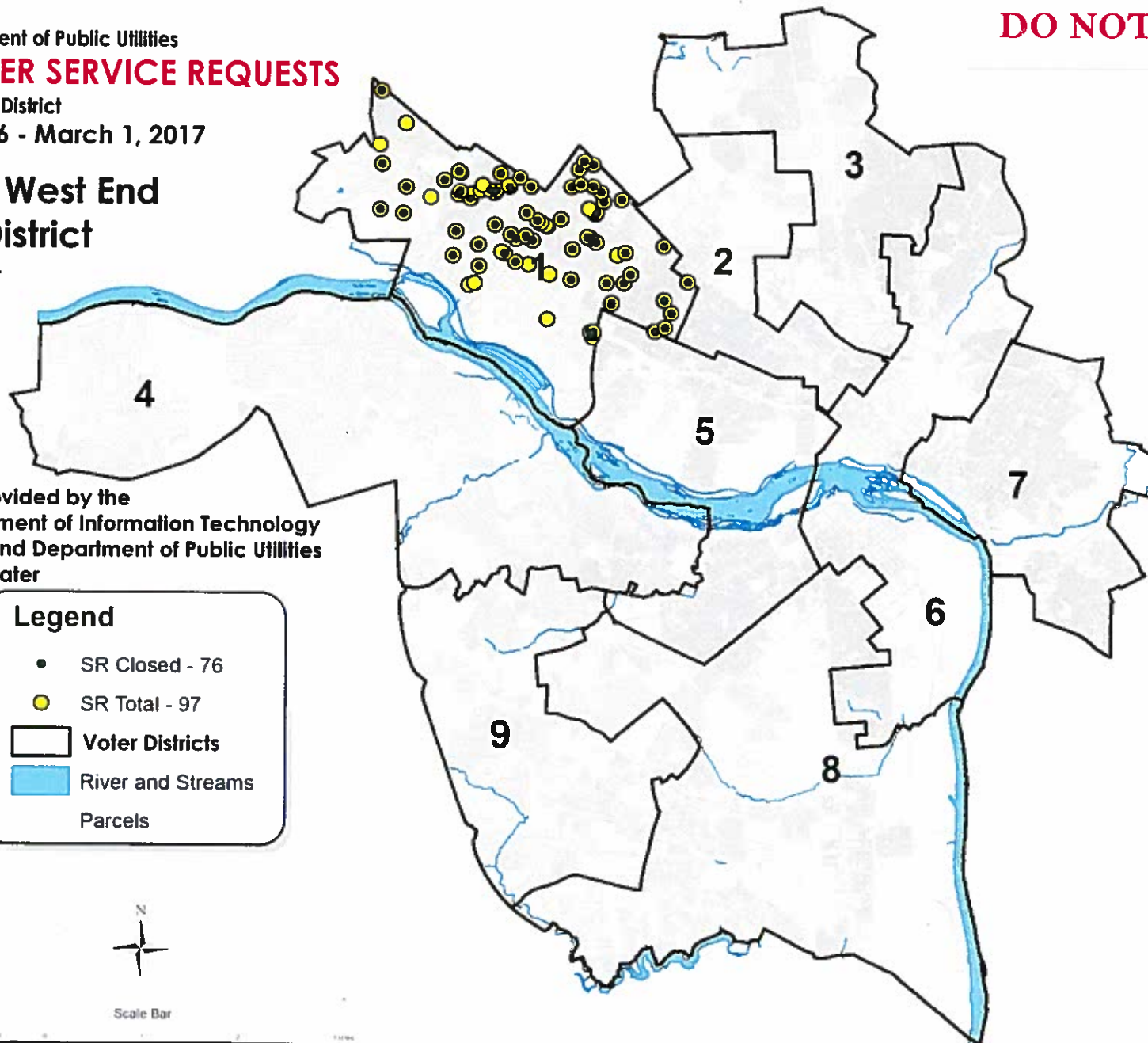
▭ Voter Districts

▭ River and Streams

▭ Parcels



Scale Bar



Richmond Department of Public Utilities

STORMWATER SERVICE REQUESTS

by Richmond Voter District

January 1, 2016 - March 1, 2017

Richmond North Central 2nd Voter District

Richmond, Virginia U.S.A.

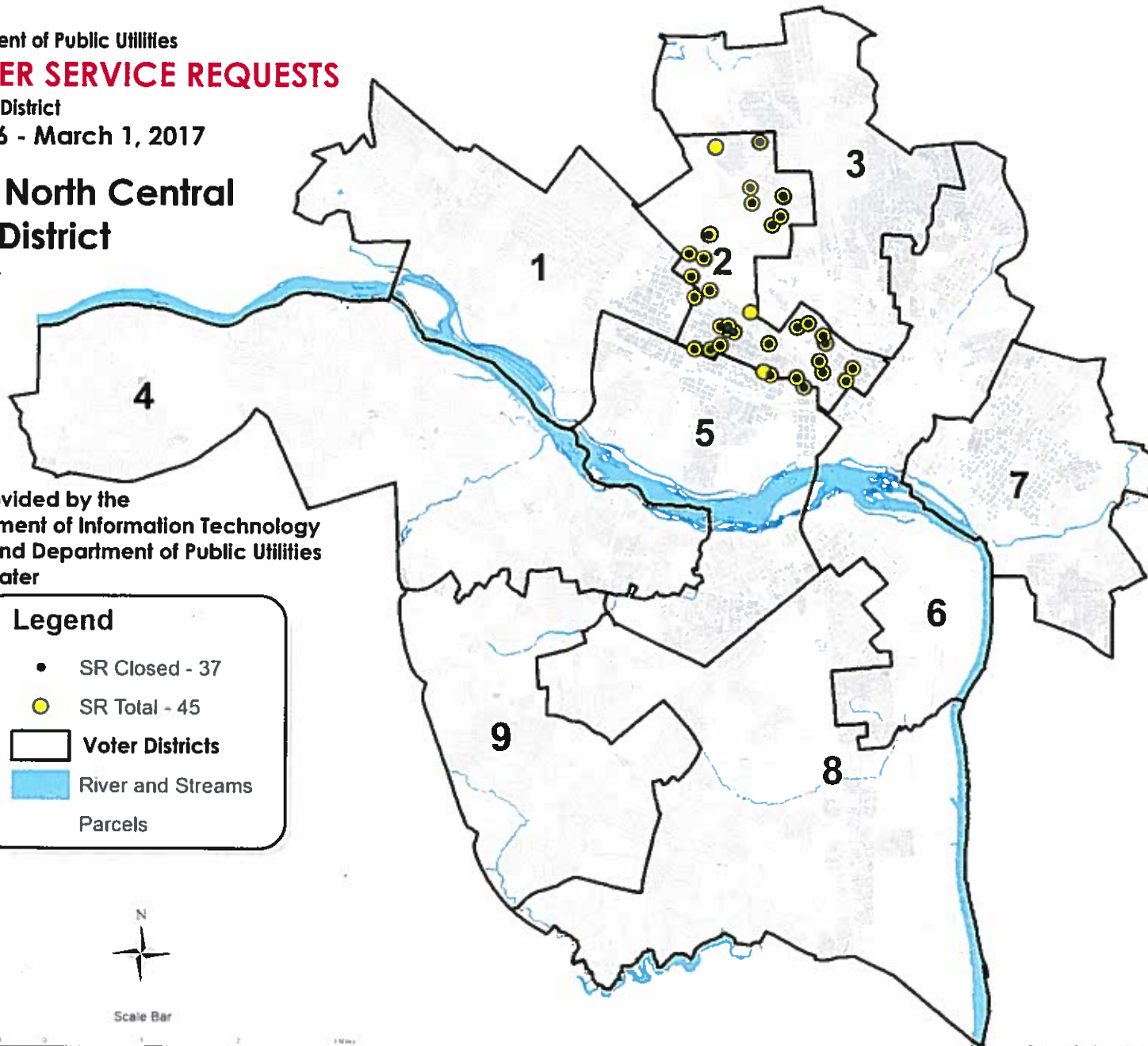
Information as provided by the
Richmond Department of Information Technology
GIS Team/Richmond Department of Public Utilities
Division of Stormwater

Legend

- SR Closed - 37
- SR Total - 45
- ▭ Voter Districts
- ▭ River and Streams
- ▭ Parcels



Scale Bar



Richmond Department of Public Utilities

STORMWATER SERVICE REQUESTS

by Richmond Voter District

January 1, 2016 - March 1, 2017

Richmond Northside

3rd Voter District

Richmond, Virginia U.S.A.

Information as provided by the
Richmond Department of Information Technology
GIS Team/Richmond Department of Public Utilities
Division of Stormwater

Legend

• SR Closed - 41

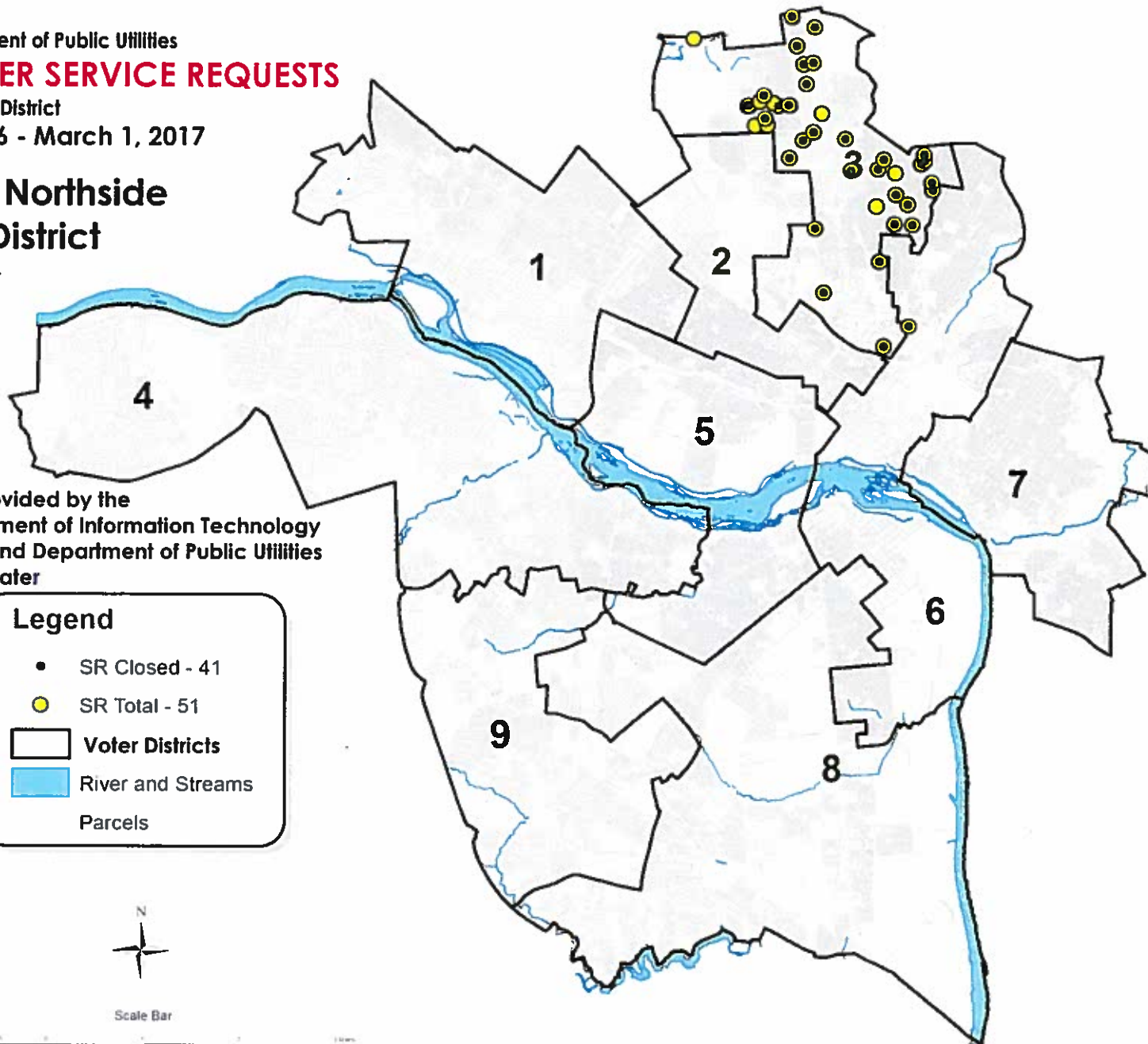
● SR Total - 51

▭ Voter Districts

▭ River and Streams
▭ Parcels



Scale Bar



Richmond Department of Public Utilities

STORMWATER SERVICE REQUESTS

by Richmond Voter District

January 1, 2016 - March 1, 2017

Richmond Southwest 4th Voter District

Richmond, Virginia U.S.A.

Information as provided by the
Richmond Department of Information Technology
GIS Team/Richmond Department of Public Utilities
Division of Stormwater

Legend

• SR Closed - 45

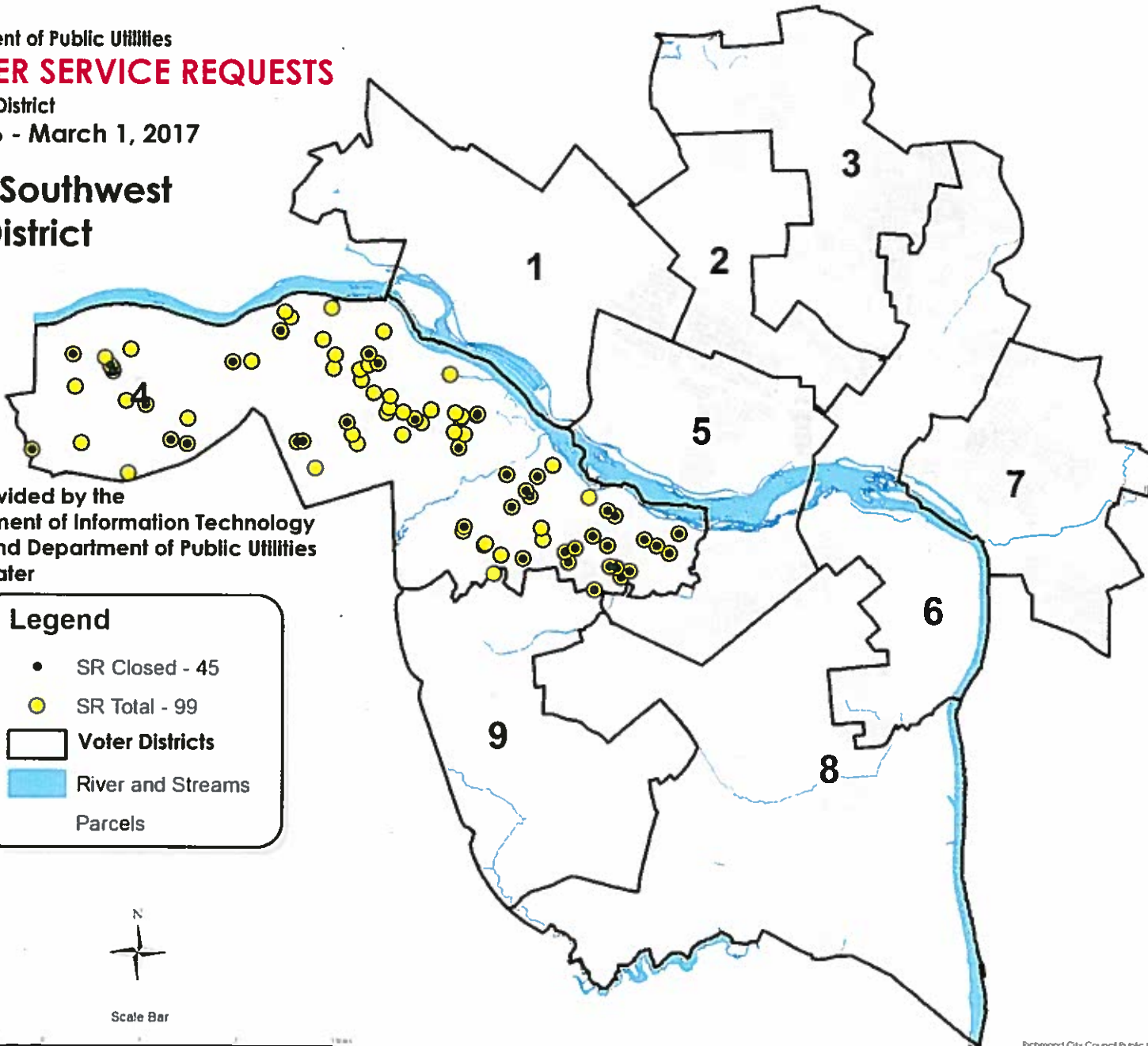
● SR Total - 99

□ Voter Districts

■ River and Streams
Parcels



Scale Bar



Richmond Department of Public Utilities

STORMWATER SERVICE REQUESTS

by Richmond Voter District

January 1, 2016 - March 1, 2017

Richmond Central 5th Voter District

Richmond, Virginia U.S.A.

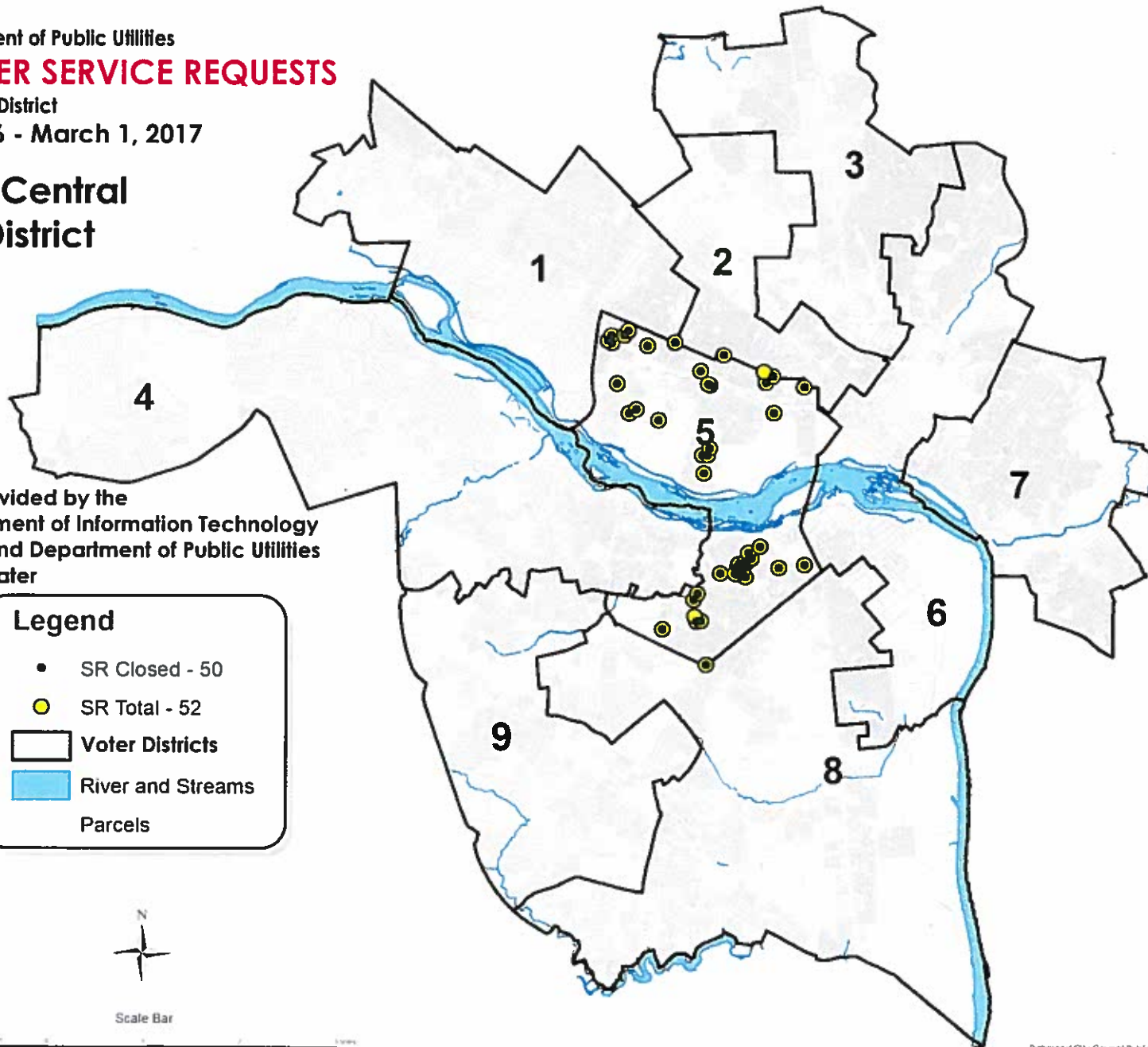
Information as provided by the
Richmond Department of Information Technology
GIS Team/Richmond Department of Public Utilities
Division of Stormwater

Legend

- SR Closed - 50
- SR Total - 52
- ▭ Voter Districts
- ▭ River and Streams
- ▭ Parcels



Scale Bar



Richmond Department of Public Utilities

STORMWATER SERVICE REQUESTS

by Richmond Voter District

January 1, 2016 - March 1, 2017

Richmond Gateway

6th Voter District

Richmond, Virginia U.S.A.

Information as provided by the
Richmond Department of Information Technology GIS
Team/Richmond Department of Public Utilities Division of
Stormwater

Legend

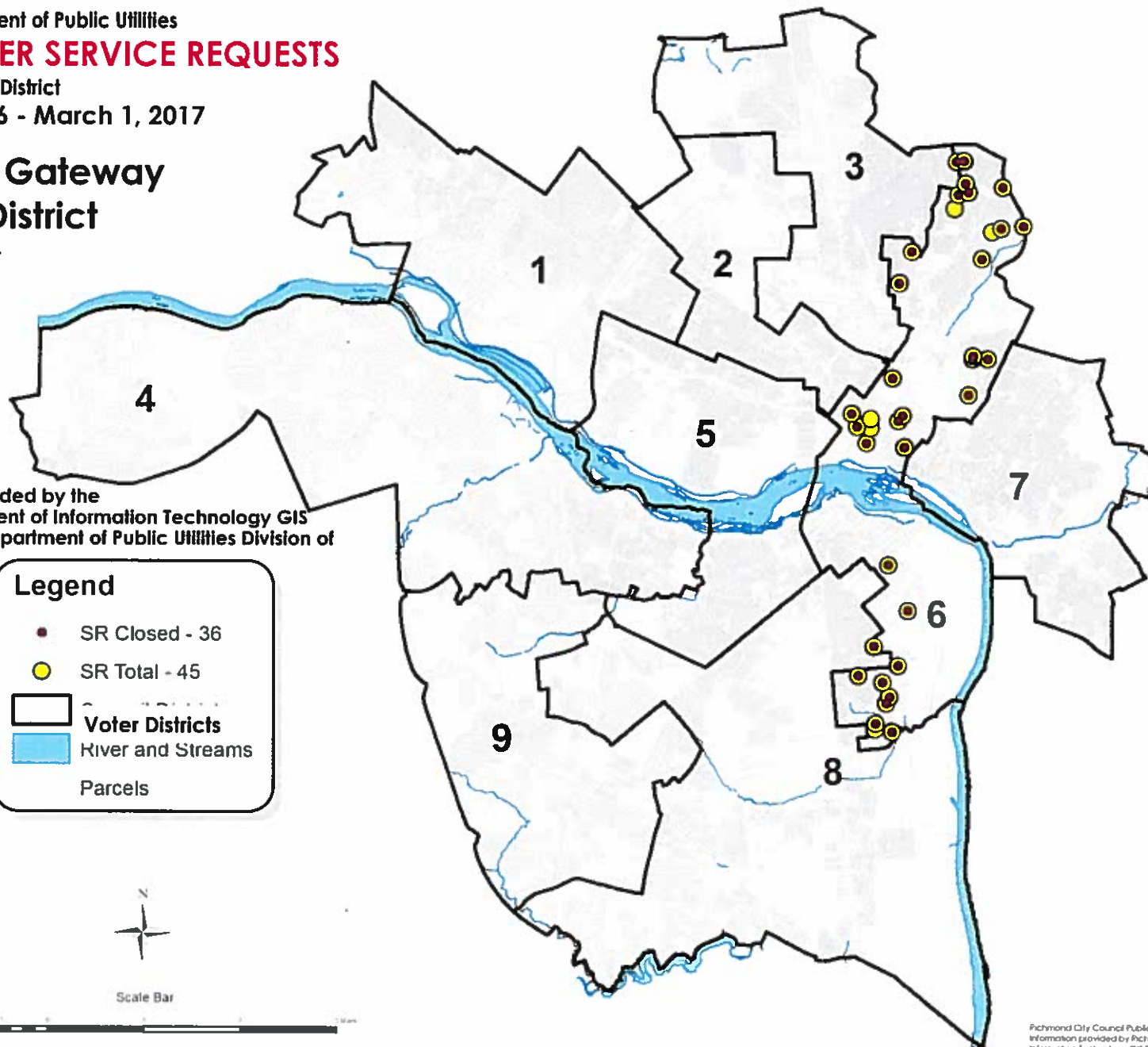
SR Closed - 36

SR Total - 45

Voter Districts
River and Streams
Parcels



Scale Bar



Richmond Department of Public Utilities

STORMWATER SERVICE REQUESTS

by Richmond Voter District

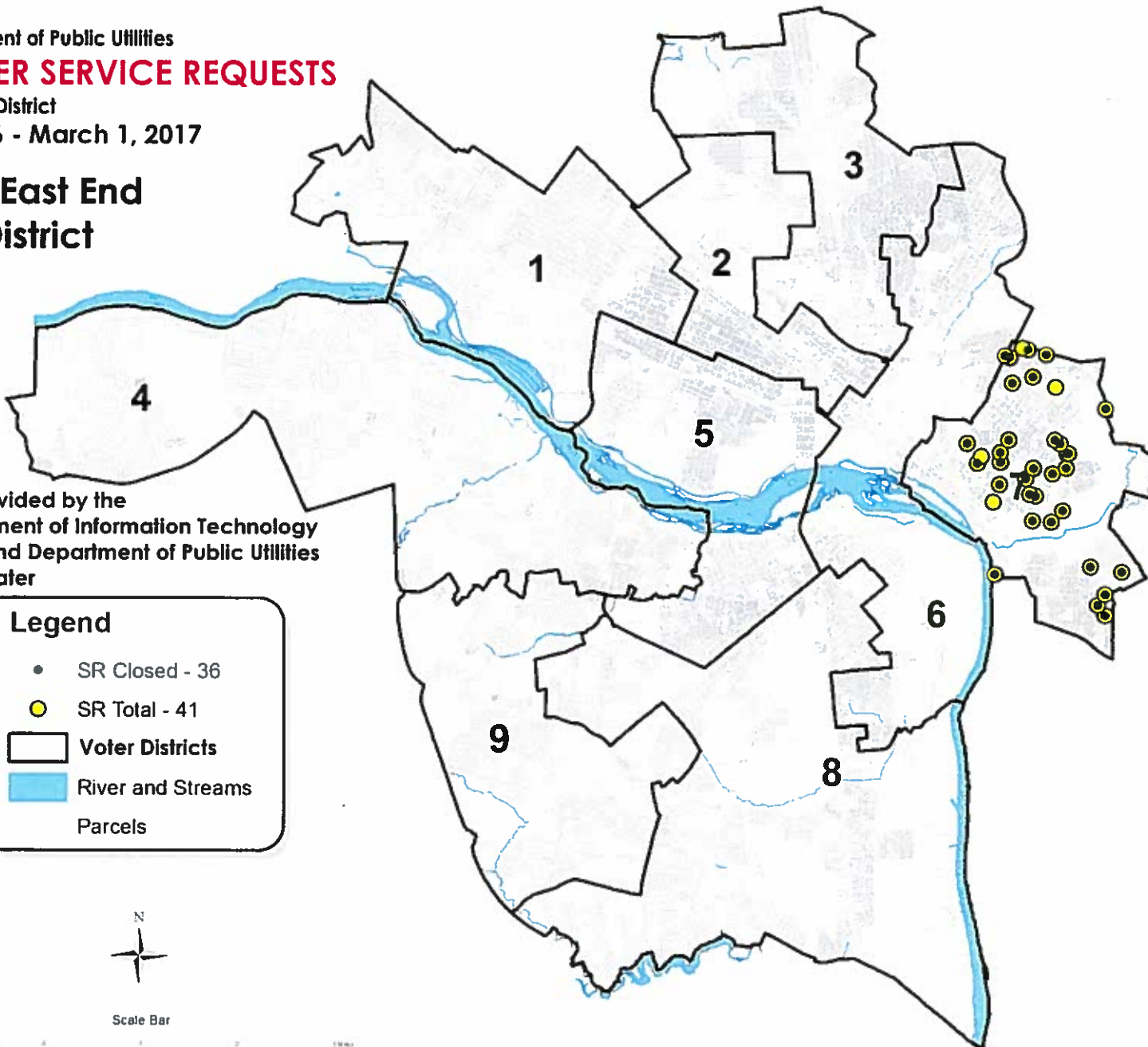
January 1, 2016 - March 1, 2017

Richmond East End

7th Voter District

Richmond, Virginia U.S.A.

Information as provided by the
Richmond Department of Information Technology
GIS Team/Richmond Department of Public Utilities
Division of Stormwater



Richmond Department of Public Utilities

STORMWATER SERVICE REQUESTS

by Richmond Voter District

January 1, 2016 - March 1, 2017

Richmond Southside

8th Voter District

Richmond, Virginia U.S.A.

Information as provided by the
Richmond Department of Information Technology
GIS Team/Richmond Department of Public Utilities
Division of Stormwater

Legend

• SR Closed - 43

● SR Total - 79

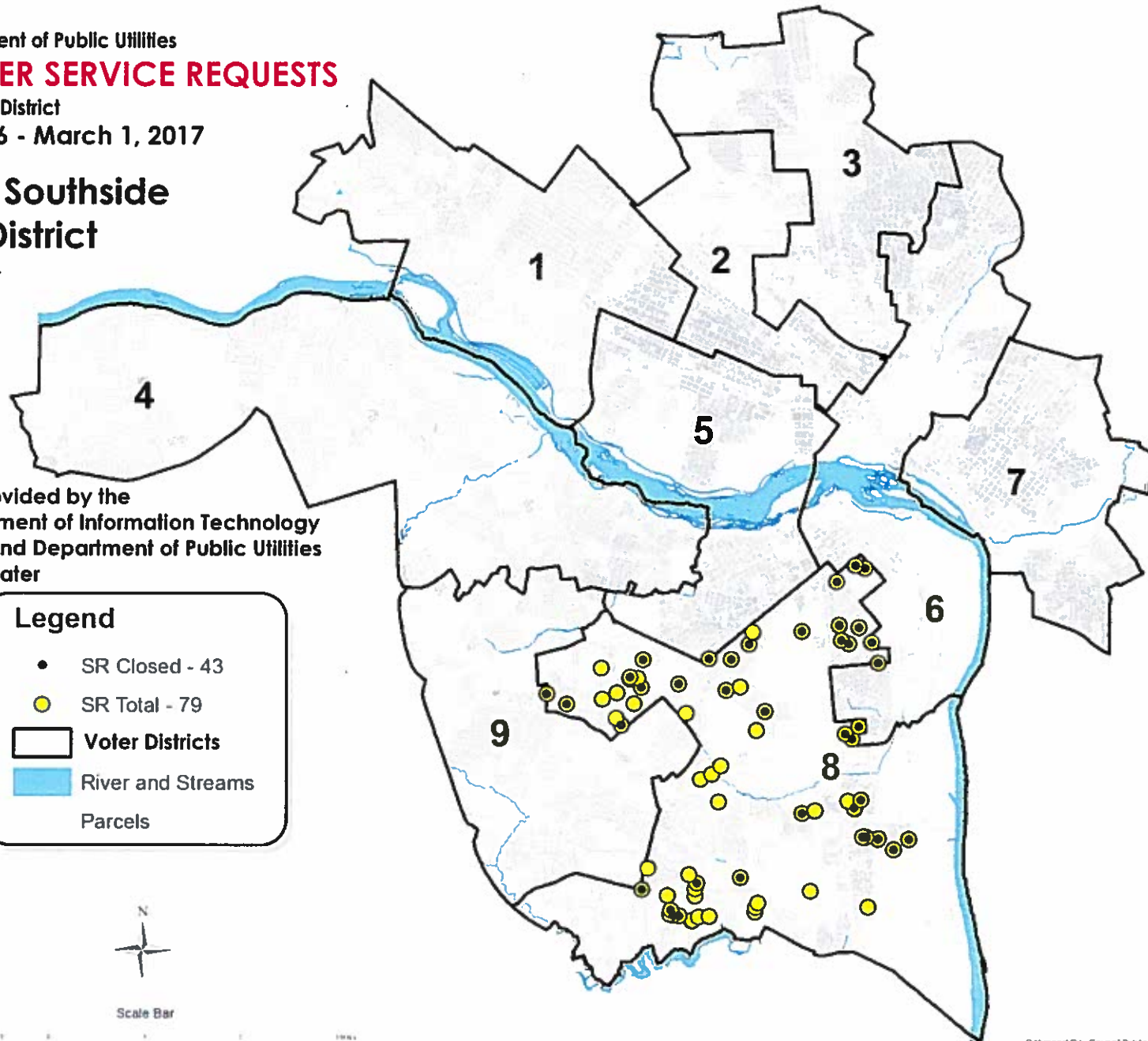
▭ Voter Districts

▬ River and Streams

▬ Parcels



Scale Bar



Richmond Department of Public Utilities

STORMWATER SERVICE REQUESTS

by Richmond Voter District

January 1, 2016 - March 1, 2017

Richmond South Central 9th Voter District

Richmond, Virginia U.S.A.

Information as provided by the
Richmond Department of Information Technology
GIS Team/Richmond Department of Public Utilities
Division of Stormwater

Legend

- SR Closed - 28
- SR Total - 78
- ▭ Voter Districts
- ▬ River and Streams
- ▬ Parcels



Scale Bar

