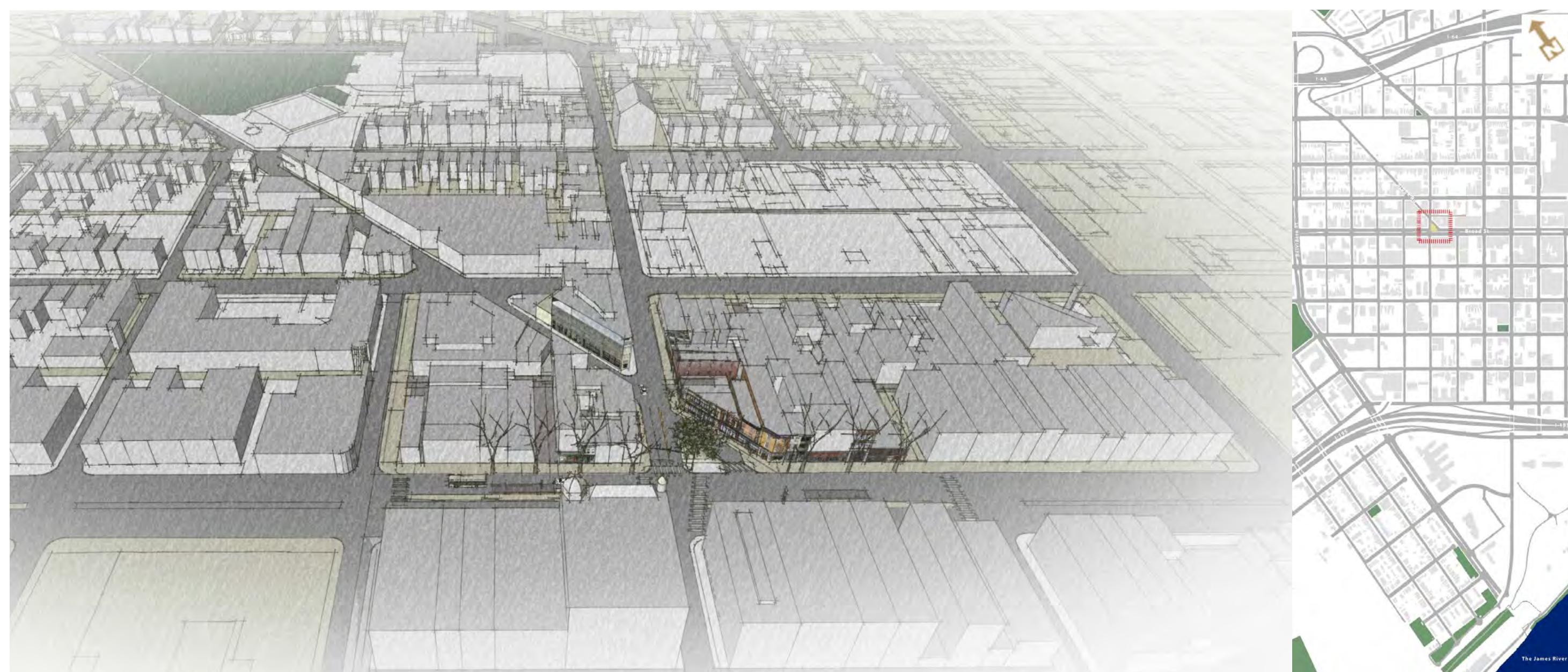
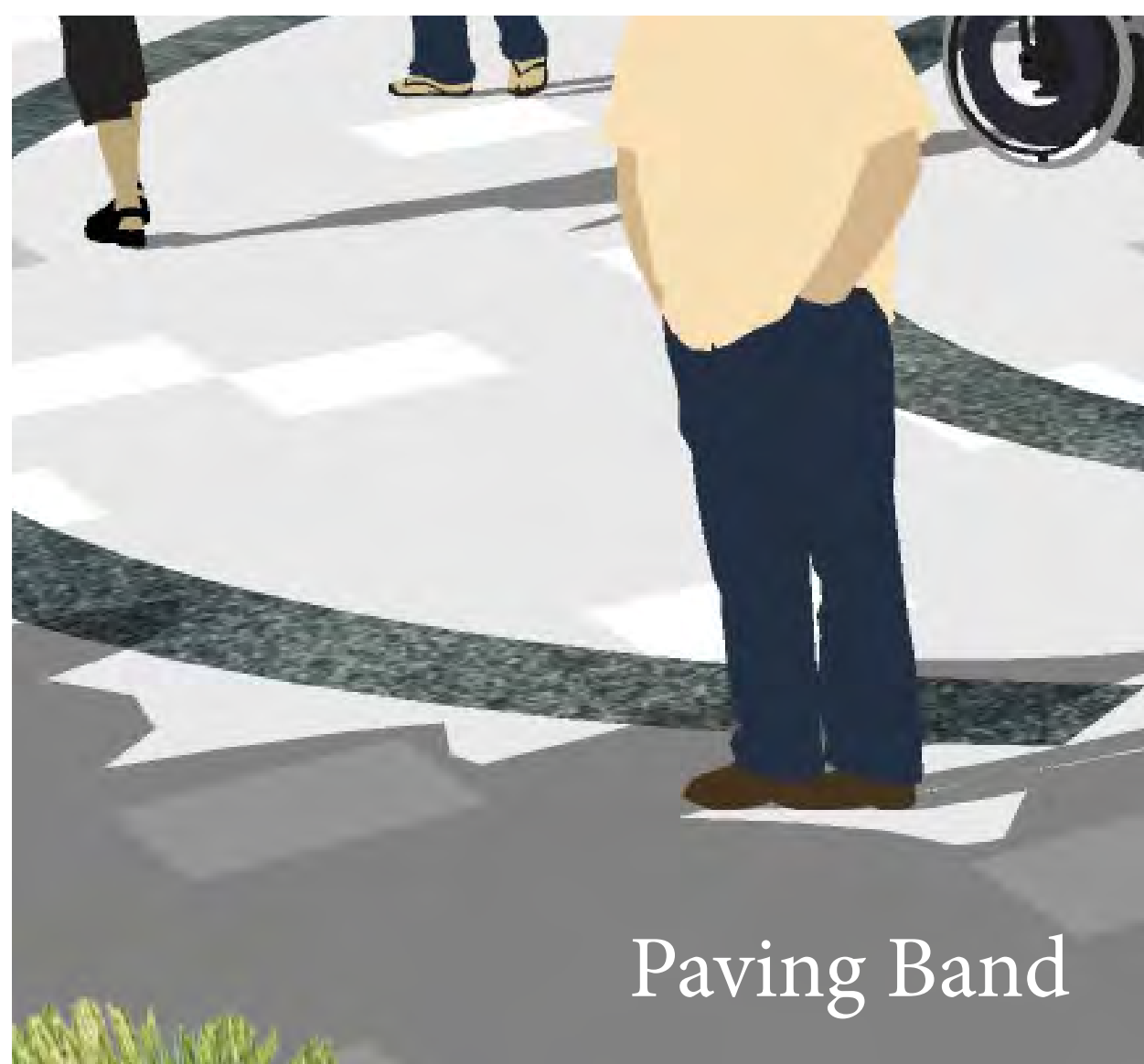
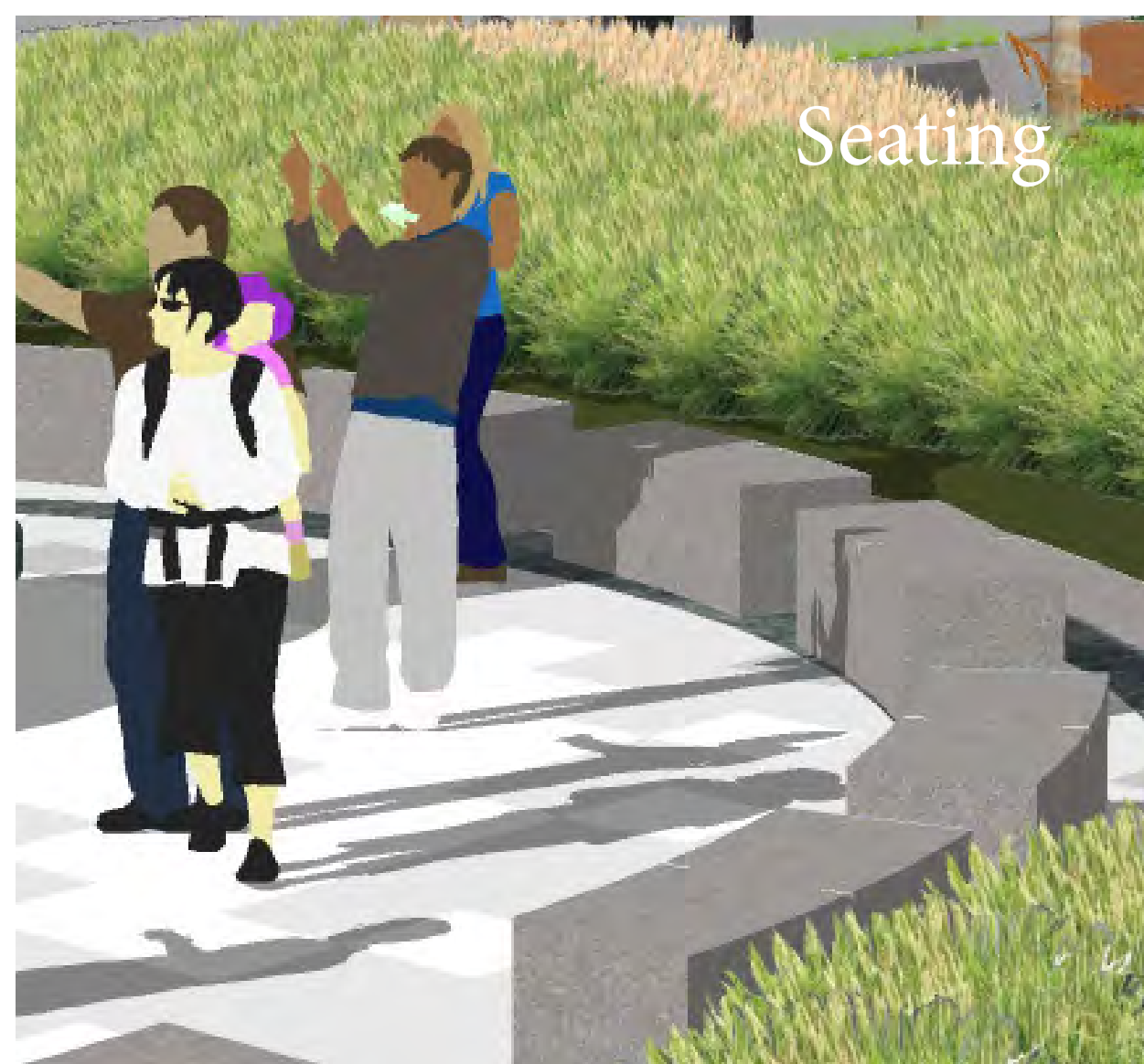
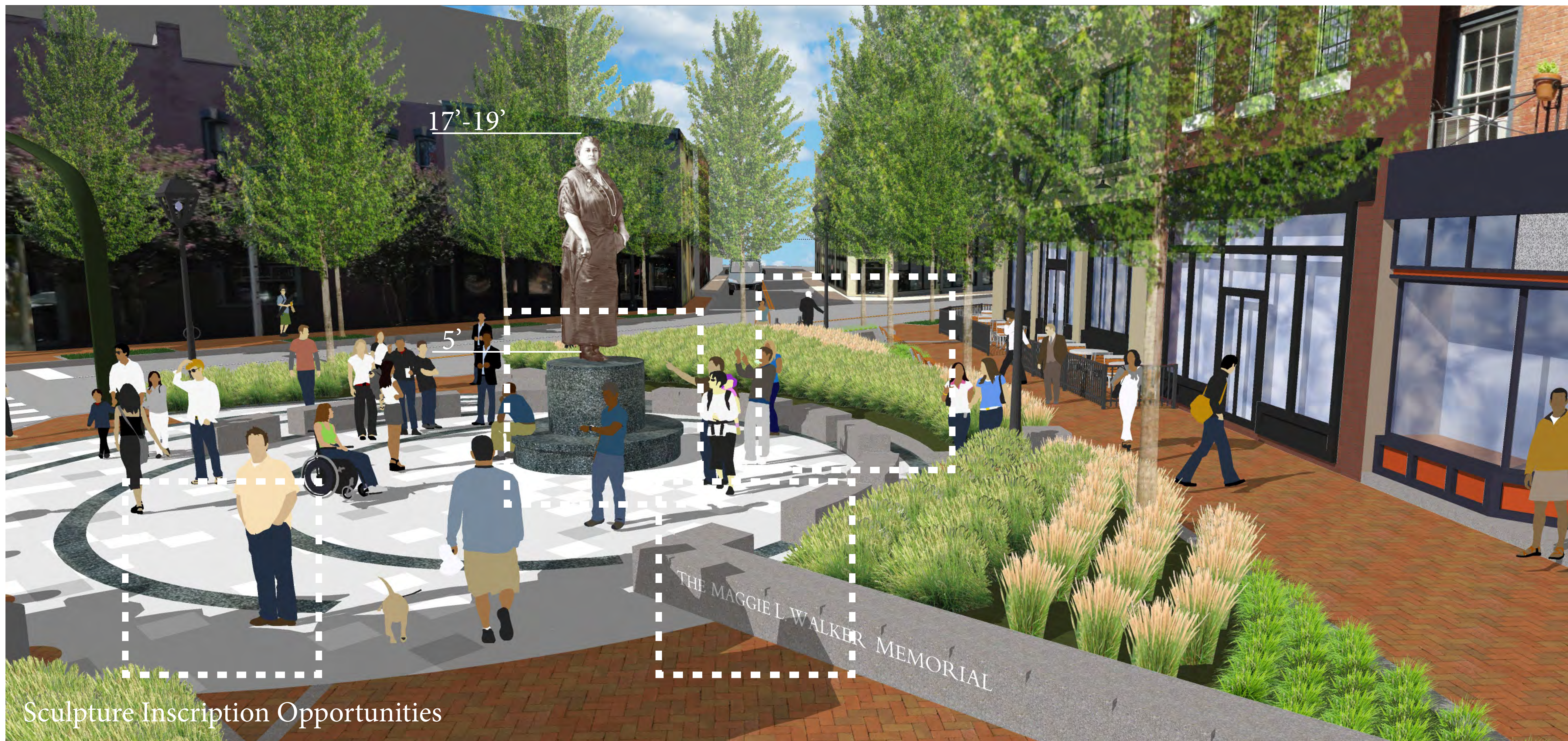


1. MAGGIE L. WALKER SCULPTURE
2. DEDICATION WALL
3. SCULPTURE PLAZA
4. PLAZA SEATING
5. CAFE AND PUBLIC SEATING
6. PLANTINGS
7. HISTORIC BROOK ROAD
8. SHORT TERM PARKING/ LOADING









THIS IMAGE SHOWS THE AGE AND DRESS THAT THE SCULPTURE WILL DEPICT. THE ONLY DIFFERENCES WILL BE THAT SHE WILL HAVE A SLIGHT SMILE AND SHE WILL HOLD IN HER HAND A BANK LEDGER.



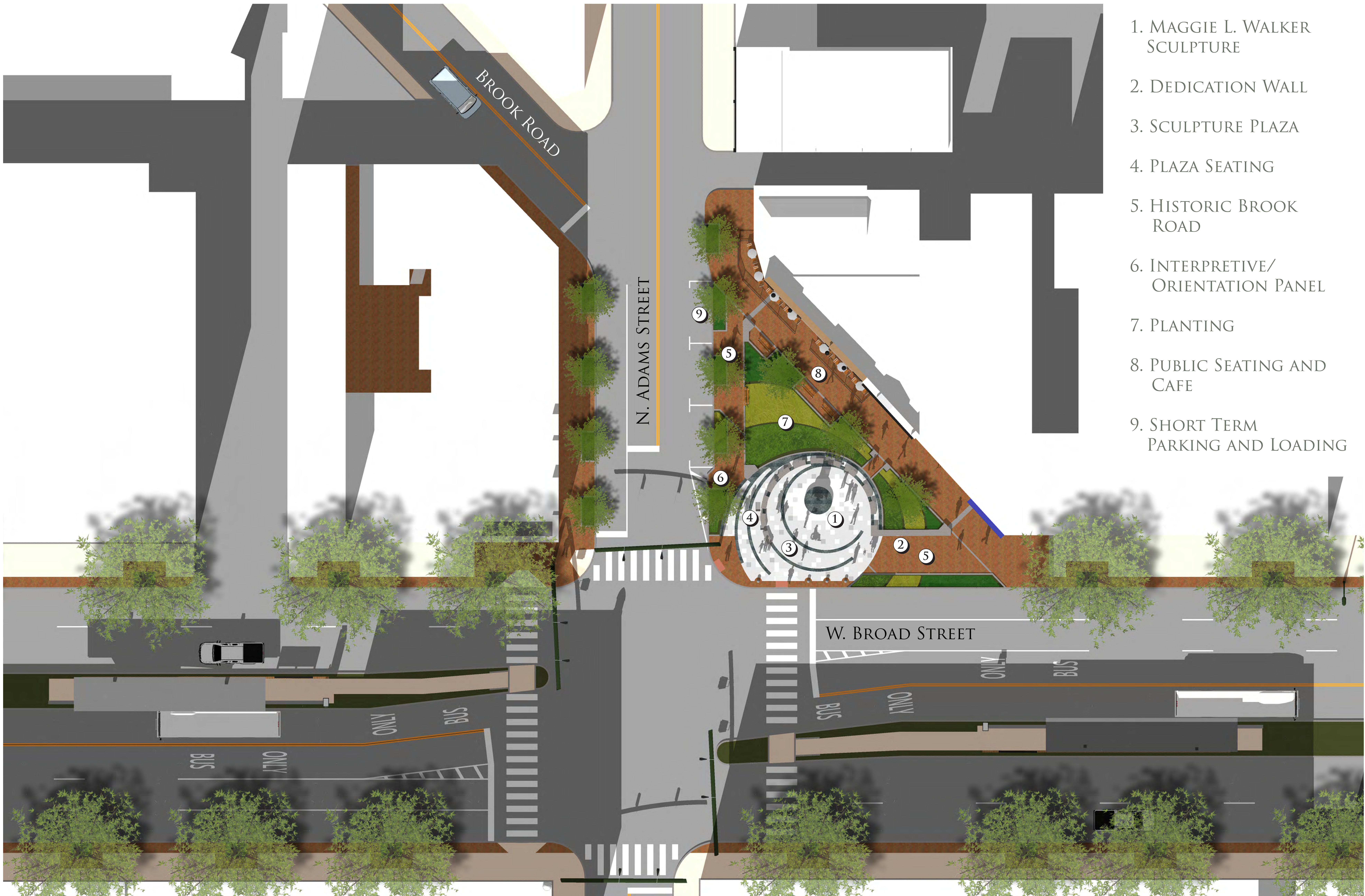
VIEW FROM BROAD STREET



THE MONUMENT WILL INCLUDE INSCRIPTIONS ON THE PEDESTAL, THE PAVING AND UPON THE BENCHES. THE HEIGHT OF THE BRONZE FIGURE WILL BE BETWEEN TWELVE AND FOURTEEN FEET. THE PEDESTAL HEIGHT WILL BE FIVE FEET.



THE CONCENTRIC BANDS IN THE PAVING WILL INCLUDE NARRATIVE CARVED INSCRIPTIONS



1. MAGGIE L. WALKER
SCULPTURE
2. DEDICATION WALL
3. SCULPTURE PLAZA
4. PLAZA SEATING
5. HISTORIC BROOK
ROAD
6. INTERPRETIVE/
ORIENTATION PANEL
7. PLANTING
8. PUBLIC SEATING AND
CAFE
9. SHORT TERM
PARKING AND LOADING