

Bryan Park

4308 Hermitage Road

Bryan Park



Site Name: SC Bryan Park
Small Network Node
4308 Hermitage Road
Richmond, VA 23227

Photograph Information:
Private Access Road
View from the Northeast
Showing the Existing Site

NB+CTM
TOTALLY COMMITTED.

Bryan Park



Site Name: SC Bryan Park
Small Network Node
4308 Hermitage Road
Richmond, VA 23227

Photograph Information:
Private Access Road
View from the Northeast
Showing the Proposed Site

NBICTM
TOTALLY COMMITTED.

Bryan Park

12



SITE PLAN

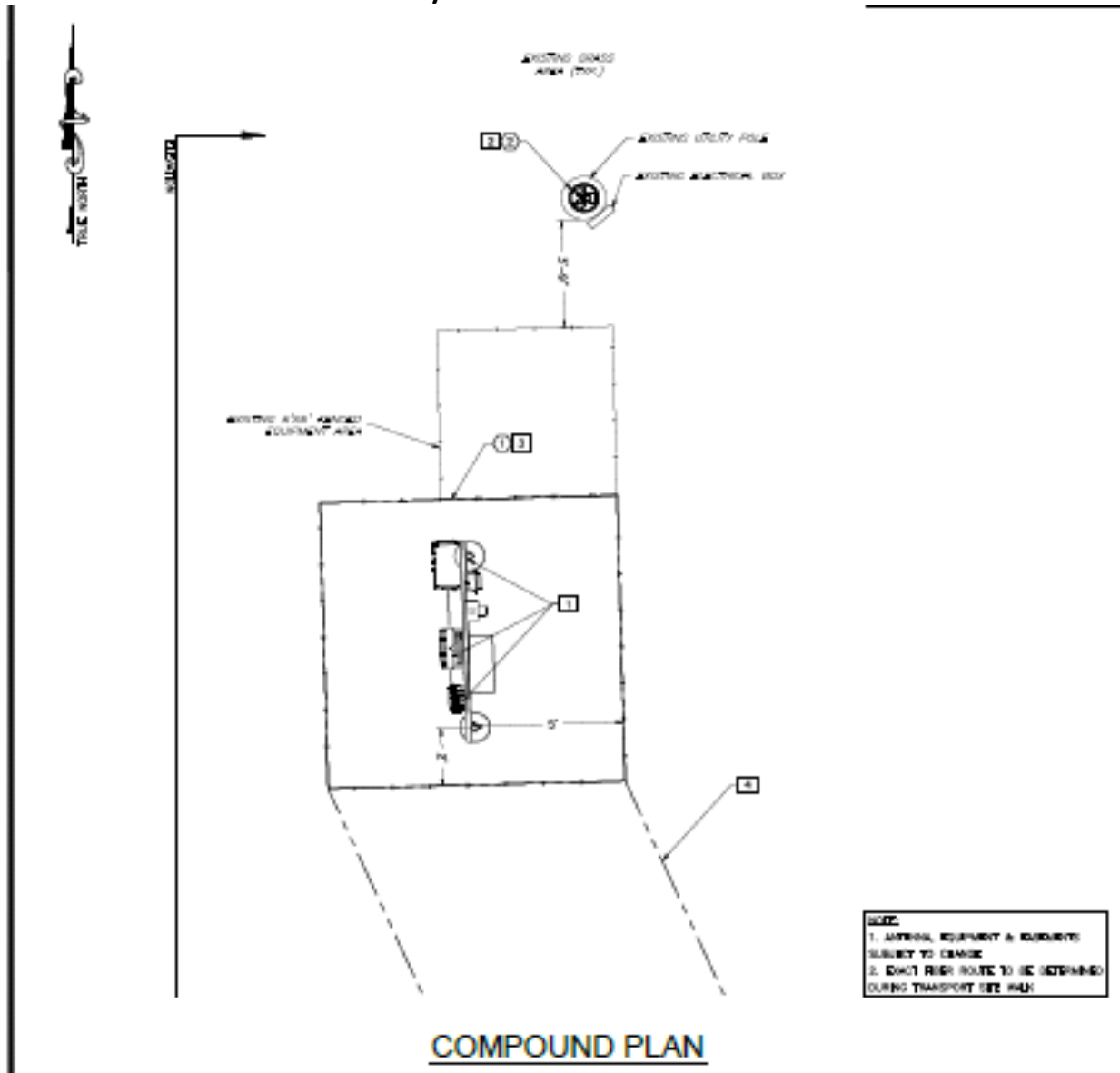
CONDUIT

APPROXIMATE FIELD RUN LENGTH = 750'
APPROXIMATE ELECTRICAL RUN LENGTH = 374'

LEASE NOTES

- ① NEW 20'x30' 10'x10' HORIZONTAL EQUIPMENT CABINETS MOUNTED ON 4" H-PINNS
- ② NEW 20'x30' ANTENNA TO BE MOUNTED ON TOP OF EXISTING UTILITY POLE
- ③ NEW 20'x30' ACCESS/UTILITY CABINET

Bryan Park



COMPOUND PLAN

CONSTRUCTION NOTES

- 1 NEW 10'x14' EQUIPMENT MOUNTED ON NEW 6" I-BEAM
- 2 NEW 10'x14' ANTENNA TO BE MOUNTED ON TOP OF EXISTING UTILITY POLE
- 3 NEW 10'x14' CHAIN LINK FENCE AROUND LEASE AREA TO MATCH EXISTING FENCE
- 4 NEW 10'x14' ACCESS/UTILITY EXISTENT

LEASE NOTES

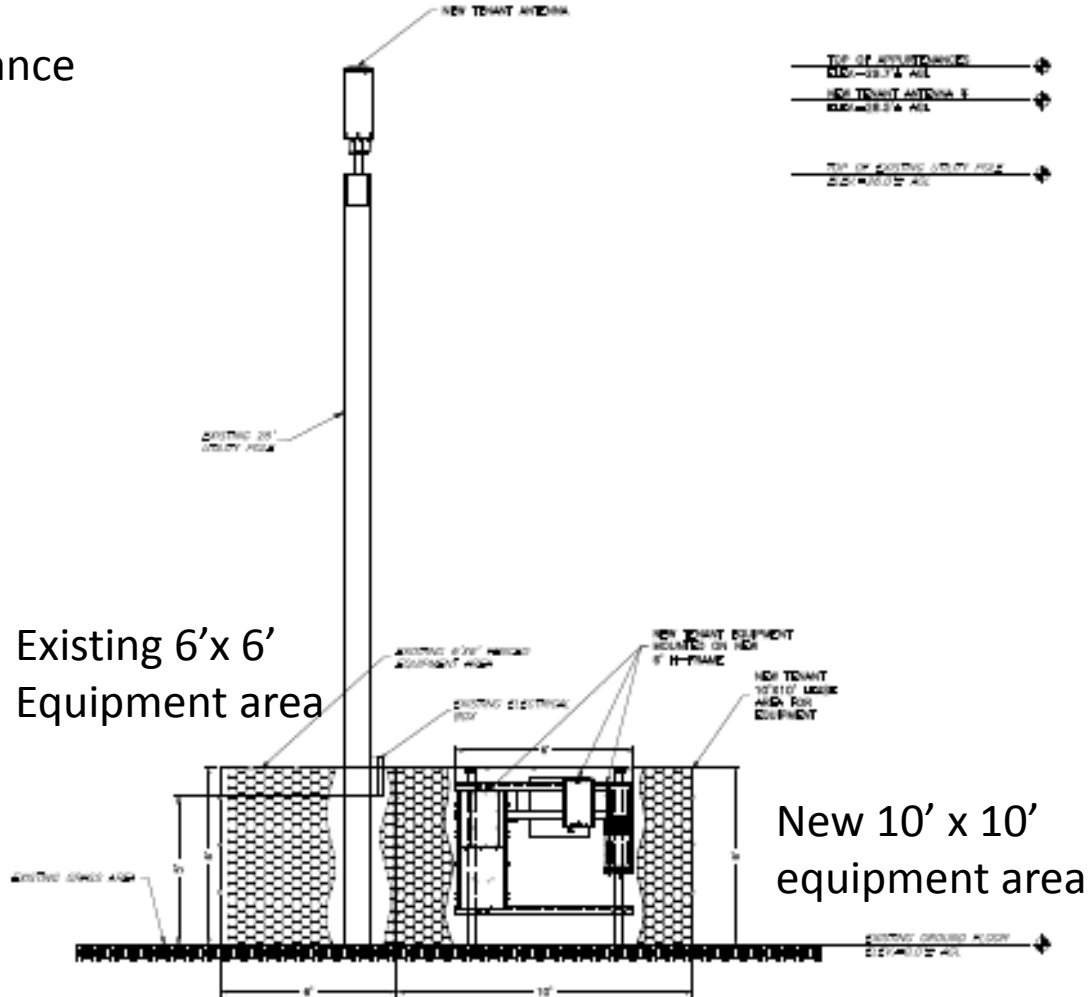
- 1 NEW 10'x14' 10'x14' LEASE AREA FOR EQUIPMENT
- 2 NEW 10'x14' ANTENNA TO BE MOUNTED ON TOP OF EXISTING UTILITY POLE

Bryan Park

29.7' top of appurtenance

28.5' Antenna

26' top of utility pole



Existing 6'x6'
Equipment area

New 10' x 10'
equipment area

ELEVATION

NOTE:
1. ANTENNA, EQUIPMENT & ENDSIDE(S)
SUBJECT TO CHANGE
2. EXACT PATH ROUTE TO BE DETERMINED
DURING TRANSPORT SITE RIGS