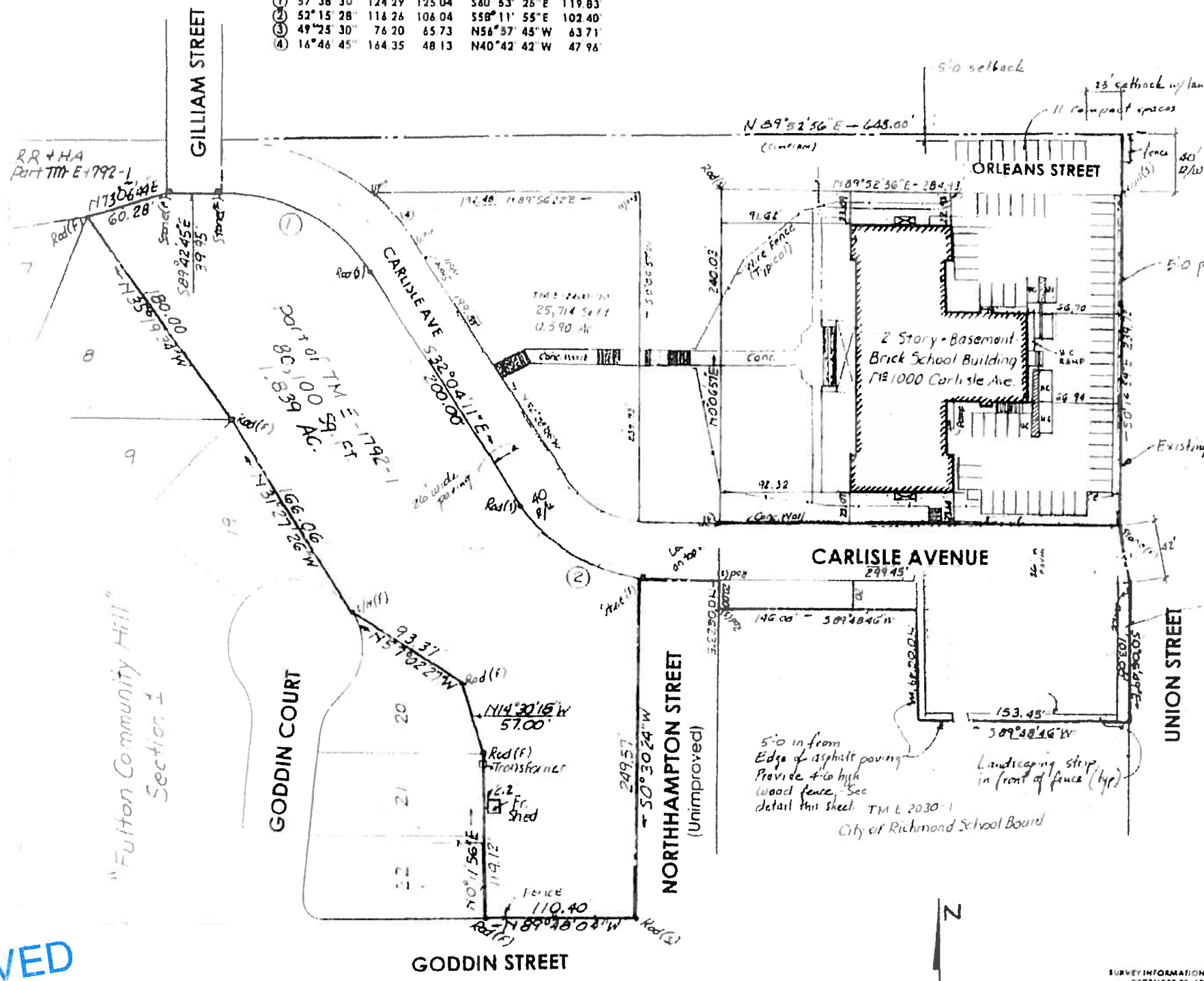


CURVE DATA	Δ	R	L	CHORD
①	57°38'30"	124.29	125.04	S80°53'26"E 119.83
②	52°15'28"	116.26	106.04	S58°11'55"E 102.40
③	49°25'30"	76.20	65.73	N56°57'45"W 63.71
④	16°48'45"	164.35	48.13	N40°42'42"W 47.96



**TYPICAL PARKING LAYOUT DIMENSIONS**

FOR 90 DEGREE STALLS  
 STALL WIDTH = 8' 6"  
 STALL DEPTH = 17' 6"  
 AISLE WIDTH = 23 FEET MINIMUM

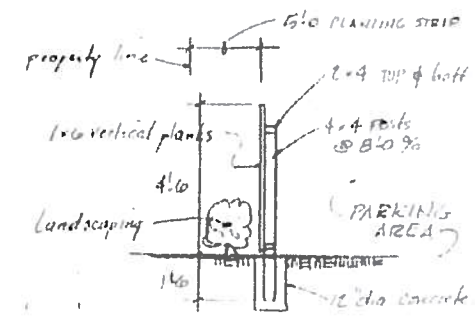
FOR PARALLEL PARKING  
 STALL LENGTH = 22 FEET  
 STALL WIDTH = 8 FEET  
 AISLE WIDTH = 18 FEET MINIMUM

COMPACT SPACES:  
 STALL LENGTH = 19' 0"  
 STALL WIDTH = 8' 0"

PARKING/PAVING TO MEET CITY STANDARDS

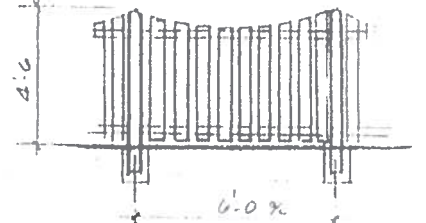
**TYPICAL LANDSCAPE PLANTING:**

1 LBY CRENATA, 18"-24" TALL  
 @ 3' 0" 9/8 W/ SHROPPED HARDWOOD MULCH



**TYP. FENCE DETAIL**

ALL WOOD TO BE MAINTAINED



**TYP. FENCE ELEV.**

OR OTHER APPROVED BY PLANNING DEPARTMENT

**Hanson Associates P.C.**  
 ARCHITECTS  
 215 E. Franklin St. Richmond, Virginia 23220  
 (804) 640-7122 FAX (804) 640-0144



PROJECT:

**FULTON STUDIOS PARKING PLAN**  
 RICHMOND, VIRGINIA

SHEET TITLE  
 IMPROVED PARKING PLAN

REVISIONS:  
 5/4/00  
 6/24/05  
 DATE:  
 4/2/00  
 DRAWN BY:  
 T. A. HANCOCK

SHEET NO.:

P1

RECEIVED  
 JUL 01 2015  
 LAND USE ADMINISTRATION

SURVEY INFORMATION TAKEN FROM  
 DECEMBER 20, 1999 PLAT  
 73 1634 39, 43, 46 & 47  
 LAPRADE BROS.  
 CIVIL ENGINEERS & SURVEYORS  
 3 WEST CARY STREET  
 RICHMOND, VIRGINIA

**SITE PLAN**

SCALE: 1" = 40'

TOTAL PARKING SPACES = 72  
 FULL SIZE 56  
 COMPACT 11  
 HANDICAP 5

