

RE-SUBMITTED - 6-6-2014

CAR # 14-37



Commission of Architectural Review
SUBMISSION APPLICATION

City of Richmond, Room 510 - City Hall
900 East Broad Street, Richmond, Virginia 23219
PHONE: (804) 646-6335 FAX: (804) 646-5789

12 COPIES OF SUPPORTING DOCUMENTATION ARE REQUIRED FOR PROCESSING YOUR SUBMISSION

LOCATION OF WORK: 1903 East Marshall Street DATE: April 25, 2014

OWNER'S NAME: GTR Cedar LLC TEL NO.: (804) 780-9067 x112
AND ADDRESS: c/o Marcellus Wright Cox Architects EMAIL: bcox@mwcarchitects.com
CITY, STATE AND ZIP CODE 7818 Shrader Road Richmond, Va. 23294

ARCHITECT/CONTRACTOR'S NAME: Marcellus Wright Cox Architects. TEL. NO. (804) 780-9067 x112
AND ADDRESS: 7818 Shrader Road EMAIL: bcox@mwcarchitects.com
CITY, STATE AND ZIP CODE Richmond, Virginia, 23294

Would you like to receive your staff report via email? Yes x No

REQUEST FOR CONCEPTUAL REVIEW

- ☐ I hereby request Conceptual Review under the provisions of Chapter 114, Article IX, Division 4, Section 114-930.6(d) of the Richmond City Code for the proposal outlined below in accordance with materials accompanying this application. I understand that conceptual review is advisory only.

APPLICATION FOR CERTIFICATE OF APPROPRIATENESS

- ☒ I hereby make application for the issuance of a certificate under the provisions of Chapter 114, Article IX, Division 4 (Old and Historic Districts) of the Richmond City Code for the proposal outlined below in accordance with plans and specifications accompanying this application.

DETAILED DESCRIPTION OF PROPOSED WORK (Required):

STATE HOW THE DESIGN REVIEW GUIDELINES INFORM THE DESIGN OF THE WORK

PROPOSED. (Include additional sheets of description if necessary, and 12 copies of artwork helpful in describing the project. The 12 copies are not required if the project is being reviewed for an administrative approval. See instruction sheet for requirements.)

Please refer to the GTR Cedar, LLC Apartments detailed description of the proposed work dated April 25, 2014. Additional documents include a site survey (sealed), site elevations indicating relationship to adjacent hill and park (across Marshall St.). Additional background information on the history of the zoning (public record) is available from the Secretary of the Commission.

Signature of Owner or Authorized Agent: X

Name of Owner or Authorized Agent (please print legibly):

R.G. Ben Cox

Marcellus Wright Cox Architects, P.C.

(Space below for staff use only)

Received by Commission Secretary

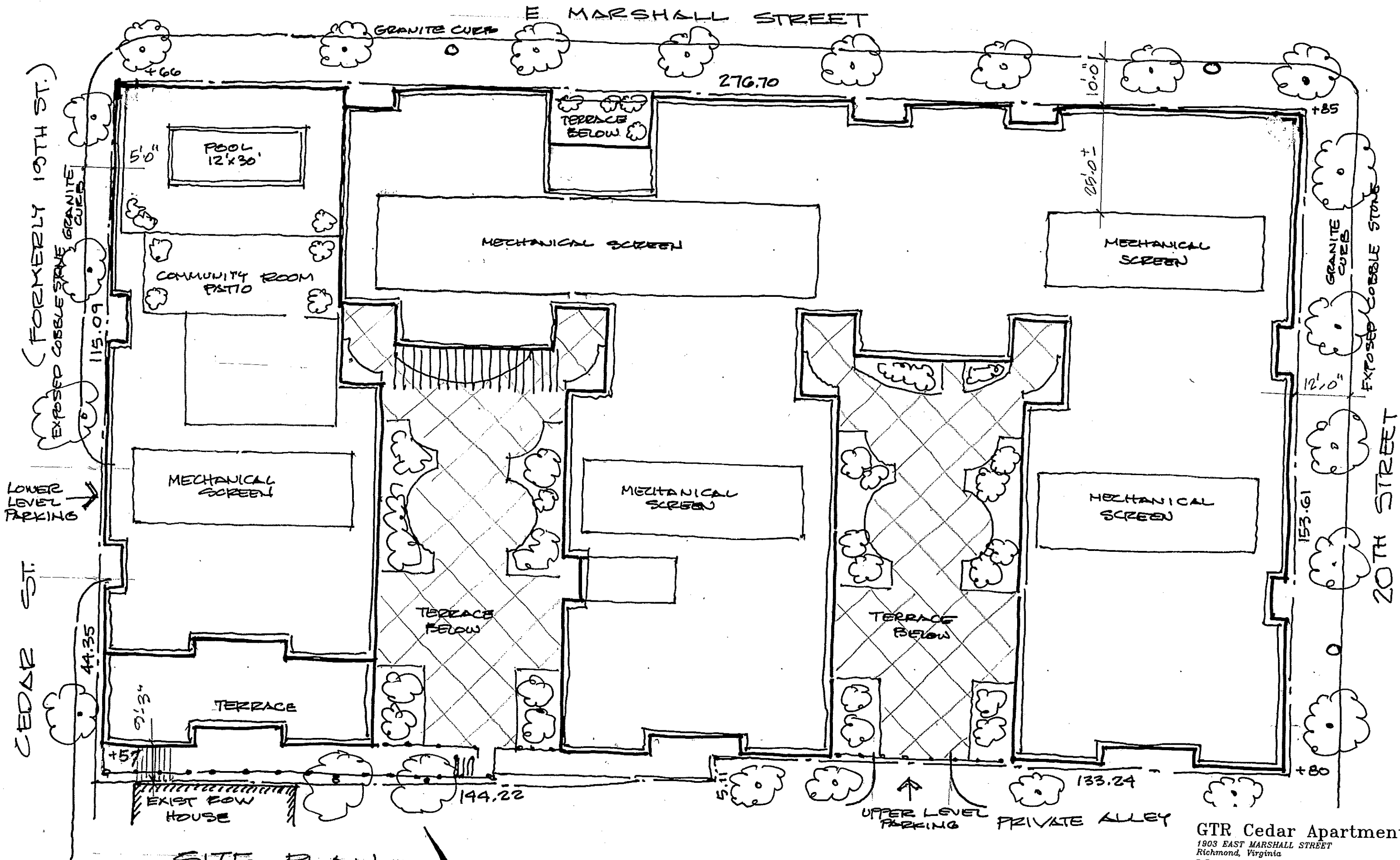
APPLICATION NO.

DATE

SCHEDULED FOR

Note: CAR reviews all applications on a case-by-case basis.

Revised 04-16-2013



SITE PLAN

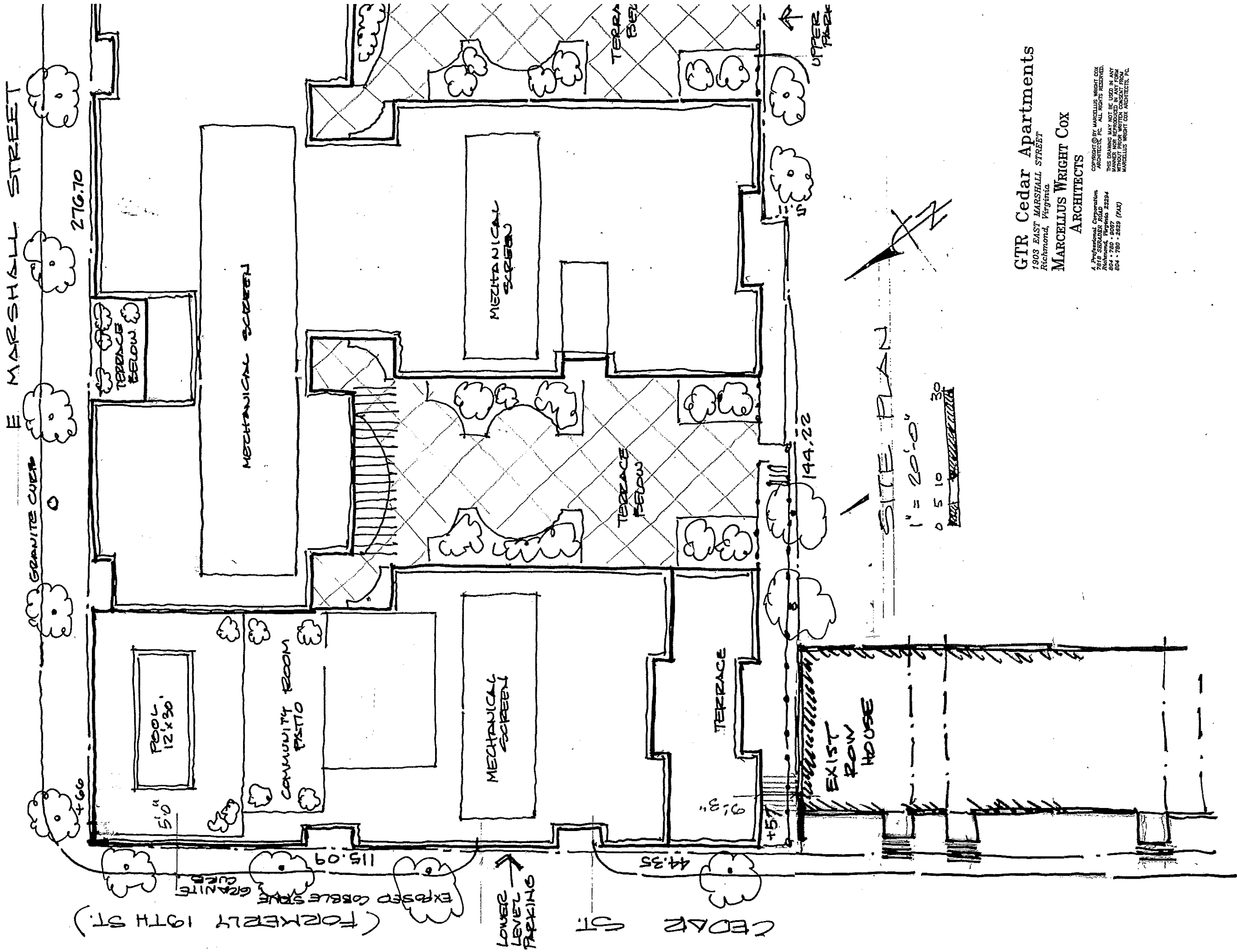
1" = 20'-0"

0 5 10 30

GTR Cedar Apartments
1903 EAST MARSHALL STREET
Richmond, Virginia
MARCELLUS WRIGHT COX
ARCHITECTS

A Professional Corporation
7819 SHRADER ROAD
Richmond, Virginia 23294
804 • 780 • 9067
804 • 780 • 2829 (FAX)

COPYRIGHT © BY MARCELLUS WRIGHT COX
ARCHITECTS, P.C. ALL RIGHTS RESERVED.
THIS DRAWING MAY NOT BE USED IN ANY
MANNER NOR REPRODUCED IN ANY FORM
WITHOUT PRIOR WRITTEN CONSENT FROM
MARCELLUS WRIGHT COX ARCHITECTS, P.C.



GTR Cedar Apartments
 1903 EAST MARSHALL STREET
 Richmond, Virginia
 MARCELLUS WRIGHT COX
 ARCHITECTS

Copyright © by Marcellus Wright Cox Architects, P.C. All rights reserved.
 This drawing may not be used in any form without prior written consent of Marcellus Wright Cox Architects, P.C.
 A Professional Corporation
 2018 SENECA ROAD
 RICHMOND, VIRGINIA 23294
 804 • 780 • 8087
 804 • 780 • 2825 (FAX)

SITE PLAN

1" = 20'-0"
 0 5 10 30



GTR Cedar Apartments
1903 EAST MARSHALL STREET
Richmond, Virginia
MARCELLUS WRIGHT COX
ARCHITECTS

A Professional Corporation
7818 SHRADER ROAD
Richmond, Virginia 23294
804 • 780 • 0067
804 • 780 • 2629 (FAX)

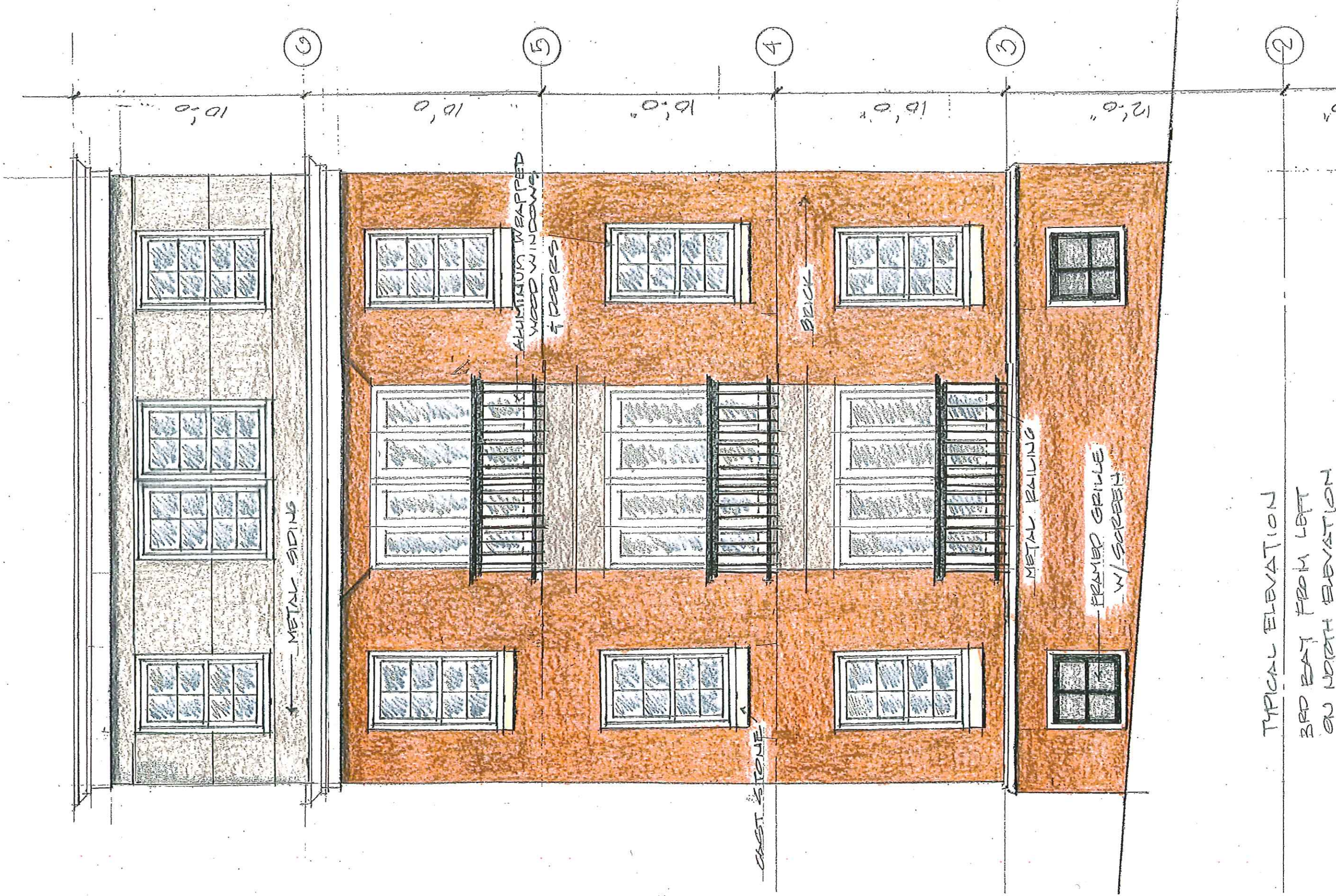
COPYRIGHT © BY MARCELLUS WRIGHT COX
ARCHITECTS, P.C. ALL RIGHTS RESERVED.
THIS DRAWING MAY NOT BE USED IN ANY
MANNER NOR REPRODUCED IN ANY FORM
WITHOUT PRIOR WRITTEN CONSENT FROM
MARCELLUS WRIGHT COX ARCHITECTS, P.C.



GTR Cedar Apartments
 1903 EAST MARSHALL STREET
 Richmond, Virginia
MARCELLUS WRIGHT COX
 ARCHITECTS

A Professional Corporation
 7818 SHRADER ROAD
 Richmond, Virginia 23294
 804 • 780 • 9057
 804 • 780 • 2629 (FAX)

COPYRIGHT © BY MARCELLUS WRIGHT COX
 ARCHITECTS, P.C. ALL RIGHTS RESERVED.
 THIS DRAWING MAY NOT BE USED IN ANY
 MANNER NOR REPRODUCED IN ANY FORM
 WITHOUT PRIOR WRITTEN CONSENT FROM
 MARCELLUS WRIGHT COX ARCHITECTS, P.C.



TYPICAL ELEVATION
3RD BAY FROM LEFT
ON NORTH ELEVATION

REV
5/27/14
5/28/14
6/12/14

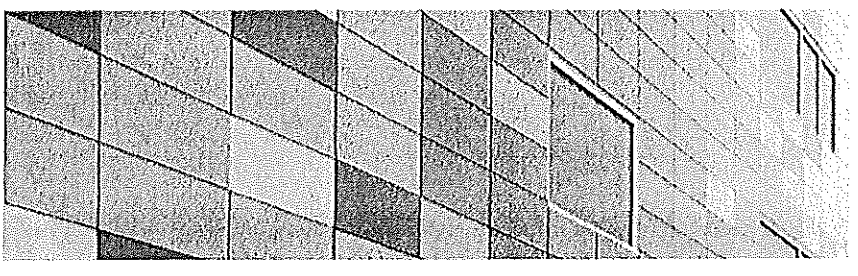
GTR Cedar Apartments
1903 EAST MARSHALL STREET
Richmond, Virginia
MARCELLUS WRIGHT COX
ARCHITECTS

A Professional Corporation
7818 STRADDER ROAD
Richmond, Virginia 23294
804 • 780 • 9057
and • 906 • 9058 (FAX)

COPYRIGHT © BY MARCELLUS WRIGHT COX
ARCHITECTS, P.C. ALL RIGHTS RESERVED.
THIS DRAWING MAY NOT BE USED IN ANY
MANNER WITHOUT THE WRITTEN
CONSENT OF MARCELLUS WRIGHT COX
ARCHITECTS, P.C.



FLAT METAL PANEL



Painted Aluminum

Dri-Design is an advanced and very sophisticated metal wall panel system...made simple.

The myriad of features in Dri-Design that you would expect to be expensive are made affordable thanks to the unique patented interlocking design and automated manufacturing process.

Dri-Design can be detailed as simple as installing over DuPont Commercial Grade Tyvek and plywood or designed as a sophisticated pressure equalized rain-screen with outboard insulation...your choice.

- No sealants, gaskets or butyl tape in the panel joints means no dirty streaks or maintenance.
- Dri-Design panels are not laminated nor a composite - they will never delaminate.
- Sustainability - the fact is, composite or foam panels can't match Dri-Design for its environmental footprint. Dri-Design is made with recycled content and is 100% recyclable.
- Fully tested to ASTM standards for air, water and structural performance.
- Tested to the latest AAMA 508.07 for pressure equalized rain screens that include passing a 15 pound water test.
- Hurricane tested and approved for Dade & Broward counties in Florida.
- Unlimited color palette.
- Unique interlocking panel design makes installation quick and easy.

Details & Specifications

System Depth:

1 1/2" nominal

Material:

Aluminum

Material thickness:

.050, .062, .080, .125

Panel joints:

5/8" - 1"

Finish:

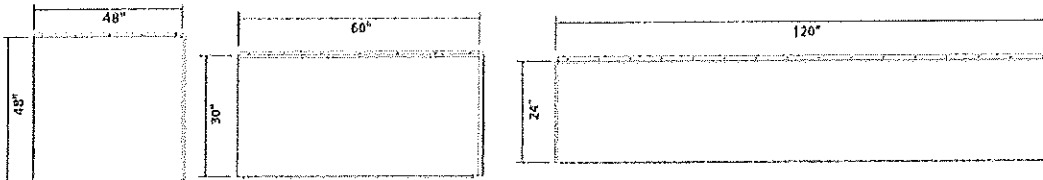
Kynar, unlimited color palette

Weight:

Less than 1 1/4 pounds per square foot

Panel Sizes:

These are the recommended maximum size panels, if your project requirements exceed these dimensions, please contact a Dri-Design representative to discuss your specific requirements.



Installation Considerations

A substrate must be used behind the Dri-Design Wall Panel System. Some substrate options are 5/8" plywood, DensGlass Gold® or exterior grade gypsum board. Plywood will hold a fastener, however if DensGlass Gold® or exterior grade gypsum board is utilized, a flat strap or hat girt will be required.

Weather Barrier

A weather barrier is required for all Dri-Design installations. Your specific design and details will determine whether the barrier needs to be breathable or not. Please call us at 816-355-2970 or e-mail sales@dri-design.com with any questions regarding your specific project.

Fasteners

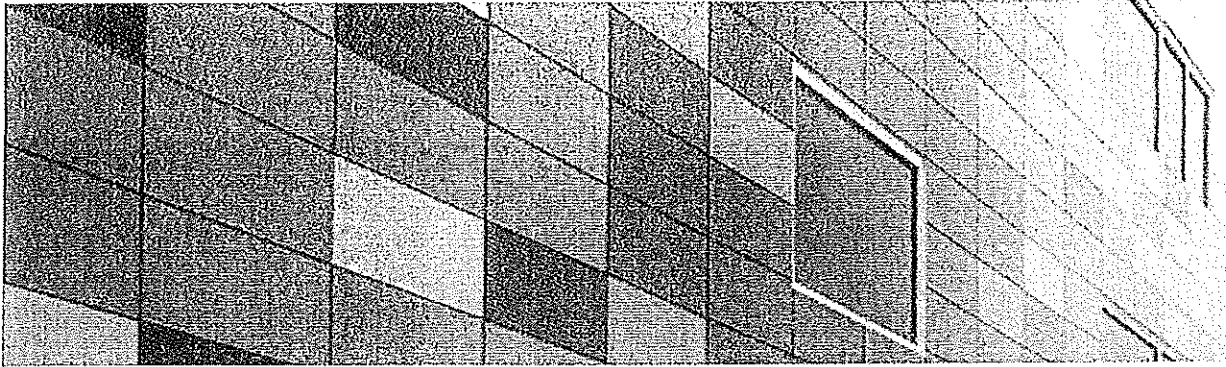
We recommend that stainless steel fasteners be used with neoprene or plastic washers.

Signs, Lighting and Handrails

Proper reinforcement must be installed behind the panels when attaching objects such as signs, lights and railings. DO NOT attach anything directly on the panels.

Visit our www.dri-design.com/dri-design/painted-aluminum for access to detailed information on each of our products.

GTA CEPAN



Painted Aluminum

Dri-Design is an advanced and very sophisticated metal wall panel system....made simple.

The myriad of features in Dri-Design that you would expect to be expensive are made affordable thanks to the unique patented interlocking design and automated manufacturing process.

Dri-Design can be detailed as simple as installing over DuPont Commercial Grade Tyvek and plywood or designed as a sophisticated pressure equalized rain-screen with outboard insulation...your choice.

- No sealants, gaskets or butyl tape in the panel joints means no dirty streaks or maintenance.
- Dri-Design panels are not laminated nor a composite - they will never delaminate.
- Sustainability - the fact is, composite or foam panels can't match Dri-Design for its environmental footprint. Dri-Design is made with recycled content and is 100% recyclable.
- Fully tested to ASTM standards for air, water and structural performance.
- Tested to the latest AAMA 508-07 for pressure equalized rain screens that include passing a 15 pound water test.
- Hurricane tested and approved for Dade & Broward counties in Florida.
- Unlimited color palette.
- Unique interlocking panel design makes installation quick and easy.

Details & Specifications

System Depth:

1 1/2" nominal

Material:

Aluminum

Material thickness:

.050, .062, .080, .125

Panel joints:

5/8" - 1"

Finish:

Kynar, unlimited color palette

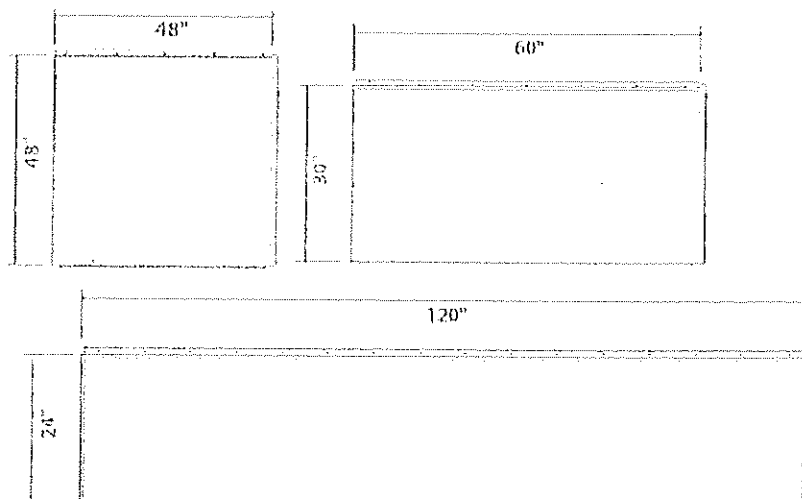
Weight:

Less than 1 1/2 pounds per square foot

Panel Sizes:

These are the recommended maximum size panels, if your project requirements exceed these dimensions, please contact a Dri-Design

representative to discuss your specific requirements.



Installation Considerations

A substrate must be used behind the Dri-Design Wall Panel System. Some substrate options are 5/8" plywood, DensGlass Gold® or exterior grade gypsum board. Plywood will hold a fastener, however if DensGlass Gold® or exterior grade gypsum board is utilized, a flat strap or hat girt will be required.

Weather Barrier

A weather barrier is required for all Dri-Design installations. Your specific design and details will determine whether the barrier needs to be breathable or not. Please call us at 616-355-2970 or e-mail sales@dri-design.com with any questions regarding your specific project.

Fasteners

We recommend that stainless steel fasteners be used with neoprene or plastic washers.

Signs, Lighting and Handrails

Proper reinforcement must be installed behind the panels when attaching objects such as signs, lights and railings. DO NOT attach anything directly on the panels.

Visit our [website](#) for access to detailed information on each of our products.

Dri-Design is a friend of the environment. The fact is, composite or foam panels can't match Dri-Design for its environmental footprint.



Request Information

- [Home](#)
- [Contact Us](#)
- [Submit a File](#)
- [Press Releases](#)

1-WIDE UNITS

M.O. BRICKMOLD
M.O. ADAMS/FLAT CASING
ROUGH OPENING
UNIT SIZE
DAYLIGHT OPENING

24 5/8" (625)
27 11/16" (703)
22 1/8" (562)
21 3/8" (543)
15 7/16" (392)

26 5/8" (722)
31 11/16" (805)
26 1/8" (664)
25 3/8" (645)
19 7/16" (494)

32 5/8" (829)
35 11/16" (906)
30 1/8" (765)
29 3/8" (746)
23 7/16" (595)

34 5/8" (879)
37 11/16" (952)
32 1/8" (816)
31 3/8" (797)
25 7/16" (646)

36 5/8" (930)
39 11/16" (1009)
34 1/8" (877)
33 3/8" (858)
27 7/16" (697)

38 5/8" (980)
41 11/16" (1059)
36 1/8" (916)
35 3/8" (899)
29 7/16" (740)

40 5/8" (1032)
43 11/16" (1110)
38 1/8" (968)
37 3/8" (949)
31 7/16" (799)

62 1/2" (1588)
62 1/2" (1588)
62 1/2" (1588)
62 1/2" (1588)
62 1/2" (1588)

66 1/2" (1689)
66 1/2" (1689)
66 1/2" (1689)
66 1/2" (1689)
66 1/2" (1689)

70 1/2" (1781)
70 1/2" (1781)
70 1/2" (1781)
70 1/2" (1781)
70 1/2" (1781)

74 1/2" (1892)
74 1/2" (1892)
74 1/2" (1892)
74 1/2" (1892)
74 1/2" (1892)

78 1/2" (1994)
78 1/2" (1994)
78 1/2" (1994)
78 1/2" (1994)
78 1/2" (1994)



CCD2160



CCD2560



CCD2960



CCD3160



CCD3360



CCD3560



CCD3760



CCD2164



CCD2564



CCD2964



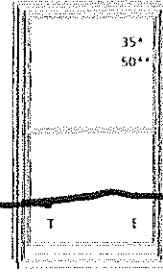
CCD3164



CCD3364



CCD3564



CCD3764



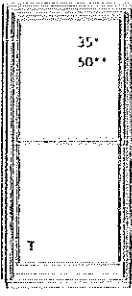
CCD2168



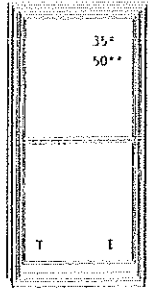
CCD2568



CCD2968



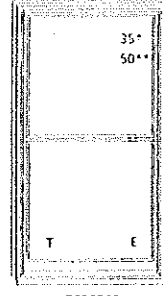
CCD3168



CCD3368



CCD3568



CCD3768



CCD2172



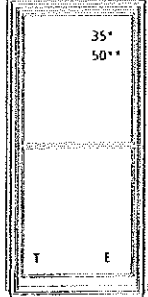
CCD2572



CCD2972



CCD3172



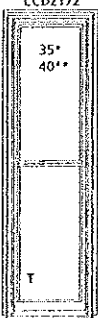
CCD3372



CCD3572



CCD3772



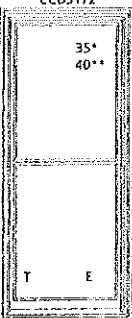
CCD2176



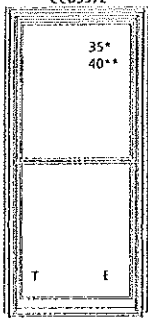
CCD2576



CCD2976



CCD3176



CCD3376



CCD3576



CCD3776

ELEVATION SYMBOL LEGEND:

M.O. = MASONRY OPENING
VALUES IN () ARE IN MILLIMETER CONVERSIONS

E BASIC UNIT CLEAR OPENING EXCEEDS 20" IN WIDTH, 24" IN HEIGHT & A MINIMUM OF 5.7 SQ. FT.

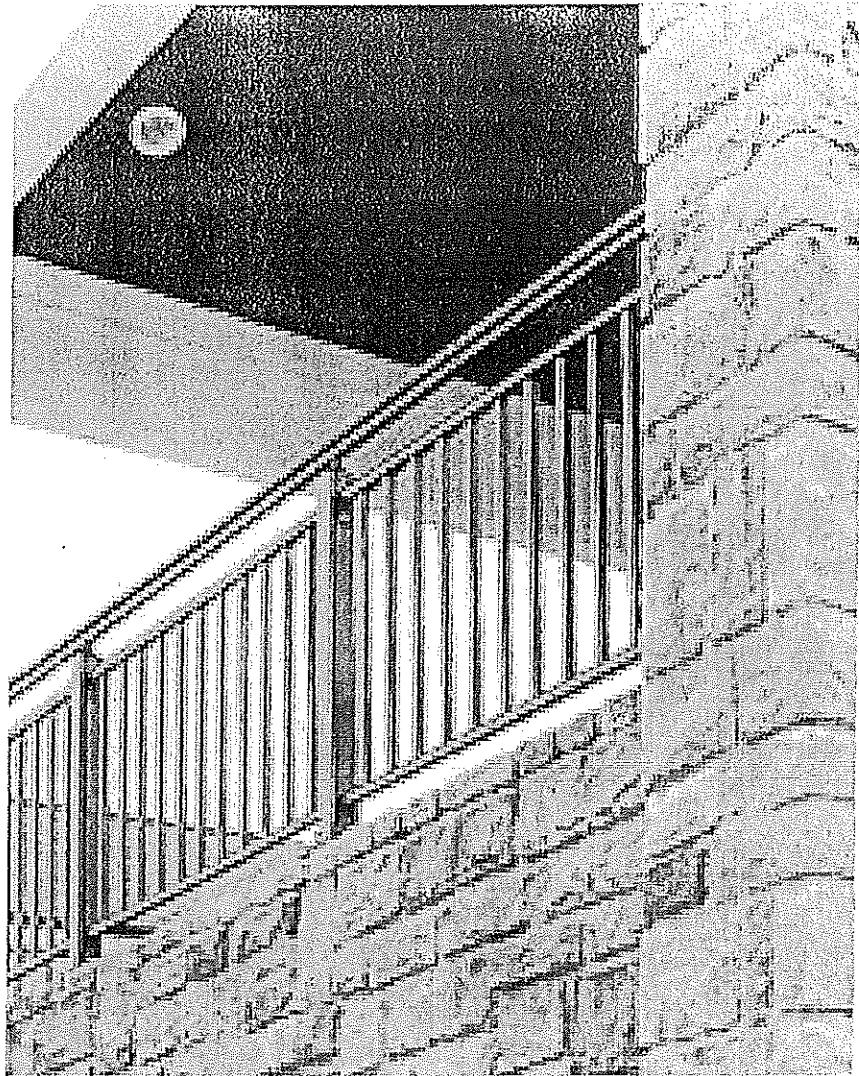
T BASIC UNIT IS NOT AVAILABLE WITH TRIPLE GLAZE, IMPACT RESISTANT, OR SAFETY LAMINATED GLASS.

##* NUMBER INDICATES DESIGN PRESSURE (DP) RATING WITH STANDARD GLAZING.

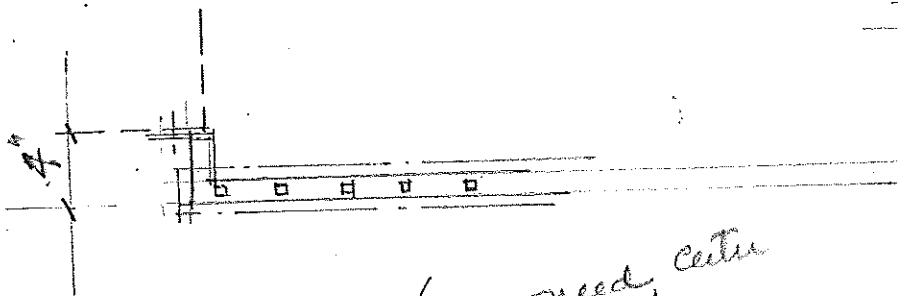
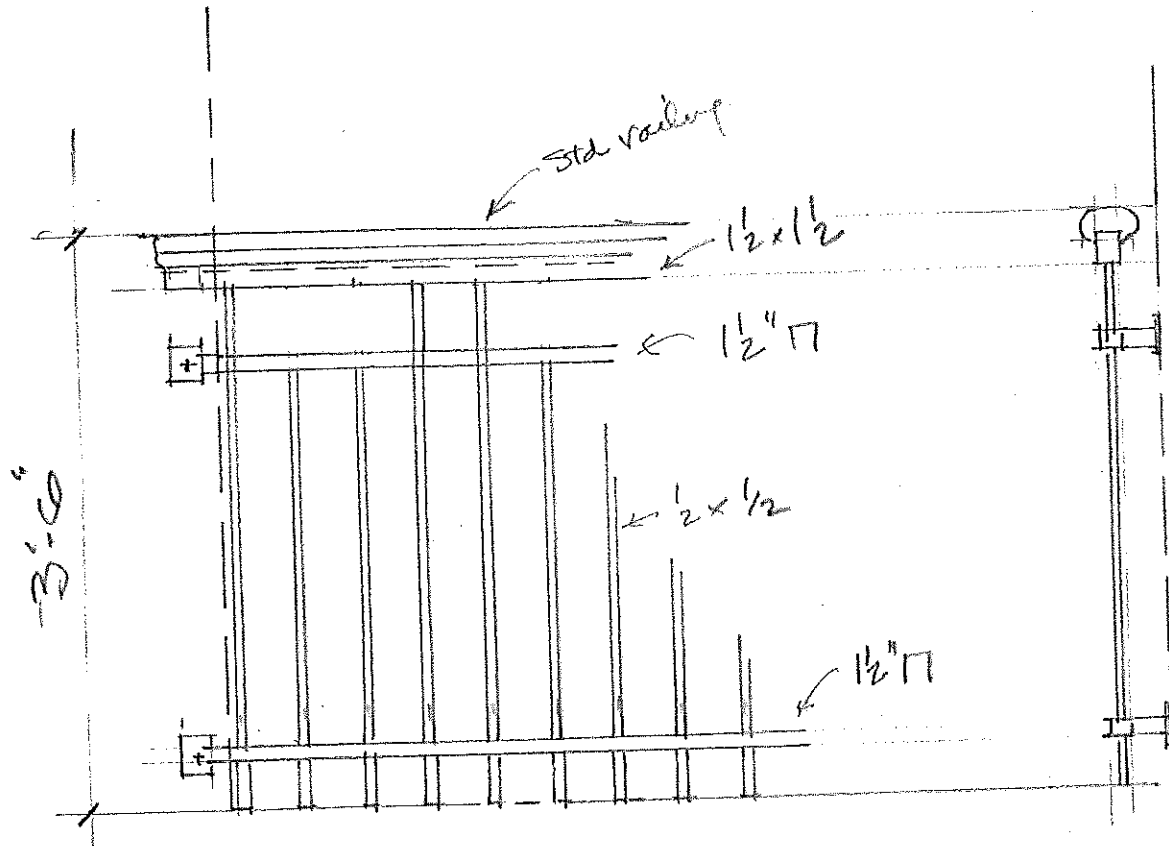
##** REQUIRES APPLICATION OF STOOL FOR WATER RESISTANCE. THIS APPLICATION REDUCES CLEAR OPENING VERTICALLY. STOOL ADDS 3/8" (10) MINIMUM TO HEIGHT OF INTERIOR SILL STOP.

Note: Elevations shown DO NOT have exterior trim. Subtract 1/2" (12.7) from M.O. (Masonry Opening) for Unit Sizes. Masonry Openings above include Sill Nose, see Trim Options page for Sill Nose specifications. For other Trim Options refer to the Unit Sizing, Rough Opening & Masonry Openings page.

SCALE: 1/4" = 1'



METAL RAIL



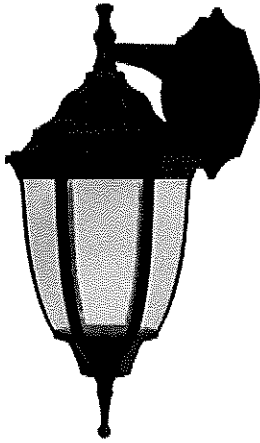
RAILING DETAIL

1" 1'-0"

5/28

(May need center bracket to door frame)

Lighting at Building Entry



Designers Fountain 7103LED Lexington Energy Smart Outdoor Wall Light

CAPITOL ID: 1808109

PART #: 7103LED-05

Dimensions

- Height: 14.00 inches
- Width: 6.50 inches
- Length: 7.75 inches
-

Product Overview for the Designers Fountain 7103LED Outdoor Wall Light

The Designers Fountain Lexington 7103LED is a traditional outdoor wall light available in and Black finish. The traditional style is sure to complement any decor. This outdoor wall light from the Designers Fountain Lexington collection is Energy Star rated.

- Lamping: - LED 6 Watt
- Lamp Type: LED
- Voltage: Line Voltage (120 volts)
- UL Listing: Wet Locations
- Energy Star: Energy Star Rated
-

<http://www.1800lighting.com/Designers-Fountain/Lexington/item.cfm?itemsku=7103LED%2D05>

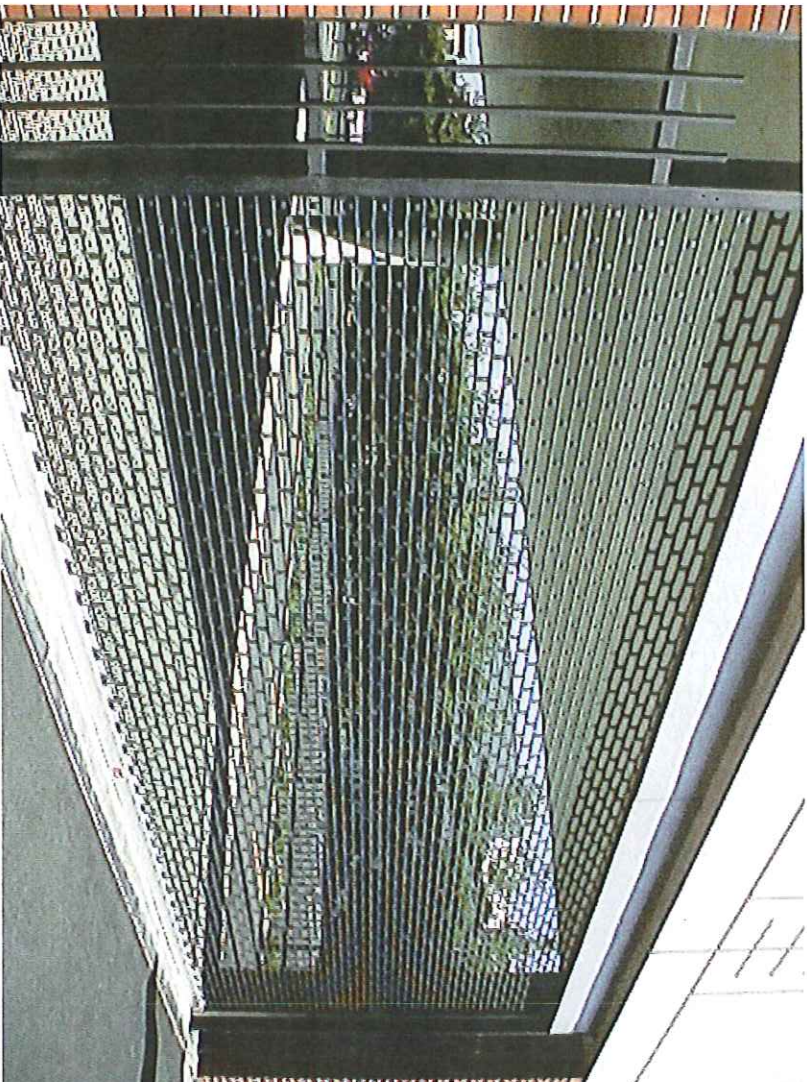
al locking on bottom bar only. Consult Cornell for details.
the Security Grille page.

ate Grilles -
arbonate links in
d spacing. 3 Phase
ings and greasable

igless shaft design
d manual locking
ornell for details.

ntry Gate Grilles

ervice and
nce Rubber Doors.



VEHICULAR ENTRY GRILLE
W/ PEDESTRIAN GATE



Roof Equipment Screens

[Home](#)
[Products](#)
[Applications](#)
[Design Help](#)
[How It Works](#)
[Contact Us](#)
 Model Search

Std. Mount to Framing

- [2" Deep Horizontal Blades](#)
 - V2KS- Standard Blade
- [4" Deep Horizontal Blades](#)
 - V4JS- Standard Blade
 - V4YH- Vision Proof Blade
- [4" Deep Vertical Blade](#)
 - V4YV- Vision Proof Blade
- [6" Deep Horizontal Blades](#)
 - V6JN- Narrow Profile Blade

Direct Mount to AHU

- [2" Deep Direct Mount](#)
 - V2KSD- Standard Blade
- [4" Deep Direct Mount](#)
 - V4JSD - Standard Blade
 - V4YHD- Vision Proof Blade

© 2014 Harray, LLC
dba Architectural Louvers,
all rights reserved

Louvered Roof Equipment Screens

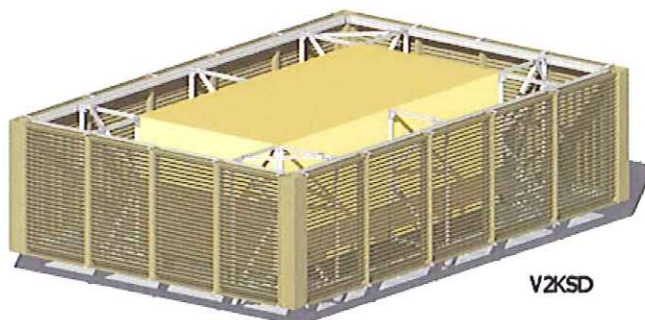
Louvers can be used as vision barriers to hide mechanical equipment and other unsightly items. Louver blades allow airflow and reduce the wind loads imposed on structural framing.

Standard Mount Styles for Connecting to Structural Framing



Direct Mount Styles for Attachment to Mechanical Equipment

Direct Mount design for air handler surrounds is available - [Model V2KSD](#), [Model V4JSD](#), and [Model V4YHD](#). These roof screen models include heavy duty structural framing, attachment hardware, and louvered door panels (hinged for access).



Product Design for Standard Mount Styles

Roof equipment screens are offered in several models to allow flexibility in design. Blades can run vertical or horizontal to mesh with surrounding facade and architectural lines. There are also various blade depths to allow for your desired blade spacing. Our latest [Model V6JN](#) (shown below) offers the greatest design flexibility with 3", 4", or 5" blade spacing.



Since the typical line of sight is from the ground on most buildings, a horizontal blade equipment screen with standard blade profiles will have the blades inverted to eliminate all sight-through from ground level. If the blades run vertical, a "sight-proof" blade profile should be used to ensure complete obscurity of equipment when viewed from various angles.

If you do not find the "look" you desire in your browsing, please contact us for a custom design. The possibilities for equipment screens are endless..

A variety of finishes are available from our [Equipment Screens Finishes](#) selection chart. Roof screens can be painted with a baked enamel or Kynar 500 finish, or anodized aluminum. A variety of standard colors are available. Custom colors can be selected by sending us a color chip. We will use our computer color match

Supporting Documents:

- [Available Finishes](#)
- [Product Brochure \(.pdf\)](#)
- [Wind Load Characteristics \(.pdf\)](#)
- [LEED information](#)

Reduce the wind load on your structural framing

With our Louvered Equipment Screens you can reduce the lateral wind load on your structural framing by as much as 71% (varies by model). A solid wall is listed as a reference and carries a coefficient of 1. Equipment screen coefficients are shown in the chart below (excludes any effects created by structural framing):

Wind Load Coefficients

Model	Horizontal	Vertical
V6JN5	0.29	0.24
V6JN4	0.31	0.23
V6JN3	0.35	0.19
V4JS	0.63	0.30
V2KS	0.66	0.16
V4YH	0.81	0.00
V4YV	0.81	0.00
Solid Wall	1.00	0.00

If imposed lateral wind load is 30 psf, a solid wall will have a horizontal load of 30 psf (coefficient 1 x 30 psf) and a vertical load of 0 psf (coefficient 0 x 30 psf).

Correspondingly, model V4JS will have a horizontal load of 18.9 psf (coefficient 0.63 x 30 psf) and a vertical load (upward) of 9.0 psf (coefficient 0.30 x 30 psf).



CONCEPT for
CEDAR STREET PEDESTRIAN ENTRY
ADJACENT to ROW HOUSES