

An architectural rendering of a single-story cottage renovation. The house features a mix of white horizontal siding, light brown vertical siding, and dark grey/black accents around the windows and roofline. A small set of stairs leads to a side entrance. The front yard is landscaped with a brick walkway, a gravel area, and several planters containing green shrubs, purple flowers, and tall green plants. A large tree with green leaves stands behind the house, and a tree with orange leaves is on the left. The sky is blue with scattered clouds.

THE WINFREE COTTAGE RENOVATION

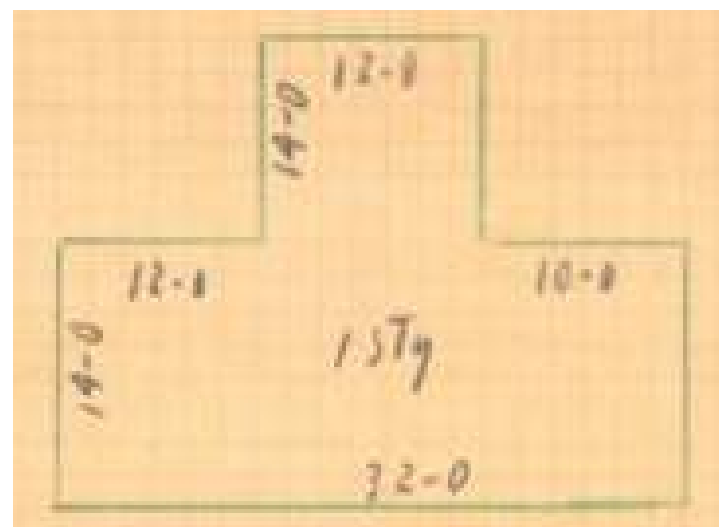
UDC SUBMISSION
OCT. 19, 2023



PORTRAIT OF EMILY WINFREE



GRAVESTONE OF EMILY WINFREE



ORIGINAL FOOTPRINT AND PHOTO



ORIGINAL PLOT LOCATION





2000



2006



2016



2023



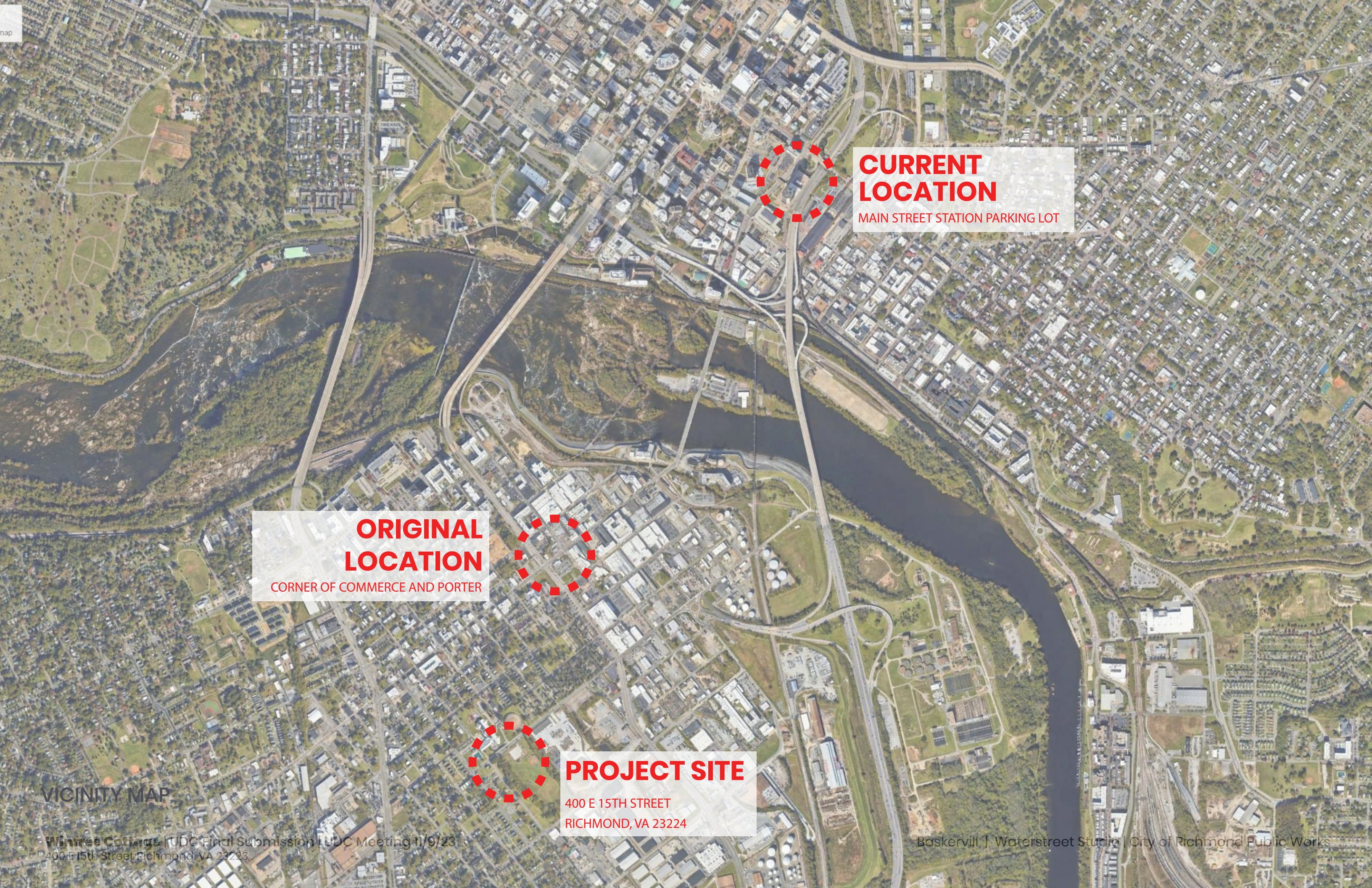
MANTLE TO BE RESTORED,
FIREPLACE AND CHIMNEY **WILL**
NOT BE OPERATIONAL



EXISTING WINFREE COTTAGE
SIGNAGE TO BE RELOCATED TO
PROJECT SITE



EXISTING CONDITIONS



CURRENT LOCATION

MAIN STREET STATION PARKING LOT

ORIGINAL LOCATION

CORNER OF COMMERCE AND PORTER

PROJECT SITE

400 E 15TH STREET
RICHMOND, VA 23224

VICINITY MAP

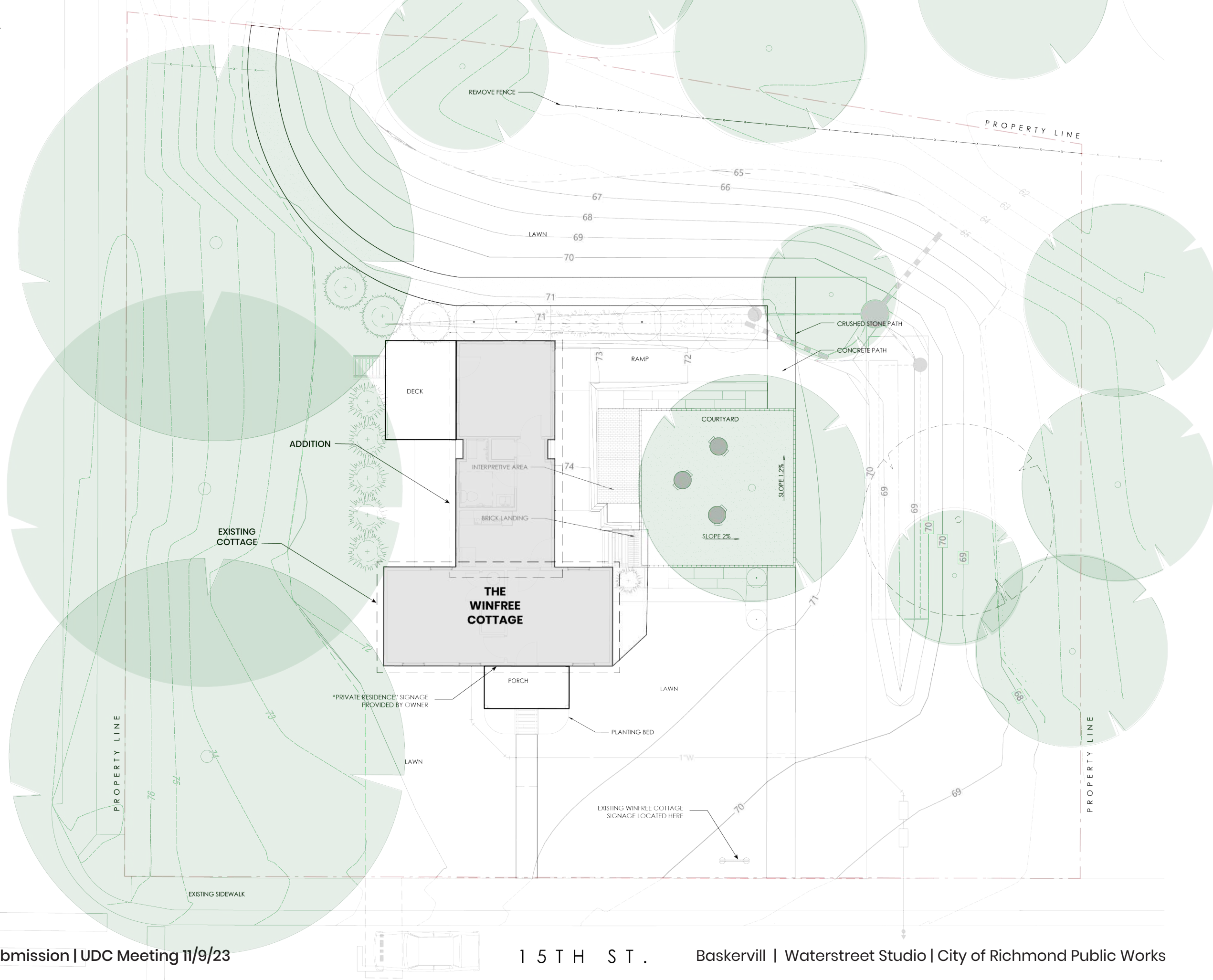
CHARLIE SYDNOR PARK
& PLAYGROUND

J.H. BLACKWELL
ELEMENTARY SCHOOL &
COMMUNITY CENTER

MAURY ST.

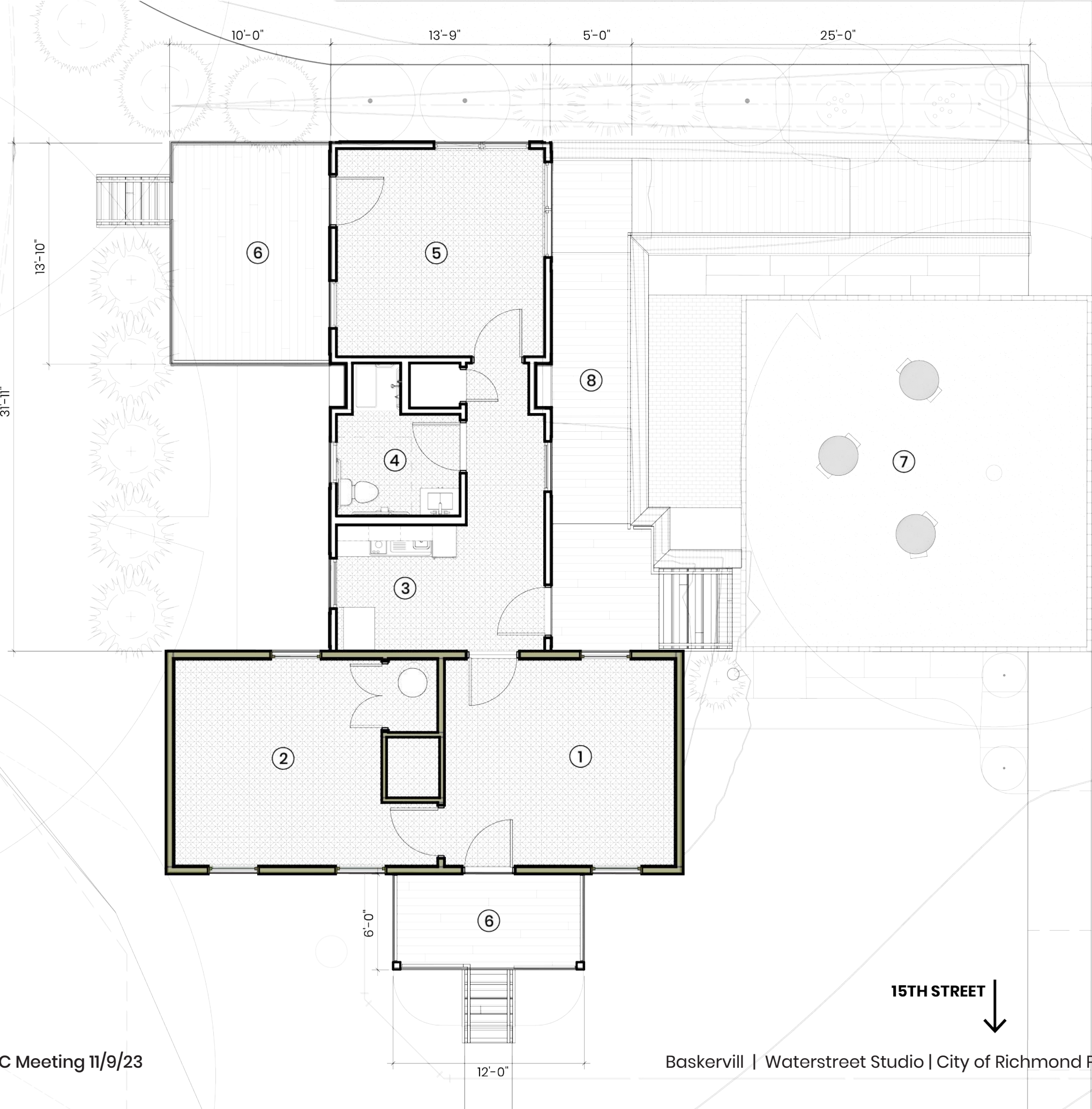
SITE PLAN

0 5' 10' 20'



ROOM LAYOUT

- ① LIVING ROOM
- ② STUDIO / OFFICE
- ③ KITCHEN
- ④ BATHROOM
- ⑤ BEDROOM
- ⑥ PORCH
- ⑦ COURTYARD
- ⑧ RAMP



MAURY ST.



FLOOR PLANS LEVEL 1



15TH STREET



EXTERIOR MATERIALS

- 1

WOOD SIDING – REPAIRED/REPLACED
- 2

ORIGINAL STEEL ROOF
- 3

BRICK
- 4

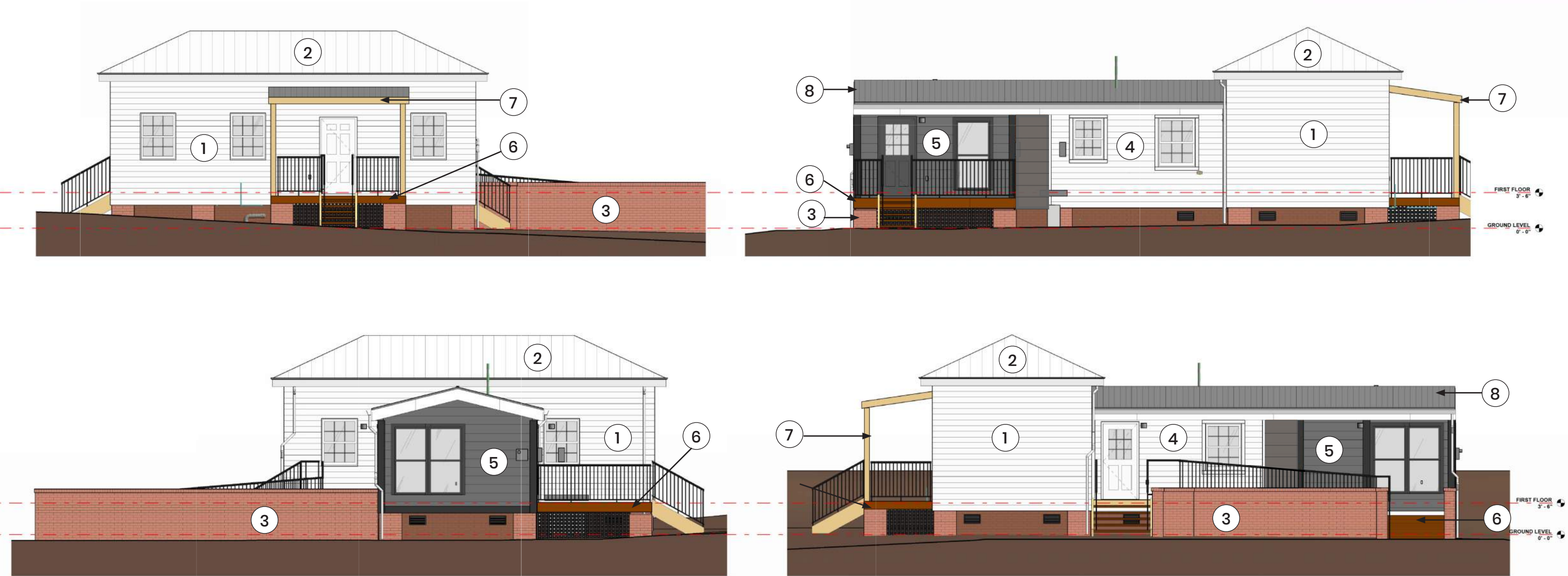
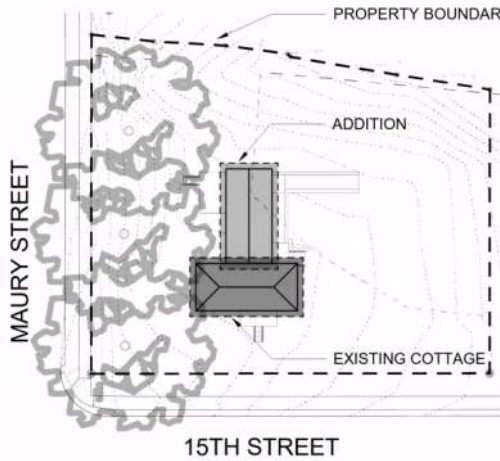
FIBER CEMENT BOARD
- 5

FIBER CEMENT ARCHITECTURAL PANEL
- 6

COMPOSITE WOOD DECK
- 7

WOOD STAINED TO MATCH PORCH DECK
- 8

STANDING SEAM METAL ROOF



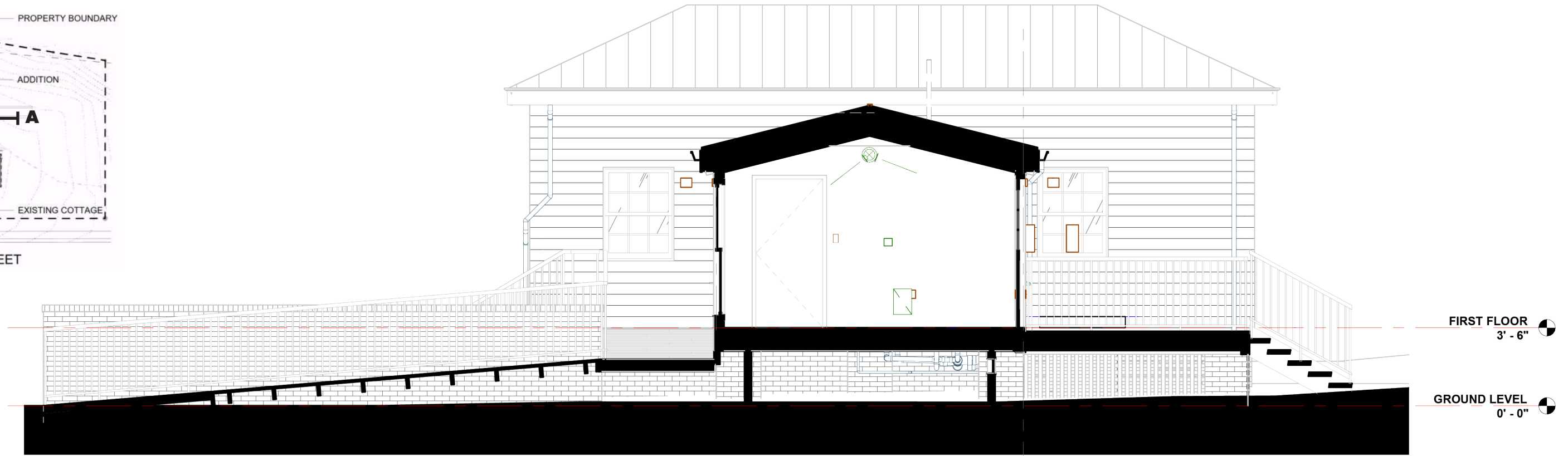
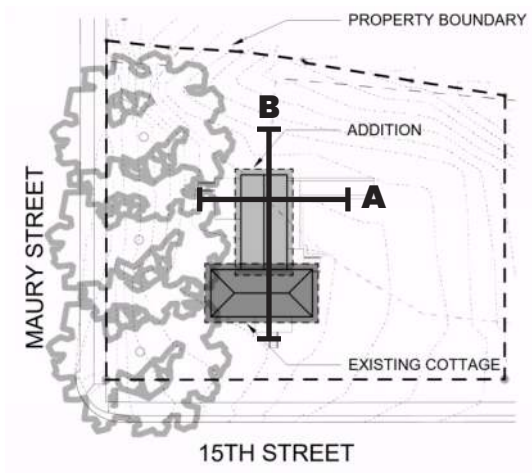
ELEVATIONS



PROPOSED
EXTERIOR
MATERIALS

- 1 QUERCUS NUTTALLII (OAK)
- 2 CRUSHED STONE
- 3 COMPOSITE DECKING
- 4 BRICK PAVERS
- 5 STANDING SEAM METAL ROOFING
- 6 FIBER CEMENT BOARDS
- 7 FIBER CEMENT ARCHITECTURAL PANEL
- 8 BRICK



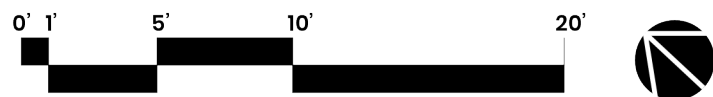


SECTION A



SECTION B

BUILDING SECTIONS



WAC LIGHTING

Cylinder
Wall Mount 3000K



FEATURES

- Multiple LED array for uniform illumination
- ACLED driverless technology
- 5 Year warranty

SPECIFICATIONS

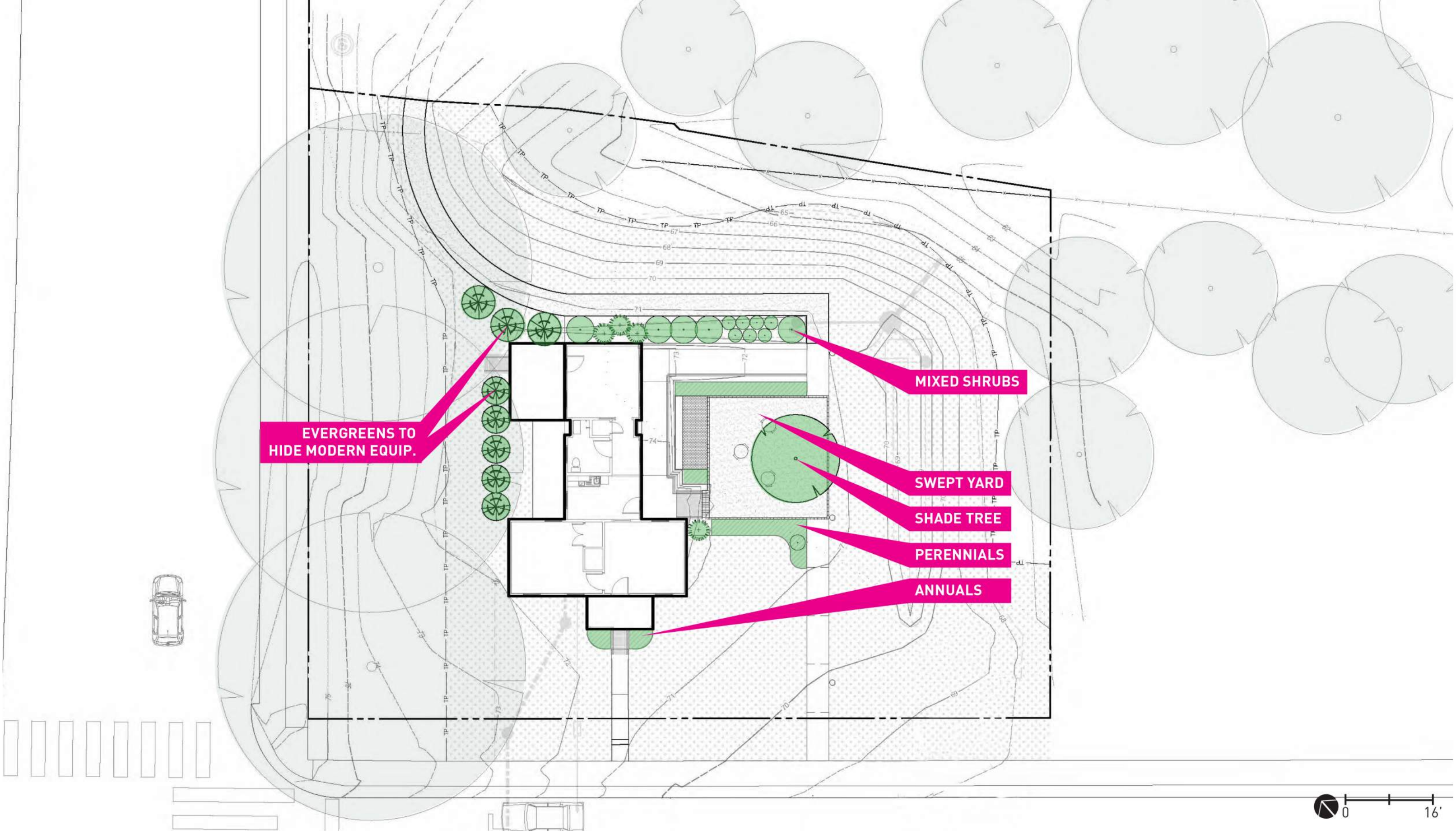
Construction:	Die-cast aluminum
Power:	18W, 6W
Input:	120 VAC, 50/60Hz
Dimming:	ELV: 100-10%
Light Source:	Integrated LED
Lens:	Glass Lens
Rated Life:	50000 Hours
Mounting:	Installs over a 3" or 4" Junction Box, Can be mounted on wall in all orientations
Finish:	Electrostatically Powder Coated White, Bronze, Black
Operating Temp:	-40°F to 122°F (-40°C to 50°C)
Standards:	ETL, cETL, Wet Location Listed, ADA

MAURY ST.



EXTERIOR LIGHTING SCHEME





LANDSCAPE PLAN



RENDERING
VIEWS