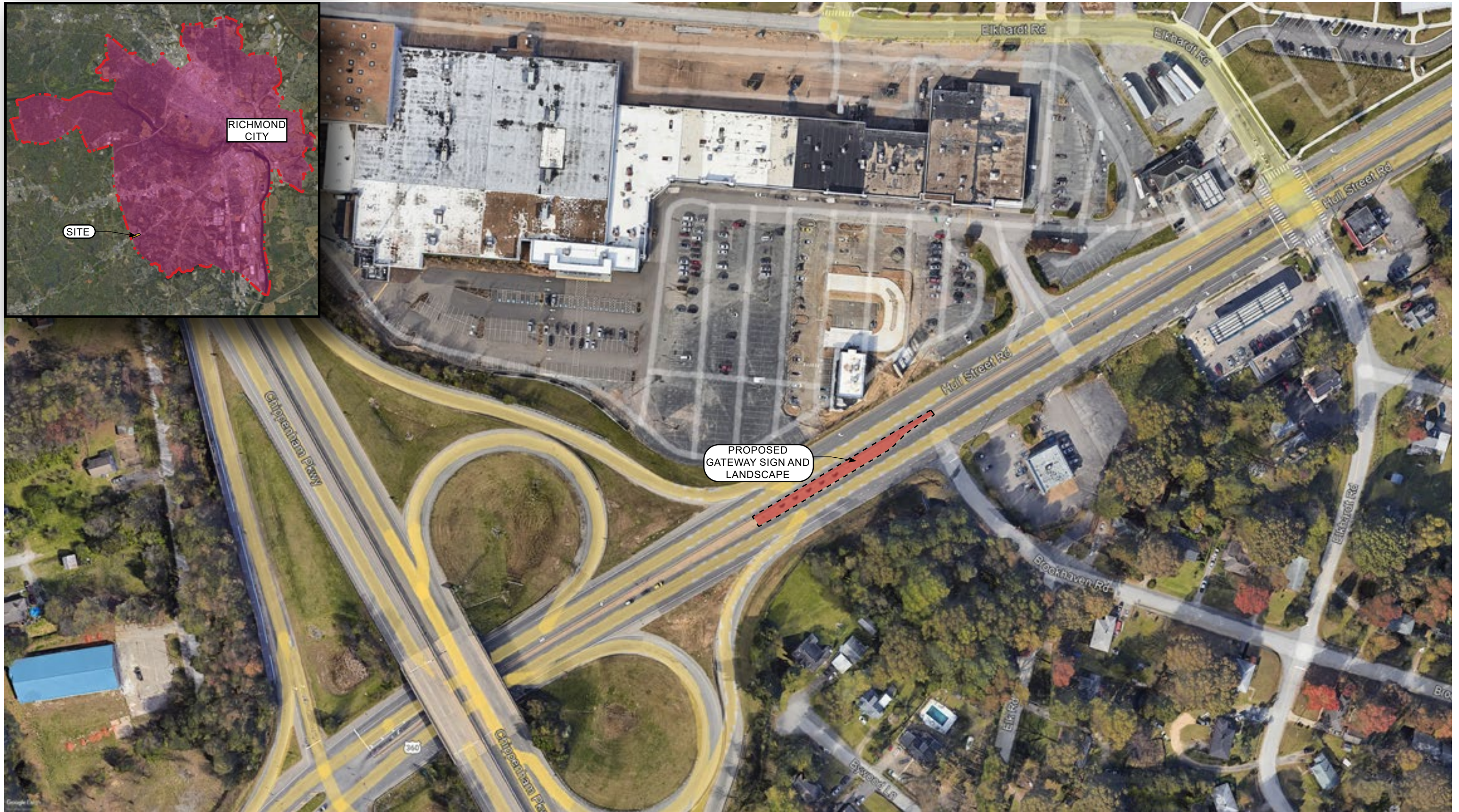


City of Richmond - Hull Street Gateway Sign  
Urban Design Committee | Final Review  
Submission Date: September 14, 2023  
UDC Meeting Date: October 5, 2023







## PROJECT LOCATION

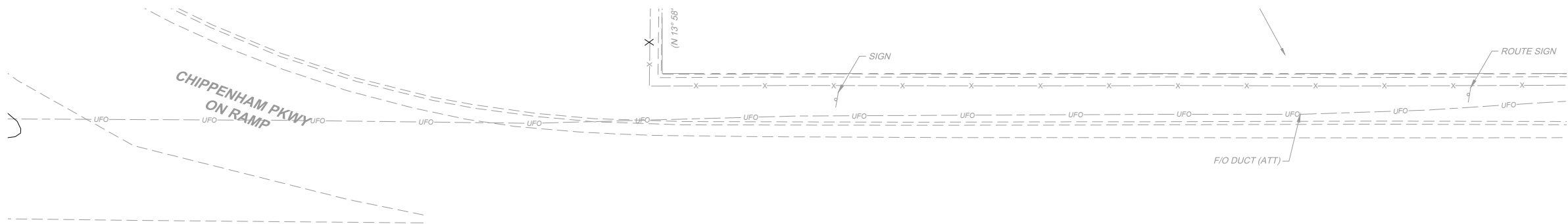
Hull Street Gateway Sign | Urban Design Committee | Final Review | 9/14/23  
6500 Block of Hull Street Rd. Richmond, VA 23220





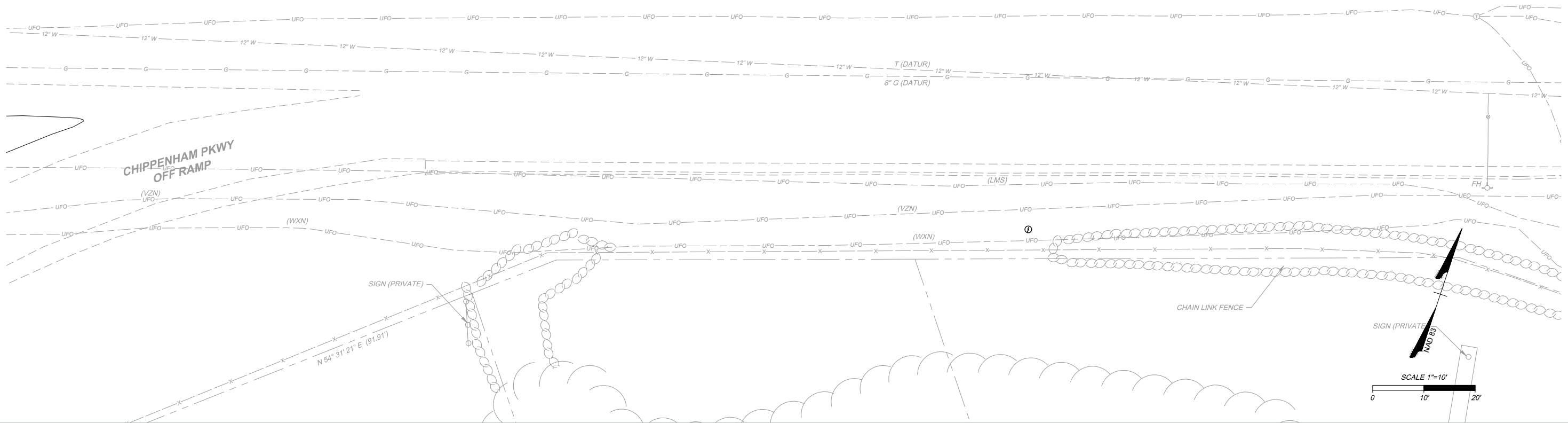
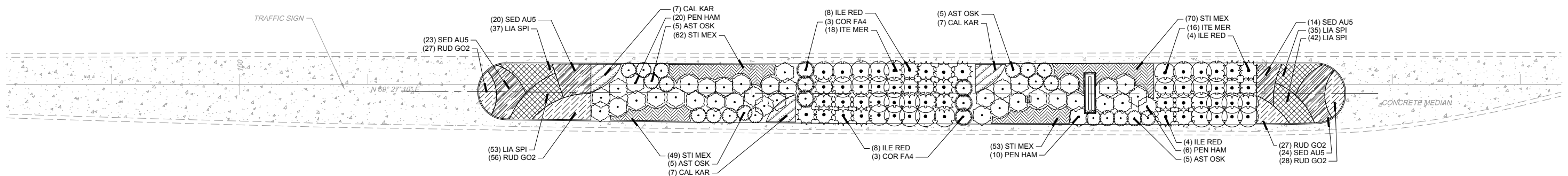






PLANT SCHEDULE	
SHRUBS	BOTANICAL NAME
AST OSK	ASTER OBLONGIFOLIUS 'OCTOBER SKIES'
COR FA4	CORNUS SERICEA 'FARROW'
ILE RED	ILEX VERTICILLATA 'RED SPRITE'
ITE MER	ITEA VIRGINICA 'MERLOT'
ORNAMENTAL GRASSES	
PEN HAM	PENNISETUM ALOPECUROIDES 'HADELN'
ORNAMENTAL GRASSES	
CAL KAR	CALAMAGROSTIS X ACUTIFLORA 'KARL FOERSTER'
STI MEX	STIPA TENUISSIMA
PERENNIALS	
LIA SPI	LIATRIS SPICATA
RUD GO2	RUDBECKIA FULGIDA SULLIVANTII 'GOLDSTURM'
SED AU5	SEDUM X 'AUTUMN FIRE'

HULL STREET  
(RTE. 360)



LANDSCAPE PLAN



GENERAL NOTES

PRE-CONSTRUCTION

- CONTRACTOR IS RESPONSIBLE FOR CONTACTING "MISS UTILITY" AT 1.800.552.7001 FOR LOCATION OF ALL UTILITY LINES.TREES SHALL BE LOCATED A MINIMUM OF 5 FEET FROM SEWER/WATER CONNECTIONS. NOTIFY LANDSCAPE ARCHITECT OF CONFLICTS.
- VERIFY ALL PLANT MATERIAL QUANTITIES ON THE PLAN PRIOR TO BIDDING, PLANT LIST TOTALS ARE FOR CONVENIENCE ONLY AND SHALL BE VERIFIED PRIOR TO BIDDING.
- PROVIDE PLANT MATERIALS OF QUANTITY, SIZE, GENUS, SPECIES, AND VARIETY INDICATED ON PLANS. ALL PLANT MATERIALS AND INSTALLATION SHALL COMPLY WITH RECOMMENDATIONS AND REQUIREMENTS OF ANSI Z60.1 "AMERICAN STANDARD FOR NURSERY STOCK". IF SPECIFIED PLANT MATERIAL IS NOT OBTAINABLE, SUBMIT PROOF OF NON AVAILABILITY TO THE LANDSCAPE ARCHITECT, TOGETHER WITH PROPOSAL FOR USE OF EQUIVALENT MATERIAL.
- PROVIDE AND INSTALL ALL PLANTS AS IN ACCORDANCE WITH DETAILS AND CONTRACT SPECIFICATIONS.
- SOIL TESTS SHALL BE PERFORMED TO DETERMINE SOIL CHARACTER AND QUALITY. NECESSARY SOIL AMENDMENTS SHALL BE PERFORMED PER TEST RESULTS TO ENSURE PLANT HEALTH.

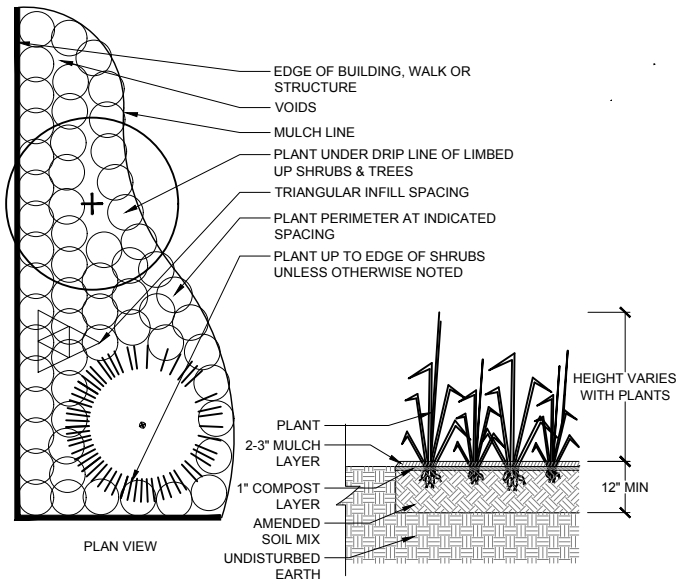
CONSTRUCTION/INSTALLATION

- LANDSCAPE ARCHITECT RESERVES THE RIGHT TO REJECT ANY PLANTS AND MATERIALS THAT ARE IN AN UNHEALTHY OR UNSIGHTLY CONDITION, AS WELL AS PLANTS AND MATERIALS THAT DO NOT CONFORM TO ANSI Z60.1 "AMERICAN STANDARD FOR NURSERY STOCK"
- LABEL AT LEAST ONE TREE AND ONE SHRUB OF EACH VARIETY AND CALIPER WITH A SECURELY ATTACHED, WATERPROOF TAG BEARING THE DESIGNATION OF BOTANICAL AND COMMON NAME.
- INSTALL LANDSCAPE PLANTINGS AT ENTRANCES/EXITS AND PARKING AREAS ACCORDING TO PLANS SO THAT MATERIALS WILL NOT INTERFERE WITH SIGHT DISTANCES.
- CONTRACTOR IS RESPONSIBLE FOR WATERING ALL PLANT MATERIAL DURING INSTALLATION AND UNTIL FINAL INSPECTION AND ACCEPTANCE BY OWNER. CONTRACTOR SHALL NOTIFY OWNER OF CONDITIONS WHICH AFFECTS THE GUARANTEE.

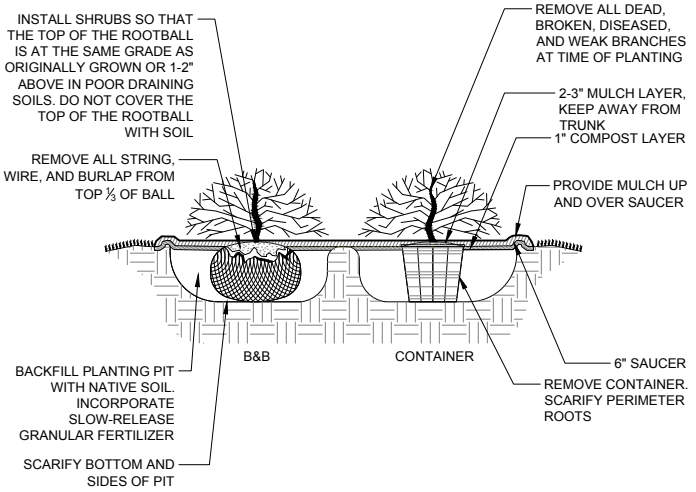
INSPECTIONS/GUARANTEE

- UPON COMPLETION OF LANDSCAPE INSTALLATION, THE LANDSCAPE CONTRACTOR SHALL NOTIFY THE GENERAL CONTRACTOR WHO WILL VERIFY COMPLETENESS, INCLUDING THE REPLACEMENT OF ALL DEAD PLANT MATERIAL. CONTRACTOR IS RESPONSIBLE FOR SCHEDULING A FINAL INSPECTION BY THE LANDSCAPE ARCHITECT.
- ALL EXTERIOR PLANT MATERIALS SHALL BE GUARANTEED FOR ONE FULL YEAR AFTER DATE OF FINAL INSPECTION AGAINST DEFECTS INCLUDING DEATH AND UNSATISFACTORY GROWTH. DEFECTS RESULTING FROM NEGLIGENCE BY THE OWNER, ABUSE OR DAMAGE BY OTHERS, OR UNUSUAL PHENOMENA OR INCIDENTS WHICH ARE BEYOND THE CONTRACTORS CONTROL ARE NOT THE RESPONSIBILITY OF THE CONTRACTOR.
- PLANT MATERIAL QUANTITIES AND SIZES WILL BE INSPECTED FOR COMPLIANCE WITH APPROVED PLANS BY A SITE PLAN REVIEW AGENT OF THE PLANNING DEPARTMENT PRIOR TO THE RELEASE OF THE CERTIFICATE OF OCCUPANCY.
- REMOVE ALL GUY WIRES AND STAKES 12 MONTHS AFTER INSTALLATION.

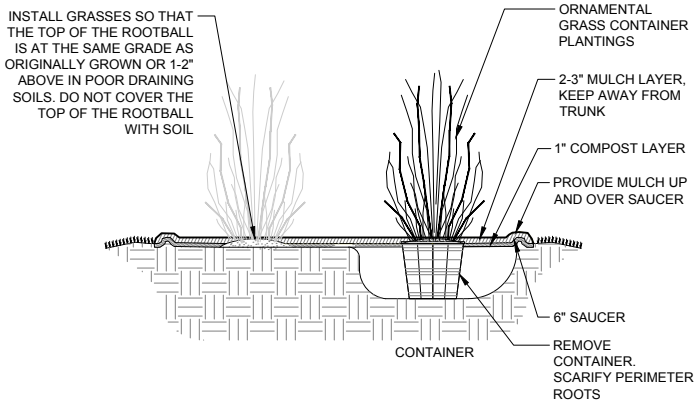
PLANT SCHEDULE						
SHRUBS	QTY	BOTANICAL NAME	COMMON NAME	MIN. INSTALLED SIZE	ROOT	SPACING
AST OSK	20	ASTER OBLONGIFOLIUS 'OCTOBER SKIES'	OCTOBER SKIES FALL ASTER	24" HT./SPRD.	CONTAINER	36" o.c.
COR FA4	6	CORNUS SERICEA 'FARROW'	ARCTIC FIRE® RED TWIG DOGWOOD	24" HT./SPRD.	CONTAINER	42" o.c.
ILE RED	24	ILEX VERTICILLATA 'RED SPRITE'	RED SPRITE WINTERBERRY	24" HT./SPRD.	CONTAINER	48" o.c.
ITE MER	34	ITEA VIRGINICA 'MERLOT'	MERLOT SWEETSPIRE	24" HT./SPRD.	CONTAINER	48" o.c.
ORNAMENTAL GRASSES	QTY	BOTANICAL NAME	COMMON NAME	MIN. INSTALLED SIZE	ROOT	SPACING
PEN HAM	38	PENNISETUM ALOPECUROIDES 'HAMELN'	HAMELN FOUNTAIN GRASS	24" HT./SPRD.	CONTAINER	48" o.c.
CAL KAR	21	CALAMAGROSTIS X ACUTIFLORA 'KARL FOERSTER'	KARL FOERSTER FEATHER REED GRASS	24" HT./SPRD.	CONTAINER	24" o.c.
STI MEX	234	STIPA TENUISSIMA	MEXICAN FEATHER GRASS	24" HT./SPRD.	CONTAINER	12" o.c.
PERENNIALS	QTY	BOTANICAL NAME	COMMON NAME	MIN. INSTALLED SIZE	ROOT	SPACING
LIA SPI	167	LIATRIS SPICATA	BLAZING STAR	1 GAL.	CONTAINER	12" o.c.
RUD GO2	138	RUDBECKIA FULGIDA SULLIVANTII 'GOLDSTURM'	GOLDSTURM CONEFLOWER	1 GAL.	CONTAINER	12" o.c.
SED AU5	81	SEDUM X 'AUTUMN FIRE'	AUTUMN FIRE SEDUM	1 GAL.	CONTAINER	18" o.c.



3 GROUNDCOVER PLANTING DETAIL  
NTS



1 SHRUB PLANTING DETAIL  
NTS



2 ORNAMENTAL GRASS DETAIL  
NTS

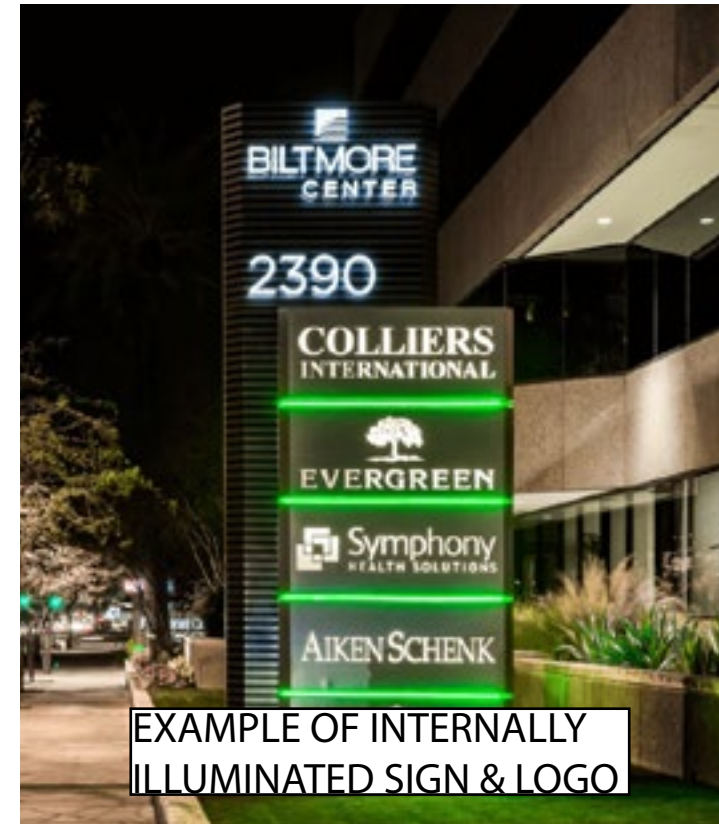
LANDSCAPE NOTES AND DETAILS



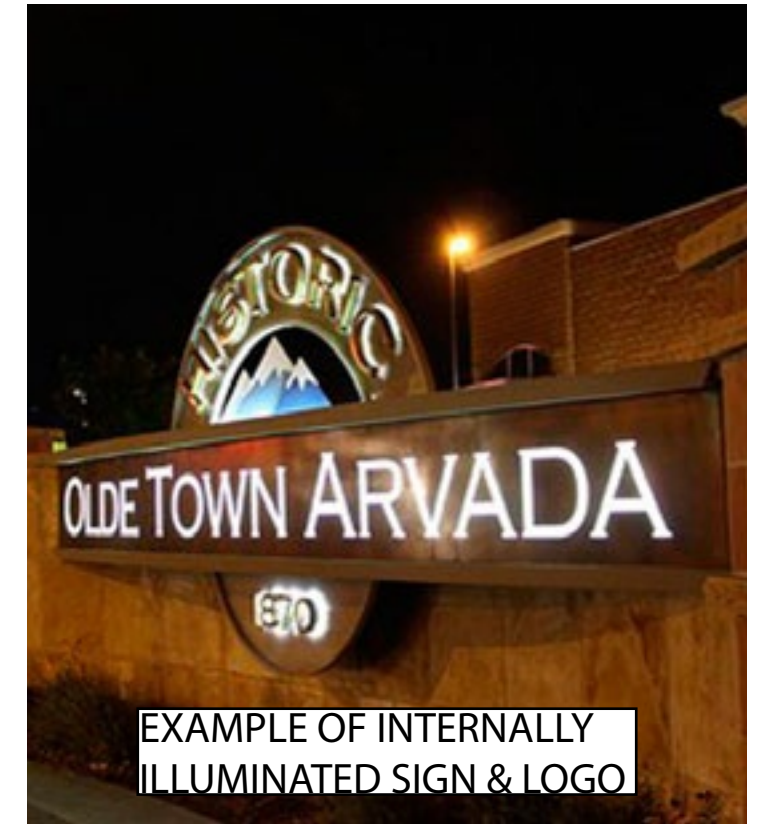




BEFORE



EXAMPLE OF INTERNALLY ILLUMINATED SIGN & LOGO



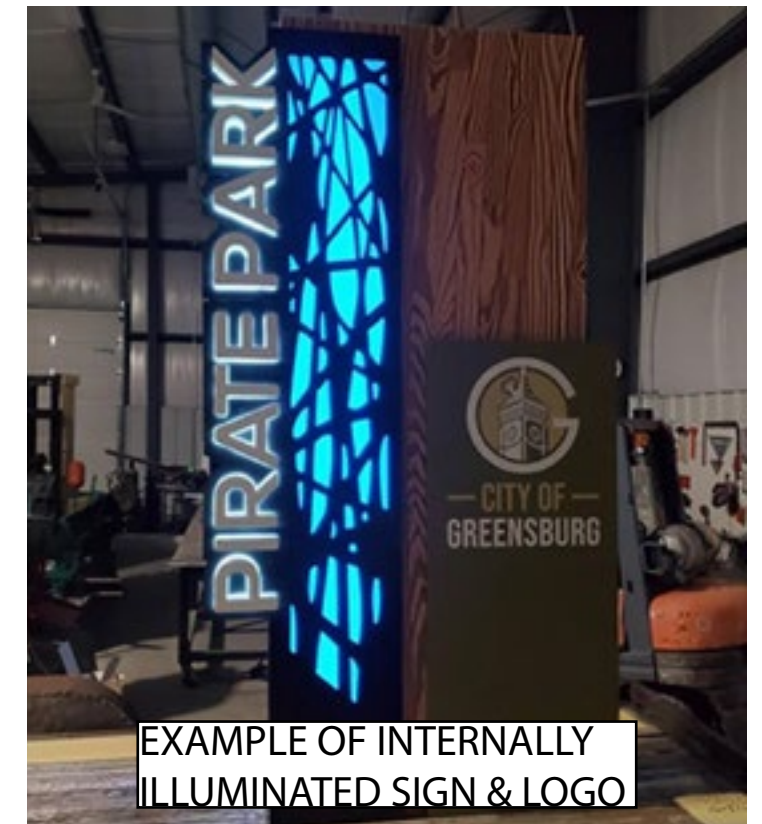
EXAMPLE OF INTERNALLY ILLUMINATED SIGN & LOGO



AFTER



EXAMPLE SIGN W/ DIMENSIONAL LETTERING & LOGO



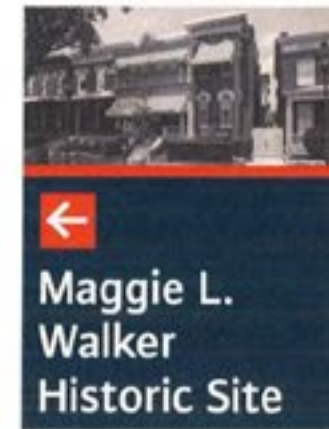
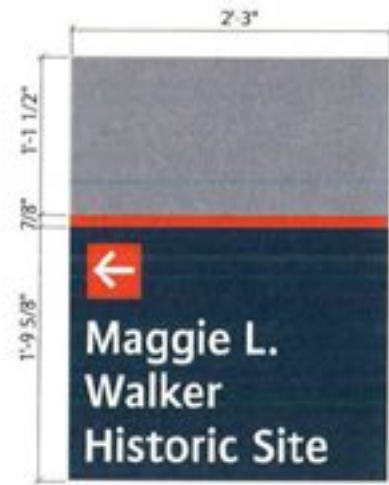
EXAMPLE OF INTERNALLY ILLUMINATED SIGN & LOGO

## PHOTOSIMULATION & PRECEDENT IMAGERY

Hull Street Gateway Sign | Urban Design Committee | Final Review | 9/14/23  
6500 Block of Hull Street Rd. Richmond, VA 23220





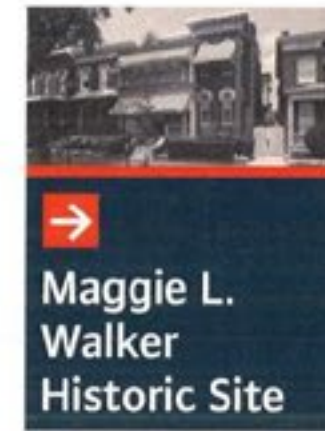


Front



Back

L.32 C6-A

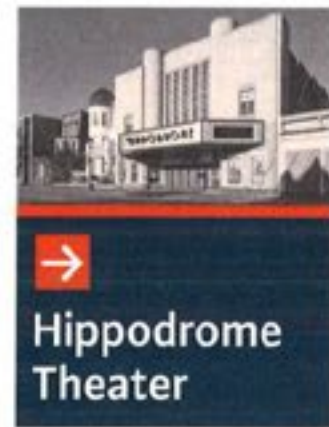


Front

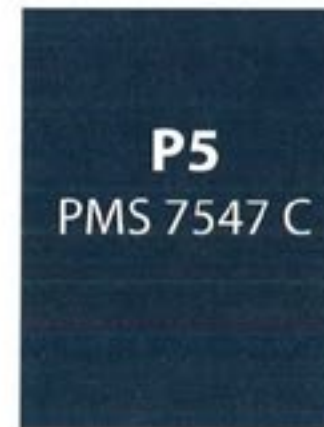


Back

L.24 C6-A

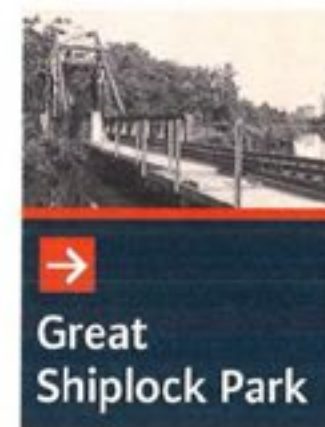


Front



Back

L.34 C6-A

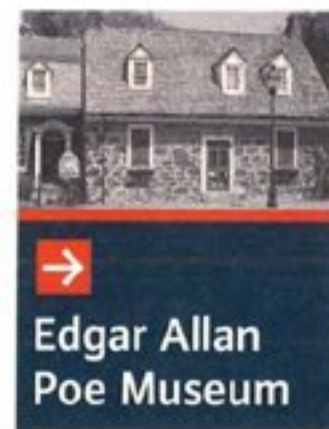


Front

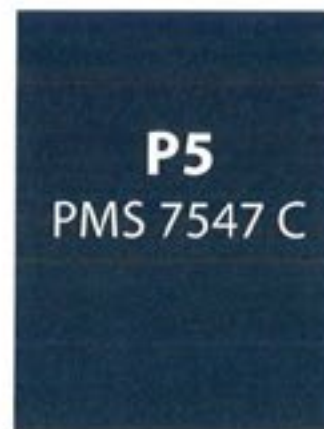


Back

L.102 C6-A



Front



Back

L.104 C6-A

#### CITY OF RICHMOND BRAND COLORS

PRIMARY COLORS	DEEP NAVY
	PANTONE: 426C
	CMYK C:80 M:74 Y:52 K:57
	RGB R:41 G:41 B:56
	HEX: #282938
PRIMARY COLORS	BLUE
	PANTONE: 7687C
	CMYK C:95 M:78 Y:27 K:12
	RGB R:38 G:70 B:119
	HEX: #264677
ACCENT COLORS	RED
	PANTONE: 7621C
	CMYK C:23 M:98 Y:92 K:16
	RGB R:170 G:36 B:42
	HEX: #AA242A
ACCENT COLORS	GRAY
	PANTONE: 425C
	CMYK C:0 M:0 Y:0 K:80
	RGB R:77 G:78 B:76
	HEX: #4D4E4C
ACCENT COLORS	LIGHT GRAY
	PANTONE: 427C
	CMYK C:0 M:0 Y:0 K:20
	RGB R:208 G:206 B:204
	HEX: #D0CECC

Date	: 08-28-14
Client	: CITY OF RICHMOND Downtown Designer supplied message schedule
Job Name	: CITY OF RICHMOND WAYFINDING SIGNAGE PROGRAM
Acct. Rep.	: SK/DB
Designer	: VIVEK
Drawing #	: 52961
Rev. #	:
Rev. Date	:
Scale	: N/S
Page #	: 13A

**color·ad**  
SIGNS AND EXHIBITS  
[www.color-ad.com](http://www.color-ad.com)

THIS DRAWING REMAINS THE EXCLUSIVE PROPERTY OF COLOR-AD, INC. THIS DESIGN CANNOT BE COPIED IN WHOLE OR IN PART, ALTERED, OR EXHIBITED IN ANY MANNER, WITHOUT THE WRITTEN CONSENT OF COLOR-AD, INC. THE EXCEPTION IS ANY PREVIOUSLY COPYRIGHTED ARTWORK SUPPLIED BY THE CLIENT.

UNLESS NOTED OTHERWISE, ALL COLORS PORTRAYED ARE REPRESENTATIVE ONLY.

## CITY OF RICHMOND SIGNAGE PROGRAM EXAMPLES

Hull Street Gateway Sign | Urban Design Committee | Final Review | 9/14/23  
6500 Block of Hull Street Rd. Richmond, VA 23220







**RED SPRITE WINTERBERRY**



**MEXICAN FEATHER GRASS**



**FEATHER REED GRASS**



**HAMELN FOUNTAIN GRASS**



**RED TWIG DOGWOOD**



**MERLOT SWEETSPIRE**



**OCTOBER SKIES FALL ASTER**



**GOLDSTRUM CONEFLOWER**



**BLAZING STAR**



**AUTUMN FIRE SEDUM**

## PLANT MATERIAL IMAGES

Hull Street Gateway Sign | Urban Design Committee | Final Review | 9/14/23  
6500 Block of Hull Street Rd. Richmond, VA 23220

