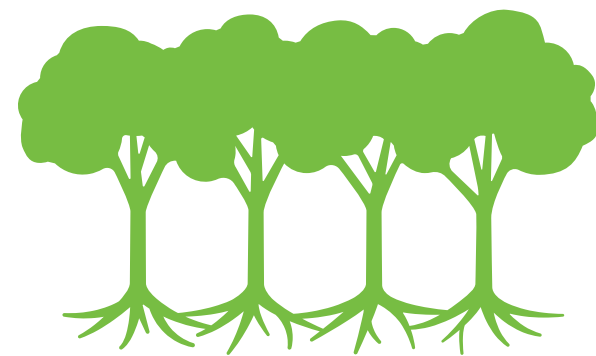


Hotchkiss Park – Capital Trees Green Space

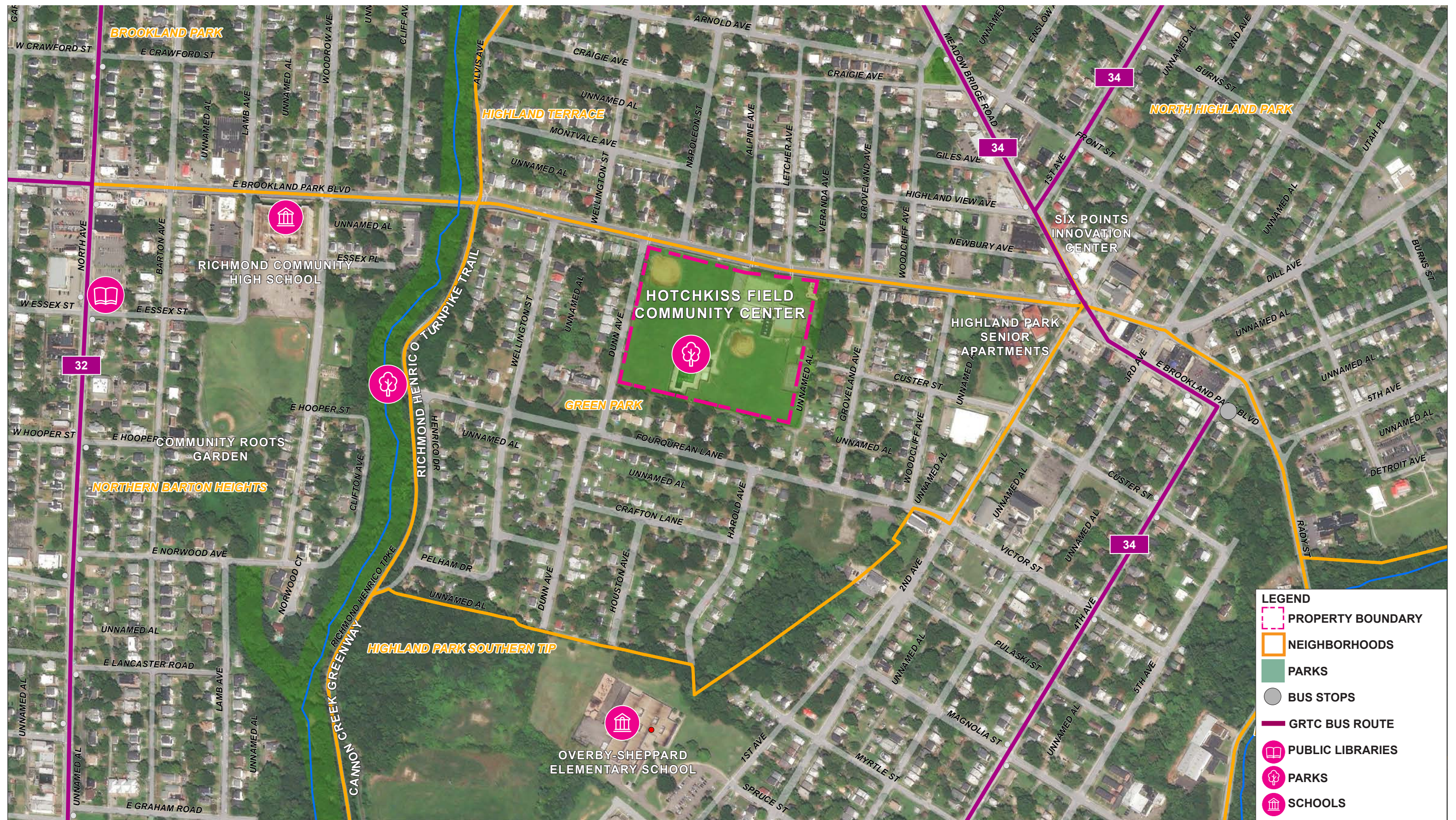
Urban Design Committee | Final Review

June 8, 2023



capital trees





NEIGHBORHOOD MAP

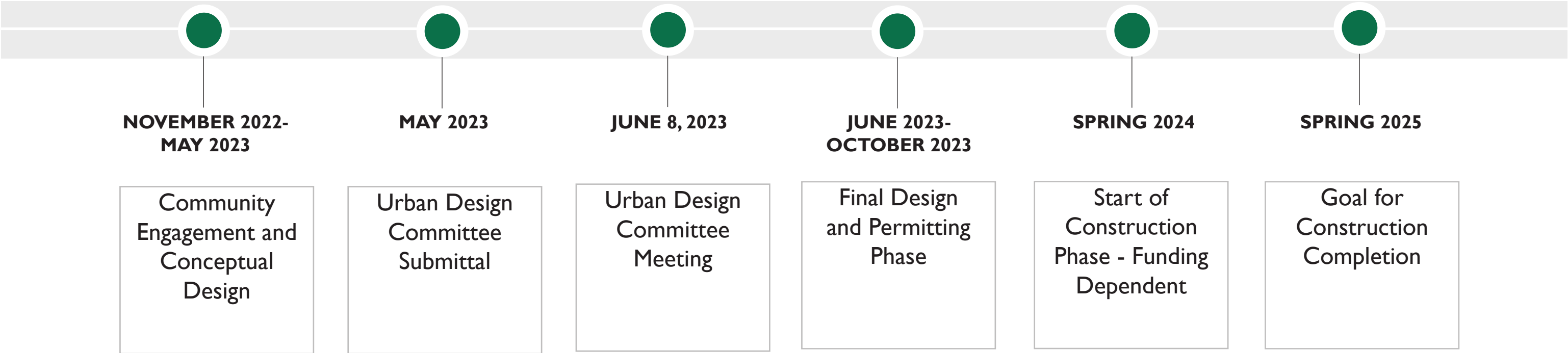


EXISTING CONDITIONS MAP



EXISTING SITE PHOTOS

PROJECT SCHEDULE



SCHEDULE NOTES:

- 1. The Department of Parks, Recreation, and Community Facilities worked with Timmons Group and the community in 202 to develop a vision for allocating future investment within the park. This was not a formal master plan process but has been referenced in this plan as part of the existing conditions document and some of this project builds upon work completed in that plan.
- 2. Construction schedule is dependent on the project receiving sufficient funds after the fund-raising campaign. The UDC will be updated and notified of any schedule variance if impacted by fund raising efforts.
- 3. The Public Art project consideration shown within this package is dependent upon available funding from the Public Arts Commission, a commitment to this project, and many other factors. This piece of the project would likely follow two to three years behind the construction part of this project based on information provided by the Public Arts Commission.

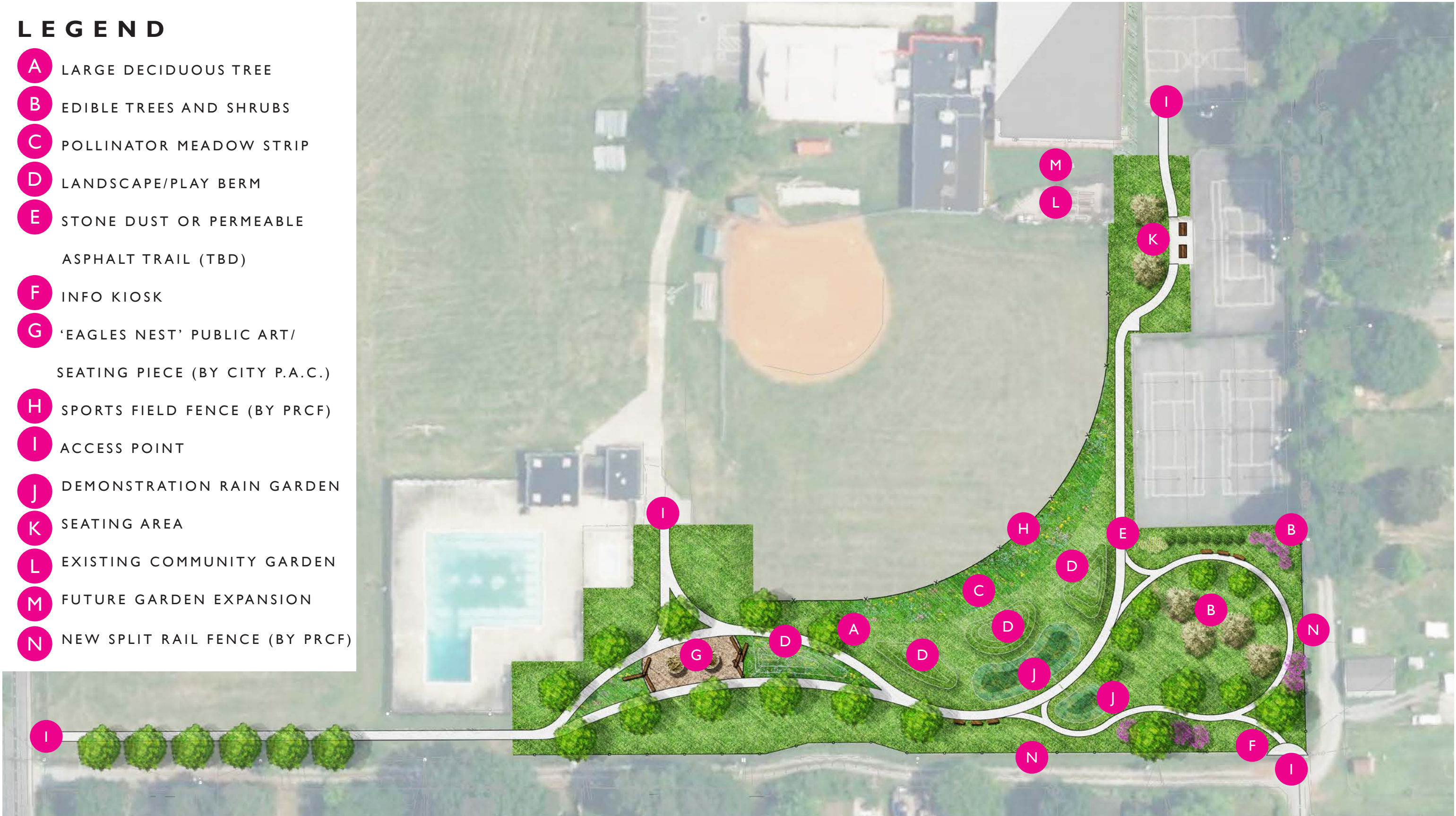
PROJECT TIMELINE



COMMUNITY ENGAGEMENT & OUTREACH

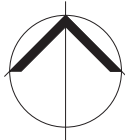
LEGEND

- A LARGE DECIDUOUS TREE
- B EDIBLE TREES AND SHRUBS
- C POLLINATOR MEADOW STRIP
- D LANDSCAPE/PLAY BERM
- E STONE DUST OR PERMEABLE ASPHALT TRAIL (TBD)
- F INFO KIOSK
- G 'EAGLES NEST' PUBLIC ART/ SEATING PIECE (BY CITY P.A.C.)
- H SPORTS FIELD FENCE (BY PRCF)
- I ACCESS POINT
- J DEMONSTRATION RAIN GARDEN
- K SEATING AREA
- L EXISTING COMMUNITY GARDEN
- M FUTURE GARDEN EXPANSION
- N NEW SPLIT RAIL FENCE (BY PRCF)



MASTER PLAN

Hotchkiss Park – Capital Trees Green Space | Urban Design Committee | Final Review | 6/08/23
701 E Brookland Park Blvd, Richmond, VA 23222



Capital Trees | Timmons Group | City of Richmond Parks and Recreation



TIMBER PUBLIC ART



PLAY BERM AND TIMBER SEATING

INSPIRATION IMAGERY



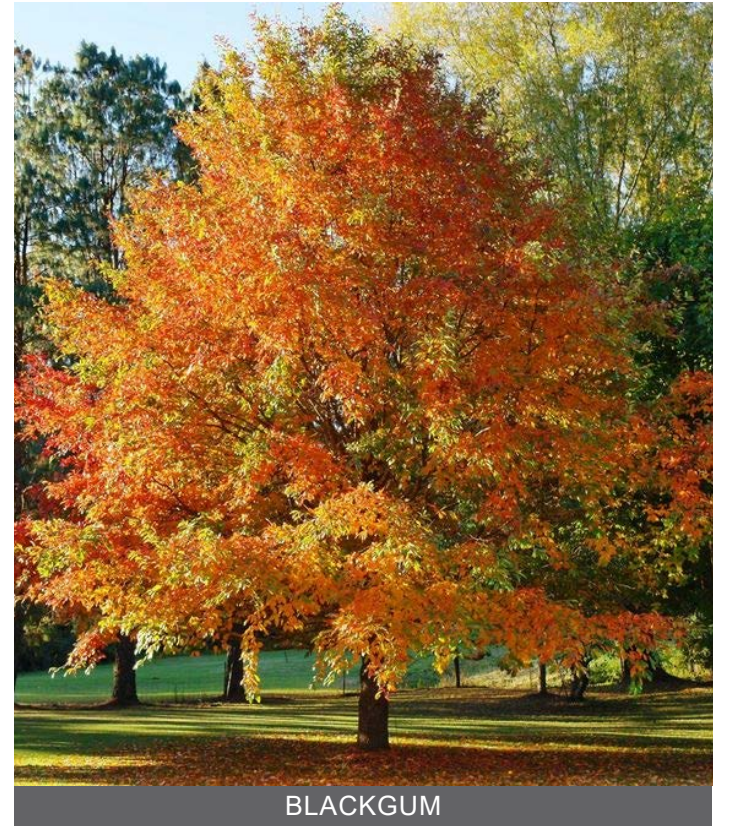
LONDON PLANE TREE



WILLOW OAK



AMERICAN HORNBEAM



BLACKGUM

LARGE DECIDUOUS TREES



HOPHORNBEAM



FRINGETREE



SWEETBAY MAGNOLIA



KOUSA DOGWOOD

FLOWERING TREES

PLANT MATERIALS



PRECEDENT IMAGE: SMALL SCALE FOOD FOREST BY PHILADELPHIA ORCHARD PROJECT

INSPIRATION IMAGERY



PAWPAW



AMERICAN PERSIMMON

FRUIT TREES



HIGHBUSH BLUEBERRY



NANKING CHERRY



AMERICAN HAZELNUT



PURPLE FIG

FRUIT AND NUT SHRUBS

PLANT MATERIALS – FOOD FOREST



PRECEDENT IMAGE: RAIN GARDEN



PRECEDENT IMAGE: RAIN GARDEN ADJACENT TO PATH

INSPIRATION IMAGERY



IRIS VERSICOLOR



JUNCUS EFFUSUS



DWARF JOE PYE WEED



TUSSOCK SEDGE



BLUE CARDINAL FLOWER

RAIN GARDEN PLANTS

PLANT MATERIALS – RAIN GARDEN



PRECEDENT IMAGE: MEADOW EDGE TO SPORTS FIELD



ERNST SEEDS HUMMINGBIRD AND BUTTERFLY MEADOW SEED MIX

INSPIRATION IMAGERY



BLACK EYED SUSAN



DWARF NEW ENGLAND ASTER



BUTTERFLY MILKWEED



LITTLE BLUESTEM



WRINKLELEAF GOLDENROD

PERENNIALS

PLANT MATERIALS – POLLINATOR MEADOW



OUTFIELD FENCE



SPLIT RAIL FENCE



FENCING



ENGINEERED WOOD FIBER MULCH



PERMEABLE ASPHALT



PAVING MATERIALS



BENCH



PICNIC TABLE



FURNISHINGS

SITE & PARK MATERIALS

LANDSCAPE NOTES:

ALL DISTURBED AREAS TO BE SEEDED WITH TURF UNLESS OTHERWISE NOTED.

FINAL PLANT SELECTIONS SUBJECT TO CHANGE BASED ON PLANT AVAILABILITY AND CAPITAL TREES' EXPERTISE. THE GENERAL QUANTITIES, TREE AND PLANTING BED LOCATIONS, AND CHARACTER WILL STRIVE TO REFLECT WHAT IS REPRESENTED IN THE UDC SUBMITTAL.

FINAL PLANT SELECTIONS SUBJECT TO CHANGE BASED ON PLANT AVAILABILITY AND CAPITAL TREES' EXPERTISE. THE GENERAL QUANTITIES, TREE AND PLANTING BED LOCATIONS, AND CHARACTER WILL STRIVE TO REFLECT WHAT IS REPRESENTED IN THE UDC SUBMITTAL.

PLANT KEY	
TREES	BOTANICAL NAME
ASI TRI	ASIMINA TRILOBA
CAR AME	CARPINUS CAROLINIANA
CHI VIR	CHIONANTHUS VIRGINICUS
COR KOU	CORNUS KOUSSA
DIO VIR	DIOSPYROS VIRGINIANA
MAG JIM	MAGNOLIA VIRGINIANA 'JIM WILSON'
NYS WIL	NYSSA SYLVATICA 'WILDFIRE'
OST VIR	OSTRYA VIRGINIANA
PLA BLO	PLATANUS X ACERIFOLIA 'BLOODGOOD'
QUE PHE	QUERCUS PHELLOS
SHRUBS	BOTANICAL NAME
COR AME	CORYLUS AMERICANA
FIC LS2	FICUS CARICA 'LSU PURPLE'
PRU TOM	PRUNUS TOMENTOSA
VAC ONE	VACCINIUM X 'O'NEAL'

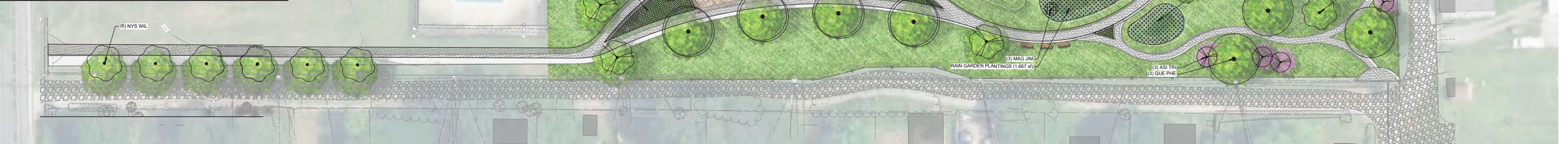
PLANT HATCH LEGEND	



PERENNIAL PLANT BEDS
 ASCLEPIAS TUBEROSA
 ASTER NOVAE-ANGLIAE
 ECHINACEA PURPUREA
 ERAGROSTIS SPECTABILIS
 PANICUM VIRGATUM 'CAPE BREEZE'
 PANICUM VIRGATUM 'SHENANDOAH'
 RUDBECKIA HIRTA
 SCHIZACHYRIUM SCOPARIUM 'STANDING OVATION'
 SOLIDAGO RUGOSA 'FIREWOKS'
 SPOROBOLUS HETEROLEPIS 'TARA'



RAIN GARDEN PLANTINGS
 ASCLEPIAS TUBEROSA
 CAREX STRICTA
 ECHINACEA PURPUREA
 EUTROCHIMUM PURPUREUM 'BABY JOE'
 IRIS VERSICOLOR
 JUNCUS EFFUSUS
 LOBELIA SIPHILITICA
 MONARDA FISTULOSA
 PANICUM VIRGATUM 'SHENANDOAH'
 SCHIZACHYRIUM SCOPARIUM 'STANDING OVATION'



Hotchkiss Park - Capital Trees Green Space | Urban Design Committee | Final Review | 6/08/23
701 E Brookland Park Blvd, Richmond, VA 23222

MAINTENANCE NOTES:

LANDSCAPE MAINTENANCE:

- ▶ LAWN AREAS TO BE MOWN AND MAINTAINED ACCORDING TO CITY OF RICHMOND STANDARD PRACTICES.
- ▶ MEADOW ESTABLISHMENT AND CARE – DURING THE INITIAL 3-YEAR MEADOW ESTABLISHMENT, HAND REMOVAL OF NOXIOUS WEEDS, WATERING DURING EXTREME DROUGHT, MOWING UP TO 3 TIMES PER YEAR, AND OTHER MINOR NEEDS. CAPITAL TREES WILL ADVISE PRCF STAFF AND THE COMMUNITY STEWARDS ON MEADOW ESTABLISHMENT CARE THROUGH UP TO FOUR ON SITE ENGAGEMENT OR EDUCATION EVENTS/YEAR DURING ESTABLISHMENT PERIOD. AFTER THE INITIAL 3-YEAR PERIOD, MAINTENANCE IS MOSTLY LIMITED TO MOWING 3 TIMES PER YEAR.
- ▶ EDIBLE LANDSCAPE AND FOOD FOREST – MAINTENANCE INVOLVES HAND WATERING DURING THE INITIAL YEAR LONG ESTABLISHMENT PERIOD. ANNUAL PRUNING AND HARVESTING OF FRUIT WILL BE THE RESPONSIBILITY OF CAPITAL TREES AND THE COMMUNITY STEWARDS. CAPITAL TREES WILL ADVISE PRCF STAFF AND THE COMMUNITY STEWARDS ON EDIBLE LANDSCAPE AND FOOD FOREST MAINTENANCE THROUGH UP TO FOUR ON SITE ENGAGEMENT OR EDUCATION EVENTS/YEAR DURING ESTABLISHMENT PERIOD.
- ▶ STORMWATER BIORETENTION AREA – MAINTENANCE INVOLVES WEEDING AND PRUNING ANNUALLY.
- ▶ NON-FRUITING SHRUBS AND TREES TO BE PRUNED FOR STRUCTURAL AND CLEARANCE REASONS ONLY; PLANTING BED AREAS TO BE TOP DRESSED ANNUALLY WITH DOUBLE SHREDDED HARDWOOD MULCH.
- ▶ ENGINEERED WOOD FIBER MULCH TO BE REGULARLY MAINTAINED, WEEDED, TILLED, AND TOP DRESSED WITH CERTIFIED PLAY MULCH.

HARDSCAPE MAINTENANCE:

- ▶ RECLAIMED TIMBER SEATING AND SITE FURNISHINGS TO BE INSPECTED AND REPAIRED/ REPLACED AS NEEDED.
- ▶ SIGNAGE TO BE CLEANED AND REPLACED AS NEEDED FOR MAINTENANCE AND LEGIBILITY.

- TURF LAWN MAINTENANCE (ROUTINE MOWING + WATER TO ESTABLISHMENT)
- PLANT BED MAINTENANCE (SEASONAL WEEDING, PRUNING MULCHING + WATERING FOR ESTABLISHMENT)
- BIORETENTION AREA (ENSURE BASIN IS CLEAR OF TRASH AND DEBRIS; REPLACE PLANTS AS NEEDED; SEASONAL WEEDING)
- FOOD FOREST AREA (ROUTINE MOWING, ANNUAL PRUNING AND HARVESTING)



MAINTENANCE PLAN