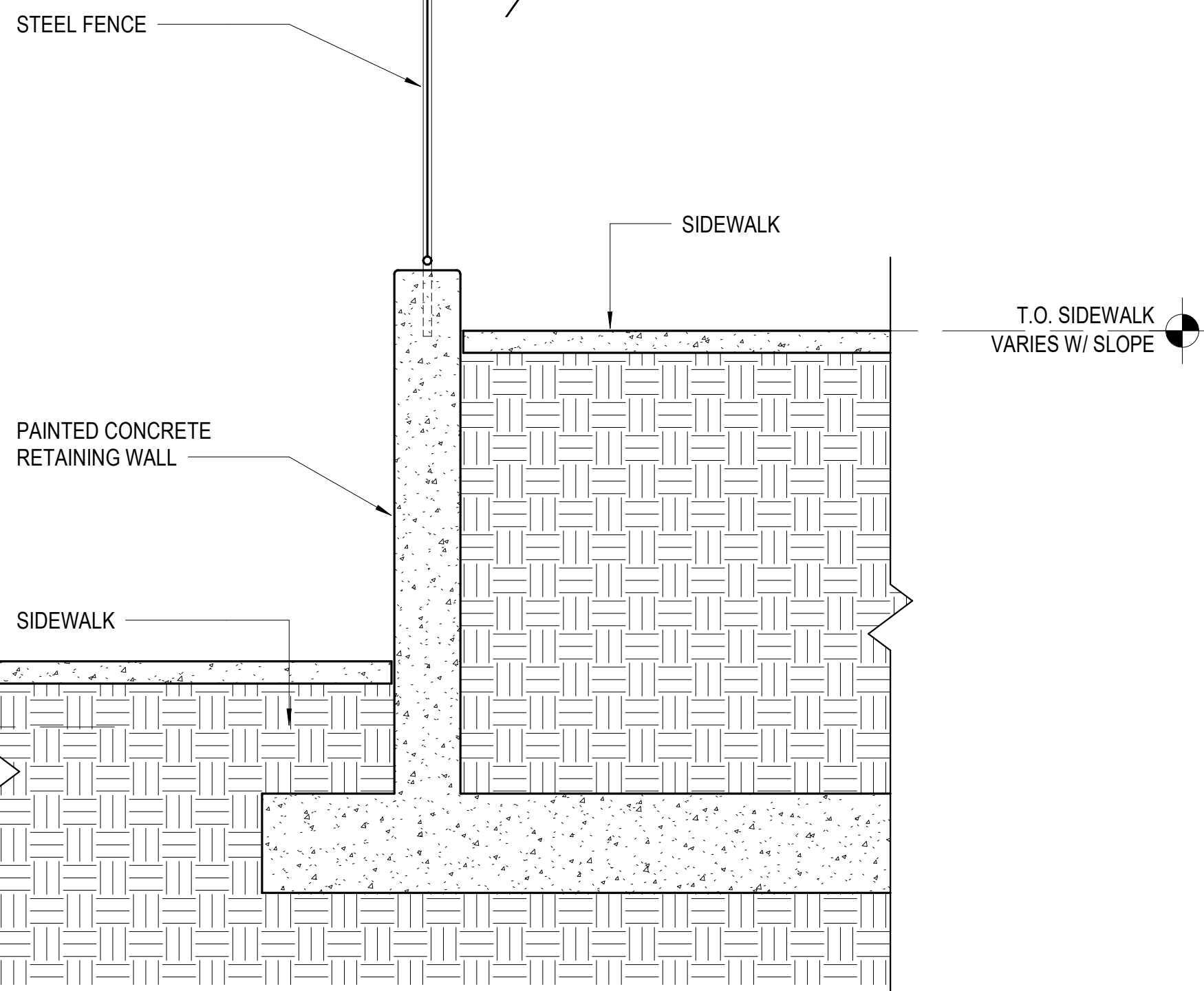
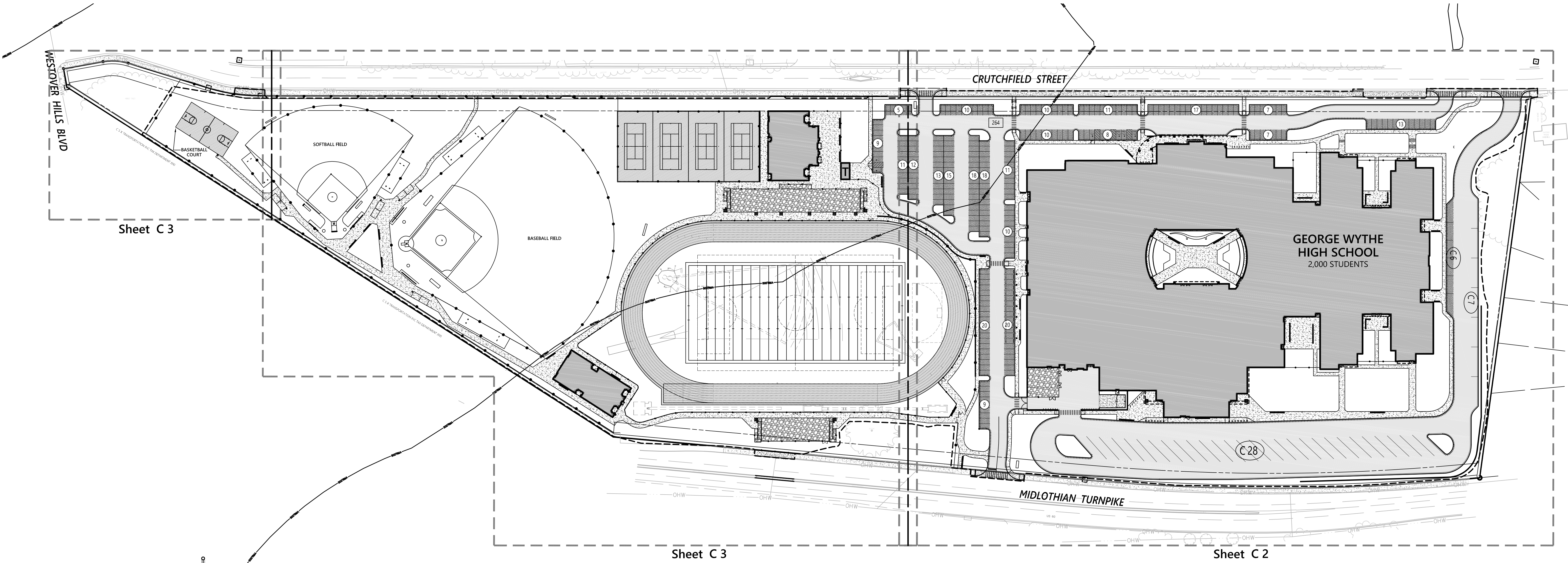


PARKING REQUIREMENT CALCULATION METHODS (WHICHEVER IS GREATER)

AUDITORIUM (1 PARKING SPACE PER 8 SEATS IN MAIN AUDITORIUM)  
• 1,429 AUDITORIUM SEAS DIVIDED BY 8 SEATS EQUAL 179 PARKING SPACES

CLASSROOMS (3 PARKING SPACES PER CLASSROOM)  
• 82 CLASSROOMS MULTIPLIED BY 3 PARKING SPACES EQUALS 246 PARKING SPACES  
• 8 FUTURE CLASSROOMS MULTIPLIED BY 3 PARKING SPACES EQUALS 24 PARKING SPACES  
• 90 CLASSROOMS TOTAL, INCLUDING FUTURE CLASSROOMS, MULTIPLIED BY 3 PARKING SPACES EQUALS 270 PARKING SPACES

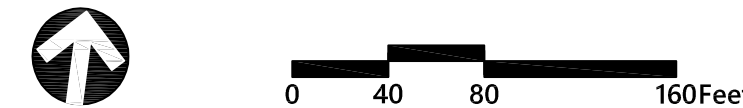
PARKING PROVIDED = 264 PARKING SPACES ON-SITE  
6 PARKING SPACES OFF-SITE ON CRUTCHFIELD STREET



RETAINING WALL SECTION  
SCALE: 1/2" = 1'-0"

Pavement Summary

- HEAVY DUTY ASPHALT
- LIGHT DUTY ASPHALT
- HEAVY DUTY CONCRETE
- PEDESTRIAN CONCRETE
- ASPHALT ATHLETIC SURFACE
- GRAVEL



DESCRIPTION	BY	MARK	DATE	REVISIONS

**vhb**  
vhb.com  
115 South 15th Street  
Suite 200  
Richmond, VA 23219  
804.343.7100

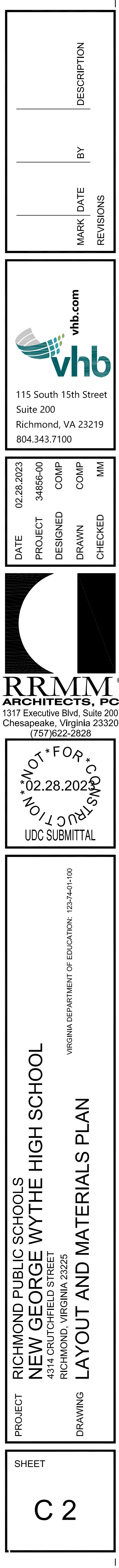
DATE	PROJECT	DESIGNED	COMP	COMP	MM
02.28.2023	34856-00				

**RRMM**  
ARCHITECTS, PC  
1317 Executive Blvd, Suite 200  
Chesapeake, Virginia 23320  
(757)622-2828

NOT FOR CONSTRUCTION  
02.28.2023  
UDC SUBMITTAL

RICHMOND PUBLIC SCHOOLS  
NEW GEORGE WYTHE HIGH SCHOOL  
4314 CRUTCHFIELD STREET  
RICHMOND, VIRGINIA 23225  
VIRGINIA DEPARTMENT OF EDUCATION: 123-74-01-100  
DRAWING  
OVERALL LAYOUT AND MATERIALS PLAN

SHEET  
C 1

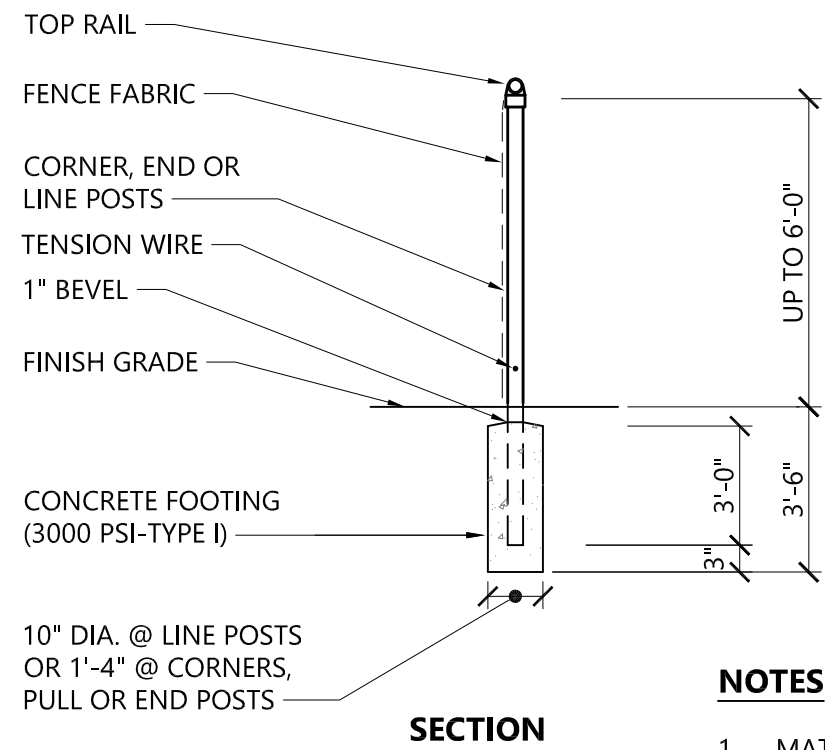
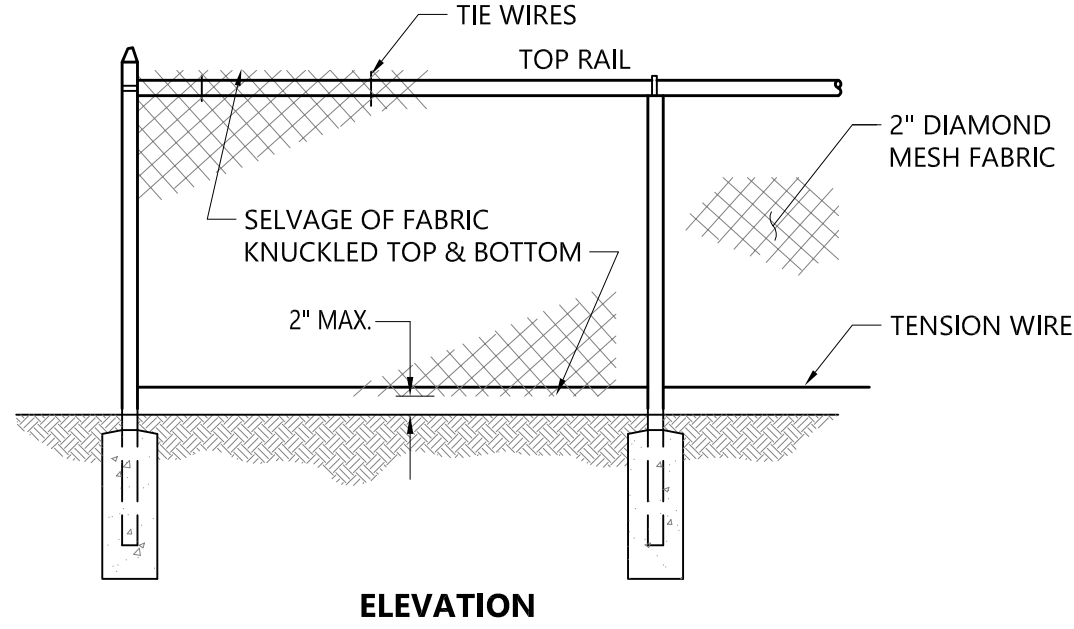


**NOTE**  
RETAINING WALLS TO BE  
CAST-IN-PLACE AND TO BE DESIGNED  
BY OTHERS. SEE ARCHITECT  
DRAWINGS FOR TREATMENT OF FACE  
OF RETAINING WALLS.



### Chain Link Fence up to 6'

N.T.S. Source: VHB REV 10/20 LD\_481

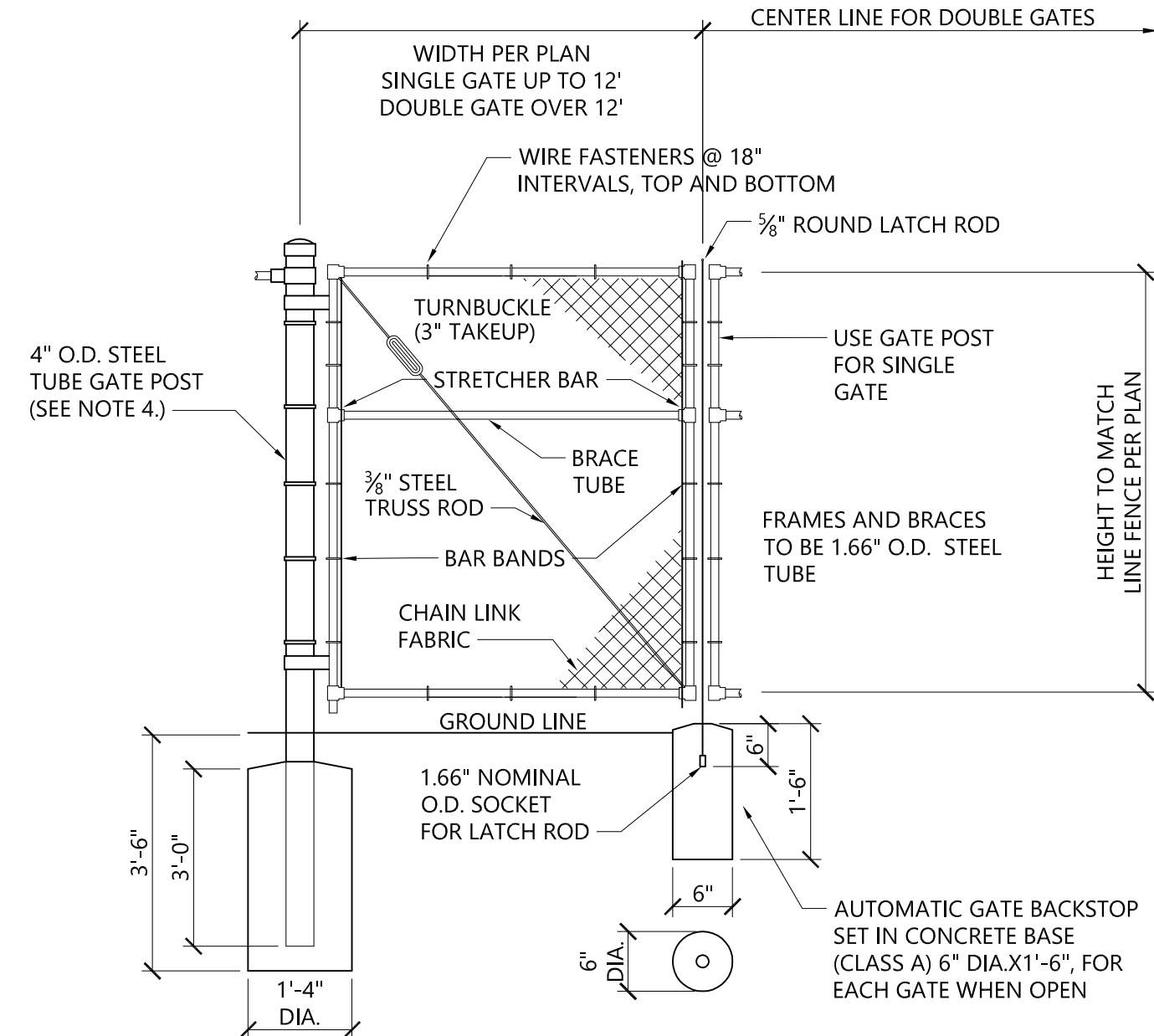


#### NOTES

1. MATERIALS TO BE SUPPLIED AND INSTALLED IN CONFORMANCE WITH "CHAIN LINK MANUFACTURER'S INSTITUTE" PRODUCT MANUAL.

### Chain Link Fence Gate

N.T.S. Source: VHB REV 12/19 LD\_482

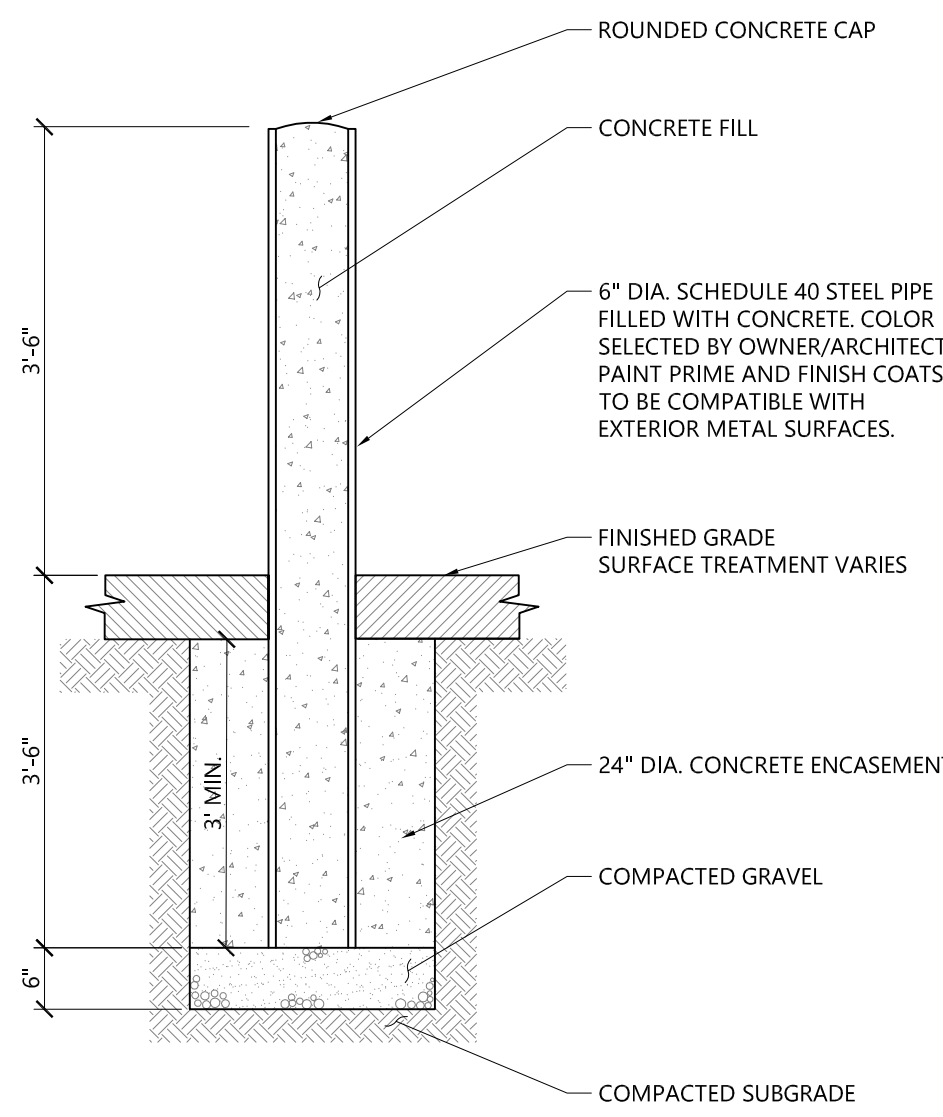


#### NOTES

1. CHAIN LINK FABRIC FOR GATES TO BE THE SAME AS REQUIRED FOR FENCE.
2. GATE POST BASE-PORTLAND CEMENT CONCRETE (3000 PSI).
3. FENCE FABRIC, POSTS, FRAMEWORKS, AND HARDWARE SHALL BE GALVANIZED STEEL PER SPECIFICATIONS.
4. GATE POSTS TO BE USED ON EACH SIDE OF SINGLE AND DOUBLE GATE OPENINGS.

### Bollard (Non-Decorative)

N.T.S. Source: VHB 9/17 LD\_700



#### NOTES:

1. DETAIL IS FOR NON-DECORATIVE BOLLARDS. SEE LANDSCAPE PLANS FOR DETAIL OF DECORATIVE BOLLARDS AT FRONT BUILDING ENTRANCE.

SHEET

C 4

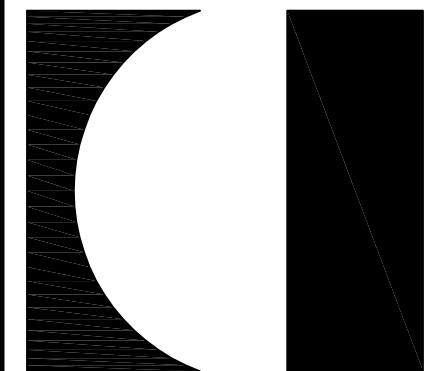
PROJECT RICHMOND PUBLIC SCHOOLS  
NEW GEORGE WYTHE HIGH SCHOOL  
4314 CRUTCHFIELD STREET  
RICHMOND, VIRGINIA 23225

VIRGINIA DEPARTMENT OF EDUCATION: 123-7401-100

SITE DETAILS

NOT FOR CONSTRUCTION  
02.16.2023  
UDC SUBMITTAL

**RRMM**  
ARCHITECTS, PC  
1317 Executive Blvd, Suite 200  
Chesapeake, Virginia 23320  
(757)622-2828



DATE	02.16.2023	PROJECT	34856-00	DESIGNED	COMP	DRAWN	COMP	CHECKED	MM

115 South 15th Street  
Suite 200  
Richmond, VA 23219  
804.343.7100

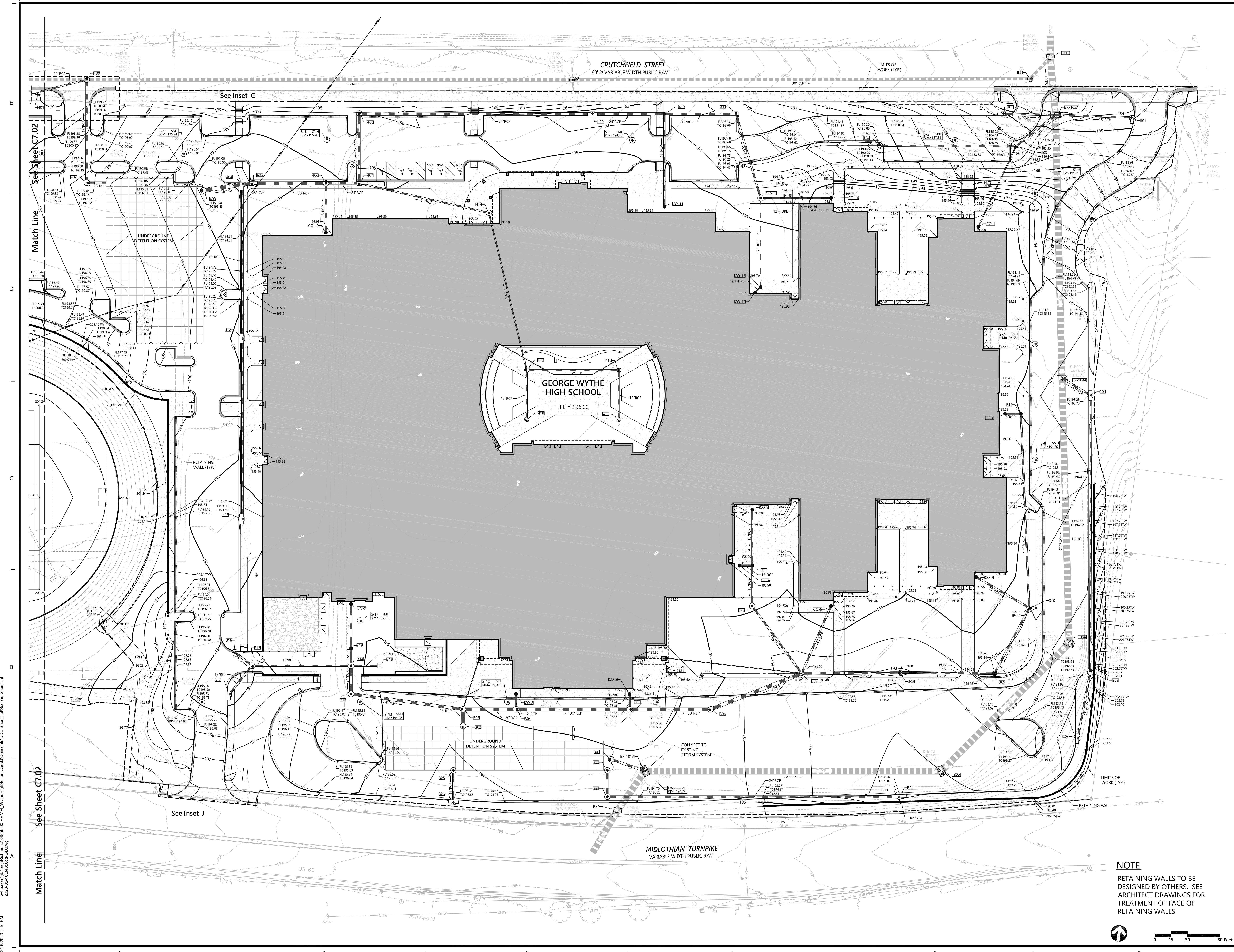


MARK DATE  
BY REVISIONS

DESCRIPTION

\\rhmm\projects\16\160465\160465-00\_RRMM\_WytheHighSchool\160465-00\_RRMM\_WytheHighSchool\UDC Submittal\Second Submittal  
2023.02.16 10:45:00 AM

2/15/2023 2:10 PM



NOTE

RETAINING WALLS TO BE DESIGNED BY OTHERS. SEE ARCHITECT DRAWINGS FOR TREATMENT OF FACE OF RETAINING WALLS



0 15 30 60 Feet

PROJECT RICHMOND PUBLIC SCHOOLS  
NEW GEORGE WYTHE HIGH SCHOOL  
4314 CRUTCHFIELD STREET  
RICHMOND, VIRGINIA 23225

DRAWING GRADING PLAN

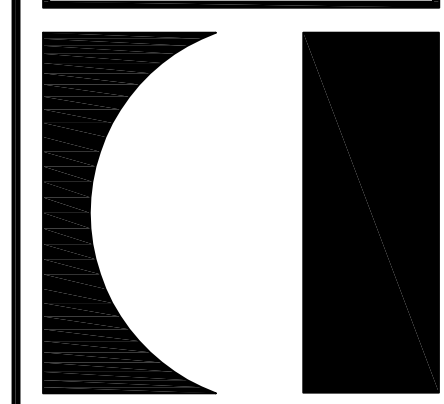
SHEET

C 5

VIRGINIA DEPARTMENT OF EDUCATION: 122-7401-100

NOT FOR CONSTRUCTION  
02.16.2023  
UDC SUBMITTAL

RRMM ARCHITECTS, PC  
1317 Executive Blvd, Suite 200  
Chesapeake, Virginia 23320  
(757) 622-2828



DATE 02.16.2023  
PROJECT 34856-00  
DESIGNED COMP  
DRAWN COMP  
CHECKED MM

115 South 15th Street  
Suite 200  
Richmond, VA 23219  
804.343.7100

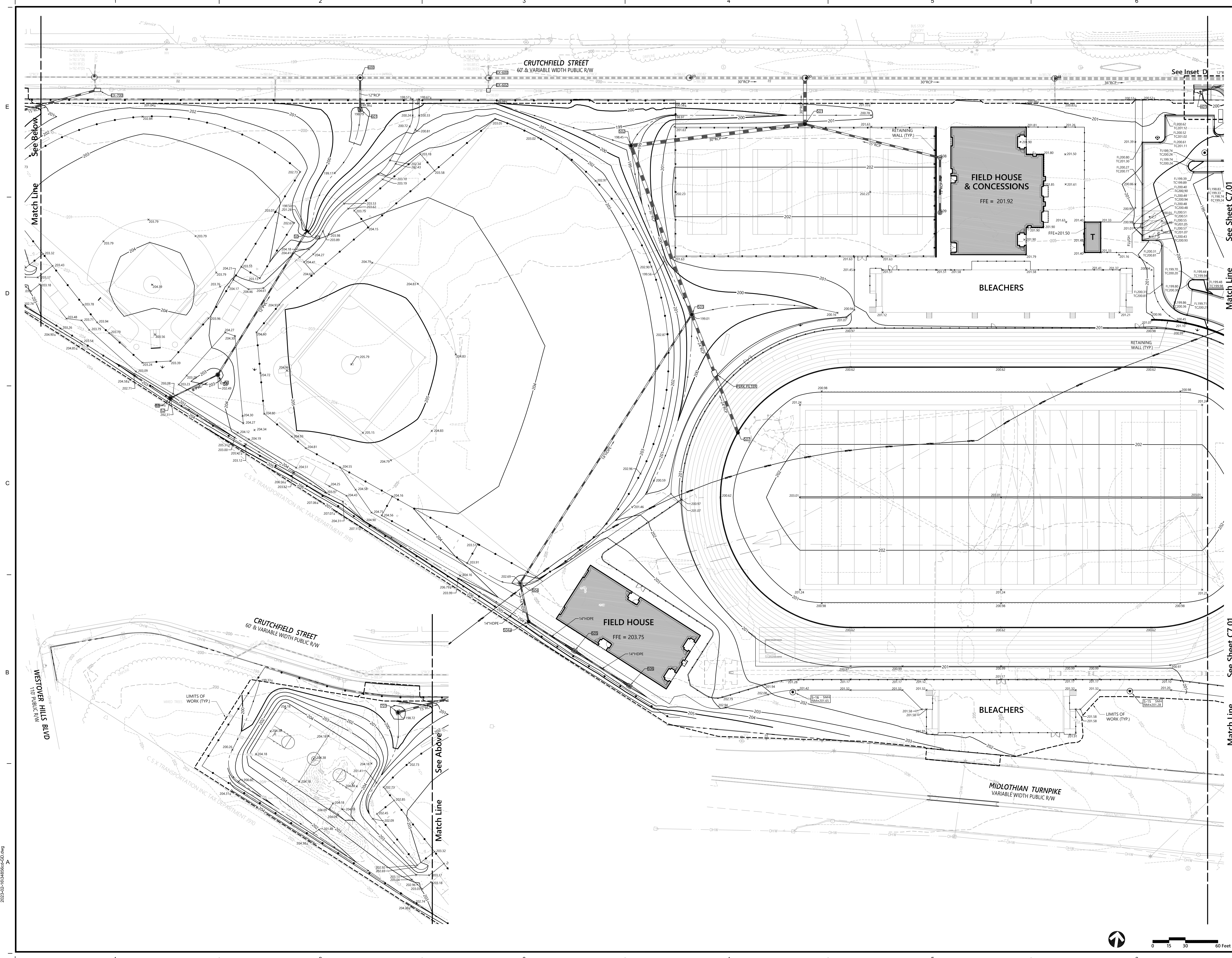


MARK DATE  
REVISIONS

DESCRIPTION  
BY

\\rhb\apps\jrh\proj\2023\02\16\GE\00\_RRMM\_WytheHighSchool\cd\Concepts\UDC Submittal\Second Submittal  
2023\02\16\GE\00\_RRMM\_WytheHighSchool\cd\Concepts\UDC Submittal\Second Submittal

2/15/2023 2:10 PM



PROJECT	RICHMOND PUBLIC SCHOOLS NEW GEORGE WYTHE HIGH SCHOOL 4314 CRUTCHFIELD STREET RICHMOND, VIRGINIA 23225			
	DRAWING			
SHEET	C 6			
	GRADING PLAN			
DATE	02.16.2023	PROJECT	34856-00	COMP
	02.16.2023	DESIGNED	COMP	MM
DATE	02.16.2023	DRAWN	CHECKED	MM
	02.16.2023	UDC SUBMITTAL		
RRMM ARCHITECTS, PC 1317 Executive Blvd, Suite 200 Chesapeake, Virginia 23320 (757) 622-2828				
VIRGINIA DEPARTMENT OF EDUCATION: 123-7401-100				
NOT FOR CONSTRUCTION				
UDC SUBMITTAL				
vvhb.com 115 South 15th Street Suite 200 Richmond, VA 23219 804.343.7100				
DESCRIPTION				
BY				
MARK DATE				
REVISIONS				