

GEORGE WYTHE HIGH SCHOOL

UDC SUBMITTAL

4314 CRUTCHFIELD STREET, RICHMOND, VA 23225

FEBRUARY 2023

PROJECT #: 21310-00

LEGEND

GENERAL

	TREE PROTECTION ZONE (TPZ)
	PHASE BOUNDARY
	SUBDIVISION BOUNDARY
	EXISTING UNDERGROUND GAS
	EXISTING OVERHEAD ELECTRIC
	EXISTING UNDERGROUND ELECTRIC
	EXISTING STORM SEWER
	PROPOSED STORM SEWER
	PROPOSED BURIED ELECTRIC
	PROPERTY LINE
	EXISTING CONTOUR
	PROPOSED CONTOUR
	PROPOSED SPOT ELEVATION
	PROPOSED STAIR NOSE

SEWER

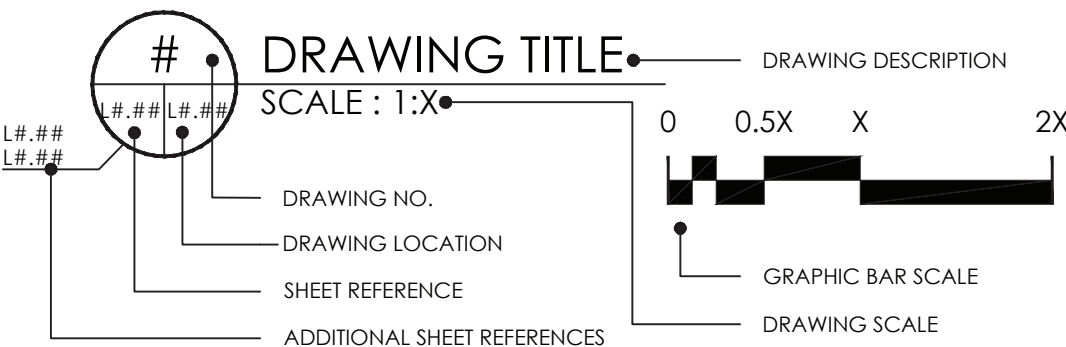
	EXISTING SANITARY SEWER
	PROPOSED SANITARY SEWER
	SAN - SEWER CONNECTIONS
	SEWER CLEANOUT

WATER

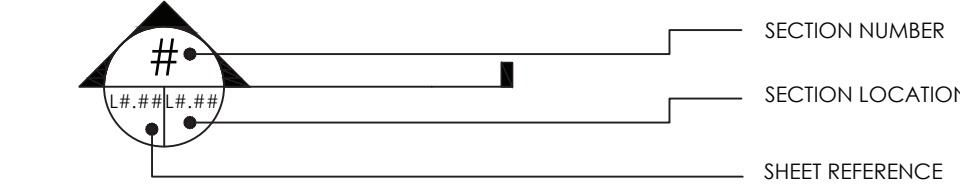
	EXISTING WATERLINE
	PROPOSED WATERLINE
	VALVE

SYMBOLS

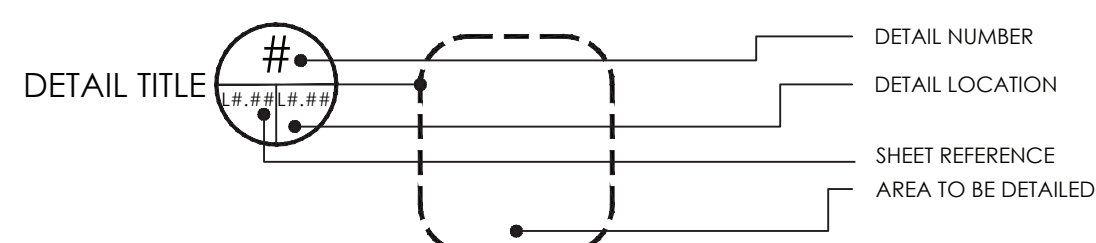
DRAWING TITLE



SECTION/ELEVATION



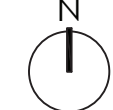
DETAIL KEY



MISC

	CENTERLINE
	PROPERTYLINE
	ANGLE
	PERPENDICULAR
	DIAMETER

NORTH ARROW



MATCHLINE



GENERAL NOTES

- IT IS THE RESPONSIBILITY OF THE GENERAL CONTRACTOR TO REVIEW THE SITE CONDITIONS AND INFORM THE LANDSCAPE ARCHITECT OF ANY DISCREPANCIES IN SITE CONDITIONS OR EXISTING GRADES THAT ARE NOT DESCRIBED ON THE PLANS BEFORE COMMENCING WORK.
- THE CONTRACTOR SHALL INSURE THAT ALL WORK MEETS ALL APPLICABLE LOCAL AND NATIONAL BUILDING AND SAFETY CODES THAT PERTAIN TO THE PROJECT WORK. IF THERE IS A DISCREPANCY BETWEEN A CODE AND THE CONTENT OF THE PLANS, THE CONTRACTOR IS TO CONSULT LANDSCAPE ARCHITECT BEFORE PROCEEDING.
- SHOULD THERE BE ANY DISCREPANCIES BETWEEN LANDSCAPE ARCHITECTURAL, ARCHITECTURAL, OR ENGINEERING DRAWINGS, THE CONTRACTOR IS TO CONTACT LANDSCAPE ARCHITECT TO REVIEW AND COORDINATE BEFORE PROCEEDING WITH WORK.
- CONTRACTOR SHALL VERIFY LOCATION & DEPTHS OF SITE UTILITIES PRIOR TO START OF CONSTRUCTION ACTIVITIES AND IMMEDIATELY NOTIFY THE LANDSCAPE ARCHITECT IF CONFLICTS OCCUR BETWEEN UTILITIES AND PROPOSED ELEMENTS. CONTRACTOR SHALL COORDINATE ALL NECESSARY UTILITY LOCATIONS WITH THE SERVICE PROVIDER IN CONSULTATION WITH THE LANDSCAPE ARCHITECT.
- EXISTING UTILITY LOCATIONS SHOWN ARE APPROXIMATE.
- TRENCHING FOR UTILITIES WILL BE PERMITTED IN APPROVED LOCATIONS ONLY. CONTRACTOR MUST ALERT LANDSCAPE ARCHITECT PRIOR TO TRENCHING FOR LOCATION REVIEW AND APPROVAL.
- CONTRACTOR SHALL BE RESPONSIBLE FOR ANY AND ALL DAMAGE TO SITE FEATURES TO REMAIN RESULTING FROM CONSTRUCTION ACTIVITIES IN THE AMOUNT OF COST TO REPAIR OR REPLACEMENT.
- PRIOR TO PROJECT COMPLETION, THE SITE IS TO BE THOROUGHLY CLEANED OF ALL CONSTRUCTION DEBRIS, SIGNS ETC., AND REVIEWED BY LANDSCAPE ARCHITECT AND OTHER RELEVANT CONSULTANTS.
- CONTRACTORS MUST CLEAN UP ALL TRASH AND DEBRIS ON THE CONSTRUCTION SITE AT THE END OF EACH DAY. LIGHTWEIGHT MATERIAL, PACKAGING, AND OTHER ITEMS MUST BE COVERED OR WEIGHTED DOWN TO PREVENT WIND FROM BLOWING SUCH MATERIALS OFF OF THE CONSTRUCTION SITE. CONTRACTORS ARE PROHIBITED FROM DUMPING, BURYING, OR BURNING TRASH ANYWHERE ON THE SITE. DURING THE CONSTRUCTION PERIOD, THE CONSTRUCTION SITE MUST BE KEPT NEAT AND TIDY TO PREVENT IT FROM BECOMING AN EYESORE FOR SURROUNDING PROPERTY OWNERS. DIRT, MUD, OR OTHER DEBRIS RESULTING FROM ACTIVITY ON SITE MUST BE PROMPTLY REMOVED FROM SURROUNDING ROADS.

LAYOUT NOTES

- CONTRACTOR SHALL VERIFY ALL EXISTING CONDITIONS AND LAYOUT DIMENSIONS IN THE FIELD. DO NOT SCALE DRAWINGS. REPORT DISCREPANCIES TO THE LANDSCAPE ARCHITECT BEFORE STARTING CONSTRUCTION.
- ALL ANGLES ARE ASSUMED TO BE 90 DEGREES UNLESS OTHERWISE NOTED.
- ALL DIMENSIONS FROM STRUCTURES ARE FROM FACE OF FINISH OF EXTERIOR WALL.
- ANY ALTERATIONS TO THESE DRAWINGS PROPOSED IN THE FIELD FOR CONSTRUCTION SHALL BE PROMPTLY REPORTED TO THE LANDSCAPE ARCHITECT FOR APPROVAL PRIOR TO CONSTRUCTION.

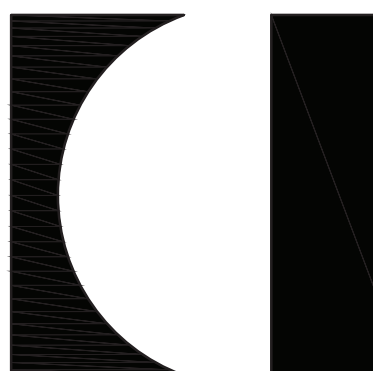
LANDSCAPE SHEET LIST

SHEET NUMBER	SHEET TITLE
L0.01	LANDSCAPE GENERAL NOTES
L1.00	OVERALL SITE PLAN
L1.01	PLANTING PLAN (QUADRANT #1)
L1.02	PLANTING PLAN (QUADRANT #2)
L1.03	PLANTING PLAN (QUADRANT #3)
L1.04	PLANTING PLAN (QUADRANT #4)
L1.05	ATHLETIC FIELD PLANTING PLAN
L1.06	INTERIOR COURTYARD LAYOUT AND PLANTING PLAN
L3.01	PLANTING NOTES AND DETAILS
L3.02	PLANTING NOTES AND DETAILS
L4.01	SITE DETAILS

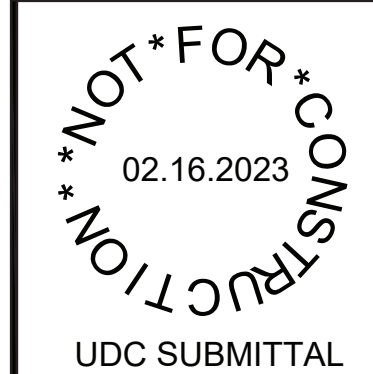
DESCRIPTION
BY
DATE
REVISIONS

waterstreetstudio
landscape architecture • civil engineering
4314 Crutchfield Street, Suite 202
Richmond, Virginia 23219

DATE	02.16.2023
PROJECT	21310-00
DESIGNED	SP, JR
DRAWN	SP, JR
CHECKED	JN



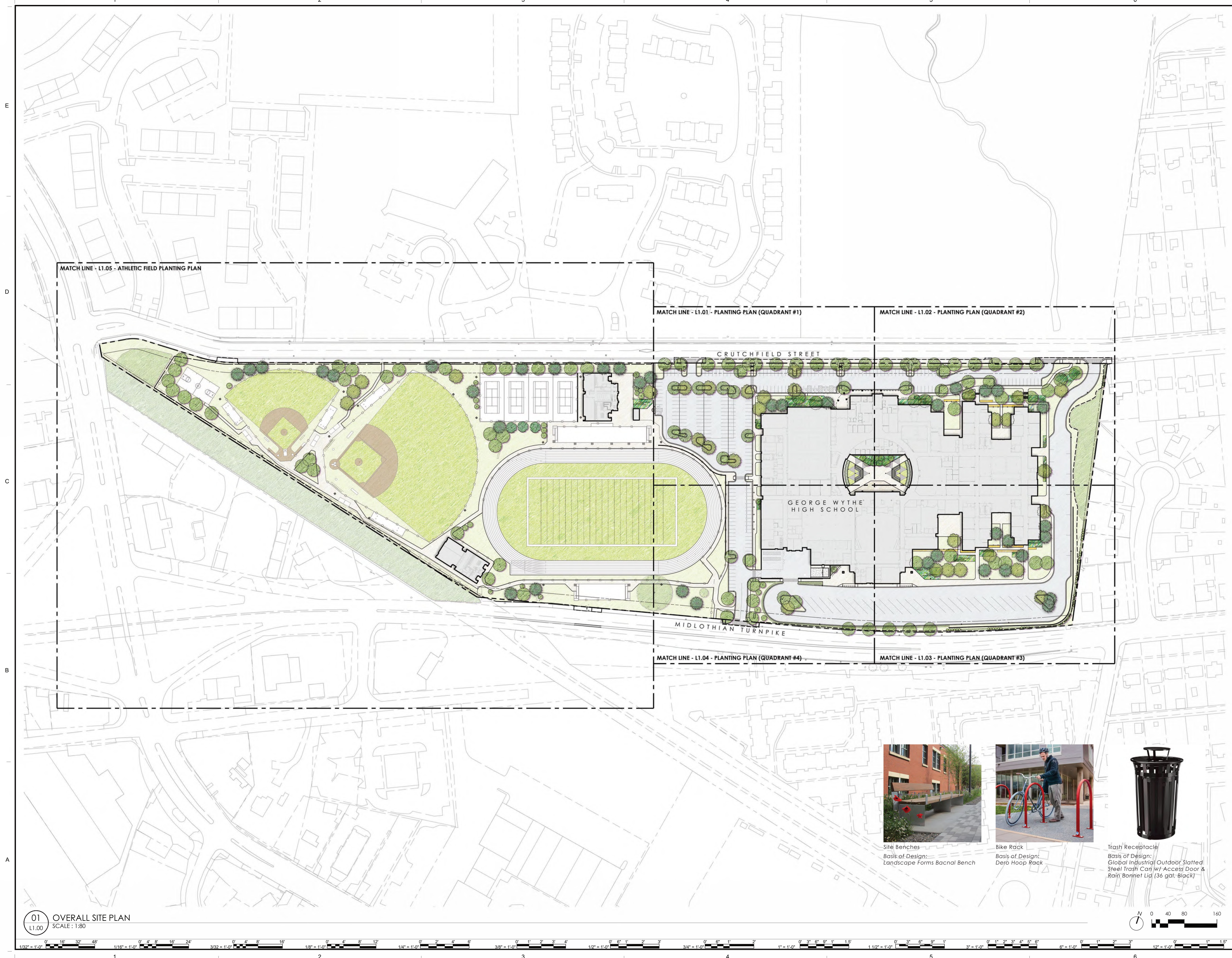
RRMM[®]
ARCHITECTS, PC
115 South 15th Street, Suite 202
Richmond, Virginia 23219
(804)277-8987



PROJECT	RICHMOND PUBLIC SCHOOLS GEORGE WYTHE HIGH SCHOOL 4314 CRUTCHFIELD STREET RICHMOND, VIRGINIA 23225
DRAWING	LANDSCAPE GENERAL NOTES

SHEET
L0.01

8/10/2022 4:43:23 PM Autodesk Docs/21310-00 George Wythe High School/21310-00 23 George Wythe High School - ARCH.rvt



01 OVERALL SITE PLAN
L1.00 SCALE: 1:80



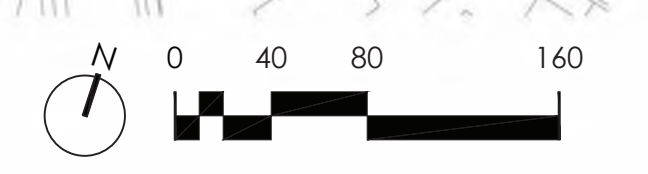
Site Benches
Basis of Design:
Landscape Forms Bacnal Bench



Bike Rack
Basis of Design:
Dero Hoop Rack



Trash Receptacle
Basis of Design:
Global Industrial Outdoor Slatted
Steel Trash Can w/ Access Door &
Rain Bonnet Lid (36 gal, Black)



DESCRIPTION	
BY	REVISIONS
waterstreetstudio landscape architecture • civil engineering 414 North 15th Street, Suite 202 Richmond, Virginia 23219 (804)277-8987	
DATE	02.16.2023
PROJECT	21310-00
DESIGNED	SP, JR
DRAWN	SP, JR
CHECKED	JN

RRMM[®]
ARCHITECTS, PC
115 South 15th Street, Suite 202
Richmond, Virginia 23219
(804)277-8987

RICHMOND PUBLIC SCHOOLS
GEORGE WYTHE HIGH SCHOOL
4314 CRUTCHFIELD STREET
RICHMOND, VIRGINIA 23225

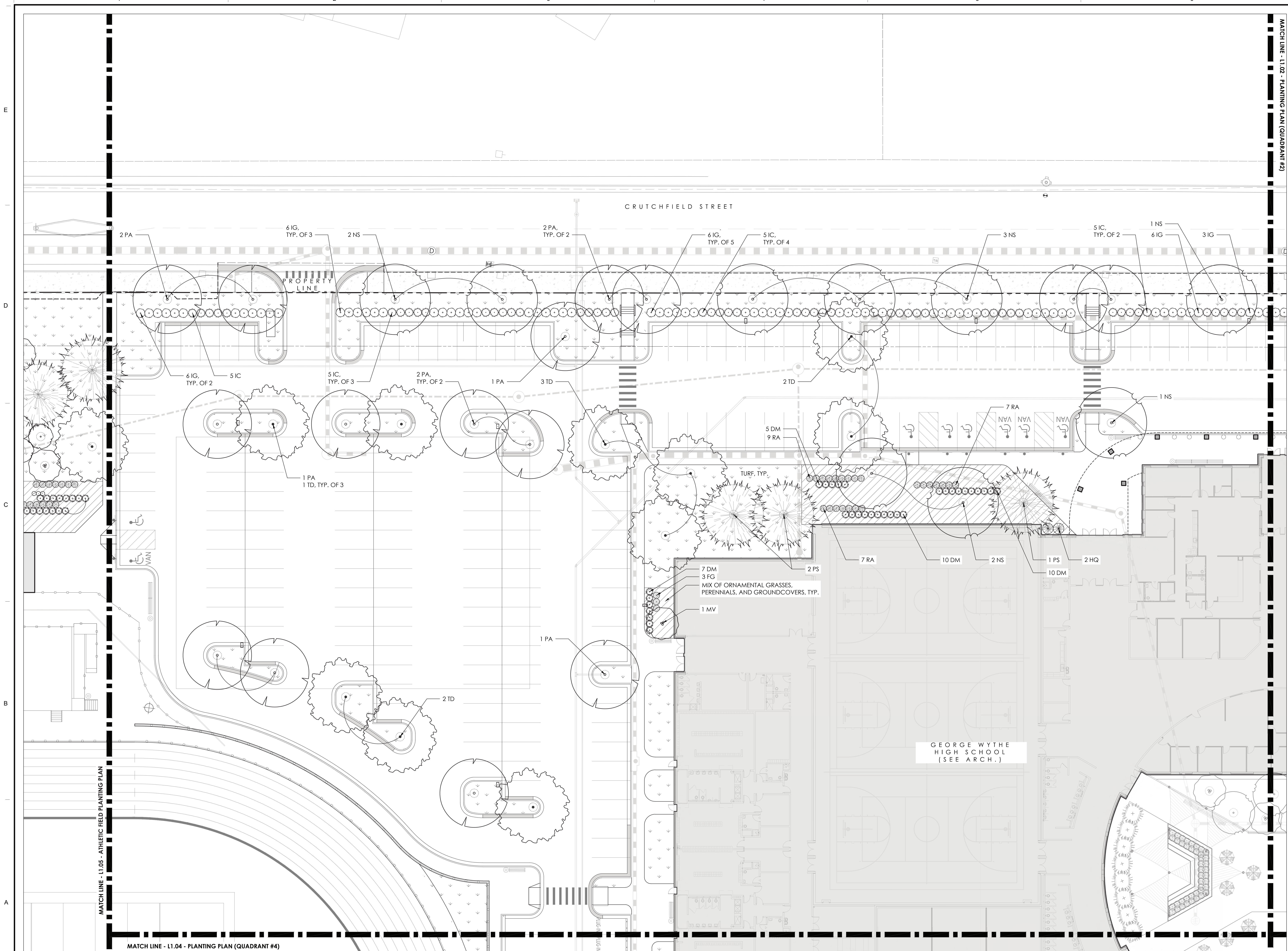
DRAWING OVERALL SITE PLAN

SHEET

L1.00

A:\02022\4-23-23 PM Autodesk Docs\2\1310-00 George Wythe High School\21310-00 023 George Wythe High School - ARCH\1.rvt

8/10/2022 4:43:23 PM



01 PLANTING PLAN (QUADRANT #1)
SCALE: 1:16

MATCH LINE - L1.02 - PLANTING PLAN (QUADRANT #3)

MARK	DATE	BY	DESCRIPTION

waterstreetstudio
landscape architecture • civil engineering
414 North Main Street, Suite 202
Richmond, Virginia 23219
(804) 277-8987

DATE	02.16.2023
PROJECT	21310-00
DESIGNED	SP, JR
DRAWN	SP, JR
CHECKED	JN

RRMM
ARCHITECTS, PC
115 South 15th Street, Suite 202
Richmond, Virginia 23219
(804) 277-8987

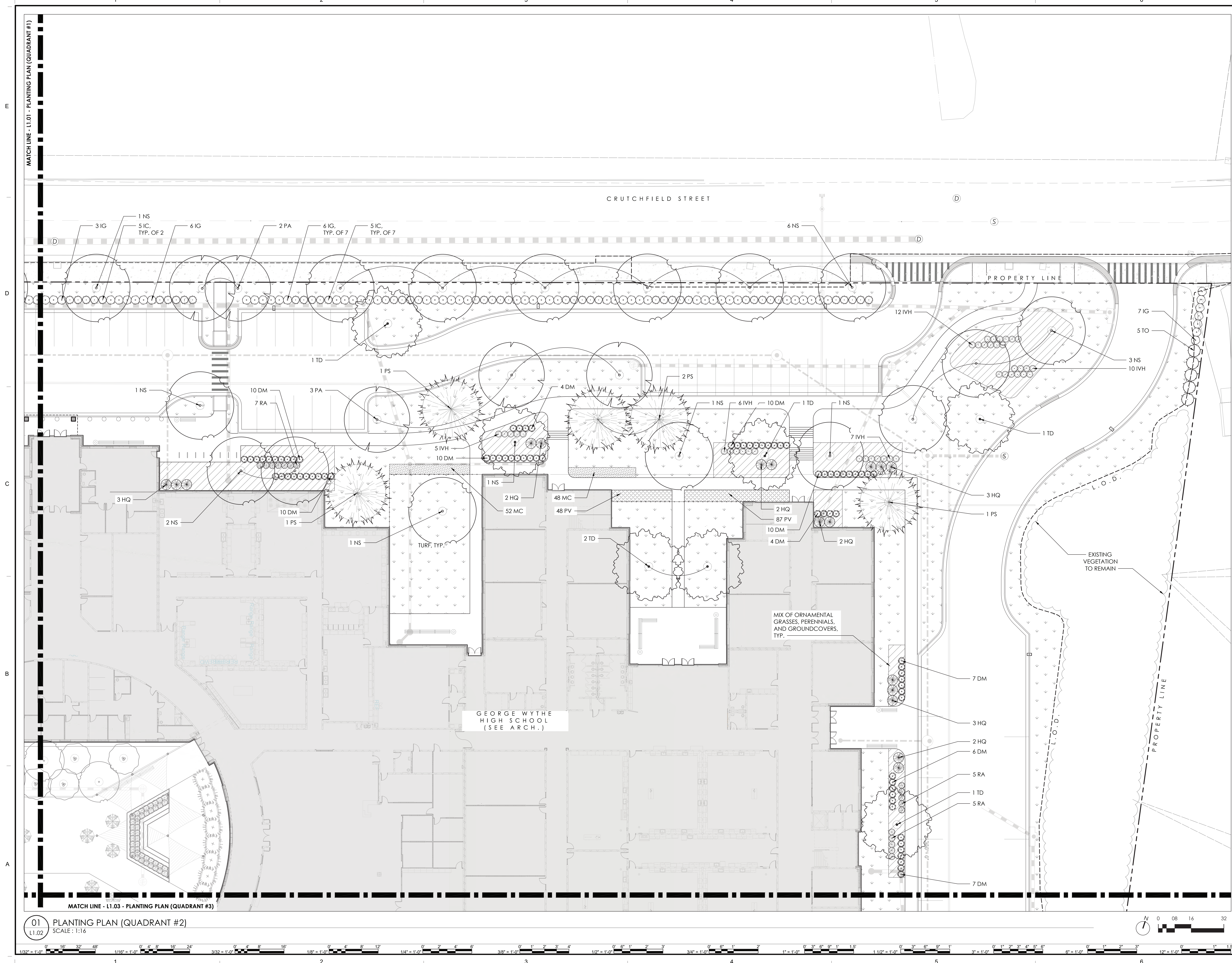
NOT FOR CONSTRUCTION
02.16.2023
UDC SUBMITTAL

PROJECT RICHMOND PUBLIC SCHOOLS
GEORGE WYTHE HIGH SCHOOL
4314 CRUTCHFIELD STREET
RICHMOND, VIRGINIA 23225
DRAWING PLANTING PLAN (QUADRANT #1)

SHEET

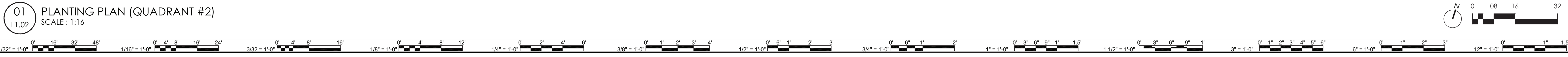
L1.01

8/10/2022 4:43:23 PM Autodesk Docs/21310-00 George Wythe High School/21310-00 423 George Wythe High School - ARCH.rvt



MATCH LINE - L1.01 - PLANTING PLAN (QUADRANT #1)

MATCH LINE - L1.03 - PLANTING PLAN (QUADRANT #3)



01 PLANTING PLAN (QUADRANT #2)
L1.02 SCALE: 1:16

DESCRIPTION	
BY	REVISIONS
MARK	DATE
DATE	REVISIONS

waterstreetstudio
landscape architecture • civil engineering
441 North Street, Suite 202
Richmond, Virginia 23219
(804)277-8987

DATE	PROJECT	DESIGNED	DRAWN	CHECKED
02.16.2023	21310-00	SP, JR	SP, JR	JN

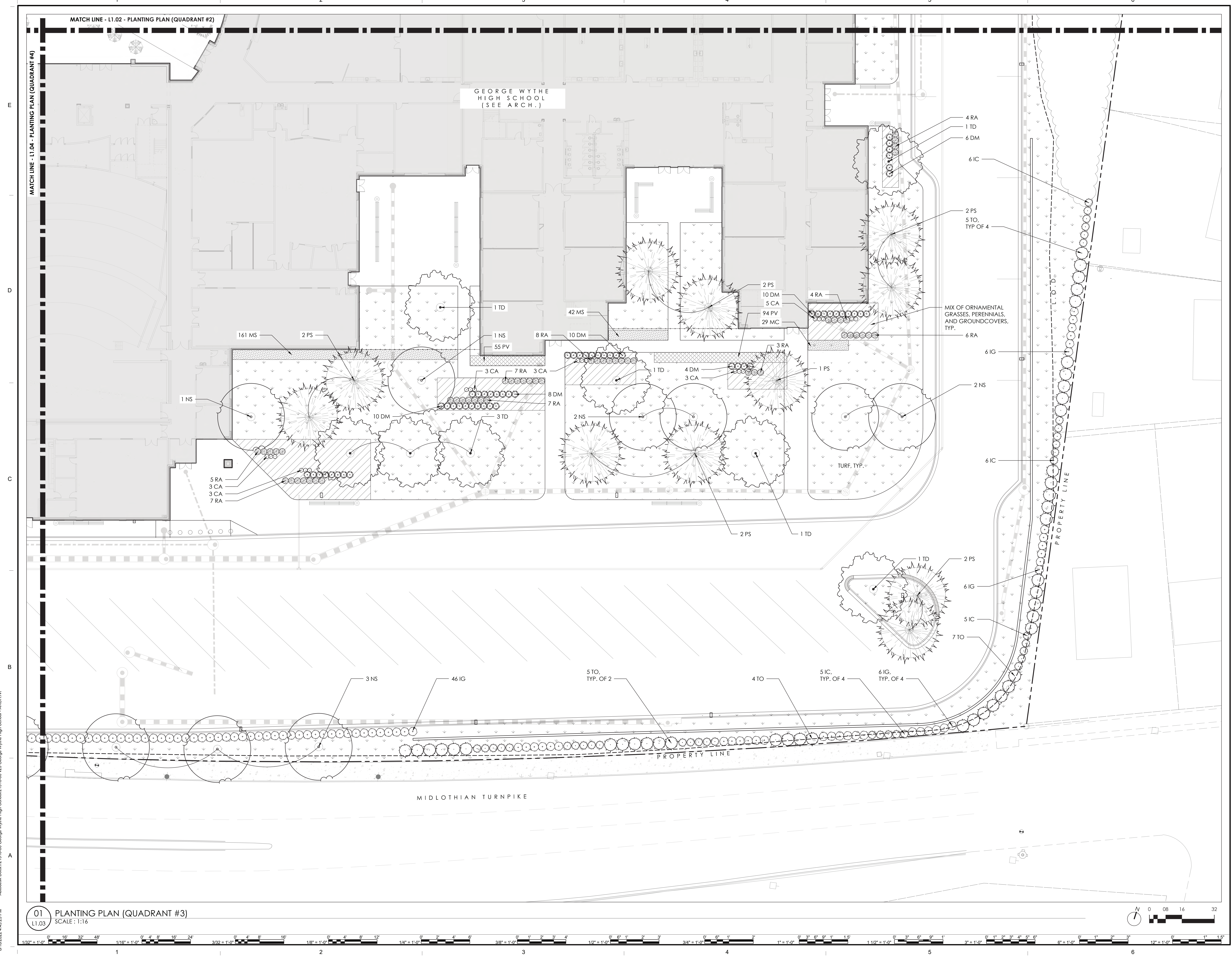
RRMM
ARCHITECTS, PC
115 South 15th Street, Suite 202
Richmond, Virginia 23219
(804)277-8987

02.16.2023
UDC SUBMITTAL

RICHMOND PUBLIC SCHOOLS
GEORGE WYTHE HIGH SCHOOL
4314 CRUTCHFIELD STREET
RICHMOND, VIRGINIA 23225

PLANTING PLAN (QUADRANT #2)

SHEET
L1.02

[illegible]

waterstreetstudio
landscape architecture | civil engineering
40 E Main Street 434.295.5777 Charlottesville, VA 22902

DATE	02.16.2023
PROJECT	21310-00
DESIGNED	SP,JR
DRAWN	SP,JR
CHECKED	JN



RRMM
ARCHITECTS, PC
5 South 15th Street, Suite 202
Richmond, Virginia 23219
(804)277-8987



VIRGINIA DEPARTMENT OF EDUCATION: 123-74-01-100

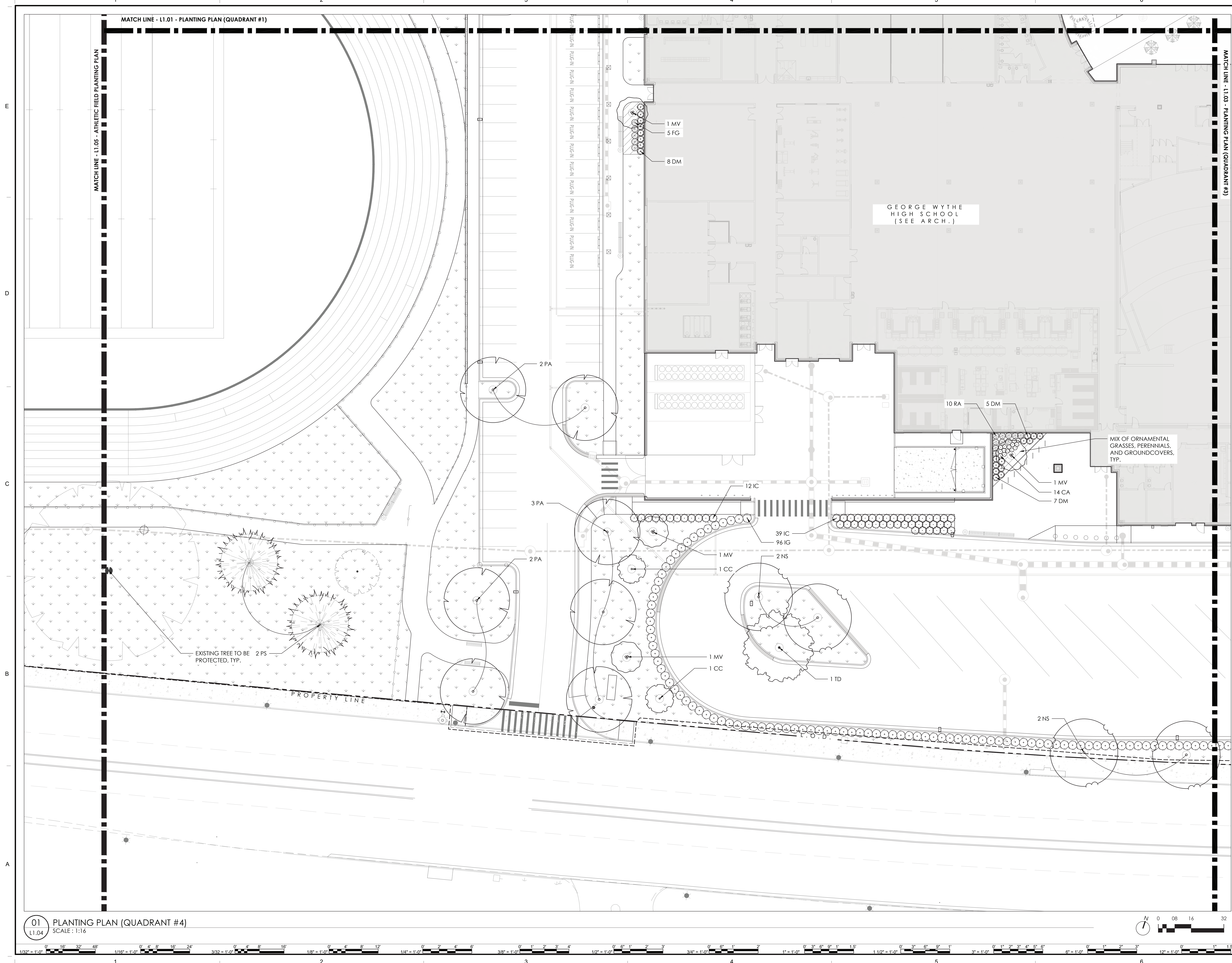
PROJECT RICHMOND PUBLIC SCHOOLS
GEORGE WYTHE HIGH SCHOOL
4314 CRUTCHFIELD STREET
RICHMOND, VIRGINIA 23225

DRAWING PLANTING PLAN (QUADRANT #3)

SHEET

L1.03

8/10/2022 4:43:23 PM Autodesk Docs://21310-00 George Wythe High School/21310-00 023 George Wythe High School - ARCH.rvt



01 PLANTING PLAN (QUADRANT #4)
L1.04 SCALE: 1:16

DESCRIPTION	
BY	
MARK	DATE
REVISIONS	
waterstreetstudio landscape architecture civil engineering 414 North 15th Street, Suite 202 Richmond, Virginia 23219 (804)277-8987	
DATE	02.16.2023
PROJECT	21310-00
DESIGNED	SP, JR
DRAWN	SP, JR
CHECKED	JN

RRMM
ARCHITECTS, PC
115 South 15th Street, Suite 202
Richmond, Virginia 23219
(804)277-8987

02.16.2023
UDC SUBMITTAL

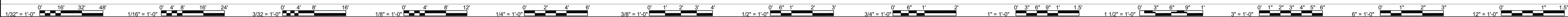
RICHMOND PUBLIC SCHOOLS
GEORGE WYTHE HIGH SCHOOL
4314 CRUTCHFIELD STREET
RICHMOND, VIRGINIA 23225

DRAWING
PLANTING PLAN (QUADRANT #4)

SHEET
L1.04

8/10/2022 4:43:23 PM Autodesk Docs/21310-00 George Wythe High School/21310-00 023 George Wythe High School - ARCH.rvt

01 ATHLETIC FIELD PLANTING PLAN
SCALE: 1:40

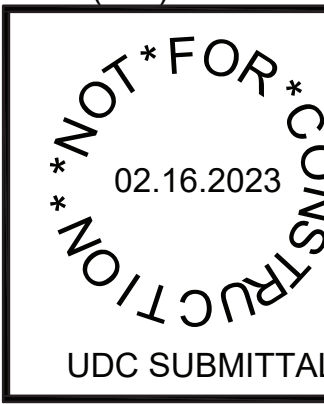


PROJECT RICHMOND PUBLIC SCHOOLS
GEORGE WYTHE HIGH SCHOOL
4314 CRUTCHFIELD STREET
RICHMOND, VIRGINIA 23225

DRAWING ATHLETIC FIELD PLANTING PLAN

SHEET
L1.05

VIRGINIA DEPARTMENT OF EDUCATION 123-74-1-100



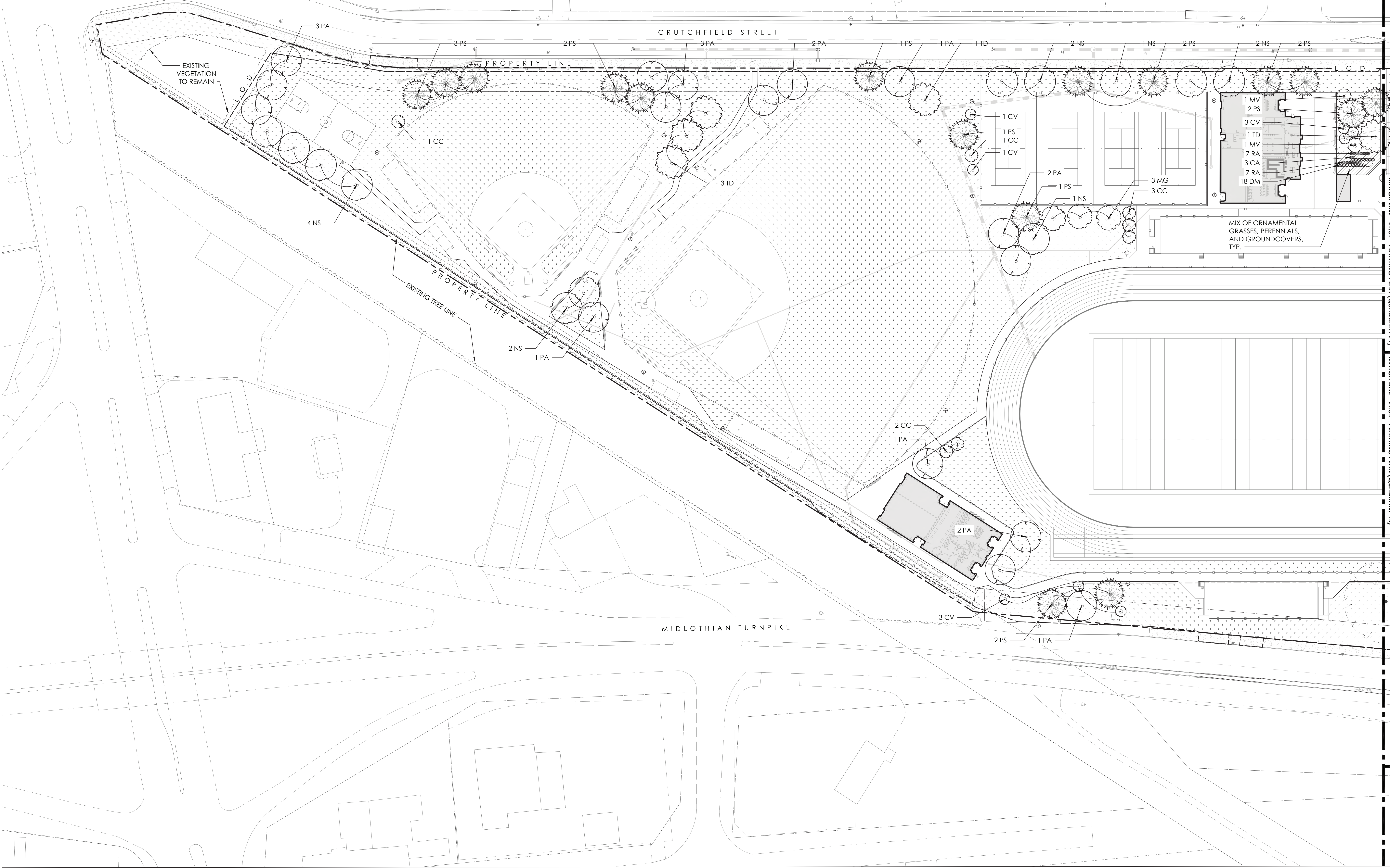
RRMM
ARCHITECTS, PC
115 South 15th Street, Suite 202
Richmond, Virginia 23219
(804)277-8987



DATE	02.16.2023	PROJECT	21310-00	DESIGNED	SP, JR	DRAWN	SP, JR	CHECKED	JN
------	------------	---------	----------	----------	--------	-------	--------	---------	----

waterstreetstudio
landscape architecture | civil engineering
434 North 15th Street, Suite 202

MARK	DATE	BY	DESCRIPTION



PLANTING NOTES

1. CONTRACTOR SHALL VERIFY PLANT QUANTITIES SHOWN ON PLAN WITH TOTALS IN PLANTING SCHEDULE. NOTIFY LANDSCAPE ARCHITECT OF ANY DISCREPANCIES PRIOR TO FINAL BIDDING. UNITS PRICES BE SUBMITTED AS PART OF FINAL BID.
2. ALL PLANTS SHALL BE GUARANTEED FOR ONE (1) FULL YEAR AND SHALL BE IN A HEALTHY GROWING CONDITION. PLANT MATERIALS WHICH DO NOT FULFILL THIS GUARANTY SHALL BE REPLACED AT NO COST TO THE OWNER. REPLACEMENT SHALL BE GUARANTEED THROUGHOUT THE ORIGINAL GUARANTY PERIOD. PLANTS THAT DIE SHALL BE REPLACED IMMEDIATELY.
3. CONTRACTOR IS RESPONSIBLE FOR WATERING, WEEDING, PEST CONTROL, AND FERTILIZATION OF ALL PLANTS UNTIL, a.) UPON FINAL ACCEPTANCE IS ISSUED BY LANDSCAPE ARCHITECT AND/OR OWNER, AND b.) THE CONTRACTOR PROVIDES OWNER WRITTEN NOTIFICATION OF ALL MAINTENANCE NEEDS OF ALL SCOPE ASSOCIATED WITH THE PLANTING PLAN(S) CONTRACT DOCUMENTS.
4. CONTRACTOR IS RESPONSIBLE FOR CONTACTING MISS UTILITY PRIOR TO THE BEGINNING OF CONSTRUCTION FOR LOCATION OF ALL UTILITY LINES. TREES SHALL BE LOCATED A MINIMUM OF FIVE (5) FEET FROM SEWER/WATER CONNECTIONS. NOTIFY LANDSCAPE ARCHITECT OF CONFLICTS.
5. THE LANDSCAPE ARCHITECT IS THE OWNER'S REPRESENTATIVE AND SHALL BE THE APPROVING AUTHORITY FOR INFORMATION PROVIDED WITHIN THESE PLANS AND SPECIFICATIONS.
6. ALL PLANTS, TOPSOIL, MULCH, FERTILIZERS, SOIL AMENDMENTS, PLANTING SUPPLIES, AND METHODS SHALL BE SUBJECT TO LANDSCAPE ARCHITECTS APPROVAL. REJECTED MATERIALS SHALL BE REMOVED FROM THE SITE WITHOUT DELAY AT NO EXPENSE TO THE OWNER.
7. CONTRACTOR SHALL LAYOUT AND MARK LOCATION FOR ALL PLANTS, AND IMPROVEMENTS SHOWN AND SHALL REQUEST IN FIELD APPROVAL FROM LANDSCAPE ARCHITECT.
8. ALL PLANTS AND PLANTING METHODS SHALL CONFORM TO AMERICAN STANDARD FOR NURSERY STOCK.
8. BEDS TO CONTAIN SHRUBS, PERENNIALS, ORNAMENTAL GRASSES, OR PERENNIALS SHALL BE TILLED TO A DEPTH OF 12" AND THE SOIL CONDITIONED BY ADDING 4" OF A U.S. COMPOSTING COUNCIL APPROVED COMPOST.
9. ALL PLANTING BED AREAS SHALL BE COVERED WITH A 3" MINIMUM LAYER OF MEDIUM TEXTURED SHREDDED HARDWOOD MULCH UNLESS OTHERWISE NOTED.
10. ALL SUBSTITUTIONS OF PLANTS SHALL BE REQUESTED IN WRITING TO THE LANDSCAPE ARCHITECT AND APPROVED IN WRITING BY THE OWNER OR THE OWNER'S REPRESENTATIVE.
11. ALL PLANTING OPERATIONS SHALL BE UNDER THE SUPERVISION OF AN EXPERIENCED PLANTSMAN.
12. LANDSCAPE ARCHITECT RESERVES THE RIGHT TO SELECT PLANTS IN THE NURSERY.
13. FOR TREES BALLED IN WIRE BASKETS, CUT AND REMOVE TOP AND SIDES OF BASKET AFTER INSTALLATION.
14. LANDSCAPE ARCHITECT RESERVES THE RIGHT TO REJECT AND PLANTS AND MATERIALS THAT ARE IN AN UNHEALTHY OR UNSIGHTLY CONDITION, AS WELL AS PLANTS AND MATERIALS THAT DO NOT CONFORM TO A.A.N. STANDARDS.
15. SOIL SHALL BE FREE OR ALL WEEDS AND ROCKS GREATER THAN 1" IN DIAMETER.
16. PLANT SIZES, QUANTITIES, AND SPECIES WILL BE CHECKED BY MUNICIPALITY INSPECTION FOR COMPLIANCE WITH PLANT SCHEDULE AS APPROVED BY THE MUNICIPALITY. CONTRACTOR SHALL BE HELD RESPONSIBLE FOR DELAY IN ISSUANCE OF CERTIFICATE OF OCCUPANCY BY THE MUNICIPALITY RESULTING FROM UNAUTHORIZED SUBSTITUTIONS OR DOWNSIZING.
17. UPON COMPLETION OF LANDSCAPE INSTALLATION, THE LANDSCAPE CONTRACTOR SHALL NOTIFY THE GENERAL CONTRACTOR WHO WILL VERIFY COMPLETENESS, INCLUDING THE REPLACEMENT OF ALL DEAD PLANT MATERIAL, AND SCHEDULE A FINAL INSPECTION FOR ACCEPTANCE BY OWNER.
18. CONTRACTOR SHALL REMOVE TREE STAKING AT THE END OF THE ONE YEAR WARRANTEE PERIOD.
19. CONTACT D.P.R. PRIOR TO PLANTING ALL TREES ON SITE TO REVIEW EXCAVATION, PLANTING MEDIA, AND INSTALLED PLANTING STOCK.
20. ALL PEST CONTROL SHALL BE UNDER THE DIRECTION OF A VIRGINIA LICENSED APPLICATOR.

GENERAL MAINTENANCE NOTES

21. GUIDELINES ON SITE MAINTENANCE OF PLANTINGS AND PUBLIC SPACES ARE PROVIDED BELOW. THIS OUTLINE SHOULD NOT BE CONSIDERED COMPREHENSIVE AND PRIORITIES SHOULD BE ADJUSTED BY GROUNDS MANAGEMENT STAFF BASED ON REAL-TIME NEEDS.

MAINTENANCE BY SEASON

YEAR-ROUND

22. REMOVE TRASH FROM ALL AREAS. REMOVE DEBRIS FROM PAVED AREAS VIA SWEEPING OR BLOWING.
23. CONTROL AND REMOVE WEEDS IN ALL NON-TURF AREAS INCLUDING PAVEMENT JOINTS, PLANTING BEDS, ROCK OR GRAVELED AREAS, ETC. AS NECESSARY TO KEEP WEEDS FROM A) BECOMING UNSIGHTLY AND B) SETTING SEED OR MULTIPLYING BY ROOT STRUCTURES.
24. PRUNE OUT ALL DEADWOOD WITHIN REACH OF GROUNDWORKERS AND REMOVE ANY FALLEN DEBRIS.
25. MONITOR PLANT WATER LEVELS AND ADJUST IRRIGATION OR PROVIDE SUPPLEMENTAL IRRIGATION AS NEEDED TO PREVENT SEVERE PLANT STRESS.
26. MONITOR PAVED AREAS FOR OBSTRUCTIONS OR UNEVEN SURFACES THAT COULD LEAD TO TRIPPING.
27. KEEP BIOSWALES, INLET OPENINGS AND CATCH BASIN GRATES FREE OF DEBRIS SUCH AS LEAVES AND TRASH.

SPRING

28. MONITOR PLANTS FOR PRESENCE OF DISEASE OR PEST DAMAGE. IMPLEMENT CONTROL MEASURES AS NEEDED.
29. CHARGE AND TEST IRRIGATION SYSTEM, IF PRESENT.
30. APPLY SOIL AMENDMENTS AS NEEDED.
31. BEGINNING MOWING WHEN TURF REACHES 4-5" HEIGHT. MOW AT HEIGHT NO LESS THAN 2".
32. REMOVE ANY REMAINING LEAF DEBRIS FROM PLANTING BEDS AND OTHER SURFACES.
33. MONITOR SOIL MOISTURE LEVELS. PROVIDE SUPPLEMENTAL WATER TO ALL PLANTINGS AS NEEDED IN TIMES OF DROUGHT.
34. MONITOR PLANTS FOR PRESENCE OF DISEASE OR PEST DAMAGE. IMPLEMENT CONTROL MEASURES AS NEEDED.
35. MOW TURF AS NEEDED AT HEIGHT NO LESS THAT 3".
36. PRUNE SHRUBS THAT BLOOM ON LAST YEAR'S WOOD (GENERALLY EARLY BLOOMING SHRUBS) JUST AFTER BLOOMING AND ONLY AS NECESSARY TO IMPROVE FORM, PROMOTE HEALTH, OR CONTROL SIZE.
37. TOP DRESS TURF AREAS WITH COMPOST AS NEEDED, THEN CORE-AERATE AND OVERSEED (LATE SUMMER).

AUTUMN

38. FERTILIZE ALL PLANTED AREAS AS RECOMMENDED BY SOIL ANALYSIS REPORT USING A SLOW-RELEASE NITROGEN SOURCE AT RECOMMENDED RATES.
39. FERTILIZE TURF AREAS TWICE AT 4-6-WEEK INTERVAL WITH A BALANCED TURF FERTILIZER CONTAINING A SLOW-RELEASE NITROGEN SOURCE. APPLY AMOUNT SUFFICIENT TO PROVIDE 1 LB. ACTUAL NITROGEN/1000 SQUARE FEET OF TURF OR AS RECOMMENDED BY SOIL ANALYSIS REPORT. APPLY PH CORRECTING MATERIAL AS RECOMMENDED BY SOIL ANALYSIS REPORT. IMMEDIATELY REMOVE ALL FERTILIZER THAT FALLS ON PAVED AREAS.
40. CORE-AERATE AND OVERSEED TURF AREAS IN EARLY AUTUMN WHILE SOILS ARE STILL WARM. OVERSEED WITH RECOMMENDED VARIETIES FROM THE VIRGINIA TECH TURFGRASS TRIALS.
41. CHOP/MULCH FALLEN LEAVES IN TURF AREAS WITH A MOWER. ONLY REMOVE LEAVES WHERE ACCUMULATED DEPTHS OR CHOPPED LEAVES EXCEED 1".

WINTER

42. REMOVE LEAF DEBRIS FROM PLANTING BEDS AND OTHER SURFACES. CUT CLEAN EDGE AT TURF/PLANTING BED TRANSITIONS AND APPLY DOUBLE GROUND HARDWOOD MULCH SUFFICIENT TO UNIFORMLY MAINTAIN A 2-3" LAYER OF UNCOMPOSTED MULCH.
43. LATE WINTER-EARLY SPRING: PRUNE EVERGREEN SHRUBS GROWN FOR FOLIAGE SUCH AS HOLLIES AND BOXWOODS ALONG WITH DECIDUOUS SHRUBS THAT BLOOM ON NEW GROWTH AND MOST DECIDUOUS TREES IN LATE WINTER AS TEMPERATURES START TO WARM, BEFORE BUD BREAK. TRIM AND REMOVE FOLIAGE OF ORNAMENTAL GRASSES TO A HEIGHT OF SIX INCHES.

MAINTENANCE BY PLANT TYPE

MATURE TREE PLANTING CARE

44. MATURE TREES SHOULD RECEIVE ANNUAL INSPECTION BY AN ARBORIST TO IDENTIFY POTENTIAL SAFETY CONCERNS AND MONITOR FOR PEST, DISEASE, AND STRUCTURAL CONCERNS. AT A MINIMUM, CROWN CLEANING OF MATURE TREES SHOULD BE PERFORMED ON A BIENNIAL BASIS. UNDER NO CIRCUMSTANCES SHOULD TREES BE TOPPED. TREES THAT HAVE BEEN TOPPED PREVIOUSLY SHOULD RECEIVE RESTORATION PRUNING. ALL TREE CARE OPERATIONS SHOULD BE PERFORMED BY AN ISA CERTIFIED ARBORIST.

NEW TREE PLANTING CARE

45. JUVENILE OR NEWLY PLANTED TREES SHOULD BE MONITORED FOR PEST AND DISEASE CONCENS AND SHOULD RECEIVE BIENNIAL PRUNING TO PROMOTE SOUND STRUCTURE. ALL TREE CARE OPERATIONS SHOULD BE PERFORMED BY AN ISA CERTIFIED ARBORIST.

ORNAMENTAL GRASSES AND PERENNIALS

46. CURRENT PRACTICE IS TO LEAVE ORNAMENTAL GRASSES AND PERENNIAL SEED HEADS STANDING TO PROVIDE WINTER INTEREST, WILDLIFE FORAGE, AND HOMES FOR BENEFICIAL INSECTS. PLANTS SHOULD NOT BE CUT BACK UNTIL SPRING WHEN NEW GROWTH COMMENCES, AND EVEN THEN, IT IS ONLY DONE FOR NEATNESS, IT DOES NOT IMPACT GROWTH. PLANTS MAY BE PINCHED, PRUNED, SHEARED OR DEAD-HEADED DURING THE GROWING SEASON TO ENCOURAGE MORE FLOWERING, A FULLER PLANT, OR A FRESH SET OF LEAVES. DISEASED OR DAMAGED PLANT PARTS SHOULD BE PRUNED AS THEY OCCUR, AND IF A PLANT IS PEST-INFESTED, THEN PERFORM CLEANUP IN FALL TO DENY THE PEST A WINTER HOME.

PLANT SCHEDULE

QTY.	SYMBOL	Scientific Name	Common Name	Size	Spacing	Root	Notes	Native
SCREENING TREES AND SHRUBS								
183	IC	<i>Ilex crenata</i> 'Steeds'	Steeds Holly	4 Ht.	48" O.C.			NO
305	IG	<i>Ilex glabra</i>	Inkberry	4 Ht.	48" O.C.			YES
3	MG	<i>Magnolia grandiflora</i>	Southern Magnolia	2 1/2" Cal.	AS SHOWN	B&B		YES
48	TO	<i>Thuja occidentalis</i>	Arborvitae	8 Ht.	AS SHOWN	B&B		YES

CANOPY TREES

53	NS	<i>Nyssa sylvatica</i>	Black Gum	2 1/2" Cal.	AS SHOWN	B&B	Single Straight Leader, Full	YES
43	PA	<i>Platanus x acerifolia</i> 'Columbia'	London Planetree	2 1/2" Cal.	AS SHOWN	B&B	Single Straight Leader, Full	NO
37	PS	<i>Pinus strobus</i>	White Pine	2 1/2" Cal.	AS SHOWN	B&B	Single Straight Leader, Full	YES
31	TD	<i>Taxodium distichum</i>	Bald Cypress	2 1/2" Cal.	AS SHOWN	B&B	Single Straight Leader, Full	YES

UNDERSTORY TREES

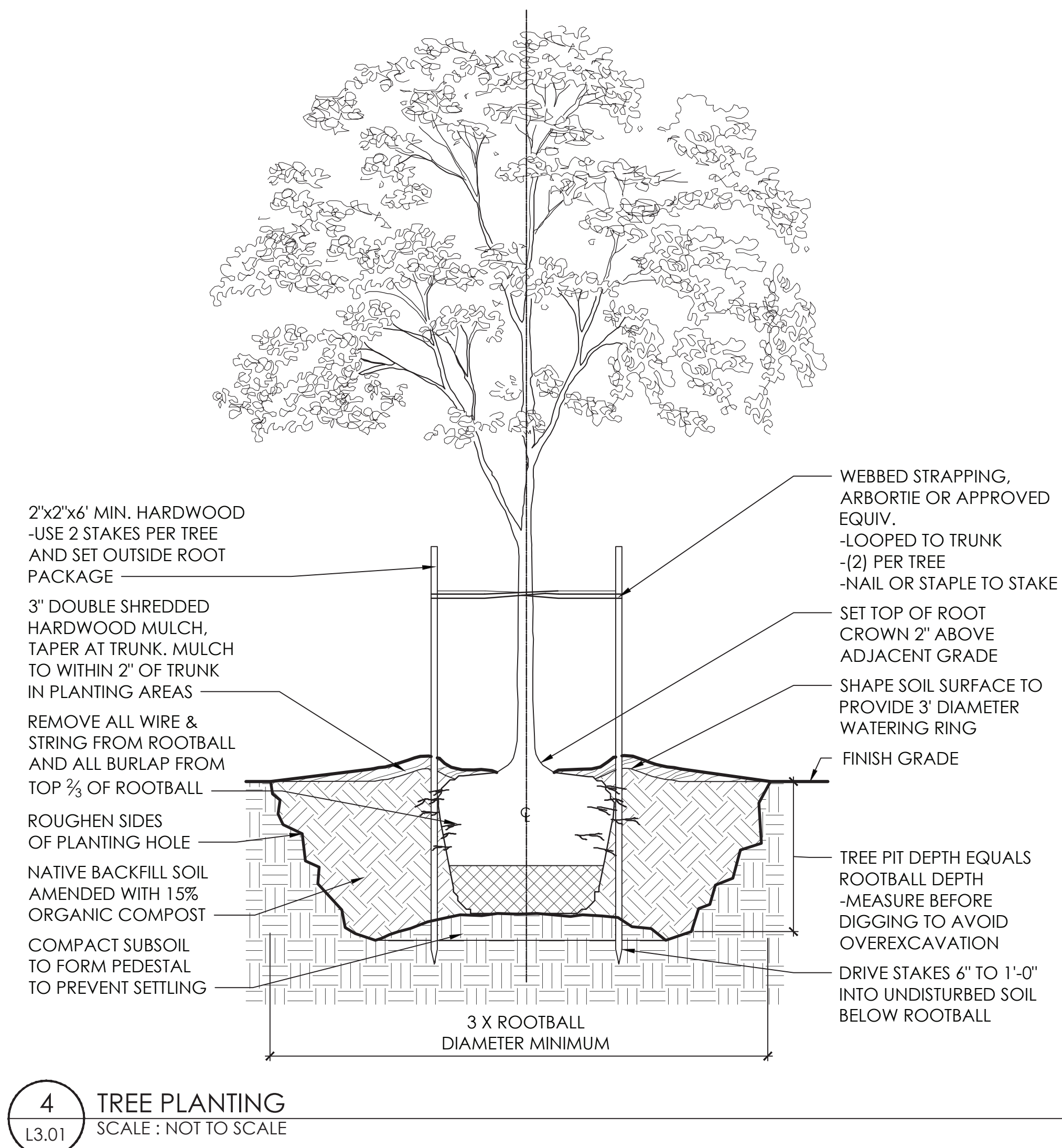
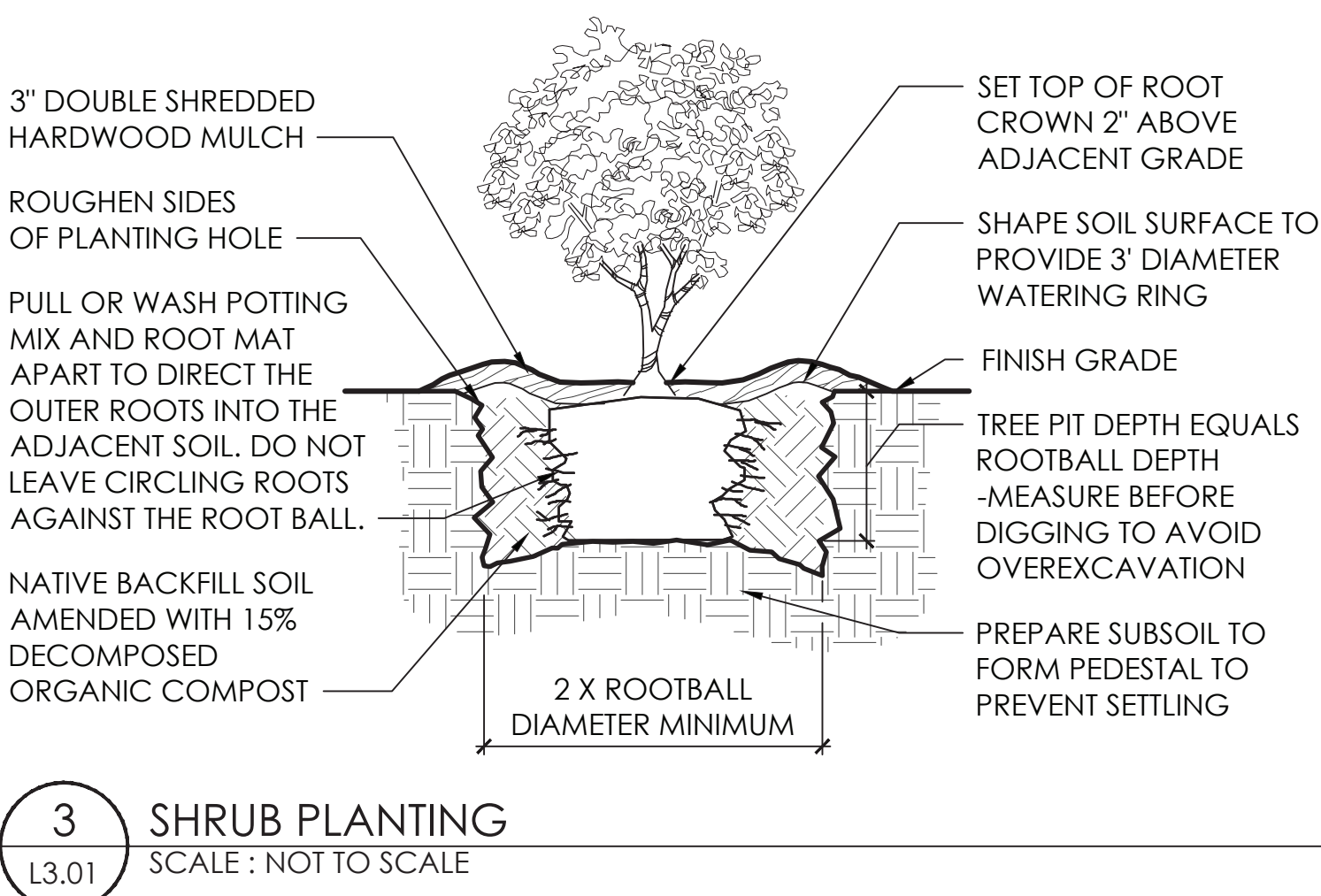
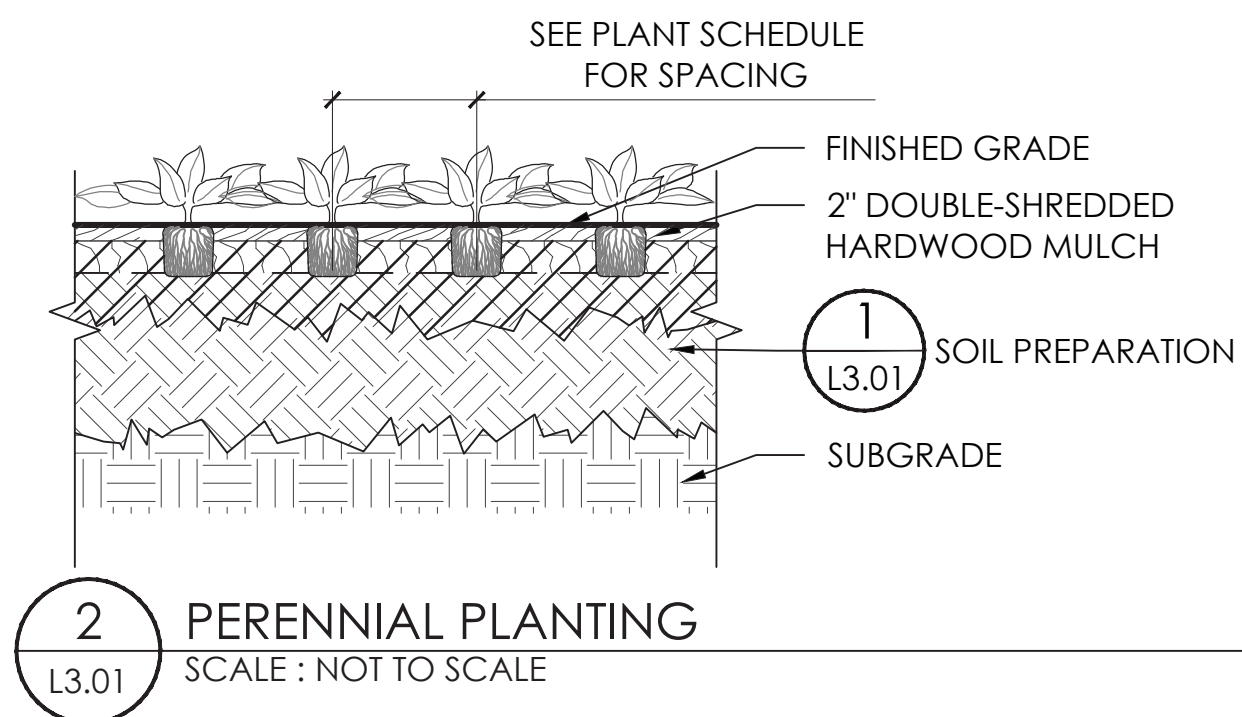
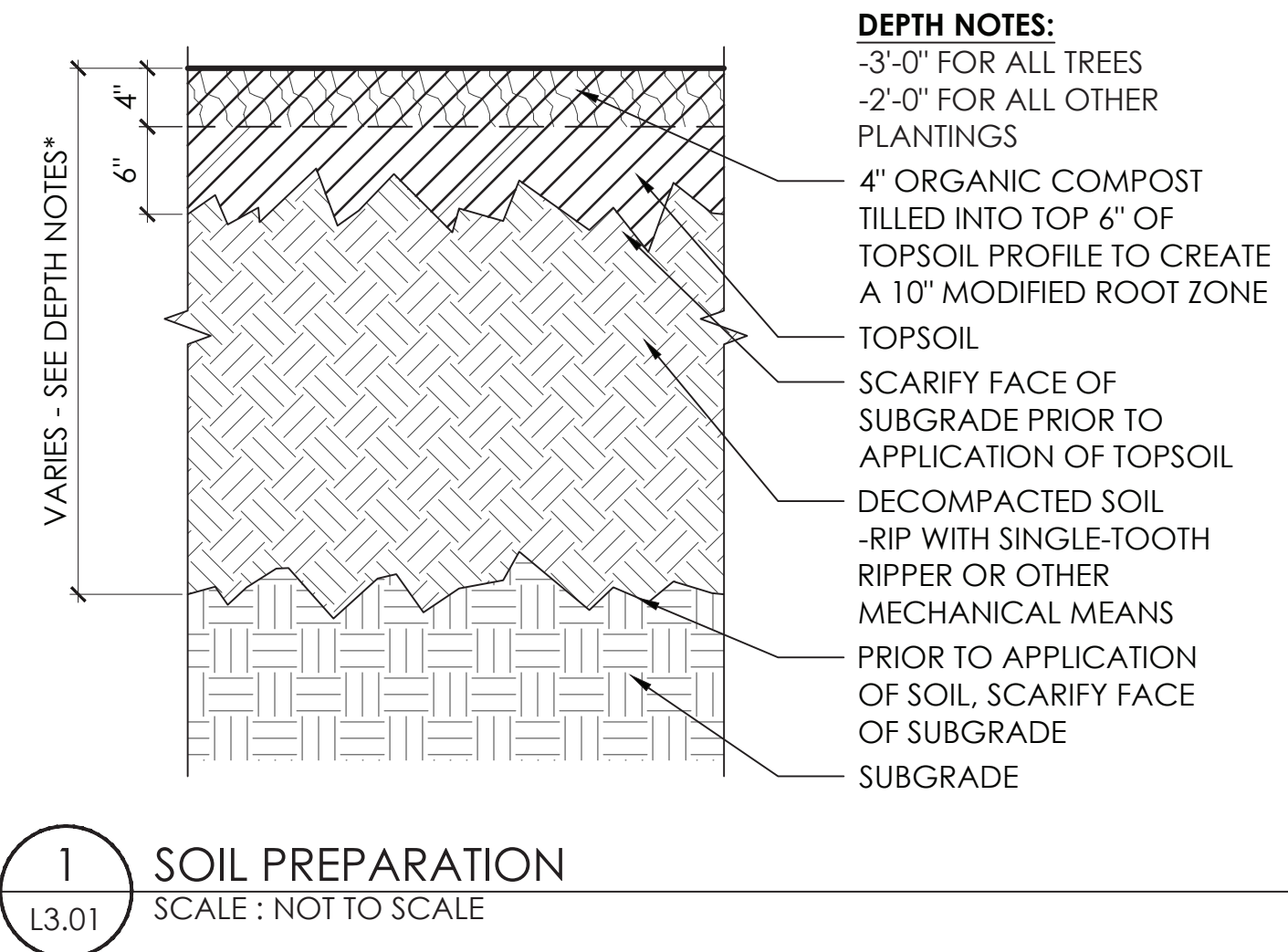
9	CC	<i>Cercis canadensis</i>	Redbud	7-8 Ht.	AS SHOWN	B&B		YES
8	CV	<i>Chionanthus virginicus</i>	Fringe Tree	7-8 Ht.	AS SHOWN	B&B		YES
12	MV	<i>Magnolia virginiana</i> 'Moonglow'	Sweetbay Magnolia	7-8 Ht.	AS SHOWN	B&B	Multi-stem	YES

ORNAMENTAL GRASSES & SHRUBS

37	CA	<i>Ceanothus americanus</i>	New Jersey Tea	3 GAL.	24" O.C.			YES
204	DM	<i>Distylium myricoides</i> 'Blue Cascade'	Blue Leaf Ito	3 GAL.	36" O.C.			NO
13	FG	<i>Fothergilla gardenii</i> 'Suzanne'	Dwarf Fothergilla	3 GAL.	36" O.C.			YES
19	HQ	<i>Hydrangea quercifolia</i> 'Flemingea'	Snow Queen Hydrangea	3 GAL.	48" O.C.			YES
40	IVH	<i>Itea virginica</i> 'Little Henry'	Little Henry Sweetspire	3 GAL.	36" O.C.			YES
332	MC	<i>Muhlenbergia capillaris</i>	Pink Muhly Grass	3 QT	24" O.C.			YES
284	PV	<i>Panicum virgatum</i>	Switchgrass	3 QT	24" O.C.			YES
194	RA	<i>Rhus aromatica</i>	Fragrant Sumac	3 QT	36" O.C.			YES
16	IV	<i>Ilex verticillata</i>	Winterberry	7 GAL.	AS SHOWN			YES

GROUNDCOVERS, PERENNIALS, & BULBS

DE	<i>Dryopteris erythrosora</i> 'Brilliance'	Autumn Fern	1 GAL.	18" O.C.				YES
ES	<i>Eragrostis spectabilis</i>	Purple Lovegrass	1 GAL.	12" O.C.				YES
NF	<i>Nepeta x faassenii</i> 'Walker's Low'	Catmint	1 GAL.	18" O.C.				HYBRID
PA	<i>Pennisetum alopecuroides</i> 'Hameln'	Dwarf Fountain Grass	1 GAL.	24" O.C.				NO
PO	<i>Packera obovata</i>	Round-leaved Ragwort	1 GAL.	12" O.C.				YES
LS	<i>Liriope spicata</i>	Lilyturf	4" pot	12" O.C.				NO
	<i>Allium</i> spp.	Ornamental Onion	bulb	18" O.C.			Interplant in drifts	HYBRID
	<i>Narcissus</i> spp.	Daffodil	bulb	2 per SF			Interplant in drifts	HYBRID



LANDSCAPE CALCULATIONS

TREE COVERAGE REQUIREMENTS

30-710.15 Requirement: 30 S.F. OF 10 YEAR CANOPY PER PARKING SPACE

Parking Spaces	259 PEDESTRIAN // 28 BUS
Required:	8,610 S.F.
Provided:	10,900 S.F.

DESCRIPTION	BY	DATE	REVISIONS

waterstreetstudio
landscape architecture • civil engineering
414 Westmore Avenue, Suite 202
Richmond, Virginia 23219

DATE	02.16.2023	PROJECT	21310-00	DESIGNED	SP, JR	DRAWN	SP, JR	CHECKED	JN
------	------------	---------	----------	----------	--------	-------	--------	---------	----



RRMM[®]
ARCHITECTS, PC
115 South 15th Street, Suite 202
Richmond, Virginia 23219
(804)277-8987



VIRGINIA DEPARTMENT OF EDUCATION - 123-74-1-100

RICHMOND PUBLIC SCHOOLS
GEORGE WYTHE HIGH SCHOOL
4314 ORTCHFIELD STREET
RICHMOND, VIRGINIA 23225
DRAWING
PLANTING NOTES AND DETAILS

SHEET

L3.01

8/10/2022 4:43:23 PM Autodesk Docs/2/1310-00 George Wythe High School/21310-00 023 George Wythe High School - ARCH.rvt

SCREENING TREES AND SHRUBS



Steed's Holly
Ilex crenata 'Steads'



Inkberry
Ilex glabra



Southern Magnolia
Magnolia grandiflora



Arborvitae
Thuja occidentalis

CANOPY TREES



Black Gum
Nyssa sylvatica



London Planetree
Platanus x acerifolia 'Columbia'



White Pine
Pinus strobus



Bald Cypress
Taxodium distichum

UNDERSTORY TREES



Redbud
Cercis canadensis



Fringe Tree
Chionanthus virginicus



Sweetbay Magnolia
Magnolia virginiana 'Moonglow'

ORNAMENTAL GRASSES & SHRUBS



New Jersey Tea
Geonanthus americanus



Blue Leaf Yew
Distylium myricoides 'Blue Cascade'



Dwarf Fothergilla
Fothergilla gardenii 'Suzanne'



Snow Queen Hydrangea
Hydrangea quercifolia 'Flemingia'



Little Henry Sweetspire
Itea virginica 'Little Henry'



Pink Muhly Grass
Muhlenbergia capillaris



Switchgrass
Panicum virgatum



Fragrant Sumac
Rhus aromatica 'Gro-Low'



Winterberry Holly
Ilex verticillata 'Red Sprite' / 'Jim Dandy'

GROUNDCOVERS & PERENNIALS



Autumn Fern
Dryopteris erythrosora 'Brilliance'



Purple Lovegrass
Eragrostis spectabilis



Catmint
Nepeta x faassenii 'Walker's Low'



Dwarf Fountain Grass
Pennisetum alopecuroides 'Hameln'



Round-leaved Ragwort
Packera obvata



Lilyturf
Liriope spicata



Ornamental Onion
Allium spp.



Daffodil
Narcissus spp.

DESCRIPTION
BY
DATE
REVISIONS

waterstreetstudio
landscape architecture • civil engineering
4410 North Street, Suite 101, Richmond, VA 23219

DATE	02.16.2023
PROJECT	21310-00
DESIGNED	SP, JR
DRAWN	SP, JR
CHECKED	JN

RRMM
ARCHITECTS, PC
115 South 15th Street, Suite 202
Richmond, Virginia 23219
(804)277-8987

UDC SUBMITTAL
NOT FOR CONSTRUCTION
02.16.2023

VIRGINIA DEPARTMENT OF EDUCATION: 123-7451-100

RICHMOND PUBLIC SCHOOLS
GEORGE WYTHE HIGH SCHOOL
4314 CRUTCHFIELD STREET
RICHMOND, VIRGINIA 23225
DRAWING
PLANTING NOTES AND DETAILS

SHEET

L3.02

8/10/2022 4:43:23 PM Autodesk Docs://21310-00 George Wythe High School/21310-00 23 George Wythe High School - ARCH.rvt

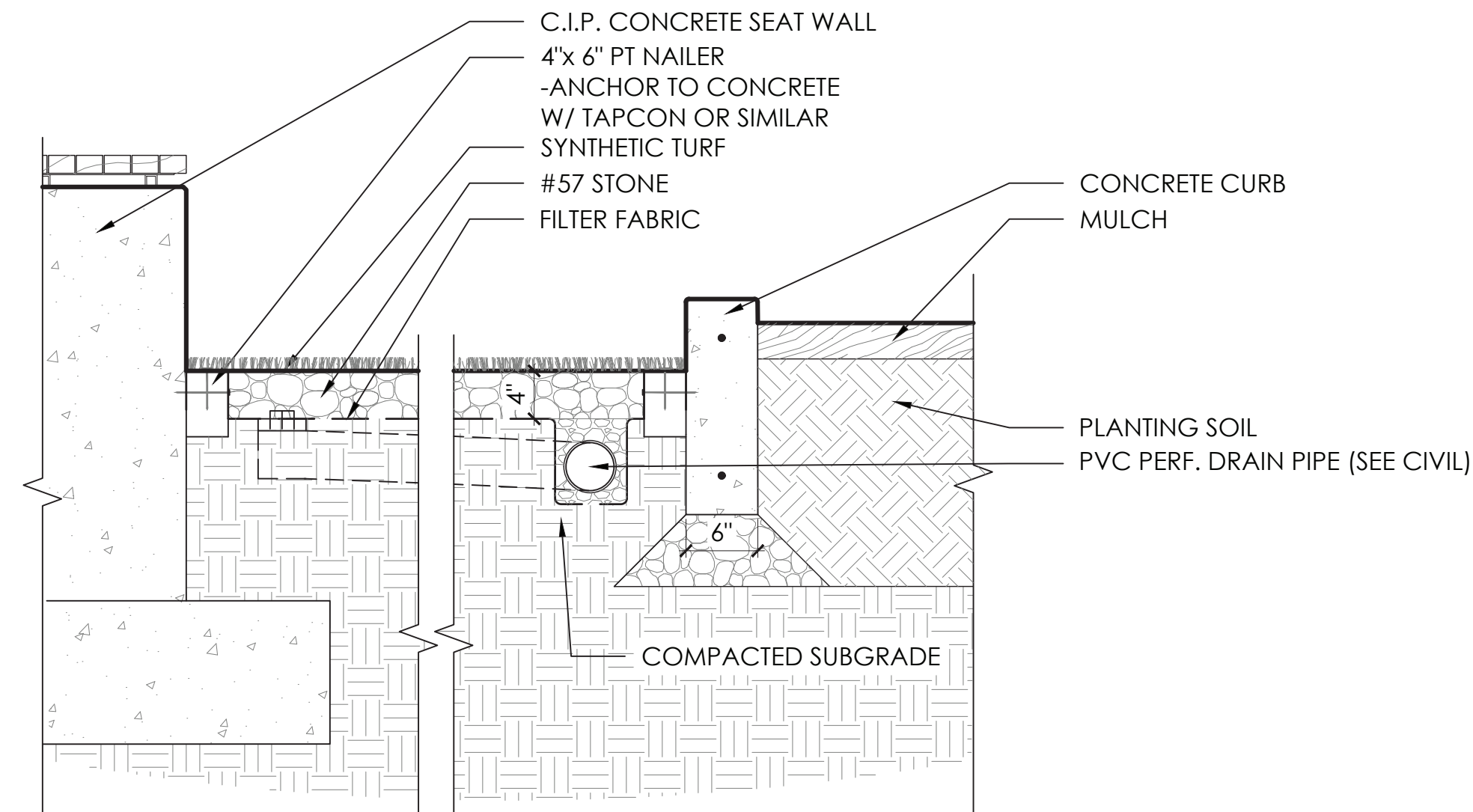
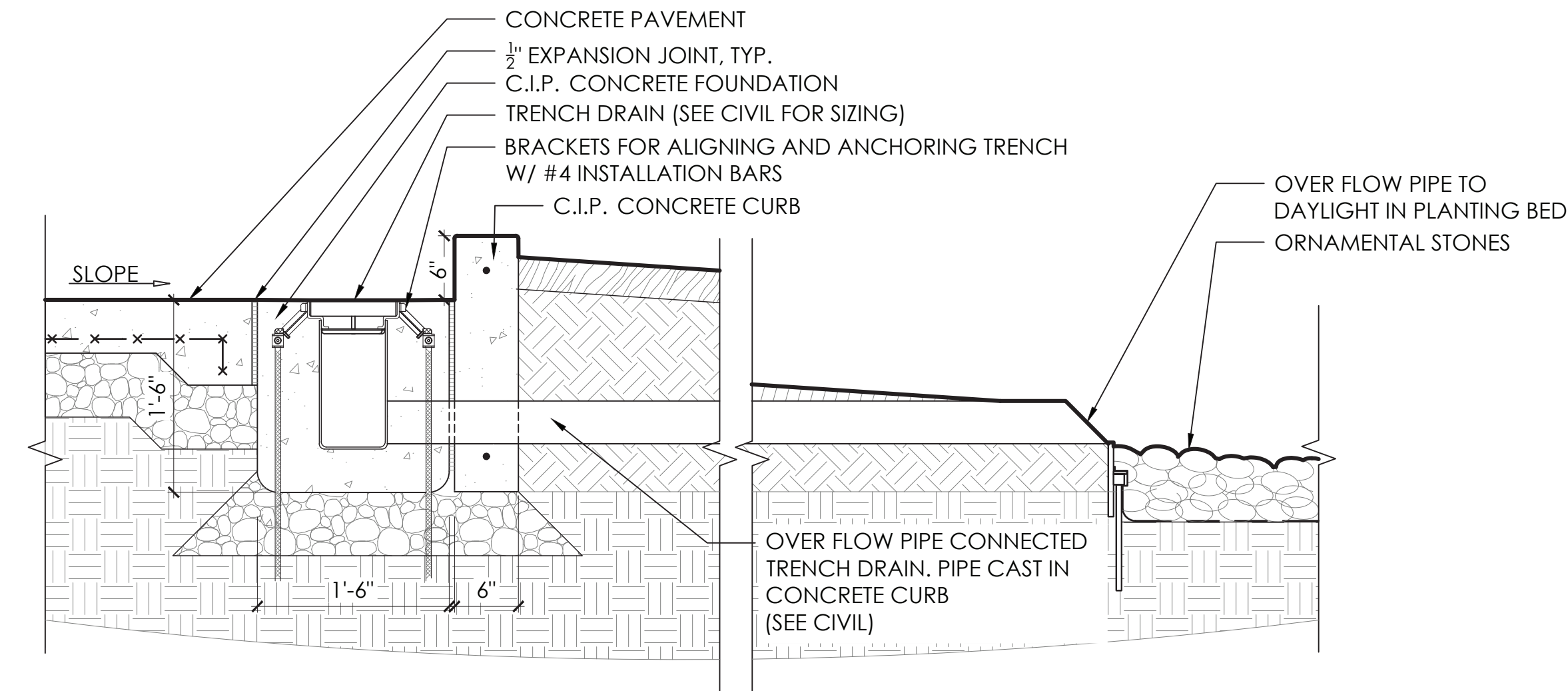
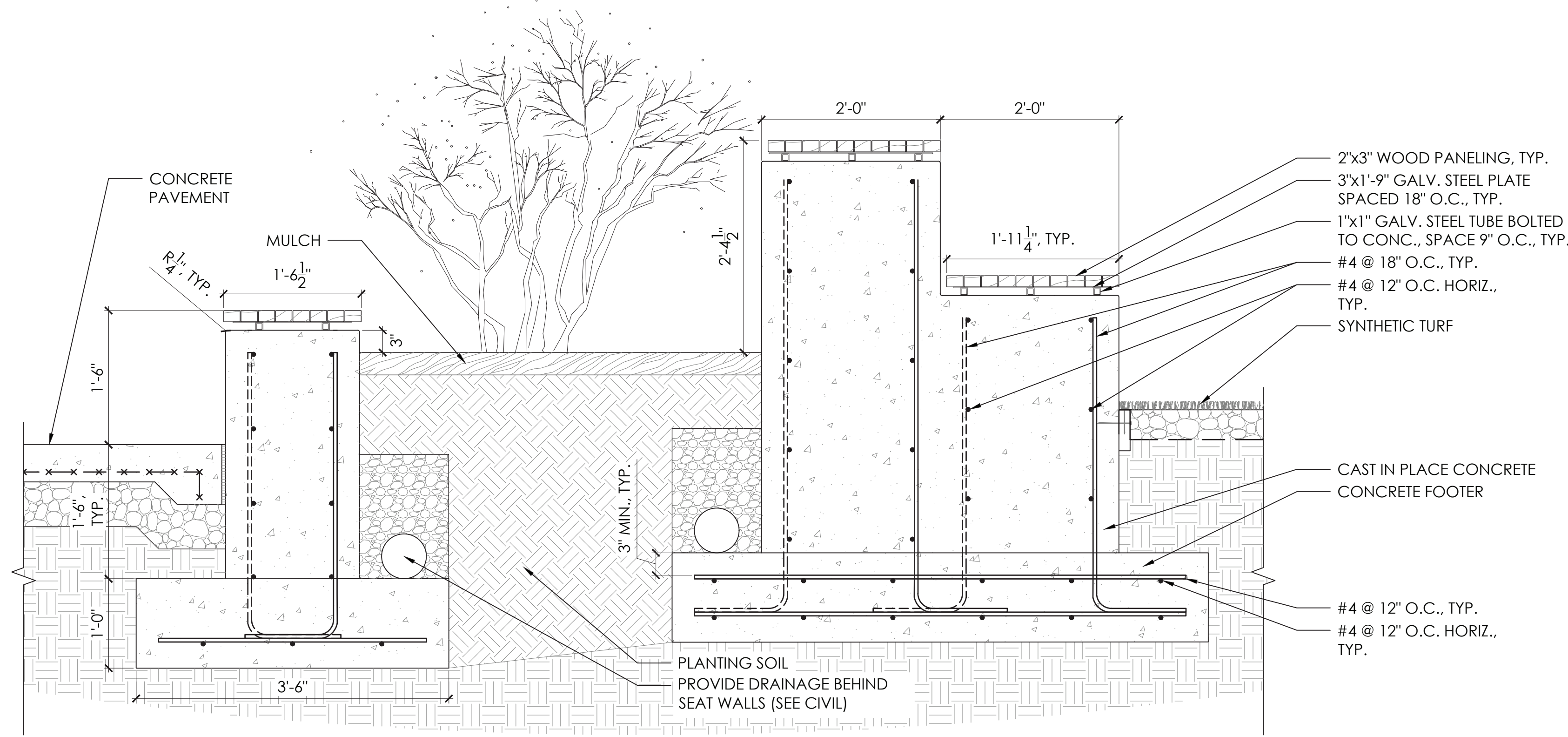
E

D

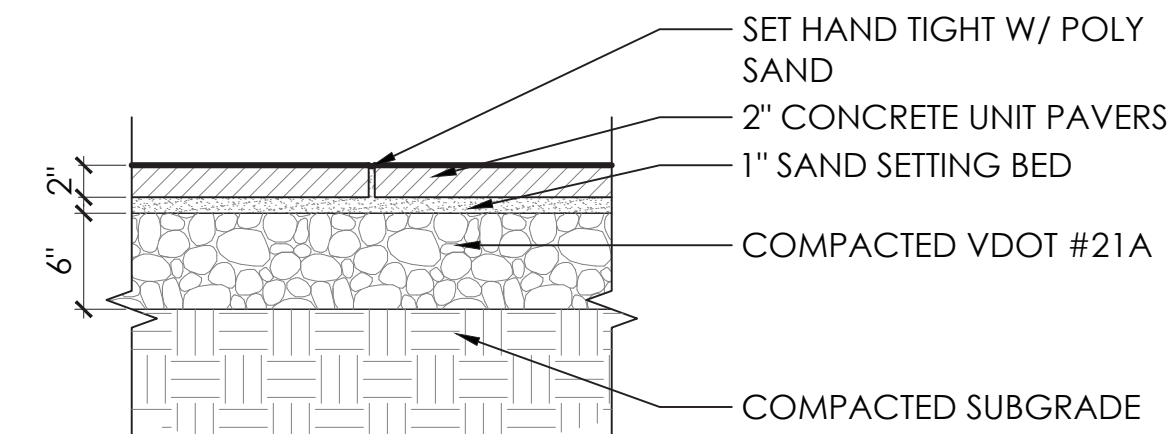
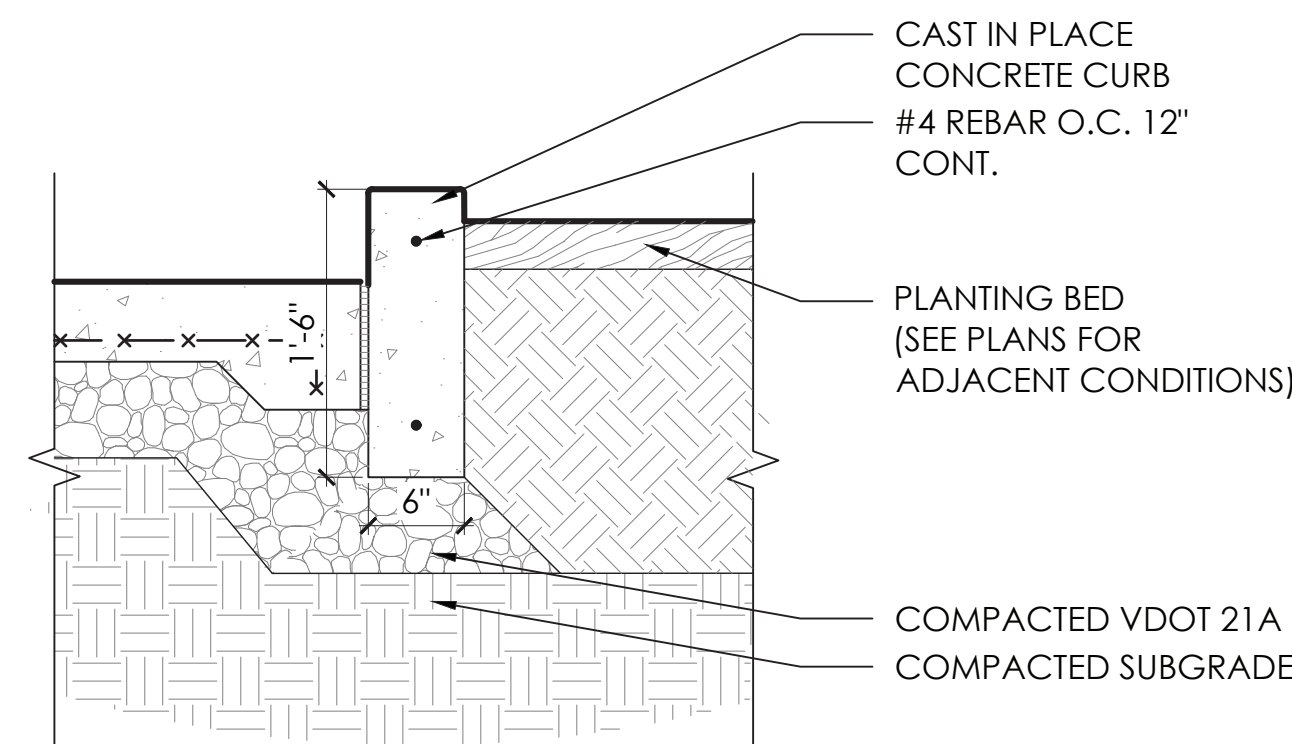
C

B

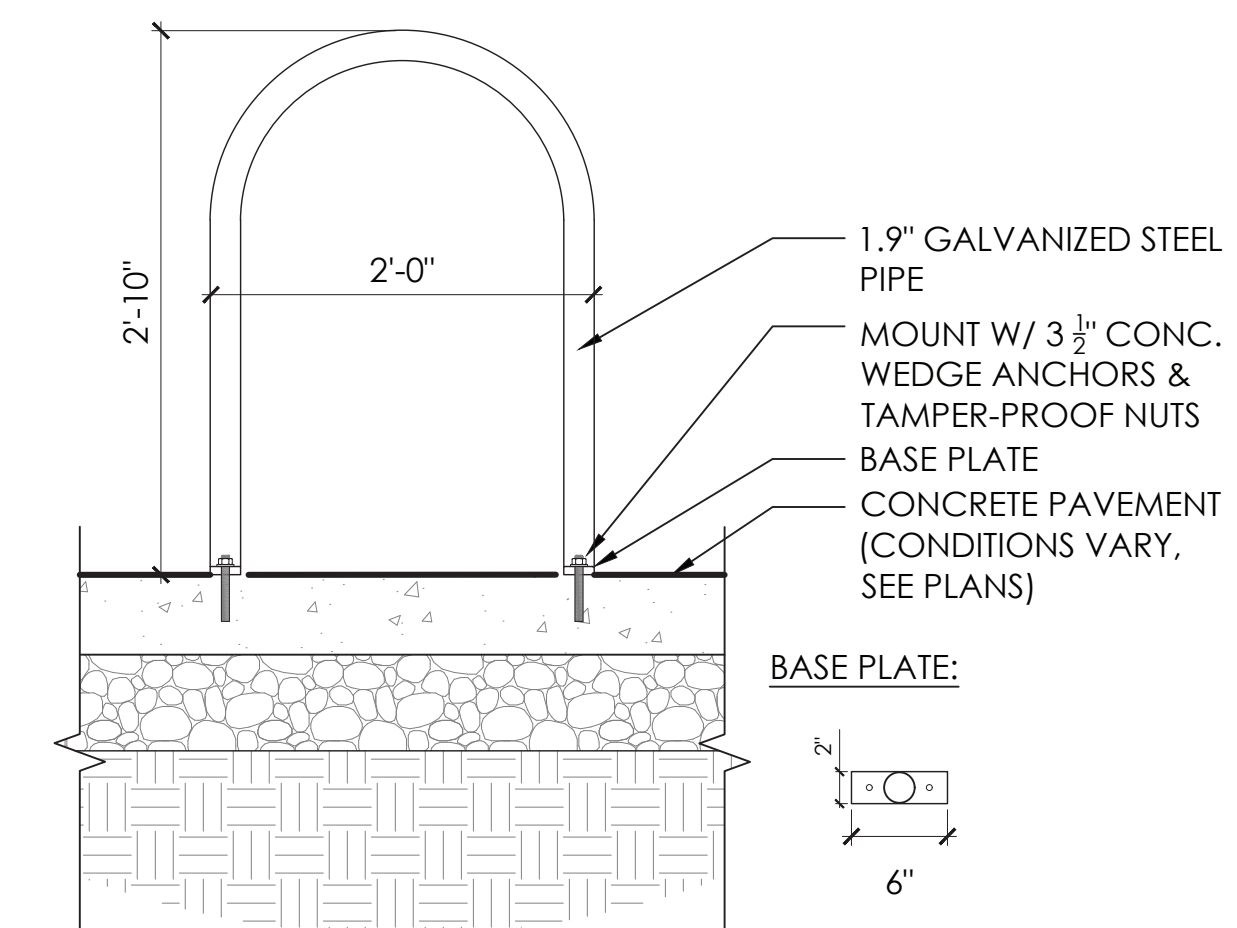
A



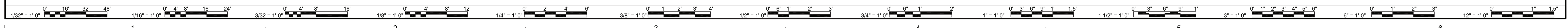
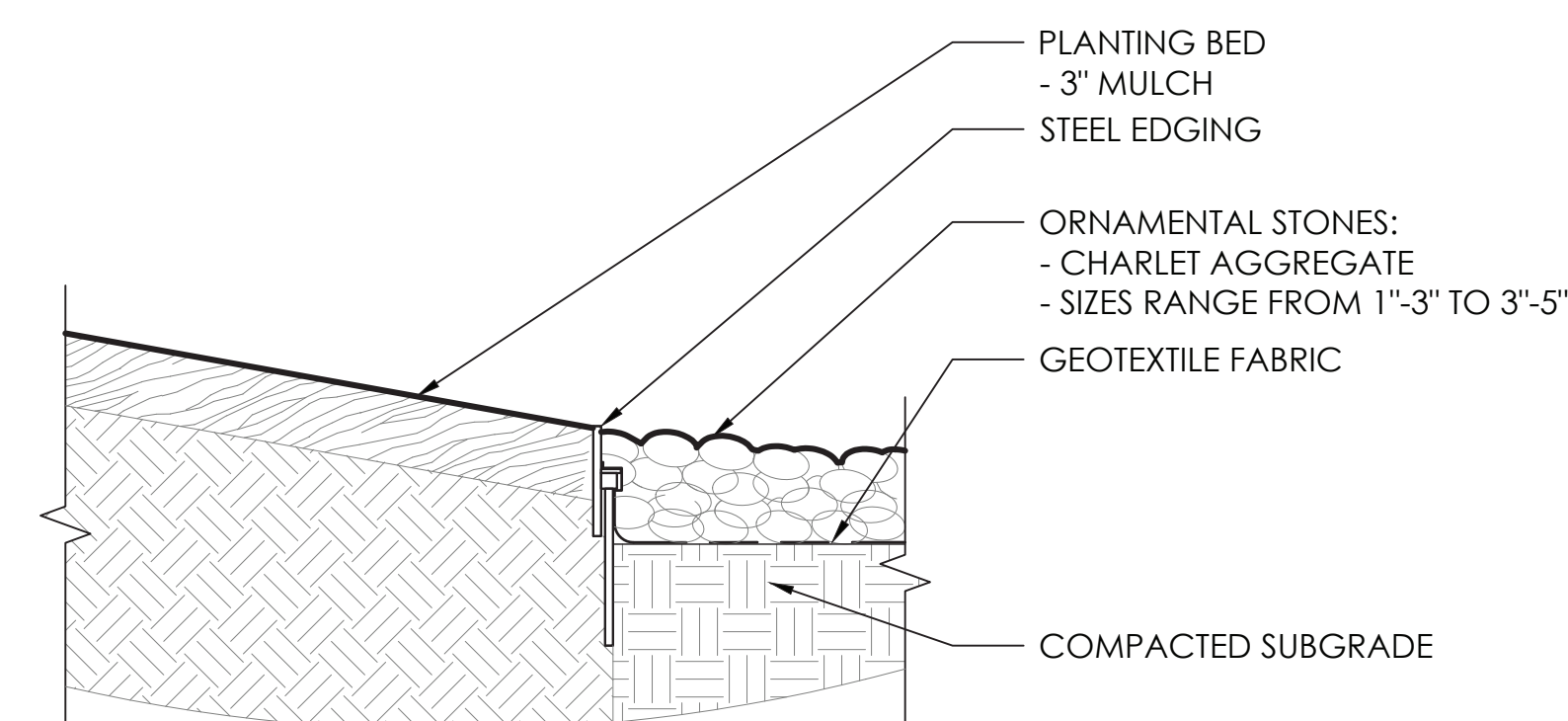
NOTES:
SYNTHETIC TURF INTERNATIONAL - SOFT LAWN BERMUDA BLEND
PILE - 1 1/2" WEIGHT - 87 OZ
BACKING - ARMORLOC POLYPROPYLENE WITH SAND INFILL
COLOR TBD



NOTES:
1. BASIS OF DESIGN: ARCANA BY UNILOCK, RUNNING BOND PATTERN
2. COLOR: TBD
3. SUBMIT SAMPLES AND MOCK UP FOR APPROVAL PRIOR TO ORDERING.



NOTE:
1. BASIS OF DESIGN: DERO HOOP RACK
2. INSTALL PER MANUFACTURER'S SPECIFICATIONS.



DESCRIPTION
BY
DATE
REVISIONS

waterstreetstudio
landscape architecture | civil engineering
414 West Main Street, Suite 202
Richmond, VA 23220

DATE 02.15.2023
PROJECT 21310-00
DESIGNED SP, JR
DRAWN SP, JR
CHECKED JN

RRMM
ARCHITECTS, PC
115 South 15th Street, Suite 202
Richmond, Virginia 23219
(804)277-8987

NOT FOR CONSTRUCTION
02.15.2023
UDC SUBMITTAL

VIRGINIA DEPARTMENT OF EDUCATION: 123-747-1100

RICHMOND PUBLIC SCHOOLS
GEORGE WYTHE HIGH SCHOOL
4314 CRUTCHFIELD STREET
RICHMOND, VIRGINIA 23225
SITE DETAILS
DRAWING

SHEET
L4.01