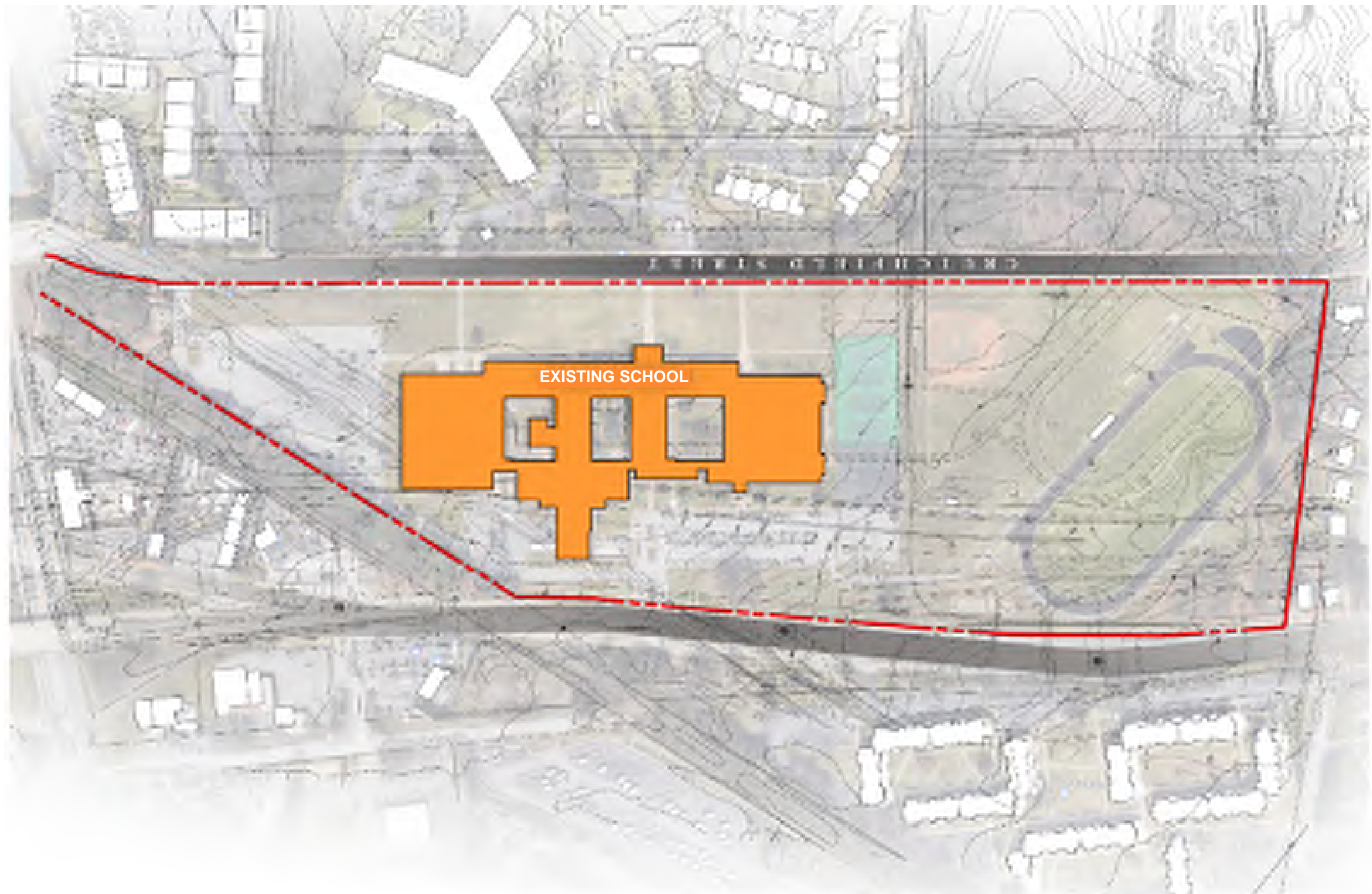


EXISTING AERIAL SITE PLAN

George Wythe High School
Richmond Public Schools

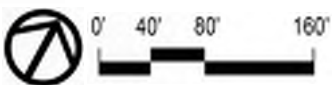
 NO SCALE



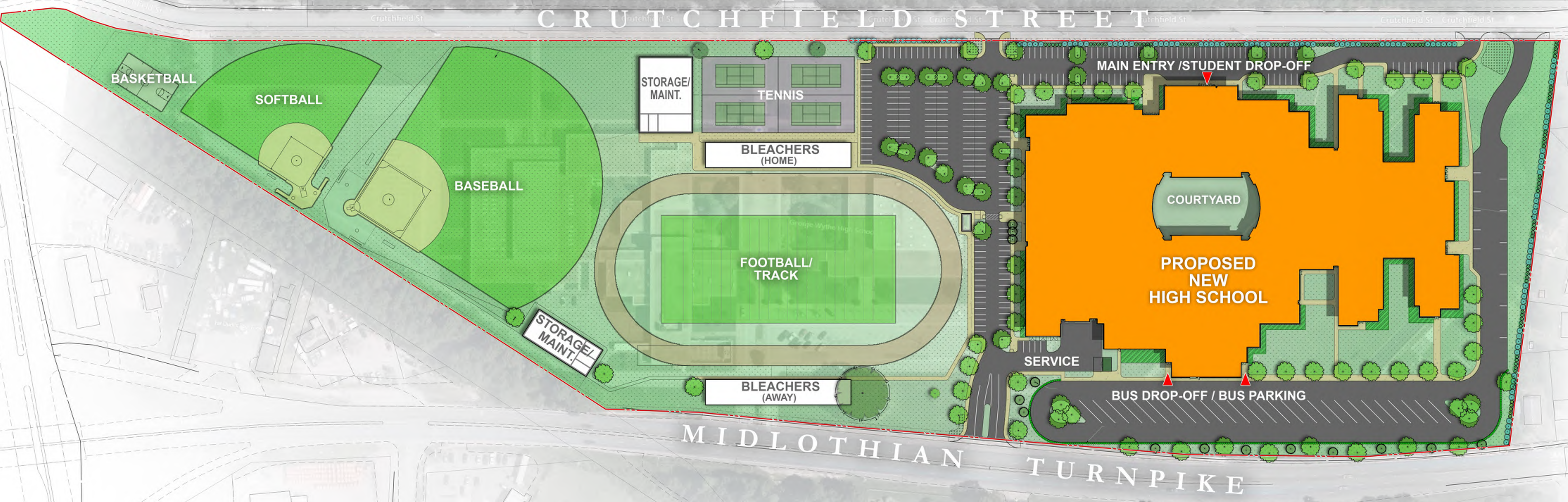


EXISTING SITE PLAN

George Wythe High School
Richmond Public Schools



For Reference Only
See drawn site plan for full detail

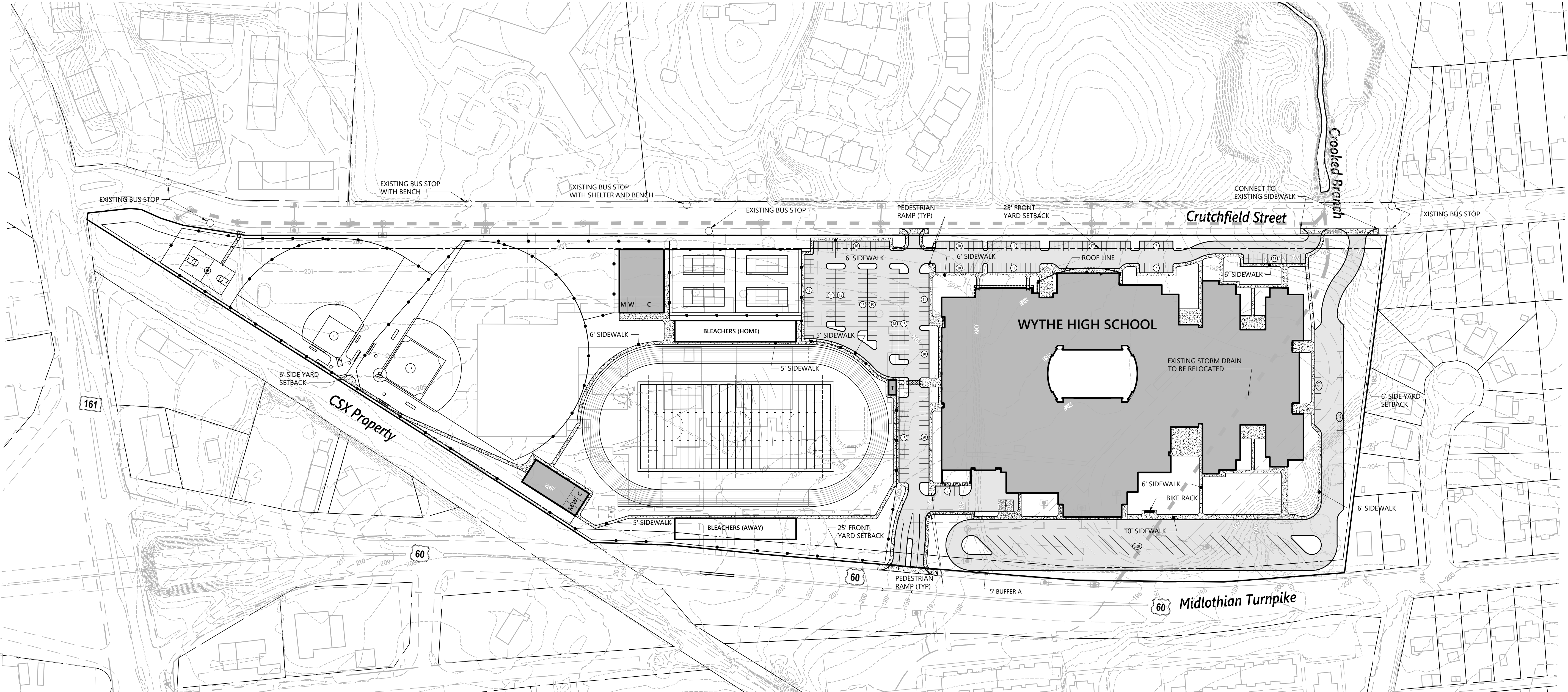


SITE PLAN

George Wythe High School
Richmond Public Schools



PARKING PROVIDED = 270 PARKING SPACES

[illegible]

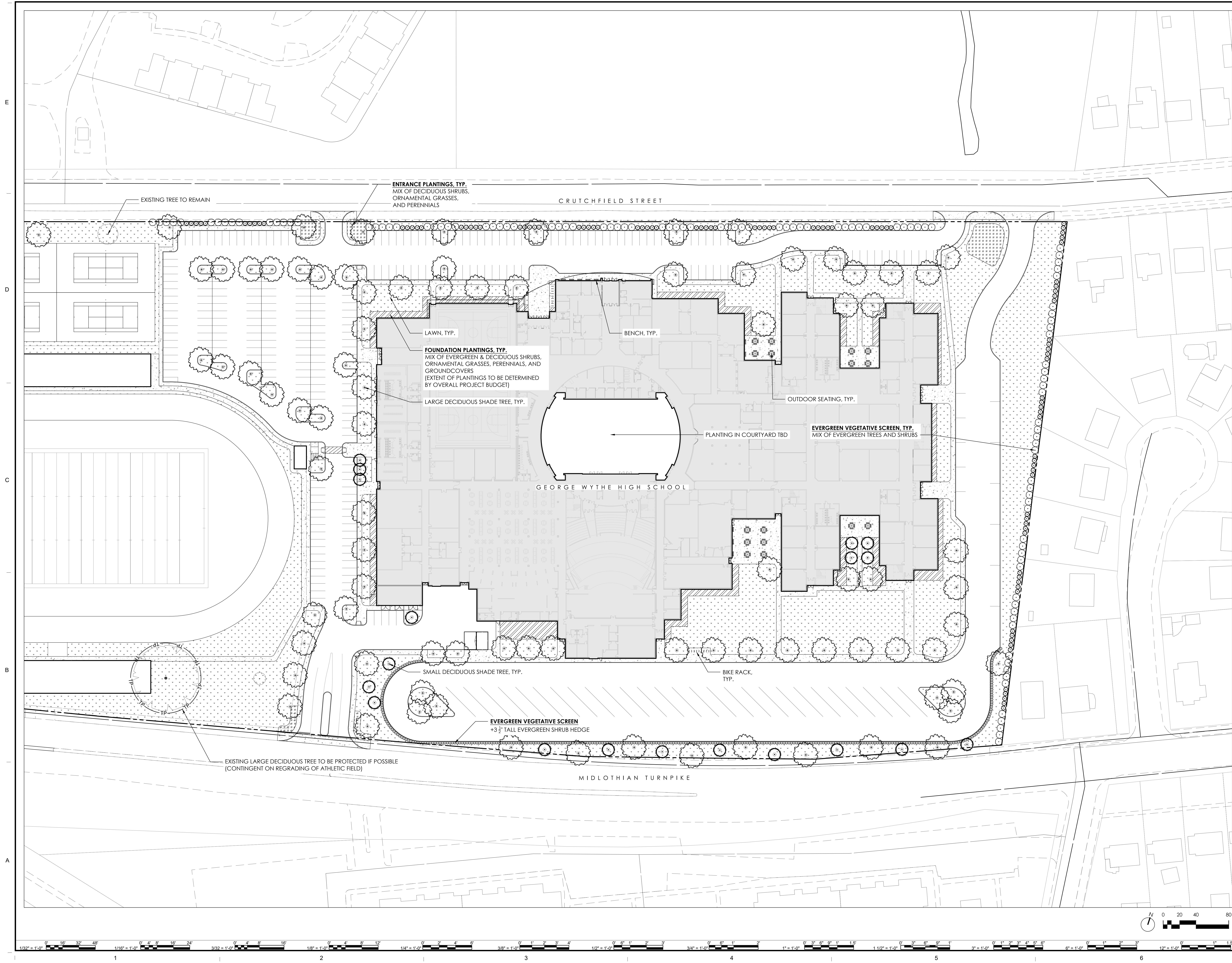
CONCEPTUAL SITE PLAN

C-1

Sheet of

Project Number
34856.00

8/10/2022 4:43:23 PM A:\school Docs\21310-00 George Wythe High School\21310-00-23 George Wythe High School - ARCH.rvt



MARK	DATE	BY	DESCRIPTION

DATE	08/17/2022
PROJECT	21310-00
DESIGNED	JR
DRAWN	JR
CHECKED	KW

RRMM
ARCHITECTS, PC
115 South 15th Street, Suite 202
Richmond, Virginia 23219
(804)277-8987

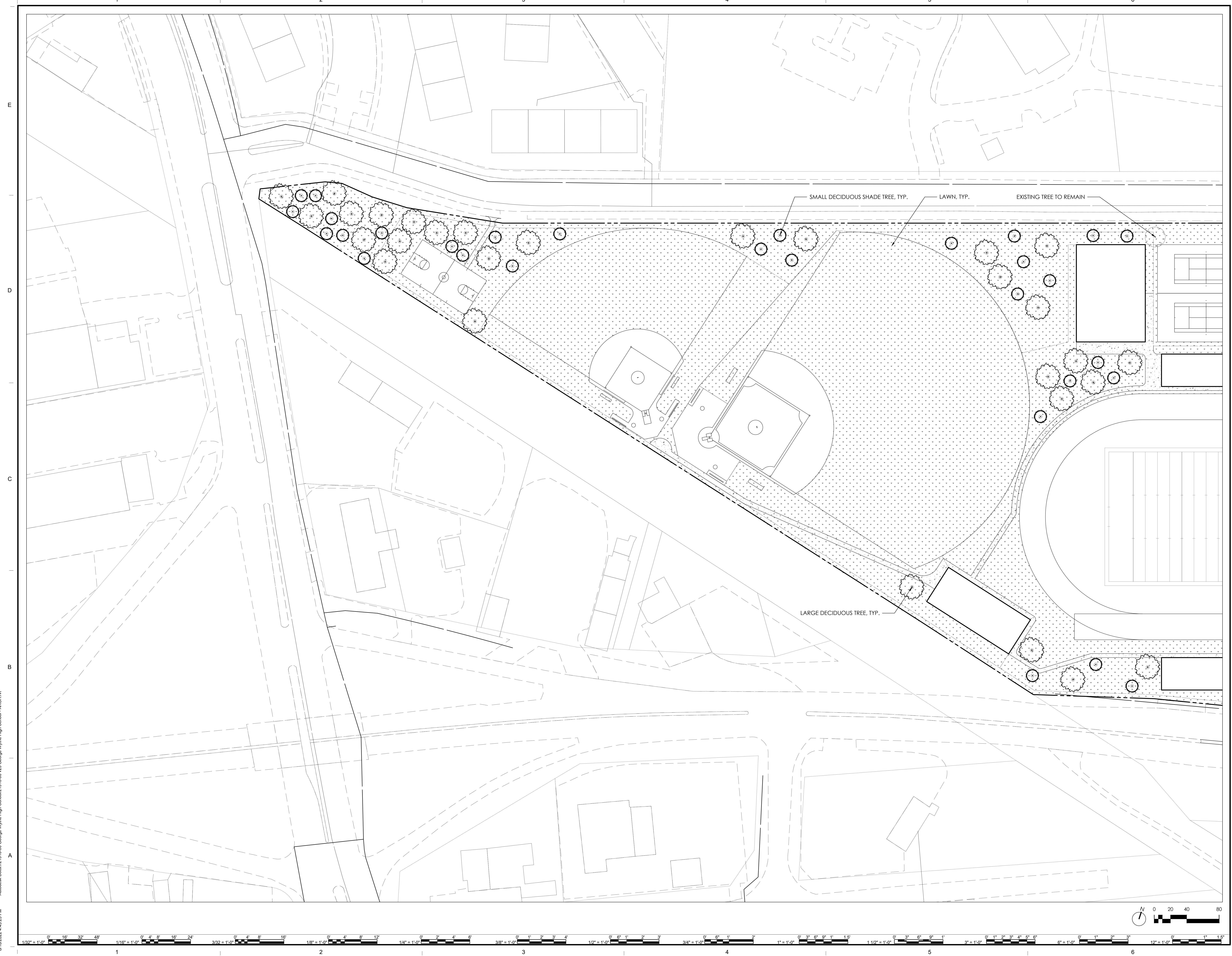


PROJECT RICHMOND PUBLIC SCHOOLS
GEORGE WYTHE HIGH SCHOOL
4314 CRUTCHFIELD STREET
RICHMOND, VIRGINIA 23225

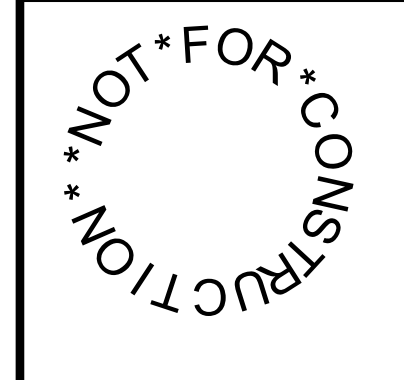
DRAWING PLANTING PLAN

SHEET

L1.01

[illegible]

DATE	08/17/2022
PROJECT	21310-00
DESIGNED	JR
DRAWN	JR
CHECKED	KW



RICHMOND PUBLIC SCHOOLS
GEORGE WYTHE HIGH SCHOOL
4314 CRUTCHFIELD STREET
RICHMOND, VIRGINIA 23225

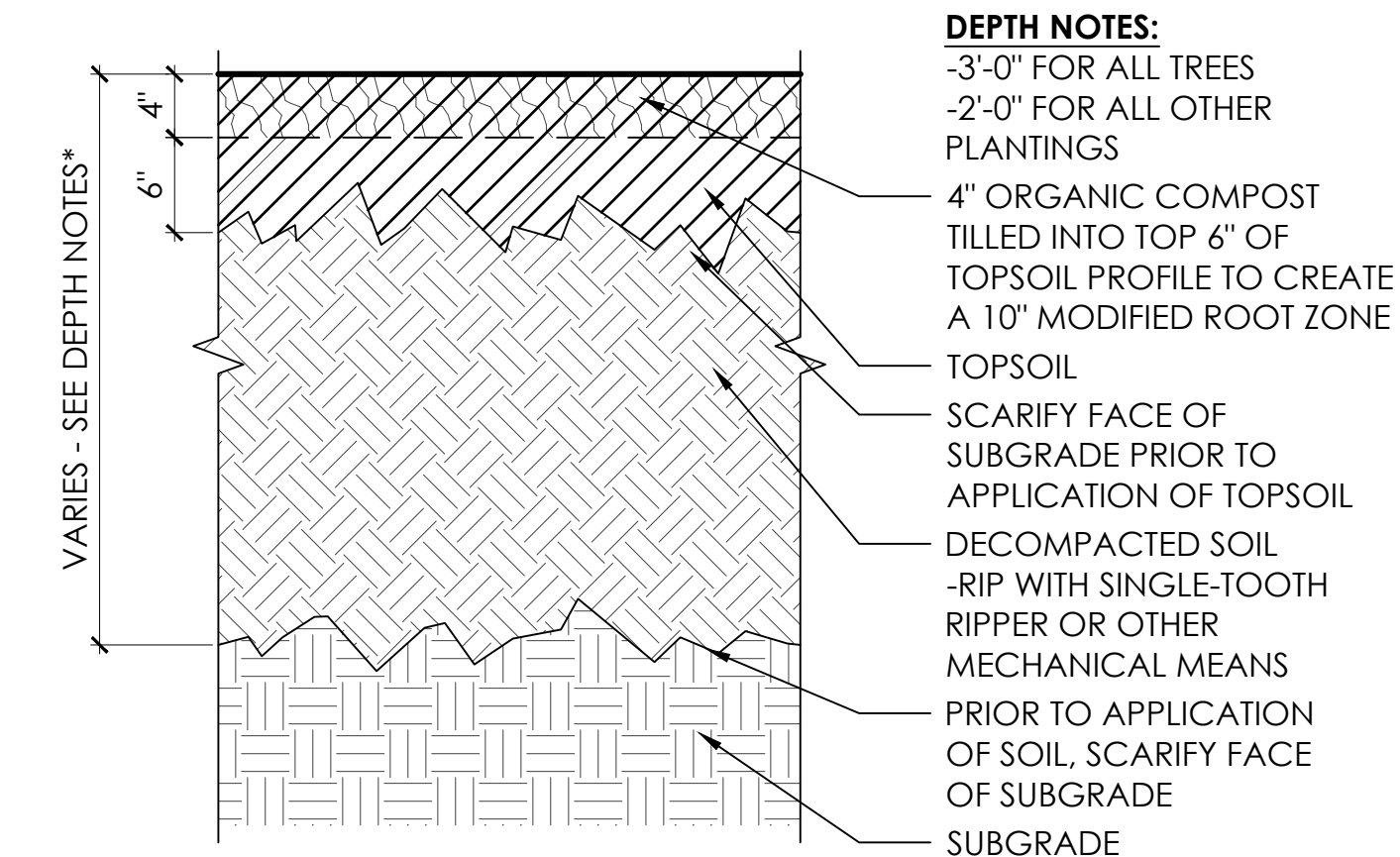
DRAWING

PLANTING PLAN

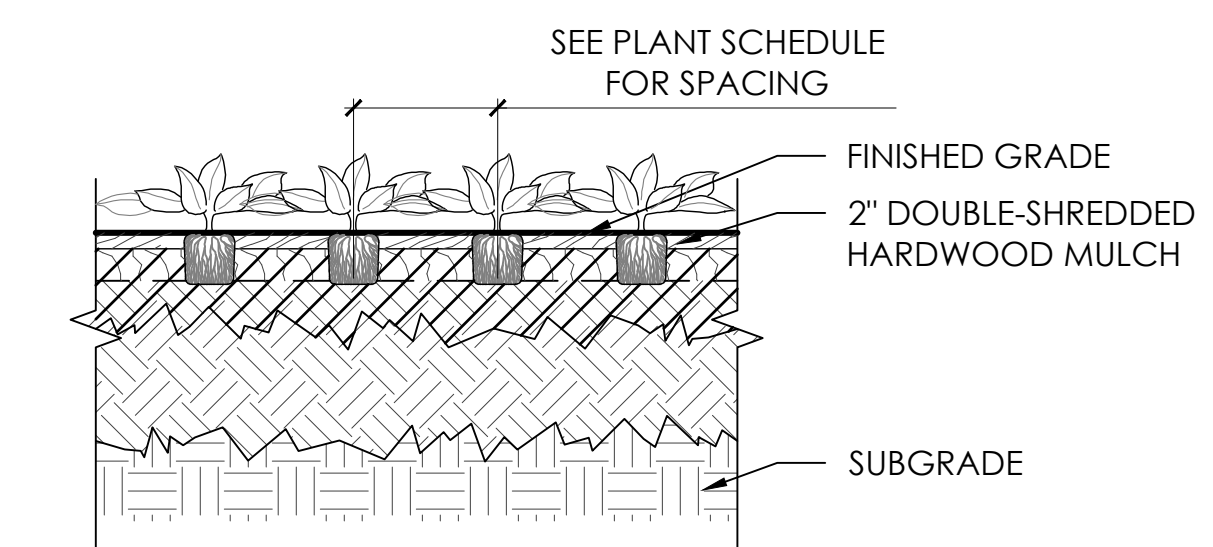
SHEET

L1.02

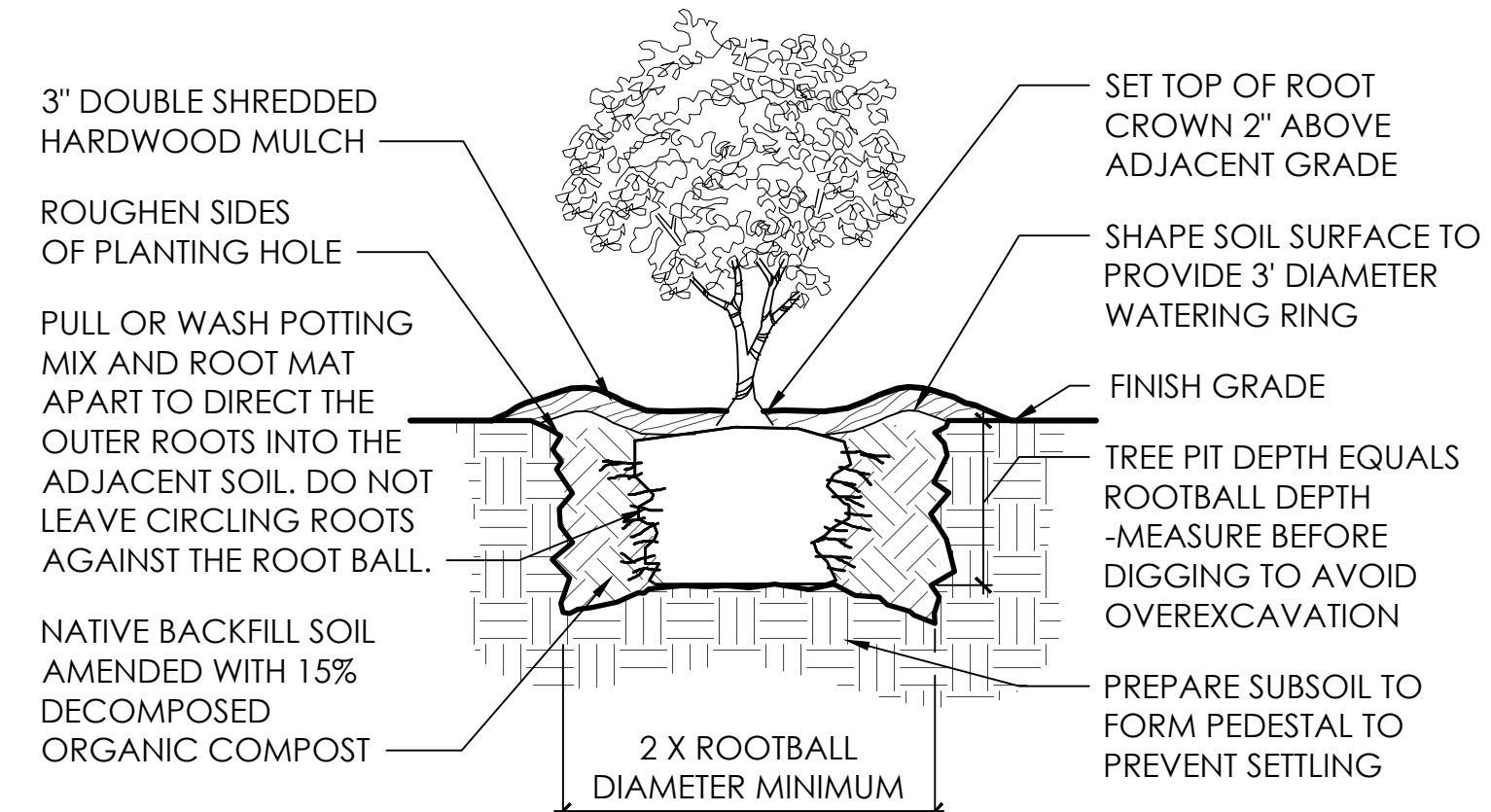
8/10/2022 4:43:23 PM Autodesk Docs://21310.00 George Wythe High School/21310.00 23 George Wythe High School - ARCH.rvt



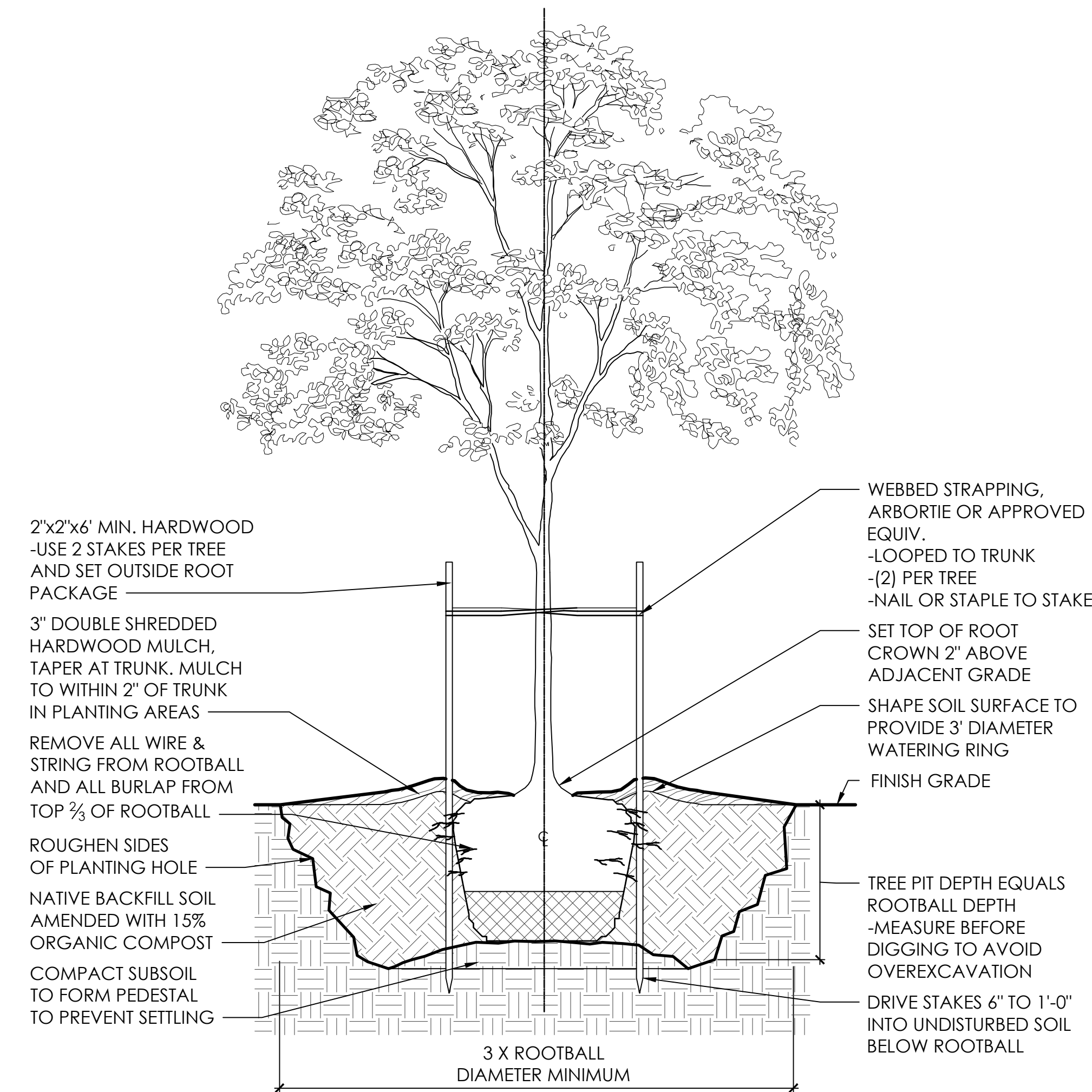
1 SOIL PREPARATION
L3.01 SCALE : NOT TO SCALE



2 PERENNIAL PLANTING
L3.01 SCALE : NOT TO SCALE



3 SHRUB PLANTING
L3.01 SCALE : NOT TO SCALE



4 TREE PLANTING
L3.01 SCALE : NOT TO SCALE

PLANT SCHEDULE

QTY.	SYMBOL	Scientific Name	Common Name	Size	Spacing	Root	Notes
TREES							
116		Deciduous Tree - Large		2 1/2" CAL.	AS SHOWN	8&8	
49		Deciduous Tree - small		3 1/2" CAL.	AS SHOWN	8&8	
111		Evergreen Tree - Small (Vegetative Screen)		4 1/2" CAL.	AS SHOWN	8&8	
ORNAMENTAL GRASSES & SHRUBS							
155		Entrance Plantings - Shrubs		24" Ht.	36" O.C.		
223		Entrance Plantings - Grasses		18" Ht.	30" O.C.		
417		Evergreen Shrubs - Vegetative Screen		42" Ht.	AS SHOWN		
502		Foundation Plantings - Shrubs		24" Ht.	36" O.C.		
723		Foundation Plantings - Grasses		18" Ht.	30" O.C.		
GROUNDCOVERS & PERENNIALS							
621		Entrance Plantings - Perennials			18" O.C.		
2008		Foundation Plantings - Perennials			18" O.C.		

LANDSCAPE CALCULATIONS

TREE COVERAGE REQUIREMENTS

30-710.15
Requirement: 30 S.F. OF 10 YEAR CANOPY PER PARKING SPACE

Parking Spaces	276
Required:	8,280 S.F.
Provided:	9,600 S.F.

PLANTING NOTES

- CONTRACTOR SHALL VERIFY PLANT QUANTITIES SHOWN ON PLAN WITH TOTALS IN PLANTING SCHEDULE. NOTIFY LANDSCAPE ARCHITECT OF ANY DISCREPANCIES PRIOR TO FINAL BIDDING. UNITS PRICES BE SUBMITTED AS PART OF FINAL BID.
- ALL PLANTS SHALL BE GUARANTEED FOR ONE (1) FULL YEAR AND SHALL BE IN A HEALTHY GROWING CONDITION. PLANT MATERIALS WHICH DO NOT FULFILL THIS GUARANTY SHALL BE REPLACED AT NO COST TO THE OWNER. REPLACEMENT SHALL BE GUARANTEED THROUGHOUT THE ORIGINAL GUARANTY PERIOD. PLANTS THAT DIE SHALL BE REPLACED IMMEDIATELY.
- CONTRACTOR IS RESPONSIBLE FOR WATERING, WEEDING, PEST CONTROL, AND FERTILIZATION OF ALL PLANTS UNTIL, a.) UPON FINAL ACCEPTANCE IS ISSUED BY LANDSCAPE ARCHITECT AND/OR OWNER, AND b.) THE CONTRACTOR PROVIDES OWNER WRITTEN NOTIFICATION OF ALL MAINTENANCE NEEDS OF ALL SCOPE ASSOCIATED WITH THE PLANTING PLAN(S) CONTRACT DOCUMENTS.
- CONTRACTOR IS RESPONSIBLE FOR CONTACTING MISS UTILITY PRIOR TO THE BEGINNING OF CONSTRUCTION FOR LOCATION OF ALL UTILITY LINES. TREES SHALL BE LOCATED A MINIMUM OF FIVE (5) FEET FROM SEWER/WATER CONNECTIONS. NOTIFY LANDSCAPE ARCHITECT OF CONFLICTS.
- THE LANDSCAPE ARCHITECT IS THE OWNER'S REPRESENTATIVE AND SHALL BE THE APPROVING AUTHORITY FOR INFORMATION PROVIDED WITHIN THESE PLANS AND SPECIFICATIONS.
- ALL PLANTS, TOPSOIL, MULCH, FERTILIZERS, SOIL AMENDMENTS, PLANTING SUPPLIES, AND METHODS SHALL BE SUBJECT TO LANDSCAPE ARCHITECTS APPROVAL. REJECTED MATERIALS SHALL BE REMOVED FROM THE SITE WITHOUT DELAY AT NO EXPENSE TO THE OWNER.
- CONTRACTOR SHALL LAYOUT AND MARK LOCATION FOR ALL PLANTS, AND IMPROVEMENTS SHOWN AND SHALL REQUEST IN FIELD APPROVAL FROM LANDSCAPE ARCHITECT.
- ALL PLANTS AND PLANTING METHODS SHALL CONFORM TO AMERICAN STANDARD FOR NURSERY STOCK.
- BEDS TO CONTAIN SHRUBS, PERENNIALS, ORNAMENTAL GRASSES, OR PERENNIALS SHALL BE TILLED TO A DEPTH OF 12" AND THE SOIL CONDITIONED BY ADDING 4" OF A U.S. COMPOSTING COUNCIL APPROVED COMPOST.
- ALL PLANTING BED AREAS SHALL BE COVERED WITH A 3" MINIMUM LAYER OF MEDIUM TEXTURED SHREDDED HARDWOOD MULCH UNLESS OTHERWISE NOTED.
- ALL SUBSTITUTIONS OF PLANTS SHALL BE REQUESTED IN WRITING TO THE LANDSCAPE ARCHITECT AND APPROVED IN WRITING BY THE OWNER OR THE OWNER'S REPRESENTATIVE.
- ALL PLANTING OPERATIONS SHALL BE UNDER THE SUPERVISION OF AN EXPERIENCED PLANTSMAN.
- LANDSCAPE ARCHITECT RESERVES THE RIGHT TO SELECT PLANTS IN THE NURSERY.
- FOR TREES BALLED IN WIRE BASKETS, CUT AND REMOVE TOP AND SIDES OF BASKET AFTER INSTALLATION.
- LANDSCAPE ARCHITECT RESERVES THE RIGHT TO REJECT AND PLANTS AND MATERIALS THAT ARE IN AN UNHEALTHY OR UNSIGHTLY CONDITION, AS WELL AS PLANTS AND MATERIALS THAT DO NOT CONFORM TO A.A.N. STANDARDS.
- SOIL SHALL BE FREE OR ALL WEEDS AND ROCKS GREATER THAN 1" IN DIAMETER.
- PLANT SIZES, QUANTITIES, AND SPECIES WILL BE CHECKED BY MUNICIPALITY INSPECTION FOR COMPLIANCE WITH PLANT SCHEDULE AS APPROVED BY THE MUNICIPALITY. CONTRACTOR SHALL BE HELD RESPONSIBLE FOR DELAY IN ISSUANCE OF CERTIFICATE OF OCCUPANCY BY THE MUNICIPALITY RESULTING FROM UNAUTHORIZED SUBSTITUTIONS OR DOWNSIZING.
- UPON COMPLETION OF LANDSCAPE INSTALLATION, THE LANDSCAPE CONTRACTOR SHALL NOTIFY THE GENERAL CONTRACTOR WHO WILL VERIFY COMPLETENESS, INCLUDING THE REPLACEMENT OF ALL DEAD PLANT MATERIAL, AND SCHEDULE A FINAL INSPECTION FOR ACCEPTANCE BY OWNER.
- CONTRACTOR SHALL REMOVE TREE STAKING AT THE END OF THE ONE YEAR WARRANTY PERIOD.
- CONTACT D.P.R. PRIOR TO PLANTING ALL TREES ON SITE TO REVIEW EXCAVATION, PLANTING MEDIA, AND INSTALLED PLANTING STOCK.
- ALL PEST CONTROL SHALL BE UNDER THE DIRECTION OF A VIRGINIA LICENSED APPLICATOR.

DESCRIPTION	BY	DATE
MARK	DATE	REVISIONS

DATE	08/17/2022	PROJECT	21310-00	JR	JR	KW
DESIGNED		DRAWN			CHECKED	

RRMM
ARCHITECTS, PC
115 South 15th Street, Suite 202
Richmond, Virginia 23219
(804)277-8987



PROJECT RICHMOND PUBLIC SCHOOLS
GEORGE WYTHE HIGH SCHOOL
4314 CRUTCHFIELD STREET
RICHMOND, VIRGINIA 23225
DRAWING PLANTING NOTES AND DETAILS

SHEET
L3.01