

INTRODUCED: May 9, 2022

AN ORDINANCE No. 2022-133

To repeal City Code § 9-69, concerning Precinct 203; to amend City Code §§ 9-66, 9-70, 9-73, 9-74, 9-75, 9-76, 9-80, 9-81, 9-82, 9-83, 9-87, 9-88, 9-97, 9-98, 9-102, 9-103, 9-106, 9-107, 9-112, 9-114, 9-115, and 9-128; and to amend ch. 9, art. III of the City Code by adding therein new sections 9-76.1, 9-86.1, 9-108.1, and 9-115.1, all concerning election precinct boundary descriptions for the purpose of establishing new election precinct boundaries.

Patrons – All Members of Council

Approved as to form and legality
by the City Attorney

PUBLIC HEARING: MAY 23 2022 AT 6 P.M.

THE CITY OF RICHMOND HEREBY ORDAINS:

§ 1. That section 9-69 of the Code of the City of Richmond (2020) be and hereby is **repealed** as follows:

~~[Sec. 9-69. Precinct 203.~~

~~Election Precinct 203 shall be described as follows:~~

~~Beginning at the intersection of the 1970 corporation line and the centerline of West Laburnum Avenue; thence in an eastward direction along the centerline of West Laburnum Avenue to its intersection with the centerline of Gloucester Road; thence in a southward~~

AYES: 8 NOES: 0 ABSTAIN: _____

ADOPTED: MAY 23 2022 REJECTED: _____ STRICKEN: _____

~~direction along the centerline of Gloucester Road to its intersection with the centerline of Westwood Avenue; thence in an eastward direction along the centerline of Westwood Avenue to its intersection with the centerline of Brook Road; thence in a southward direction along the centerline of Brook Road to its intersection with the centerline of Sherwood Avenue; thence in a westward direction along the centerline of Sherwood Avenue to its intersection with the centerline of I-95; thence in a northwestward direction along the centerline of I-95 to its intersection with the centerline of Westwood Avenue; thence in a westward direction along the centerline of Westwood Avenue to its intersection with the 1970 corporation line; thence northward along the 1970 corporation line to its intersection with the centerline of West Laburnum Avenue, the point of beginning.]~~

§ 2. That sections 9-66, 9-70, 9-73, 9-74, 9-75, 9-76, 9-80, 9-81, 9-82, 9-83, 9-87, 9-88, 9-97, 9-98, 9-102, 9-103, 9-106, 9-107, 9-112, 9-114, 9-115, and 9-128 of the Code of the City of Richmond (2020) be and are hereby **amended** as follows:

Sec. 9-66. Precinct 113.

Election Precinct 113 shall be described as follows:

Beginning at the intersection of the centerline of the CSX Railroad with the centerline of West Broad Street; thence along the centerline of West Broad Street in an eastward direction to its intersection with the centerline of ~~[Cleveland Street]~~ North Arthur Ashe Boulevard; thence along the centerline of ~~[Cleveland Street]~~ North Arthur Ashe Boulevard in a southward direction to its intersection with the centerline of ~~[Monument Avenue;~~ thence along the centerline of Monument Avenue in an eastward direction to its intersection with the centerline of North Boulevard; thence along the centerline of North Boulevard in a southward direction to its intersection with the centerline of] Kensington Avenue; thence along the centerline of

Kensington Avenue in a westward direction to its intersection with the centerline of Patterson Avenue; thence along the centerline of Patterson Avenue in a westward direction to its intersection with the centerline of the CSX Railroad; thence along the centerline of the CSX Railroad in a northward direction to its intersection with the centerline of West Broad Street, the point of beginning.

Sec. 9-70. Precinct 204.

Election Precinct 204 shall be described as follows:

Beginning at the intersection of Stuart Circle and Park Avenue; thence along the centerline of Park Avenue in a westward direction to its intersection with the centerline of North Arthur Ashe Boulevard; thence along the centerline of North Arthur Ashe Boulevard in a northward direction to its intersection with the westbound lane of Monument Avenue; thence along the westbound lane of Monument Avenue in a westward direction to its intersection with the centerline of [~~Cleveland Street~~] North Arthur Ashe Boulevard; thence along the centerline of [~~Cleveland Street~~] North Arthur Ashe Boulevard in a northward direction to its intersection with the eastbound lane of West Broad Street; thence along the eastbound lane of West Broad Street in an eastward direction to its intersection with the centerline of Lodge Street; thence along the centerline of Lodge Street in a northward direction to its intersection with the westbound lane of West Broad Street; thence along the westbound lane of West Broad Street in an eastward direction to its intersection with the centerline of North Lombardy Street; thence along the centerline of North Lombardy Street in a southward direction to the point at which it become Stuart Circle; thence along the centerline of Stuart Circle in a southward direction to its intersection with the centerline of Park Avenue, the point of beginning.

Sec. 9-73. Precinct 208.

Election Precinct 208 shall be described as follows:

Beginning at the intersection of North Harrison Street and Park Avenue; thence in a westward direction along the centerline of Park Avenue to its intersection with the centerline of North Shields Avenue; thence in a southward direction along the centerline of North Shields Avenue to its intersection with the centerline of ~~[Floyd Avenue]~~ West Main Street; thence in an eastward direction along the centerline of ~~[Floyd Avenue]~~ West Main Street to its intersection with the centerline of North Harrison Street; thence in a northward direction along the centerline of North Harrison Street to its intersection with the centerline of Park Avenue, the point of beginning.

Sec. 9-74. Precinct 213.

Election Precinct 213 shall be described as follows:

Beginning at the centerline of I-64 and I-95 and North Lombardy Street; thence in a southward direction along the centerline of North Lombardy Street to its intersection with the ~~[eastbound lane of West Broad Street]~~ centerline of West Moore Street; thence in an eastward direction along the ~~[eastbound lane of West Broad]~~ centerline of West Moore Street to ~~[the point at which it becomes the eastbound lane of East Broad]~~ its intersection with the centerline of Bowe Street; thence in ~~[an eastward direction along the eastbound lane of East Broad Street to its intersection with the centerline of North 2nd Street]~~ a southward direction along the centerline of Bowe Street to its intersection with the centerline of West Leigh Street; thence in a westward direction along the centerline of West Leigh Street to its intersection with the centerline of Kinney Street; thence in a northward direction along the centerline of Kinney Street to its intersection with the centerline of West Moore Street; thence in a westward

direction along the centerline of West Moore Street to its intersection with the centerline of North Harrison Street; thence in a southward direction along the centerline of North Harrison Street to its intersection with the eastbound lane of West Broad Street; thence in an eastward direction along the eastbound lane of West Broad Street to its intersection with the centerline of North 2nd Street; thence in a northward direction along the centerline of North 2nd Street to its intersection with the centerline of East Duval Street; thence in a westward direction along the centerline of East Duval Street to its intersection with the centerline of North 1st Street; thence in a northward direction along the centerline of North 1st Street to its intersection with the eastbound lane of I-64 and I-95; thence in a westward direction along the eastbound lane of I-64 and I-95 to its intersection with the centerline of North Lombardy Street, the point of beginning.

Sec. 9-75. Precinct 214.

Election precinct 214 shall be described as follows:

Beginning at the intersection of the centerlines of North Harrison Street and ~~[Floyd Avenue]~~ West Main Street; thence in an eastward direction along the centerline of ~~[Floyd Avenue]~~ West Main Street to the point at which ~~[it]~~ South Foushee Street becomes ~~[South Cathedral Place]~~ East Main Street; thence in an eastward direction along ~~[the centerline of South Cathedral Place to its intersection with North Laurel Street; thence in a southward direction along the centerline of North Laurel Street to its intersection with the centerline of West Main Street; thence in an eastward direction along the centerline of West Main Street to its intersection with the northbound lane of South Belvidere Street; thence in a southward direction along the northbound lane of South Belvidere Street to its intersection with the centerline of West Canal Street; thence in an eastward direction along the centerline of West~~

~~Canal Street to its intersection with the centerline of South Adams Street; thence in a northward direction along the centerline of South Adams Street to the point at which it becomes North Adams Street]~~ East Main Street to its intersection with South Second Street; thence in a northward direction along the centerline of ~~[North Adams]~~ South Second Street to its intersection with the eastbound lane of West Broad Street; thence in a westward direction along the eastbound lane of West Broad Street to its intersection with the centerline of North Harrison Street; thence in a southward direction along the centerline of North Harrison Street to its intersection with the centerline of ~~[Floyd Avenue]~~ West Main Street, the point of beginning.

Sec. 9-76. Precinct 215.

Election Precinct 215 shall be described as follows:

Beginning at the intersection of the 1970 corporation line and the centerline of Westwood Avenue; thence in ~~[an eastward direction along the centerline of Westwood Avenue to its intersection with the centerline of I-95; thence in a southward direction along the centerline of I-95 to its intersection with the centerline of Overbrook Road; thence in a westward direction along the centerline of Overbrook Road to its intersection with the centerline of Hermitage Road; thence in a southward direction along the centerline of Hermitage Road to the point at which it becomes North Meadow Street]~~ a northward direction alongside the CSX Railroad to its intersection with the centerline of West Laburnum Avenue; thence in a westward direction along the eastbound side of West Laburnum Avenue to its intersection with the northbound lane of I-95; thence is a southward direction along the northbound side of I-95 to its intersection with the centerline of Hermitage Road. Thence in a southward direction along the centerline of Hermitage Road to the point at which it becomes North

Meadow Street; thence in a southward direction along the centerline of North Meadow Street to its intersection with West Broad Street; thence in a westward direction along the centerline of West Broad Street to its intersection with Westwood Avenue; thence in a northward direction along the centerline of Westwood Avenue to its intersection with the 1970 corporation line; thence northward along the 1970 corporation line to its intersection with the centerline of Westwood Avenue, the point of beginning.

Sec. 9-80. Precinct 304.

Election Precinct 304 shall be described as follows:

Beginning at the intersection of the 1970 corporation line and Meadowbridge Road; thence in a southward direction along the centerline of Meadowbridge Road to its intersection with the centerline of Bancroft Avenue; thence in a westward direction along the centerline of Bancroft Avenue to its intersection with the centerline of Richmond-Henrico Turnpike; thence in a southward direction along the centerline of Richmond-Henrico Turnpike to its intersection with the centerline of ~~[the Ravine]~~ Dove Street; thence in a westward direction along the centerline of ~~[the Ravine]~~ Dove Street to its intersection with the centerline of ~~[East Lancaster Road extended]~~ North Avenue; ~~[thence in a westward direction along the centerline of East Lancaster Road extended to its intersection with the centerline of Lamb Avenue; thence in a northward direction along the centerline of Lamb Avenue to its intersection with the centerline of East Norwood Avenue; thence in an eastward direction along the centerline of East Norwood Avenue to its intersection with the census block boundary; thence in a northward direction along the census block boundary to its intersection with the centerline of East Hooper Street; thence in a westward direction along the centerline of East Hooper Street to its intersection with the centerline of North Avenue;]~~ thence in a northward direction along

the centerline of North Avenue to its intersection with the centerline of Pilots Lane; thence in a northward direction along the centerline of Pilots Lane to its intersection with the 1970 corporation line; thence in a generally eastward direction along the centerline of the 1970 corporation line to its intersection with the centerline of Meadowbridge Road, the point of beginning.

Sec. 9-81. Precinct 305.

Election Precinct 305 shall be described as follows:

Beginning at the intersection of the centerlines of Brookland Park Boulevard and North Avenue; thence in a southward direction along the centerline of North Avenue to its intersection with the centerline of [~~West Hooper~~] Wickham Street; thence in a westward direction along the centerline of [~~West Hooper~~] Wickham Street to its intersection with the centerline of [~~Fendall Avenue~~] Miller Avenue; thence in a southward direction along the centerline of [~~Fendall Avenue~~] Miller Avenue to its intersection with the centerline of [~~Overbrook Road~~] Yancey Street; thence in an eastward direction along the centerline of [~~Overbrook Road to its intersection with the centerline of Miller Avenue; thence in a southward direction along the centerline of Miller Avenue to its intersection with the centerline of Yancey Street; thence in an eastward direction along the centerline of~~] Yancey Street to its intersection with the centerline of Rose Avenue; thence in a southward direction along the centerline of Rose Avenue to its intersection with the centerline of Fells Street; thence in an eastward direction along the centerline of Fells Street to its intersection with the centerline of St. James Street; thence in a southward direction along the centerline of St. James Street to its intersection with the centerline of the CSX Railroad; thence in a westward direction along the centerline of the CSX Railroad to its intersection with the centerline of

North Belvidere Street; thence in a northward direction along the centerline of North Belvidere Street to its intersection with the centerline of Chamberlayne Avenue; thence in a northward direction along the centerline of Chamberlayne Avenue to its intersection with the centerline of Brookland Park Boulevard; thence in an eastward direction along the centerline of Brookland Park Boulevard to its intersection with the centerline of North Avenue, the point of beginning.

Sec. 9-82. Precinct 306.

Election Precinct 306 shall be described as follows:

Beginning at the intersection of the centerlines of Brookland Park Boulevard and Chamberlayne Avenue; thence in a southward direction along the centerline of Chamberlayne Avenue to the point at which it becomes North Belvidere Street; thence in a southward direction along the centerline of North Belvidere Street to its intersection with the centerline of I-95; thence in a westward and northward direction along the centerline of I-95 to its intersection with the centerline of ~~[North Lombardy Street]~~ Sherwood Avenue; thence in ~~[a southward direction along the centerline of North Lombardy Street to its intersection with the westbound lane of West Broad Street; thence in a westward direction along the westbound lane of West Broad Street to its intersection with the centerline of Lodge Street; thence in a southward direction along the centerline of Lodge Street to its intersection with the eastbound lane of West Broad Street; thence in a westward direction along the eastbound lane of West Broad Street to its intersection with the southbound lane of North Meadow Street; thence in a northward direction along the southbound lane of North Meadow Street to the point at which it becomes Hermitage Road; thence in a northward direction along the southbound lane of Hermitage Road to its intersection with the centerline of Overbrook Road; thence in an~~

~~eastward direction along the centerline of Overbrook Road to its intersection with the southbound lane of I-95; thence in a northward direction along the southbound lane of I-95 to its intersection with Sherwood Avenue; thence in]~~ an eastward direction along the centerline of Sherwood Avenue to its intersection with the southbound lane of Brook Road; thence in a northward direction along the southbound lane of Brook Road to its intersection with the centerline of Brookland Park Boulevard; thence in an eastward direction along the centerline of Brookland Park Boulevard to its intersection with the centerline of Chamberlayne Avenue, the point of beginning.

Sec. 9-83. Precinct 307.

Election Precinct 307 shall be described as follows:

Beginning at the intersection of the centerline of Claremont Avenue and the northbound lane of Chamberlayne Avenue; thence in a southward direction along the northbound lane of Chamberlayne Avenue to its intersection with the centerline of Brookland Park Boulevard; thence in a westward direction along the centerline of Brookland Park Boulevard to its intersection with the southbound lane of Brook Road; thence in a ~~[northward]~~ southward direction along the southbound lane of Brook Road to its intersection with the centerline of ~~[Westwood]~~ Sherwood Avenue; thence in a westward direction along the centerline of ~~[Westwood]~~ Sherwood Avenue to its intersection with I-95; thence in a northward direction along I-95 to its intersection with the centerline of ~~[Gloucester Road; thence in a direction along the centerline of to its intersection with the westbound lane of]~~ West Laburnum Avenue; thence in a westward direction along the westbound lane of West Laburnum Avenue to its intersection with the centerline of ~~[Chatham Road; thence in a southward direction along the centerline of Chatham Road to its intersection with the eastbound lane of West Laburnum~~

~~Avenue; thence in a westward direction along the eastbound lane of West Laburnum Avenue to its intersection with the centerline of] Monticello Street; thence in a northward direction along the centerline of Monticello Street to its intersection with the centerline of Nottoway Avenue; thence in an eastward direction along the centerline of Nottoway Avenue to its intersection with the centerline of [MacArthur Avenue; thence in a southward direction along the centerline of MacArthur Avenue to its intersection with the centerline of Nottoway Avenue; thence in an eastward direction along the centerline of Nottoway Avenue to its intersection with the centerline of] Brook Road; thence in a southward direction along the centerline of Brook Road to its intersection with the centerline of Claremont Avenue; thence in an eastward direction along the centerline of Claremont Avenue to its intersection with the northbound lane of Chamberlayne Avenue, the point of beginning.~~

Sec. 9-87. Precinct 402.

Election Precinct 402 shall be described as follows:

Beginning at the intersection of the centerlines of the James River and Reedy Creek projected; thence in a southward direction along the centerline of the projection of Reedy Creek and the centerline of Reedy Creek to its intersection with the centerline of Forest Hill Avenue; thence in a westward direction along the centerline of Forest Hill Avenue to its intersection with the centerline of West Roanoke Street; thence in a southward direction along the centerline of West Roanoke Street to its intersection with the centerline of Dunston Avenue; thence in a westward direction along the centerline of Dunston Avenue to its intersection with the centerline of Reedy Creek; thence in a westward direction along the centerline of Reedy Creek to its intersection with the centerline of West 44th Street; thence in a northward direction along the centerline of West 44th Street to its intersection with the centerline of Reedy

Avenue; thence in a westward direction along the centerline of Reedy Avenue to its intersection with the centerline of West 45th Street; thence in a southward direction along the centerline of West 45th Street and West 45th Street extended to its intersection with the centerline of Bassett Avenue; thence in a westward direction along the centerline of Bassett Avenue to its intersection with the centerline of Westover Hills Boulevard; thence in a northward direction along the centerline of Westover Hills Boulevard to its intersection with the centerline of West 49th Street; thence in a westward direction along the centerline of West 49th Street to its intersection with the centerline of Westover Hills Boulevard; thence in a northward direction along the centerline of Westover Hills Boulevard to its intersection with the centerline of Forest Hill Avenue; thence in a westward direction along the centerline of Forest Hill Avenue to its intersection with the ~~[CSX Railroad]~~ centerline of Powhite Parkway; thence in a northward direction along the centerline of ~~[the CSX Railroad]~~ Powhite Parkway to its intersection with the centerline of the James River; thence in an eastward direction along the centerline of the James River to its intersection with the projection of the centerline of Reedy Creek, the point of beginning.

Sec. 9-88. Precinct 404.

Election Precinct 404 shall be described as follows:

Beginning at the intersection of ~~[the Powhite Parkway]~~ Bliley Road and Forest Hill Avenue; ~~[thence in a westward direction along the centerline of Forest Hill Avenue to its intersection with the centerline of Bliley Road;]~~ thence in a westward direction along the centerline of Bliley Road to its intersection with the centerline of Whitlone Drive; thence in a southward direction along the centerline of Whitlone Drive to its intersection with the centerline of Westtower Drive; thence in a westward direction along the centerline of Westtower Drive to

its intersection with the centerline of Blakemore Road; thence in a southward direction along the centerline of Blakemore Road to its intersection with the centerline of Glenway Drive to its intersection with the centerline of Blandy Avenue; thence in a southward direction along the centerline of Blandy Avenue to its intersection with the centerline of Wainwright Drive; thence in a southeastward direction along the centerline of Wainwright Drive to its intersection with the centerline of Bradley Lane; thence in a northward direction along the centerline of Bradley Lane to its intersection with the centerline of Spruance Road; thence in a northward direction along the centerline of Spruance Road to its intersection with the centerline of Jahnke Road; thence in an eastward direction along the centerline of Jahnke Road to its intersection with the centerline of Byswick Lane; thence in a northward direction along the centerline of Byswick Lane to its intersection with the centerline of Reedy Avenue; thence in an eastward direction along the centerline of Reedy Avenue to its intersection with the centerline of Boroughbridge Road; thence in a southward direction along the centerline of Boroughbridge Road to its intersection with the centerline of Bassett Avenue; thence in an eastward direction along the centerline of Bassett Avenue to its intersection with the centerline of Westover Hills Boulevard; thence in a northward direction along the centerline of Westover Hills Boulevard to its intersection with the centerline of Dunston Avenue; thence in a westward direction along the centerline of Dunston Avenue to its intersection with the centerline of West 49th Street; thence in a northward direction along the centerline of West 49th Street to its intersection with the centerline of Westover Hills Boulevard; thence in a northward direction along the centerline of Westover Hills Boulevard to its intersection with the centerline of Forest Hill Avenue; thence in a westward direction along the centerline of Forest Hill Avenue to its intersection with the centerline of [~~the CSX Railroad;~~] Bliley Road

~~[thence in a northward direction along the centerline of the CSX Railroad to its intersection with the centerline of the James River; thence in a westward direction along the centerline of the James River to its intersection with the centerline of the Powhite Parkway; thence in a westward direction along the centerline of the Powhite Parkway to its intersection with the centerline of Forest Hill Avenue], the point of beginning.~~

Sec. 9-97. Precinct 504.

Election Precinct 504 shall be described as follows:

Beginning at the intersection of the centerlines of ~~[Floyd Avenue]~~ West Main Street and North Harrison Street; thence in a southward direction along the centerline of North Harrison Street and South Harrison Street to its intersection with the centerline of Lakeview Avenue; thence in a westward direction along the centerline of Lakeview Avenue to its intersection with the centerline of South Shields Avenue; thence in a northward direction along the centerline of South Shields Avenue and Shields Avenue extended to its intersection with the centerline of the Downtown Expressway; thence in a westward direction along the centerline of the Downtown Expressway to its intersection with the centerline of South Robinson Street; thence in a northward direction along the centerline of South Robinson Street to its intersection with the centerline of West Main Street; thence in an eastward direction along the centerline of West Main Street to its intersection with the centerline of ~~[South Shields Avenue; thence in an northward direction along the centerline of South Shields Avenue and North Shields Avenue to its intersection with the centerline of Floyd Avenue; thence in an eastward direction along the centerline of Floyd Avenue to its intersection with the centerline of]~~ North Harrison Street, the point of beginning.

Sec. 9-98. Precinct 505.

Election Precinct 505 shall be described as follows:

Beginning at the intersection of South ~~[Belvidere]~~ 2nd Street and ~~[West]~~ East Main Street; thence in a westward direction along the centerline of ~~[West]~~ East Main Street to its intersection with the centerline of North ~~[Laurel]~~ Harrison Street; thence in a ~~[northward direction along the centerline of North Laurel Street to its intersection with the centerline of South Cathedral Place; thence in a westward direction along the centerline of South Cathedral Place to the point at which it becomes Floyd Avenue; thence in a westward direction along the centerline of Floyd Avenue to its intersection with the centerline of North Harrison Street; thence in a]~~ southwestward direction along the centerline of North Harrison Street to the point at which it becomes South Harrison Street; thence in a southward direction along the centerline of South Harrison Street to its intersection with the centerline of Colorado Avenue; thence in a westward direction along the centerline of Colorado Avenue to its intersection with the centerline of Southampton Avenue extended; thence in a southward direction along the centerline of Southampton Avenue and Southampton Avenue extended to its intersection with the centerline of the James River; thence in an eastward direction along the centerline of the James River to its intersection with the centerline of the Robert E. Lee Bridge; thence in a northward direction along the centerline of the Robert E. Lee Bridge to its intersection with the centerline of South 2nd Street; thence in a northward direction along the centerline of South 2nd Street to its intersection with ~~[the westbound lane of the Downtown Expressway; thence in a westward direction along the westbound lane of the Downtown Expressway to its intersection with the northbound lane South Belvidere Street; thence in a northward direction~~

~~along the northbound lane of South Belvidere Street to its intersection with the centerline of West Main Street]~~ East Main Street, the point of beginning.

Sec. 9-102. Precinct 602.

Election Precinct 602 shall be described as follows:

Beginning at the intersection of the centerlines of I-64 and the 1970 corporation line; thence in a southward direction along the 1970 corporation line to its intersection with the centerline of Carroll Street; thence in a westward direction along the centerline of Carroll Street to its intersection with the centerline of Mechanicsville Turnpike; thence in a southward direction along the centerline of Mechanicsville Turnpike to its intersection with the centerline of Mosby Street; thence in a southward direction along the centerline of Mosby Street to its intersection with the centerline of ~~[the Leigh]~~ Venable Street ~~[Viaduct]~~; thence in a westward direction along the centerline of ~~[the Leigh]~~ Venable Street ~~[Viaduct]~~ to its intersection with the ~~[southbound lane of I-95]~~ centerline of Oliver Hill Way; thence in a northwestward direction along the ~~[southbound lane of I-95]~~ centerline of Oliver Hill Way to its intersection with the Leigh Street Viaduct; thence in a westward direction along the Leigh Street Viaduct to its intersection with the southbound lane of I-95; thence in northwestward direction along the southbound lane of I-95 to its intersection with the centerline of I-64; thence in a northeastward direction along the centerline of I-64 to its intersection with the centerline of North 7th Street; thence in a northward direction along the centerline of North 7th Street to its intersection with the centerline of Hospital Street; thence in a westward direction along the centerline of Hospital Street to its intersection with the centerline of I-64; thence in a northward, then eastward direction along the centerline of I-64 to its intersection with the 1970 corporation line, the point of beginning.

Sec. 9-103. Precinct 603.

Election Precinct 603 shall be described as follows:

Beginning at the intersection of the centerlines of East Brookland Park Boulevard and Second Avenue; thence in a southward direction along the centerline of Second Avenue to its intersection with the centerline of First Avenue; thence in a southward direction along the centerline of First Avenue to its intersection with the centerline of Matthews Street; thence in a southward direction along the centerline of Matthews Street to its intersection with the centerline of Rowen Avenue; thence in an eastward direction along the centerline of Rowen Avenue to its intersection with the centerline of North 5th Street; thence in a southward direction along the centerline of North 5th Street to its intersection with the centerline of Valley Road; thence southeastward along the centerline of Valley Road to its intersection with the centerline of I-64; thence in a southward direction along the centerline of I-64 to its intersection with the centerline of Hospital Street; thence in an eastward direction along the centerline of Hospital Street to its intersection with the centerline of North 7th Street; thence in a southward direction along the centerline of North 7th Street to its intersection with the southbound lane of I-95; thence in a westward direction along the southbound lane of I-95 to its intersection with the centerline of the westbound lane of I-64; thence in an eastward direction along the centerline of the westbound lane of I-64 to its intersection with North Second Street; thence in a northward direction along the centerline of North Second Street to its intersection with the centerline of the CSX Railroad; thence in a westward direction along the centerline of the CSX Railroad to its intersection with the centerline of St. James Street; thence in a northward direction along the centerline of St. James Street to its intersection with the centerline of West Fells Street; thence in a westward direction along the centerline of

West Fells Street to its intersection with the centerline of Rose Avenue; thence in a northward direction along the centerline of Rose Avenue to its intersection with the centerline of Yancey Street; thence in a westward direction along the centerline of Yancey Street to its intersection with the centerline of Miller Avenue; thence in a westward direction along the centerline of Miller Avenue to its intersection with the centerline of ~~[Overbrook Road]~~ Wickham Street; thence in an eastward direction along the centerline of ~~[Overbrook Road]~~ Wickham Street to its intersection with the centerline of ~~[Fendall]~~ North Avenue; thence in a northward direction along the centerline of ~~[Fendall]~~ North Avenue to its intersection with the centerline of ~~[West Hooper]~~ Dove Street; thence in an eastward direction along the centerline of ~~[West Hooper]~~ Dove Street to ~~[the point at which it becomes East Hooper Street; thence in an eastward direction along the centerline of East Hooper Street to its intersection with the census block boundary; thence in a southward direction along the census block boundary to its intersection with the centerline of East Norwood Avenue; thence in a westward direction along the centerline of East Norwood Avenue to its intersection with the centerline of Lamb Avenue; thence in a southward direction along the centerline of Lamb Avenue to its intersection with the centerline of East Lancaster Road; thence in an eastward direction along the centerline of East Lancaster Road and East Lancaster Road extended to its intersection with the centerline of Cannons Branch; thence in a northward direction along the centerline of Cannons Branch to its intersection with the centerline of the Ravine; thence in an eastward direction along the centerline of the Ravine to]~~ its intersection with the centerline of the Richmond-Henrico Turnpike; thence in a northward direction along the centerline of the Richmond-Henrico Turnpike to its intersection with the centerline of East Brookland Park Boulevard; thence in

an eastward direction along the centerline of East Brookland Park Boulevard to its intersection with the centerline of Second Avenue, the point of beginning.

Sec. 9-106. Precinct 607.

Election Precinct 607 shall be described as follows:

Beginning at the intersection of North 1st Street and I-64 and I-95; thence in a southward direction along the centerline of North 1st Street to its intersection with the centerline of Duval Street; thence in an eastward direction along the centerline of Duval Street to its intersection with the centerline of North Second Street; thence in a southward direction along the centerline of North Second Street to its intersection with the [eastbound lane of East Broad Street; thence in a westward direction along the eastbound lane of East Broad Street to the point at which it becomes West Broad Street; thence in a westward direction along the eastbound lane of West Broad Street to its intersection with the centerline of North Adams Street; thence in a southward direction along the centerline of North Adams Street to the point at which it becomes South Adams Street; thence in a southward direction along the centerline of South Adams Street to its intersection with the centerline of West Canal Street; thence in a westward direction along the centerline of West Canal Street to its intersection with the northbound lane of South Belvidere Street; thence in a southward direction along the northbound lane of South Belvidere Street to its intersection with the Downtown Expressway; thence in an eastward direction along the centerline of the Downtown Expressway to its intersection with the centerline of South 2nd Street; thence in a southward direction along the centerline of South 2nd Street to its intersection with the] northbound lane of South Belvidere Street; thence in a southward direction along the centerline of the northbound lane of South Belvidere Street to its intersection with the centerline of the James River; thence in an

eastward direction along the centerline of the James River to its intersection with the centerline of I-95; thence in a northward direction along the centerline of I-95 to its intersection with the centerline of the CSX Railroad; thence in a northward direction along the centerline of the CSX Railroad to its intersection with the north shore of the James River; thence in a westward direction along the north shore of the James River to its intersection with the centerline of South 14th Street; thence in a northward direction along the centerline of North 14th Street to its intersection with the centerline of East Main Street; thence in an eastward direction along the centerline of East Main Street to its intersection with the northbound lane of North 14th Street; thence in a northward direction along the northbound lane of North 14th Street to its intersection with the centerline of Bank Street; thence in a westward direction along the centerline of Bank Street to its intersection with the centerline of North 14th Street; thence in a northward direction along the centerline of North 14th Street to its intersection with the eastbound lane of East Broad Street; thence in an eastward direction along the eastbound lane of East Broad Street to its intersection with the southbound lane of I-95; thence in a northwestward direction along the southbound lane of I-95 to its intersection with the centerline of North 1st Street, the point of beginning.

Sec. 9-107. Precinct 609.

Election Precinct 609 shall be described as follows:

Beginning at the intersection of the centerlines of I-95 and the James River; thence in a generally eastward and southward direction along the north shore of the James River to its intersection with Goodes Creek extended; thence in a westward direction along Goodes Creek extended to its intersection with Goodes Creek; thence in a westward direction along Goodes Creek to its intersection with the centerline of Commerce Road; thence in a northward

direction along the centerline of Commerce Road to its intersection with the centerline of ~~[East 9th Street]~~ Semmes Avenue; thence in a ~~[northwestward direction along the centerline of East 9th Street to its intersection with the centerline of Maury Street;~~ thence in a southwestward direction along the centerline of Maury Street to its intersection with the centerline of East 10th Street; thence in a northwestward direction along the centerline of East 10th Street to its intersection with the centerline of Stockton Street; thence in a southwestward direction along the centerline of Stockton Street to its intersection with the centerline of East 15th Street; thence in a northwestward direction along the centerline of East 15th Street to its intersection with the centerline of Hull Street; thence in a southwestward direction along the centerline of Hull Street to its intersection with the centerline of Cowardin Avenue] southward direction along the centerline of Semmes Avenue to its intersection with Cowardin Avenue; thence in a generally northward direction along the centerline of Cowardin Avenue to its intersection with the northbound lane of the Robert E. Lee Bridge; thence in a northward direction along the northbound lane of the Robert E. Lee Bridge to its intersection with the centerline of the James River; thence in an eastward direction along the James River to its intersection with the centerline of I-95, the point of beginning.

Sec. 9-112. Precinct 705.

Election Precinct 705 shall be described as follows:

Beginning at the intersection of the centerlines of P Street and North 38th Street; thence in a southward direction along the centerline of North 38th Street to its intersection with the centerline of N Street; thence in an eastward direction along the centerline of N Street to its intersection with the centerline of North 39th Street; thence in a southwestward direction along the centerline of North 39th Street to its intersection with the centerline of Crestview

Road; thence in a southward direction along the centerline of Crestview Road to its intersection with the centerline of Government Road; thence in a westward direction along the centerline of Government Road to its intersection with the centerline of East Grace Street; thence in a westward direction along the centerline of East Grace Street to its intersection with the centerline of North 31st Street; thence in a northeastward direction along the centerline of North 31st Street to its intersection with the centerline of [P] East Clay Street; thence in a westward direction along East Clay Street to its intersection with the centerline of North 29th Street; thence in a northward direction along the centerline of North 29th Street to its intersection with the centerline of M Street; thence in an eastward direction along the centerline of M Street to its intersection with the centerline of North 30th Street; thence in a northward direction along the centerline of North 30th Street to its intersection with P Street; thence in a southeastward direction along the centerline of P Street to its intersection with the centerline of North 38th Street, the point of beginning.

Sec. 9-114. Precinct 707.

Election Precinct 707 shall be described as follows:

Beginning at the intersection of North [~~31st~~] 30th Street and P Street; thence in a westward direction along the centerline of P Street to its intersection with the centerline of Burton Street; thence in a southwestward direction along the centerline of Burton Street to its intersection with the centerline of North 22nd Street; thence in a northward direction along the centerline of North 22nd Street to its intersection with the centerline of Q Street; thence in a westward direction along the centerline of Q Street to its intersection with the centerline of Mosby Street; thence in a southward direction along the centerline of Mosby Street to its intersection with the centerline of Cedar Street; thence in a southwestward direction along the

centerline of Cedar Street to its intersection with the centerline of North 19th Street; thence in a southward direction along the centerline of North 19th Street to its intersection with the centerline of East Marshall Street; thence in an eastward direction along the centerline of East Marshall Street to its intersection with the centerline of North 25th Street; thence in a southward direction along the centerline of North 25th Street to the point at which it becomes South 25th Street; thence in a southward direction along the centerline of South 25th Street to its intersection with the centerline of East Cary Street; thence in an eastward direction along the centerline of East Cary Street to its intersection with Pear Street; thence in a southward direction along the centerline of Pear Street to its intersection with the Norfolk Southern Railroad; thence in a westward direction along the Norfolk Southern Railroad to its intersection with the north shore of the James River; thence in an eastward direction along the north shore of the James River to its intersection with the centerline of South Ash Street extended; thence in a northward direction along the centerline of South Ash Street extended to its intersection with the centerline of Dock Street; thence in a westward direction along the centerline of Dock Street to its intersection with the centerline of Ash Street; thence in a northward direction along the centerline of Ash Street to its intersection with the centerline of East Main Street; thence in a northward direction along the centerline of East Main Street to its intersection with the centerline of Williamsburg Avenue; thence in an eastward direction along the centerline of Williamsburg Avenue to the centerline of the Norfolk Southern Railway; thence in an eastward direction along the centerline of the Norfolk Southern Railway to its intersection with the centerline of Government Road; thence in a westward direction along the centerline of Government Road to its intersection with the centerline of East Grace Street; thence in a westward direction along the centerline of East Grace Street to

its intersection with the centerline of North 31st Street; thence in a northward direction along the centerline of North 31st Street to its intersection with the centerline of East Clay Street; thence in a westward direction along East Clay Street to its intersection with the centerline of North 29th Street; thence in a northward direction along the centerline of North 29th Street to its intersection with the centerline of M Street; thence in a westward direction along the centerline of M Street to its intersection with the centerline of North 30th Street; thence in a northward direction along North 30th Street to its intersection with the centerline of P Street, the point of beginning.

Sec. 9-115. Precinct 708.

Election Precinct 708 shall be described as follows:

Beginning at the intersection of the eastbound lane of the Leigh Street Viaduct and the southbound lane of I-95; thence south along the southbound lane of I-95 to the eastbound lane of East Broad Street; thence in a westward direction along the eastbound lane of East Broad Street to its intersection with the southbound lane of North 14th Street; thence in a southward direction along the southbound lane of North 14th Street to its intersection with the centerline of Bank Street; thence in an eastward direction along the centerline of Bank Street to its intersection with the northbound lane of North 14th Street; thence in a southward direction along the northbound lane of North 14th Street to its intersection with the centerline of East Main Street; thence in a westward direction along the centerline of East Main Street to its intersection with the centerline of South 14th Street; thence in a southward direction along the centerline of South 14th Street to its intersection with the north shore of the James River; thence in an eastward direction along the north shore of the James River to its intersection with the CSX Railroad; thence in a southward direction along the CSX Railroad to its

intersection with the centerline of the James River; thence in an eastward direction along the centerline of the James River to its intersection with the southbound lane of I-95; thence in a southward direction along the southbound lane of I-95 to its intersection with the centerline of the James River; thence in an eastward direction along the centerline of the James River to its intersection with the centerline of the theoretical extension of South Ash Street; thence in a westward direction along the centerline of the theoretical extension of South Ash Street extended to its intersection with the north shore of the James River; thence in a northward direction along the north shore of the James River to its intersection with the Norfolk Southern Railroad spur; thence in an eastward direction along the Norfolk Southern Railroad spur to its intersection with the centerline of Pear Street; thence in a northward direction along the centerline of Pear Street to its intersection with the centerline of ~~[East-Cary]~~ Dock Street; thence in a westward direction along the centerline of ~~[East-Cary]~~ Dock Street to its intersection with the centerline of South ~~[25th]~~ 20th Street; thence in a northward direction along the centerline of South ~~[25th]~~ 20th Street to ~~[the point at which it becomes North 25th Street]~~ its intersection with the centerline of East Main Street at which point it becomes North 20th Street; thence in a northward direction along the centerline of North ~~[25th]~~ 20th Street to its intersection with East Marshall Street; thence in a westward direction along East Marshall Street to its intersection with the centerline of ~~[North 19th]~~ Cedar Street; thence in a northward direction along the centerline of ~~[North 19th]~~ Cedar Street ~~[to the point at which it becomes Cedar Street]~~; thence in a ~~[northward]~~ northeastern direction along the centerline of Cedar Street to its intersection with the centerline of Mosby Street; thence in a northward direction along the centerline of Mosby Street to its intersection with ~~[the eastbound lane of the Leigh]~~ Venable Street ~~[Viaduct]~~; thence in a westward direction along ~~[the eastbound lane~~

~~of the Leigh~~ Venable Street [~~Viaduct~~] to its intersection with the [~~southbound lane of I-95~~]
centerline of Oliver Hill Way; thence in a northward direction along the centerline of Oliver
Hill Way to its intersection with the eastbound lane of the Leigh Street Viaduct; thence in a
westward direction along the eastbound lane of the Leigh Street Viaduct to its intersection
with the southbound lane of I-95, the point of beginning.

Sec. 9-128. District precinct assignments.

For the purpose of the election of persons to the City Council and the School Board, the precincts shall be assigned to districts as follows:

- (1) Precincts 101 through 115, District 1.
- (2) Precincts 203 through [~~245~~] 216, District 2.
- (3) Precincts 301 through [~~340~~] 311, District 3.
- (4) Precincts 402 through 415, District 4.
- (5) Precincts 501 through 510, District 5.
- (6) Precincts 602 through [~~640~~] 611, District 6.
- (7) Precincts 701 through [~~708~~] 709, District 7.
- (8) Precincts 802 through 814, District 8.
- (9) Precincts 902 through 911, District 9.

§ 3. That Chapter 9, Article III of the Code of the City of Richmond (2020) be and hereby is amended and reordained by **adding therein new sections** numbered 9-76.1, 9-86.1, 9-108.1, and 9-115.1 as follows:

Sec. 9-76.1. Precinct 216.

Election Precinct 216 shall be described as follows:

Beginning at the intersection of North Lombardy Street and West Moore Street; thence eastward along West Moore Street to its intersection with Bowe Street; thence in a southward direction along Bowe Street to its intersection with West Leigh Street; thence in an eastward direction along West Leigh Street to its intersection with Kinney Street; thence in a northward direction along Kinney Street to its intersection with West Moore Street; thence in an eastward direction along West Moore Street to its intersection with North Harrison Street; thence in a southward direction along North Harrison Street to its intersection with West Broad Street; thence in a westward direction along West Broad Street to its intersection with North Lombardy Street; thence in a northward direction along North Lombardy Street to its intersection with West Moore Street, the point of beginning.

Sec. 9-86.1. Precinct 311.

Election Precinct 311 shall be described as follows:

Beginning at the intersection of Hermitage Road and I-64; thence in a southward direction along the centerline of Hermitage Road to its intersection with West Broad Street; thence in an eastward direction along West Broad Street to its intersection with North Lombardy Street; thence in a northward direction along North Lombardy Street to its intersection with I-95 and I-64; thence in a northwestward direction along I-64 to its intersection with Hermitage Road, the point of beginning.

Sec. 9-108.1. Precinct 611.

Election Precinct 611 shall be described as follows:

Beginning at the intersection of Semmes Avenue and West Commerce Road; thence in an eastward direction along West Commerce Road to its intersection with Hull Street at which point it becomes East Commerce Road; thence in an eastward direction along East Commerce Road to its intersection with East 9th Street; thence in a northwestward direction along East Main Street to its intersection with Maury Street; thence in a southwestward direction along Maury Street to its intersection with East 10th Street; thence in a northwestward direction along East 10th Street to its intersection with Stockton Street; thence in a southeastward direction along Stockton Street to its intersection with East 15th Street; thence in a northwestward direction along East 15th Street to its intersection with Hull Street; thence in a southwestward direction along Hull Street to its intersection with Cowardin Avenue; thence in a northwestward direction along Cowardin Avenue to its intersection with Semmes Avenue; thence in a northeastward direction along Semmes Avenue to its intersection with West Commerce Road, the point of beginning.

Sec. 9-115.1. Precinct 709.

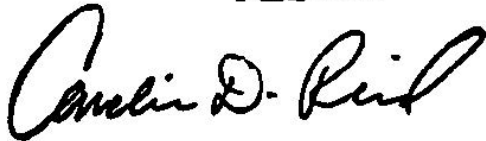
Election Precinct 709 shall be described as follows:

Beginning at the intersection of East Marshall Street and North 25th Street; thence in a southward direction along North 25th Street to its intersection with East Main Street at which point becomes South 25th Street; thence in a southward direction along South 25th Street to its intersection at East Cary Street; thence westward along East Cary Street to its intersection with Pear Street; thence southward along Pear Street to its intersection with Dock Street; thence in an eastward direction along Dock Street to its intersection with South 20th Street; thence in a northward direction along South 20th Street to its intersection with East Main

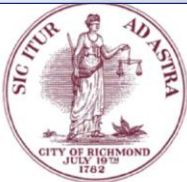
Street at which point becomes North 20th Street; thence in a northward direction along North 20th Street to its intersection with East Marshall Street; thence in an eastward direction along East Marshall Street to North 25th Street, the point of beginning.

§ 4. This ordinance shall be in force and effect on the thirtieth day after the date of adoption.

**A TRUE COPY:
TESTE:**

A handwritten signature in black ink, appearing to read "Carolin D. Reed". The signature is written in a cursive style with a large initial 'C'.

City Clerk



Richmond City Council

The Voice of the People

Richmond, Virginia

Office of the Council Chief of Staff

Council Ordinance/Resolution Request

TO **Haskell Brown, Interim City Attorney**

FROM Joyce L. Davis, Interim Council Chief of Staff

COPY Cynthia I. Newbille, 7th District Councilmember
All Members of Council
Tabrica Rentz, Acting Deputy City Attorney

DATE April 20, 2022

PAGE/s 1 of 5

TITLE **2021 Richmond City Council Decennial Voter District Redistricting Plan**

This is a request for the drafting of an **Ordinance** **Resolution**

REQUESTING COUNCILMEMBER/PATRON

All Members of Council

SUGGESTED STANDING COMMITTEE

Government Operations

ORDINANCE/RESOLUTION SUMMARY

This ordinance is for reapportioning the nine Richmond Voter Districts and provide the 2021 Richmond City Council Decennial Voter District Redistricting Plan.

BACKGROUND

This O&R request is to provide the 2021 Richmond City Council Decennial Voter District Redistricting Plan. This request is for reapportioning the nine Richmond Voter Districts to reflect population shifts following the release of the 2020 decennial census by the U.S. Bureau of the Census.

The attached documents describes all of the changes needed for the Council Voter Districts to achieve the proportionality in the nine Council districts. The attached documents, entitled "2021 Richmond City Council Decennial Voter District Redistricting Plan" are based on Map 2C, which was selected by the public and recommended by Council for a plan for voter district changes and precinct changes. The attached maps correspond with the district and precinct changes.

Redistricting Changes Based on 2020 Census and Voter Districts

Based upon the 2020 census, four Richmond Voter Districts changed beyond 5%

variance/deviation

With the adjusted population numbers, the city now has four (up from a previous three) Richmond Voter Districts whose numbers are outside a five percent variance/deviation of what represents an "ideal" number of 25,389 persons living in them (which is the total population divided by nine Richmond Voter Districts). These include:

- Richmond North Central 2nd Voter District
Adjusted Richmond Redistricting population makes the Richmond North Central 2nd Voter District over the "ideal" population (of 25,389) by +1,871 residents, with a **variance of +7.37%** (Previous variance, using just U. S. Census population, was +8.02 %). **This means the Richmond North Central 2nd Voter District would need to move at least an estimated 614 people out of that district to be within +5% variance.**
- Richmond Northside 3rd Voter District
Adjusted Richmond Redistricting population makes the Richmond Northside 3rd Voter District under the "ideal" population (of 25,389) by -2,794 residents, with a **variance of -11.00%** (Previous variance, using just U. S. Census population, was -11.69%). **This means the Richmond Northside 3rd Voter District would need to move at least an estimated 1537 people into of that district to be within -5% variance.**
- Richmond Gateway 6th Voter District
Adjusted Richmond Redistricting population makes the Richmond Gateway 6th Voter District over the "ideal" population (of 25,389) by +1,439 residents, with a **variance of +5.67%** (Previous variance, using just U. S. Census population, was +6.96%). **This means the Richmond Gateway 6th Voter District would need to move at least an estimated 182 people out of that district to be within +5% variance.**
- Richmond East End 7th Voter District
Adjusted Richmond Redistricting population makes the Richmond East End 7th Voter District over the "ideal" population (of 25,389) by +1,294 residents, with a **variance of +5.10%** (Previous variance, using just U. S. Census population, was +4.29%). **This means the Richmond East End 7th Voter District would need to move at least an estimated 37 people out of that district to be within +5% variance.**

Richmond City Council Redistricting process

The intent of the redistricting process was for public participation in plan creation for reapportioning and redistricting of the local Richmond Voter Districts and be fair, inclusive and equitable and provide opportunity for public input.

The current Richmond Voter Districts were reapportioned/redistricted through the Richmond City Council 2011/2012 Richmond Decennial Voter District Redistricting Project and Council Ord. # 2011-185 (As Amended) on Nov. 28, 2011, in response to the 2010 U.S. Census. Official approval to use the Richmond Voter Districts was provided via the United States of America Department of Justice preclearance process, which was received on March 9, 2012.

The Richmond Criteria for Redistricting (Richmond City Council Resolution # 2021-R084) are in compliance with state and federal law and were developed with the assistance of the Richmond Office of the City Attorney's redistricting consultant, Mr. Gerry Hebert, and included public input, discussion, awareness, engagement, feedback, deliberations, comment, opportunity, inclusion, and public hearings on the proposed resolution.

- The 2021 Council redistricting plan shall fully comply with all relevant federal and state laws with regard to the protection of voting rights.
- The 2021 Council redistricting plan should, to the extent feasible, avoid splits of voting precincts between the Council, School Board, state legislative and congressional election districts.
- The 2021 Council redistricting plan should, to the extent feasible, maximize voter convenience and the effective administration of elections.
- The 2021 Council redistricting plan should, wherever possible, preserve communities of interest as defined in section 24.2-304.4 of the Code of the Virginia (1950), as amended.
- The 2021 redistricting plan should, if possible, consolidate smaller voting precincts so that the number of registered voters in each precinct is at least the statewide average.

2021-2022 Richmond Redistricting Population

Richmond Redistricting Population: 228,501

- Richmond's population numbers were adjusted to comply with Virginia law.
- The adjusted Richmond population numbers were updated to respond to recently amended state law regarding redistricting performed 2021 onward - in that population numbers used for reapportionment and redistricting are to reflect persons incarcerated in federal prisons and in state and local correctional facilities, including city jails - and reassign them to their pre-incarceration home residence.
- The adjusted population numbers to be used for Richmond Redistricting map drawing will be 228,501, up from current U.S. Census numbers of 226,610.
- Total 2021-2022 Richmond Redistricting Population: 228,501
Includes [U.S. Bureau of the Census](#) - 2020 U.S. Census Richmond population (226,610), as adjusted by the Virginia General Assembly Division of Legislative Services (increase of 1,891) for a total population for reapportionment and redistricting of 228,501.
- The adjusted population for Redistricting, which are dispersed throughout the city, adds 1,891 persons to Census numbers.
- Because there are nine local Richmond Voter Districts, dividing the adjusted Richmond Redistricting Population of 228,501 by nine to find the average or "ideal" number of persons living in each District results in 25,389 per District.
- Variances/deviations of no greater than 5 percent above or below the "ideal" population per District, are generally acceptable.

The adjusted Redistricting population numbers include Census numbers and persons who were incarcerated in Virginia and provided Richmond as their home address, as adjusted by the Virginia General Assembly Division of Legislative Services pursuant to the Virginia Code of Laws § **24.2-314**, et seq.).

Public Input, Meetings, and Schedule

Richmond City Council was committed to ensure its redistricting process was clearly defined, transparent, inclusive, equitable, and driven by and responsive to resident input, discussion, awareness, engagement, feedback, deliberations, comment, inclusion, and opportunity on behalf of Richmond residents.

The schedule included public transparency, opportunity for public comment through emails, web portal for awareness, public involvement and input in meetings held with the public engagement and drawing of the maps.

Public meetings regarding the criteria and schedule included the following:

- **October 11, 2021**
Richmond City Council Informal meeting on Monday, October 11, 2021 Presentation and discussion of redistricting.
- **December 6, 2021**
Richmond City Council Organizational Development Standing Committee meeting 2021-R084, Presentation and discussion of proposed criteria and schedule.
- **December 13, 2021**
Richmond City Council Formal Meeting on Monday, December 13, 2021, which included the introduction of Richmond City Council Resolution # 2021-R084
- **December 15, 2021**
Richmond City Council Governmental Operations Standing Committee Meeting, Discussion of draft legislation
- **December 21, 2021**
Richmond City Council Special Meeting
Richmond City Council Meeting to adopt Redistricting Criteria and Schedule
- **Wednesday, February 9, 2022; 6:00-8:00 p.m.**
Public drawing of Richmond Voter District Map Options
<https://richmondva.legistar.com/MeetingDetail.aspx?ID=927425&GUID=D43B316D-FB24-4F11-BAE7-4BE871DA762B&Options=info | &Search=>
- **Thursday, February 10, 2022; 6:00-8:00 p.m.**
Public drawing of Richmond Voter District Map Options
<https://richmondva.legistar.com/MeetingDetail.aspx?ID=927426&GUID=B445D768-FA3B-4E84-8BCD-0F622B5140E2&Options=info | &Search=>
- **Friday, February 11, 2022; Noon-2:00 p.m.**
Public drawing of Richmond Voter District Map Options
<https://richmondva.legistar.com/MeetingDetail.aspx?ID=927427&GUID=86559D29-779C-489C-BA51-5329AEE6D4B3&Options=info | &Search=>
- **Monday, February 14, 2022; 6:00-8:00 p.m.**
Richmond City Council Formal Meeting
<https://richmondva.legistar.com/MeetingDetail.aspx?ID=902218&GUID=F6E186BA-D30E-4C08-B44F-48A77502FA85&Options=info | &Search=>
- **Wednesday, February 23, 2022; 3:30-5:00 p.m.** (additional meeting added 2.17.2022)
Richmond City Council Special Meeting - Redistricting
<https://richmondva.legistar.com/MeetingDetail.aspx?ID=932294&GUID=4217F585-191C-4788-B5D1-C178C07F3D02&Options=info | &Search=>
At the conclusion of the Redistricting Special meeting held on 2.23.2022, a map referred to as 2A was discussed and requested by Councilmembers. After the meeting, it was determined the proposed map did not meet the deviance percentage to balance the voter district. As a result adjustments were made to the proposed map to balance it, however it was slightly different than that discussed at the public meeting. President Newbille requested that Map 2A be placed on the agenda for discussion and decision in a public meeting by all members of Council.
- **Monday, February 28, 2022; 6:00-8:00 p.m.**
Richmond City Council Formal Meeting
<https://richmondva.legistar.com/MeetingDetail.aspx?ID=859300&GUID=8160C8AA-3AE6-4C01-B51D-F3BD6DC3C5C7&Options=info | &Search=>
Council redistricting information and engagement

- ~~Tuesday, March 1, 2022; 6:00-8:00 p.m.~~ (not a meeting/moved to 3.8.2022 on 3.7.2022)
30 Day Public Comment Period on draft Redistricting plan/plans begins
- **Monday, March 7, 2022; 5:00-6:30 p.m.** (additional meeting added 3.2.2022/Updated 3.4.2022)
Richmond City Council Special Meeting
<https://richmondva.legistar.com/MeetingDetail.aspx?ID=937304&GUID=E5122931-23C2-4AFD-8260-FEBD9D3A7545&Options=info|&Search=>
Introduction of a draft redistricting plan/s for public comment/Update redistricting schedule. The meeting was held to introduce two resolutions related to redistricting under expedited consideration. The meeting also included a review of proposed Richmond Decennial Voter District Redistricting Demonstration Map 2C (<https://richmond-redistricting-cor.hub.arcgis.com/>).
- **Tuesday, March 8, 2022** (not a meeting)
30 Day (actually 49 day) Public Comment Period on draft Redistricting Plan begins (Note: This is not a final map/plan and is for continued public comments and engagement.)
- **Monday, April 11, 2022; 6:00-8:00 p.m.**
Richmond City Council Formal Meeting
<https://richmondva.legistar.com/MeetingDetail.aspx?ID=902222&GUID=0134CDB8-4524-4C66-9F3F-13CB69B9B407&Options=info|&Search=april+11>
Council Redistricting information and engagement (public comment/engagement continues).
- **Monday, April 25, 2022; 6:00-8:00 p.m.**
Richmond City Council Formal Meeting
<https://richmondva.legistar.com/MeetingDetail.aspx?ID=902223&GUID=5BECA3DE-8F99-4A61-97DB-B574FA6CB5D5&Options=info|&Search=>
Final day for public comment on draft plan
(49 days of public comment [Note: 19 additional days/more than 30]).
Introduction of final redistricting plan.
- **Monday, May 23, 2022; 6:00-8:00 p.m.** (updated 3.7.2022)
Richmond City Council Formal Meeting
<https://richmondva.legistar.com/MeetingDetail.aspx?ID=902225&GUID=19408F3F-482B-4F6F-B35A-DFF1ED978714&Options=info|&Search=>
Final public hearing and adoption of final redistricting plan. Council (City) Clerk publishes notice of final redistricting plan.
- **Wednesday, June 22, 2022** (not a meeting)
Redistricting plan/New Voter District map takes effect
(NOTE: Prior date for plan taking effect was 5.26.2022 and was extended further on 3.7.2022 to provide even more public input.)

FISCAL IMPACT STATEMENT

Fiscal Impact	Yes <input type="checkbox"/>	No <input checked="" type="checkbox"/>
Budget Amendment Required	Yes <input type="checkbox"/>	No <input checked="" type="checkbox"/>
Estimated Cost or Revenue Impact	\$	

Attachment/s Yes No

Voter Precinct 113

City of Richmond, VA

Shaded Area = Prior Precinct

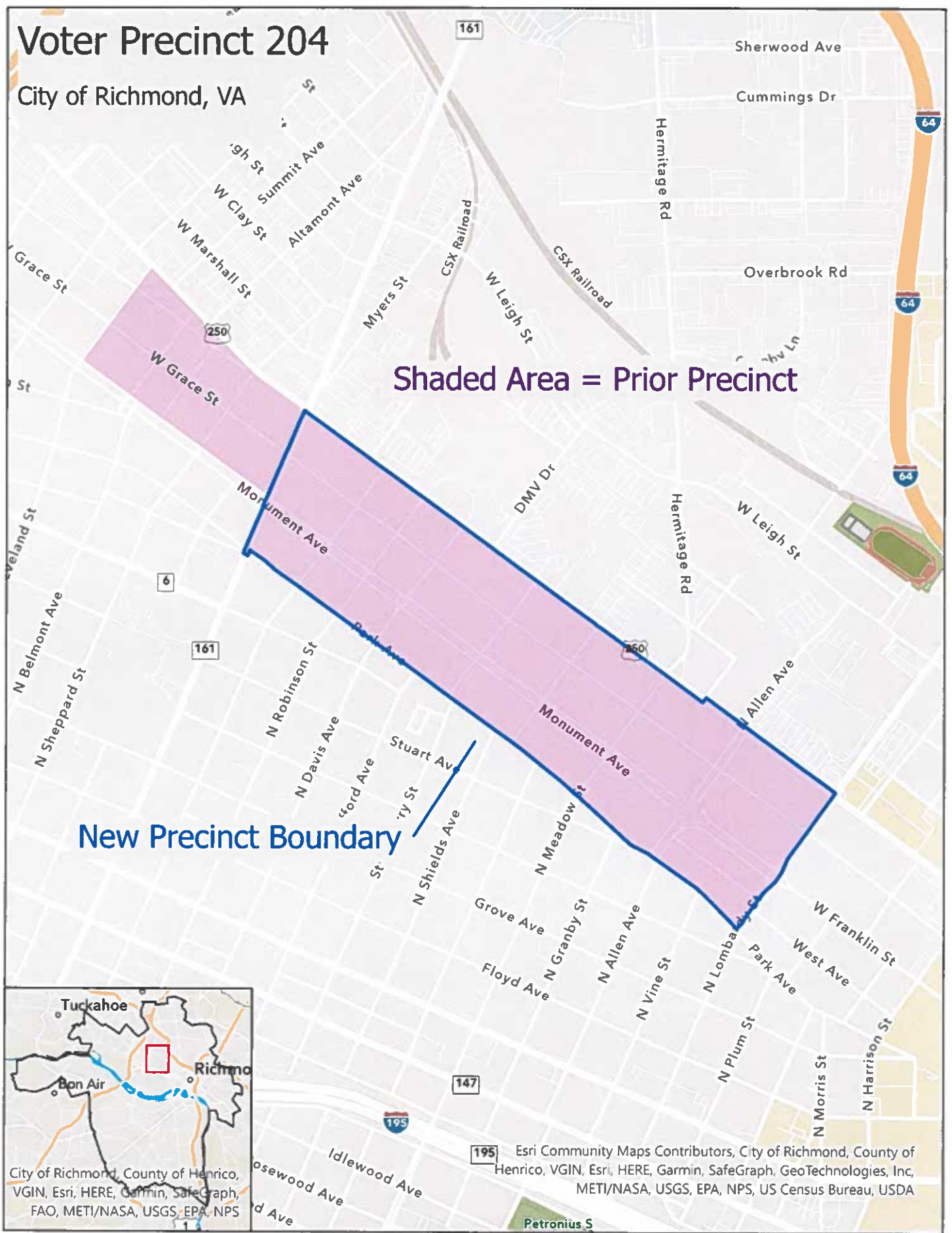
New Precinct Boundary



Esri Community Maps Contributors, City of Richmond, County of Henrico, VGIN, Esri, HERE, Garmin, SafeGraph, GeoTechnologies, Inc, METI/NASA, USGS, EPA, NPS, US Census Bureau, USDA

Voter Precinct 204

City of Richmond, VA



Esri Community Maps Contributors, City of Richmond, County of Henrico, VGIN, Esri, HERE, Garmin, SafeGraph, GeoTechnologies, Inc, METI/NASA, USGS, EPA, NPS, US Census Bureau, USDA

Petronius S

Voter Precinct 208

City of Richmond, VA

Shaded Area = Prior Precinct

New Precinct Boundary



City of Richmond, County of Henrico, VGIN, Esri, HERE, Garmin, SafeGraph, FAO, METI/NASA, USGS, EPA, NPS

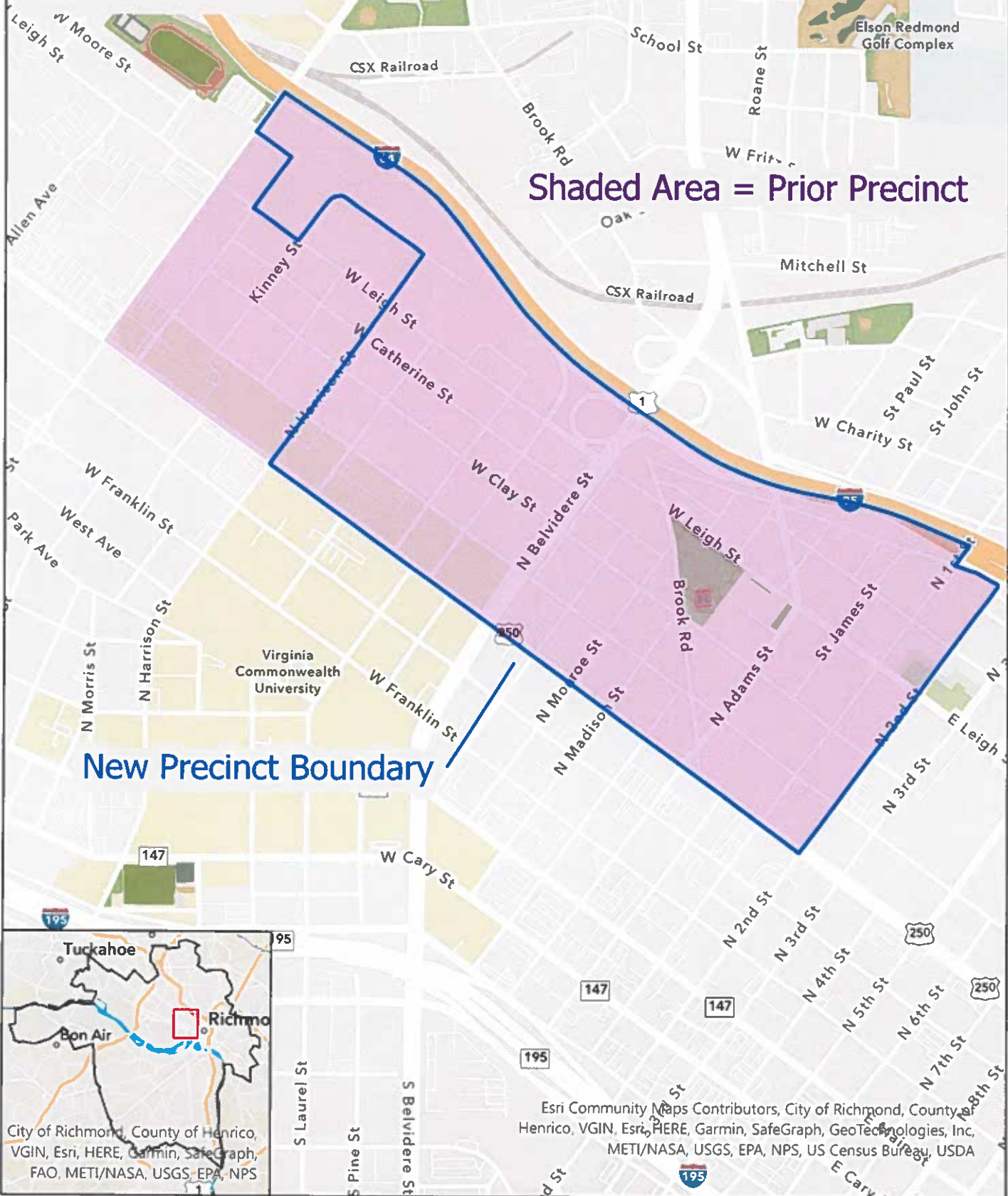
Esri Community Maps Contributors, City of Richmond, County of Henrico, VGIN, Esri, HERE, Garmin, SafeGraph, GeoTechnologies, Inc, METI/NASA, USGS, EPA, NPS, US Census Bureau, USDA

Voter Precinct 213

City of Richmond, VA

Shaded Area = Prior Precinct

New Precinct Boundary



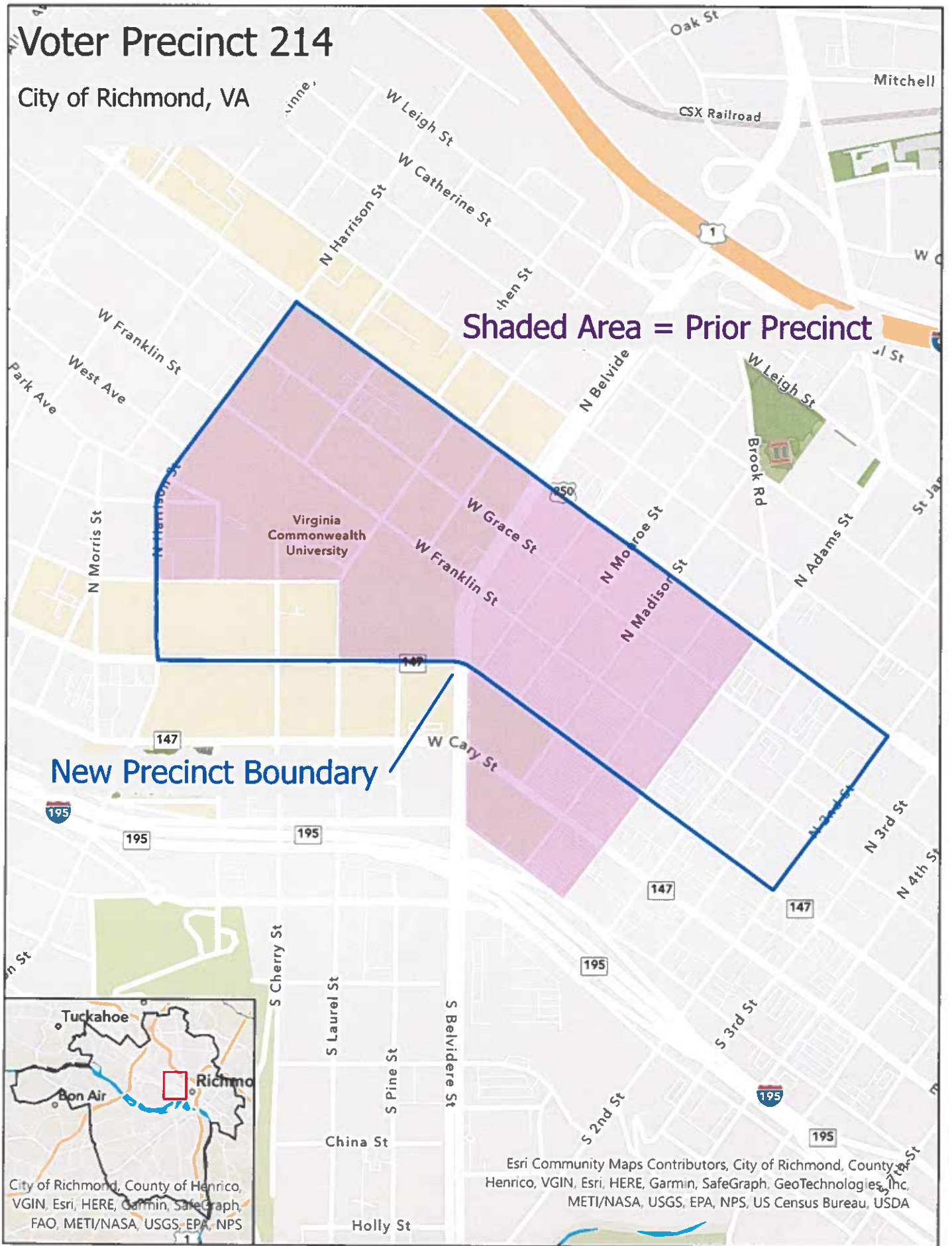
Esri Community Maps Contributors, City of Richmond, County of Henrico, VGIN, Esri, HERE, Garmin, SafeGraph, GeoTechnologies, Inc, METI/NASA, USGS, EPA, NPS, US Census Bureau, USDA

Voter Precinct 214

City of Richmond, VA

Shaded Area = Prior Precinct

New Precinct Boundary



City of Richmond, County of Henrico, VGIN, Esri, HERE, Garmin, SafeGraph, FAO, METI/NASA, USGS, EPA, NPS

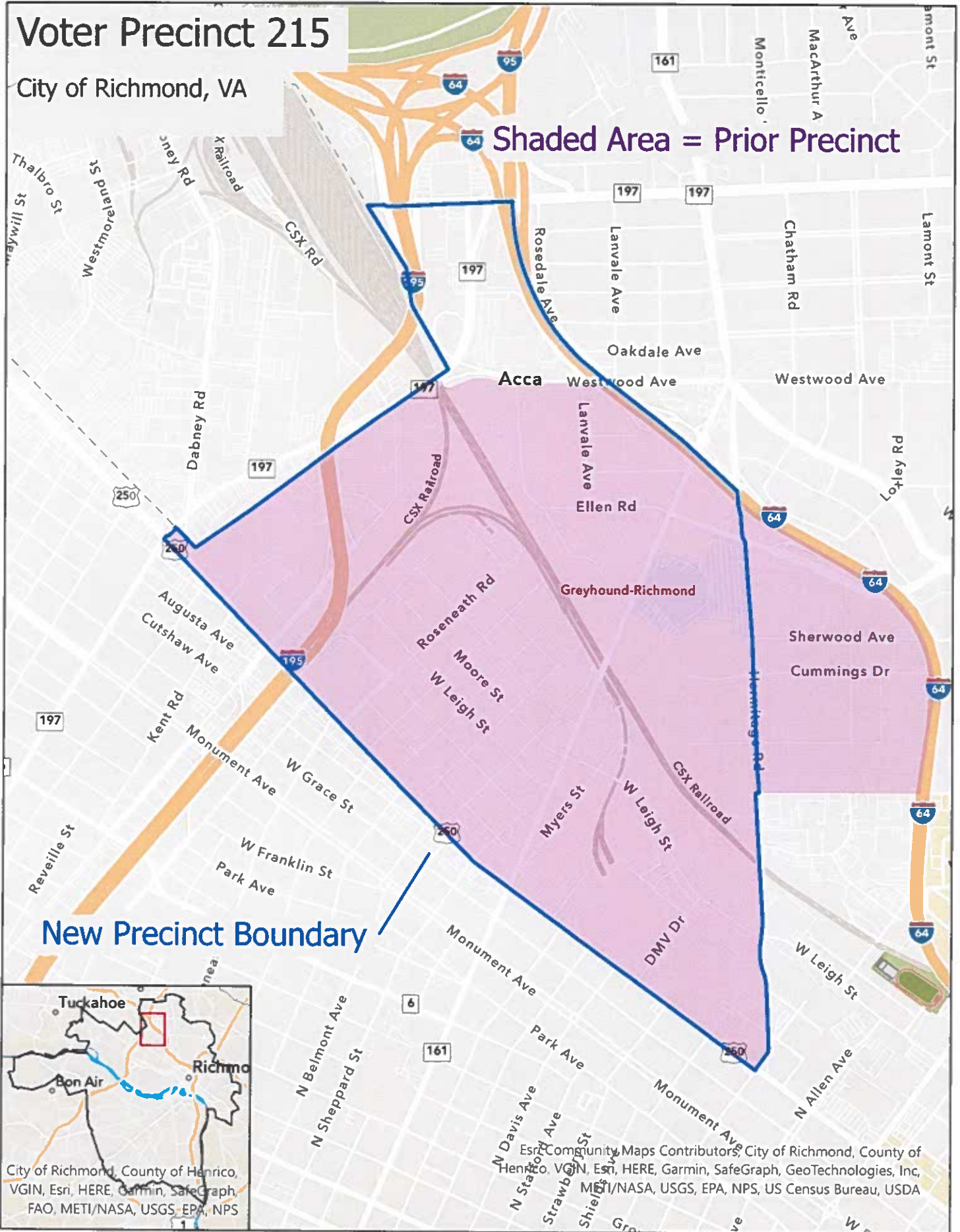
Esri Community Maps Contributors, City of Richmond, County of Henrico, VGIN, Esri, HERE, Garmin, SafeGraph, GeoTechnologies, Inc, METI/NASA, USGS, EPA, NPS, US Census Bureau, USDA

Voter Precinct 215

City of Richmond, VA

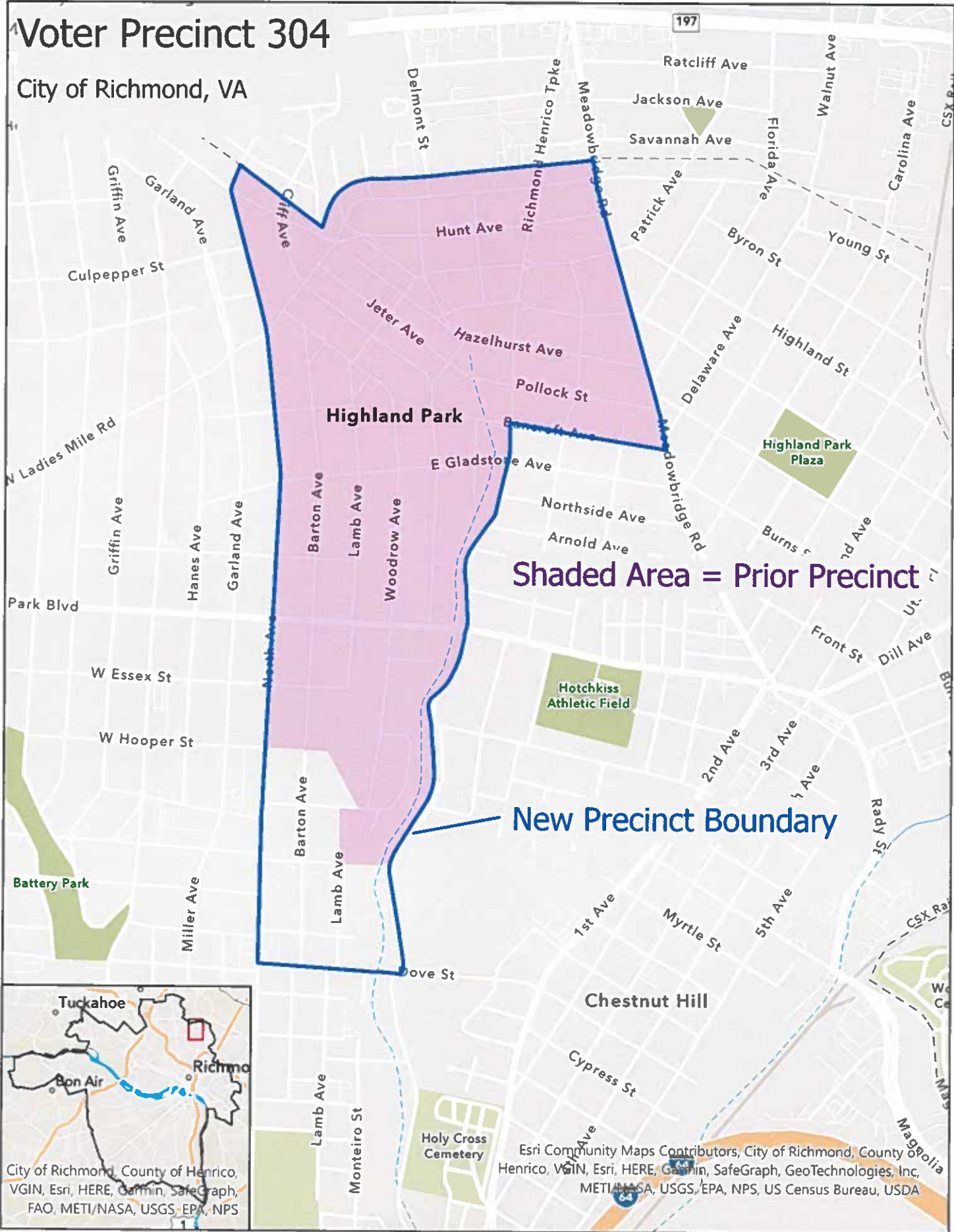
Shaded Area = Prior Precinct

New Precinct Boundary



Voter Precinct 304

City of Richmond, VA



Shaded Area = Prior Precinct

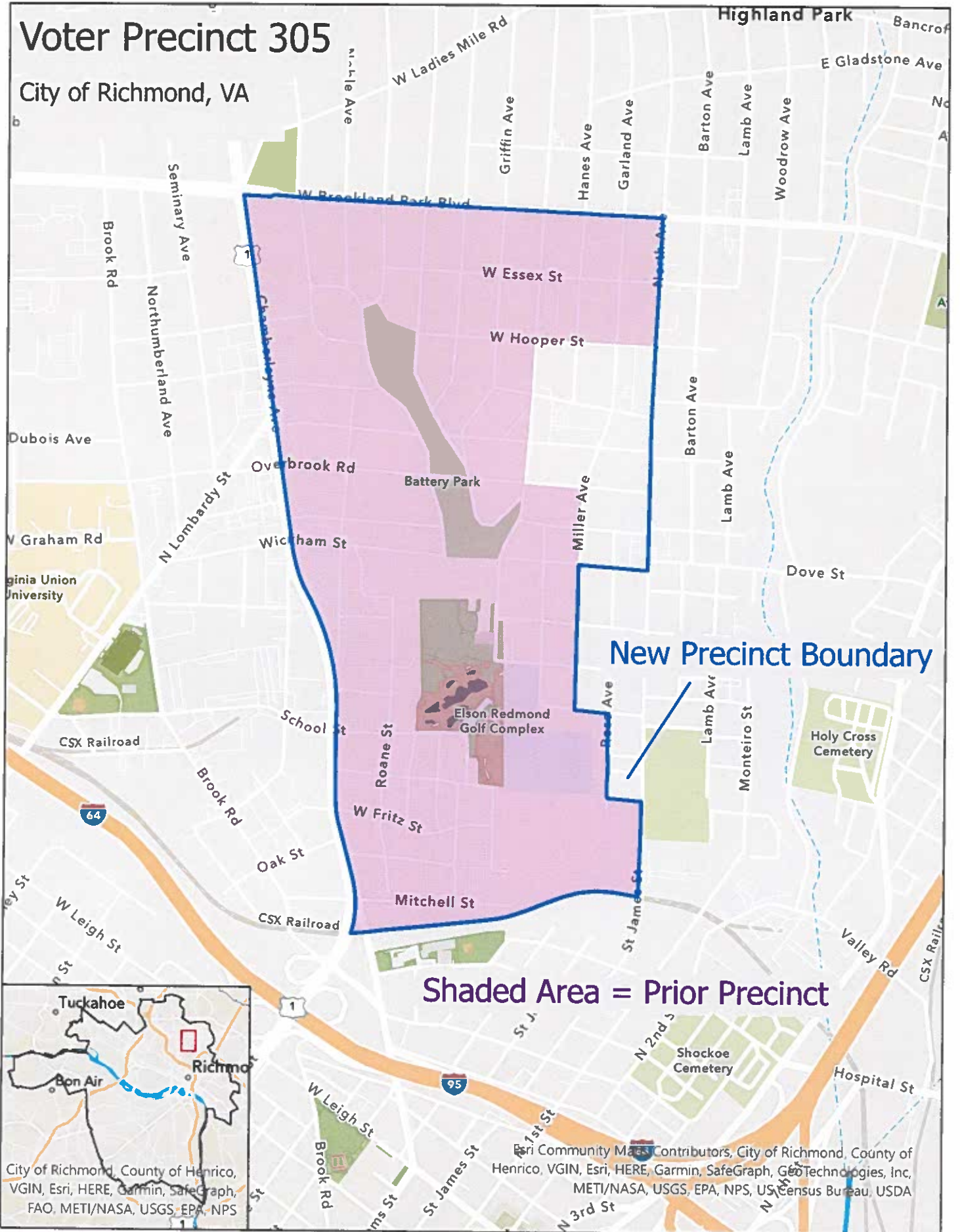
New Precinct Boundary



Esri Community Maps Contributors, City of Richmond, County of Henrico, VA, Esri, HERE, Garmin, SafeGraph, GeoTechnologies, Inc., METI/NASA, USGS, EPA, NPS, US Census Bureau, USDA

Voter Precinct 305

City of Richmond, VA



New Precinct Boundary

Shaded Area = Prior Precinct

City of Richmond, County of Henrico, VGIN, Esri, HERE, Garmin, SafeGraph, GeoTechnologies, Inc, FAO, METI/NASA, USGS, EPA, NPS, US Census Bureau, USDA

Voter Precinct 306

City of Richmond, VA

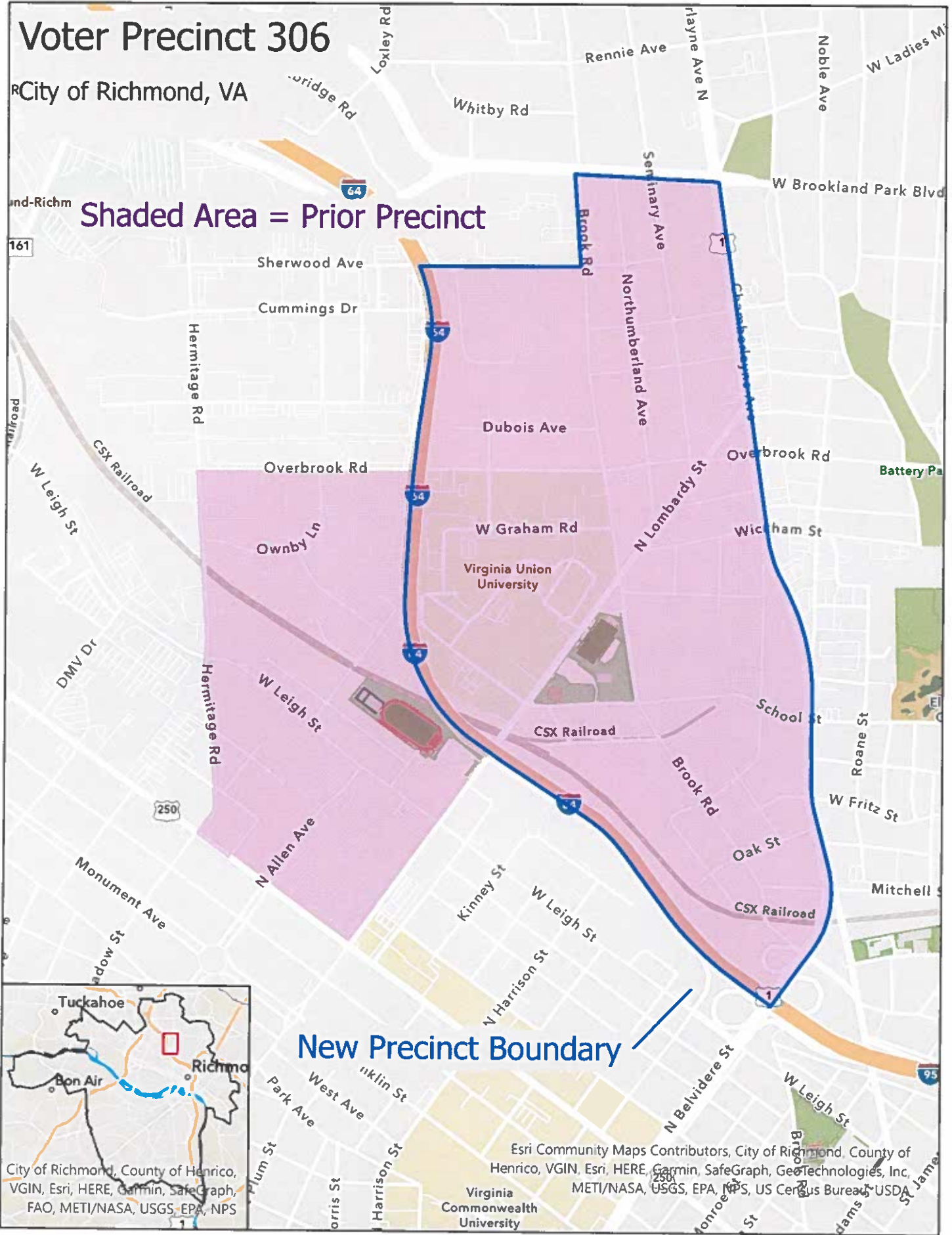
Shaded Area = Prior Precinct

New Precinct Boundary



Esri Community Maps Contributors, City of Richmond, County of Henrico, VGIN, Esri, HERE, Garmin, SafeGraph, GeoTechnologies, Inc, METI/NASA, USGS, EPA, NPS, US Census Bureau, USDA

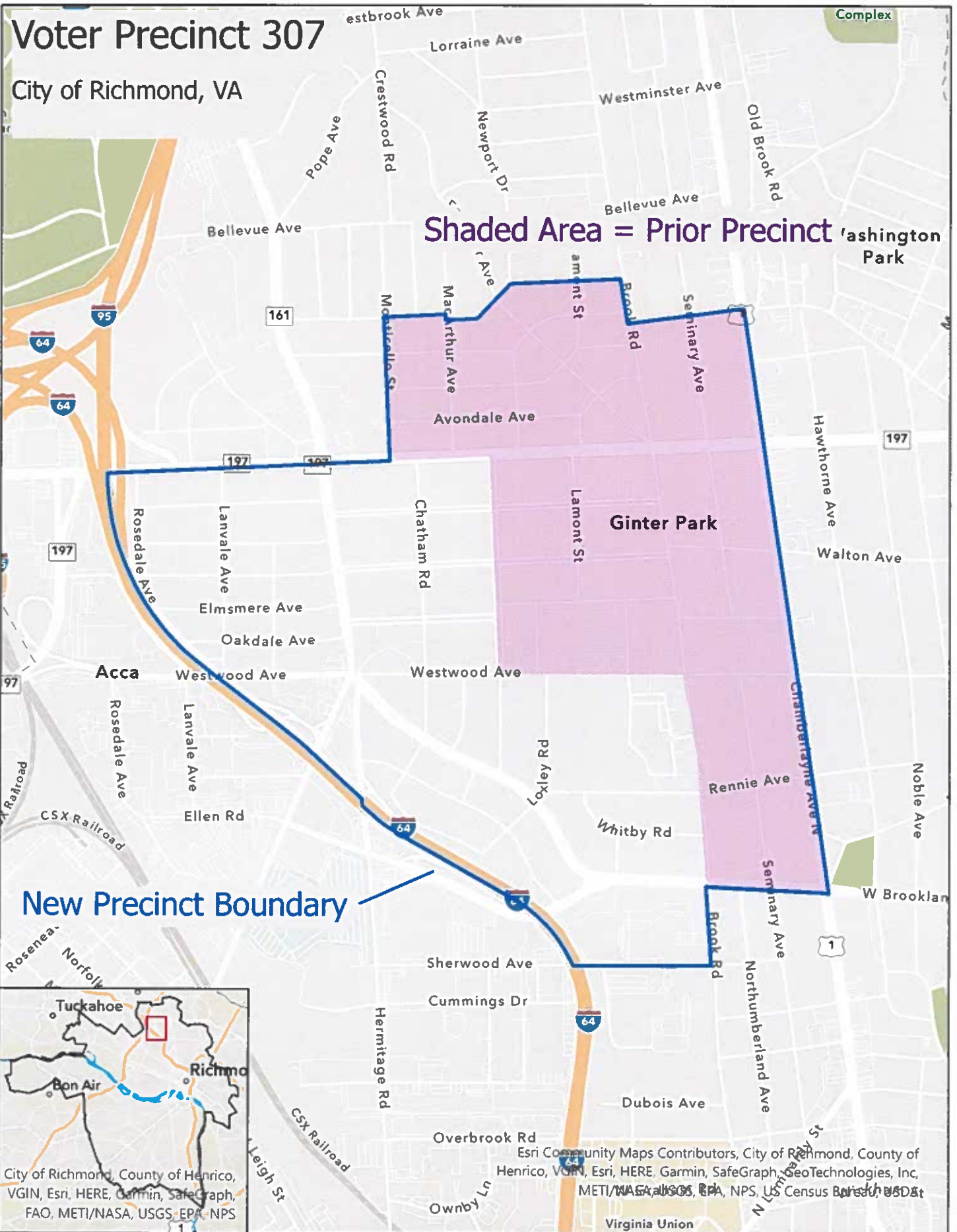
Virginia Commonwealth University



Voter Precinct 307

City of Richmond, VA

Shaded Area = Prior Precinct

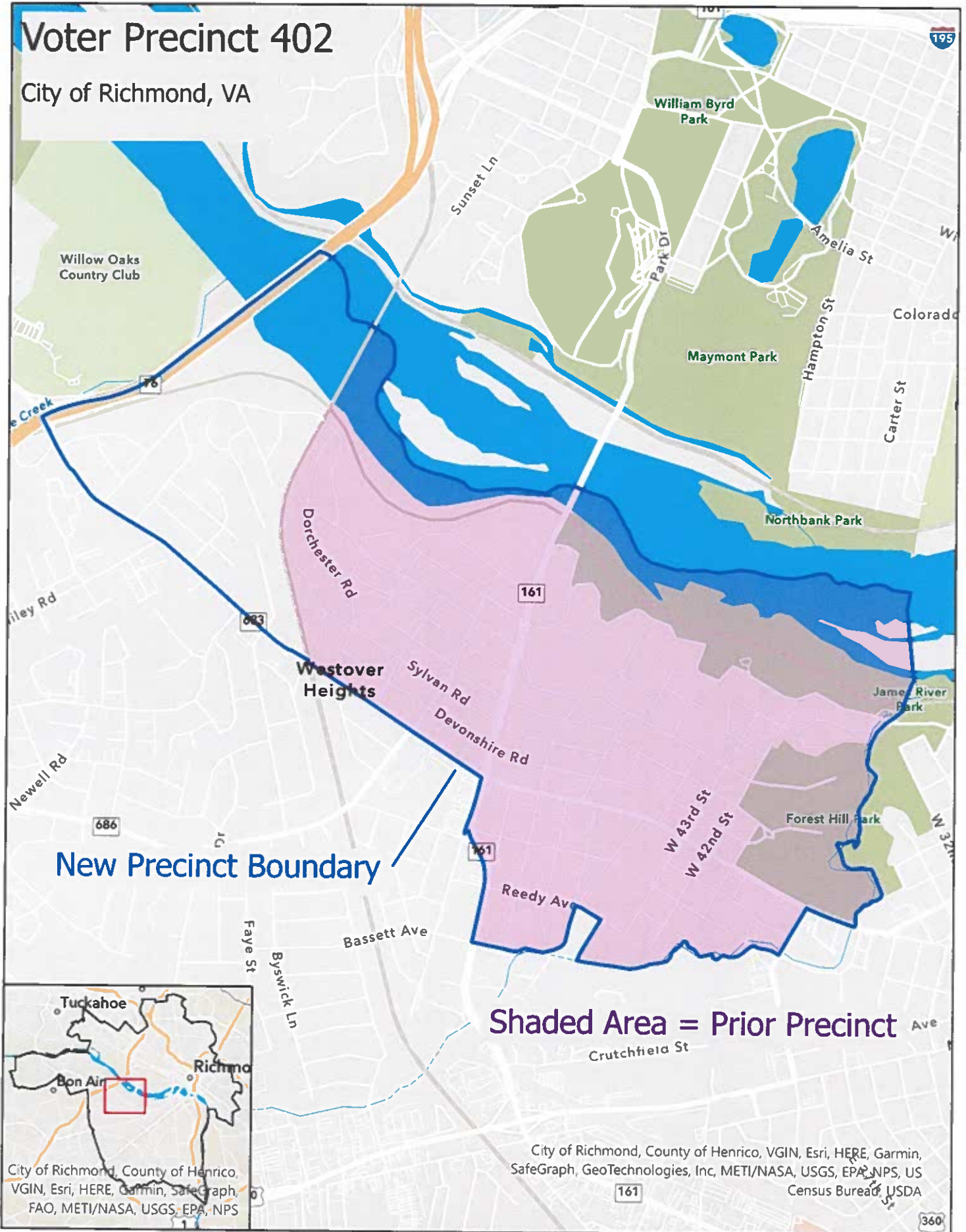


City of Richmond, County of Henrico, VGIN, Esri, HERE, Garmin, SafeGraph, GeoTechnologies, Inc, METI/NASA, USGS, EPA, NPS, US Census Bureau, USDA

Esri Community Maps Contributors, City of Richmond, County of Henrico, VGIN, Esri, HERE, Garmin, SafeGraph, GeoTechnologies, Inc, METI/NASA, USGS, EPA, NPS, US Census Bureau, USDA

Voter Precinct 402

City of Richmond, VA



New Precinct Boundary

Shaded Area = Prior Precinct

City of Richmond, County of Henrico, VGIN, Esri, HERE, Garmin, SafeGraph, GeoTechnologies, Inc, METI/NASA, USGS, EPA, NPS, US Census Bureau, USDA

City of Richmond, County of Henrico, VGIN, Esri, HERE, Garmin, SafeGraph, GeoTechnologies, Inc, METI/NASA, USGS, EPA, NPS, US Census Bureau, USDA

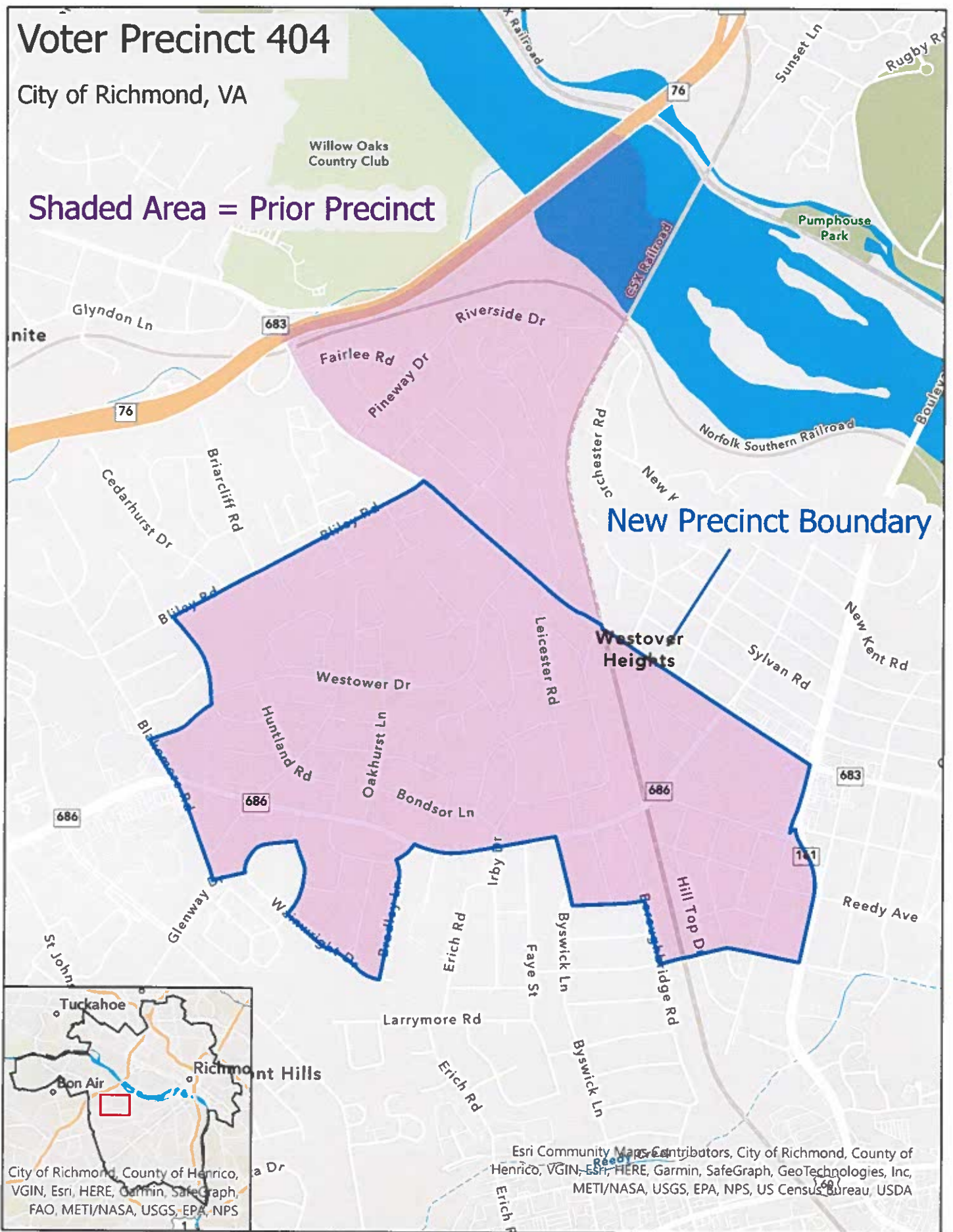
Voter Precinct 404

City of Richmond, VA

Shaded Area = Prior Precinct

New Precinct Boundary

Westover Heights



City of Richmond, County of Henrico, VGIN, Esri, HERE, Garmin, SafeGraph, FAO, METI/NASA, USGS, EPA, NPS

Esri Community Maps Contributors, City of Richmond, County of Henrico, VGIN, Esri, HERE, Garmin, SafeGraph, GeoTechnologies, Inc, METI/NASA, USGS, EPA, NPS, US Census Bureau, USDA

Voter Precinct 504

City of Richmond, VA

Shaded Area = Prior Precinct

New Precinct Boundary



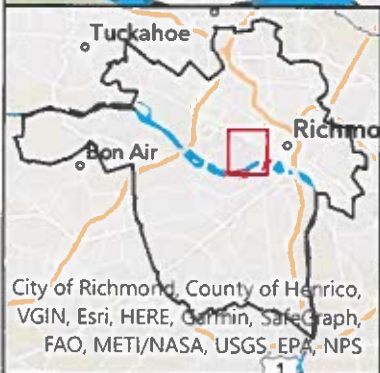
Esri Community Maps Contributors, City of Richmond, County of Henrico, VGIN, Esri, HERE, Garmin, SafeGraph, GeoTechnologies, Inc, METI/NASA, USGS, EPA, NPS, US Census Bureau, USDA

Voter Precinct 505

City of Richmond, VA

Shaded Area = Prior Precinct

New Precinct Boundary

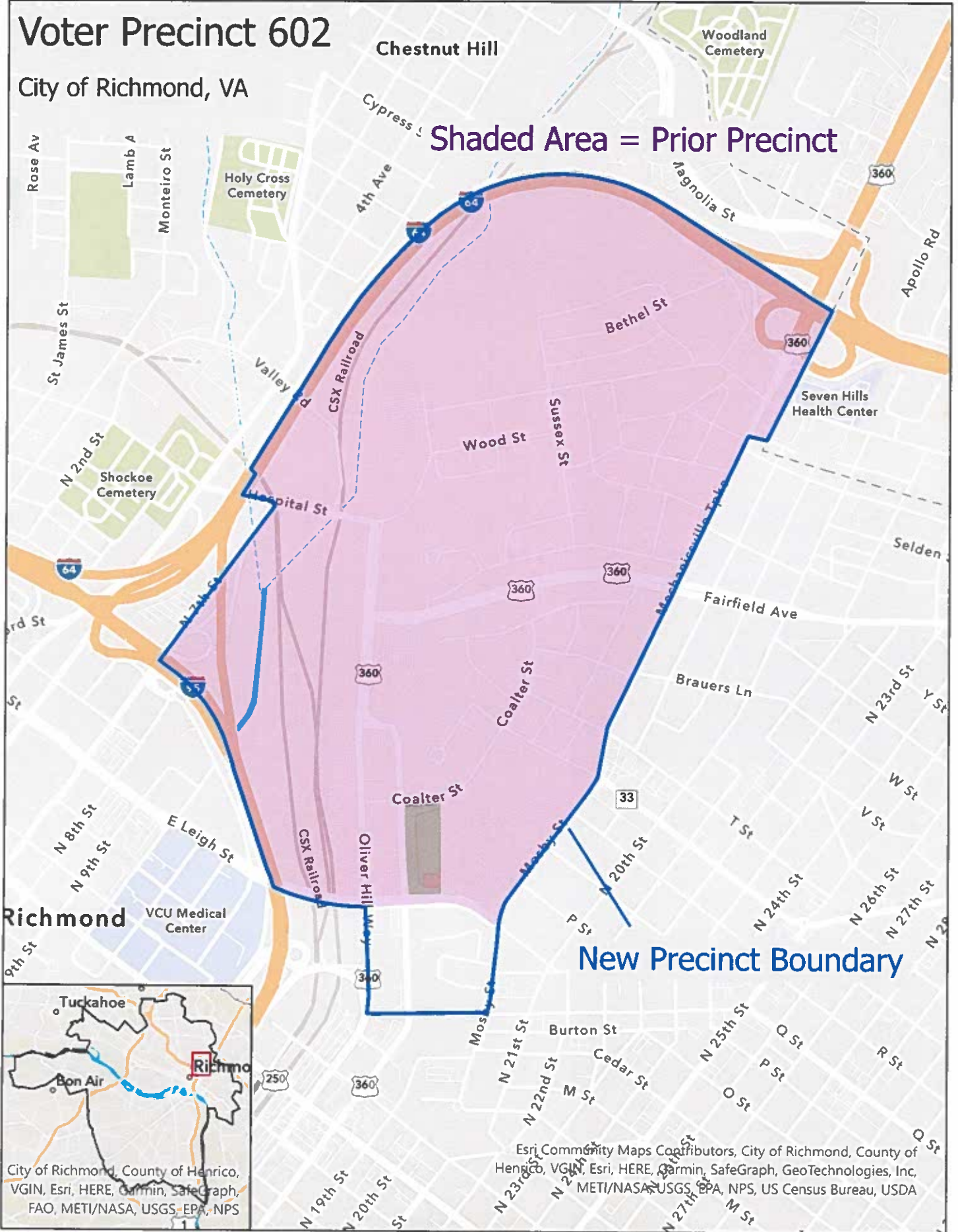


Esri Community Maps Contributors, City of Richmond, County of Henrico, VA, Esri, HERE, Garmin, SafeGraph, GeoTechnologies, Inc, METI/NASA, USGS, EPA, NPS, US Census Bureau, USDA

Voter Precinct 602

City of Richmond, VA

Shaded Area = Prior Precinct



City of Richmond, County of Henrico, VGIN, Esri, HERE, Garmin, SafeGraph, GeoTechnologies, Inc, FAO, METI/NASA, USGS, EPA, NPS

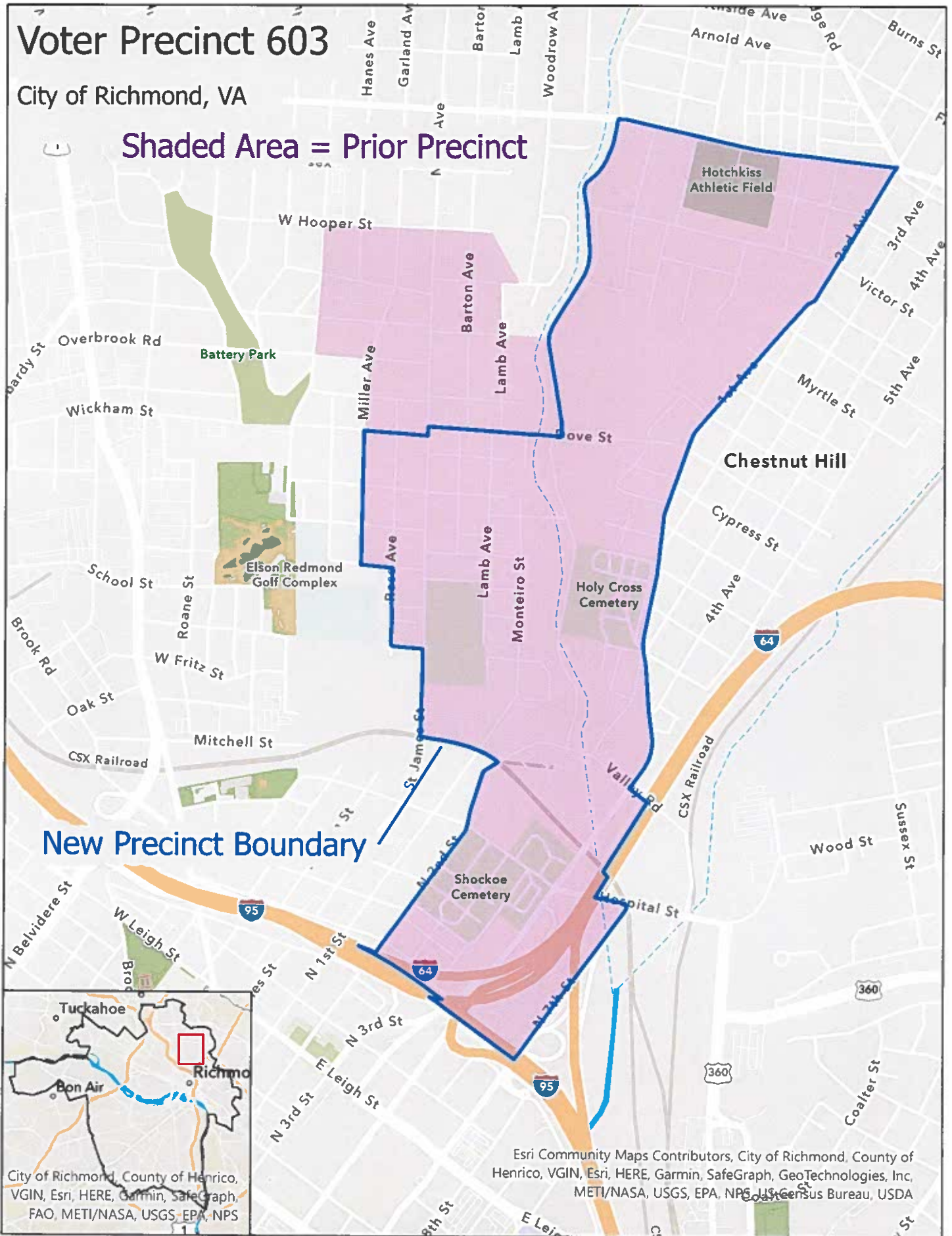
Esri, Community Maps Contributors, City of Richmond, County of Henrico, VGIN, Esri, HERE, Garmin, SafeGraph, GeoTechnologies, Inc, METI/NASA, USGS, EPA, NPS, US Census Bureau, USDA

Voter Precinct 603

City of Richmond, VA

Shaded Area = Prior Precinct

New Precinct Boundary



City of Richmond, County of Henrico, VGIN, Esri, HERE, Garmin, SafeGraph, GeoTechnologies, Inc, FAO, METI/NASA, USGS, EPA, NPS

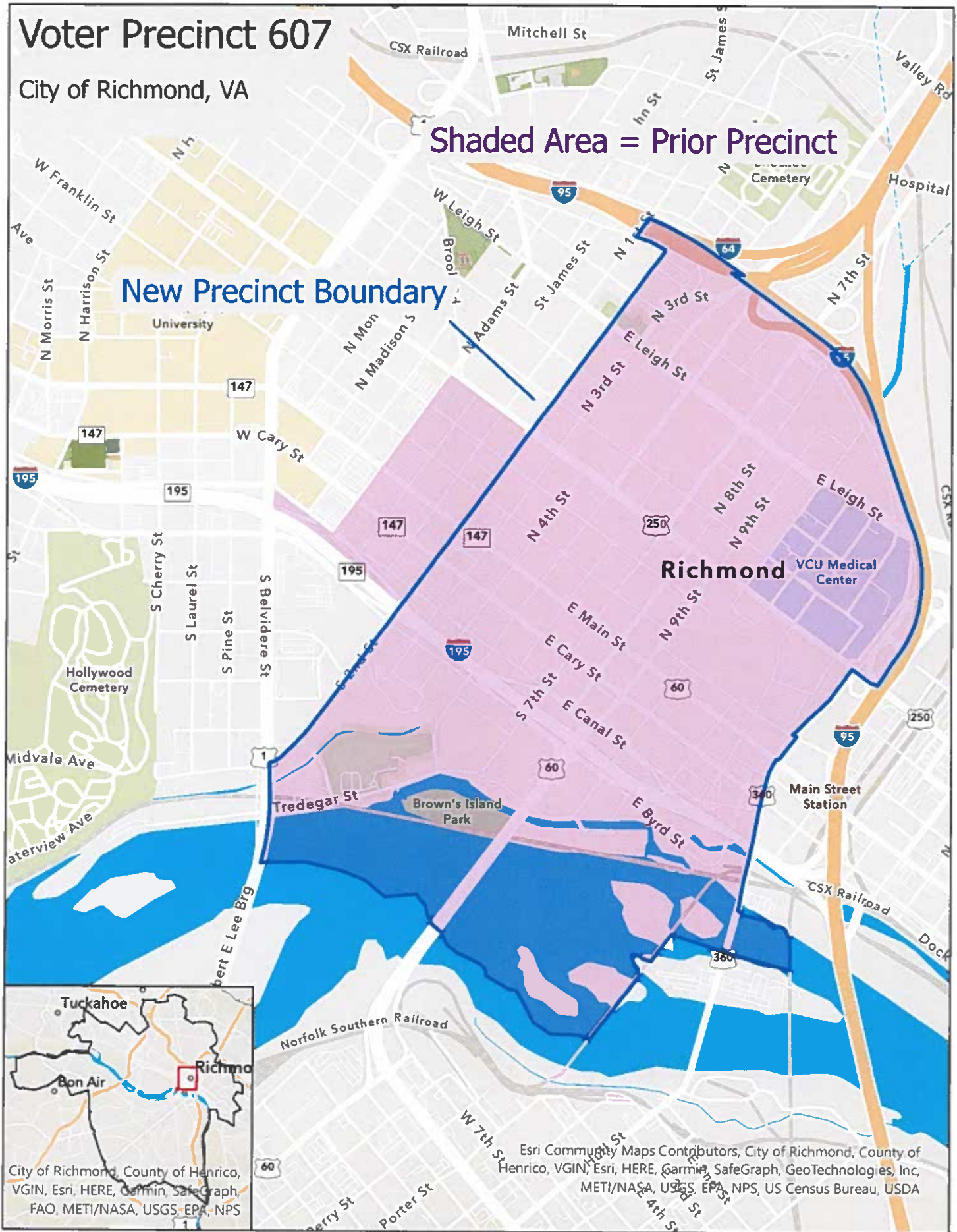
Esri Community Maps Contributors, City of Richmond, County of Henrico, VGIN, Esri, HERE, Garmin, SafeGraph, GeoTechnologies, Inc, METI/NASA, USGS, EPA, NPS, U.S. Census Bureau, USDA

Voter Precinct 607

City of Richmond, VA

Shaded Area = Prior Precinct

New Precinct Boundary



Richmond

Main Street Station

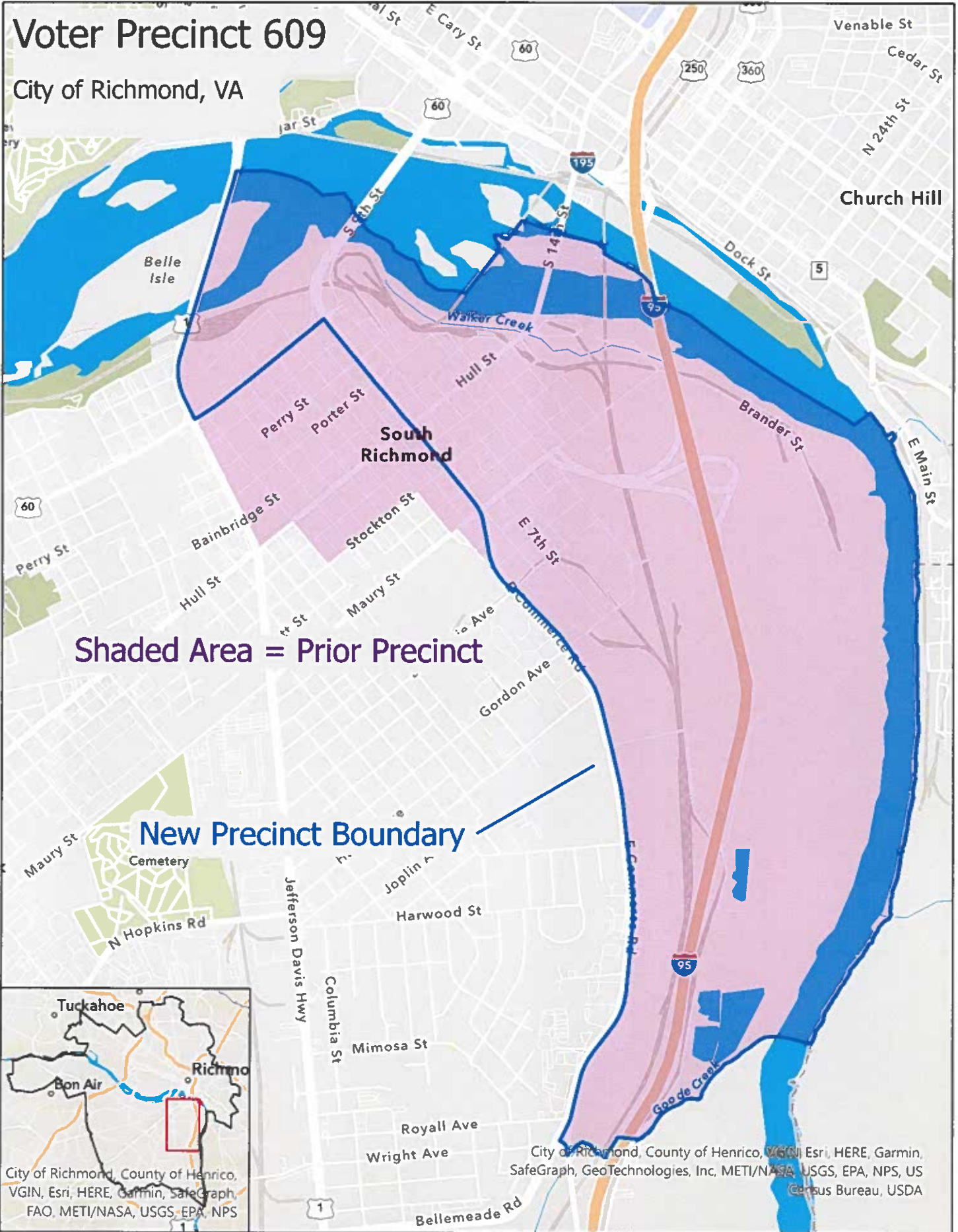
VCU Medical Center

City of Richmond, County of Henrico, VGIN, Esri, HERE, Garmin, SafeGraph, GeoTechnologies, Inc, METI/NASA, USGS, EPA, NPS, US Census Bureau, USDA

Esri Community Maps Contributors, City of Richmond, County of Henrico, VGIN, Esri, HERE, Garmin, SafeGraph, GeoTechnologies, Inc, METI/NASA, USGS, EPA, NPS, US Census Bureau, USDA

Voter Precinct 609

City of Richmond, VA



Shaded Area = Prior Precinct

New Precinct Boundary

City of Richmond, County of Henrico, VA
VGIN, Esri, HERE, Garmin, SafeGraph, FAO, METI/NASA, USGS, EPA, NPS

City of Richmond, County of Henrico, VA
VGIN, Esri, HERE, Garmin, SafeGraph, GeoTechnologies, Inc., METI/NASA, USGS, EPA, NPS, US Census Bureau, USDA

Voter Precinct 705

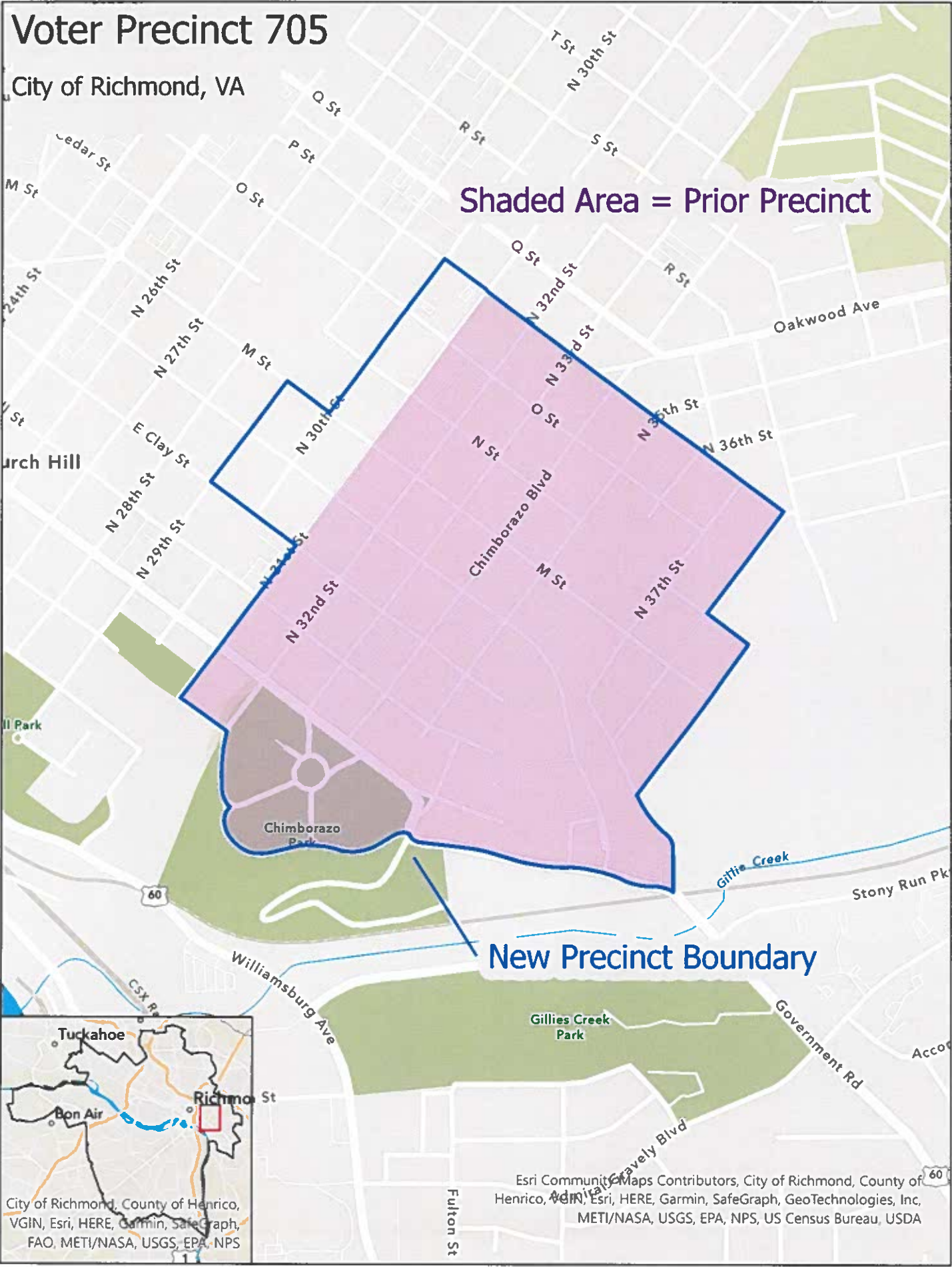
City of Richmond, VA

Shaded Area = Prior Precinct

New Precinct Boundary



Esri Community Maps Contributors, City of Richmond, County of Henrico, VA, Esri, HERE, Garmin, SafeGraph, GeoTechnologies, Inc, METI/NASA, USGS, EPA, NPS, US Census Bureau, USDA

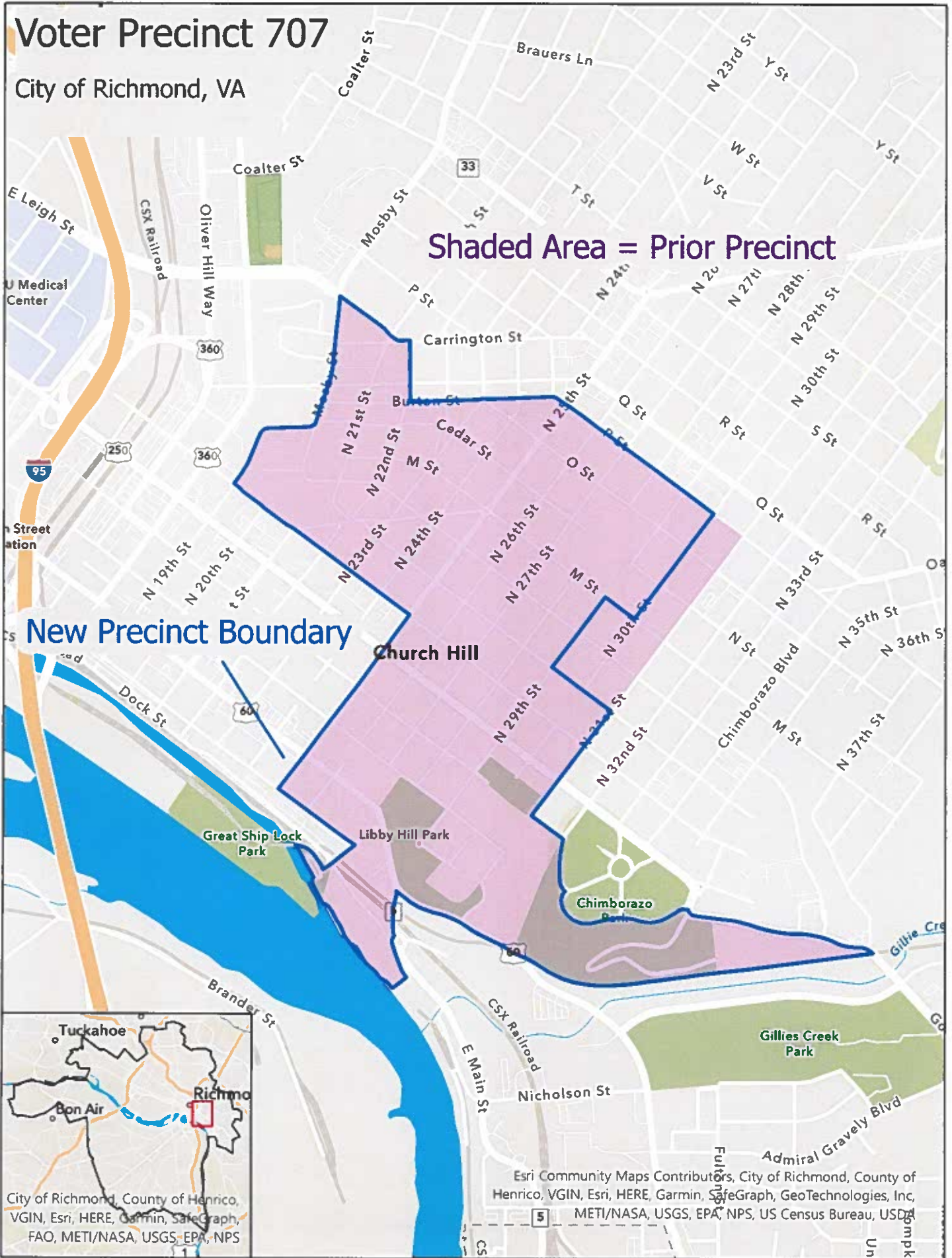


Voter Precinct 707

City of Richmond, VA

Shaded Area = Prior Precinct

New Precinct Boundary



City of Richmond, County of Henrico, VGIN, Esri, HERE, Garmin, SafeGraph, FAO, METI/NASA, USGS, EPA, NPS

Esri Community Maps Contributors, City of Richmond, County of Henrico, VGIN, Esri, HERE, Garmin, SafeGraph, GeoTechnologies, Inc, METI/NASA, USGS, EPA, NPS, US Census Bureau, USDA

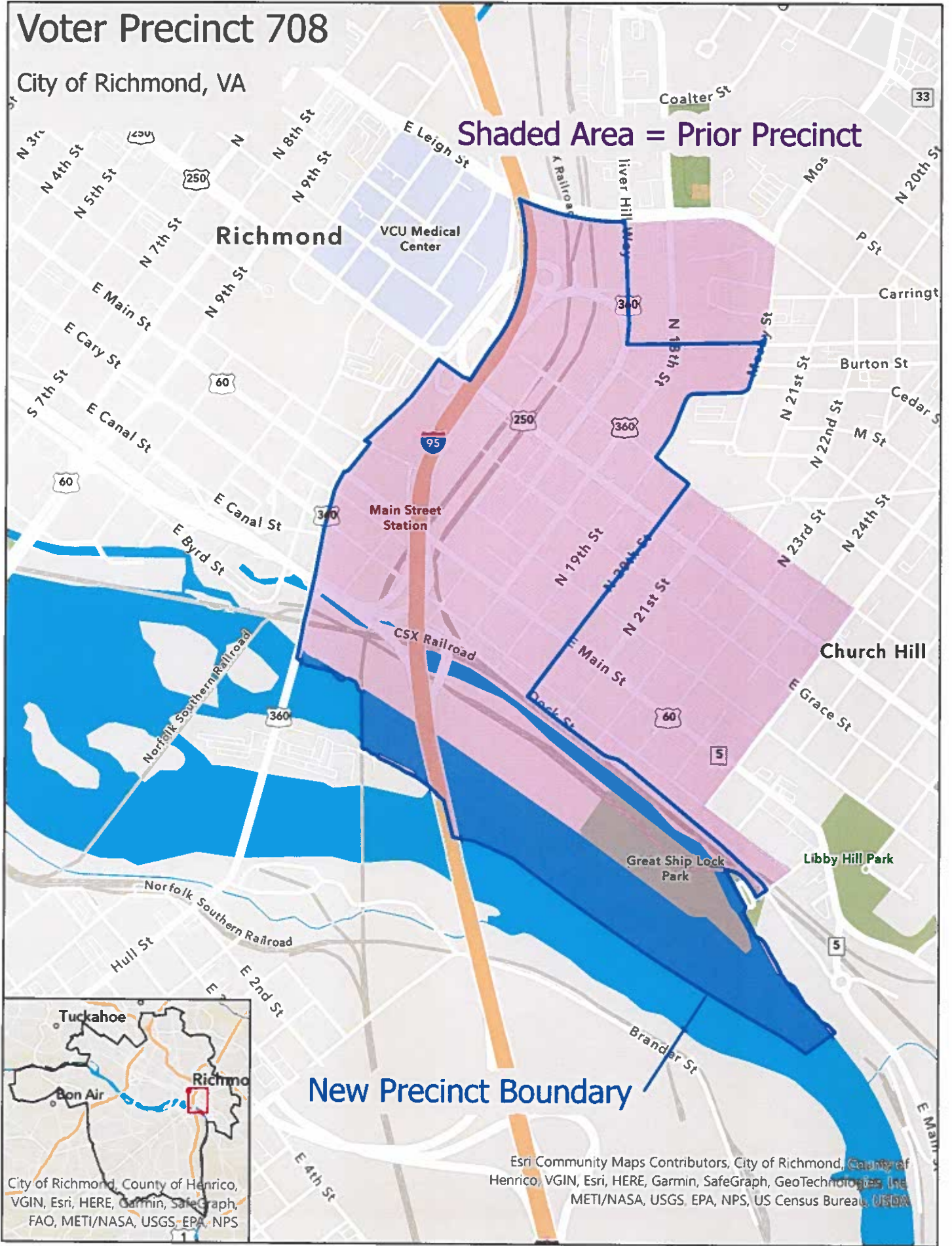
Voter Precinct 708

City of Richmond, VA

Shaded Area = Prior Precinct

New Precinct Boundary

Esri Community Maps Contributors, City of Richmond, County of Henrico, VGIN, Esri, HERE, Garmin, SafeGraph, GeoTechnologies, Inc, METI/NASA, USGS, EPA, NPS, US Census Bureau, USGS



City of Richmond, County of Henrico, VGIN, Esri, HERE, Garmin, SafeGraph, FAO, METI/NASA, USGS, EPA, NPS