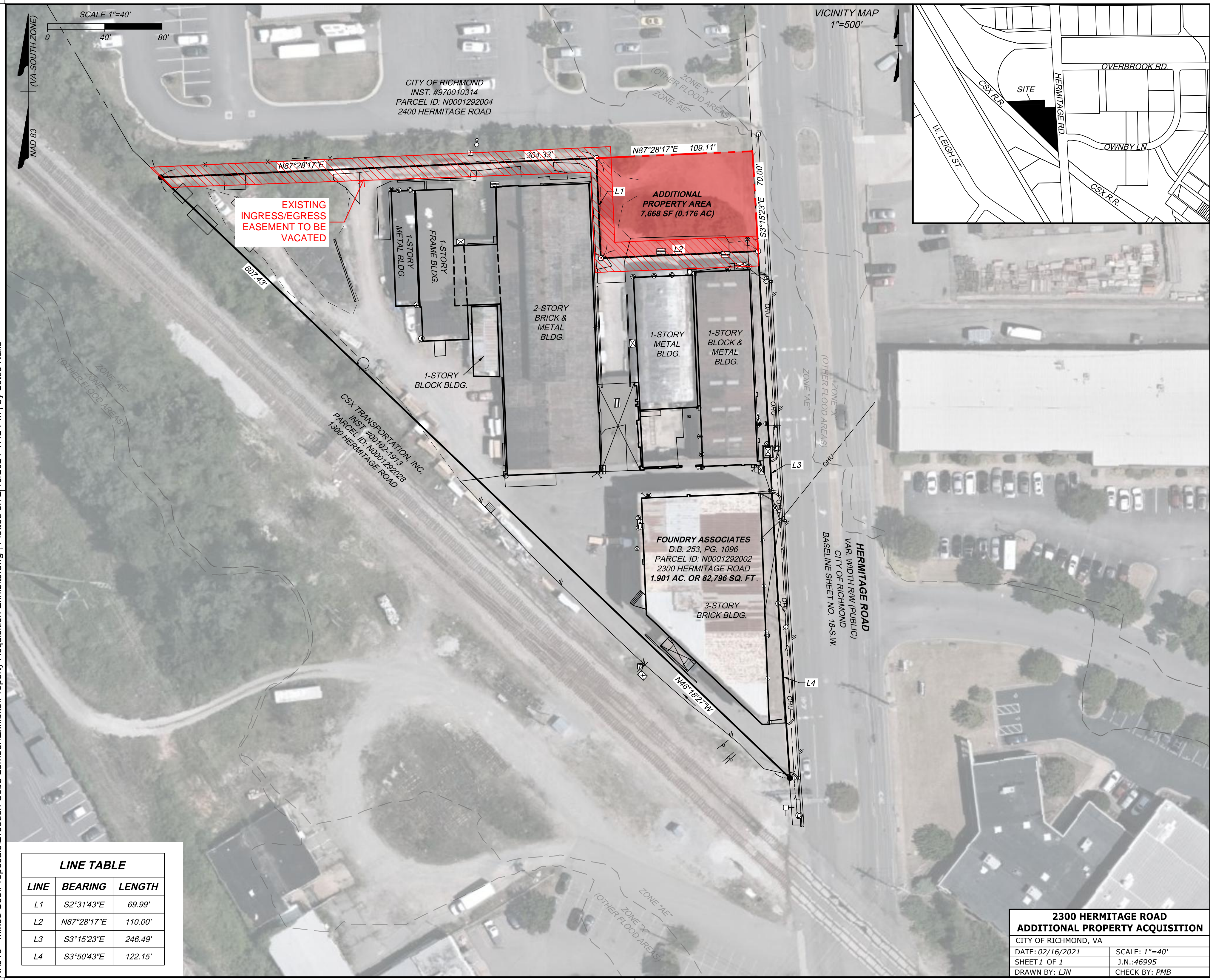


LINE TABLE		
LINE	BEARING	LENGTH
L1	S2°31'43"E	69.99'
L2	N87°28'17"E	110.00'
L3	S3°15'23"E	246.49'
L4	S3°50'43"E	122.15'



2300 HERMITAGE ROAD	
ADDITIONAL PROPERTY ACQUISITION	
CITY OF RICHMOND, VA	
DATE: 02/16/2021	SCALE: 1"=40'
SHEET 1 OF 1	J.N.:46995
DRAWN BY: LJJN	CHECK BY: PMB

YOUR VISION ACHIEVED THROUGH OURS.

THIS DRAWING PREPARED AT THE
CORPORATE OFFICE
 1001 Builders Parkway, Suite 300 | Richmond, VA 23225
 TEL: 804.200.6500 FAX: 804.560.1016 www.timmons.com

TIMMONS GROUP

Site Development | Residential | Infrastructure | Technology