



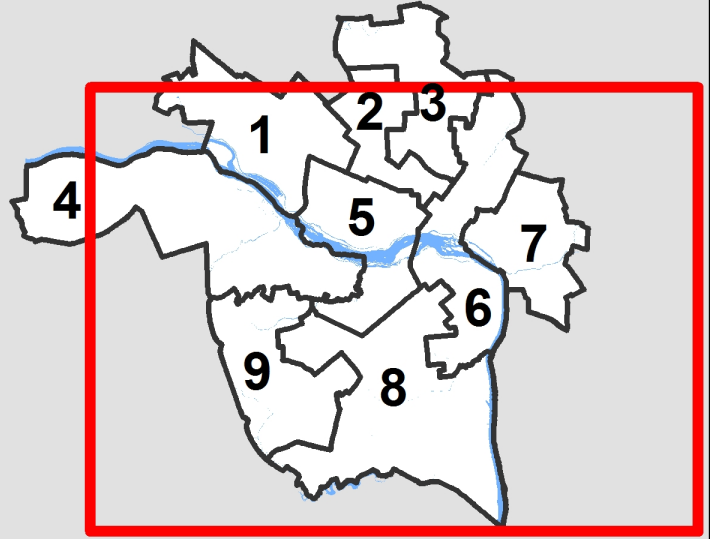
# City of Richmond Department of Planning & Development Review

## Location, Character, and Extent

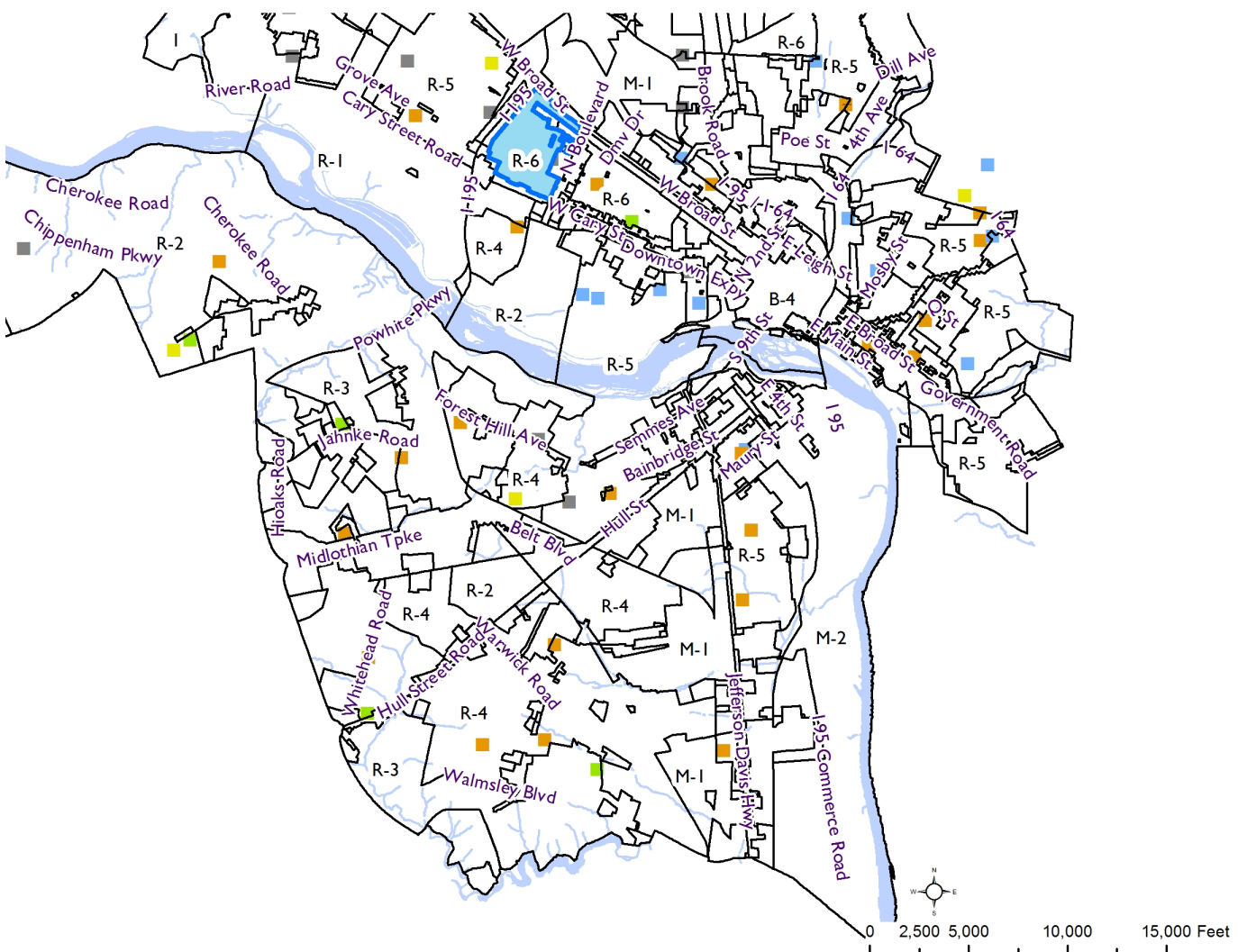
**LOCATION:** Public Safety Communications Towers

**COUNCIL DISTRICT:** 7, 9

**PROPOSAL:** Final review of three sites for new public safety communications towers



For questions, please contact Kathleen Onufer  
at 646-5207 or [Kathleen.Onufer@richmondgov.com](mailto:Kathleen.Onufer@richmondgov.com)



## City of Richmond Radio System Site Locations

Site #	Site Name	Address	New/Existing/Co-Locate/Dispatch	Google Maps
1	Prime Site - Hopkins Road	3516 N Hopkins Rd, Richmond, VA	Existing	<a href="#">37 29 56.6, -77 27 18.6</a>
2	City Hall	900 E Broad St, Richmond, VA	Existing	<a href="#">37 32 27.6, -77 25 58.7</a>
3	Fire Station 25	8800 W Huguenot Rd, Richmond, VA	Existing Co-Locate	<a href="#">37 32 21.5, -77 33 36.6</a>
4	East End	R St and P St Access Rd, Richmond, VA 23223	New	<a href="#">37 31 43.9, -77 24 01.9</a>
5	Port of Richmond	5000 Deepwater Terminal Rd, Richmond, VA 23234	New	<a href="#">37 27 53.5, 077 25 21.4</a>
6	Fire Station 23	495 LaBrook Concourse, Richmond, VA 23224	New	<a href="#">37 29 57.8, -77 30 26.1</a>
7	WTVR	3301 West Broad St, Richmond, VA 23230	Existing	<a href="#">37 33 58.6, -77 28 34.2</a>
8	Radio Shop	3502 N Hopkins Rd, Richmond, VA	Existing	<a href="#">37 30 07.7, -77 27 17.3</a>
9	VCU Dispatch	224 East Broad Street, Richmond, VA 23219	Dispatch	
10	Richmond Amb. Auth (RAA)	2400 Hermitage Rd, Richmond, VA 23220	Dispatch	
11	VA Hospital Dispatch	1201 Broad Rock Blvd, Richmond, VA 23224	Dispatch	

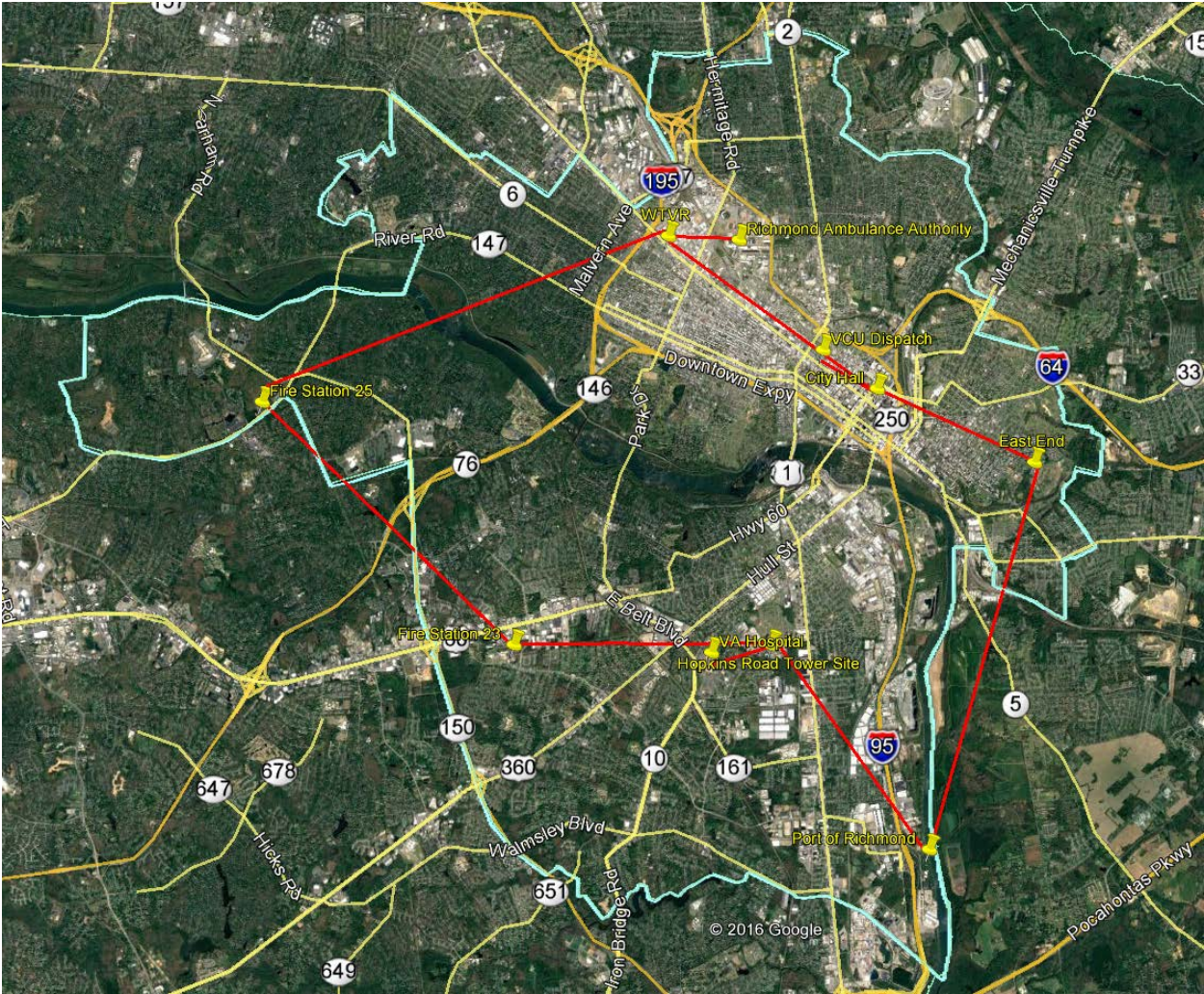
## City of Richmond Radio System Site Description

Site #	Site Name	Site Description
1	Hopkins Road	City of Richmond existing tower located at the Department of Emergency Communications. The modifications to this site will be the addition of antenna's to the tower and equipment in the equipment room
2	City Hall	City of Richmond existing tower located a top of City Hall. The modifications to the site will include the addition of antenna's and microwave to the existing tower and equipment installed in the equipment room on the 14 <sup>th</sup> Floor.
3	Fire Station 25	The City of Richmond will be Co-Locating on an existing tower that has been previously approved for Verizon Wireless and scheduled to be erected in early 2017. (not technically existing at this point but will be by the time we occupy and is already approved). The project will be adding a communications outbuilding along with an emergency generator at the site. Verizon Wireless Monopole
4	East End	The City of Richmond will be constructing a new tower and installation of communication outbuilding, along with an emergency generator. The Site is located on City property.
5	Port of Richmond	The City of Richmond will be constructing a new tower and installation of communication outbuildings, along with emergency generators. The Site is located on City property.
6	Fire Station 23	The City of Richmond will be constructing a new tower, installation of communication outbuilding and installing an emergency generator on the City property located behind the Fire Station in the rear of the maintenance facility parking lot.
7	WTVR	The City of Richmond will be co-locating on the existing tower for WTVR-TV. The modifications to the site will be adding antenna and microwave dishes to the tower and room modifications to the existing shelter at the base of the tower.
8	Radio Shop	The City of Richmond will be installing networking, console and dispatch equipment in the shop's tech. room. There will not be any exterior work done at this location.
9	VCU Dispatch	The City of Richmond will be installing networking, console dispatch equipment and external antennas at roof level for the VCU Police Department.
10	Richmond Amb. Auth (RAA)	The City of Richmond will be installing networking, console dispatch equipment and external antennas at roof level for the RAA dispatch center.

- 11 VA Hospital Dispatch The City of Richmond will be installing networking, console dispatch equipment and external antennas at roof level for the VA Hospital dispatch center.

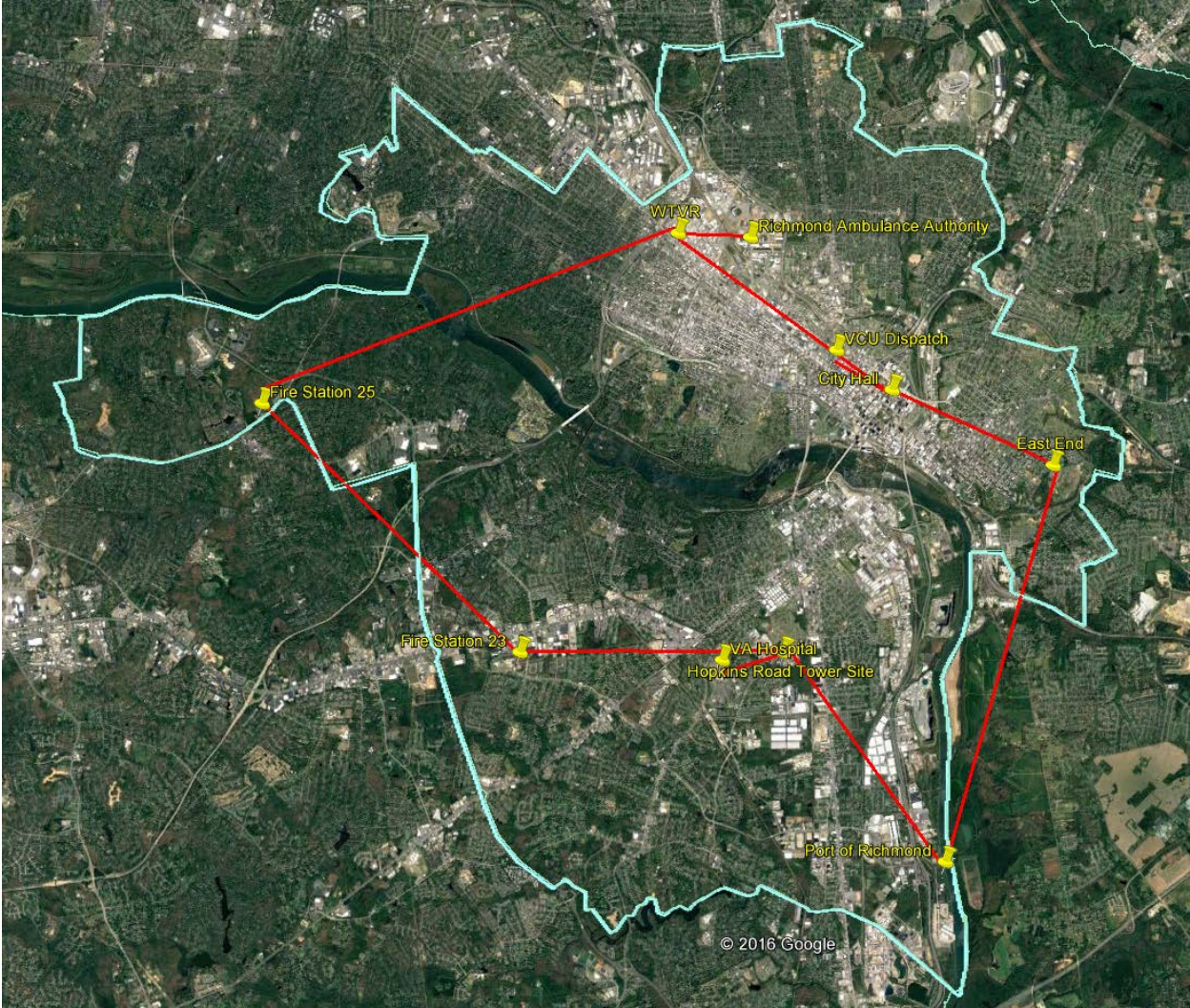


# City of Richmond Tower Locations With Roads added for reference

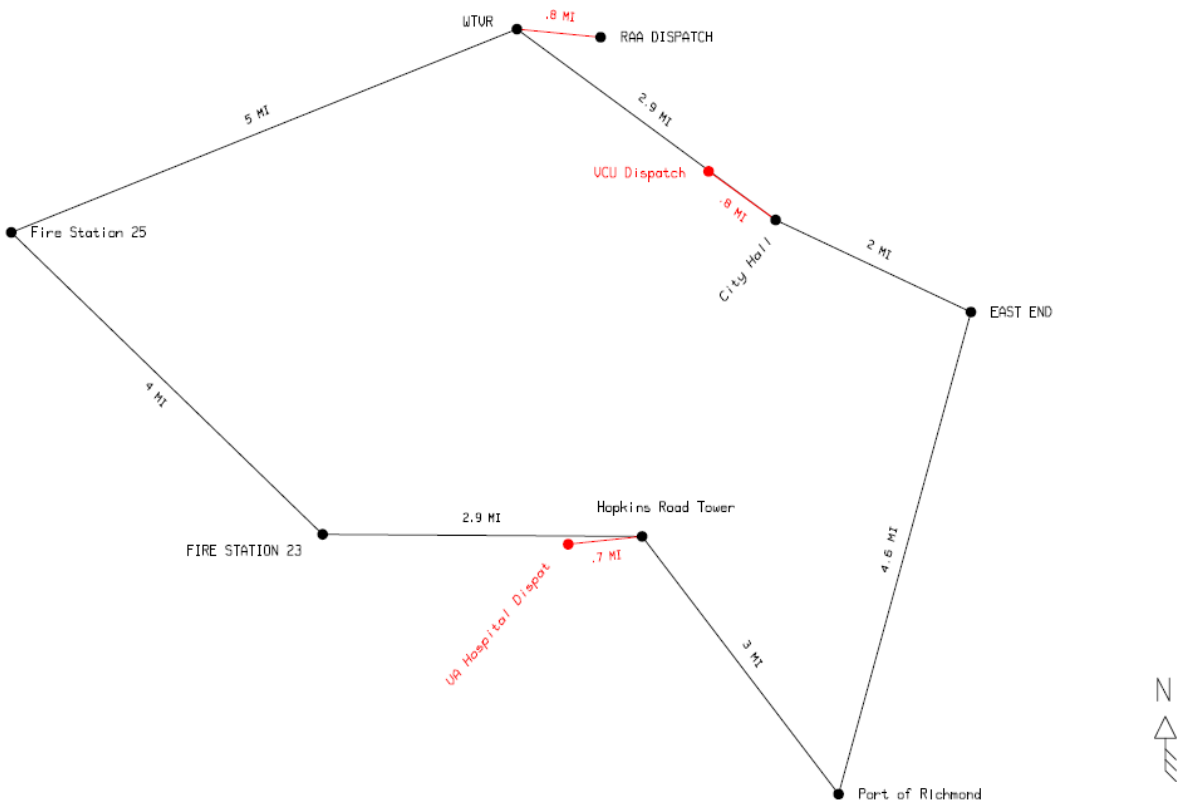




# City of Richmond Tower Locations Without Roads



# City of Richmond Microwave Layout Design



**Note:**

The design of the system for the City of Richmond was to utilize existing City owned property for the construction of the new sites, along with utilizing existing sites where possible to meet the required coverage requirements. The moving of sites from the current locations could cause changes in predicted coverage and connectivity as outlined in the contract.