



Commission of Architectural Review SUBMISSION APPLICATION

City of Richmond, Room 510 – City Hall
900 East Broad Street, Richmond, Virginia 23219
PHONE: (804) 646-6335 FAX: (804) 646-5789

12 COPIES OF SUPPORTING DOCUMENTATION ARE REQUIRED FOR PROCESSING YOUR SUBMISSION

LOCATION OF WORK: ARBNER CLAY PARK
200 W. CLAY ST (JACKSON WARD) DATE: 7/31/15

OWNER'S NAME: CITY OF RICHMOND PARKS,
RECREATION & COMMUNITY FACILITIES TEL NO.: (804) 646-5733
AND ADDRESS: 1209 ADMIRAL ST. EMAIL: BARRY.RUSSELL@
RICHMOND.GOV.COM

CITY, STATE AND ZIPCODE: RICHMOND, VA 23220

ARCHITECT/CONTRACTOR'S NAME: SCOTT WILEY
(TIMMONS GROUP) TEL. NO.: (804) 200-6424
AND ADDRESS: 1001 BOULDERS PWY EMAIL: SCOTT.WILEY@
TIMMONS.COM

CITY, STATE AND ZIPCODE: RICHMOND, VA 23225

Would you like to receive your staff report via email? Yes No

REQUEST FOR CONCEPTUAL REVIEW

I hereby request Conceptual Review under the provisions of Chapter 114, Article IX, Division 4, Section 114-930.6(d) of the Richmond City Code for the proposal outlined below in accordance with materials accompanying this application. I understand that conceptual review is advisory only.

APPLICATION FOR CERTIFICATE OF APPROPRIATENESS

I hereby make application for the issuance of a certificate under the provisions of Chapter 114, Article IX, Division 4 (Old and Historic Districts) of the Richmond City Code for the proposal outlined below in accordance with plans and specifications accompanying this application.

DETAILED DESCRIPTION OF PROPOSED WORK (Required):
STATE HOW THE DESIGN REVIEW GUIDELINES INFORM THE DESIGN OF THE WORK PROPOSED. (Include additional sheets of description if necessary, and 12 copies of artwork helpful in describing the project. The 12 copies are not required if the project is being reviewed for an administrative approval. See instruction sheet for requirements.)

THIS PROJECT INVOLVES THE RENOVATION OF ARBNER CLAY
PARK IN THE CITY OF RICHMOND'S JACKSON WARD
NEIGHBORHOOD. PLEASE REFER TO PROJECT NARRATIVE
FOR MORE DETAILED INFORMATION.

Signature of Owner or Authorized Agent: X [Signature]
Name of Owner or Authorized Agent (please print legibly): Barry Russell

(Space below for staff use only)
RECEIVED
Received by Commission Secretary _____ APPLICATION NO. _____
DATE JUL 31 2015 2:01 SCHEDULED FOR _____



Abner Clay Park Renovations: Commission for Architectural Review Narrative

Purpose of the Project:

The purpose of this project is to revitalize Abner Clay Park and reenergize the surrounding Jackson Ward neighborhood. As the park ages, the condition of the paving and landscape are declining and the park has become underutilized for such a large city property in the heart of this historic community.

Project Background

In 2011, the Historic Jackson Ward Association and the City of Richmond's Department of Parks, Recreation, and Community Facilities engaged the Community Design Assistance Center's (Blacksburg, VA) services in an effort to study the neighborhood and assess the needs for Abner Clay Park, ultimately putting forth a conceptual master plan.

More recently, the Parks and Recreation Department hired the Timmons Group's Landscape Architects and Engineers to revisit the master plan and proceed with construction documents that will go out to bid when funding goals are met.

Numerous stakeholder workshops as well as several Historic Jackson Ward Association meetings have been held to assess the programming for the park. Schematic alternatives were presented to these organizations and many concepts reviewed. Ultimately, the schematic plans were melded into a final Master Plan that reflects current aspirations of the community, the Historic Jackson Ward Association, compliments the Black History Museum renovations, and includes areas for public art and sculpture.

The master plan that accompanies this submission is a result of numerous iterations, and has been approved by the Jackson Ward Community Association, the City of Richmond's Parks and Recreation Department, and the Commission for Architectural Review conceptual process.

Description of Construction Program

The construction program will include minor utility improvements, sidewalk and plaza work, athletic field and basketball court construction, small retaining wall and sitting wall work, a pergola structure, and landscaping improvements.



Master Plan Program elements include:

- Historic Jackson Ward Gateway – small seat wall and reflection area at the intersection of Brook Rd. and Leigh St. where a historical marker commemorates the city of Richmond’s first African American police officers
- Historic Walk - potential partnering with the Black History Museum for design and implementation in the future
- Two (2) Play Areas with age appropriate play equipment (ages 2-5 & 5-12)
- One (1) Multi-use Field that meets requirements for football recreation league play
- One (1) Basketball Court
- Central Plaza & Water Feature
- Formal Circular Lawn area with benches
- Terraced lawn area & Pavilion
- One (1) Pergola Structure designed by Baskervill
- 4’-5’ tall Retaining Wall along Brook Rd.
- 18” high Seat Walls at Plaza & Water Feature
- Brick Sidewalks/Walking Trails
- Landscaping
- Black Fencing at Basketball Court
- City Standard Site furnishings - benches, trash receptacles, bicycle racks
- Period Style pedestrian lighting to reflect Greek Revival, Italianate, & Queen Anne style Architecture
- Existing water fountain and select trees to remain
- Existing park sign relocated for better visibility
- One (1) Dog Park divided into two sections for small and large dogs

Description of Construction Sequence

1. Demolition of aging park elements and trees
2. Construction of retaining wall and rough grading
3. Construction of utility infrastructure and sub-surface improvements
4. Construction of seat walls, brick and concrete paving, and playground and basketball court surfaces
5. Installation of fencing, furnishings, play equipment, and landscaping
6. Final grading work and seeding

Projected Budget

While formal costing has yet to be completed, the anticipated construction cost for this project is between 1.5 and 2 million dollars.



Project Compliance with Design Review Guidelines for Richmond's Old and Historic Districts

Abner Clay Park has existed for decades and is proudly situated amidst the Historic Jackson Ward community. Jackson Ward has hosted the likes of Bill “Bojangles” Robinson, Duke Ellington, Maggie Walker, and generations of African American who worked on the “Wall Street of Black America.”

With such a great historic significance, the park’s renovation will be sensitive to preserving the materials and integrity of the historic district.

- Street lights will remain in place and interior park lighting will meet minimum safety standards and will be coordinated with the City of Richmond Parks and Recreation Department. These fixtures will be ornamental in nature and fit within the context of the neighborhood.
- City approved brick walks will define the major circulation throughout the park and will meet all regulations for accessibility throughout. Brick walks will be herringbone patterned with border courses to define the edges and transitions, in keeping with the brick walkways seen throughout the neighborhood.
- The pergola and retaining/seat walls will reflect period style for the Jackson Ward Historic District. The pergola will be constructed of steel and wood, while the retaining wall will be brick faced with a black steel handrail/ fence on top.
- Site furnishings are selected to compliment the context of the neighborhood, utilizing black finishes on period appropriate selections.
- Black vinyl coated chain-link fencing will be used to surround the basketball court and match the color of other furnishings within the park. The fence will be taller (12'-16') around the ends of the court and lower (4'-6') around the sides.
- The plaza water feature will be incorporated into colored concrete paving with trench drains to collect and recycle water.
- Public Art and Sculpture will be pursued for installation within the park. The art selection, location, fabrication, and installation will be coordinated with the Richmond Public Arts Commission.
- The playground will feature new and exciting equipment, with a simple color scheme as not to detract from the historic nature of the park. Two separate play areas will host children ages two to five and ages five to twelve.
- Abner Clay Park will be revitalized and remain as a critical gathering place for the Jackson Ward and surrounding communities. The “Down Home Family Reunion” and other groups will continue to use the field and new pavilion space for large gatherings.



Project Budget and Funding Sources

The City has allocated funding for the design of the park and paid for construction documents and is pursuing other funding sources to establish a construction plan. Money has been set aside in the city budget for a portion of this work but much more is needed before construction can commence. CAR approval of this exciting project will release the design team into the next phase in order to pursue Planning Commission Approvals, and will allow the city to continue to push funding opportunities.

Estimated Construction Start Date

The construction start date depends entirely on obtaining project funding but it can be assumed that the best case scenario for a construction start date will begin in Spring of 2017.

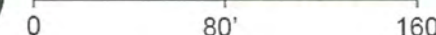


ABNER CLAY PARK - OVERALL PLAN

CAR FINAL SUBMISSION, AUGUST 25, 2015



SCALE 1" = 80'

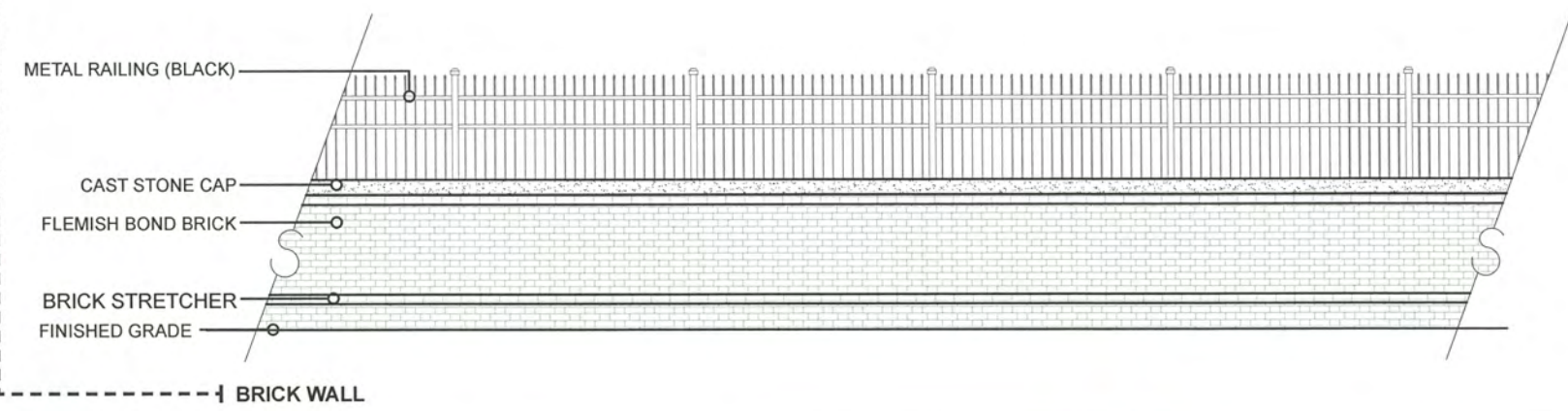


W. LEIGH STREET



PAVING MATERIAL SCHEDULE		
KEY	TYPE	DETAILS
	BRICK PAVERS-CITY OF RICHMOND APPROVED	GLEN GERY (4" X 8") MODEL: EXTRUDED, FLASH PAVER PATTERN: HERRINGBONE COLOR: FULL-RANGE
	BRICK BANDING-CITY OF RICHMOND APPROVED	GLEN GERY (4" X 8") MODEL: EXTRUDED, FLASH PAVER PATTERN: STACKED BOND COLOR: FULL-RANGE
	POURED IN PLACE RUBBER SURFACING	SURFACE AMERICA COLOR: EGGSHELL
	POURED IN PLACE RUBBER SURFACING	SURFACE AMERICA COLOR: DARK GRAY
	POURED IN PLACE RUBBER SURFACING	SURFACE AMERICA COLOR: HUNTER GREEN
	CONCRETE PAVING	CROMIX ADMIXTURE COLOR: WINTER BEIGE
	CONCRETE PAVING	CROMIX ADMIXTURE COLOR: FRENCH GRAY
	CONCRETE PAVING	STANDARD CONCRETE SIDEWALK MIX COLOR: TYPICAL

	LAWN	
	FIELD LAWN	
	COBBLESTONE PAVING	CITY OF RICHMOND STANDARD
	ASPHALT BASKETBALL COURT	COATED WITH COLOR
	POURED IN PLACE CONCRETE STEPS	STANDARD CONCRETE



ABNER CLAY PARK - LAYOUT & MATERIALS PLAN

CAR FINAL SUBMISSION, AUGUST 25, 2015





PAVING MATERIAL SCHEDULE		
KEY	TYPE	DETAILS
	BRICK PAVERS- CITY OF RICHMOND APPROVED	GLEN GERY (4" X 8") MODEL: EXTRUDED, FLASH PAVER PATTERN: HERRINGBONE COLOR: FULL-RANGE
	BRICK BANDING- CITY OF RICHMOND APPROVED	GLEN GERY (4" X 8") MODEL: EXTRUDED, FLASH PAVER PATTERN: STACKED BOND COLOR: FULL-RANGE
	POURED IN PLACE RUBBER SURFACING	SURFACE AMERICA COLOR: EGGSHELL
	POURED IN PLACE RUBBER SURFACING	SURFACE AMERICA COLOR: DARK GRAY
	POURED IN PLACE RUBBER SURFACING	SURFACE AMERICA COLOR: HUNTER GREEN
	LAWN	
	FIELD LAWN	



SITE ELEMENTS

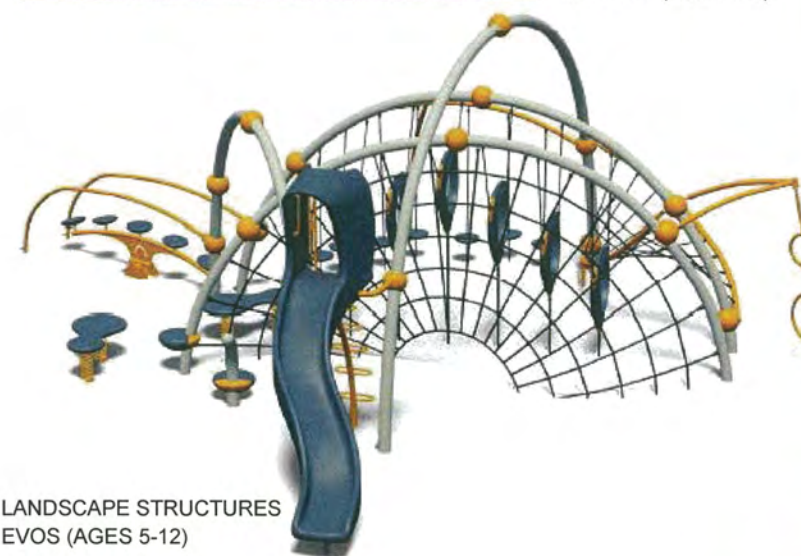
- 1) Play Equipment (Ages 2-5)
- 2) Play Equipment (Ages 5-12)
- 3) Kiddie Track
- 4) Trash cans (2)
- 5) Benches (6)
- 6) Concrete Edge

NOTE

*Color of both play structures to be similar to gray/yellow/navy as shown in the image to right



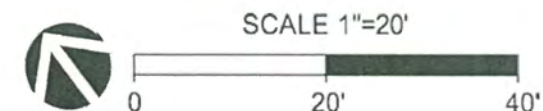
LANDSCAPE STRUCTURES
WEEVOS (AGES 2-5)



LANDSCAPE STRUCTURES
EVOS (AGES 5-12)

ABNER CLAY PARK - PLAYGROUND LAYOUT

CAR FINAL SUBMISSION, AUGUST 25, 2015





PAVING MATERIAL SCHEDULE		
KEY	TYPE	DETAILS
	BRICK PAVERS-CITY OF RICHMOND APPROVED	GLEN GERY (4" X 8") MODEL: EXTRUDED, FLASH PAVER PATTERN: HERRINGBONE COLOR: FULL-RANGE
	BRICK BANDING-CITY OF RICHMOND APPROVED	GLEN GERY (4" X 8") MODEL: EXTRUDED, FLASH PAVER PATTERN: STACKED BOND COLOR: FULL-RANGE
	CONCRETE PAVING	CROMIX ADMIXTURE COLOR: WINTER BEIGE
	CONCRETE PAVING	CROMIX ADMIXTURE COLOR: FRENCH GRAY
	CONCRETE PAVING	STANDARD CONCRETE SIDEWALK MIX COLOR: TYPICAL
	LAWN	
	FIELD LAWN	
	ASPHALT BASKETBALL COURT	COATED WITH COLOR

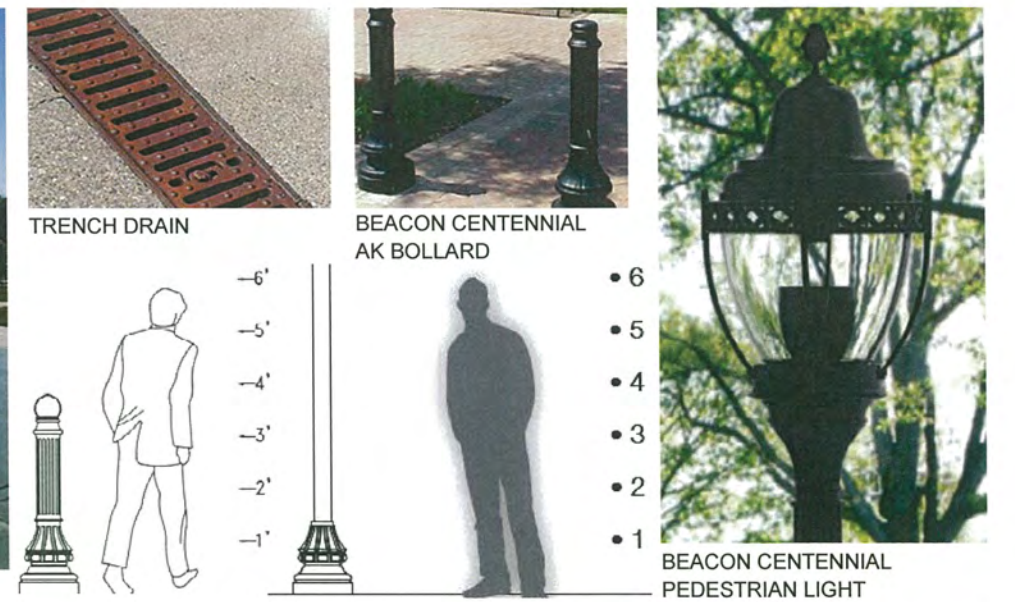


SITE ELEMENTS

- 1) Seat Walls - 18" HT.
- 2) Spray Nozzles
- 3) Spray Nozzles
- 4) Fountain Vaults
- 5) Basketball Court
- 6) Pedestrian Scale Lighting
- 7) Bike Racks
- 8) Bollards
- 9) Trench Drain



SPLASH PAD



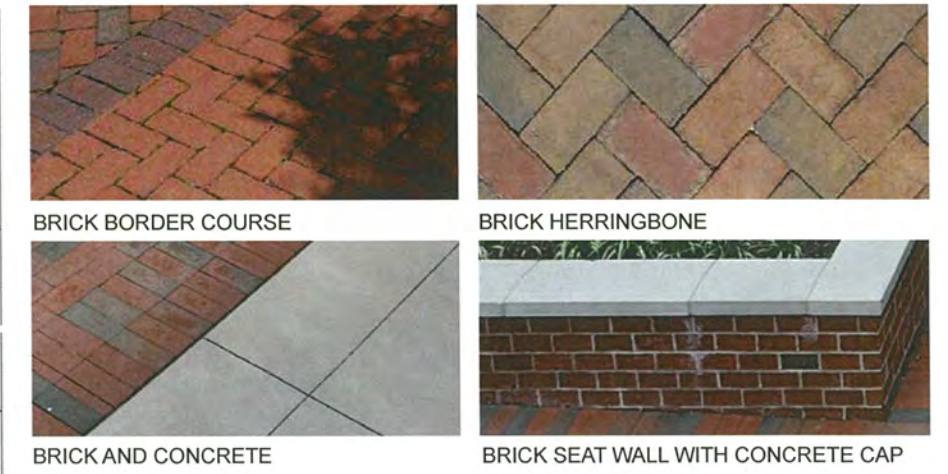
ABNER CLAY PARK - SPLASH PAD LAYOUT

CAR FINAL SUBMISSION, AUGUST 25, 2015



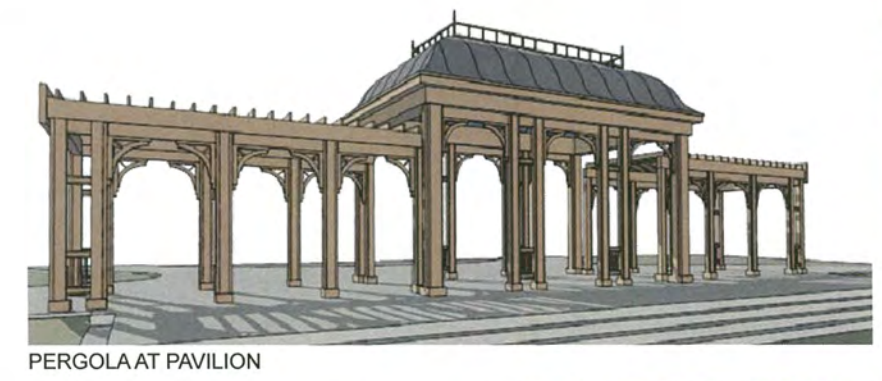


PAVING MATERIAL SCHEDULE		
KEY	TYPE	DETAILS
	BRICK PAVERS- CITY OF RICHMOND APPROVED	GLEN GERY (4" X 8") MODEL: EXTRUDED, FLASH PAVER PATTERN: HERRINGBONE COLOR: FULL-RANGE
	BRICK BANDING- CITY OF RICHMOND APPROVED	GLEN GERY (4" X 8") MODEL: EXTRUDED, FLASH PAVER PATTERN: STACKED BOND COLOR: FULL-RANGE
	LAWN	
	FIELD LAWN	
	ASPHALT BASKETBALL COURT	COATED WITH COLOR
	POURED IN PLACE CONCRETE STEPS	STANDARD CONCRETE

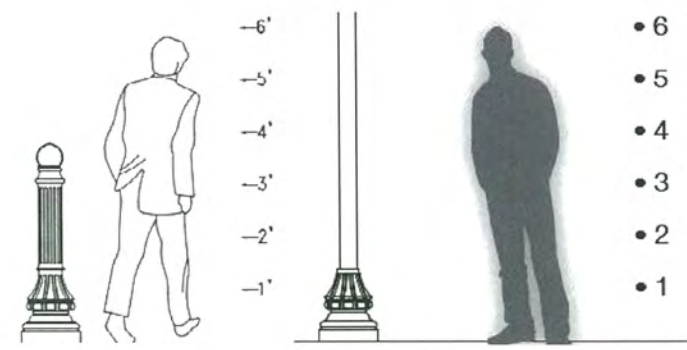


- SITE ELEMENTS**
- 1) Concrete Stairs
 - 2) Pavilion w/ Pergola
 - 3) Benches (5)
 - 4) Formal Lawn
 - 5) Asphalt Basketball Court
 - 6) Pedestrian Scale Lighting
 - 7) Bike Racks
 - 8) Bollards

KENNETH LYNCH BENCH VICTOR STANLEY TRASH CAN VICTOR STANLEY BIKE RACK



PERGOLA AT PAVILION



BEACON CENTENNIAL AK BOLLARD



BEACON CENTENNIAL PEDESTRIAN LIGHT

ABNER CLAY PARK - PAVILION LAYOUT

CAR FINAL SUBMISSION, AUGUST 25, 2015

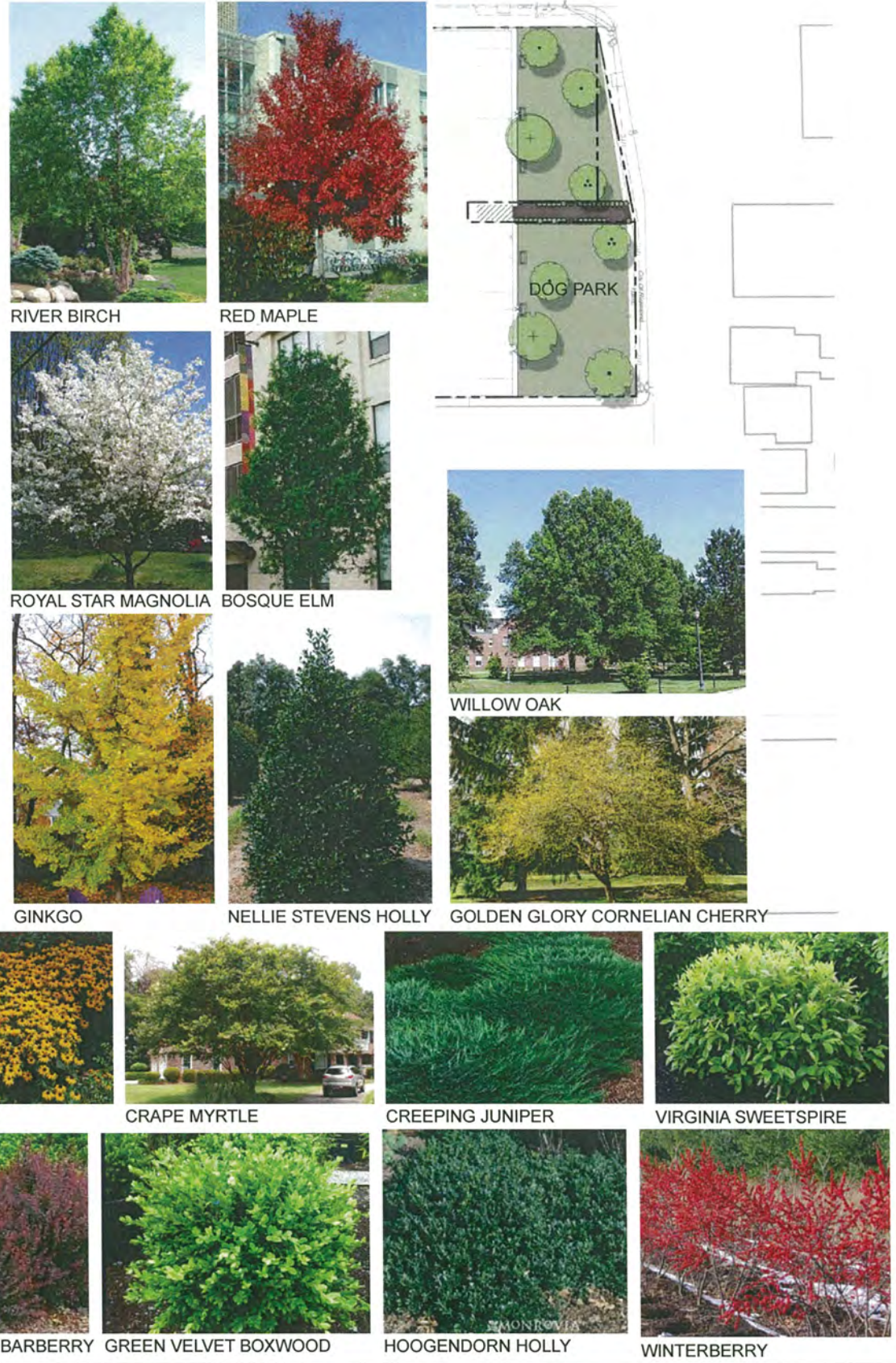




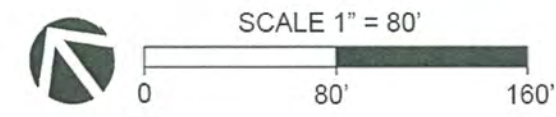
PLANT SCHEDULE

TREES	QTY	COMMON NAME
	4	RED MAPLE
	19	BOWHALL MAPLE
	5	RED SUNSET MAPLE
	5	HERITAGE RIVER BIRCH
	7	PYRAMIDAL EUROPEAN HORNBEAN
	5	PRINCETON SENTRY GINKGO
	8	TULIP TREE
	3	LONDON PLANE TREE
	4	NUTTALL OAK
	5	PIN OAK
	20	WILLOW OAK
	5	RED OAK
	5	AMERICAN ELM
	14	BOSQUE ELM
	8	NELLIE STEVENS HOLLY
	3	EASTERN RED CEDAR
	4	DWARF SOUTHERN MAGNOLIA
	19	ROYAL STAR MAGNOLIA
	9	LOBLOLLY PINE
	6	AUTUMN BRILLIANCE SERVICEBERRY
	5	FOREST PANSY REDBUD
	2	CLOUD NINE EASTERN DOGWOOD
	2	GOLDEN GLORY CORNELIAN CHERRY
	12	CORNELIAN CHERRY DOGWOOD
	16	CRAPE MYRTLE
	9	CRAPE MYRTLE CORAL PINK

SHRUBS	QTY	COMMON NAME
	70	LITTLE RICHARD ABELIA
	50	AUTUMN RUBY AZALEA
	40	CRIMSON PYGMY BARBERRY
	8	GLOBE WINTER GEM BOXWOOD
	22	BOXWOOD
	9	ARTIC FIRE DOGWOOD
	10	YELLOW TWIG DOGWOOD
	12	DISTYLIUM
	16	LYNWOOD GOLD FORSYTHIA
	369	HOOGENDORN JAPANESE HOLLY
	2	WINTERBERRY
	19	RED SPRITE WINTERBERRY
	23	VIRGINIA SWEETSPIRE
	53	ROSE
	314	ANNUAL COLOR
	88	BAR HARBOR CREEPING JUNIPER
	338	CREEPING LILY TURF
	131	CONEFLOWER



ABNER CLAY PARK - LANDSCAPE PLAN
 CAR FINAL SUBMISSION, AUGUST 25, 2015





TREES REMOVED = 57
 TREES PROPOSED = 204
 REPLACEMENT RATIO = 3.5/1
 REQUIRED RATIO = 2/1

LABEL	SPECIES	SIZE	NOTES	REMOVED	LABEL	SPECIES	SIZE	NOTES	REMOVED	LABEL	SPECIES	SIZE	NOTES	REMOVED	LABEL	SPECIES	SIZE	NOTES	REMOVED
1	Zelkova	12"	Poor, topped	YES	17	Cedar	12"	Specimen	NO	33	Sycamore	10"	OK	YES	49	Oak	24"	Good condition, good form, mature	YES
2	Zelkova	12"	Poor, topped	YES	18	Zelkova	20"	OK, improper pruning	NO	34	Sycamore	12"	OK, dead branches	YES	50	Elm	15"	Topped, poor	YES
3	Zelkova	12"	Poor, topped	YES	19	Sycamore	12"	Poor, improper pruning	NO	35	Sycamore	10"	Topped, poor form	YES	51	Crape Myrtle	Multi-trunk	OK, crowding light pole	YES
4	Zelkova	12"	Poor, topped	YES	20	Sycamore	12"	Poor, improper pruning	NO	36	Sycamore	10"	OK, dead branches	YES	52	Elm	15"	Topped, poor	YES
5	Zelkova	12"	Poor, topped	YES	21	Zelkova	12"	Specimen	NO	37	Sycamore	10"	OK	YES	53	Oak	15"	Topped, poor	YES
6	Zelkova	12"	Poor, topped	YES	22	Sycamore	12"	Poor, improper pruning	YES	38	Sycamore	10"	OK form, dead branches	YES	54	Oak	15"	Topped, poor	YES
7	Zelkova	12"	Poor, topped	YES	23	Sycamore	12"	Poor, improper pruning	YES	39	Sycamore	10"	Topped, poor form	YES	55	Crape Myrtle	Multi-trunk	Specimen, pruning needed	YES
8	Zelkova	12"	Poor, topped	YES	24	Sycamore	12"	Poor, improper pruning	YES	40	Sycamore	2"	Young, OK	YES	56	Crape Myrtle	Multi-trunk	Poor form, damaged stems	YES
9	Zelkova	12"	Good, pruning needed	YES	25	Sycamore	12"	Poor, improper pruning	YES	41	Sycamore	10"	Poor form, damaged limbs	YES	57	Crape Myrtle	Multi-trunk	Specimen, pruning needed	YES
10	Crape Myrtle	Multi-trunk	Good, pruning needed	YES	26	Sycamore	10"	OK	YES	42	Sycamore	18"	Good form, specimen	YES	58	Pear	12"	Poor form	YES
11	Crape Myrtle	Multi-trunk	Good, pruning needed	YES	27	Sycamore	10"	OK	YES	43	Sycamore	10"	OK	YES	59	Crape Myrtle	Multi-trunk	Specimen, pruning needed	YES
12	Crape Myrtle	Multi-trunk	Good, pruning needed	YES	28	Sycamore	6"	Poor form, damaged	YES	44	Sycamore	10"	Dead	YES	60	Pear	18"	Poor form, wear branches, poor root	YES
13	Crape Myrtle	Multi-trunk	Good, pruning needed	YES	29	Sycamore	12"	Good condition, good form, mature	YES	45	Sycamore	2"	Young, OK	YES	61	Crape Myrtle	Multi-trunk	OK, pruning needed	YES
14	Crape Myrtle	Multi-trunk	Good, foundation tree	YES	30	Sycamore	12"	Dead	YES	46	Sycamore	10"	Topped, poor	YES	62	Elm	20"	OK form, scarring on trunk, poor	YES
15	Crape Myrtle	Multi-trunk	Good, foundation tree	YES	31	Sycamore	10"	Poor form, improper pruning	YES	47	Sycamore	10"	Decay at leader, poor	YES	63	Elm	20"	OK form, scarring on trunk, poor	YES
16	Sycamore	12"	OK	NO	32	Sycamore	10"	OK	YES	48	Sycamore	2"	Young, OK	YES	64	Elm	20"	OK form, scarring on trunk, poor	NO

ABNER CLAY PARK - TREE REMOVAL PLAN

CAR FINAL SUBMISSION, AUGUST 25, 2015

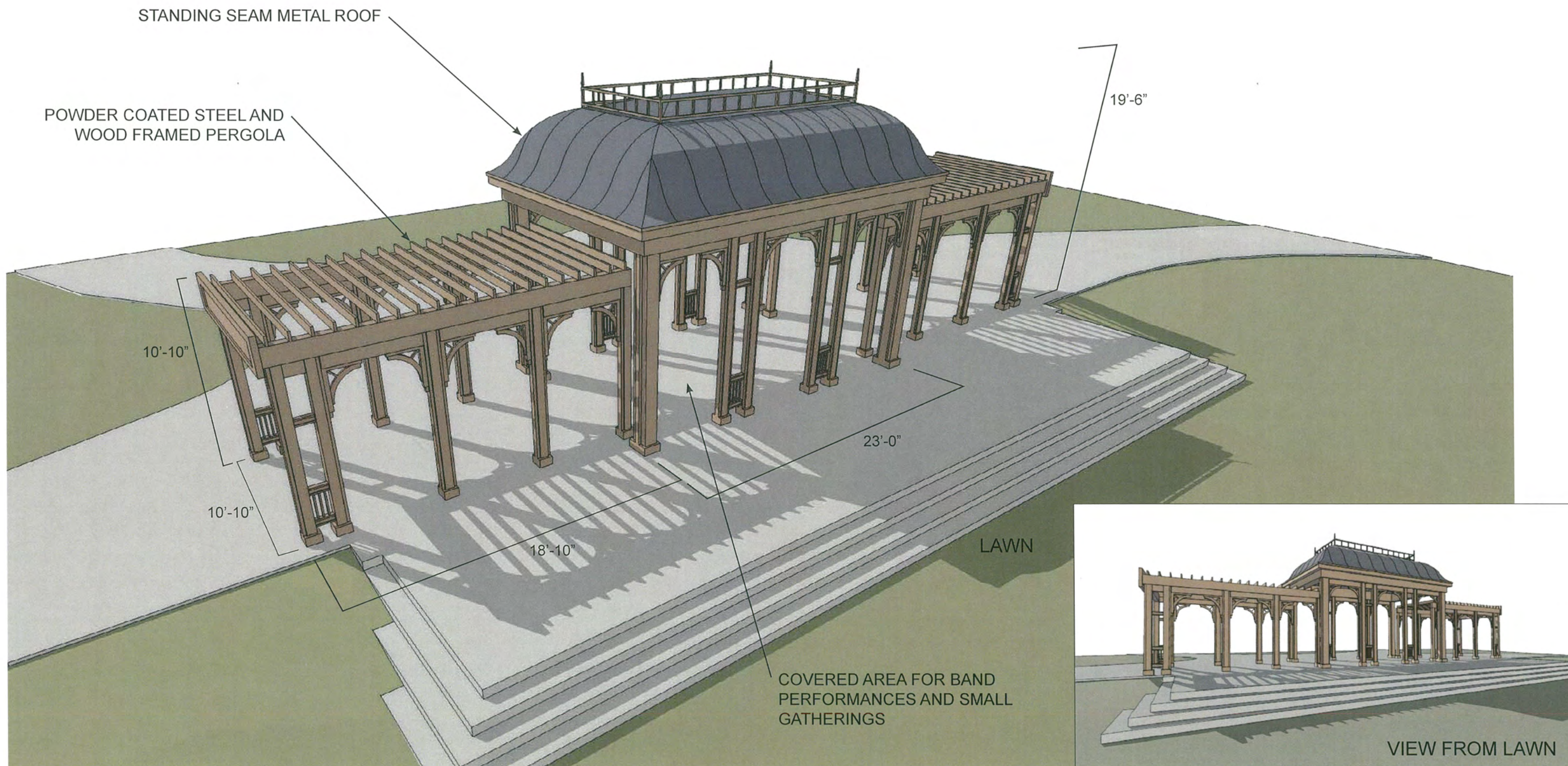




ABNER CLAY PARK - EXISTING SITE PHOTOS

CAR FINAL SUBMISSION, AUGUST 25, 2015





ABNER CLAY PARK - PERGOLA PLAN & ELEVATION

CAR FINAL SUBMISSION, AUGUST 25, 2015

