

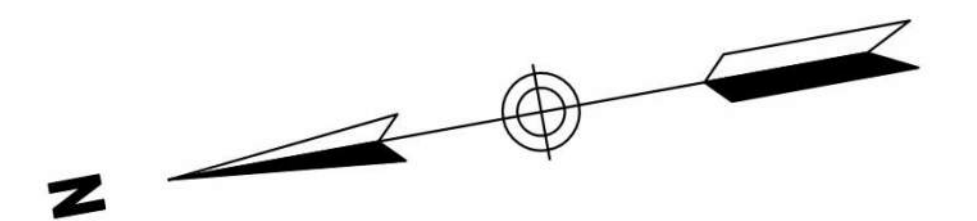


New Police Precinct #1

Urban Design Committee Submission

August 3, 2023

City of Richmond: New Police Station #1



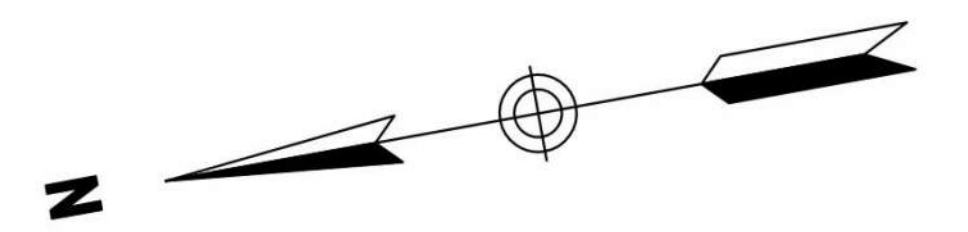
FLOOR PLAN: FIRST LEVEL

City of Richmond: New Police Station #1



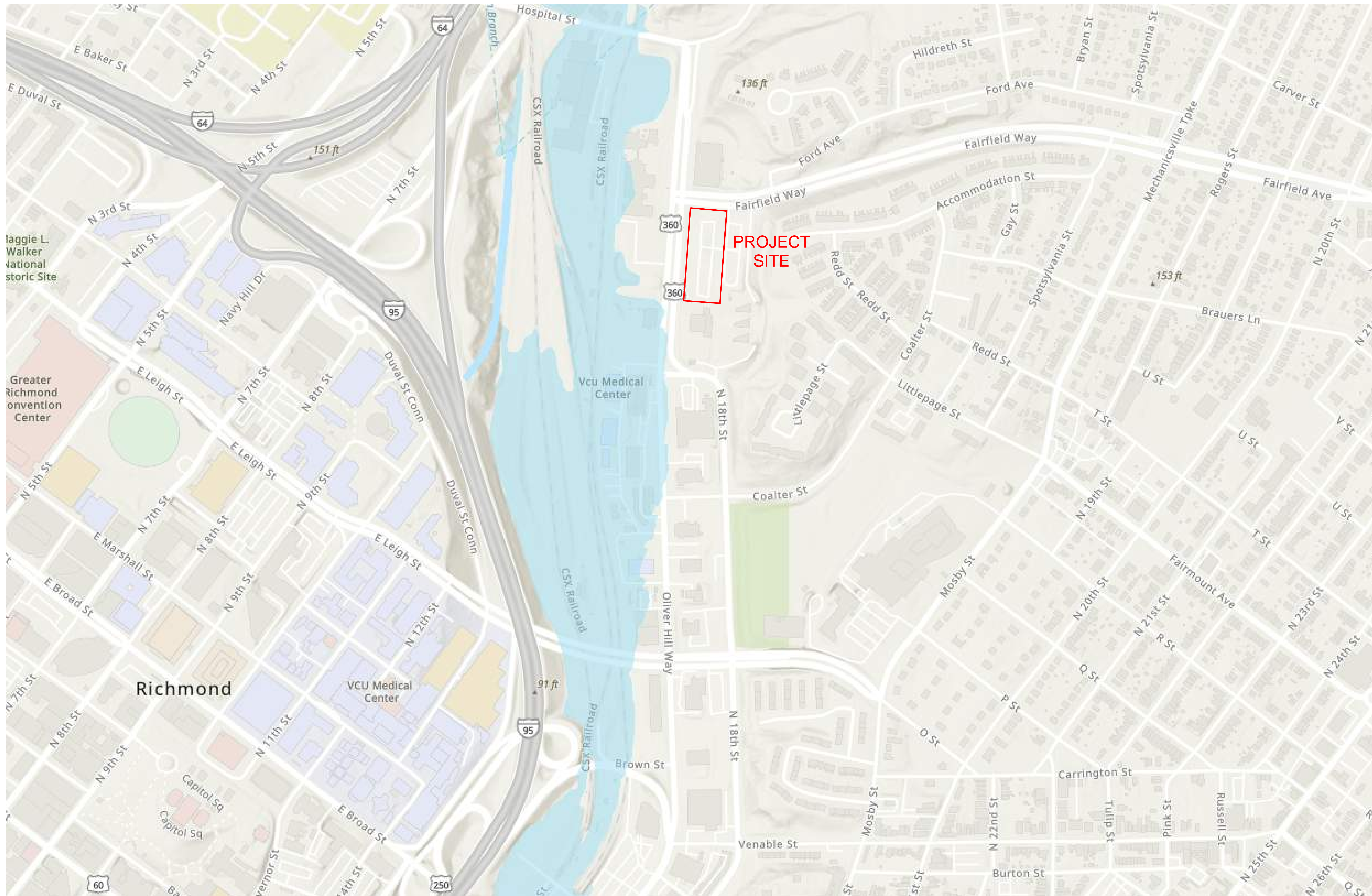
LEGEND

- 1.00 PUBLIC SPACES - MAIN PUBLIC ENTRY / PUBLIC LOBBY / COMMUNITY ROOM
- 2.00 ADMINISTRATIVE - MAIN SERVICE DESK / PATROL STAFF SUPPORT SPACES
- 3.00 ADMINISTRATIVE - ADMIN OFFICES + SUPPORT SPACES
- 4.00 STAFF AREAS - 'SHARED' WORK SPACES (BREAKROOM / FITNESS / LOCKER ROOMS / MISC)
- 5.00 OPERATIONS - SPECIAL DIVISIONS / DEPARTMENTS (FMT-D / FMT-R / RHHA-R / CRIME)
- 6.00 OPERATIONS - SALLY-PORT + PROCESSING SPACES + EVIDENCE STORAGE + INTERVIEW ROOMS
- 7.00 SUPPORT SPACES - BUILDING SERVICES (ELEC-MECH / DATA-IT / MISC STOR)
- 8.00 SUPPORT SPACES - CIRCULATION - CONSTRUCTION ("NET-TO-GROSS")



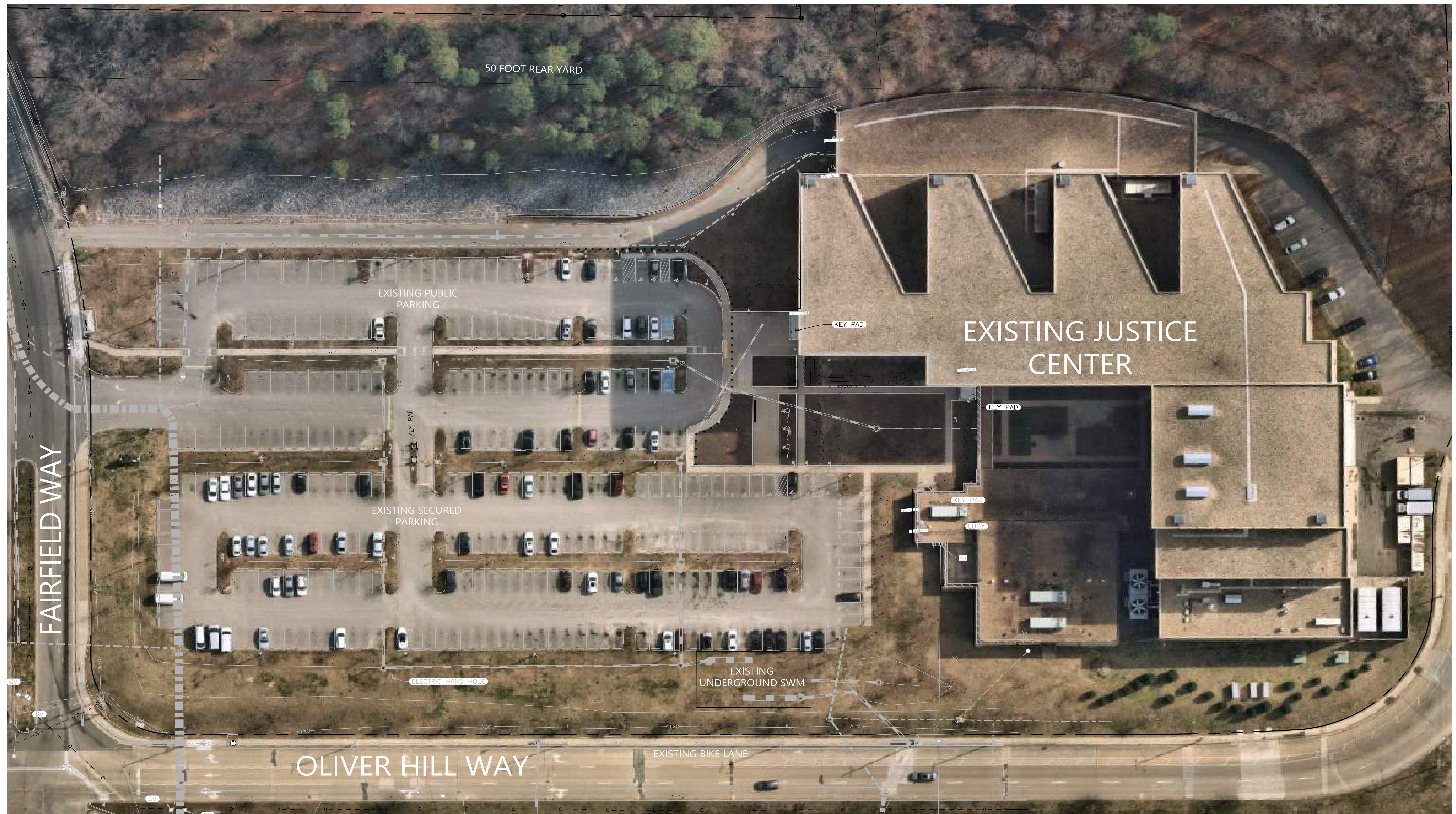
FLOOR PLAN: SECOND LEVEL

City of Richmond: New Police Station #1



Existing Neighborhood Map

City of Richmond: New Police Station #1



Existing Conditions Map

City of Richmond: New Police Station #1



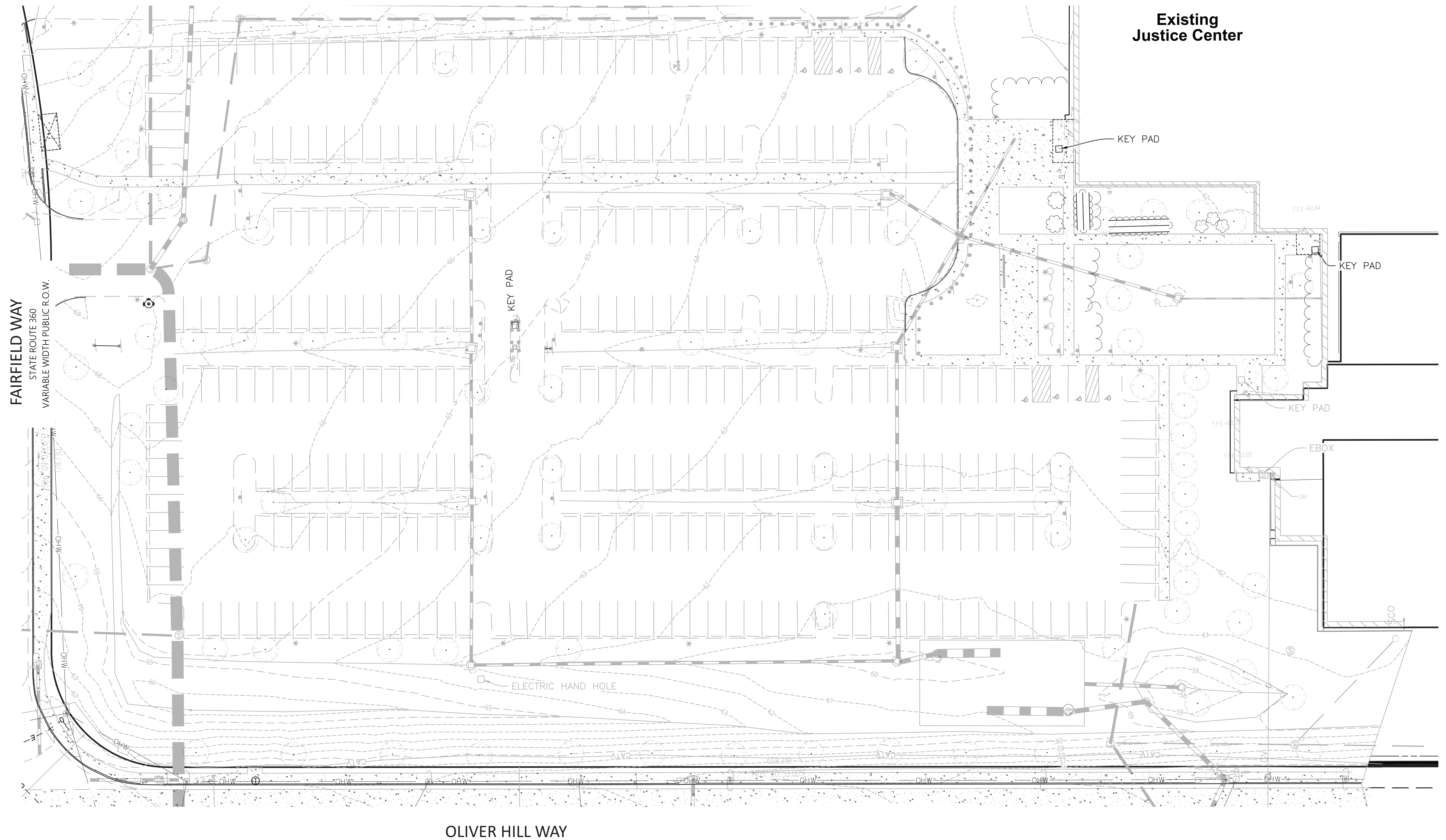
Reference Image - Aerial Site Plan Views (Current Existing Conditions)

City of Richmond: New Police Station #1



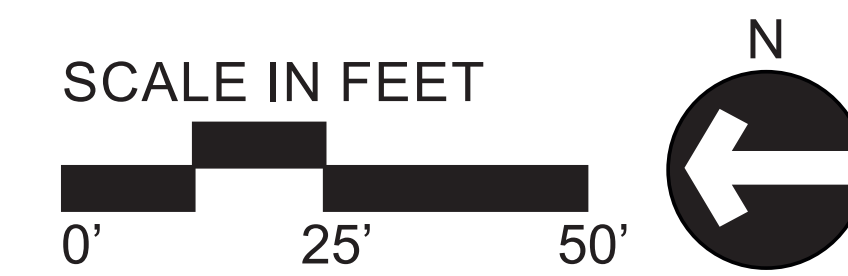
Reference Image - Existing Site Views (Existing Site Photos)

City of Richmond: New Police Station #1

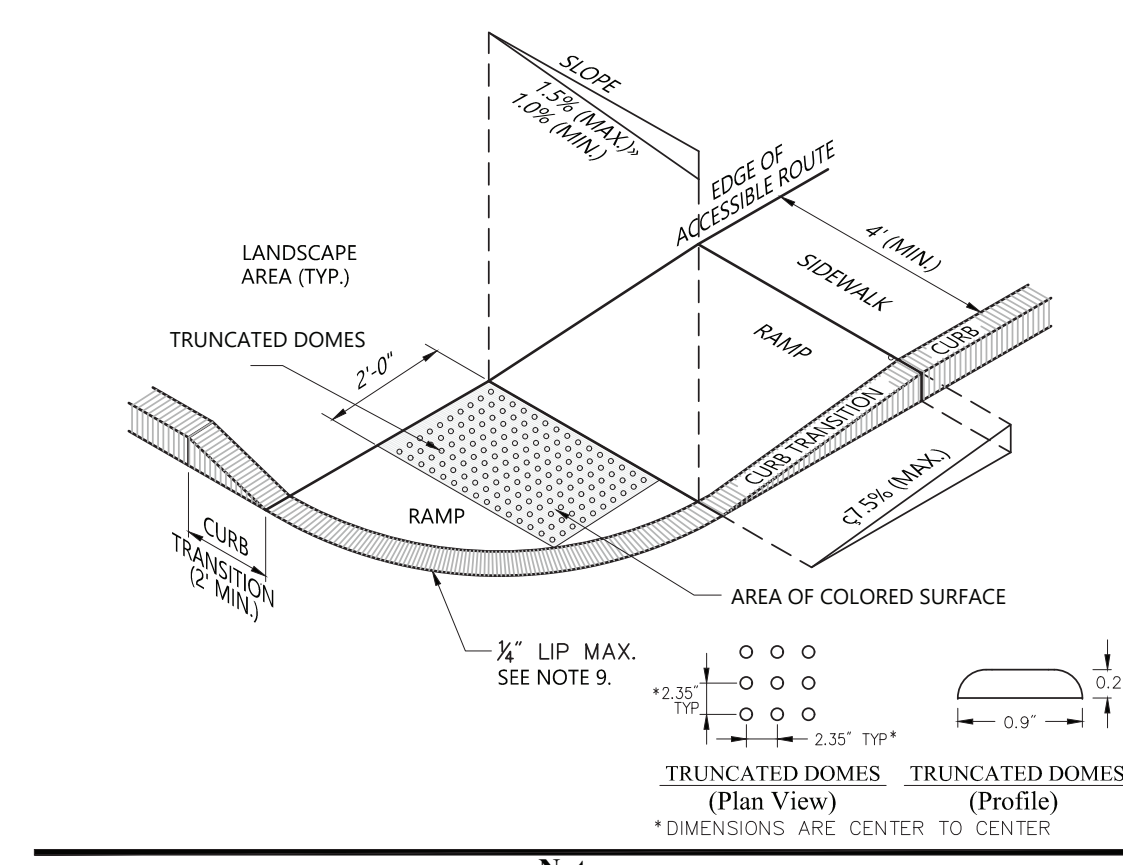


Existing Conditions Plan

UDC Submission

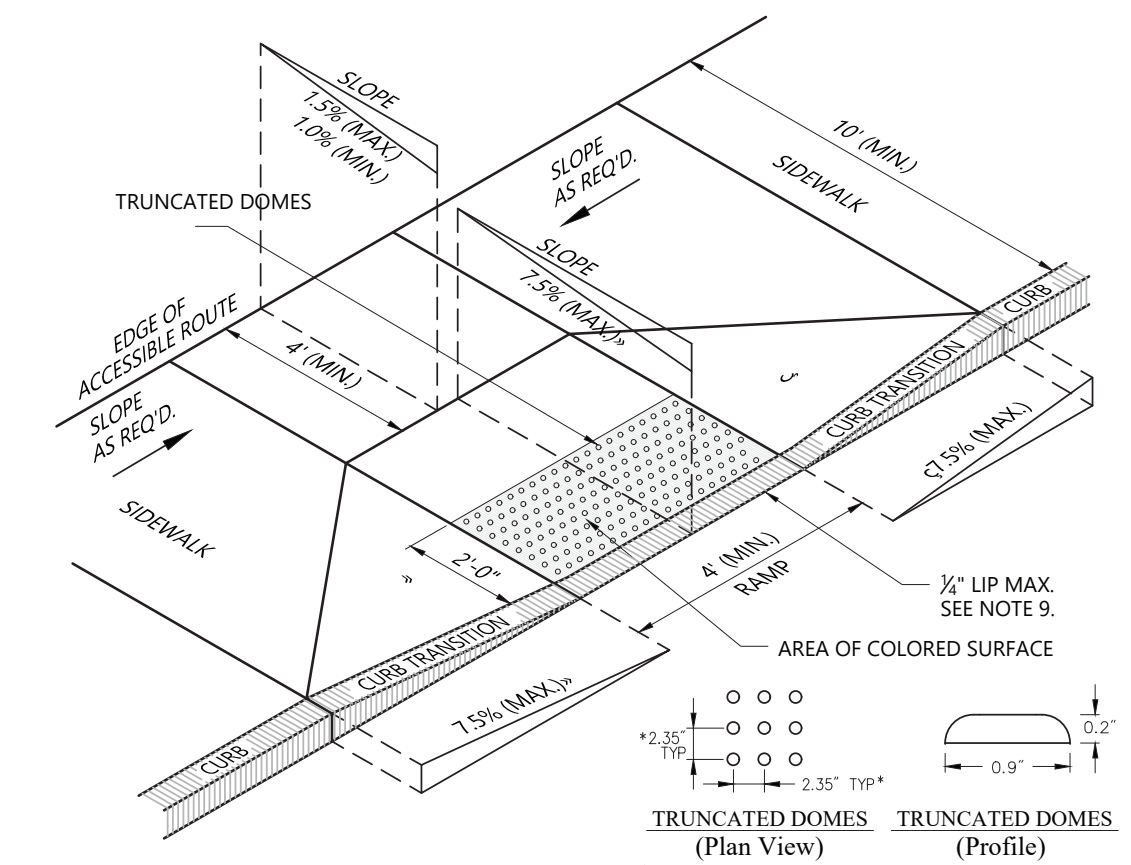


City of Richmond: New Police Station #1



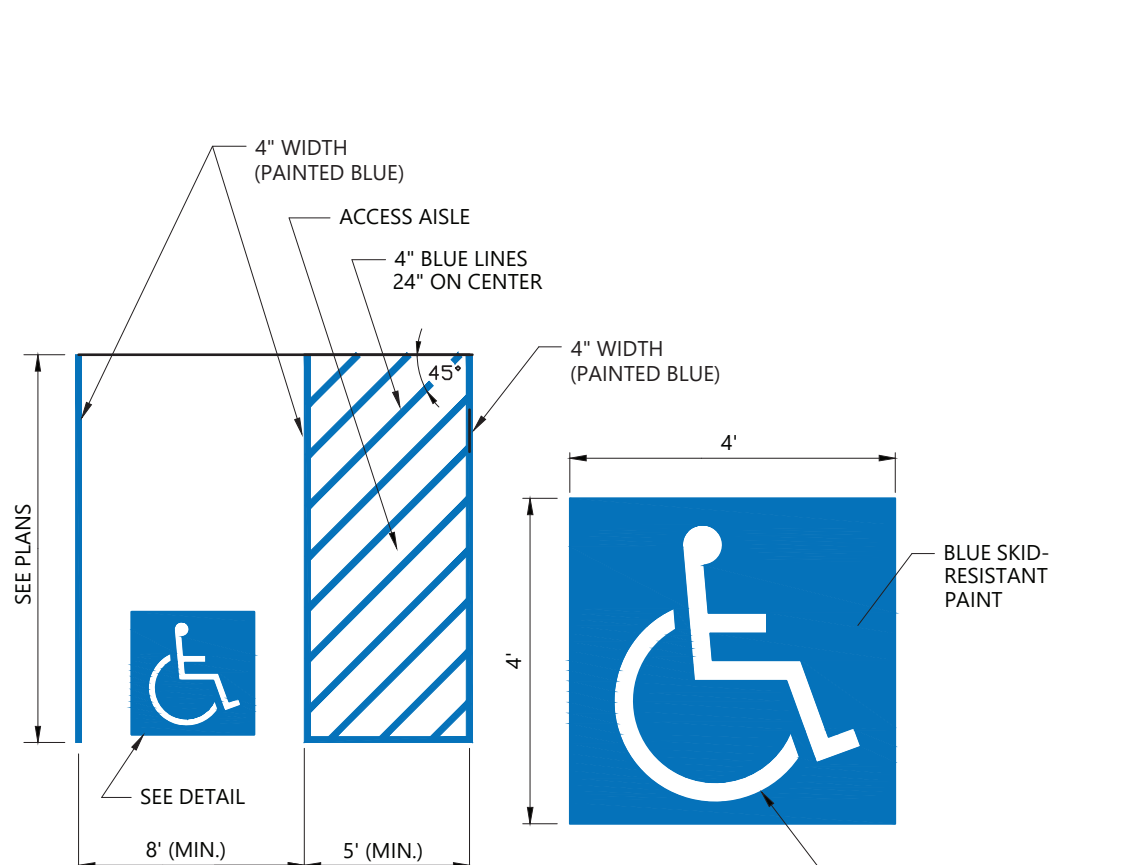
- Notes:**
1. THE MAXIMUM ALLOWABLE SIDEWALK AND CURB RAMP CROSS SLOPES SHALL BE 1.5 (1% MIN).
 2. THE MAXIMUM ALLOWABLE SLOPE OF ACCESSIBLE ROUTE EXCLUDING CURB RAMPS SHALL BE 5%.
 3. THE MAXIMUM ALLOWABLE SLOPE OF ACCESSIBLE ROUTE CURB RAMPS SHALL BE 7.5%.
 4. A MINIMUM OF 3 FEET CLEAR SHALL BE MAINTAINED AT ANY PERMANENT OBSTACLE IN ACCESSIBLE ROUTE (I.E. HYDRANTS, UTILITY POLES, TREE WELLS, SIGNS, ETC.).
 5. CURB TREATMENT VARIES. SEE PLANS FOR CURB TYPE.
 6. RAMP, CURB AND ADJACENT PAVEMENTS SHALL BE GRADED TO PREVENT PONDING.
 7. SEE TYPICAL SIDEWALK SECTION FOR RAMP CONSTRUCTION.
 8. WHERE ACCESSIBLE ROUTES ARE LESS THAN 5' IN WIDTH (EXCLUDING CURBING) A 5' x 5' PASSING AREA SHALL BE PROVIDED AT INTERVALS NOT TO EXCEED 200 FEET.
 9. ELIMINATE CURBING AT RAMP WHERE IT ADJUTS ROADWAY, EXCEPT WHERE VERTICAL CURBING IS INDICATED ON THE DRAWINGS TO BE SET FLUSH.
 10. DETECTABLE WARNINGS SHALL CONTRAST VISUALLY WITH ADJOINING SURFACES.
 11. DETECTABLE WARNINGS SHALL BE INSTALLED PERPENDICULAR TO THE ACCESSIBLE ROUTE.
 12. CONTRACTOR TO SUBMIT R.F.I. FOR THIS TYPE OF ACCESSIBLE CURB RAMP FOR APEX ROADWAY CROSSINGS.

Accessible Curb Ramp (ACR) - Type 'B-P' 8/09
N.T.S. Source: VHB LD_501



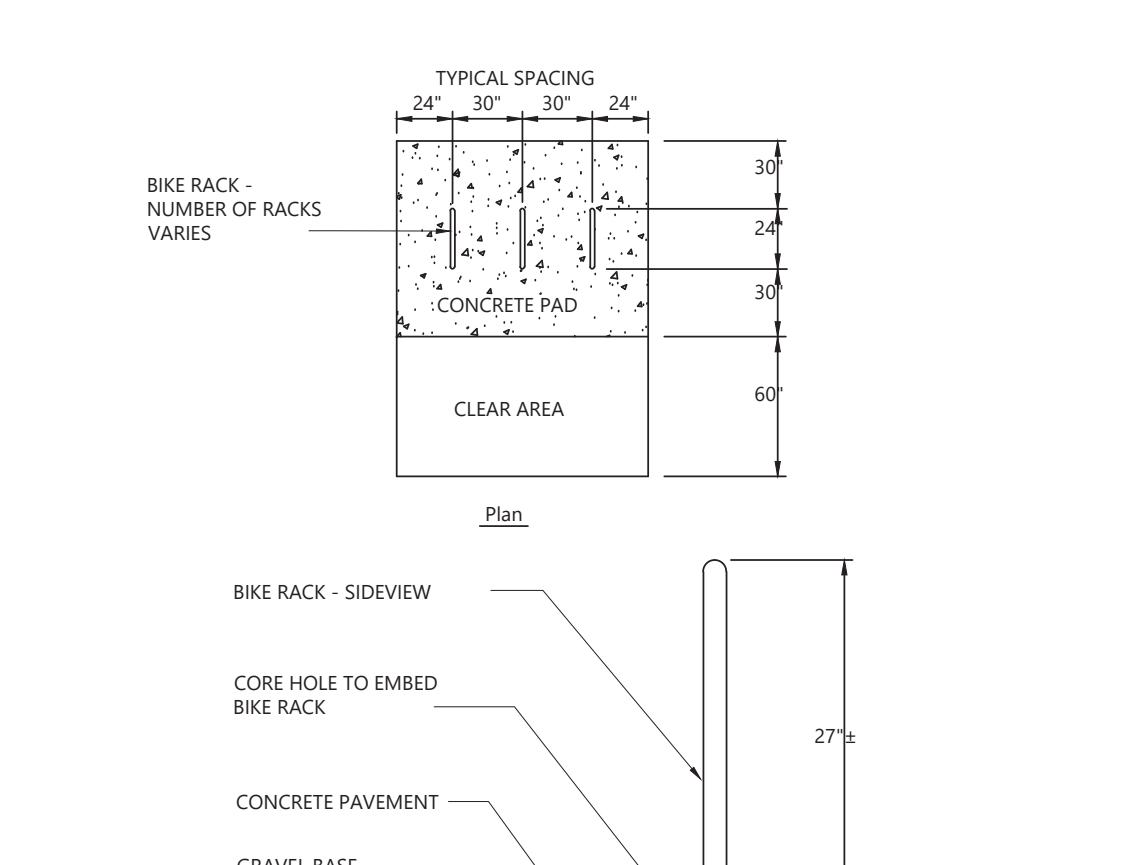
- Notes:**
1. THE MAXIMUM ALLOWABLE SIDEWALK AND CURB RAMP CROSS SLOPES SHALL BE 1.5 (1% MIN).
 2. THE MAXIMUM ALLOWABLE SLOPE OF ACCESSIBLE ROUTE EXCLUDING CURB RAMPS SHALL BE 5%.
 3. THE MAXIMUM ALLOWABLE SLOPE OF ACCESSIBLE ROUTE CURB RAMPS SHALL BE 7.5%.
 4. A MINIMUM OF 3 FEET CLEAR SHALL BE MAINTAINED AT ANY PERMANENT OBSTACLE IN ACCESSIBLE ROUTE (I.E. HYDRANTS, UTILITY POLES, TREE WELLS, SIGNS, ETC.).
 5. CURB TREATMENT VARIES. SEE PLANS FOR CURB TYPE.
 6. RAMP, CURB AND ADJACENT PAVEMENTS SHALL BE GRADED TO PREVENT PONDING.
 7. TYPICAL SIDEWALK SECTION FOR RAMP SECTION CONSTRUCTION.
 8. WHERE ACCESSIBLE ROUTES ARE LESS THAN 5' IN WIDTH (EXCLUDING CURBING) A 5' x 5' PASSING AREA SHALL BE PROVIDED AT INTERVALS NOT TO EXCEED 200 FEET.
 9. ELIMINATE CURBING AT RAMP WHERE IT ADJUTS ROADWAY, EXCEPT WHERE VERTICAL CURBING IS INDICATED ON THE DRAWINGS TO BE SET FLUSH.
 10. DETECTABLE WARNINGS SHALL CONTRAST VISUALLY WITH ADJOINING SURFACES.
 11. DETECTABLE WARNINGS SHALL BE INSTALLED PERPENDICULAR TO THE ACCESSIBLE ROUTE.

Accessible Curb Ramp (ACR) Type 'D-P' 8/09
N.T.S. Source: VHB LD_503



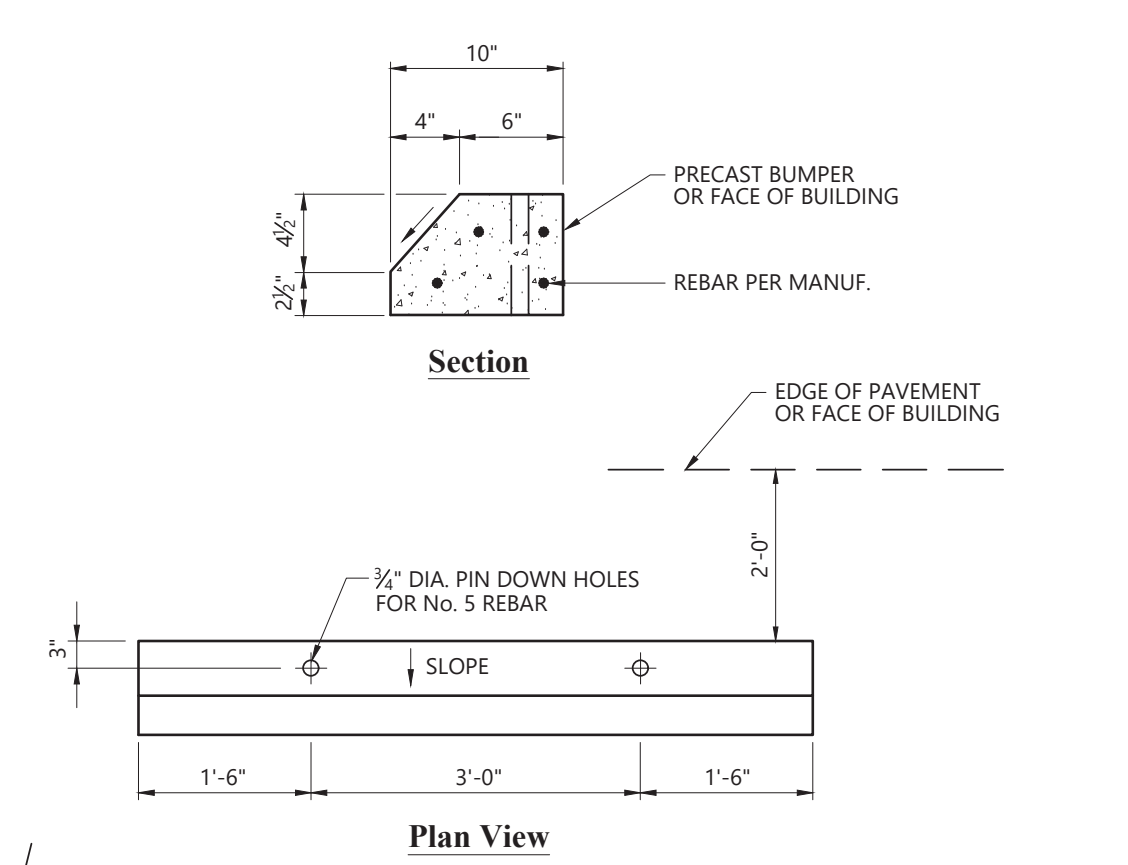
- Notes:**
1. ALL DIMENSIONS TO EDGES OF 4" PAVEMENT STRIPING.
 2. 8' STALL WIDTH REFERS TO 8' CLEAR BETWEEN INSIDE EDGES OF PAVEMENT MARKINGS.
 3. ALL SLOPES THROUGHOUT THE ACCESSIBLE PARKING AND AISLE AREAS SHALL NOT EXCEED 1.5%.

Accessible Parking Space 11/10
N.T.S. Source: VHB LD_552



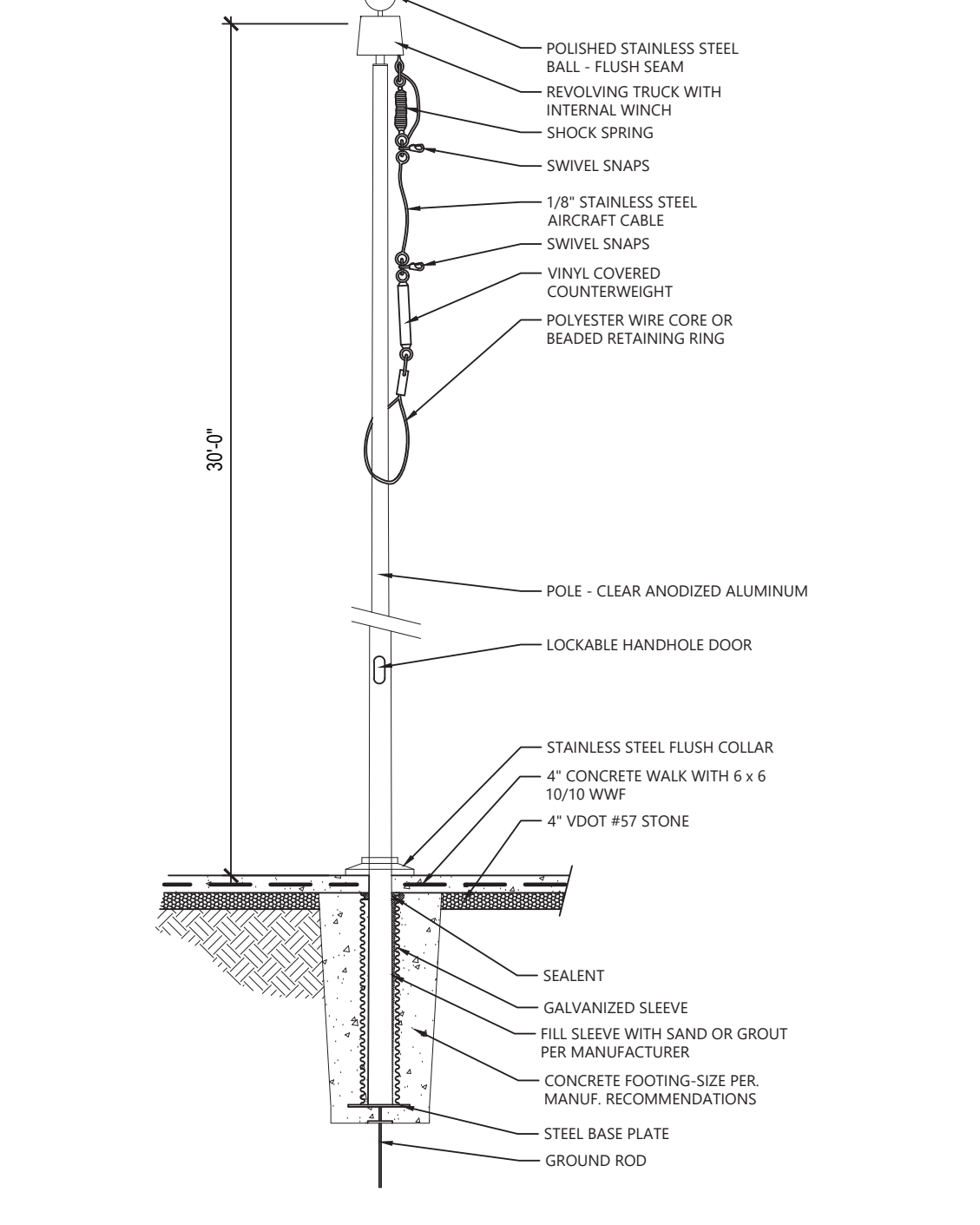
- Notes:**
1. INSTALL IN ACCORDANCE WITH MANUFACTURER'S RECOMMENDATIONS.

Bike Rack Detail 8/09
N.T.S. Source: VHB LD_501

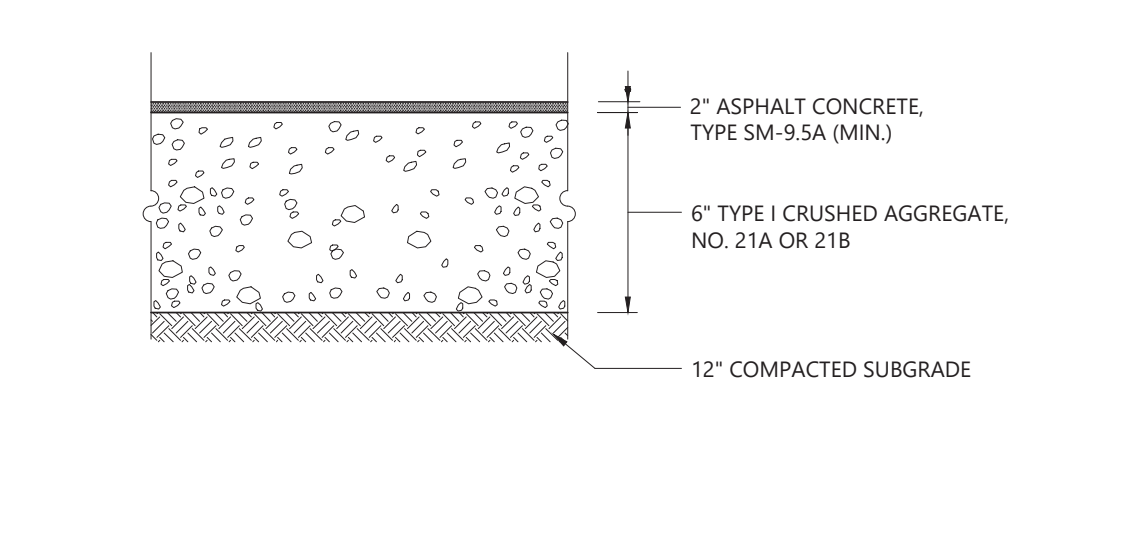


- Notes:**
1. PROVIDE TOOLED CONTROL JOINTS AT 6' O.C.
 2. PROVIDE BROOM FINISH IN DIRECTION PERPENDICULAR TO CURB.
 3. CEMENT CONCRETE SHALL BE 3000 PSI-TYPE II

Concrete Wheel Stop 8/09
N.T.S. Source: VHB LD_501

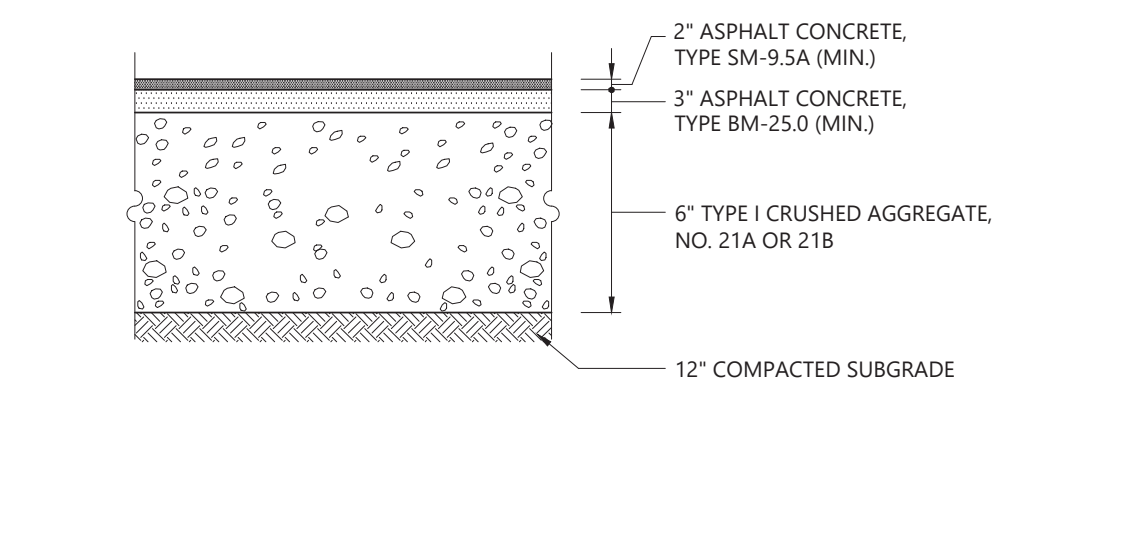


Flagpole 8/09
N.T.S. Source: VHB LD_501



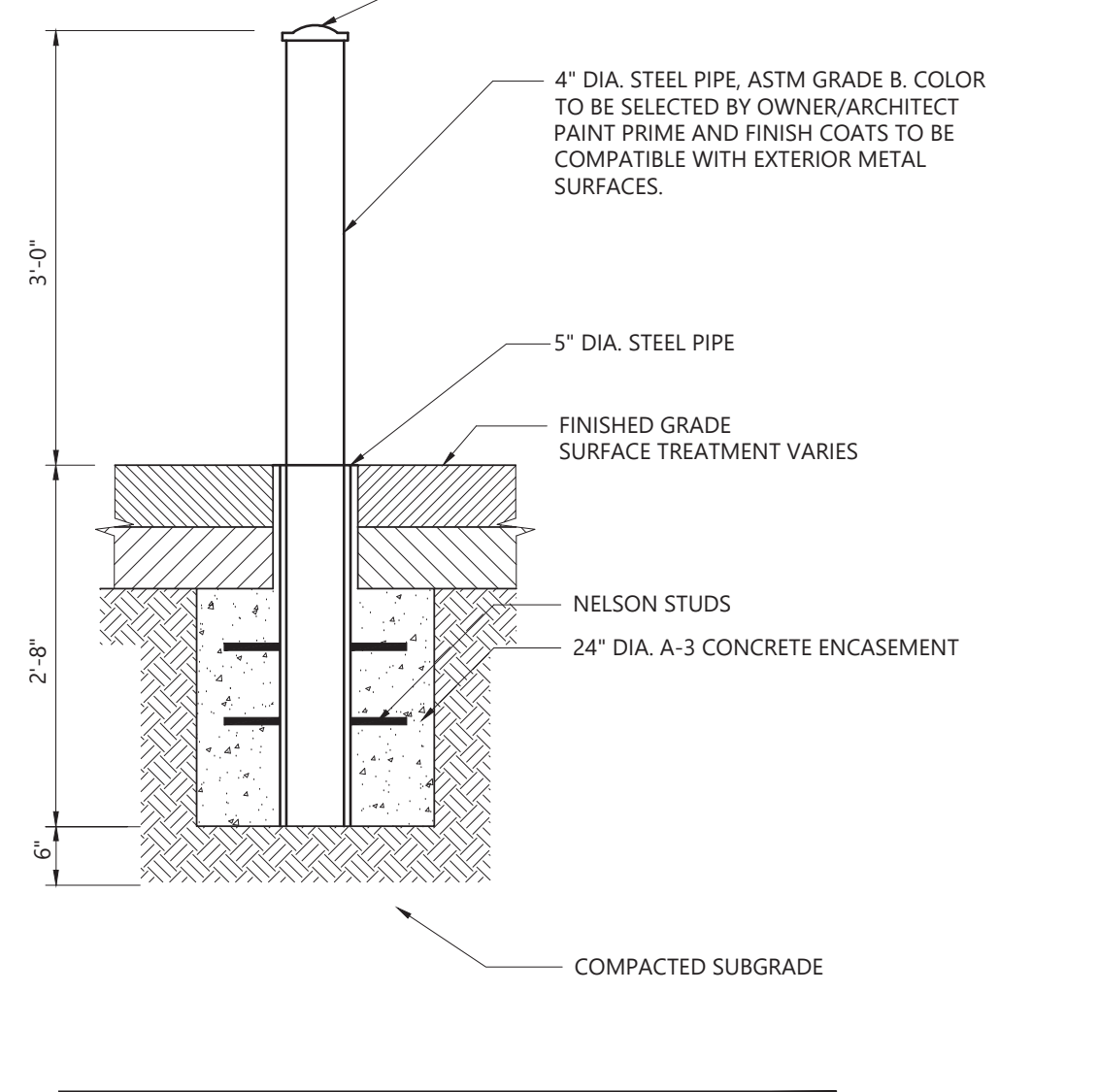
- Notes:**
1. COMPACT SUBGRADE TO AT LEAST 95% OF THE MAXIMUM DRY DENSITY BY THE STANDARD PROCTOR TEST (ASTM D 698).
 2. A DESIGN CBR VALUE OF 7 TO BE USED WHEN THE TOP ONE FOOT OF SUBGRADE HAS BEEN COMPACTED TO AT LEAST 95% OF MAXIMUM DRY DENSITY BY THE STANDARD PROCTOR TEST (ASTM B 698).
 3. CONTRACTOR TO VERIFY ACTUAL IN-PLACE SUBGRADE CBR PRIOR TO PLACEMENT OF AGGREGATE BASE MATERIAL. CONTRACTOR TO NOTIFY ENGINEER OF RECORD WITH RESULTS.

Standard Duty Traffic Loading Pavement Section 8/09
N.T.S. Source: VHB LD_501



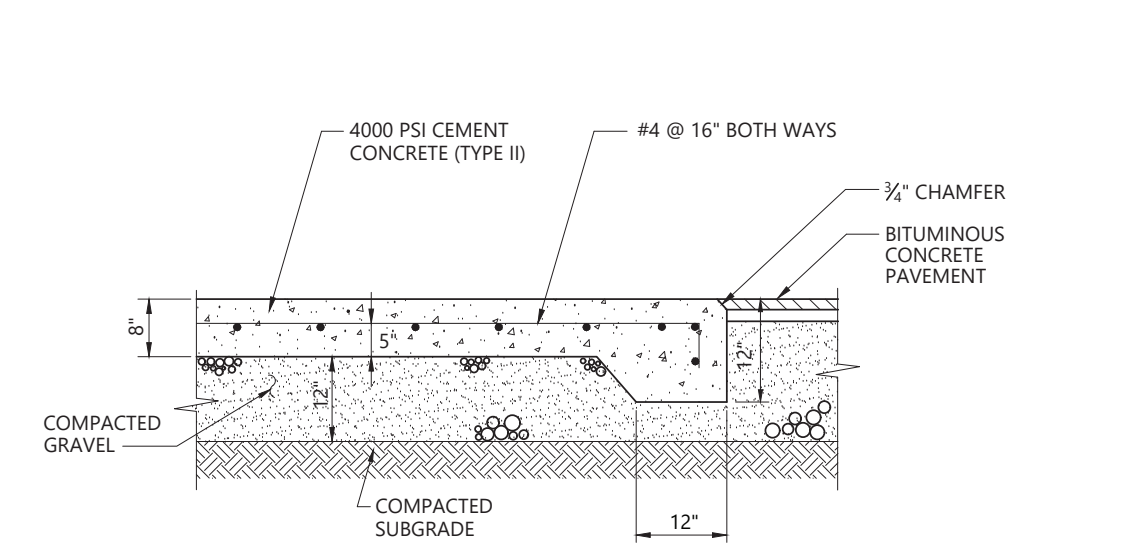
- Notes:**
1. COMPACT SUBGRADE TO AT LEAST 95% OF THE MAXIMUM DRY DENSITY BY THE STANDARD PROCTOR TEST (ASTM D 698).
 2. A DESIGN CBR VALUE OF 7 TO BE USED WHEN THE TOP ONE FOOT OF SUBGRADE HAS BEEN COMPACTED TO AT LEAST 95% OF MAXIMUM DRY DENSITY BY THE STANDARD PROCTOR TEST (ASTM B 698).
 3. CONTRACTOR TO VERIFY ACTUAL IN-PLACE SUBGRADE CBR PRIOR TO PLACEMENT OF AGGREGATE BASE MATERIAL. CONTRACTOR TO NOTIFY ENGINEER OF RECORD WITH RESULTS.

Medium Duty Traffic Loading Pavement Section 8/09
N.T.S. Source: VHB LD_501



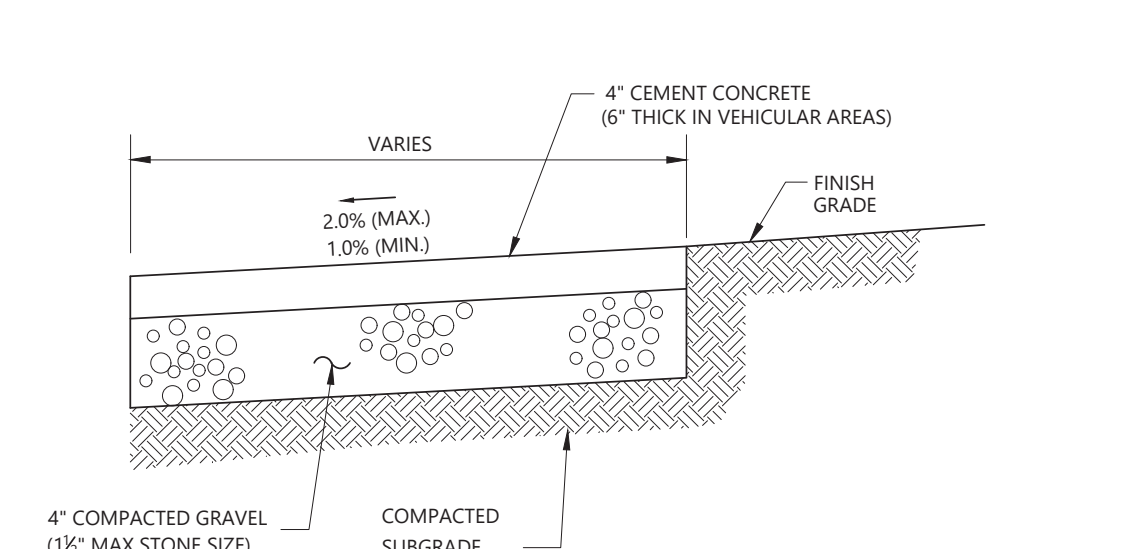
- Notes:**
1. BOLLARD SHALL BE TRAFFICGUARD REMOVABLE ROUND POST KEY LOCK, RP 3503, OR APPROVED EQUAL.

Removable Bollard 8/09
N.T.S. Source: VHB LD_501



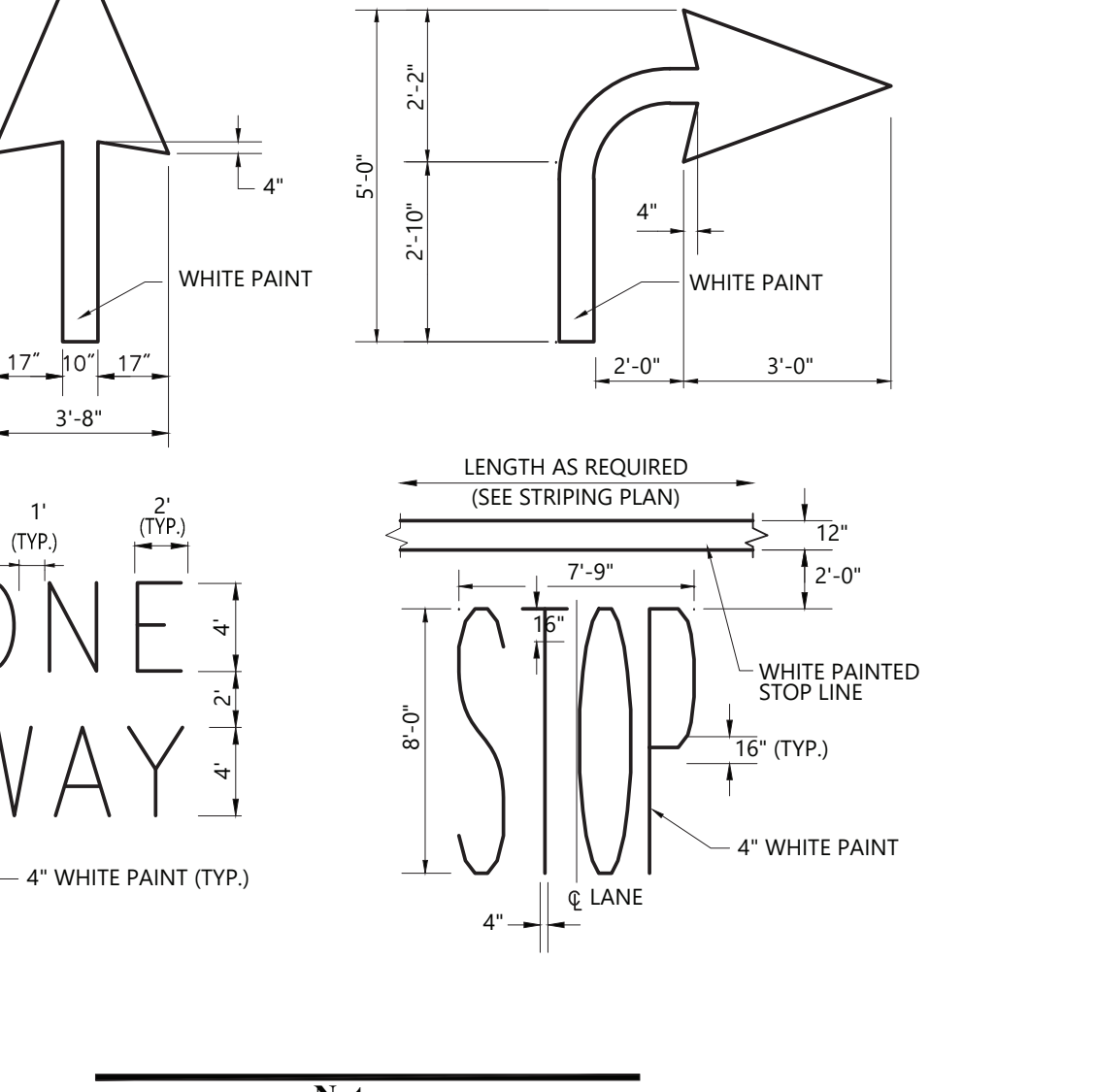
- Notes:**
1. SIZE OF PAD TO BE AS INDICATED ON PLANS.
 2. CONSTRUCTION JOINTS SHALL BE SPACED NO MORE THAN 40 FEET ON CENTER AND SHALL BE EQUALLY SPACED OVER THE LENGTH AND WIDTH OF THE PAD.
 3. COORDINATE TRANSFORMER AND GENERATOR PAD WITH MANUFACTURER REQUIREMENTS.

Concrete Equipment Pad 8/09
N.T.S. Source: VHB LD_501



- Notes:**
1. PROVIDE TOOLED CONTROL JOINTS AT 6' O.C.
 2. PROVIDE BROOM FINISH IN DIRECTION PERPENDICULAR TO CURB.
 3. CEMENT CONCRETE SHALL BE 3000 PSI-TYPE II

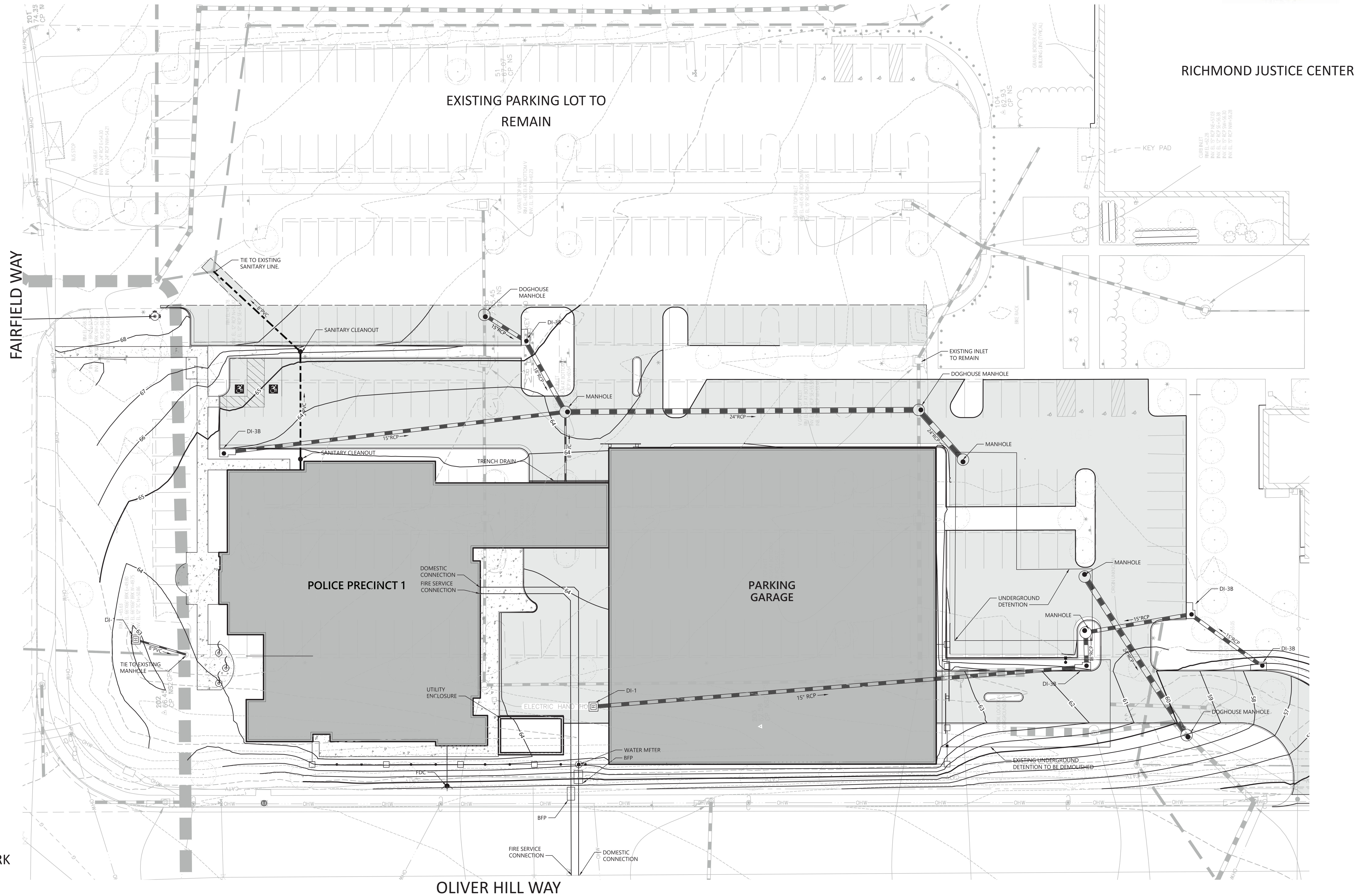
Concrete Pavement Section 8/09
N.T.S. Source: VHB LD_501



- Notes:**
1. PAVEMENT MARKINGS TO BE INSTALLED FOR ON SITE WORK IN LOCATIONS SHOWN.

Pavement Marking Detail 8/09
N.T.S. Source: VHB LD_501

City of Richmond: New Police Station #1

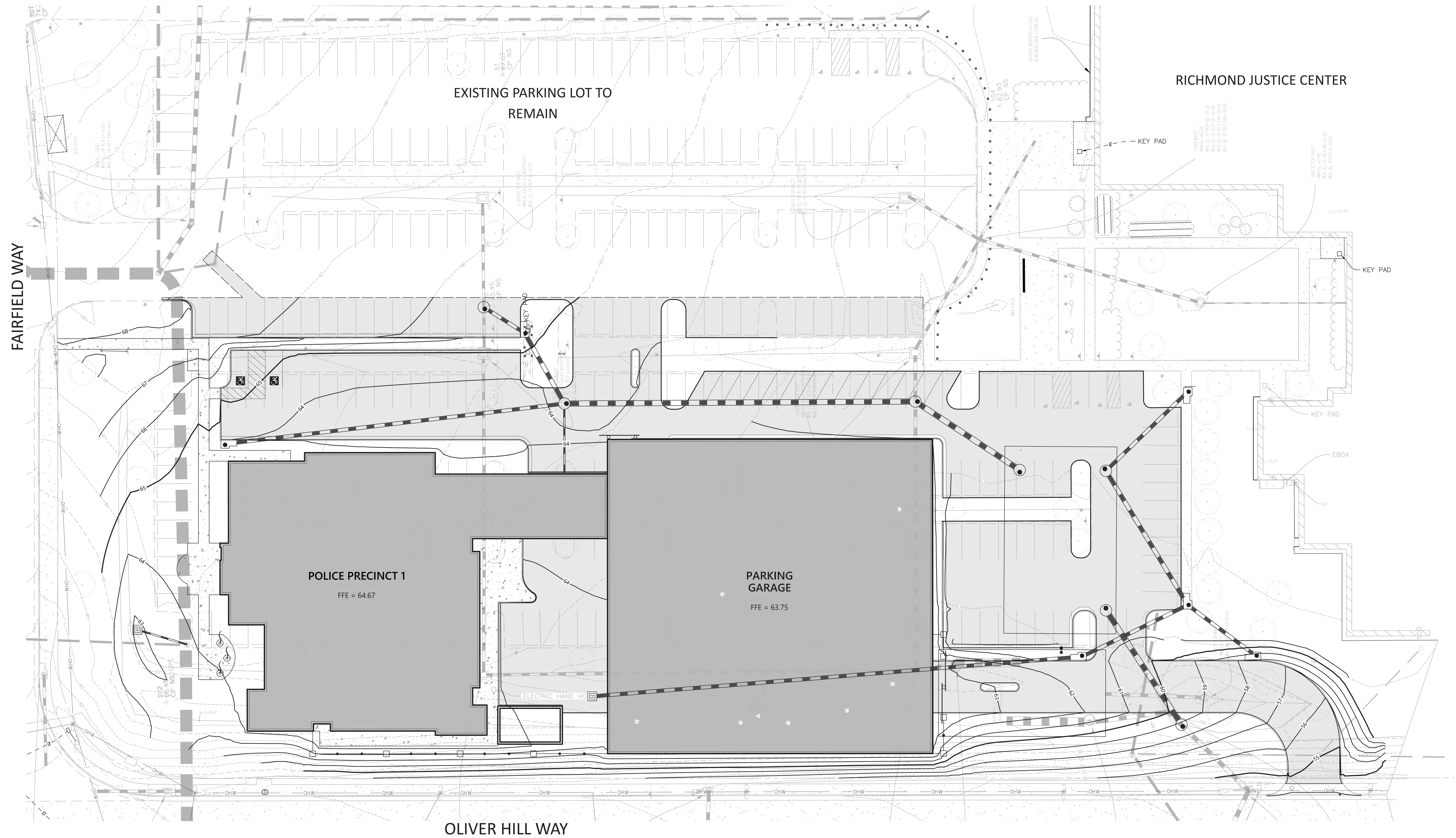


Utility Plan

UDC Submission



City of Richmond: New Police Station #1

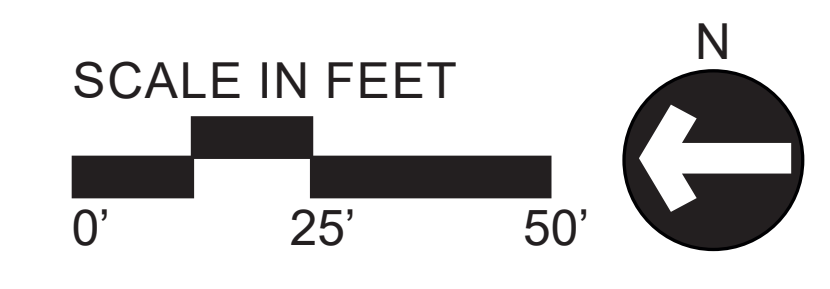
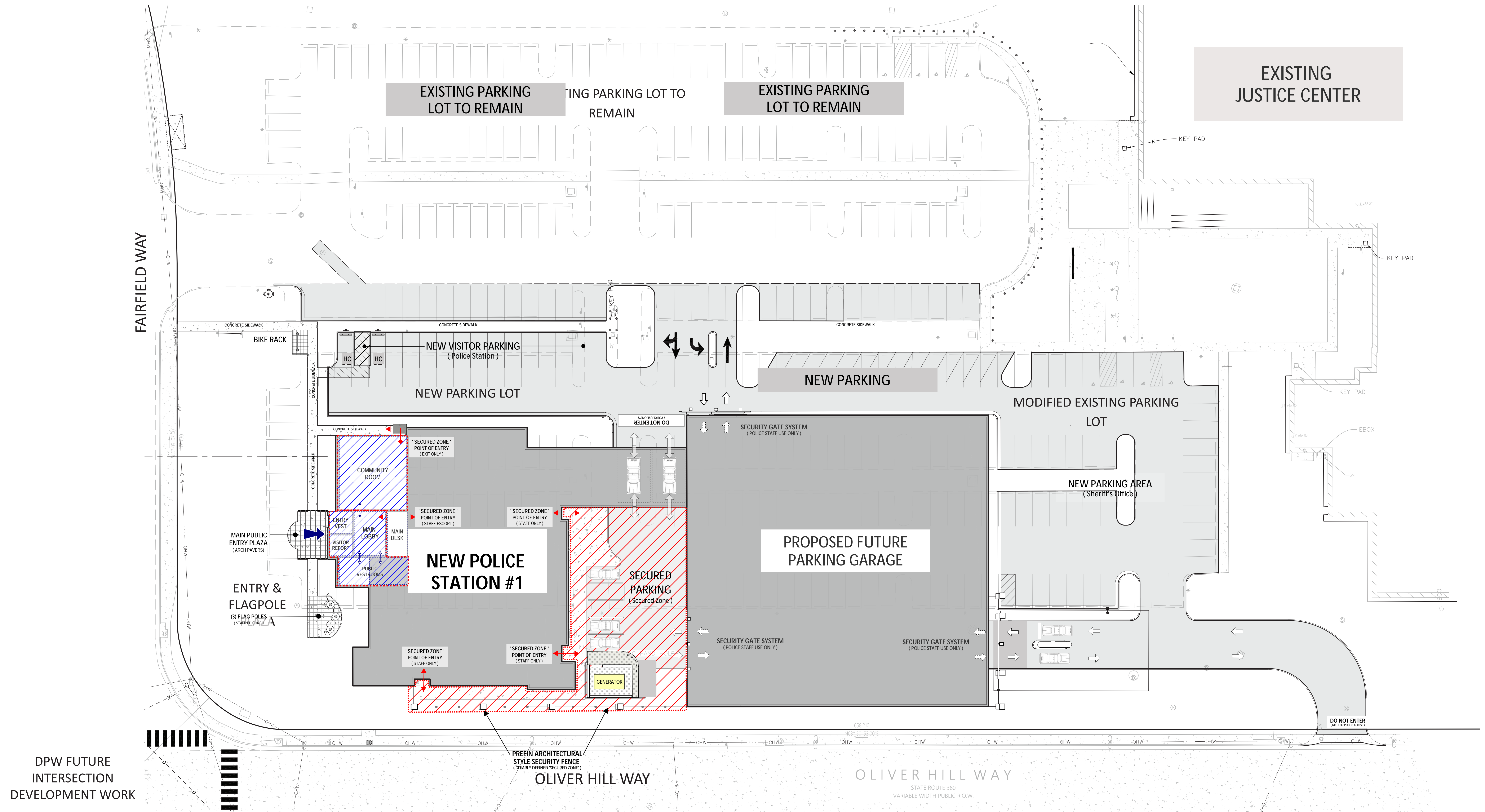


Grading Plan

UDC Submission



City of Richmond: New Police Station #1



Conceptual Design - Proposed Master Plan - Site Plan Layout

City of Richmond: New Police Station #1



BENCH TO MATCH SITE PRECEDENT



TRASH RECEPTACLE TO MATCH SITE PRECEDENT



OCTOBER GLORY RED MAPLE



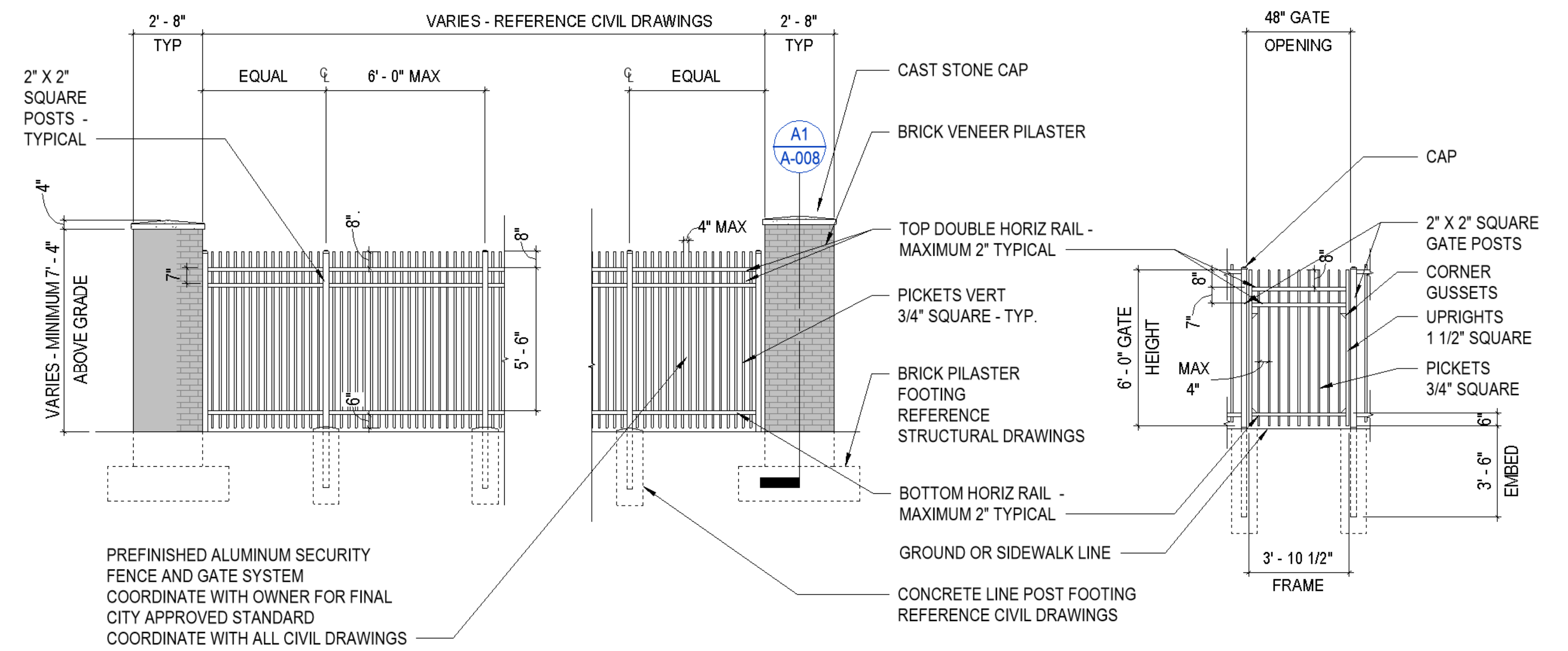
SHAMROCK INKBERRY



LOW SCAPE MOUND BLACK CHOKEBERRY

Site & Park Materials

City of Richmond: New Police Station #1



Reference Document - Examples of Proposed Prefinished Metal Security Fencing Materials with Masonry Piers