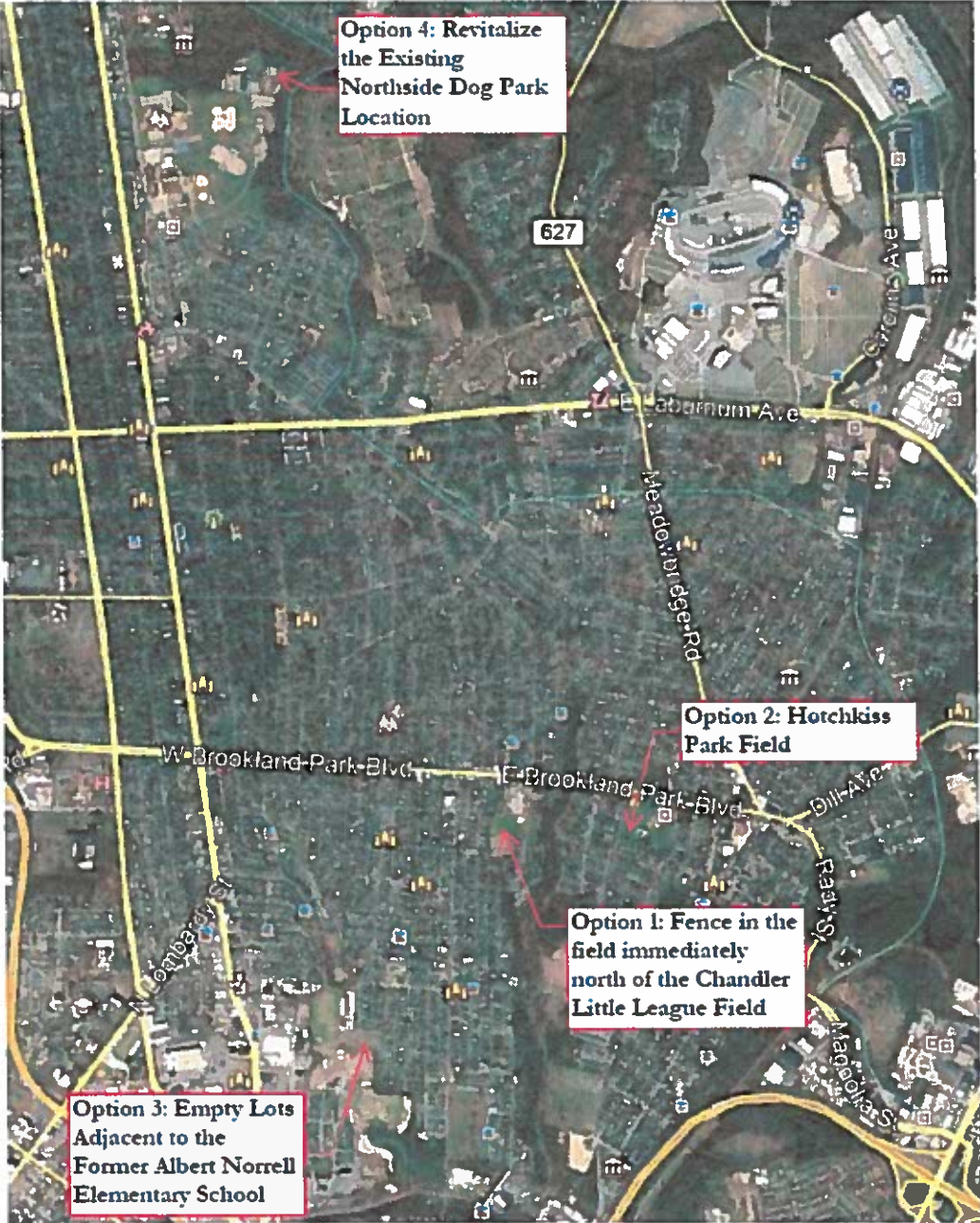


**Richmond Northside Dog Park Options**

The existing Northside dog park does not meet the needs of the community it is meant to serve. Currently the dog park is too far from the neighborhood to walk to by the majority of people who would like to use it, is difficult to find due to lack of way finding signage, and does not have dog park essentials such as running water and shade/shelter. A group of neighbors had recently been using the Chandler Little League diamond as an alternative dog park due to its fence and prime location. Neighbors were recently warned via a post on Nextdoor.com that it is not an acceptable use of this ball field anymore. In response a group of neighbors organized to find solutions. Four options were discussed in an effort to find a solution to the needs of the community.



**Option 1: Fence in the field immediately north of the Chandler Little League Field.**

Option 1 is to fence in the field immediately north of the Chandler Little League Field. This option is ideal as the community has already shown a preference for this location as evidenced by its neighborhood usage and is located in the heart of the neighborhood. The site (shown below in red) is approximately 0.9 acres. According to the City of Richmond geographic information system (GIS) the lot is owned by the City of Richmond School Board. A copy of this letter has been sent to the 3<sup>rd</sup> district school board member, Kenya Gibson.



## Option 2: Hotchkiss Park Field

Hotchkiss Park is already a community center so it is a compatible land use for a dog park. Additionally, there is a parking lot on site somewhat negating the fact that this site over half a mile east of the Chandler Field ball field. According to City GIS the site is owned by the City of Richmond Department of Recreation and Parks. The site (shown below in red) is approximately 0.75 acres in size. Option 2 is less ideal as the Community center is already very busy.



### Option 3: Empty Lots Adjacent to the Former Albert Norrell Elementary School

Option 2 consists of several parcels owned by the City of Richmond and the City of Richmond Real Estate Services. It is located east of the former Albert Norrell Elementary School and north of the First Tee of Greater Richmond golf course. According to the City's GIS services, the area consists of four parcels. The site (shown below is red) is approximately 1.5 acres in size and is in a location that would be minimally intrusive to neighbors due to existing vegetative screening and surrounding land uses. The site is less than ideal however as it is not as centrally located and is approximately 0.7 mile south of Brookland Park Boulevard.



#### **Option 4: Revitalize the Existing Northside Dog Park**

As stated above, the existing Northside Dog Park's location is less than ideal. It is not in a walkable location for the majority of people. The existing fenced in areas is approximately 0.43 acres. Fixes requested are as follows:

1. Wayfinding signage to the park
2. Fence repair between the two areas of the park
3. Running water
4. Shade/shelters
5. Tree planting



#### **Conclusion**

A poll was created on Nextdoor.com to allow the community to express their preference of the four options. Out of 47 responses Option 1 and 3 received the majority of votes (20 and 22 votes respectively) with Option 2 only receiving 5 votes and Option 4 only receiving 3 votes. Options 1 and 2 are our preferred locations.