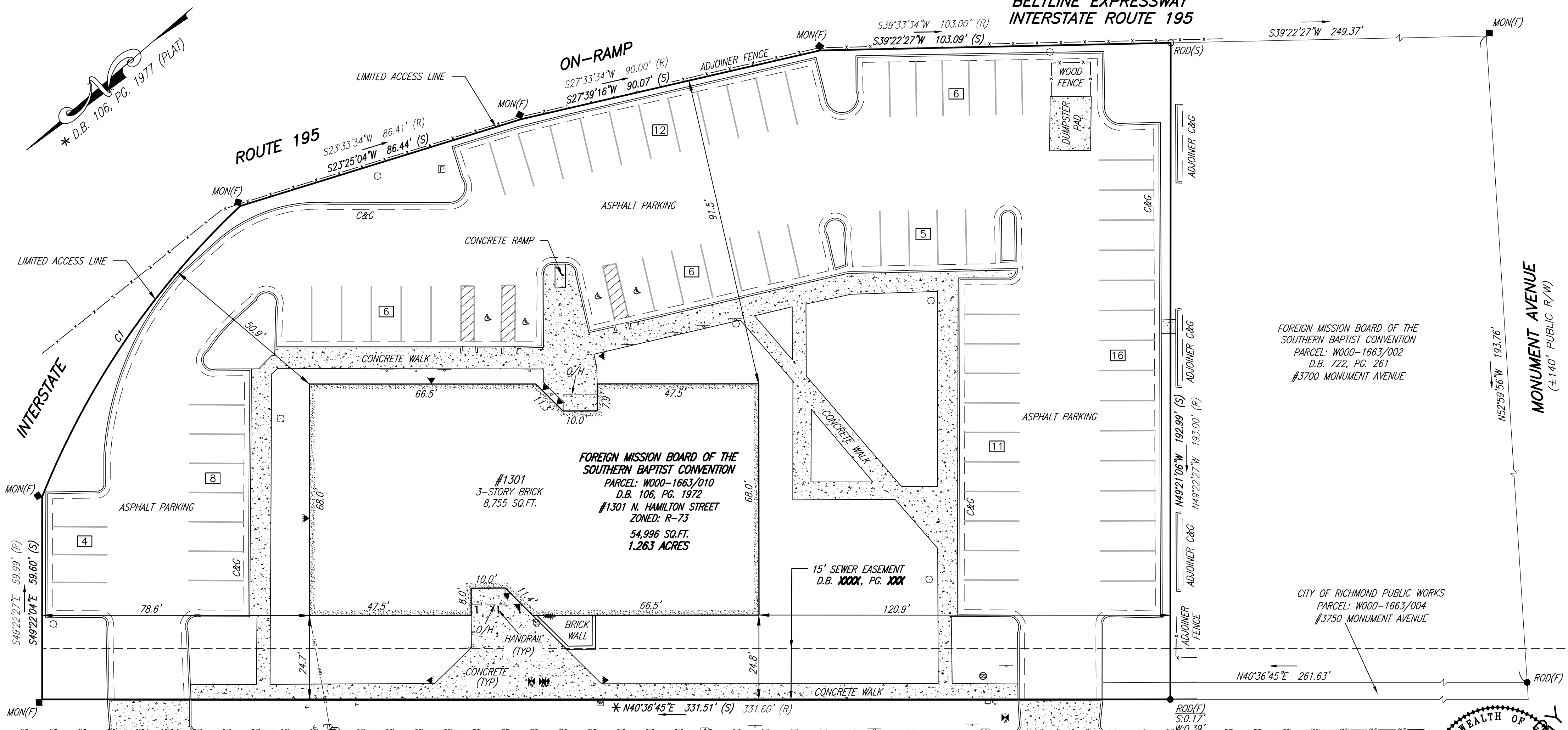


**BELTLINE EXPRESSWAY
INTERSTATE ROUTE 195**

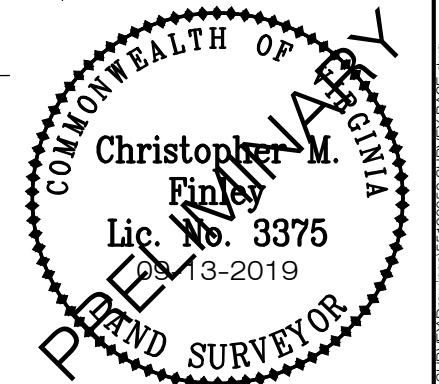


FOREIGN MISSION BOARD OF THE
SOUTHERN BAPTIST CONVENTION
PARCEL: W000-1663/002
D.B. 722, PG. 261
#3700 MONUMENT AVENUE

CITY OF RICHMOND PUBLIC WORKS
PARCEL: W000-1663/004
#3750 MONUMENT AVENUE

N. HAMILTON STREET
(±50' PUBLIC R/W)

CURVE TABLE					
CURVE	RADIUS	ARC LENGTH	CHORD BEARING	CHORD LENGTH	DELTA ANGLE
C1	238.73'	104.18' (S)	S15°07'14\"E	103.35'	25°00'10\"
		104.30' (R)			



SYMBOL LEGEND

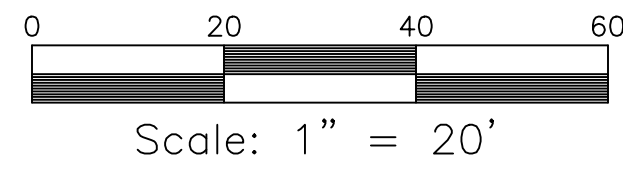
⊙	CLEANOUT	⊙	SEWER MANHOLE
#	COMMITMENT EXCEPTION No.	—	SIGN POST
—	GUY WIRE	*	SPRINKLER CONTROL OR HEAD
♿	HANDICAP PARKING	⊙	UTILITY POLE
⊙	LIGHT POLE	⚡	WALL/GROUND LIGHT
⊠	MAIL BOX	⚡	WATER VALVE
#	No. OF PARKING SPACES	⊠	WATER METER
⊠	POWER TRANSFORMER		

TEXT LEGEND

(SQ.FT.)	SQUARE FEET
(C&G)	CONCRETE CURB AND GUTTER
(P.O.C.)	POINT OF COMMENCEMENT
(P.O.B.)	POINT OF BEGINNING
(R/W)	RIGHT OF WAY
(MON)	MONUMENT
(P.B.)	PLAT BOOK
(D.B.)	DEED BOOK
(PG.)	PAGE
(O/H)	OVERHANG
(E/P)	EDGE OF PAVEMENT

LINETYPE LEGEND

—OHP—OHP—	OVERHEAD POWER
—OHT—OHT—	OVERHEAD TELEPHONE
—X—X—X—	FENCE



ALTA/NSPS LAND TITLE SURVEY
OF 1.263 ACRES OF LAND
KNOWN AS #1301 N. HAMILTON STREET
BEING PARCEL: W000-1663/010
CITY OF RICHMOND, VIRGINIA

PLANNERS / ARCHITECTS / ENGINEERS / SURVEYORS
ROANOKE / RICHMOND / NEW RIVER VALLEY / STAUNTON / HARRISONBURG / LYNCHBURG
15871 City View Drive, Suite 200 / Midlothian, Virginia 23113 / Phone (804) 794-0571 / www.balzer.com

DATE: 09-13-2019
SCALE: 1" = 20'
JOB: 55190052.00
DRAWN BY: WRL
CHECKED BY: CMF
SHEET 2 OF 2

