



# COMMISSION OF ARCHITECTURAL REVIEW

## APPLICATION FOR CERTIFICATE OF APPROPRIATENESS

PROPERTY (location of work)

Address 0 N 29th Street, Richmond, VA 23223

Historic district St. John's Church City Old and Historic District

Date/time rec'd:	_____
Rec'd by:	_____
Application #:	_____
Hearing date:	_____

### APPLICANT INFORMATION Check if Billing Contact

Name Christopher Frelke

Phone (804)646-1128

Company Dept. of Parks, Recreation, and Community Facilities

Email Christopher.Frelke@richmondgov.com

Mailing Address 1209 Admiral Street

Applicant Type:  Owner  Agent

Richmond, VA 23220

Lessee  Architect  Contractor

Other (please specify):

### OWNER INFORMATION (if different from above) Check if Billing Contact

Name \_\_\_\_\_

Company \_\_\_\_\_

Mailing Address \_\_\_\_\_

Phone \_\_\_\_\_

\_\_\_\_\_

Email \_\_\_\_\_

### PROJECT INFORMATION

Project Type:  Alteration  Demolition  New Construction  
(Conceptual Review Required)

Project Description: (attach additional sheets if needed)

Please See Attached Description and Documentation

### ACKNOWLEDGEMENT OF RESPONSIBILITY

**Compliance:** If granted, you agree to comply with all conditions of the certificate of appropriateness (COA). Revisions to approved work require staff review and may require a new application and approval from the Commission of Architectural Review (CAR). Failure to comply with the conditions of the COA may result in project delays or legal action. The COA is valid for one (1) year and may be extended for an additional year, upon written request and payment of associated fee.

**Requirements:** A complete application includes all applicable information requested on checklists available on the CAR website to provide a complete and accurate description of existing and proposed conditions, as well as payment of the application fee. Applicants proposing major new construction, including additions, should meet with Staff to review the application and requirements prior to submitting an application. Owner contact information and signature is required. Late or incomplete applications will not be considered.

**Zoning Requirements:** Prior to Commission review, it is the responsibility of the applicant to determine if zoning approval is required and application materials should be prepared in compliance with zoning.

Signature of Owner

Date 4/21/24

## Property

Address: Confederate Soldiers and Sailors Monument, 0 N. 29th Street, Richmond VA, 23223  
Historic District: St. John's Church

## Applicant Information

Name: Christopher Frelke

Company: City of Richmond, Department of Parks, Recreation and Community Facilities

Mailing Address: 1209 Admiral Street, Richmond VA 23220

Phone: (804)646-1128

Email: [Christopher.Frelke@richmondgov.com](mailto:Christopher.Frelke@richmondgov.com)

Applicant Type: Owner

## Project Information

Project Type: Alteration (Relocation/Removal)

Project Description:

On behalf of the City of Richmond and in accordance with [Ord. 2020-154](#), the Department of Parks, Recreation, and Community Facilities requests a CAR Certificate of Appropriateness for **permission for the ability to remove** a monument and pedestal from the St. John's Church City Old and Historic District. The Confederate Soldiers and Sailors Monument and pedestal at 0 N. 29th Street is an asset of the Department of Parks, Recreation and Community Facilities.

As specific CAR guidance for removal is not enumerated, this application is based on the CAR guidance for Relocation and the Department of Historic Resources (DHR) "Guidance Regarding Confederate Monuments." Per [Section 15.2-1812 of the Code of Virginia](#) (effective July 1, 2020), the General Assembly has granted authority to the City Council to decide upon the future location/receivership of these City assets; therefore, this application for appropriateness does not speculate where any of these assets may or should end up. Further, beyond providing what the temporary restoration of each site could look like upon removal to maintain health, human safety, traffic flow, and landscape continuity, this application does not propose what should exist on these sites in the future.

Richmond has a dark history. As the second largest center for the domestic slave trade in the United States and the former Capital of the Confederacy, Richmond was a center of oppression. In 1890, the Robert E. Lee monument was unveiled in the City of Richmond. Following the unveiling of the Lee Monument, the city also assembled a collection of Lost Cause equestrian statuary along Monument Avenue and elsewhere in the city, the likes of which existed nowhere else in the United States. These monuments were symbols of oppression and inequality. As we continue to erase the city's former title as the "Capital of the Confederacy," we have to ensure that we learn from our past mistakes.

Justification for this application for appropriateness is further rooted in the City Charter and the City Code. Code §30-100 outlines the purposes of the zoning ordinance. The ability to remove the monument and pedestal will (3) Promote health, sanitation and general welfare, as well as

(7) Facilitate the creation of a convenient, attractive and harmonious community. Code §30-930.2 (4) outlines the purposes of City Old and Historic Districts. Ability to remove the monument and pedestal will provide for (4) The enhancement of the quality of life for residents. Charter § 2.04 of the Charter provides the City power to make regulations for the preservation of the morals of the city and its inhabitants. The representation of white supremacy and the legacy of slavery in prominent public places through this monument is of questionable morality. Charter § 2.04 of the Charter provides the City power to prevent riots, disturbances, and disorderly assemblages. Based on the events of the last year, and similar events in other cities, the ability to remove monuments and pedestals could be considered such a prevention effort.

Attachment 1 shows the existing condition of the site including an aerial view map with City Old and Historic District Boundaries, and pictures of the monument and pedestal from the North, South, East and West as of 4/21/21.

Attachment 2, page 10, provided by VHB shows suggestions for the *temporary* restoration of the site should removal proceed in the future.

Attachment 3, page 1 prepared by Paul DiPasquale provides technical considerations specific to the Confederate Soldiers and Sailors Monument should removal proceed in the future.

Attachment 4, cost basis for temporary restoration items



Source: Esri, Maxar, GeoEye, Earthstar Geographics, CNES/Airbus DS, USDA, USGS, AeroGRID, IGN, and the GIS User Community



Facing South



Facing West



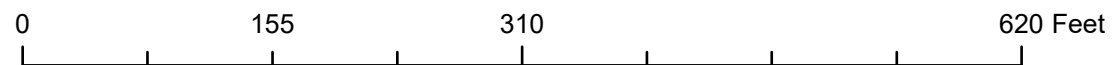
Facing North



Facing East

# Soldiers & Sailors

St. John's Church City Old & Historic District





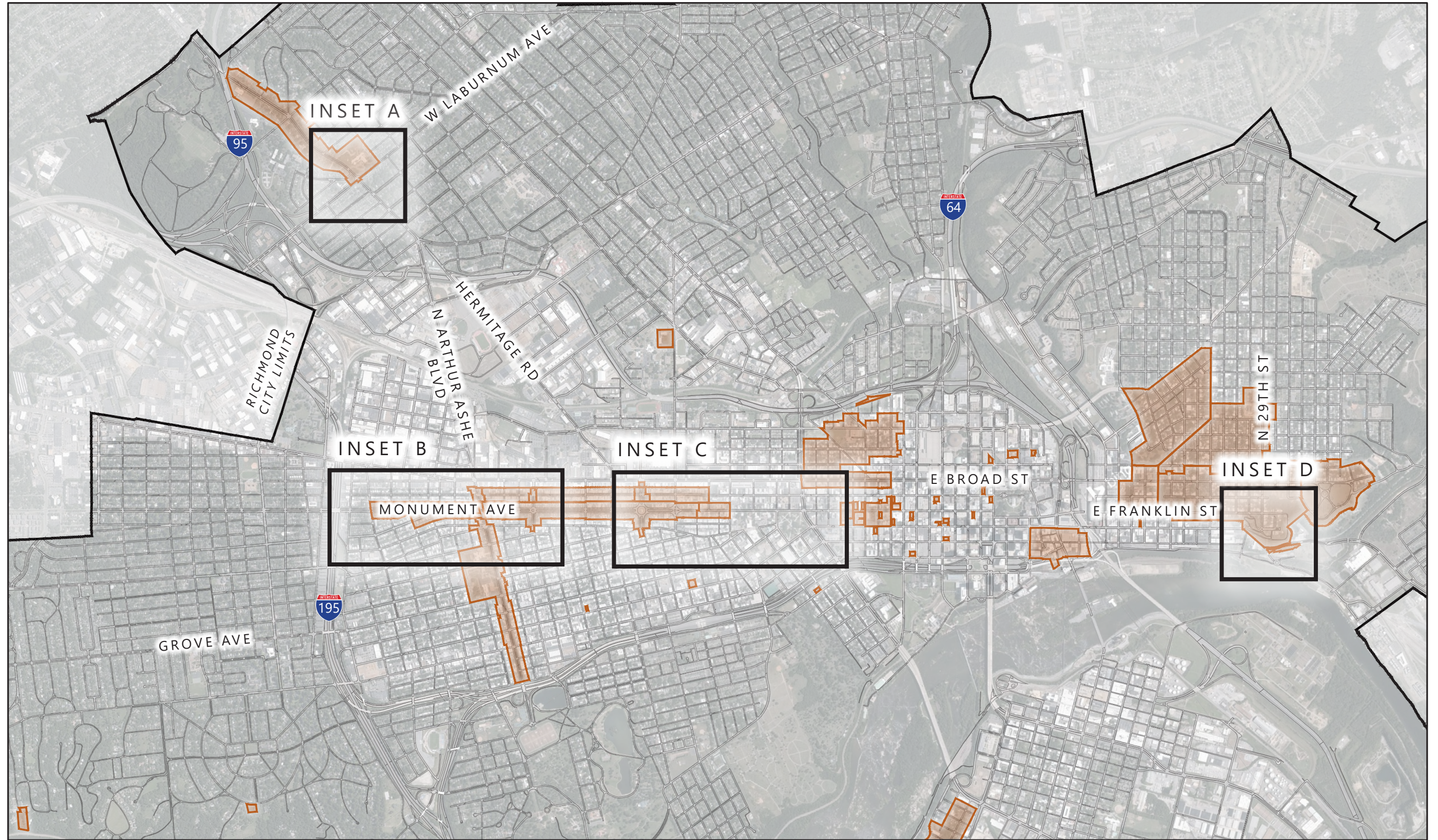
# Monument Removal and Temporary Restoration

Richmond, Virginia


April 2021



# Monument Locations

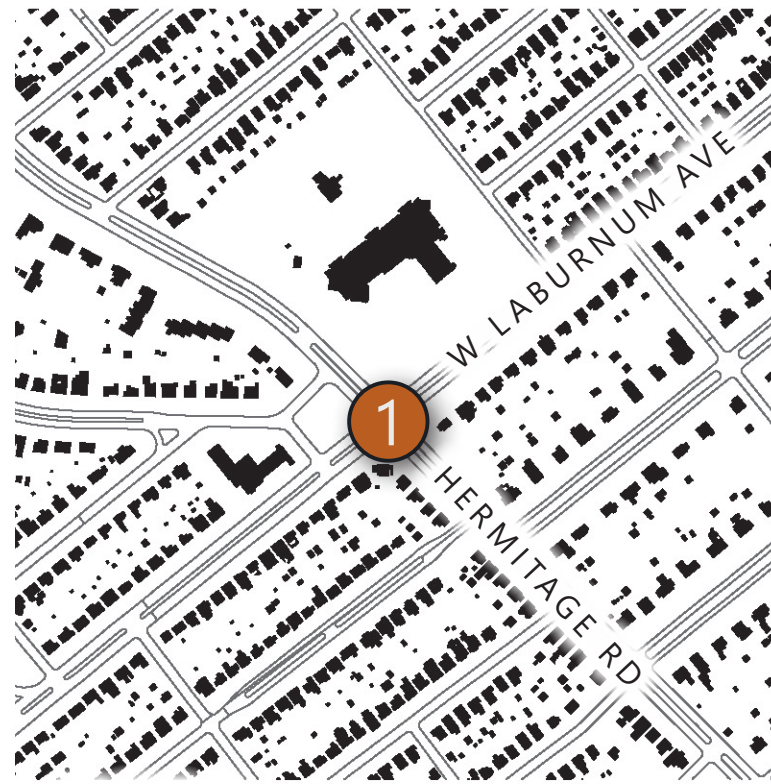


## LEGEND

 Old and Historic Districts

SCALE IN FEET





INSET A



INSET B



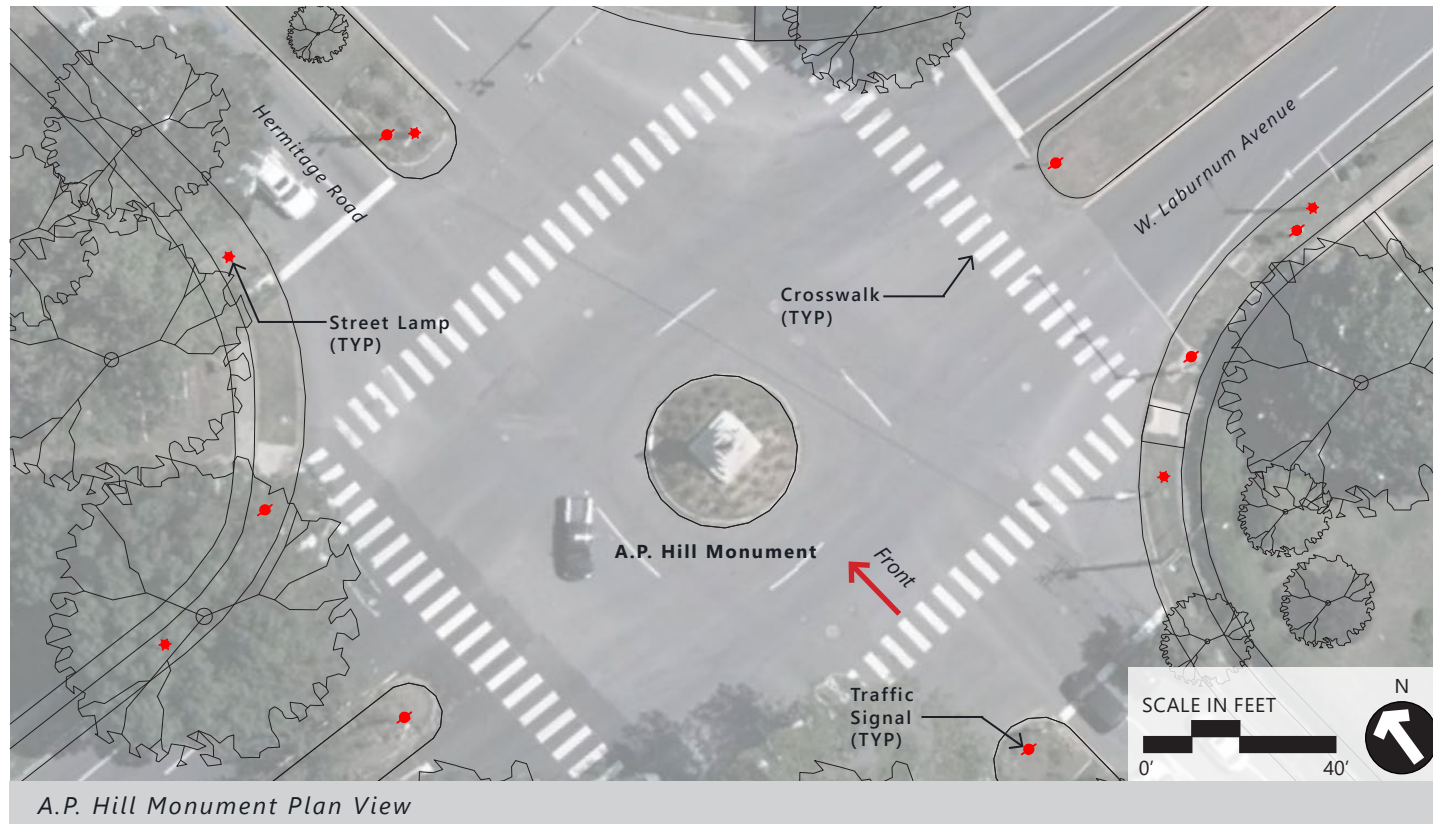
INSET C



INSET D

- |                              |   |
|------------------------------|---|
| ① A.P. Hill Monument         | ⑤ Confederate Cannon #1                     |
| ② Matthew F. Maury Monument  | ⑥ J.E.B. Stuart Monument                    |
| ③ Stonewall Jackson Monument | ⑦ Confederate Soldiers and Sailors Monument |
| ④ Jefferson Davis Monument   |   |





A.P. Hill Monument Plan View



Removal and Temporary Restoration Sketch



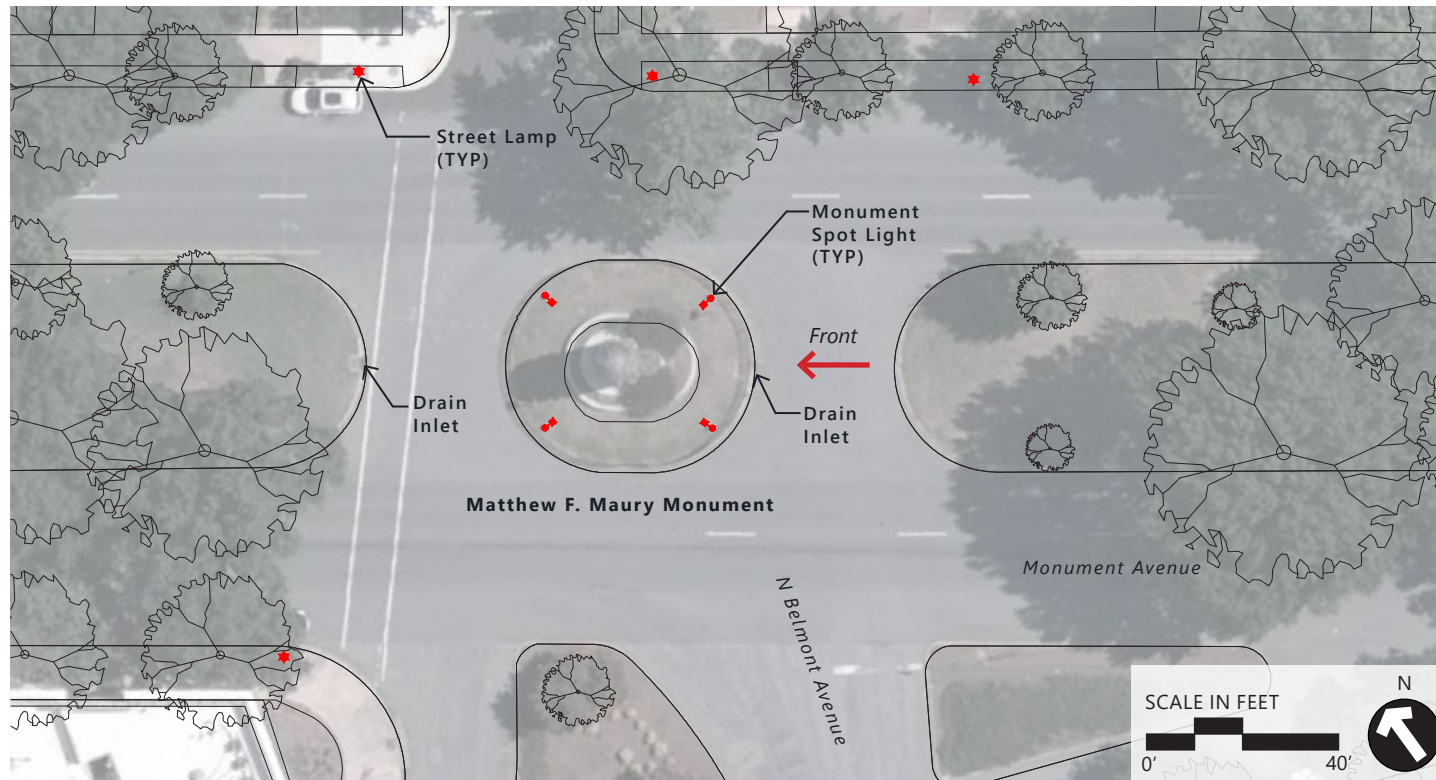
A.P. Hill Monument

### GENERAL NOTES

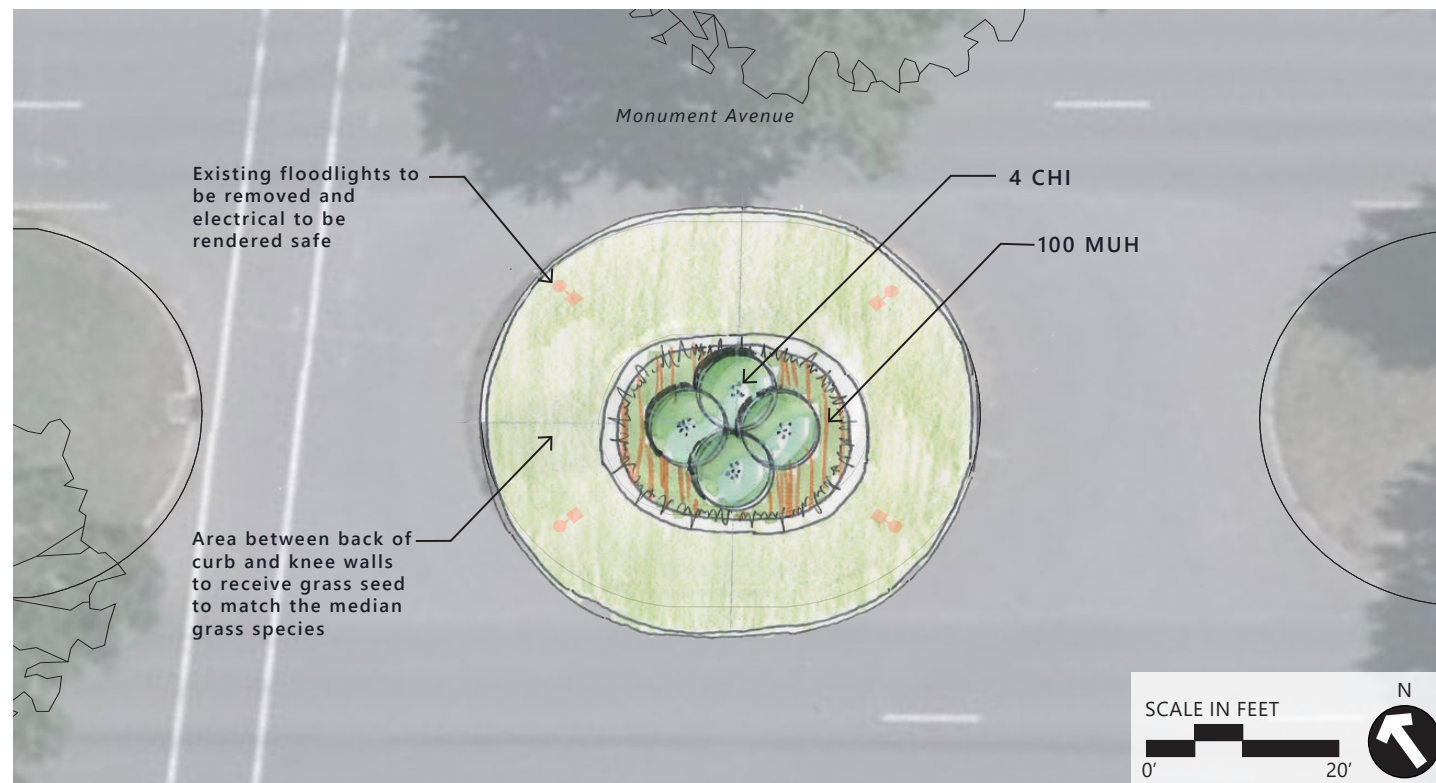
1. Removal of the stone associated with the monument is not part of this document and will be addressed separately.
2. Existing median infrastructure to be completely removed and the area paved with asphalt.

Plant List and General Notes





Matthew F. Maury Monument Plan View



Removal and Temporary Restoration Sketch



Matthew F. Maury Monument

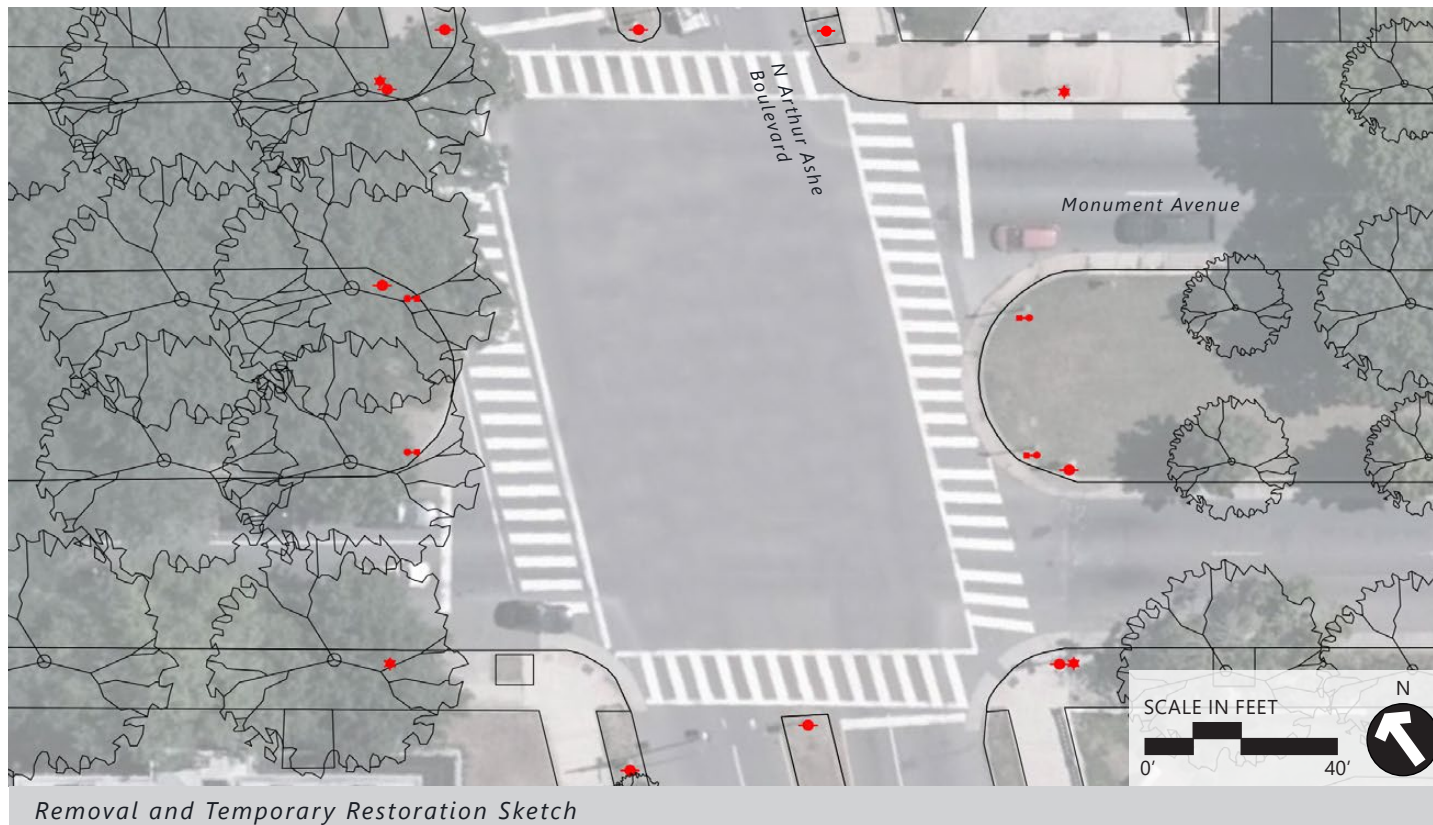
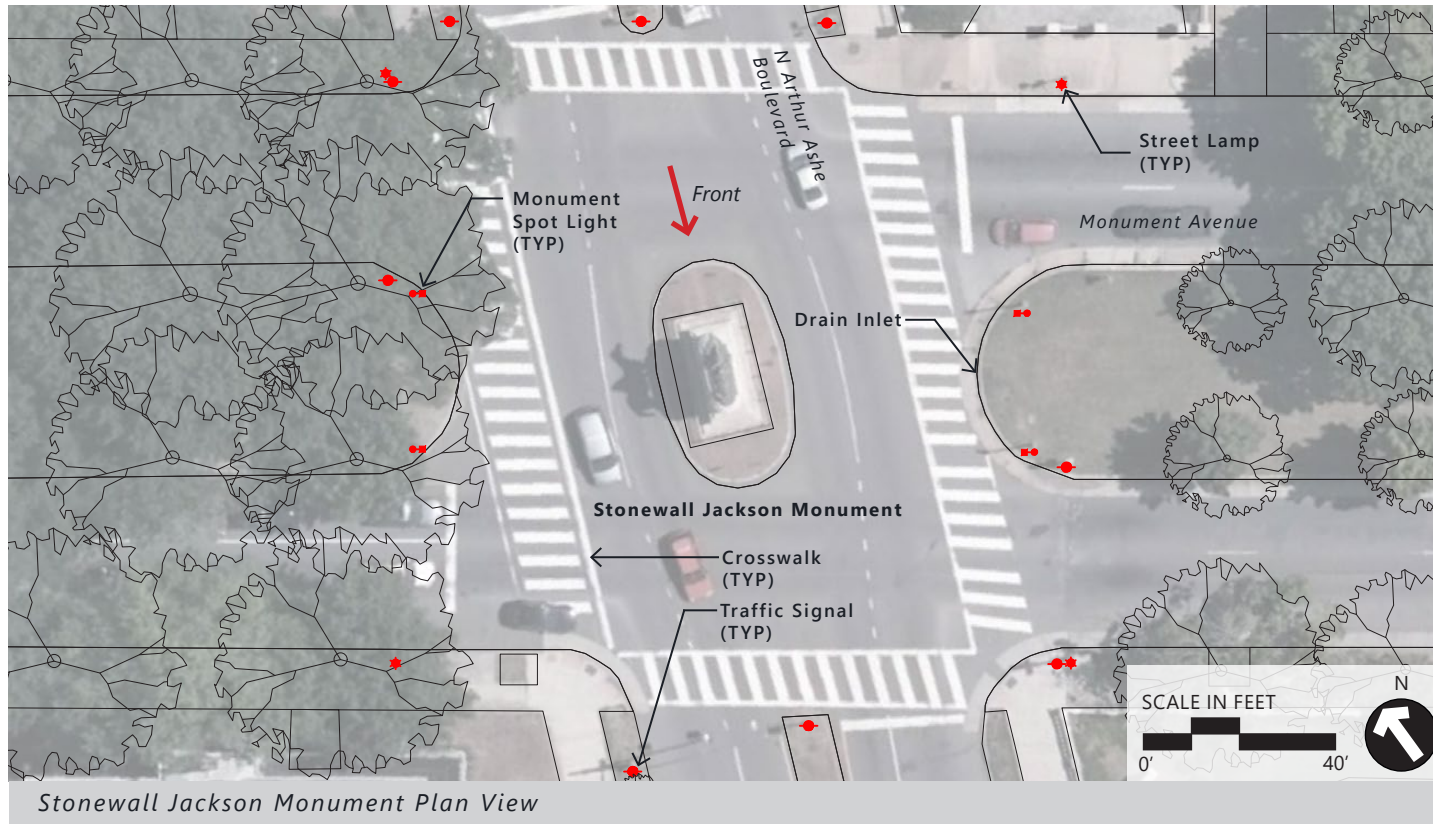
### GENERAL NOTES

1. Removal of the stone associated with the monument is not part of this document and will be addressed separately.
2. The small retaining wall stone to remain in place and the monument and base stones to be removed.
3. Grading of the disturbed area should direct rain runoff over the curb and into the roadway stormwater system.

### PLANT LIST

Symbol	Qty	Botanical Name	Common Name	Specification
<b>Large Shrubs</b>				
CHI	4	Chionanthus virginicus	White Fringetree	5' Ht., 3'-4' Spr., Multi Stem, As shown
<b>Grasses</b>				
MUH	100	Muhlenbergia capillaris	Pink Muhly Grass	#1, 12" x 8", 24" o.c.

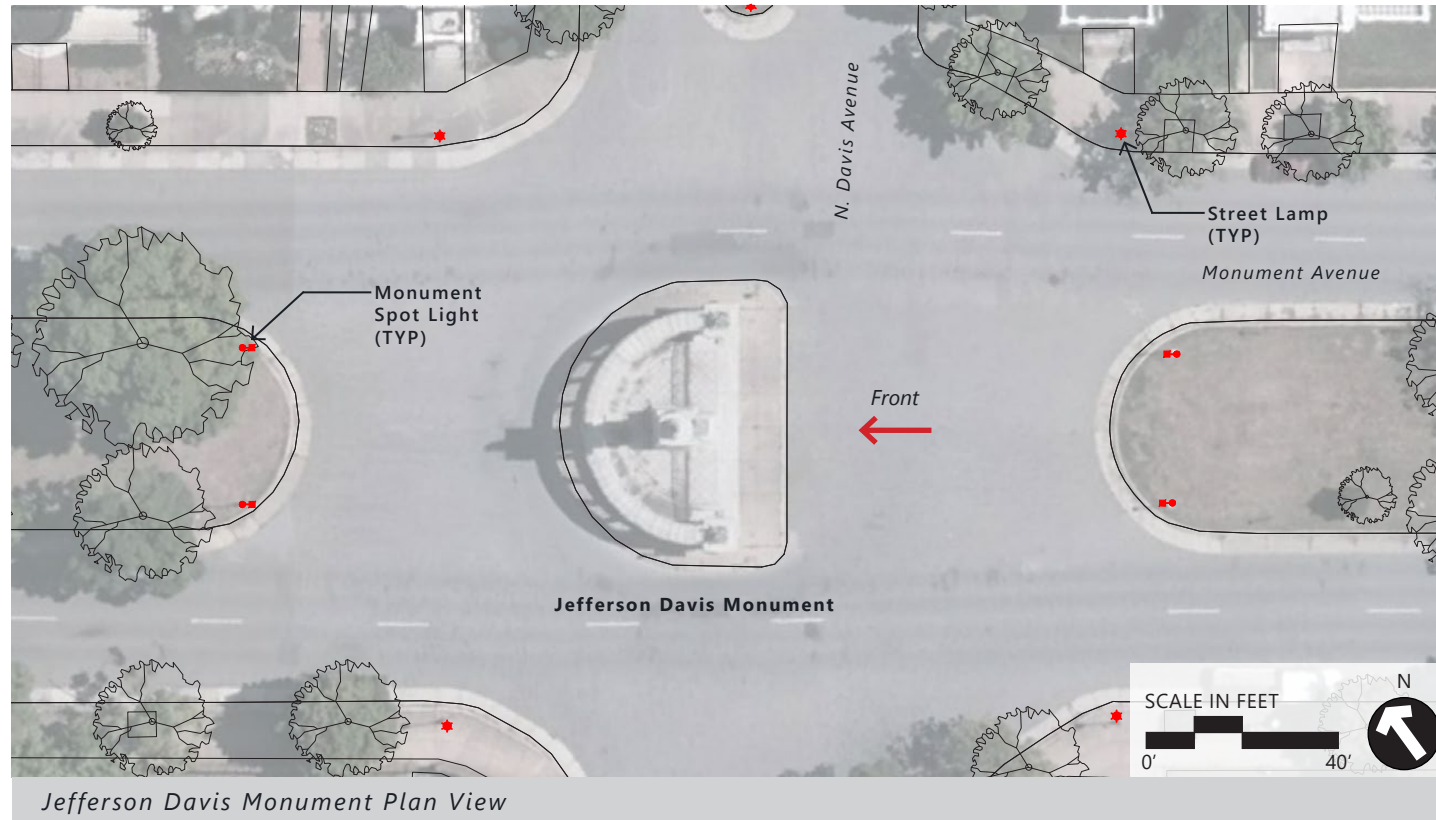
Plant List and General Notes



### GENERAL NOTES

1. Removal of the stone associated with the monument is not part of this document and will be addressed separately.
2. Existing median infrastructure to be completely removed and the area paved with asphalt.

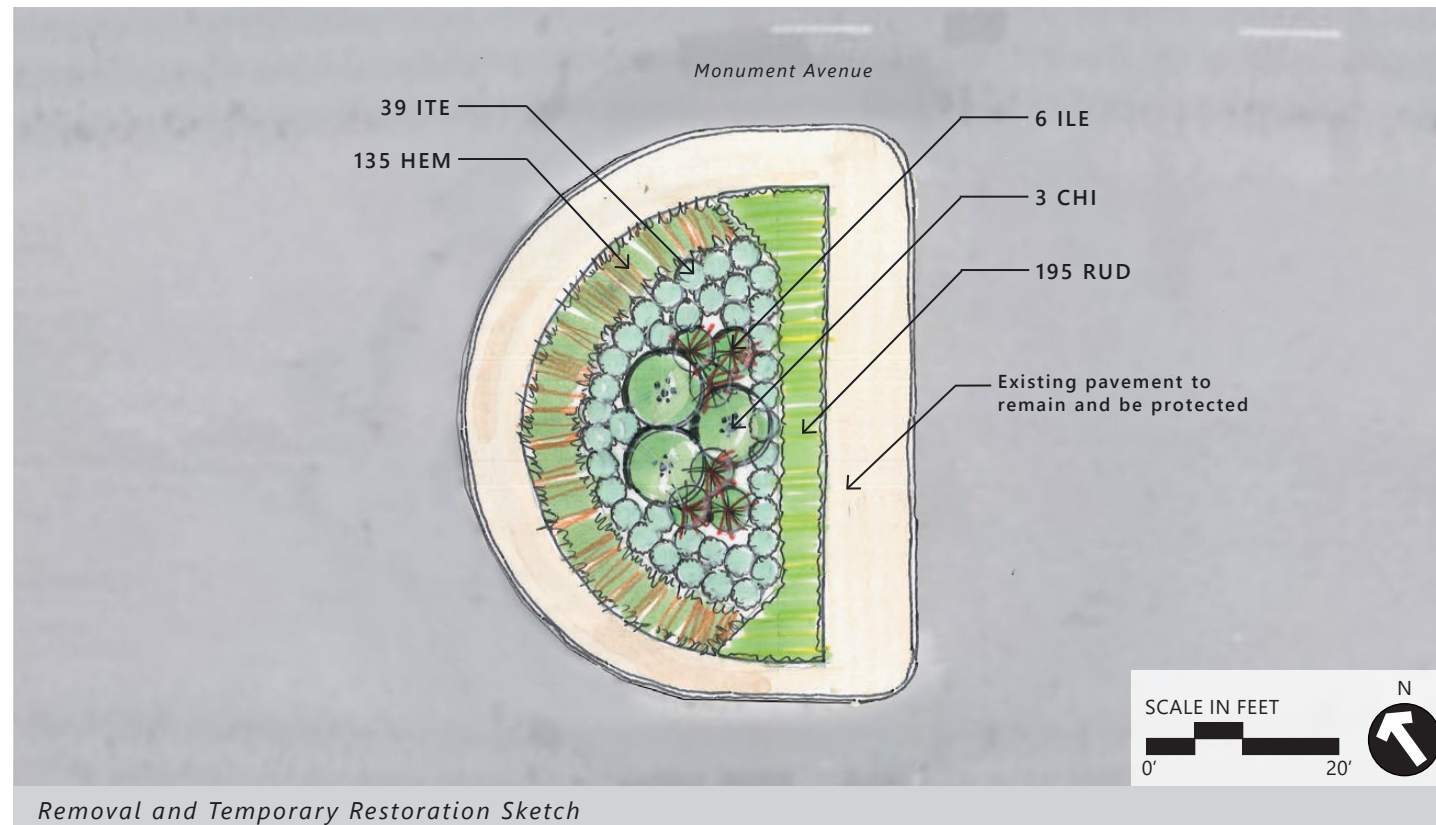
Plant List and General Notes



Jefferson Davis Monument Plan View



Jefferson Davis Monument



Removal and Temporary Restoration Sketch

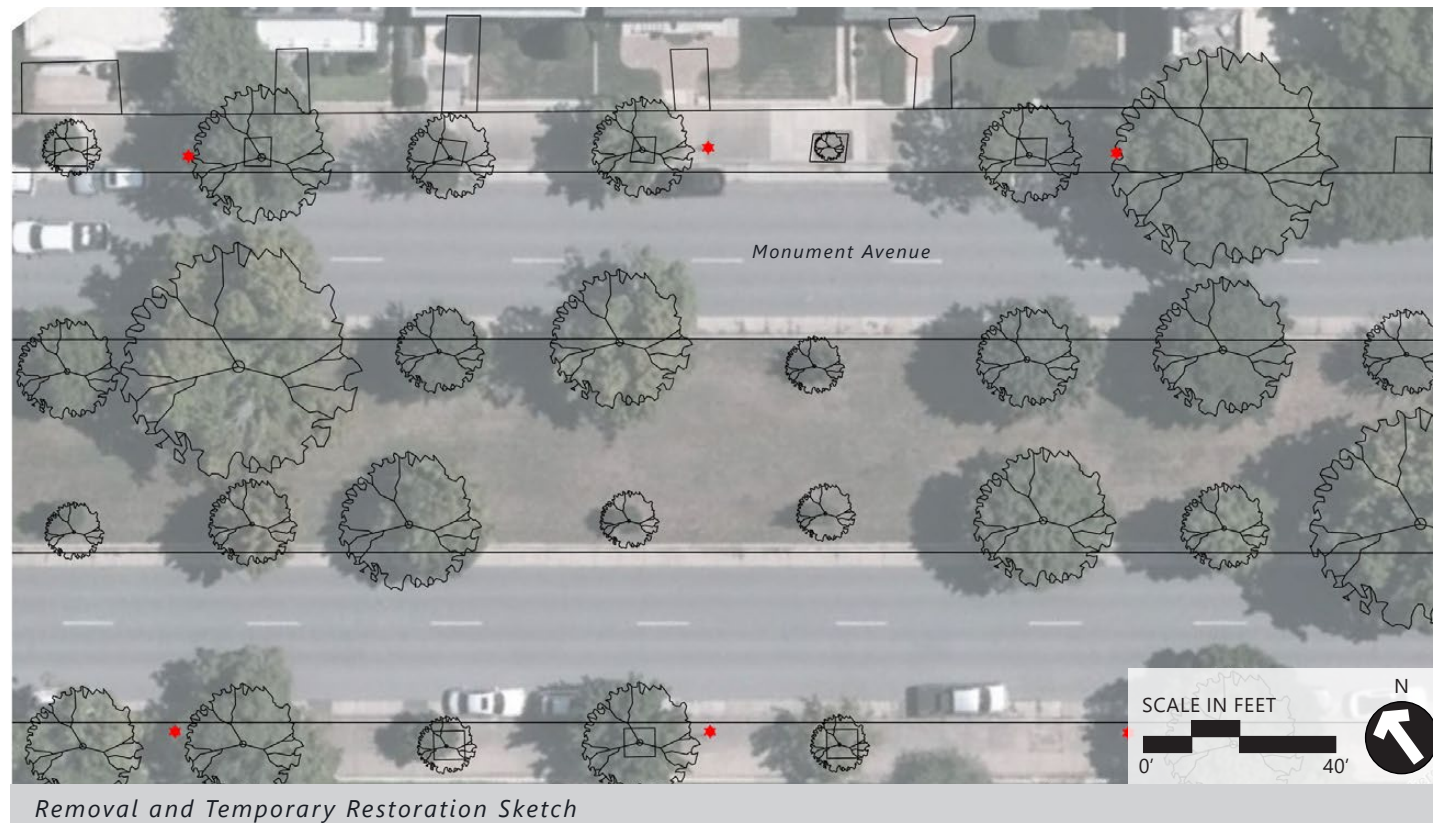
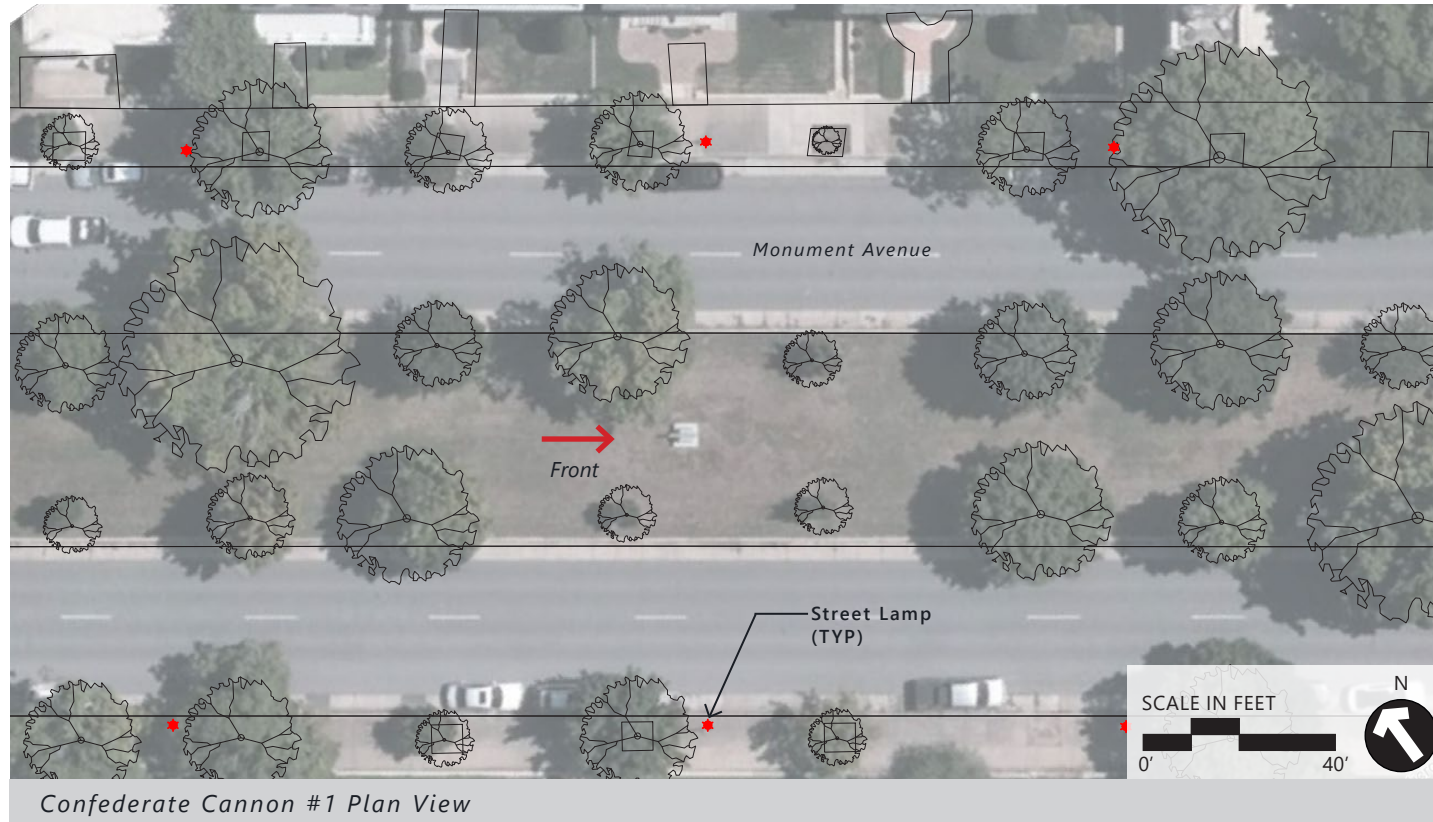
### GENERAL NOTES

1. Removal of the stone associated with the monument is not part of this document and will be addressed separately.
2. Grading of the disturbed area should direct rain runoff from the center of the planting area, across the pavement to remain and over the curb and into the roadway stormwater system.

### PLANT LIST

Symbol	Qty	Botanical Name	Common Name	Specification
<b>Large Shrubs</b>				
CHI	3	Chionanthus virginicus	White Fringetree	5' Ht., 3'-4' Spr., Multi Stem, As shown
ILE	6	Ilex verticillata	Winterberry	#5, 24" x 18", 48" o.c.
<b>Small Shrubs</b>				
HEM	135	Hemerocallis spp.	Daylily species	#1, 12" x 8", 18" o.c.
ITE	39	Itea virginica 'Henry's Garnet'	Virginia Sweetspire	#3, 15" x 15", 36" o.c.
RUD	195	Rudbeckia fulgida sullivantii 'Goldsturm'	Blackeyed Susan	4" Pots, 10" x 6", 15" o.c.

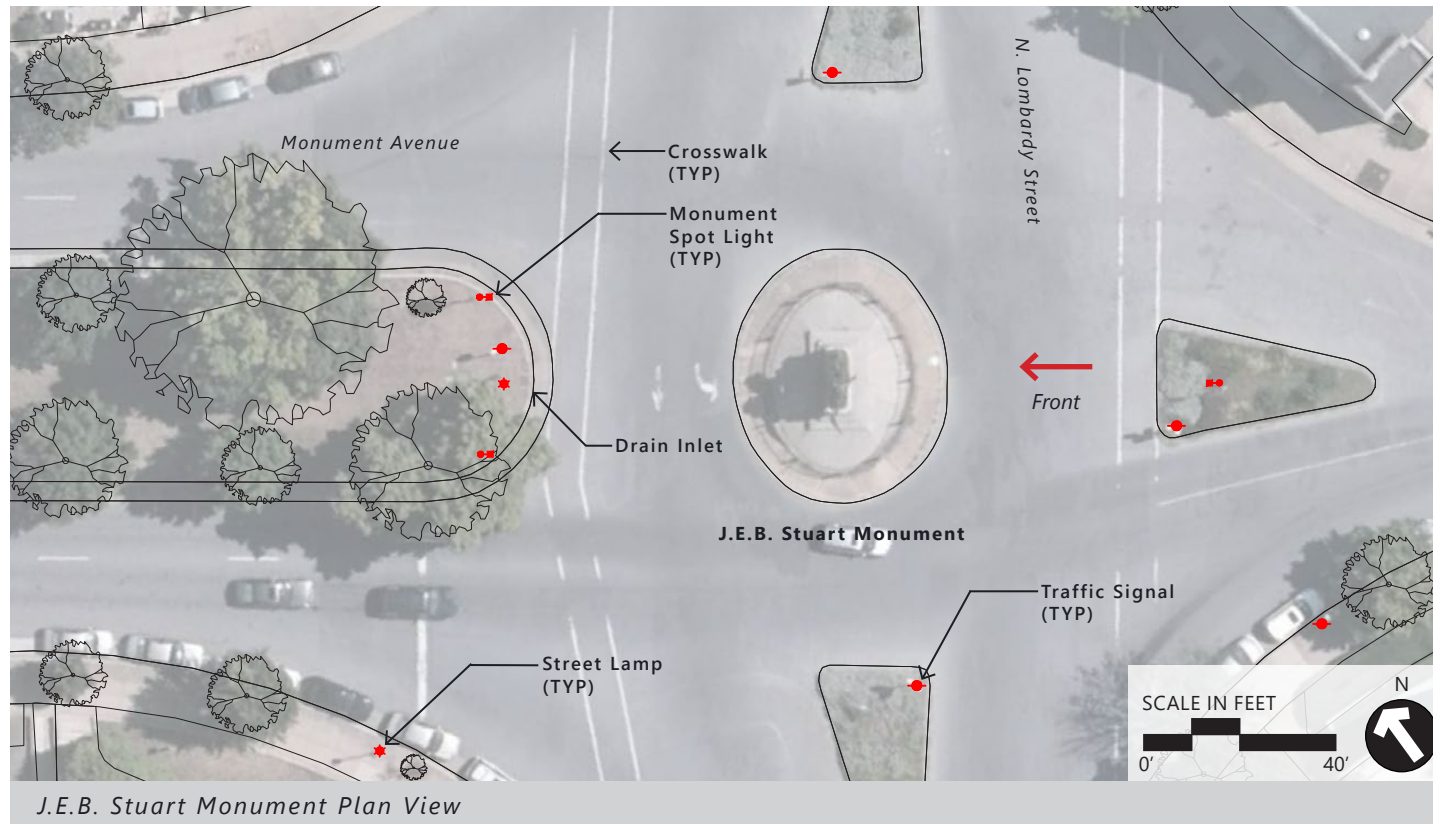
Plant List and General Notes



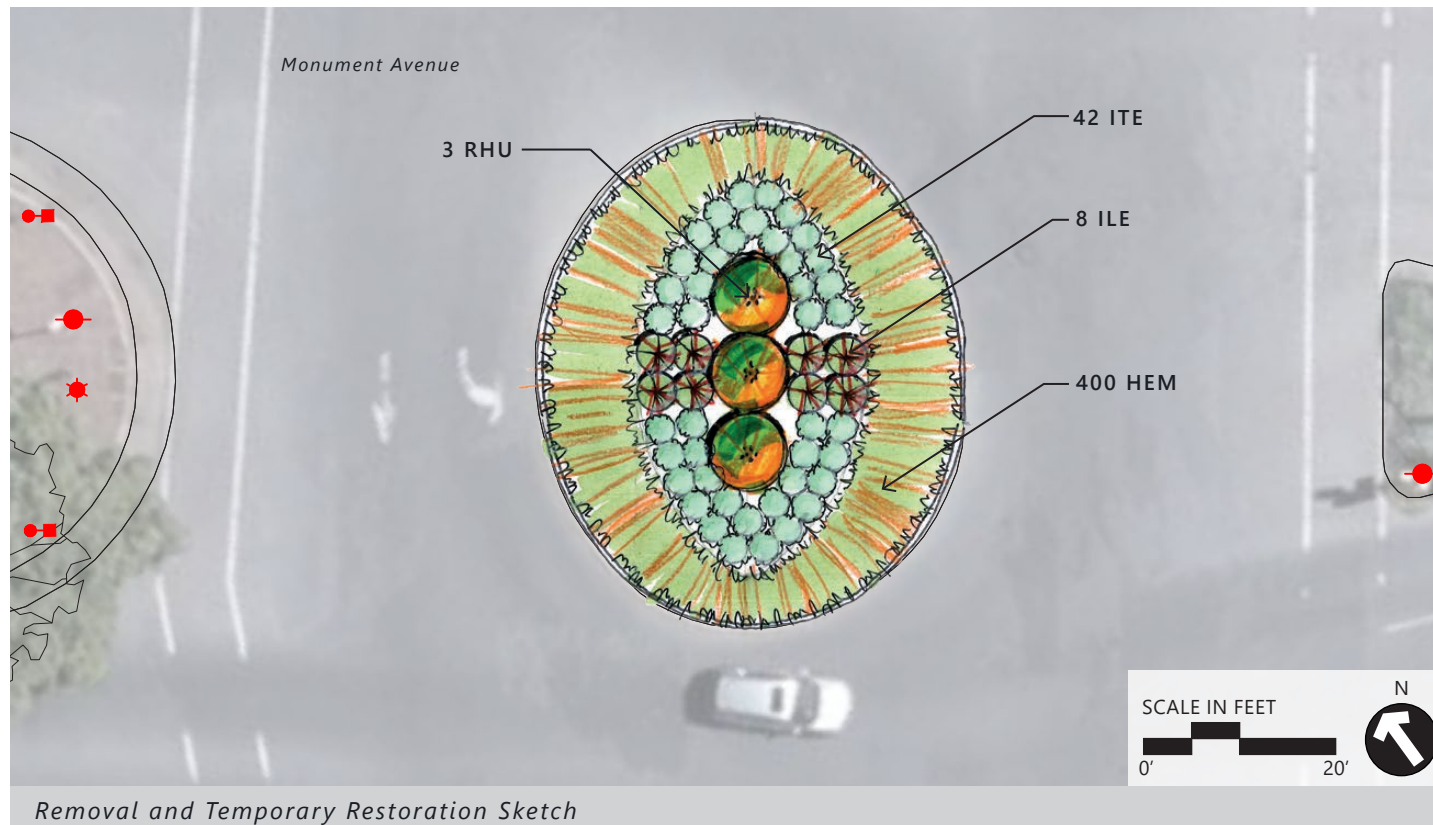
**GENERAL NOTES**

1. Removal of the stone associated with the monument is not part of this document and will be addressed separately.
2. The disturbed area following removal of the cannon and base shall be seeded to match the grass species of the surrounding area.

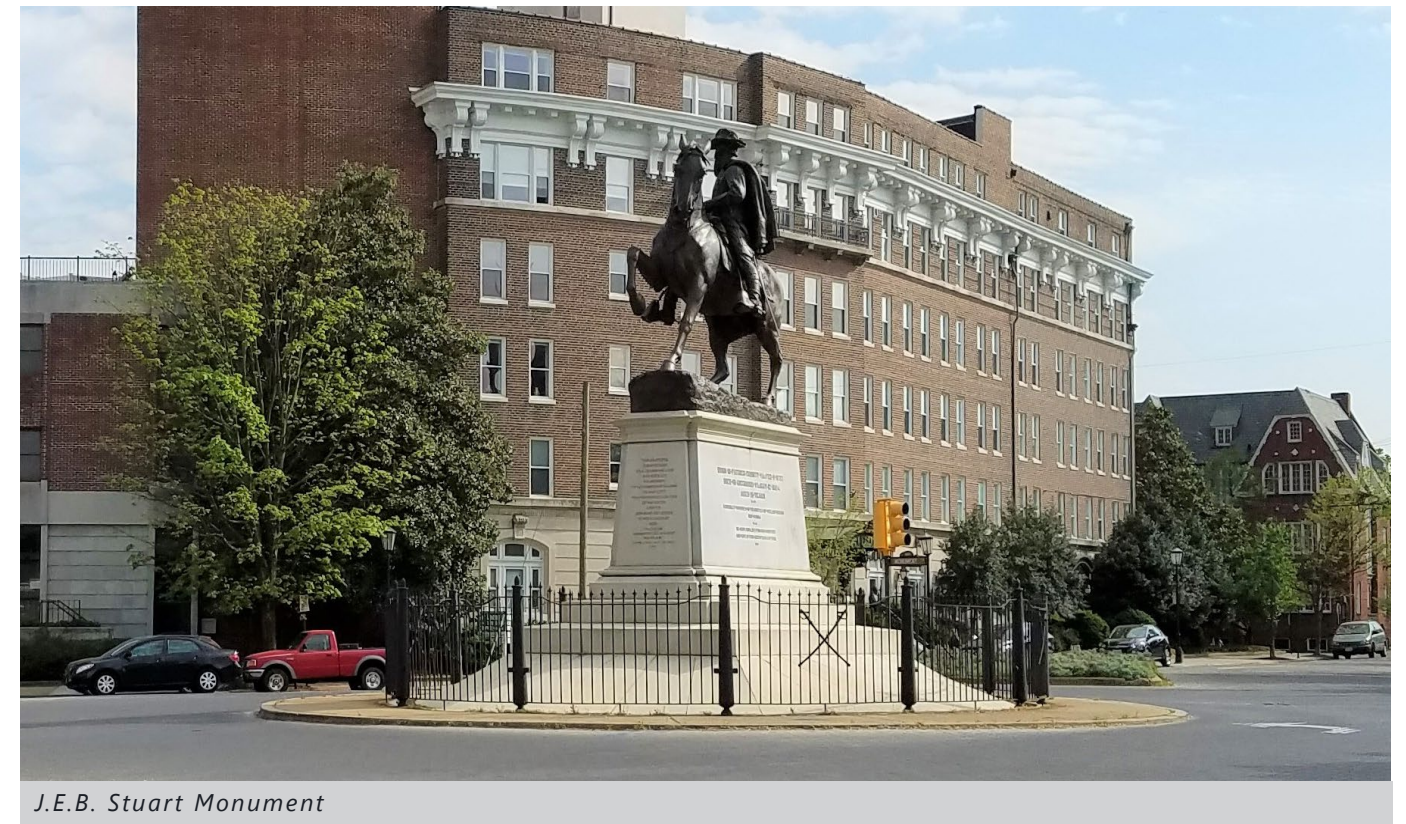
Plant List and General Notes



J.E.B. Stuart Monument Plan View



Removal and Temporary Restoration Sketch



J.E.B. Stuart Monument

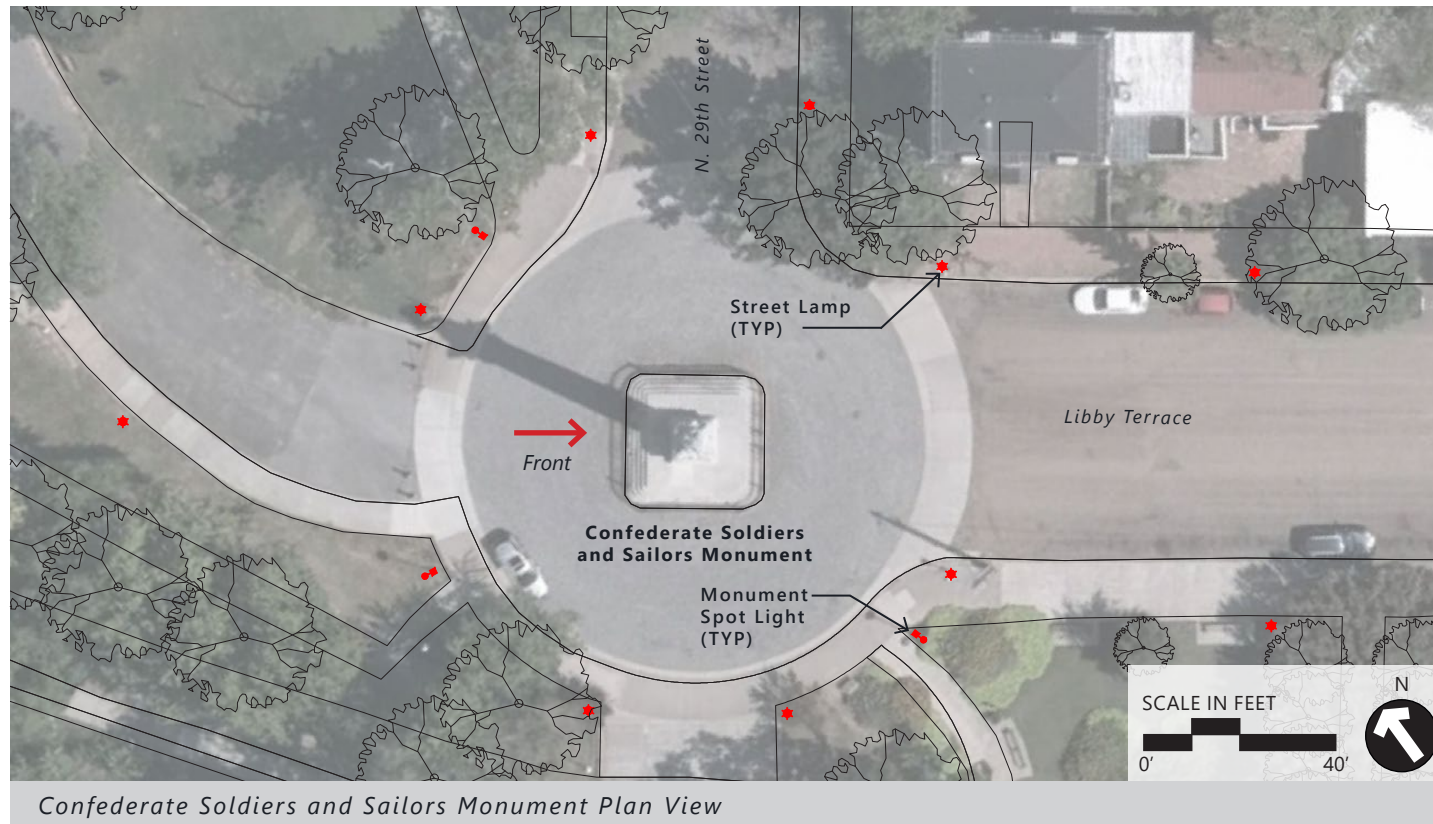
GENERAL NOTES

1. Removal of the stone associated with the monument is not part of this document and will be addressed separately.
2. Grading of the disturbed area should direct rain runoff from the center of the planting area and over the curb and into the roadway stormwater system.

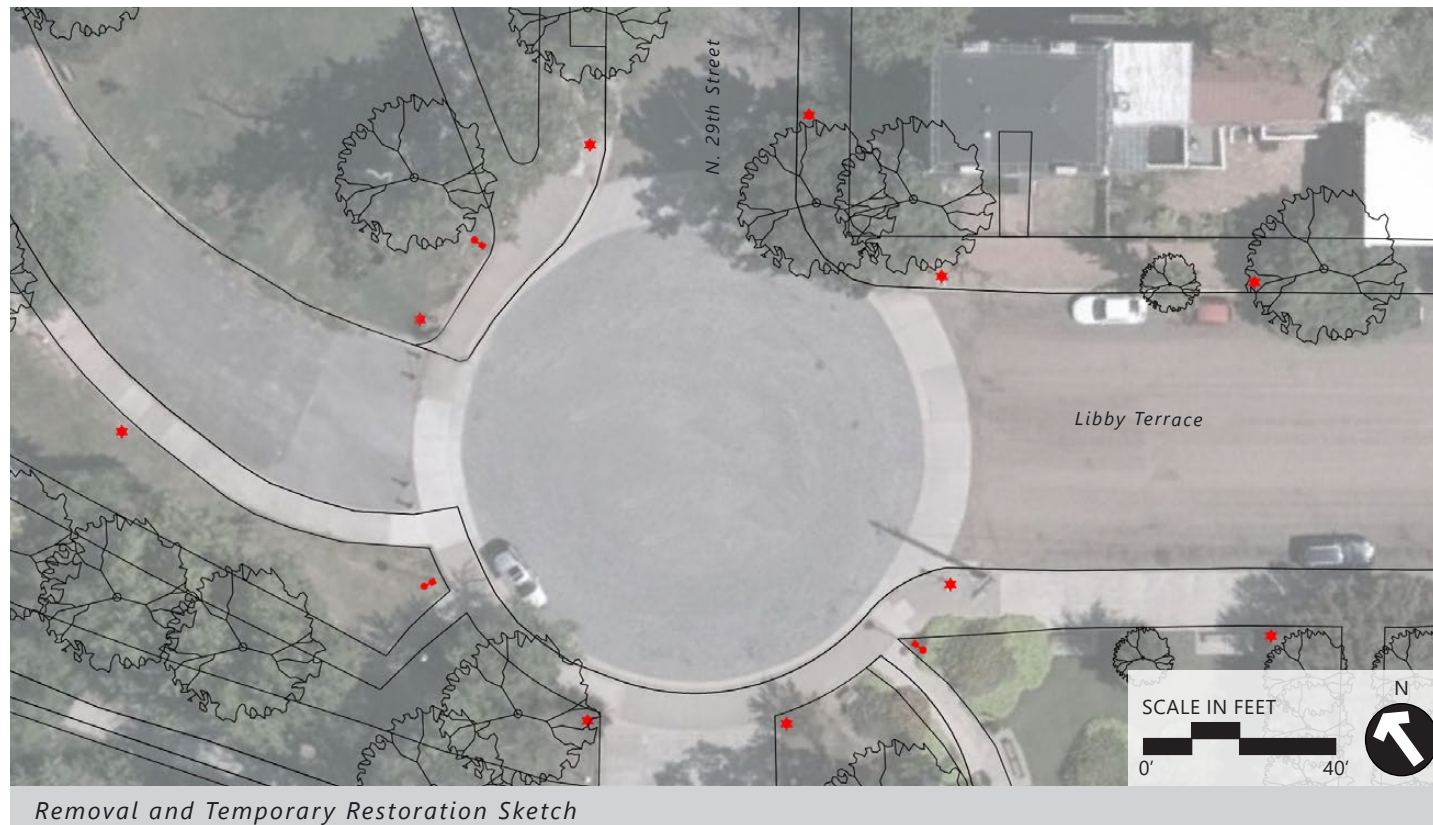
PLANT LIST

Symbol	Qty	Botanical Name	Common Name	Specification
<b>Large Shrubs</b>				
RHU	3	Rhus typhina	Staghorn Sumac	5' Ht., 3'-4' Spr., Multi Stem, As shown
ILE	8	Ilex verticillata	Winterberry	#5, 24" x 18", 48" o.c.
<b>Small Shrubs</b>				
HEM	400	Hemerocallis spp.	Daylily species	#1, 12" x 8", 18" o.c.
ITE	42	Itea virginica 'Henry's Garnet'	Virginia Sweetspire	#7, 20" x 20", 4' o.c.

Plant List and General Notes



Confederate Soldiers and Sailors Monument Plan View



Removal and Temporary Restoration Sketch



Confederate Soldiers and Sailors Monument

## GENERAL NOTES

1. Removal of the stone associated with the monument is not part of this document and will be addressed separately.
2. The monument, steps, fence, and curb to be removed and replaced with granite cobblestone paving to match the existing paving from the Department of Public Works inventory.

Plant List and General Notes

## Large Shrubs



*Chionanthus virginicus*  
White Fringetree



*Ilex verticillata*  
Winterberry



*Rhus typhina*  
Staghorn Sumac

## Small Shrubs



*Hemerocallis* spp.  
Daylily species



*Itea virginica* 'Henry's Garnet'  
Virginia Sweetspire



*Rudbeckia fulgida sullivanii* 'Goldsturm'  
Blackeyed Susan

## Grasses



*Muhlenbergia capillaris*  
Pink Muhly Grass

## **DISASSEMBLY OF A.P. HILL GRAVE MEMORIAL AND THE 5 CONFEDERATE MONUMENT PEDESTAL BASES ON MONUMENT AVENUE**

### **INTRODUCTION:**

All six pedestal bases are constructed of granite blocks and plinths.  
All have capstones had bronze statuary base plates attached with bronze pins or bolts.  
Some capstones may have a lightening rod attachment into and through the pedestal base.  
All granite components must be crane lifted with straps for disassembly.

Typically, all stone components are dry laid; any mortar is only applied to hide surface joinery. This mortar is removed prior to lifting by crew using a hand grinder with a stone blade; access is by man-lift. Some of the pedestal bases may have internal/hidden bronze pins or straps which may need to be cut or removed prior to lifting. Holes may need to be drilled into the hidden face of some stone components to allow for pin insertion and lifting access.

Typically, base blocks which square off the foundation are filled with concrete and demolition is required.

### **A.P. HILL GRAVE MEMORIAL: (For picture, see page 3/3)**

#### Statue Removal:

Unbolt pins or, if necessary, cut out pins from base plate for the release of the statue baseplate. Cut plate will be welded back in place after removal of the statue.

Possible lightening rod and cable may be attached to baseplate and must be cut.  
Statue is strapped by chest and arms for crane lift and transported on tire dunnage or pallet with dunnage if required.

#### Stone removal:

45 block and plinth stones compose the pedestal base, plus a stone and brick sarcophagus below grade. Human remains removal coordinated by Department of Historic resources.

#### Access:

Ample room in the roundabout intersection for crew and equipment, however this is a heavily trafficked commuter route so security and detour strategy must be planned.

3 day minimum disassembly, likely more depending on contractor's needs.

### **CONFEDERATE SOLDIER AND SAILOR'S: (For picture, see page 3/3)**

#### Stone removal:

90 ft. height of the column base requires added considerations for wind and weather.  
There are 104 stone components, or more; the very large cap stone group (8 stones) and 13 disc stones are very heavy and this removal is made more challenging due to the height.

Five (5) base plinths and 48 slab/plinths total all the stones to grade

#### Access:

Ample room in the roundabout intersection for crew and equipment; minimal traffic control- resident access only; some security needed at park boundary.

Contractor must appraise time needed for entire removal to grade.



(Continued)

**DISASSEMBLY OF A.P. HILL GRAVE MEMORIAL AND THE 5 CONFEDERATE  
MONUMENT PEDESTAL BASES ON MONUMENT AVENUE**

**J.E.B. STUART: (For picture, see page 3/3)**

Stone removal:

120 block and plinth stones compose the pedestal base: cap stone 2; face plinths 4; architrave (molding) 10; block/plinths 26; slab plinths 28; curb blocks 28.

Access:

Ample room in the roundabout intersection for crew and equipment, however this is a heavily trafficked intersection so security and detour strategy may be extensive.

3 day minimum disassembly, likely more depending on contractor's needs.

Contractor must appraise time needed for entire removal to grade.

**JEFFERSON DAVIS: (For picture, see page 3/3)**

Stone removal:

Initial removal would likely include the capstone group, column discs and rings and column base plinths; this totals 20 large stone components with multiple bronze stars, letters and a plaque still attached; the Davis bronze statue base totals 6 plinth blocks.

Removal of these 26 large statuary related components would clear the center space for the amphitheater-like structure. Complete removal of the over 300 architectural stone components for this part of the memorial will be a multi-week long project and will require contractor's appraisal for an accurate estimate of time required for such.

**STONEWALL JACKSON: (For picture, see page 3/3)**

Stone removal:

32 block and plinth stones, some very large, compose this pedestal base. In addition to demolition of interior concrete, the brick pavers and concrete curb will also need to be demolished to remove everything grade.

Access:

Ample room in the roundabout intersection for crew and equipment, however this is a heavily trafficked intersection so security and detour strategy may be extensive.

3 day minimum disassembly, likely more depending on contractor's needs.

Contractor must appraise time needed for entire removal to grade.

**MATTHEW FONTAINE MAURY: (For picture, see page 3/3)**

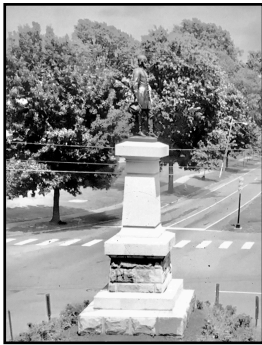
Stone removal:

72 block and plinth stones compose the globe and the statue pedestal bases and curbing.

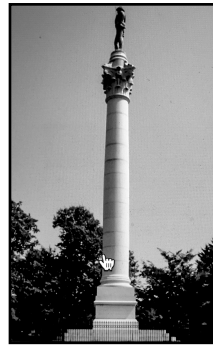
In addition to demolition of interior concrete, the brick pavers and concrete curb will also need to be demolished to remove everything to grade.

(Continued, Confederate Statues Base Pedestal Pictures)  
**DISASSEMBLY OF A.P. HILL GRAVE MEMORIAL AND THE 5 CONFEDERATE  
MONUMENT PEDESTAL BASES ON MONUMENT AVENUE**

**A.P. HILL GRAVE MEMORIAL:**



**CONFEDERATE SOLDIER AND SAILOR'S :**



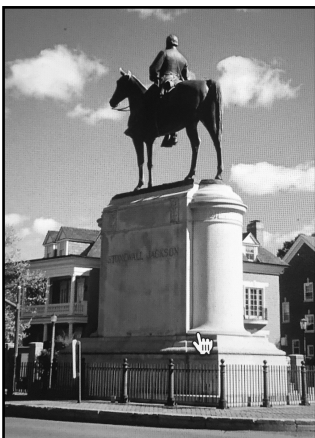
**J.E.B. STUART**



**JEFFERSON DAVIS MEMORIAL**



**STONEWALL JACKSON:**



**MATTHEW FONTAINE MAURY:**



North Carolina Department of Transportation  
Preliminary Estimate

City of Richmond Confederate Monument Location Temporary Treatments  
#1 - A.P. Hill Monument

Requested By: Wayne Robinson, PLA - VHB

Date 4/30/2021

Line Item	Description	Quantity	Unit	Price	Amount
1	Mobilization	1	LS	\$ 2,500.00	\$ 2,500.00
2	Maintenance of Traffic	1	LS	\$ 10,000.00	\$ 10,000.00
3	Erosion and Sediment Control/Inlet Protection	1	LS	\$ 5,000.00	\$ 5,000.00
4	Clearing and Grubbing	0	Acres	\$ -	\$ -
5	Supplementary Clearing and Grubbing	0	Acres	\$ -	\$ -
6	Unclassified Excavation	130	CY	\$ 32.00	\$ 4,160.00
7	Borrow Excavation	0	CY	\$ 32.00	\$ -
8	Removal of Existing Asphalt Pavement 8"	0	SY	\$ 115.00	\$ -
9	Removal of Existing Concrete 6"	0	SY	\$ 125.00	\$ -
10	Fine Grading	0	SY	\$ 20.00	\$ -
11	Compacted Fill	30	CY	\$ 30.00	\$ 900.00
12	Base Rock - compacted	20	CY	\$ 60.00	\$ 1,200.00
13	Asphalt - City DPW Standard	88	SY	\$ 110.00	\$ 9,680.00

**Estimated Cost ..... \$ 33,440.00**

North Carolina Department of Transportation  
Preliminary Estimate

City of Richmond Confederate Monument Location Temporary Treatments  
#2 - Matthew F. Maury Monument

Requested By: Wayne Robinson, PLA - VHB

Date

4/30/2021

Line Item	Description	Quantity	Unit	Price	Amount
1	Mobilization	1	LS	\$ 2,500.00	\$ 2,500.00
2	Maintenance of Traffic	1	LS	\$ 10,000.00	\$ 10,000.00
3	Erosion and Sediment Control/Inlet Protection	1	LS	\$ 5,000.00	\$ 5,000.00
4	Clearing and Grubbing	0	Acres	\$ -	\$ -
5	Supplementary Clearing and Grubbing	0	Acres	\$ -	\$ -
6	Unclassified Excavation	36	CY	\$ 32.00	\$ 1,152.00
7	Borrow Excavation	0	CY	\$ 32.00	\$ -
8	Removal of Existing Asphalt Pavement 8"	0	SY	\$ 115.00	\$ -
9	Removal of Existing Concrete 6"	0	SY	\$ 125.00	\$ -
10	Fine Grading	54	SY	\$ 20.00	\$ 1,080.00
11	Compacted Fill	0	CY	\$ 30.00	\$ -
12	Planting Mix	40	CY	\$ 50.00	\$ 2,000.00
13	Soil Prep for Sod/Seed	153	SY	\$ 25.00	\$ 3,825.00
14	Sod - Fescue	153	SY	\$ 8.00	\$ 1,224.00
15	Chionanthus virginicus - White Fringetree - 5' Ht., Multi	4	EA	\$ 250.00	\$ 1,000.00
16	Muhlenbergia capillaris - Mhuly Grass - #1	100	EA	\$ 12.00	\$ 1,200.00
15	Mulch	153	LS	\$ 8.00	\$ 1,224.00
16	Watering During Establishment - 90 days - 3 per week	36	EA	\$ 150.00	\$ 5,400.00
<b>Estimated Cost .....</b>					<b>\$ 35,605.00</b>

North Carolina Department of Transportation  
Preliminary Estimate

City of Richmond Confederate Monument Location Temporary Treatments  
#3 - Stonewall Jackson Monument

Requested By: Wayne Robinson, PLA - VHB

Date 4/30/2021

Line Item	Description	Quantity	Unit	Price	Amount
1	Mobilization	1	LS	\$ 2,500.00	\$ 2,500.00
2	Maintenance of Traffic	1	LS	\$ 10,000.00	\$ 10,000.00
3	Erosion and Sediment Control/Inlet Protection	1	LS	\$ 5,000.00	\$ 5,000.00
4	Clearing and Grubbing	0	Acres	\$ -	\$ -
5	Supplementary Clearing and Grubbing	0	Acres	\$ -	\$ -
6	Unclassified Excavation	80	CY	\$ 32.00	\$ 2,560.00
7	Borrow Excavation	0	CY	\$ 32.00	\$ -
8	Removal of Existing Asphalt Pavement 8"	0	SY	\$ 115.00	\$ -
9	Removal of Existing Concrete 6"	0	SY	\$ 125.00	\$ -
10	Fine Grading	0	SY	\$ 20.00	\$ -
11	Compacted Fill	40	CY	\$ 30.00	\$ 1,200.00
12	Base Rock - compacted	25	CY	\$ 60.00	\$ 1,500.00
13	Asphalt - City DPW Standard	121	SY	\$ 110.00	\$ 13,310.00

**Estimated Cost** ..... \$ 36,070.00

North Carolina Department of Transportation  
Preliminary Estimate

City of Richmond Confederate Monument Location Temporary Treatments  
#4 - Jefferson Davis Monument

Requested By: Wayne Robinson, PLA - VHB

Date

4/30/2021

Line Item	Description	Quantity	Unit	Price	Amount
1	Mobilization	1	LS	\$ 2,500.00	\$ 2,500.00
2	Maintenance of Traffic	1	LS	\$ 10,000.00	\$ 10,000.00
3	Erosion and Sediment Control/Inlet Protection	1	LS	\$ 5,000.00	\$ 5,000.00
4	Clearing and Grubbing	0	Acres	\$ -	\$ -
5	Supplementary Clearing and Grubbing	0	Acres	\$ -	\$ -
6	Unclassified Excavation	94	CY	\$ 32.00	\$ 3,008.00
7	Borrow Excavation	0	CY	\$ 32.00	\$ -
8	Removal of Existing Asphalt Pavement 8"	0	SY	\$ 115.00	\$ -
9	Removal of Existing Concrete 6"	0	SY	\$ 125.00	\$ -
10	Fine Grading	142	SY	\$ 20.00	\$ 2,840.00
11	Compacted Fill	0	CY	\$ 30.00	\$ -
12	Planting Mix	94	CY	\$ 50.00	\$ 4,700.00
13	Soil Prep for Sod/Seed	0	SY	\$ 25.00	\$ -
14	Sod - Fescue	0	SY	\$ 8.00	\$ -
15	Chionanthus virginicus - White Fringetree - 5' Ht., Multi	3	EA	\$ 250.00	\$ 750.00
16	Ilex verticillata - Winterberry - #5	6	EA	\$ 65.00	\$ 390.00
	Hemerocallis spp. - Daylily - #1	135	EA	\$ 12.00	\$ 1,620.00
	Itea virginica 'Henery's Garnet' - Virginia Sweetspire - #3	39	EA	\$ 45.00	\$ 1,755.00
	Rudbeckia fulgida 'Goldstrum' - Blackeyed Susan - 4" Pots	195	EA	\$ 8.00	\$ 1,560.00
15	Mulch	142	SY	\$ 8.00	\$ 1,136.00
16	Watering During Establishment - 90 days - 3 per week	36	EA	\$ 150.00	\$ 5,400.00
<b>Estimated Cost .....</b>					<b>\$ 40,659.00</b>

North Carolina Department of Transportation  
Preliminary Estimate

City of Richmond Confederate Monument Location Temporary Treatments  
#5 - Confederate Cannon #1

Requested By: Wayne Robinson, PLA - VHB

Date

4/30/2021

Line Item	Description	Quantity	Unit	Price	Amount
1	Mobilization	1	LS	\$ 500.00	\$ 500.00
2	Maintenance of Traffic	1	LS	\$ 1,000.00	\$ 1,000.00
3	Erosion and Sediment Control/Inlet Protection	0	LS	\$ 5,000.00	\$ -
4	Clearing and Grubbing	0	Acres	\$ -	\$ -
5	Supplementary Clearing and Grubbing	0	Acres	\$ -	\$ -
6	Unclassified Excavation	0	CY	\$ 32.00	\$ -
7	Borrow Excavation	0	CY	\$ 32.00	\$ -
8	Removal of Existing Asphalt Pavement 8"	0	SY	\$ 115.00	\$ -
9	Removal of Existing Concrete 6"	0	SY	\$ 125.00	\$ -
10	Fine Grading	0	SY	\$ 20.00	\$ -
11	Compacted Fill	0	CY	\$ 30.00	\$ -
12	Planting Mix	0	CY	\$ 50.00	\$ -
13	Soil Prep for Sod/Seed	4	SY	\$ 25.00	\$ 100.00
14	Sod - Fescue	4	SY	\$ 8.00	\$ 32.00
15	Mulch	0	SY	\$ 8.00	\$ -
16	Watering During Establishment - 60 days - 3 per week	24	EA	\$ 150.00	\$ 3,600.00
				<b>Estimated Cost</b>	\$ 5,232.00

North Carolina Department of Transportation  
Preliminary Estimate

City of Richmond Confederate Monument Location Temporary Treatments  
#6 - J.E.B. Stuart Monument

Requested By: Wayne Robinson, PLA - VHB

Date

4/30/2021

Line Item	Description	Quantity	Unit	Price	Amount
1	Mobilization	1	LS	\$ 2,500.00	\$ 2,500.00
2	Maintenance of Traffic	1	LS	\$ 10,000.00	\$ 10,000.00
3	Erosion and Sediment Control/Inlet Protection	1	LS	\$ 5,000.00	\$ 5,000.00
4	Clearing and Grubbing	0	Acres	\$ -	\$ -
5	Supplementary Clearing and Grubbing	0	Acres	\$ -	\$ -
6	Unclassified Excavation	136	CY	\$ 32.00	\$ 4,352.00
7	Borrow Excavation	0	CY	\$ 32.00	\$ -
8	Removal of Existing Asphalt Pavement 8"	0	SY	\$ 115.00	\$ -
9	Removal of Existing Concrete 6"	0	SY	\$ 125.00	\$ -
10	Fine Grading	207	SY	\$ 20.00	\$ 4,140.00
11	Compacted Fill	0	CY	\$ 30.00	\$ -
12	Planting Mix	136	CY	\$ 50.00	\$ 6,800.00
13	Soil Prep for Sod/Seed	0	SY	\$ 25.00	\$ -
14	Sod - Fescue	0	SY	\$ 8.00	\$ -
15	Rhus typhina - Staghorn Sumac - 5' Ht., Multi	3	EA	\$ 250.00	\$ 750.00
16	Ilex verticillata - Winterberry - #5	8	EA	\$ 65.00	\$ 520.00
	Hemerocallis spp. - Daylily - #1	400	EA	\$ 12.00	\$ 4,800.00
	Itea virginica 'Henery's Garnet' - Virginia Sweetspire - #3	42	EA	\$ 45.00	\$ 1,890.00
15	Mulch	207	SY	\$ 8.00	\$ 1,656.00
16	Watering During Establishment - 90 days - 3 per week	36	EA	\$ 150.00	\$ 5,400.00
<b>Estimated Cost .....</b>					<b>\$ 47,808.00</b>



North Carolina Department of Transportation  
Preliminary Estimate

City of Richmond Confederate Monument Location Temporary Treatments  
#7 - Confederate Soldiers and Sailors Monument

Requested By: Wayne Robinson, PLA - VHB

Date

4/30/2021

Line Item	Description	Quantity	Unit	Price	Amount
1	Mobilization	1	LS	\$ 2,500.00	\$ 2,500.00
2	Maintenance of Traffic	1	LS	\$ 5,000.00	\$ 5,000.00
3	Erosion and Sediment Control/Inlet Protection	1	LS	\$ 5,000.00	\$ 5,000.00
4	Clearing and Grubbing	0	Acres	\$ -	\$ -
5	Supplementary Clearing and Grubbing	0	Acres	\$ -	\$ -
6	Unclassified Excavation	58	CY	\$ 32.00	\$ 1,856.00
7	Borrow Excavation	0	CY	\$ 32.00	\$ -
8	Removal of Existing Asphalt Pavement 8"	0	SY	\$ 115.00	\$ -
9	Removal of Existing Concrete 6"	0	SY	\$ 125.00	\$ -
10	Fine Grading	0	SY	\$ 20.00	\$ -
11	Compacted Fill	30	CY	\$ 30.00	\$ 900.00
12	Base Rock - compacted	20	CY	\$ 60.00	\$ 1,200.00
13	Cobblestone Installation - from DPW inventory	88	SY	\$ 200.00	\$ 17,600.00

**Estimated Cost** ..... \$ 34,056.00