



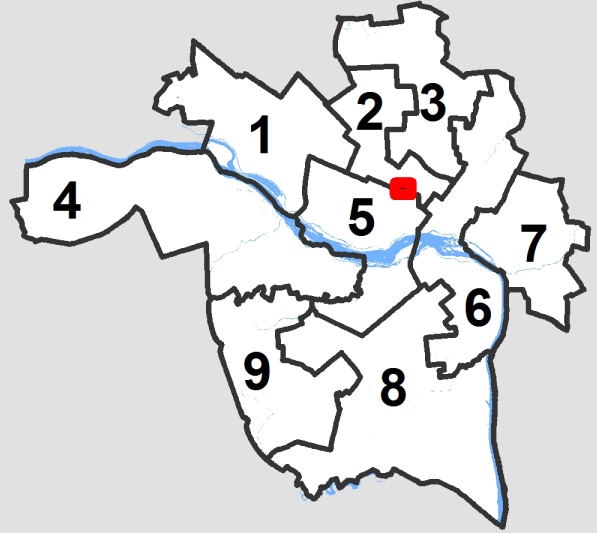
**City of Richmond
Department of Planning
& Development Review**

Encroachment

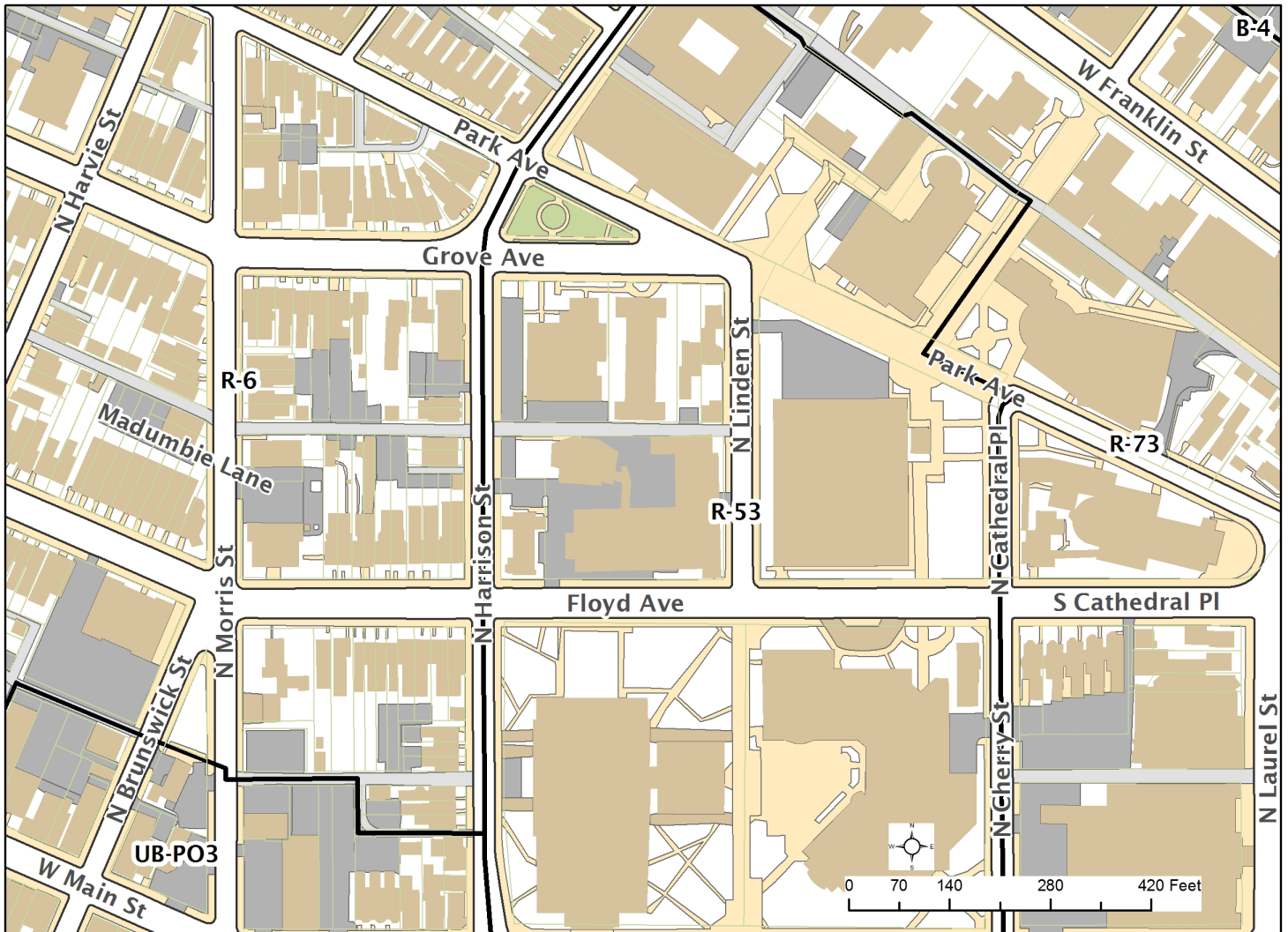
LOCATION: Linden St between Floyd & Grove Ave

COUNCIL DISTRICT: 2

PROPOSAL: Streetscape encroachments as part of a narrowing of Linden Street



For questions, please contact Kathleen Onufer at 646-5207 or Kathleen.Onufer@richmondgov.com

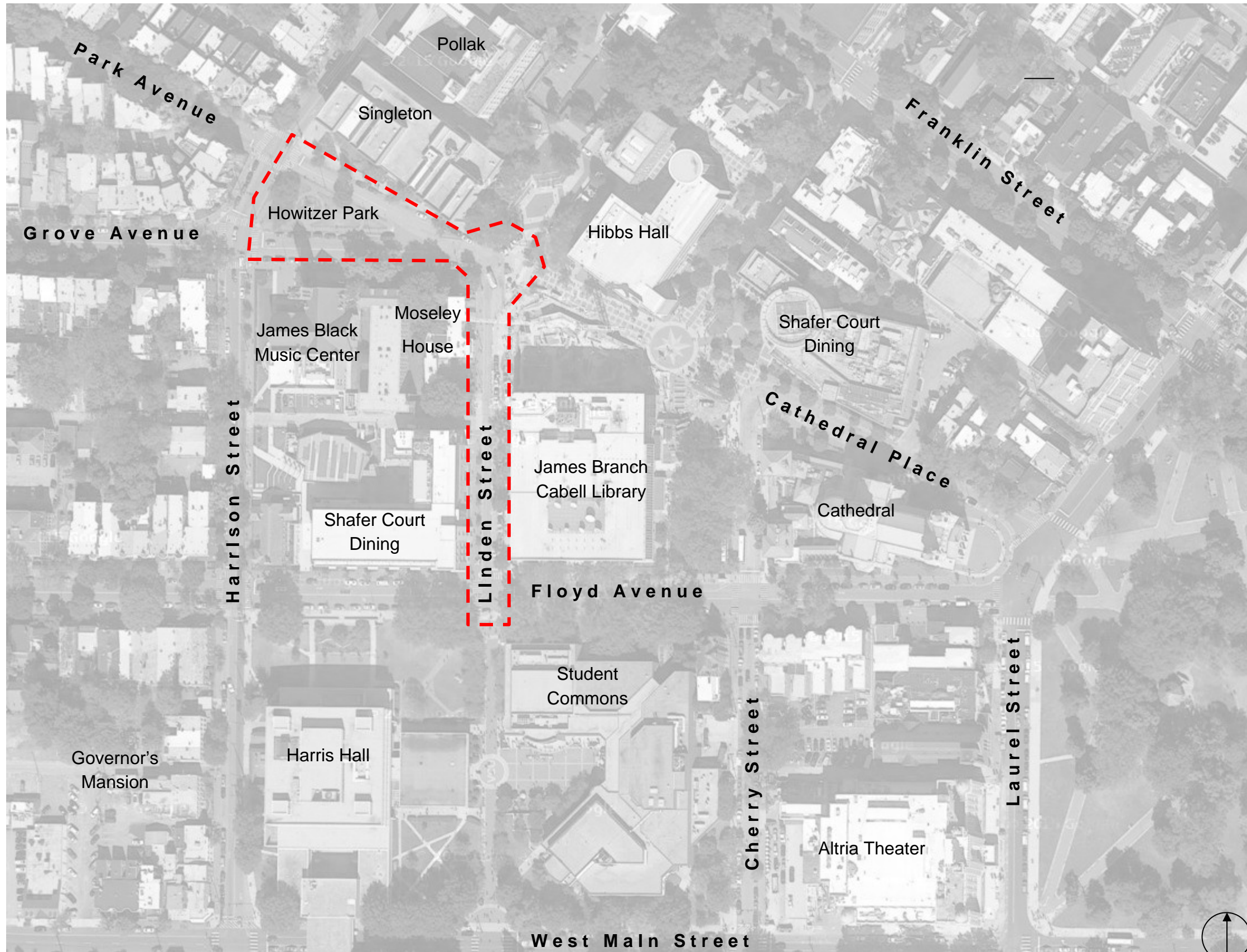




City of Richmond
Urban Design
Committee Submittal
May 19, 2016

Linden Street
Pedestrian Commons

Monroe Park Campus
Virginia Commonwealth University
Richmond, Virginia

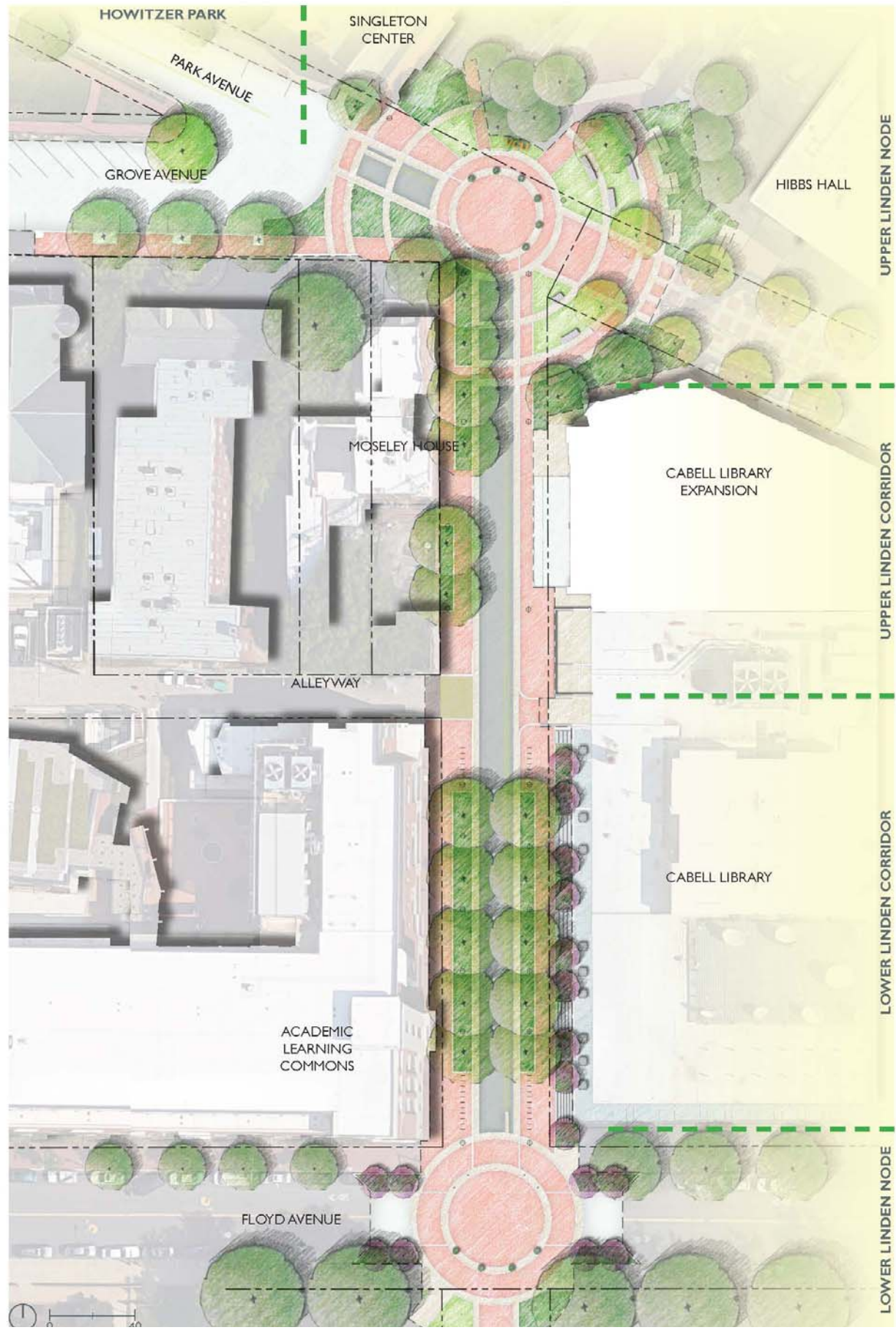


VCU is proposing streetscape improvements along Linden Street between Floyd Avenue and Grove Avenue.

This project proposed to remove the short term parking along Linden and to add parking around Howitzer Park resulting in no net loss of Fan District Zone 1 spaces. Traffic will remain one way southbound on Linden and two way traffic on park Avenue between Harrison and Linden. Traffic on Grove between Harrison and Linden will become one way east bound with angled back in parking along Howitzer Park. A contra flow bike lane is proposed for Linden. The existing street width from curb to curb is 30 feet. The new curb to curb width will be 21 feet.

A raised brick paver speed table is proposed at the intersection of Linden and Floyd to help slow traffic consistent with the city's Bike Boulevard improvements.

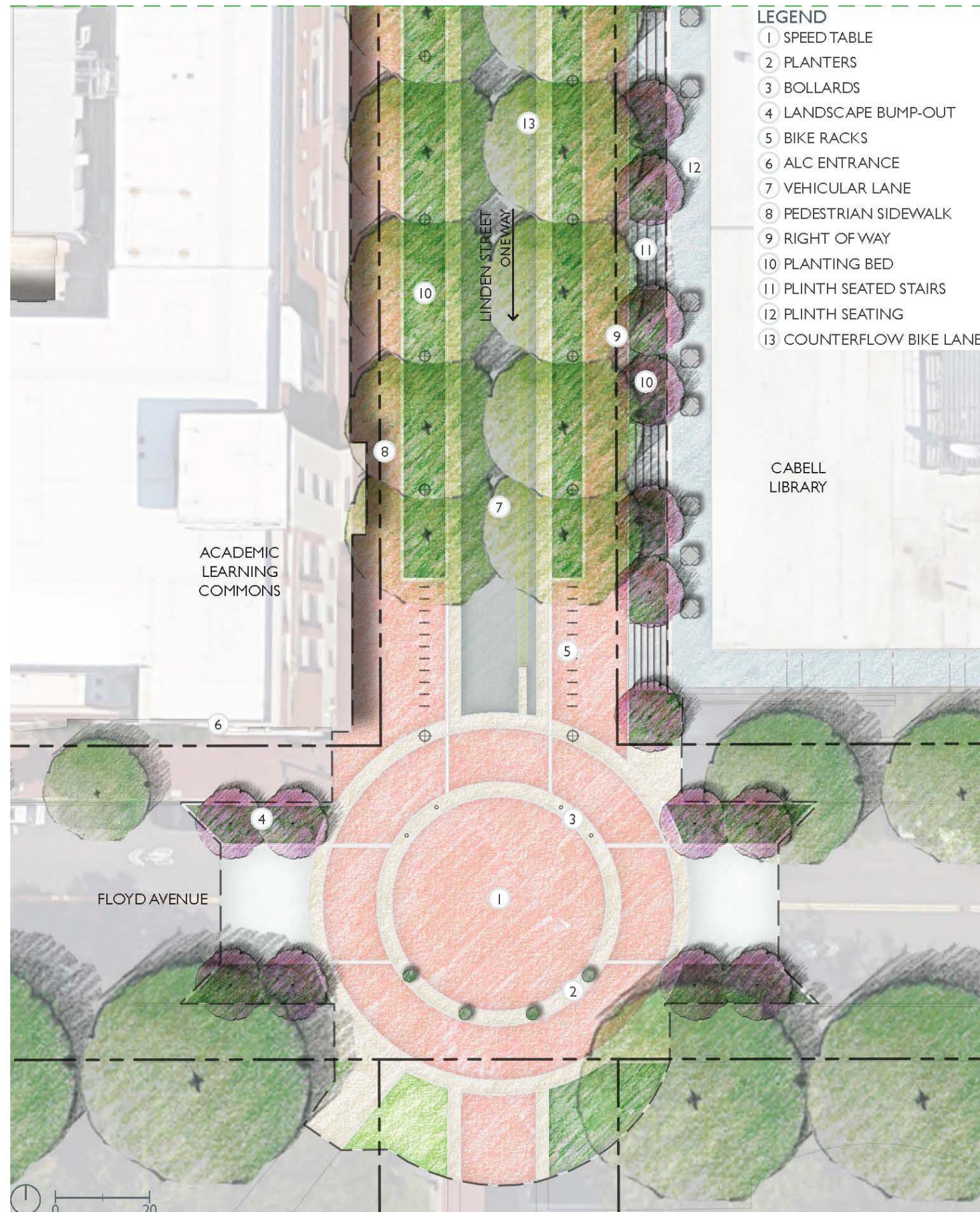
New lighting will consist of the VCU standard ornamental fixture using LED as the light source. Three existing cobra head lights on wooden poles will be removed as part of the project.



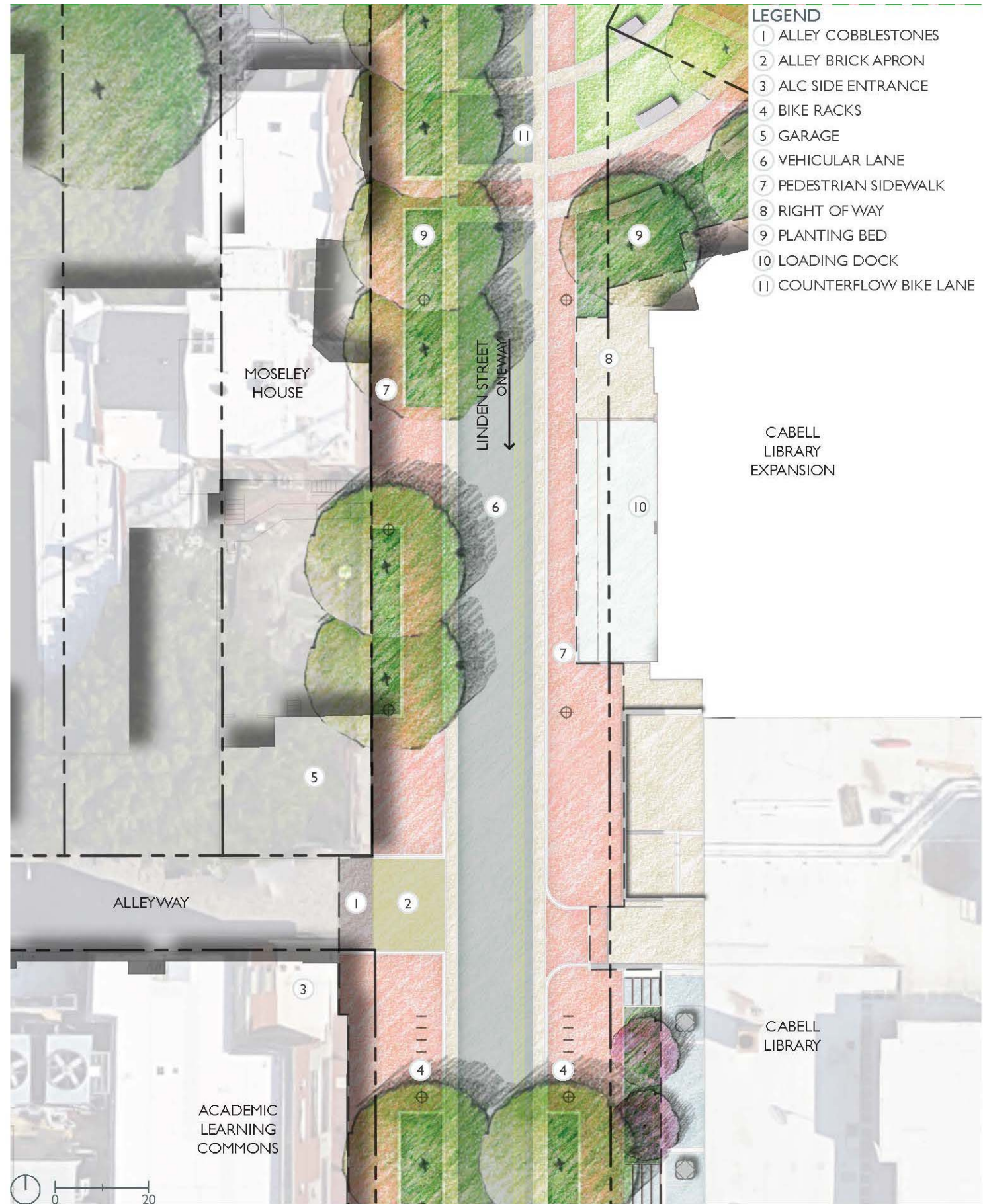
Rendering

Linden Street Pedestrian Commons

May 19, 2016



Detail Rendering - Lower Linden
 Linden Street Pedestrian Commons
 May 19, 2016



Detail Rendering - Upper Linden Corridor

Linden Street Pedestrian Commons

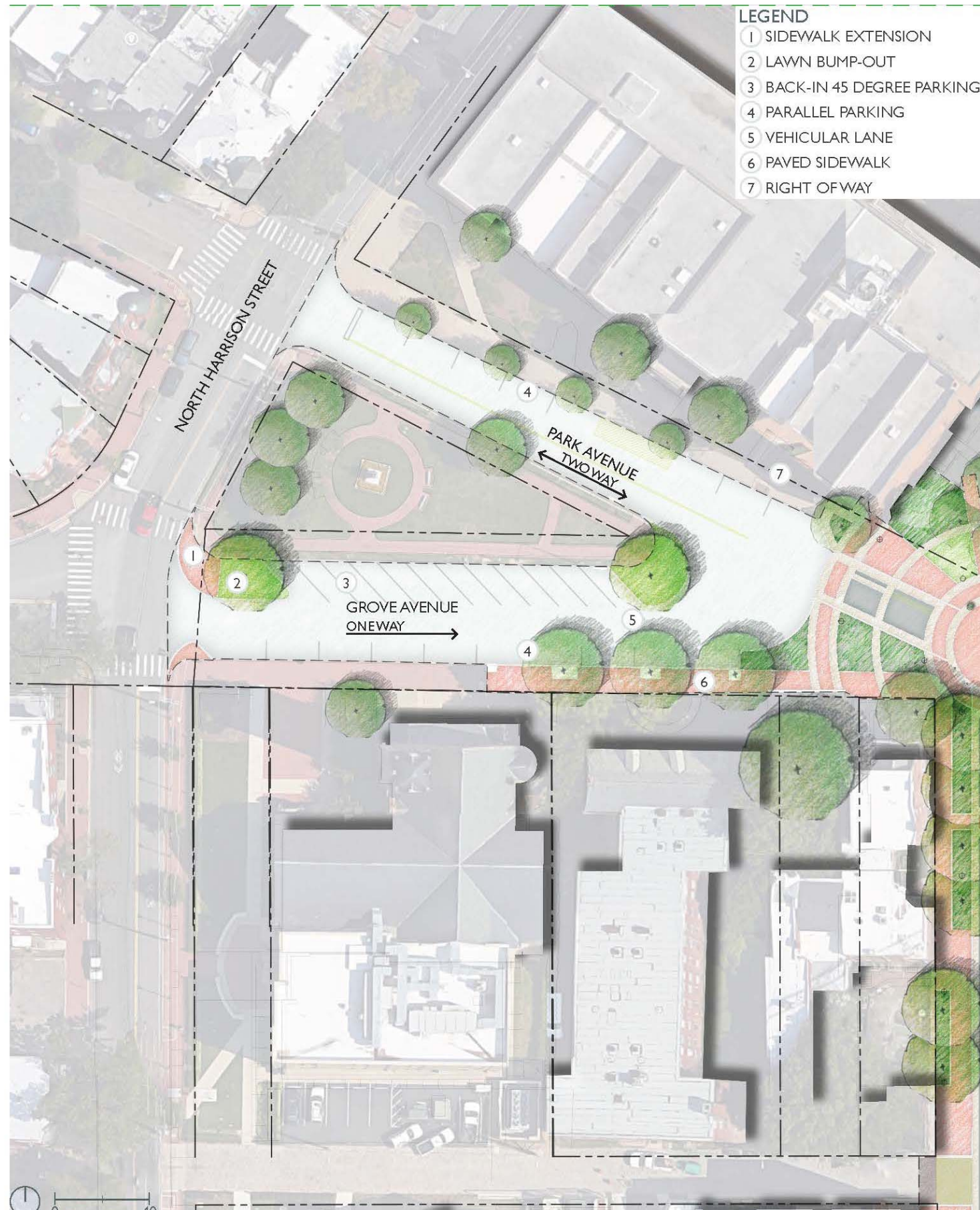
May 19, 2016



Detail Rendering - Upper Linden Node

Linden Street Pedestrian Commons

May 19, 2016



Detail Rendering - Howitzer Park
 Linden Street Pedestrian Commons
 May 19, 2016

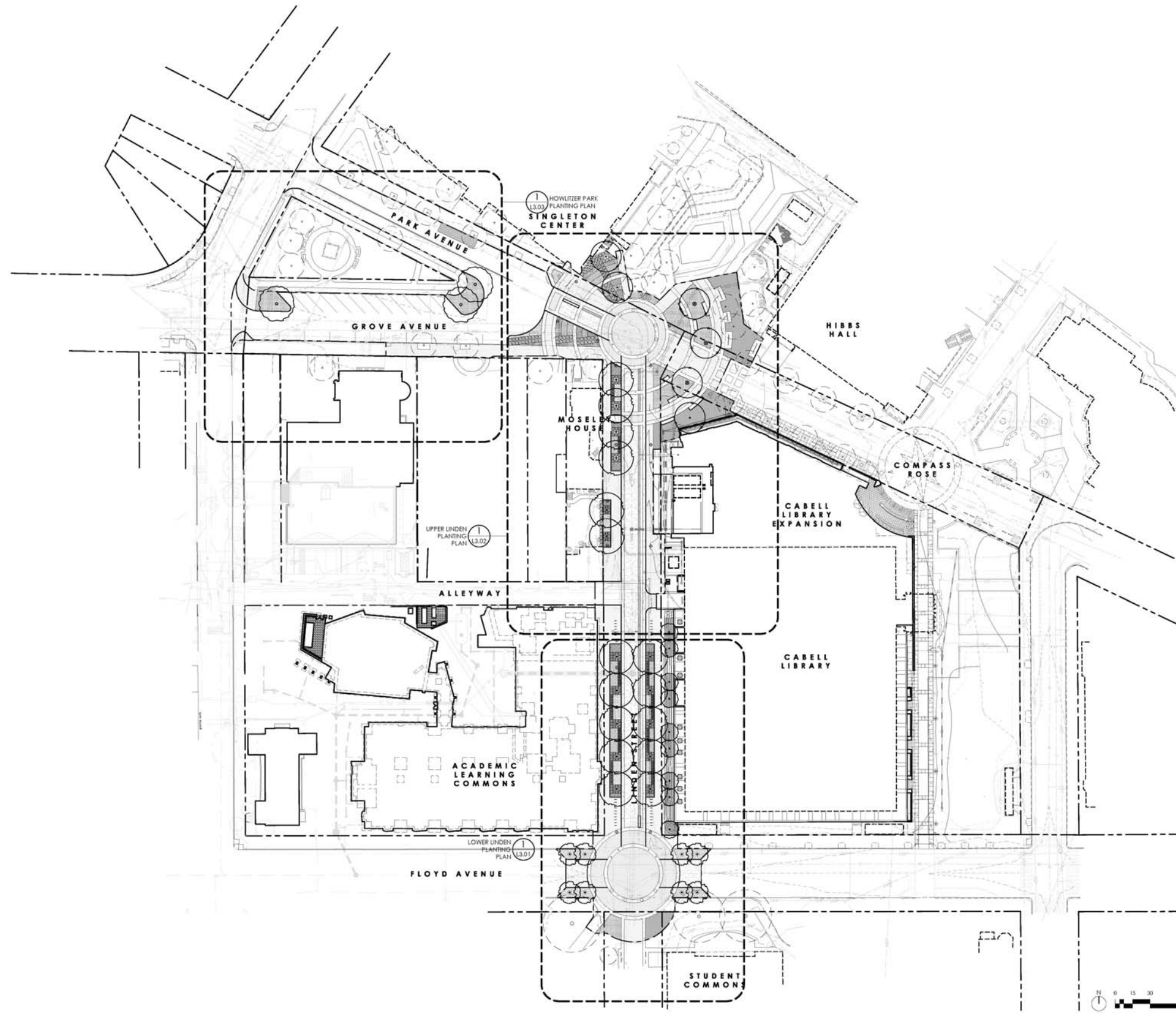


professional seal

F. PRICE
project manager

M. KEARNEY
project team

CIVIL ENGINEER
DRAPER ADEN ASSOCIATES
8090 VILLA PARK DRIVE
RICHMOND, VA 23228
T 804.264.2228 F 804.264.8773



LINDEN STREET
PEDESTRIAN
COMMONS
project name
VIRGINIA COMMONWEALTH
UNIVERSITY
client
100 BLOCK OF LINDEN STREET
MONROE PARK CAMPUS
project address

1435.00
drawing number

UDC SUBMISSION
project phase

MAY 19, 2016
issue date

revisions

OVERALL PLANTING
PLAN
sheet title

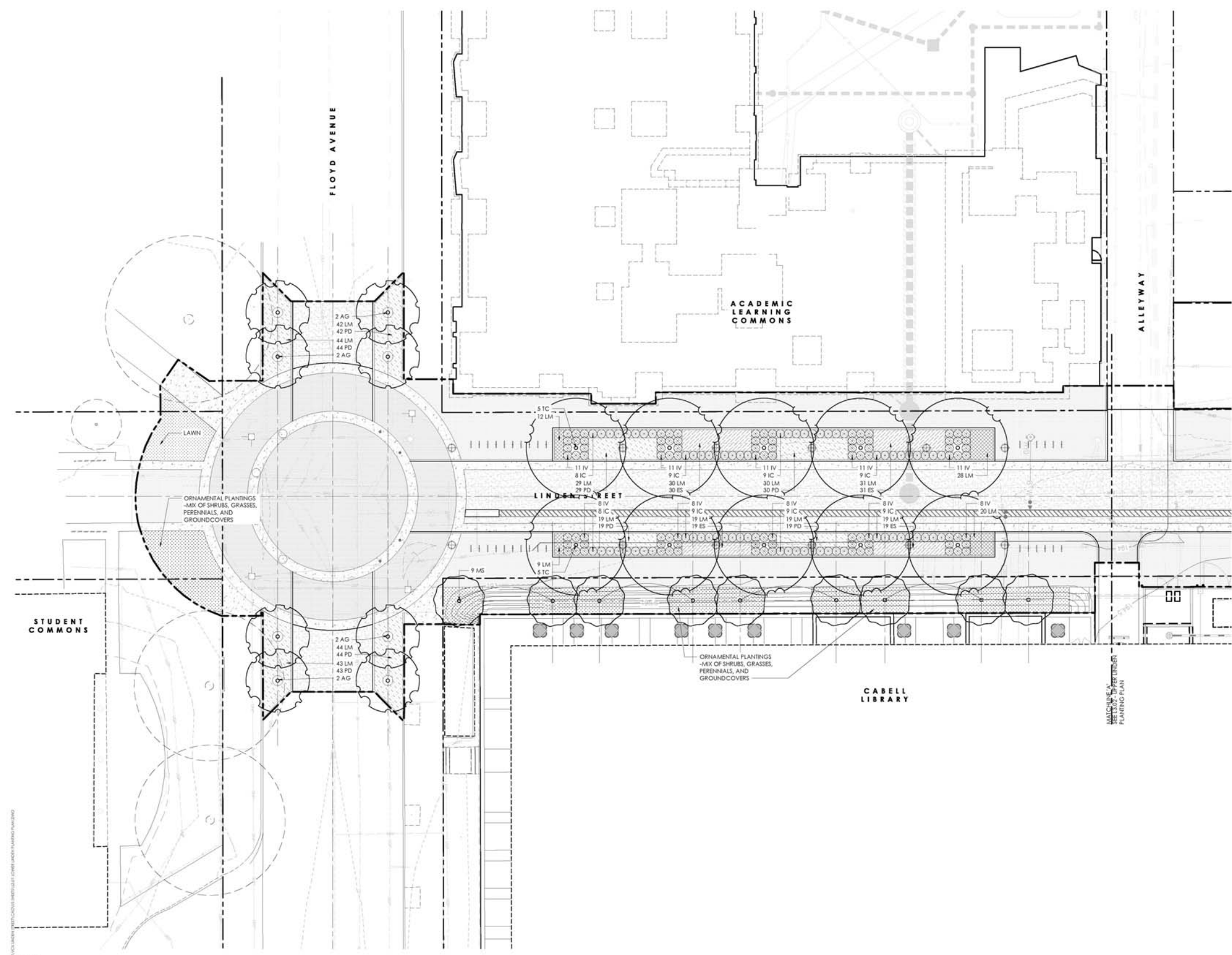


L3.00
sheet number

DATE PLOTTED: 05/19/2016 10:00 AM. PLOTTER: HP DesignJet T1100PS. PLOTTING ENGINE: HP DesignJet T1100PS. PLOTTING LANGUAGE: HP-GL/PS. PLOTTING MODE: PLOT. PLOTTING SCALE: 1.00. PLOTTING SHEET: 1 OF 3. PLOTTING STATUS: SUCCESSFUL. PLOTTING TIME: 00:01:00. PLOTTING USER: MPRICE.



professional seal
F. PRICE
project manager
M. KEARNEY
project team
CIVIL ENGINEER
DRAPER ADEN ASSOCIATES
8090 VILLA PARK DRIVE
RICHMOND, VA 23228
T 804.264.2226 F 804.264.8773



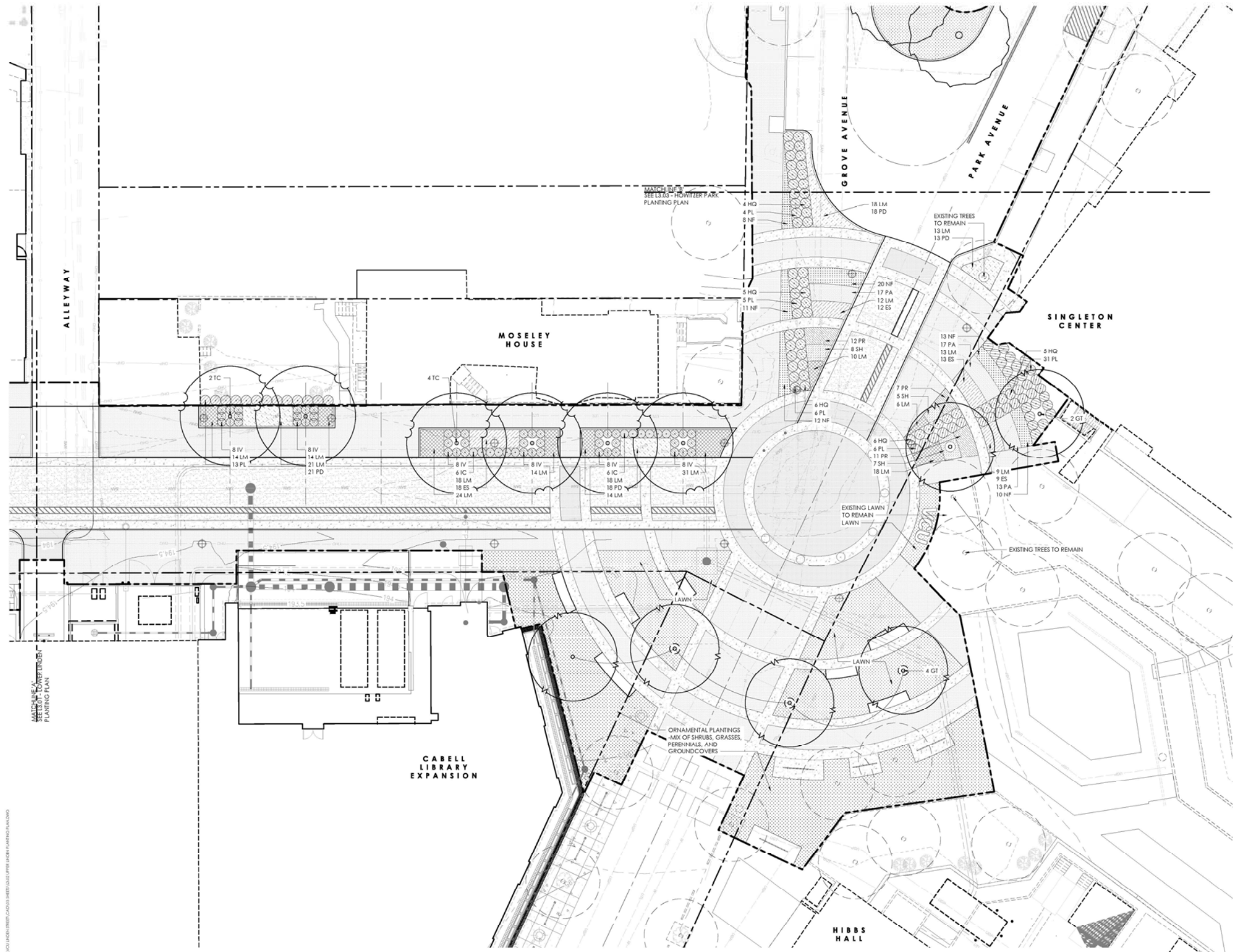
LINDEN STREET PEDESTRIAN COMMONS
project name
VIRGINIA COMMONWEALTH UNIVERSITY
client
100 BLOCK OF LINDEN STREET
MONROE PARK CAMPUS
project address
1435.00
project number
UDC SUBMISSION
project phase
MAY 19, 2016
issue date

LOWER LINDEN
PLANTING PLAN
sheet title

1
13.00
LOWER LINDEN PLANTING PLAN
SCALE: 1/10



L3.01
sheet number



ALL PROJECTS ON LINDEN STREET CROSS STREET QUALITY IMPROVEMENT PLAN
 ALL PROJECTS ON LINDEN STREET CROSS STREET QUALITY IMPROVEMENT PLAN

waterstreetstudio
 landscape architecture | civil engineering
 411 E. Main Street | 604.264.8773 | Charlottesville, VA 22902



professional seal
 P. PRICE
 project manager
 M. KEARNEY
 project team
 CIVIL ENGINEER
 DRAPER ADEN ASSOCIATES
 8090 VILLA PARK DRIVE
 RICHMOND, VA 23228
 T. 804.264.2226 F. 804.264.8773



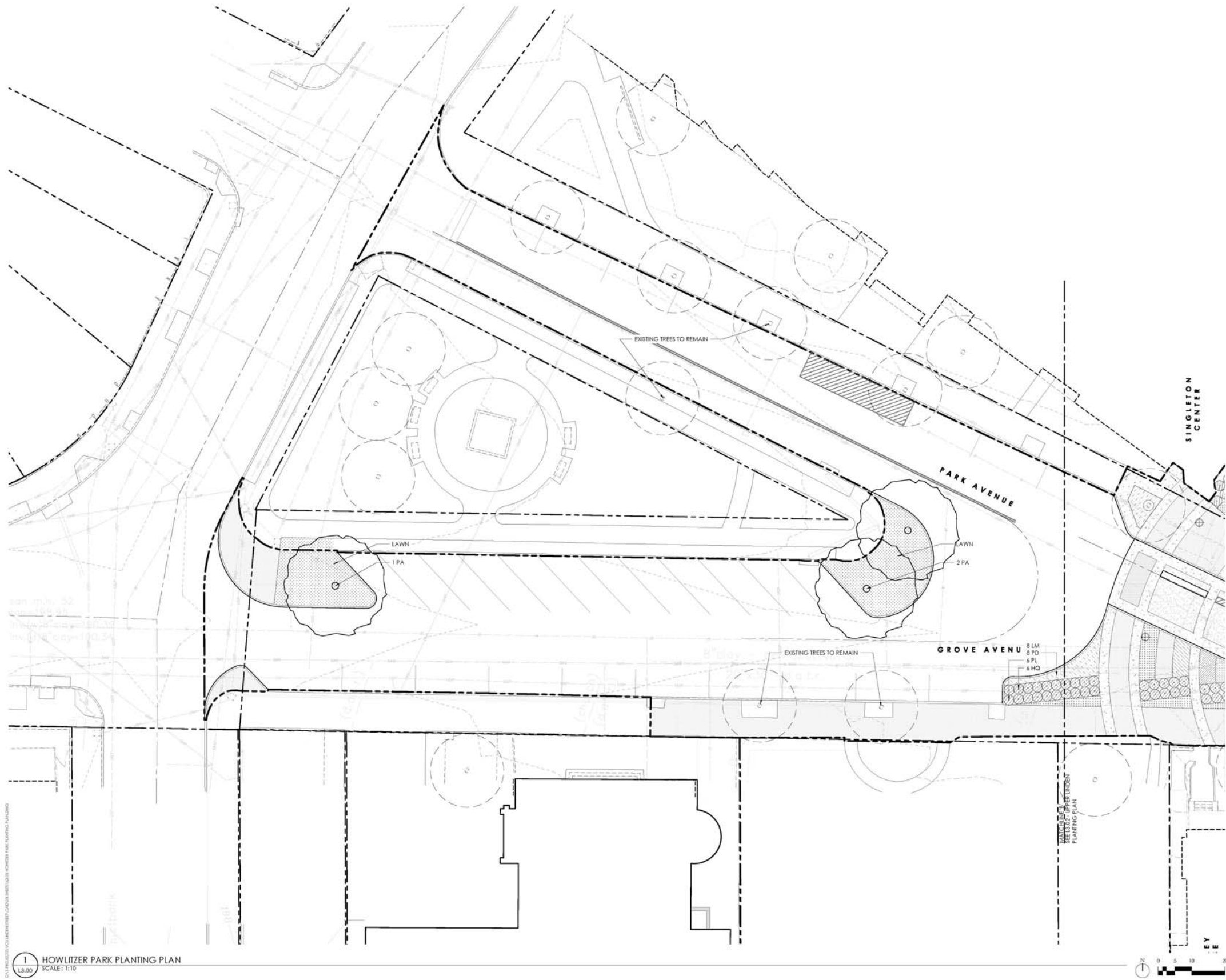
LINDEN STREET
 PEDESTRIAN
 COMMONS
 project name
 VIRGINIA COMMONWEALTH
 UNIVERSITY
 client
 100 BLOCK OF LINDEN STREET
 MONROE PARK CAMPUS
 project address
 1435.00
 project number
 UDC SUBMISSION
 project phase
 MAY 19, 2016
 issue date

UPPER LINDEN
 PLANTING PLAN



L3.02
 sheet number





1
13.00
HOWITZER PARK PLANTING PLAN
SCALE: 1:10

waterstreetstudio
landscape architecture | civil engineering
411 E Main Street | 434.791.8107 | Charlottesville, VA 22901



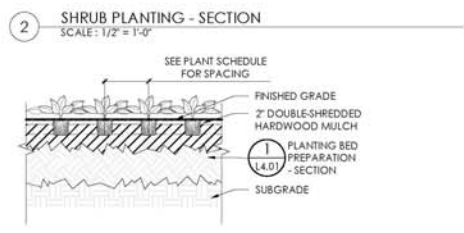
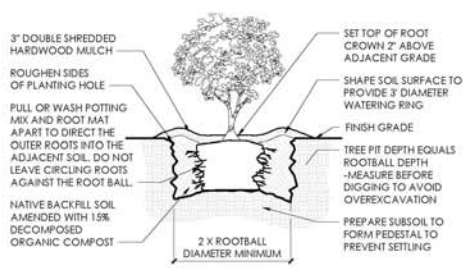
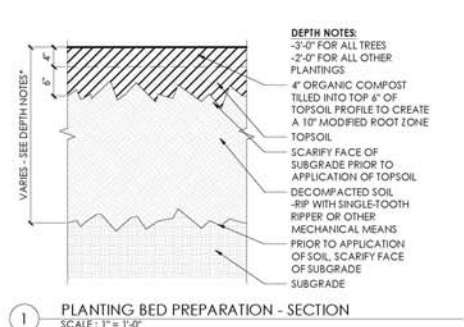
professional seal
F. PRICE
project manager
M. KEARNEY
project team
CIVIL ENGINEER
DRAPER ADEN ASSOCIATES
8090 VILLA PARK DRIVE
RICHMOND, VA 23228
T 804.264.2228 F 804.264.8773



LINDEN STREET
PEDESTRIAN
COMMONS
project name
VIRGINIA COMMONWEALTH
UNIVERSITY
client
100 BLOCK OF LINDEN STREET
MONROE PARK CAMPUS
project address
1435.00
project number
UDC SUBMISSION
project phase
MAY 19, 2016
issue date

HOWITZER PARK
PLANTING PLAN
sheet title

L3.03
sheet number



PLANTING NOTES

- CONTRACTOR SHALL VERIFY PLANT MATERIAL QUANTITIES SOWN ON PLAN WITH TOTALS IN PLANTING SCHEDULE. NOTIFY LANDSCAPE ARCHITECT OF ANY DISCREPANCIES PRIOR TO FINAL BIDDING. UNITS PRICES BE SUBMITTED AS PART OF FINAL BID.
- ALL PLANT MATERIAL SHALL BE GUARANTEED FOR ONE (1) FULL YEAR AND SHALL BE IN A HEALTHY GROWING CONDITION. PLANT MATERIALS WHICH DO NOT FULFILL THIS GUARANTEE SHALL BE REPLACED AT NO COST TO THE OWNER. REPLACEMENT SHALL BE GUARANTEED THROUGHOUT THE ORIGINAL GUARANTEE PERIOD. PLANTS THAT DIE SHALL BE REPLACED IMMEDIATELY.
- CONTRACTOR IS RESPONSIBLE FOR WATERING, WEEDING, PEST CONTROL, AND FERTILIZATION OF ALL PLANT MATERIAL UNTIL: a.) UPON FINAL ACCEPTANCE IS ISSUED BY LANDSCAPE ARCHITECT AND/OR OWNER, AND b.) THE CONTRACTOR PROVIDES OWNER WRITTEN NOTIFICATION OF ALL MAINTENANCE NEEDS OF ALL SCOPE ASSOCIATED WITH THE PLANTING PLAN(S) CONTRACT DOCUMENTS. CONTRACTOR SHALL NOT ASSUME IRRIGATION SYSTEM IS FULLY OPERATIONAL AT THE COMPLETION OF THE PLANTING INSTALLATION.
- CONTRACTOR IS RESPONSIBLE FOR CONTACTING MISS UTILITY PRIOR TO THE BEGINNING OF CONSTRUCTION FOR LOCATION OF ALL UTILITY LINES. TREES SHALL BE LOCATED A MINIMUM OF FIVE (5) FEET FROM SEWER/WATER CONNECTIONS. NOTIFY LANDSCAPE ARCHITECT OF CONFLICTS.
- THE LANDSCAPE ARCHITECT IS THE OWNER'S REPRESENTATIVE AND SHALL BE THE APPROVING AUTHORITY FOR INFORMATION PROVIDED WITHIN THESE PLANS AND SPECIFICATIONS.
- ALL PLANT MATERIALS, TOPSOIL, MULCH, FERTILIZERS, SOIL AMENDMENTS, PLANTING SUPPLIES, AND METHODS SHALL BE SUBJECT TO LANDSCAPE ARCHITECTS APPROVAL. REJECTED MATERIALS SHALL BE REMOVED FROM THE SITE WITHOUT DELAY AT NO EXPENSE TO THE OWNER.
- CONTRACTOR SHALL LAYOUT AND MARK LOCATION FOR ALL PLANT MATERIAL, AND IMPROVEMENTS SHOWN AND SHALL REQUEST IN FIELD APPROVAL FROM LANDSCAPE ARCHITECT.
- ALL PLANT MATERIALS AND PLANTING METHODS SHALL CONFORM TO A.A.N. STANDARDS.
- BEDS TO CONTAIN SHRUBS, PERENNIALS, ORNAMENTAL GRASSES, OR PERENNIALS SHALL BE FILLED TO A DEPTH OF 12" AND THE SOIL CONDITIONED BY ADDING 3" OF A U.S. COMPOSTING COUNCIL APPROVED COMPOST.
- ALL PLANTING BED AREAS SHALL BE COVERED WITH A 3" MINIMUM LAYER OF MEDIUM TEXTURED SHREDDED HARDWOOD MULCH UNLESS OTHERWISE NOTED.
- ALL SUBSTITUTIONS OF PLANT MATERIAL SHALL BE REQUESTED IN WRITING TO THE LANDSCAPE ARCHITECT AND APPROVED IN WRITING BY THE OWNER OR THE OWNER'S REPRESENTATIVE.
- ALL PLANTING OPERATIONS SHALL BE UNDER THE SUPERVISION OF AN EXPERIENCED PLANTSMAN.
- LANDSCAPE ARCHITECT RESERVES THE RIGHT TO SELECT PLANT MATERIALS IN THE NURSERY.
- FOR TREES BALLED IN WIRE BASKETS, CUT AND REMOVE TOP AND SIDES OF BASKET AFTER INSTALLATION.
- LANDSCAPE ARCHITECT RESERVES THE RIGHT TO REJECT AND PLANTS AND MATERIALS THAT ARE IN AN UNHEALTHY OR UNSIGHTLY CONDITION, AS WELL AS PLANTS AND MATERIALS THAT DO NOT CONFORM TO A.A.N. STANDARDS.
- SOIL SHALL BE FREE OR ALL WEEDS AND ROCKS GREATER THAN 1" IN DIAMETER.
- PLANT SIZES, QUANTITIES, AND SPECIES WILL BE CHECKED BY MUNICIPALITY INSPECTION FOR COMPLIANCE WITH PLANT SCHEDULE AS APPROVED BY THE MUNICIPALITY. CONTRACTOR SHALL BE HELD RESPONSIBLE FOR DELAY IN ISSUANCE OF CERTIFICATE OF OCCUPANCY BY THE MUNICIPALITY RESULTING FROM UNAUTHORIZED SUBSTITUTIONS OR DOWNSIZING.
- UPON COMPLETION OF LANDSCAPE INSTALLATION, THE LANDSCAPE CONTRACTOR SHALL NOTIFY THE GENERAL CONTRACTOR WHO WILL VERIFY COMPLETENESS, INCLUDING THE REPLACEMENT OF ALL DEAD PLANT MATERIAL, AND SCHEDULE A FINAL INSPECTION FOR ACCEPTANCE BY OWNER.
- CONTRACTOR SHALL REMOVE TREE STAKING AT THE END OF THE ONE YEAR WARRANTY PERIOD.

PLANT SCHEDULE

QTY.	SYM/SOL	Scientific Name	Common Name	Size	Spacing	Root	Notes
TREES							
8	AG	Amelanchier x grandiflora 'Autumn Brilliance'	Serviceberry	6' Ht.	AS SHOWN	B&S	3-5 stems
4	CF	Gleditsia triacanthos var. inermis 'Shademaster'	Hornless Honeylocust	2 1/2' Cal.	AS SHOWN	B&S	5 branching height, straight leader
9	MS	Magnolia x soulangeana	Saucer Magnolia	6' Ht.	AS SHOWN	B&S	4 branching height, 3-5 stems
3	PA	Platanus x acerifolia	London Planetree	2 1/2' Cal.	AS SHOWN	B&S	5 branching height, straight leader
16	TC	Tilia cordata 'Greenpill'	Little Leaf Linden	2 1/2' Cal.	AS SHOWN	B&S	5 branching height, straight leader
ORNAMENTAL GRASSES & SHRUBS							
136		Ornamental Plantings - Shrubs		24" Ht.	36" O.C.	3 Gal.	
132		Ornamental Plantings - Grasses		18" Ht.	30" O.C.	3 Gal.	
32	HQ	Hydrangea quercifolia 'Pee Wee'	Dwarf Oakleaf Hydrangea	18" Ht.	36" O.C.	3 Gal.	
82	IC	Ilex crenata 'Soft Touch'	Soft Touch Holly	18" Ht.	30" O.C.	3 Gal.	
143	IV	Ilex virginica 'Little Henry'	Little Henry Sweetgale	18" Ht.	30" O.C.	3 Gal.	
21	PL	Prunus laurocerasus 'Otto Luyken'	Otto Luyken Laurel	18" Ht.	36" O.C.	3 Gal.	
GROUNDCOVERS & PERENNIALS							
345		Ornamental Plantings - Perennials		18" O.C.		3 Gal.	
363		Ornamental Plantings - Groundcovers		18" O.C.		3 Gal.	
151	ES	Echibeckia summerina 'Yellow'	Echibeckia summerina Yellow	18" O.C.		3 Gal.	
712	IM	Urtica mucron 'Majestic'	Majestic Urtica	18" O.C.		3 Gal.	
67	NF	Nepeta x faassenii 'Walker's Low'	Walker's Low Catmint	24" O.C.		3 Gal.	
47	PA	Pennisetum oligosperum 'Hameli'	Dwarf Fountain Grass	24" O.C.		1 GAL.	
351	PD	Pendleton digitalis 'Hucker Red'	Redcatnip	18" O.C.		3 Gal.	
30	PR	Perovskia atriplicifolia 'Little Spire'	Russian Sage	24" O.C.		3 Gal.	
22	SH	Scorabolia heterostepis	Prarie Dropseed	24" O.C.		1 GAL.	

waterstreetstudio
 landscape architecture | civil engineering
 411 E Main Street, #1120, Charlottesville, VA 22902



professional seal
 P. PRICE
 project manager
 M. KEARNEY
 project team
 CIVIL ENGINEER
 DRAPER ADEN ASSOCIATES
 8090 VILLA PARK DRIVE
 RICHMOND, VA 23228
 T. 804.264.2228 F. 804.264.8773



LINDEN STREET
 PEDESTRIAN
 COMMONS
 project name
 VIRGINIA COMMONWEALTH
 UNIVERSITY
 client
 100 BLOCK OF LINDEN STREET
 MONROE PARK CAMPUS
 project address
 1435.00
 project number
 UDC SUBMISSION
 project phase
 MAY 19, 2016
 issue date

PLANT SCHEDULE,
 NOTES, & DETAILS
 sheet title

L4.00
 sheet number

PLANT SCHEDULE

QTY.	SYMBOL	Scientific Name	Common Name	Size	Spacing	Root	Notes
TREES							
8	AG	<i>Amelanchier x grandiflora</i> 'Autumn Brilliance'	Serviceberry	8' Ht.	AS SHOWN	B&B	3-5 stems
6	GT	<i>Gleditsia triacanthos</i> var. <i>inermis</i> 'Shademaster'	Thornless Honeylocust	2 1/2" Cal.	AS SHOWN	B&B	5' branching height, straight leader
9	MS	<i>Magnolia x soulangeana</i>	Saucer Magnolia	8' Ht.	AS SHOWN	B&B	4' Branching height, 3-5 stems
3	PA	<i>Platanus x acerifolia</i>	London Planetree	2 1/2" Cal.	AS SHOWN	B&B	5' branching height, straight leader
16	TC	<i>Tilia cordata</i> 'Greenspire'	Little Leaf Linden	2 1/2" Cal.	AS SHOWN	B&B	5' branching height, straight leader
ORNAMENTAL GRASSES & SHRUBS							
136		Ornamental Plantings - Shrubs		24" Ht.	36" O.C.	3 Gal.	
132		Ornamental Plantings - Grasses		18" Ht.	30" O.C.	3 Gal.	
32	HQ	<i>Hydrangea quercifolia</i> 'Pee Wee'	Dwarf Oakleaf Hydrangea	18" Ht.	36" O.C.	3 Gal.	
82	IC	<i>Ilex crenata</i> 'Soft Touch'	Soft Touch Holly	18" Ht.	30" O.C.	3 Gal.	
143	IV	<i>Itea virginica</i> 'Little Henry'	Little Henry Sweetspire	18" Ht.	30" O.C.	3 Gal.	
71	PL	<i>Prunus laurocerasus</i> 'Otto Luyken'	Otto Luyken Laurel	18" Ht.	36" O.C.	3 Gal.	
GROUNDCOVERS & PERENNIALS							
545		Ornamental Plantings - Perennials			18" O.C.	3 QT.	
363		Ornamental Plantings - Groundcovers			18" O.C.	3 QT.	
151	ES	<i>Echibeckia summerina</i> 'Yellow'	Echibeckia Summerina Yellow		18" O.C.	3 QT.	
712	LM	<i>Liriope muscari</i> 'Majestic'	Majestic Lilyturf		18" O.C.	3 QT.	
67	NF	<i>Nepeta x faassenii</i> 'Walker's Low'	Walkers Low Catmint		24" O.C.	3 QT.	
47	PA	<i>Pennisetum alopecuroides</i> 'Hamelin'	Dwarf Fountain Grass		24" O.C.	1 GAL.	
351	PD	<i>Penstemon digitalis</i> 'Husker Red'	Beardtongue		18" O.C.	3 QT.	
30	PR	<i>Perovskia atriplicifolia</i> 'Little Spire'	Russian Sage		24" O.C.	3 QT.	
22	SH	<i>Sporobolus heterolepis</i>	Prairie Dropseed		24" O.C.	1 GAL.	

Plant Schedule - Enlarged

Linden Street Pedestrian Commons

May 19, 2016

BEACON WIND LED
 Max Height: 32.0 ft
 Max Spacing: 12.0 ft

044 010 Rev. of Civil Eng. Standard, 8/2015 Phone: 800.346.4528 Fax: 801.774.0228

DETAILS

1. WIND
 WIND SPEED: 150 mph
 WIND DIRECTION: 0°

2. LIGHTING
 LIGHTING TYPE: 1
 LIGHTING HEIGHT: 32.0 ft
 LIGHTING SPACING: 12.0 ft

3. LIGHTING FIXTURE
 LIGHTING FIXTURE: 1
 LIGHTING FIXTURE HEIGHT: 32.0 ft
 LIGHTING FIXTURE SPACING: 12.0 ft

4. LIGHTING FIXTURE
 LIGHTING FIXTURE: 1
 LIGHTING FIXTURE HEIGHT: 32.0 ft
 LIGHTING FIXTURE SPACING: 12.0 ft

044 010 Rev. of Civil Eng. Standard, 8/2015 Phone: 800.346.4528 Fax: 801.774.0228

BEACON WIND LED
 Max Height: 32.0 ft
 Max Spacing: 12.0 ft

044 010 Rev. of Civil Eng. Standard, 8/2015 Phone: 800.346.4528 Fax: 801.774.0228

DETAILS

1. WIND
 WIND SPEED: 150 mph
 WIND DIRECTION: 0°

2. LIGHTING
 LIGHTING TYPE: 1
 LIGHTING HEIGHT: 32.0 ft
 LIGHTING SPACING: 12.0 ft

3. LIGHTING FIXTURE
 LIGHTING FIXTURE: 1
 LIGHTING FIXTURE HEIGHT: 32.0 ft
 LIGHTING FIXTURE SPACING: 12.0 ft

4. LIGHTING FIXTURE
 LIGHTING FIXTURE: 1
 LIGHTING FIXTURE HEIGHT: 32.0 ft
 LIGHTING FIXTURE SPACING: 12.0 ft

044 010 Rev. of Civil Eng. Standard, 8/2015 Phone: 800.346.4528 Fax: 801.774.0228

BEACON WIND LED
 Max Height: 32.0 ft
 Max Spacing: 12.0 ft

044 010 Rev. of Civil Eng. Standard, 8/2015 Phone: 800.346.4528 Fax: 801.774.0228

DETAILS

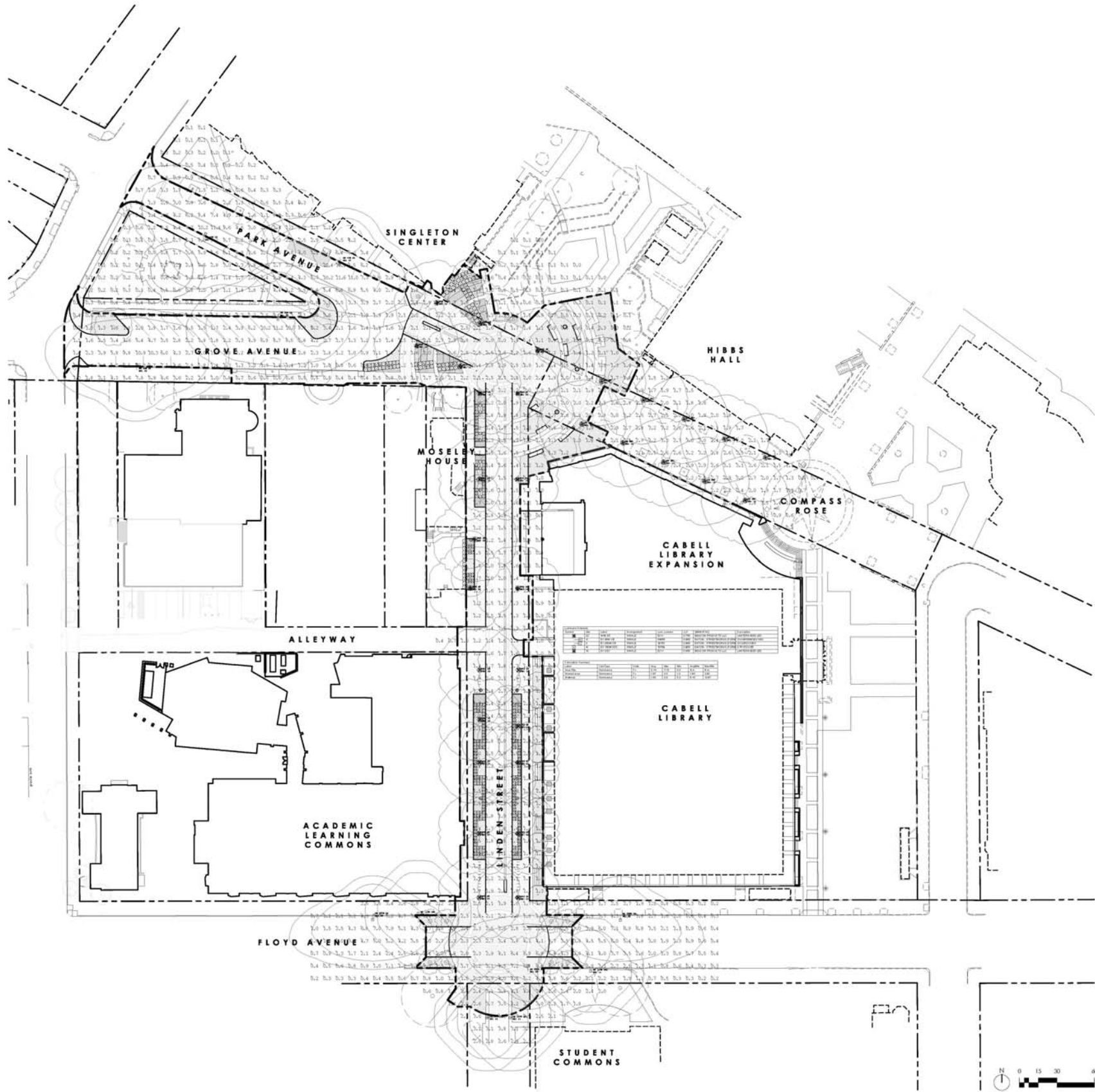
1. WIND
 WIND SPEED: 150 mph
 WIND DIRECTION: 0°

2. LIGHTING
 LIGHTING TYPE: 1
 LIGHTING HEIGHT: 32.0 ft
 LIGHTING SPACING: 12.0 ft

3. LIGHTING FIXTURE
 LIGHTING FIXTURE: 1
 LIGHTING FIXTURE HEIGHT: 32.0 ft
 LIGHTING FIXTURE SPACING: 12.0 ft

4. LIGHTING FIXTURE
 LIGHTING FIXTURE: 1
 LIGHTING FIXTURE HEIGHT: 32.0 ft
 LIGHTING FIXTURE SPACING: 12.0 ft

044 010 Rev. of Civil Eng. Standard, 8/2015 Phone: 800.346.4528 Fax: 801.774.0228



waterstreetstudio
 landscape architecture | civil engineering
 481 Main Street, Charlottesville, VA 22902



professional seal
 P. PRICE
 project manager
 M. KEARNEY
 project team
 CIVIL ENGINEER
 DRAPER ADEN ASSOCIATES
 8090 VILLA PARK DRIVE
 RICHMOND, VA 23228
 T 804.264.2228 F 804.264.8773



LINDEN STREET
 PEDESTRIAN
 COMMONS
 project name
 VIRGINIA COMMONWEALTH
 UNIVERSITY
 client
 100 BLOCK OF LINDEN STREET
 MONROE PARK CAMPUS
 project address
 1435.00
 project number
 UDC SUBMISSION
 project phase
 MAY 19, 2016
 issue date

OVERALL LIGHTING
 PLAN
 sheet title
 L5.00
 sheet number



Benches

STANDARD RIBBON BENCHES

Manufacturer: Victor Stanley
Catalog No.: RB-28 - 6' Length
 w/ center arm
Color: Black

Manufacturer: Timberform Renaissance
Catalog No.: 2806-6 - 6' Bench
 w/ center arm
Color: Black

Manufacturer: Keystone Ridge Designs
Catalog No.: P26C' 6' Pullman w/
 center arm
Color: Black

PEDESTRIAN AREAS

Manufacturer: Pine Hall
Product: Pathway
Size: 4" x 8" x 2 1/4"
Color: Full Range



VEHICULAR AREAS

Manufacturer: Pine Hall
Product: English Edge
Size: 4" x 8" x 2 3/4"
Color: Full Range



CROSSWALK AREAS

Manufacturer: Pine Hall
Product: English Edge
Size: 4" x 8" x 2 3/4"
Color: Full Range



Brick Pavers



S-7 Sand Buff



Planters



Bike Racks

Type: _____
Project Name: _____
Notes: _____

Sample WIN40 AC 24NB-55 5K UNV DIR5 PEC PT SPK BBT
Ordering **WIN40** / **AF** / **36NB-80** / **4K** / **UNV** / **DIR5** / / **PT** / / **BBT**
A B C D E F G H I J

DETAILS

A. MODEL
WIN40 Windsor 40"

B. LENS OPTIONS
AC acrylic, clear
AF acrylic, frosted
AS acrylic, seeded
AW acrylic, white
PC polycarbonate, clear
PF polycarbonate, frosted
NL no lens

C. ENGINE-WATTS
24NB-55 55 Watts - LED array
36NB-80 80 Watts - LED array
48NB-110 110 Watts - LED array
60NB-136 136 Watts - LED array

D. CCT - COLOR TEMP
3K 3000K
4K 4000K
5K 5000K (std.)

E. VOLTAGE
UNV 120-277V
347 347V
480 480V

F. OPTICS
DIR2 type II
DIR3 type III
DIR4 type IV
DIR5 type V

G. ELECTRICAL OPTIONS
PEC photo cell, button

H. MOUNTING OPTIONS
PT post top
PM pendant mount¹

I. STYLE OPTIONS
SPK spikes

J. COLOR
BBT basic black textured
BMT black matte textured
WHT white textured
MBT metallic bronze textured
BZT bronze textured
DBT dark bronze textured
GYS gray smooth
DPS dark platinum smooth
GNT green textured
MST metallic silver textured
MTT metallic titanium textured
OWI old world iron
RAL _____

MOUNTING OPTIONS

¹ consult factory

Type: _____
Project Name: _____
Notes: _____

Sample HOLL S 8 4G OT GF-IU BBT
Ordering **HOLL** / **S** / **14** / **4M** / **TN** / / **BBT**
A B C D E F G

DETAILS

A. MODEL
HOLL Ø4" Holland

B. PROFILE
S smooth
F fluted

C. HEIGHT
6 6'
8 8'
10 10'
12 12'
OTHER **14'**

D. SHAFT
4G Ø4", .125" wall thickness (S) (F)
4M Ø4", .188" wall thickness (S) (F)
4P Ø4", .226" wall thickness (S)

E. POLE TOP
OT open top
ARC arc finial
BAL ball finial
TN tenon
OTHER _____

F. OPTIONS
GF-IU 20AMP GFCI receptacle
OTHER _____

G. COLOR
BBT basic black textured
BMT black matte textured
WHT white textured
MBT metallic bronze textured
BZT bronze textured
DBT dark bronze textured
GYS gray smooth
DPS dark platinum smooth
GNT green textured
MST metallic silver textured
MTT metallic titanium textured
OWI old world iron
RAL _____

Construction: All cast aluminum parts shall be low copper alloy A356. All extruded aluminum parts shall be alloy 6061-T6, 6063-T5 or equal. Standard fluted shaft profile shall be 16-flat flutes for 3"OD and 12-flat flutes for 4", 5", & 6"OD.

Base Covers: require specification of smooth or fluted shafts of the size required to meet wind load requirements

Vibration Dampeners: Vibration dampener pads shall be provided when required by customer or deemed necessary by Beacon Products. Please consult factory for bridge mounted applications.

EPA (effective projected area): EPA is defined as (projected surface area X drag factor) and measured in ft². Allowable post, luminaire arm, luminaire and accessory EPAs are derived from the most current published AASHTO (American Association of State Highway and Transportation Officials) standard, currently AASHTO 2001 (50yr design life). Customer assumes all responsibility for selecting the appropriate post for installation (consult factory for assistance). Luminaire arm, luminaire and accessory EPA must be equal to or less than allowable EPA of post. Consult a professional engineer for compliance with local codes and standards.

Anchor Bolt: Anchor bolts, sized as required, double hex nuts and flat washers shall be hot dipped galvanized steel. A bolt circle template shall be provided for installation.

Fasteners: All fasteners shall be Corrosion Resistant. When tamper resistant fasteners are required, spanner HD (snake eye) style shall be provided (special tool required, available at additional cost).

Finish: Finish shall be a Beacote V polyester powder-coat electrostatically applied and thermocured. Beacote V finish shall consist of a five stage iron phosphate chemical pretreatment regimen with a polymer primer sealer, oven dry off, and top coated with a thermoset super TGIC polyester powder coat finish. The finish shall meet the AAMA 605.2 performance specification which includes passing a 3000 hour salt spray test for cohesion resistance and resists cracking or loss of adhesion per ASTM D522 and resists surface impacts of up to 160 inch-pound.

Limited Warranty: Beacon Products warrants its products, to the original purchaser, against defects in materials and workmanship for proper usage for a period of 5 years after date of production, when properly installed, maintained and appropriately specified. See Warranty Information on www.beaconproducts.com for complete details and exclusions.

CAUTION: Consult factory for structural approval prior to ordering poles. Warranty void if pole is cut, welded, drilled or otherwise modified outside Beacon factory.

Due to our continued efforts to improve our products, product specifications are subject to change without notice.

available EPA index

catalog #	wall thickness	nominal height	AASHTO 2001 wind zones (mph)						
			90	100	110	120	130	140	150
HOLL/S/10/4G	.125"	10'	7.3	5.5	4.3	3.3	2.8	2.3	1.9
HOLL/S/12/4G	.125"	12'	5.5	4.0	3.0	2.2	1.8	1.4	1.2
HOLL/S/14/4M	.188"	14'	6.6	5.0	3.7	2.9	2.3	1.9	1.6
HOLL/S/14/4P	.226"	14'	7.4	5.6	4.3	3.3	2.7	2.3	1.9
HOLL/S/16/4M	.188"	16'	5.1	3.6	2.6	1.8	1.5	1.1	0.9
HOLL/S/16/4P	.226"	16'	5.8	4.2	3.1	1.2	0.0	0.0	0.0
HOLL/S/18/4P	.226"	18'	4.3	3.0	2.0	1.3	1.0	0.7	0.5
HOLL/F/10/4G	.125"	10'	6.3	4.8	3.6	2.7	2.0	1.5	1.0
HOLL/F/12/4M	.188"	12'	6.5	4.9	3.7	2.8	2.0	1.6	1.1
HOLL/F/14/4M	.188"	14'	4.9	3.5	2.5	1.7	1.1	0.7	0.3
HOLL/F/16/4M	.188"	16'	3.5	2.3	1.5	0.8	0.3	0.0	0.0



Rendering - Looking South from Singleton

Linden Street Pedestrian Commons

May 19, 2016



Rendering - Looking North from Floyd

Linden Street Pedestrian Commons

May 19, 2016



Application for URBAN DESIGN COMMITTEE Review

Department of Planning and Development Review
Planning & Preservation Division
900 E. Broad Street, Room 510
Richmond, Virginia 23219
(804) 646-6335

<http://www.richmondgov.com/CommitteeUrbanDesign>

Application Type

- Addition/Alteration to Existing Structure
 New Construction
 Streetscape
 Site Amenity

- Encroachment
 Master Plan
 Sign
 Other

Review Type

- Conceptual
 Final

Project Name: VCU Linden Street Pedestrian Commons

Project Address: Linden Street between Floyd Avenue and Grove Avenue

Brief Project Description (this is not a replacement for the required detailed narrative) : _____

Streetscape project to include wider sidewalks, street trees, ornamental lighting, cross walks and brick paving.

Street will remain one way traffic south bound.

Applicant Information

(on all applications other than encroachments, a City agency representative must be the applicant)

Name: Keith Van Inwegen Email: kvaninwegen@vcu.edu

City Agency: n/a Phone: 804-828-1204

Address: VCU Planning & Design, P.O. Box 843049, Richmond, Virginia 23284-3049

Main Contact (if different from Applicant): _____

Company: _____ Phone: _____

Email: _____

Submittal Deadlines

All applications and support materials must be filed no later than 21 days prior to the scheduled meeting of the Urban Design Committee (UDC). Please see the schedule on page 3 as actual deadlines are adjusted due to City holidays. **Late or incomplete submissions will be deferred to the next meeting.**

Filing

Applications can be mailed or delivered to the attention of "Urban Design Committee" at the address listed at the top of this page. **It is important that the applicant discuss the proposal with appropriate City agencies, Zoning Administration staff, and area civic associations and residents prior to filing the application with the UDC.**

UDC Background

The UDC is a ten member committee created by City Council in 1968 whose purpose is to advise the City Planning Commission on the design of projects on City property or right-of-way. The UDC provides advice of an aesthetic nature in connection with the performance of the duties of the Commission under Sections 17.05, 17.06 and 17.07 of the City Charter. The UDC also advises the Department of Public Works in regards to private encroachments in the public right-of-way.