



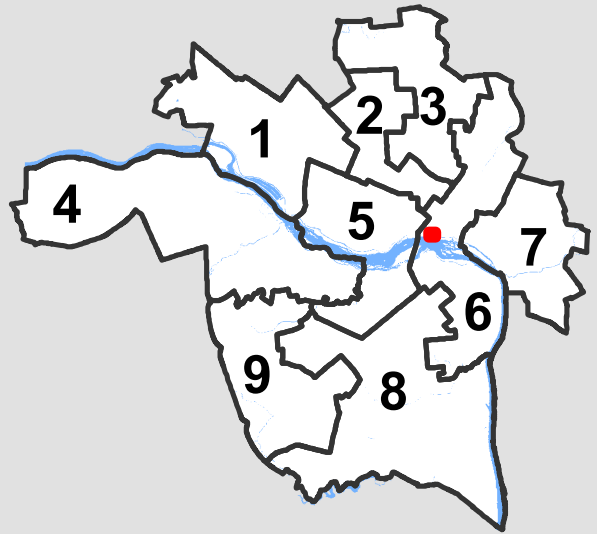
# City of Richmond Department of Planning & Development Review

## Location, Character, and Extent

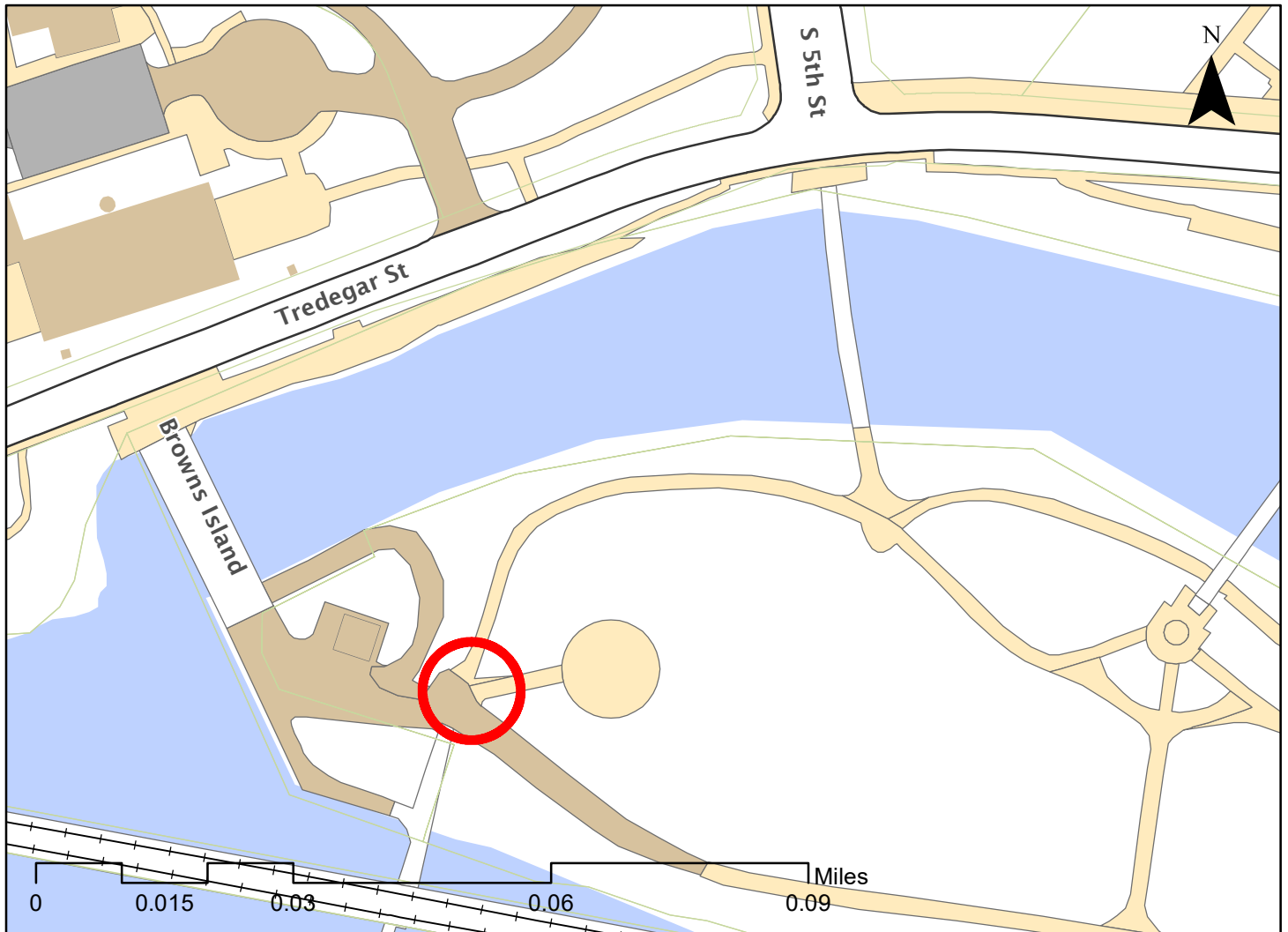
**LOCATION:** Brown's Island

**COUNCIL DISTRICT:** 6

**PROPOSAL:** Review for final location, character and extent review of the relocation of the Mill sculpture to make space for the future Emancipation Monument being planned by the state Dr. Martin Luther King Jr. Memorial Commission.



*For questions, please contact Josh Son  
at 646-3741 or [joshua.son@richmondgov.com](mailto:joshua.son@richmondgov.com)*





## Application for URBAN DESIGN COMMITTEE Review

Department of Planning and Development Review  
Planning & Preservation Division  
900 E. Broad Street, Room 510  
Richmond, Virginia 23219  
(804) 646-6335

<http://www.richmondgov.com/CommitteeUrbanDesign>

### Application Type

- Addition/Alteration to Existing Structure  
 New Construction  
 Streetscape  
 Site Amenity

- Encroachment  
 Master Plan  
 Sign  
 Other

### Review Type

- Conceptual  
 Final

Project Name: 'The Mill' Sculpture Relocation

Project Address: Brown's Island, Richmond Virginia

Brief Project Description (this is not a replacement for the required detailed narrative) : \_\_\_\_\_

The Mill sculpture needs to be relocated (on Brown's Island) to make space for the future Emancipation Monument being planned by the State MLK Commission.

### Applicant Information

(on all applications other than encroachments, a City agency representative must be the applicant)

Name: Mark Olinger Email: mark.olinger@richmondgov.com

City Agency: Planning and Development Review Phone: 646-6305

Address: 900 E. Broad St. Richmond VA 23219

Main Contact (if different from Applicant): Andrea Almond (someone else at 3north will represent at UDC)

Company: 3north Phone: 232-8900

Email: aalmond@3north.com

### Submittal Deadlines

All applications and support materials must be filed no later than 21 days prior to the scheduled meeting of the Urban Design Committee (UDC). Please see the schedule on page 3 as actual deadlines are adjusted due to City holidays. **Late or incomplete submissions will be deferred to the next meeting.**

### Filing

Applications can be mailed or delivered to the attention of "Urban Design Committee" at the address listed at the top of this page. **It is important that the applicant discuss the proposal with appropriate City agencies, Zoning Administration staff, and area civic associations and residents prior to filing the application with the UDC.**

### UDC Background

The UDC is a ten member committee created by City Council in 1968 whose purpose is to advise the City Planning Commission on the design of projects on City property or right-of-way. The UDC provides advice of an aesthetic nature in connection with the performance of the duties of the Commission under Sections 17.05, 17.06 and 17.07 of the City Charter. The UDC also advises the Department of Public Works in regards to private encroachments in the public right-of-way.



## The Mill Sculpture Relocation

“The Mill,” a sculpture by Richmond artist Bradley Robinson, is located at the southern end of the Fifth Street Bridge to Brown’s Island. Intended to reflect the shimmering waters of the river, it stands 16 feet tall and is made of brushed aluminum with bronze edging. The sculpture has a crescent-shaped bench around it, which creates a nice viewing spot. The sculpture was installed as part of the Brent Halsey Bridge project which created a new pedestrian bridge to Brown’s Island at the terminus of 5<sup>th</sup> Street. The project was completed in December of 2011. Below is a quote from Bradley Robinson regarding the design of the sculpture:

*“When designing the sculpture and benches, I was trying to maintain a tension with both the past and present of Richmond. The piece was situated facing a very modern city, yet one could turn around and be enveloped by a wild river that bore the remnants of an earlier industrial age. In the final design, I chose to reference the island’s industrial past but used a material (aluminum) that would relate to the contemporary buildings just across the canal. I also incorporated large granite boulders to acknowledge the natural setting of the island and its roles in powering the mill that once stood there. I wanted to create a simple, elegant form that harmonizes with the surrounding beauty, both natural and architectural. I hoped to create a ‘place’ where people could meet and interact. I wanted to honor all the men and women who labored on and around Brown’s Island, particularly those who worked in the paper mill, which this sculpture directly references.”*

The Dr. Martin Luther King, Jr. Memorial Commission was established by the 1992 Virginia General Assembly pursuant to House Bill 997. The Commission initiates year-round events that reinforce the Kingian principles, specifically, the Beloved Community, and collaborates with various state and local groups to promote the principles and legacy of Dr. King throughout the Commonwealth. As part of its commemoration of the 150th Anniversary of the Emancipation Proclamation and abolition of slavery in the United States, the Virginia Martin Luther King, Jr. Memorial Commission will construct the Emancipation Proclamation and Freedom Monument on Brown’s Island.

The monument, designed by Thomas Jay Warren of Oregon, will feature a 12-foot bronze statue representing newly freed slaves. Dedicated to the contributions of African American Virginians in the centuries-long fight for emancipation and freedom, the monument also will highlight notable African American Virginians who have made significant contributions to the emancipation and freedom of formerly enslaved persons or descendants. The base of the monument will feature the names, images, and brief biographical information about eight African American Virginians whose lives were dedicated to Emancipation and freedom — five individuals from the period before Emancipation through 1865, and five who continued to work for freedom from 1866 to 1970.

The MLK Commission has selected the current site of The Mill statue on Brown’s Island as the location for their new Emancipation Monument. The Mill statue must be relocated to another location on the island before the Emancipation Monument planning and construction can be completed. Venture Richmond has been tasked with helping the City and State facilitate that move. This proposal is for the relocation of The Mill statue to a central location further west on the island near the foot of the Tyler Potterfield Bridge. This location was chosen because of the potential of the sculpture to activate that intersection for pedestrians and because it is highly visible from multiple directions. The sculpture, benches, and hardscape will be installed in the same arrangement as they are now with the addition of some plantings. The existing site’s hardscape will be cleanly removed and any disturbed areas reseeded with grass.

# THE MILL SCULPTURE RELOCATION

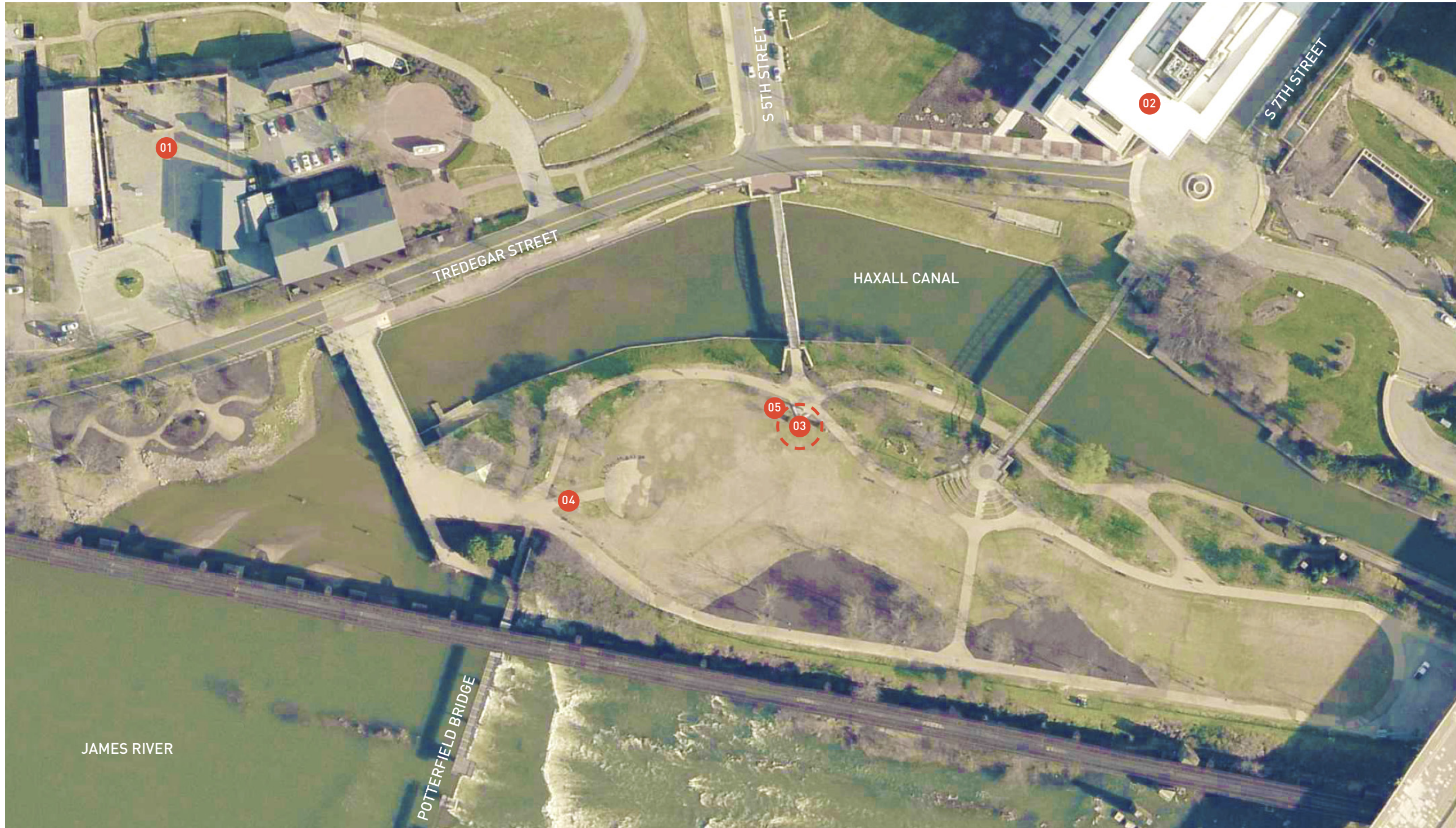
These DESIGN STUDY, undertaken by 3north, PLLC in 2018, are prepared exclusively for Venture Richmond.  
All content © 3north 2018.

This study may not be photocopied, scanned, archived, or retained electronically,  
or reproduced in any form, without written permission from 3north.



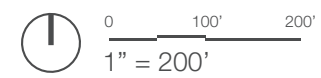
# SITE ANALYSIS





### AERIAL KEY

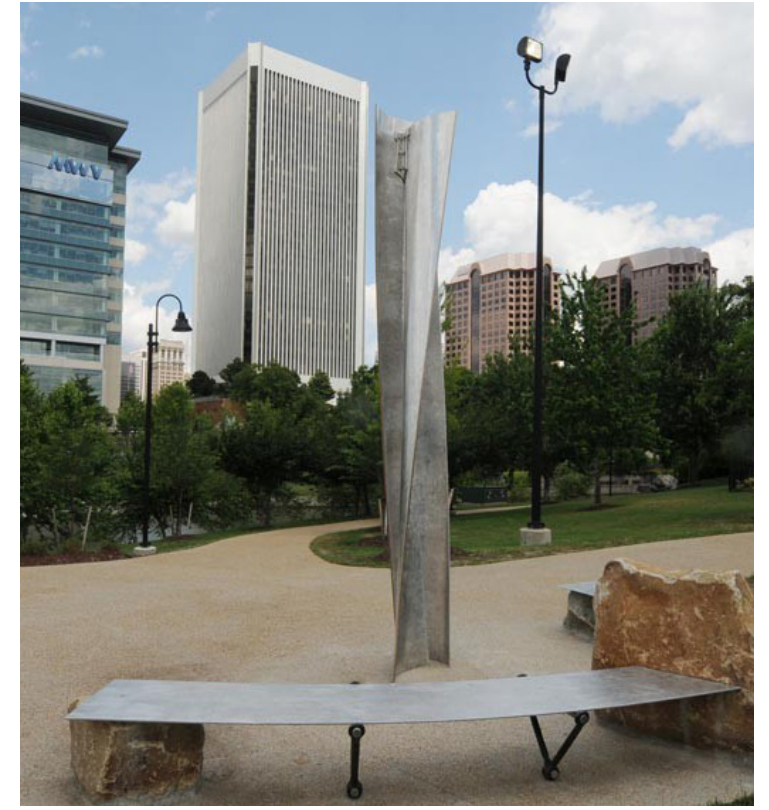
- 01 American Civil War Museum
- 02 WestRock CoStar Group
- 03 Current Sculpture Location
- 04 Proposed Sculpture Location
- 05 Proposed Emancipation Monument Location



# AERIAL

THE MILL SCULPTURE RELOCATION | DESIGN STUDY | 09 FEBRUARY 2018

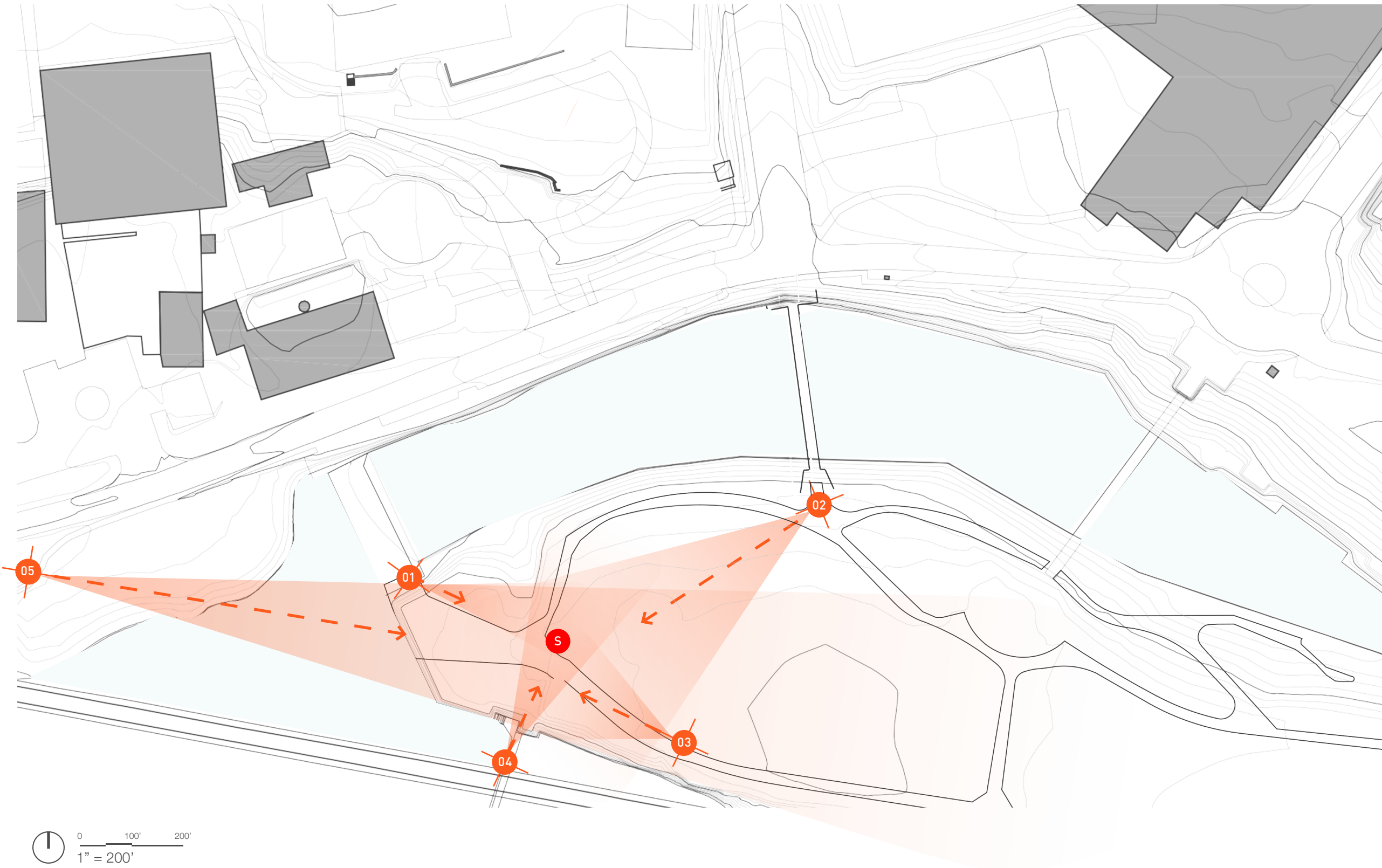




# EXISTING SCULPTURE IMAGES

THE MILL SCULPTURE RELOCATION | DESIGN STUDY | 09 FEBRUARY 2018





**SITE ATTRACTIONS**

**S** Sculpture

**KEY VIEWS OF SITE**

**01** Front Approach to Sculpture

**02** View From Original Placement of Sculpture

**03** Rear Approach to Sculpture

**04** Approach from Potterfield Bridge

**05** Aerial View of Brown's Island

# VIEWSHEDS

THE MILL SCULPTURE RELOCATION | DESIGN STUDY | 09 FEBRUARY 2018





# VISUALIZATION

THE MILL SCULPTURE RELOCATION | DESIGN STUDY | 09 FEBRUARY 2018

01 FRONT APPROACH TO SCULPTURE





# VISUALIZATION

THE MILL SCULPTURE RELOCATION | DESIGN STUDY | 09 FEBRUARY 2018

02 VIEW FROM ORIGINAL PLACEMENT OF SCULPTURE





# VISUALIZATION

THE MILL SCULPTURE RELOCATION | DESIGN STUDY | 09 FEBRUARY 2018

03 REAR APPROACH TO SCULPTURE



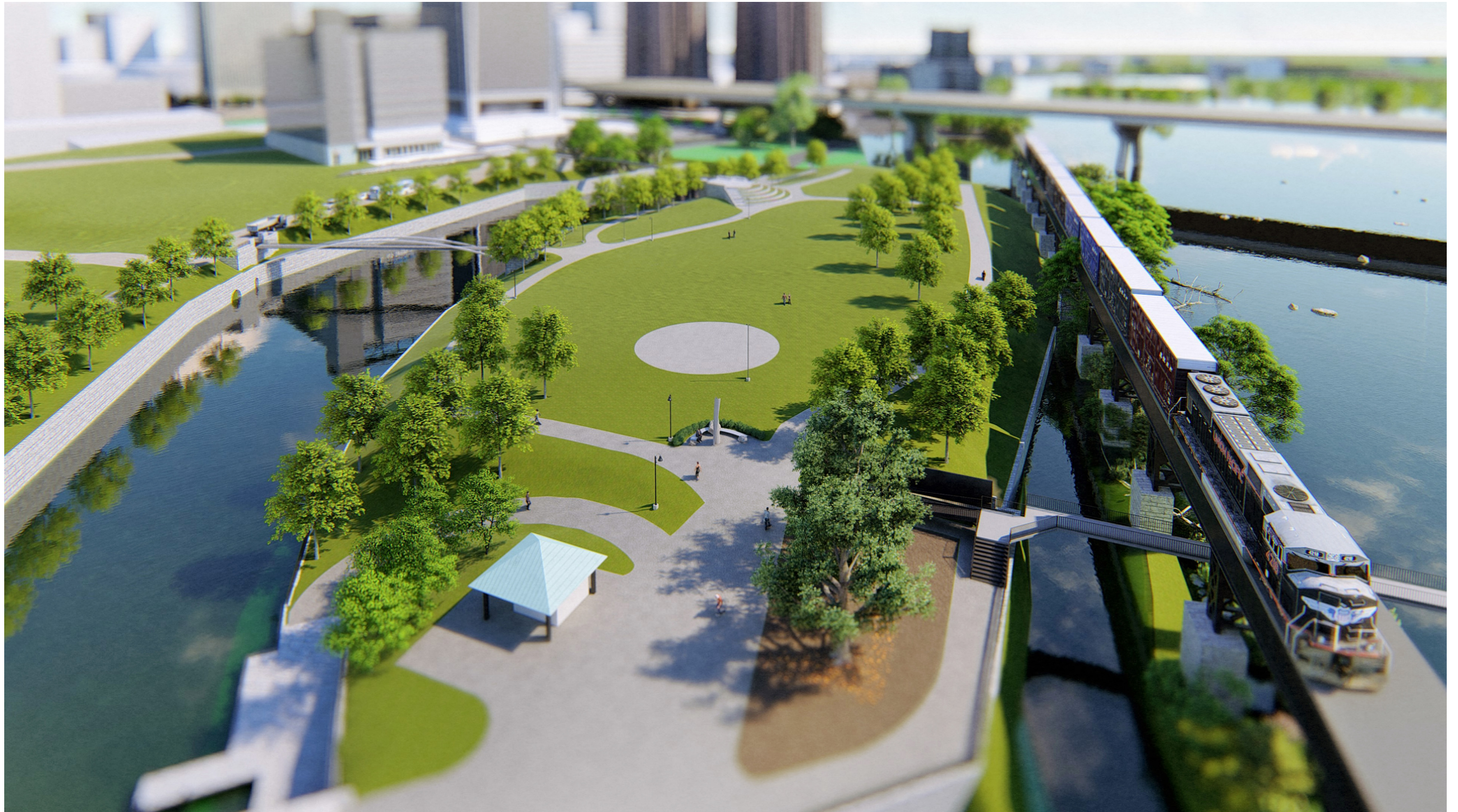


# VISUALIZATION

THE MILL SCULPTURE RELOCATION | DESIGN STUDY | 09 FEBRUARY 2018

04 APPROACH FROM POTTERFIELD BRIDGE



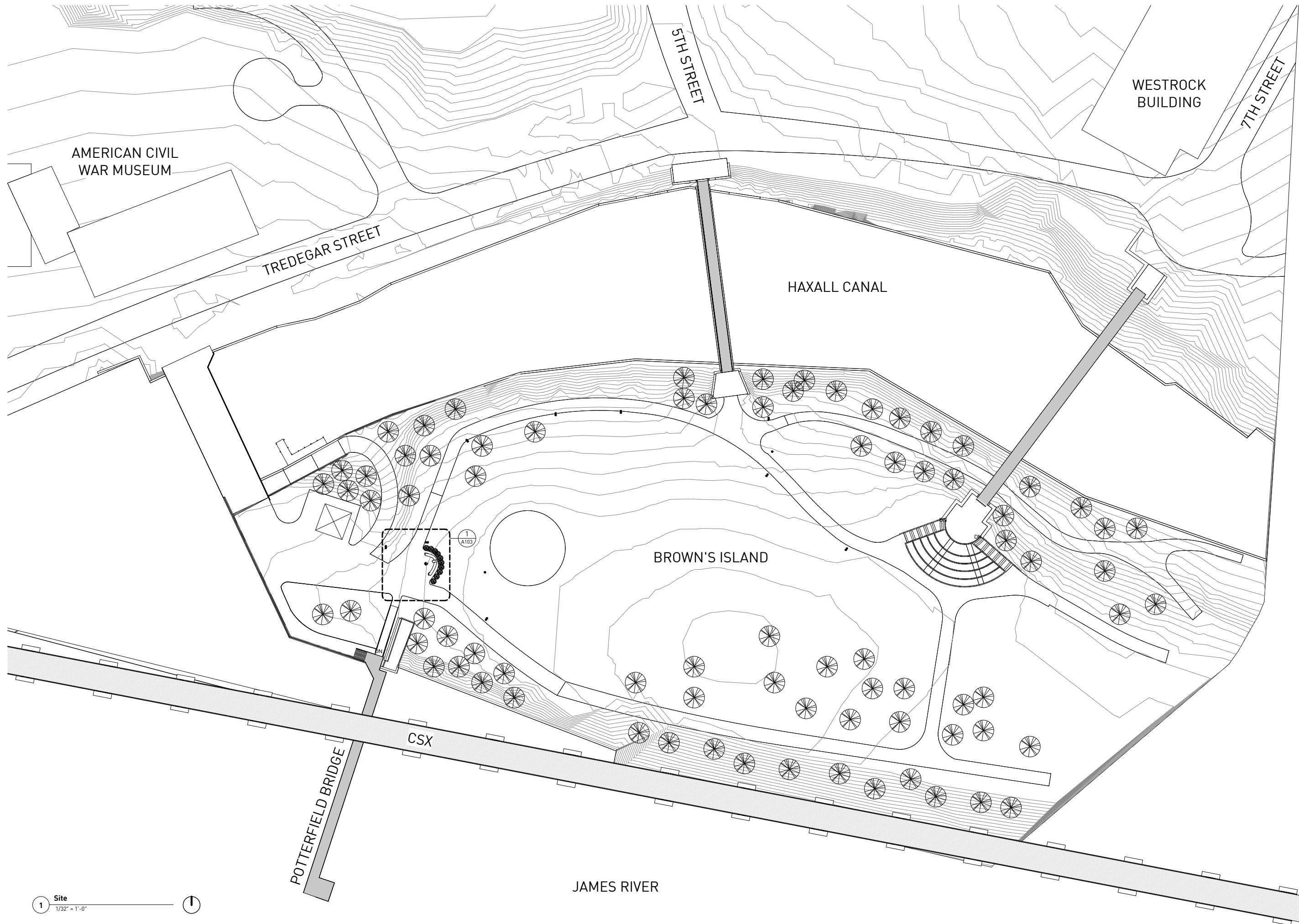


# VISUALIZATION

THE MILL SCULPTURE RELOCATION | DESIGN STUDY | 09 FEBRUARY 2018

05 AERIAL VIEW OF BROWN'S ISLAND





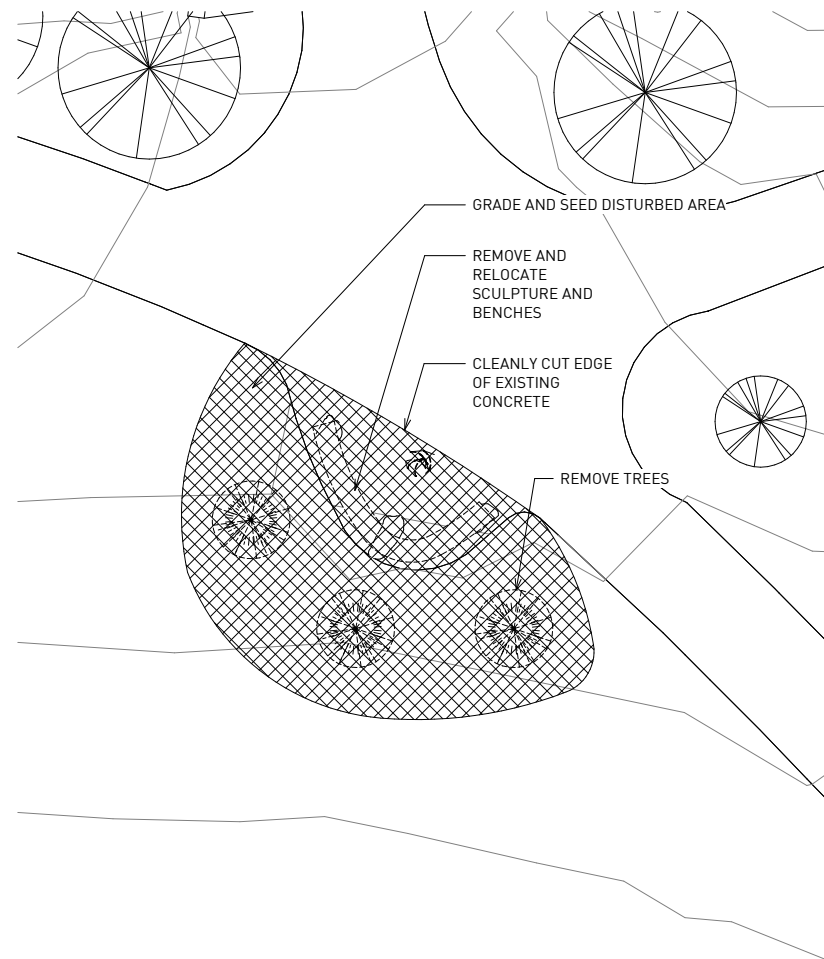
1 Site  
1/32" = 1'-0"

REVISIONS  
ISTAMPI

BROWN'S ISLAND SCULPTURE  
2000 TEMPLATE AVE  
RICHMOND VA 23224  
8 FEBRUARY 2018  
PROPOSAL



©2017  
www.3north.com  
804 232 8900



2 Site - Old Location Demo  
1/8" = 1'-0"



1 Site - Proposed Location Demo  
1/8" = 1'-0"

REVISIONS

BROWN'S ISLAND SCULPTURE  
2000 TEMPLATE AVE  
RICHMOND VA 23224

PROPOSAL

8 FEBRUARY 2018

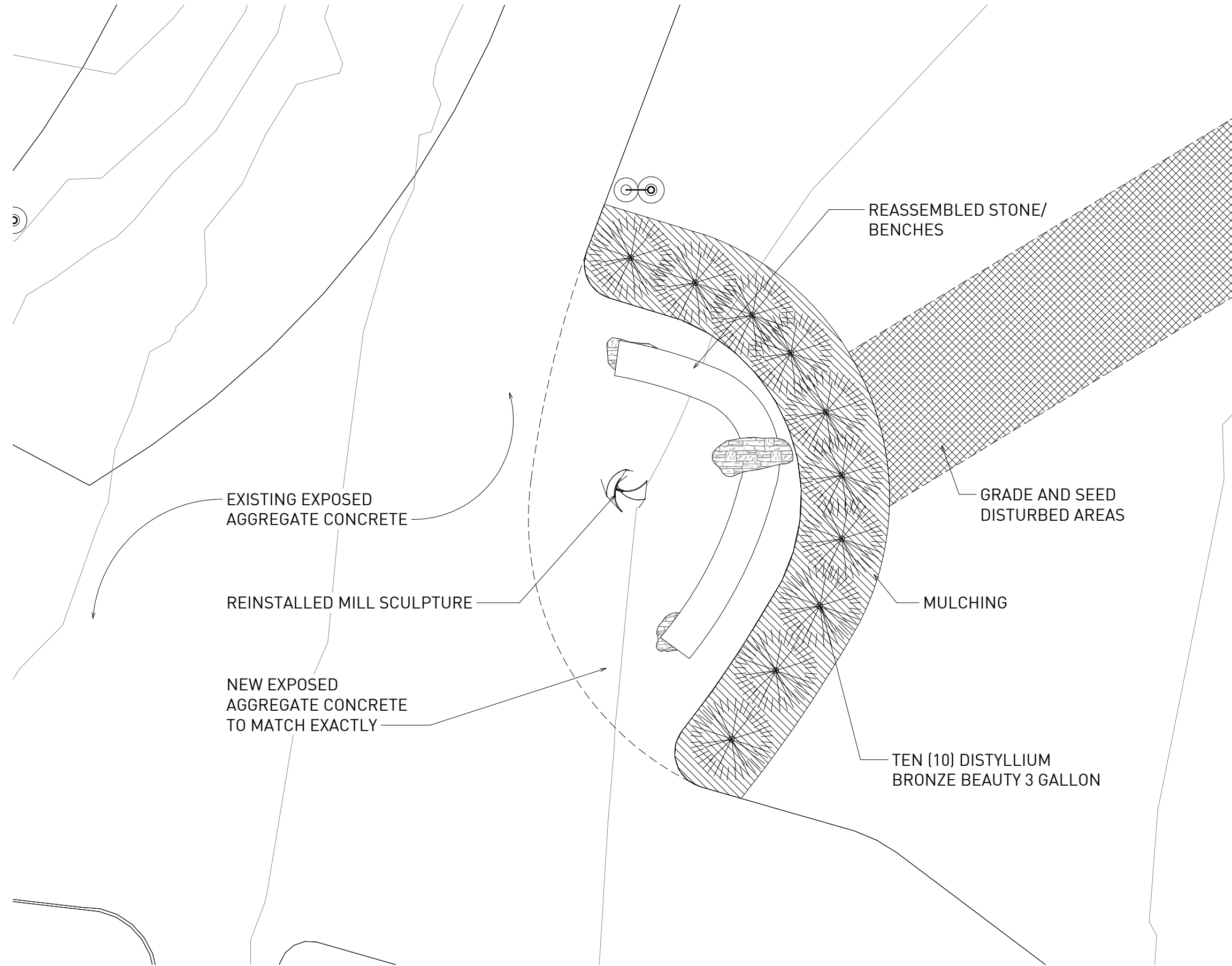
A102  
DEMO PLANS



©2017

www.3north.com  
804 232 8900





1 Site - Proposed Location New  
3/8" = 1'-0"

REVISIONS

**BROWN'S ISLAND SCULPTURE**  
2000 TEMPLATE AVE  
RICHMOND VA 23224

PROPOSAL

8 FEBRUARY 2018

**A103**  
PROPOSED PLANS



©2017

www.3north.com  
804.232.8900