

Broad Rock Creek Park Phase 1

Urban Design Committee - Final Review
February 12, 2026



Project for:



DEPARTMENT OF
**PARKS, RECREATION
AND COMMUNITY
FACILITIES**

Project by:



Table of Contents

- 1 Existing Conditions.....3**
- 2 Phase 1 Plan.....6**
- 3 Character Imagery.....16**
- 4 Project Schedule.....22**

1 Existing Conditions

Existing Conditions

Site Photos

Existing Conditions

LEGEND

- 1 Broad Rock Creek Park
- 2 Broad Rock Creek
- 3 Goode’s Creek
- 4 Current Proposed Fall Line Trail Alignment
- 5 Potential Future Alignment of Fall Line Trail or Spur Trails
- 6 Existing Art Installations

- Stream or Pond
- Wetland
- Resource Protection Area (RPA)



Site Photos



Key Map



2 Phase 1 Plan

Phase 1 Plan

Phase 1 Detail Plan: Main Park Area and Restroom

Restroom and Maintenance Building

Tree Preservation and Removal Plan

Site Details

Phase 1 Planting Plan

Phase 1 Maintenance Plan

Phase 1 Park Improvements

LEGEND

- 1 Paved Multi-Use Trail
- 2 Restroom/Storage
- 3 Main Entrance Path
- 4 Public Art Node
- 5 Existing Medicine Wheel Installation to Remain

FUTURE (FOR CONTEXT ONLY)

- A Fall Line Trail (or Spur Trail)
- B Earthen Nature Trail
- C Observation/ Play Tower
- D Bridge Replacement
- E Trail to Residential Area
- F Playgrounds



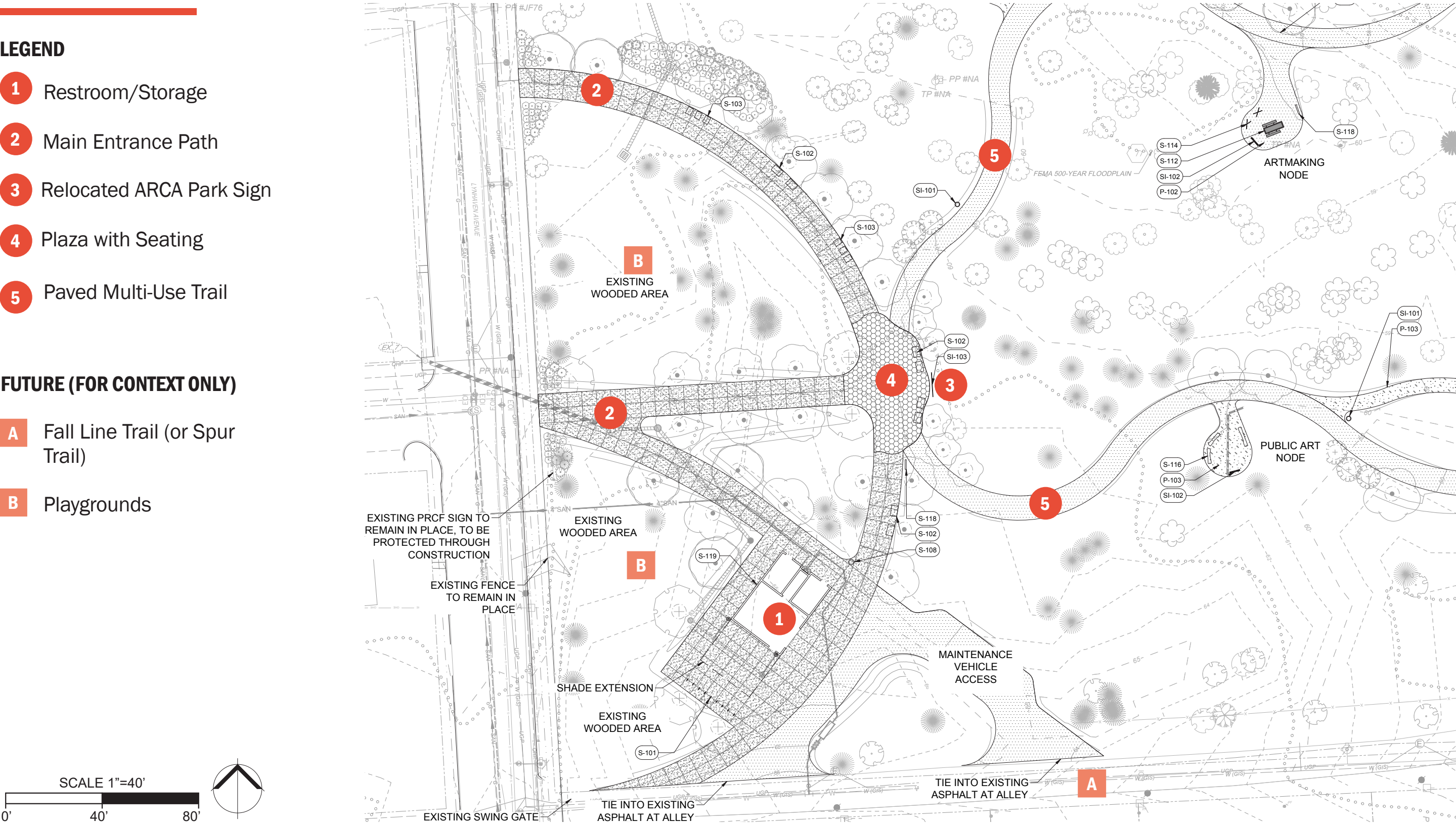
Phase 1 Detail Plan: Main Park Area and Restroom

LEGEND

- 1 Restroom/Storage
- 2 Main Entrance Path
- 3 Relocated ARCA Park Sign
- 4 Plaza with Seating
- 5 Paved Multi-Use Trail

FUTURE (FOR CONTEXT ONLY)

- A Fall Line Trail (or Spur Trail)
- B Playgrounds



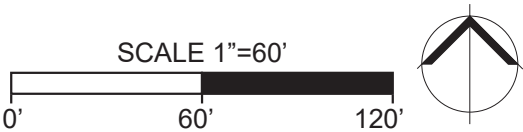
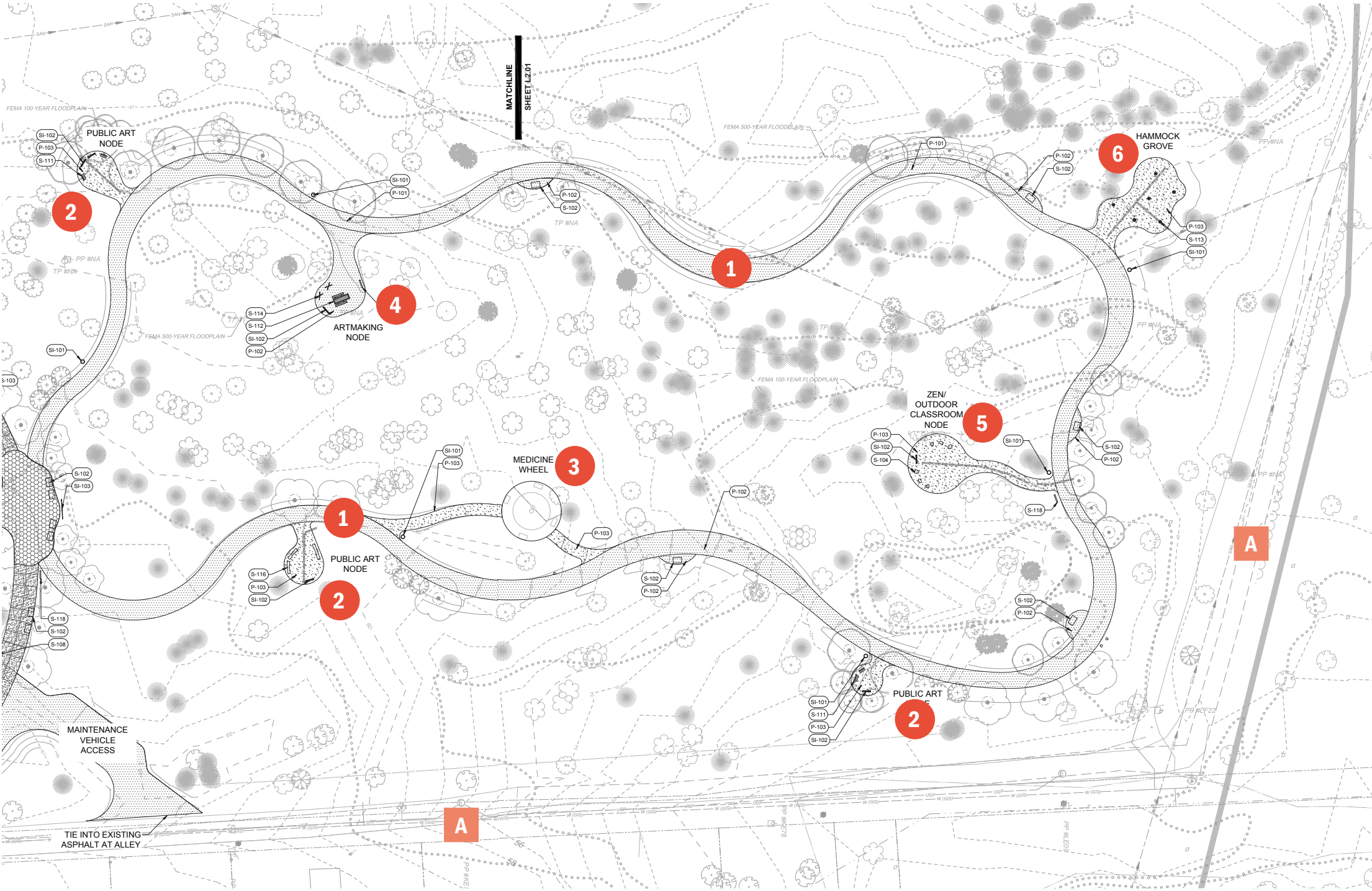
Phase 1 Detail Plan: Paved Multi-use Trail

LEGEND

- 1 Paved Multi-use Trail
- 2 Public Art Node
- 3 Medicine Wheel to Remain
- 4 Artmaking Node
- 5 Zen Space/Outdoor Classroom
- 6 Bring Your Own Hammock Grove

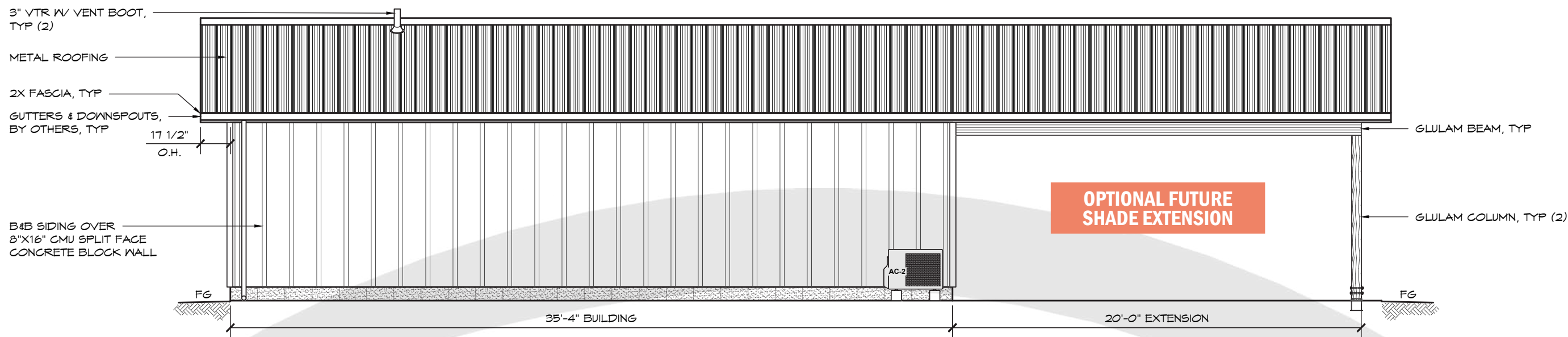
FUTURE (FOR CONTEXT ONLY)

- A Fall Line Trail (or Spur Trail)

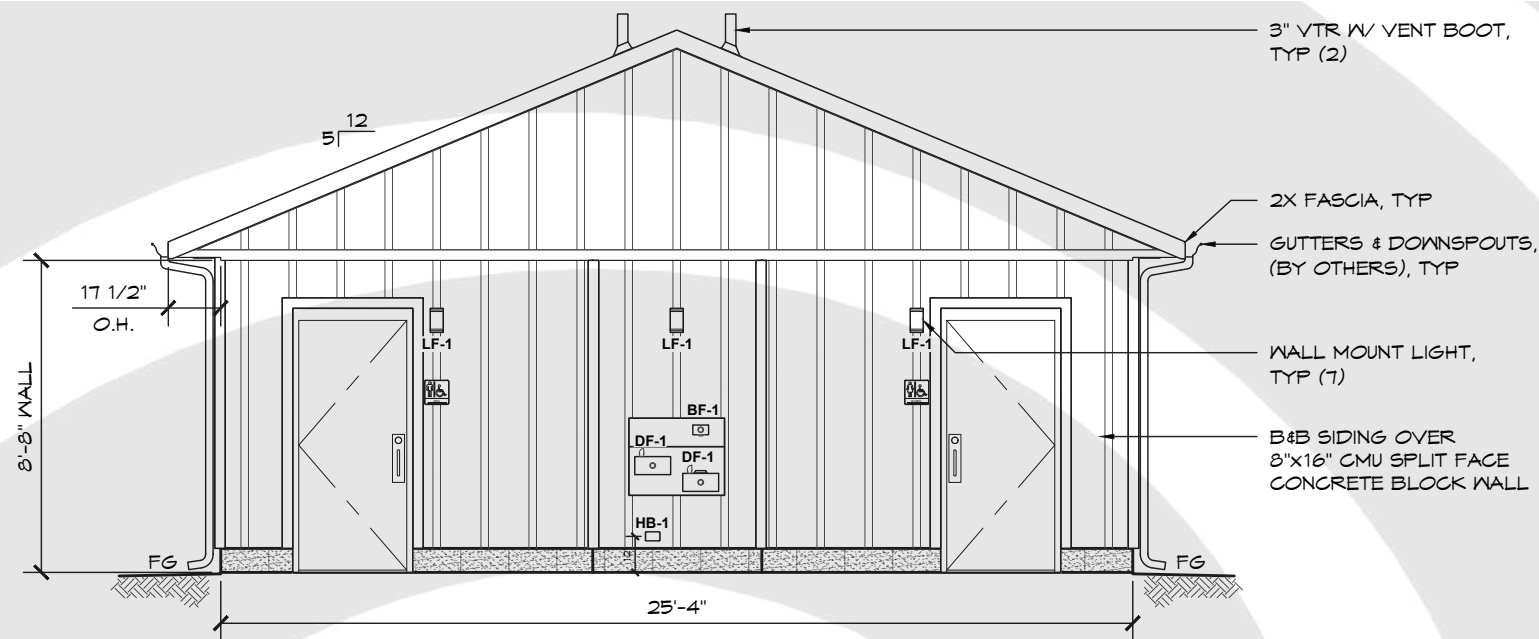




Restroom/Storage Building

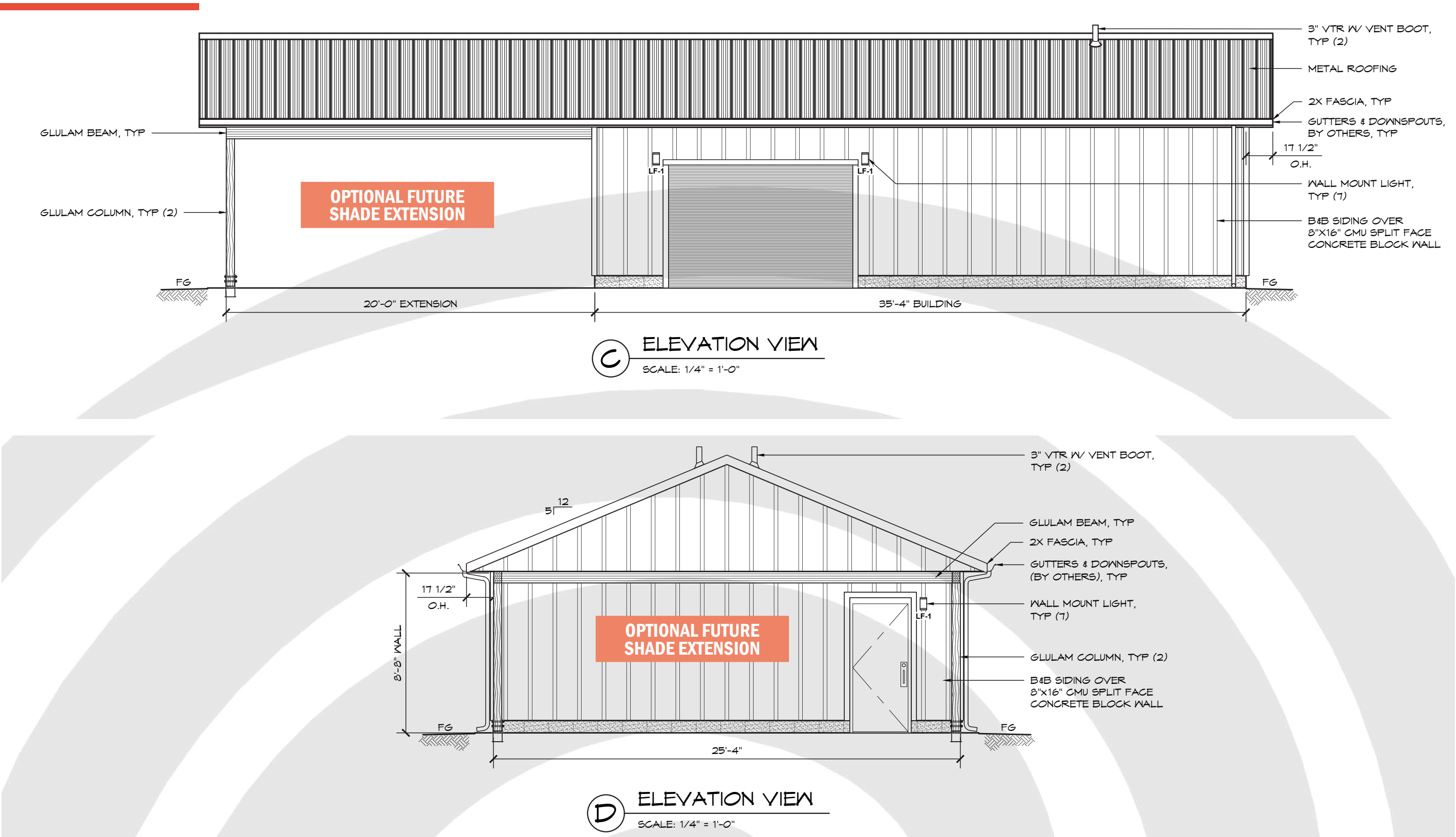


A ELEVATION VIEW
SCALE: 1/4" = 1'-0"

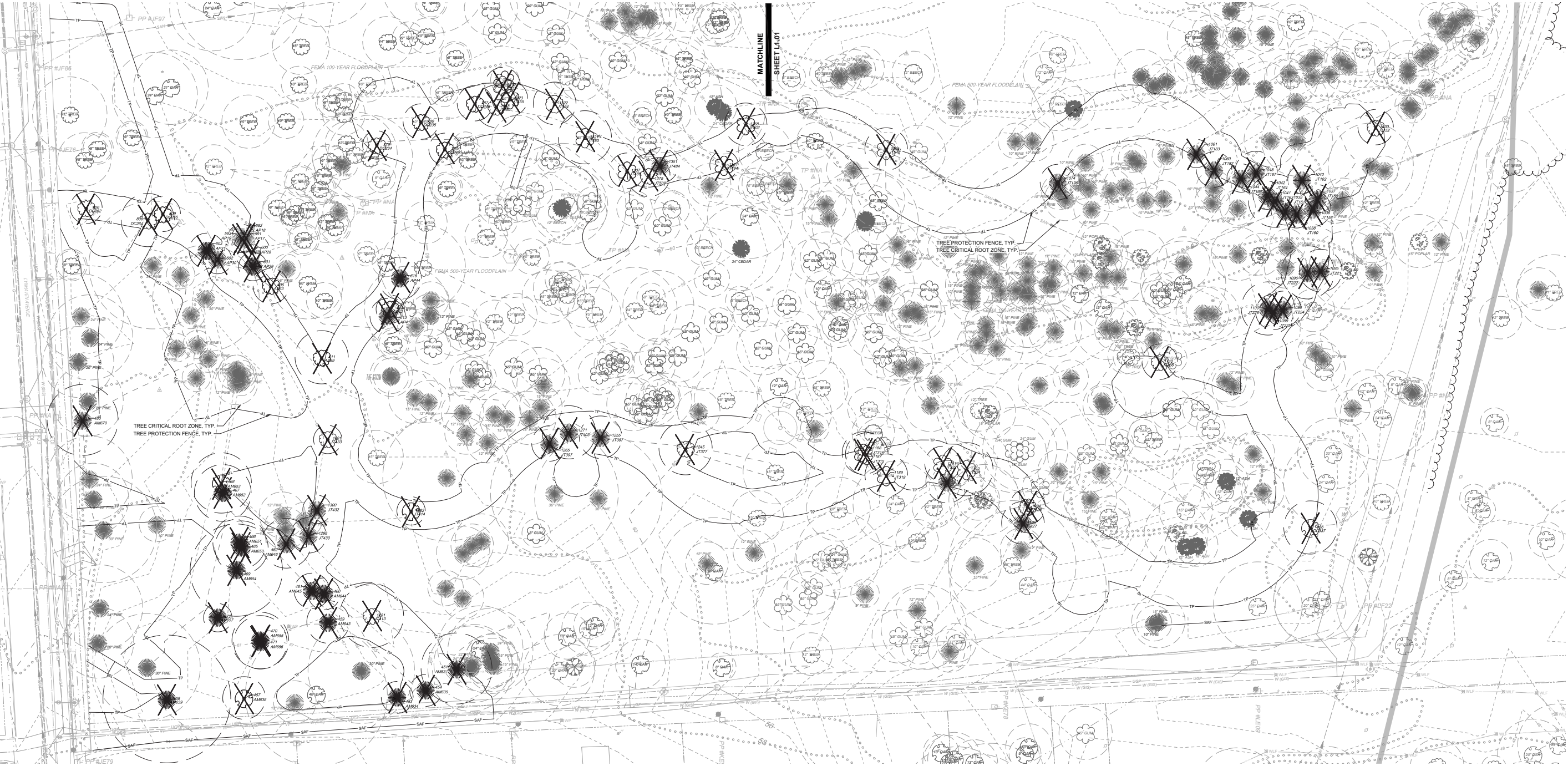


B ELEVATION VIEW
SCALE: 1/4" = 1'-0"

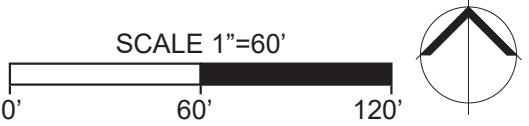
Restroom/Storage Building



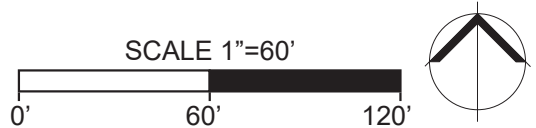
Tree Preservation and Removal Plan



Total trees being removed: 84
New trees being planted: 86



1. *Journal of the American Medical Association*, 1997; 277: 1001-1005.



Phase 1 - Preliminary Park Maintenance Plan



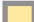

Maintenance Notes:

Landscape Maintenance:

- ▶ Lawn areas to be mown and maintained according to City of Richmond Standard Practices.
- ▶ Shrubs and trees at park entrance and in vicinity of the multi-use path to be pruned for structural and clearance reasons only and invasive plants to be controlled; planting bed areas to be top dressed annually with double shredded hardwood mulch.

Hardscape Maintenance:

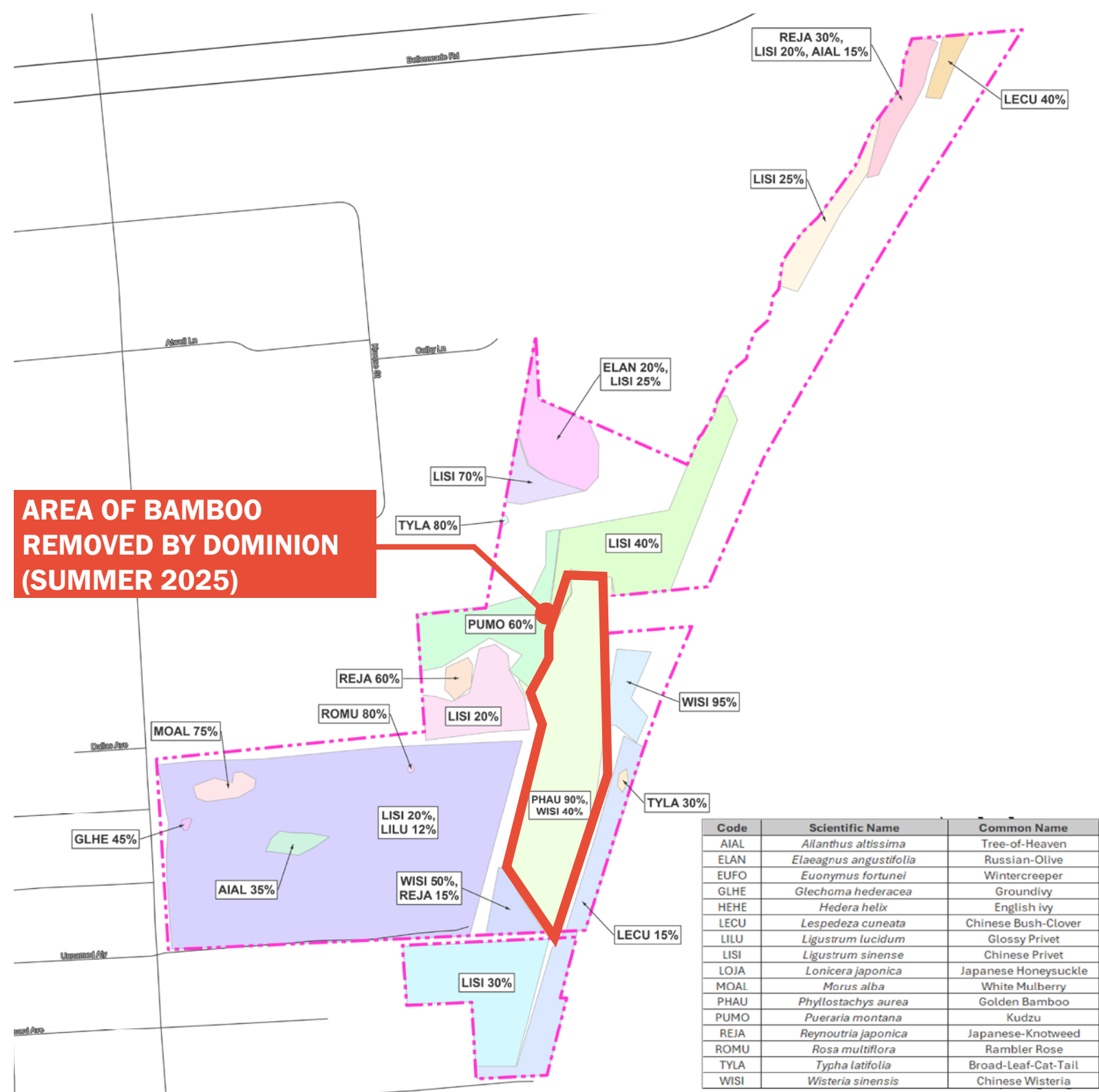
- ▶ Site furnishings and public art to be inspected and repaired/replaced as needed.
- ▶ Signage to be cleaned and replaced as needed for maintenance and legibility.
- ▶ Trail to be cleared of vegetative debris following storms and as needed.

-  Turf Lawn Maintenance (routine mowing + water to establishment)
-  Tree and Shrub Care along Path (pruning for structural, clearance, and site lines only, and invasive plant control)
-  Plant Bed Maintenance (seasonal weeding, pruning, mulching + watering for establishment)
-  Invasive Plant Control Efforts (per recommendations of invasive plant species management plan / or conducted by others)



Invasive Plant Species

- Invasive plant species are prevalent throughout the site and threaten areas of mature tree canopy
- Invasive plants of particular concern include golden bamboo, kudzu, and Chinese wisteria
- Dominion Power to remove and control 3 acres of bamboo in Summer 2025 to protect adjacent power line
- Invasive Plant Species Management Plan to be implemented by PRCF



4 Character Imagery

Main Park Area Site Elements

Forest Loop Trail

**Reuse of Existing Site Elements and Sustainable
Materials**

Landscape

Main Park Area Site Elements



Amenities and Furnishings

Character Imagery: Forest Loop Trail



Multi-use Forest Trail



Places to Create Art



Interpretive Signage with Prompts to Observe Nature



Bring Your Own Hammock Grove



Art Display Box

Amenities and Furnishings

Reuse of Existing Site Elements and Sustainable Materials



Medicine Wheel Art Installation to Remain



Art to be Stored and Relocated



Painted Benches and Art to be Stored and Relocated

Reuse of Existing Site Elements



Permeable Pavers

Permeable Paving

Landscape



Red Maple (*Acer rubrum*)



Sycamore (*Platanus occidentalis*)



Scarlet Oak (*Quercus coccinea*)

Canopy Trees



Pawpaw (*Asimina triloba*)



Hornbeam (*Carpinus caroliniana*)



American Holly (*Ilex opaca*)

Small Flowering Trees

5 Project Schedule

Project Schedule



Questions?

Project for:



DEPARTMENT OF
**PARKS, RECREATION
AND COMMUNITY
FACILITIES**

Project by:



TIMMONS GROUP