



Staff Report
City of Richmond, Virginia



Commission of Architectural Review

4. COA-123207-2023	Final Review	Meeting Date: 1/24/2023
Applicant/Petitioner	Luriel Smith-Harrison	
Project Description	Replace asphalt shingles on a front porch roof with metal.	
Project Location		
Address: 2715 E Broad Street		
Historic District: St John's Church		
<p>High-Level Details:</p> <p>Applicant requests to remove asphalt shingles on the front porch roof of a two-story, brick, detached dwelling in the Second Empire style ca. 1885.</p> <p>The asphalt shingles will be replaced with a terne-coated metal that will be painted according to the guidelines.</p>		
Staff Recommendation	Approval	
Staff Contact	Samantha Lewis, 804-646-5207, Samantha.lewis@rva.gov	
Previous Reviews	None	
Conditions for Approval	<ul style="list-style-type: none"> • None. 	

Staff Analysis

Guideline Reference	Reference Text	Analysis
Maintenance and Repair, p. 96	<i>Asphalt shingles are made of felt impregnated with asphalt and covered with colored ceramic or stone granules. This modern roofing material is an inappropriate choice for the majority of historic structures.</i>	The <i>Guidelines</i> note that asphalt shingles are inappropriate roofing material for historic structures. Applicant has indicated the asphalt shingles will be removed.

<p>Maintenance and Repair, p. 96</p>	<p><i>Most metal roofs are assembled from sheets of terne-coated steel (often called "tin"), copper, or galvanized steel. Metal roofs other than copper, corrugated galvanized steel, or terne-coated stainless steel should be painted.</i></p>	<p>Metal roofing can be approved in historic districts. Metal roofs on front porches can be seen on neighboring properties in the St John's District on this block. Applicant has indicated their desire to install a terne-coated metal roof without a standing seam that will be painted in accordance with the guidelines (Iron Ore- SW 7069). Applicant would also be amenable to a copper roof.</p> <p><u>Staff recommends approval of the terne-coated metal porch roof without a standing seam to be painted Iron Ore (SW 7069).</u></p>
--------------------------------------	--	--

Figures

Figure 1. Façade photo



Figure 2. Assessors card photos - 1950s/60s



Figure 3. 1924-1925 Sanborn map

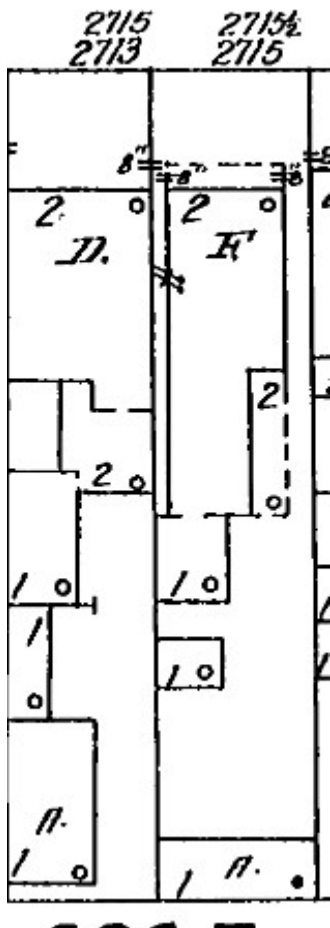


Figure 4. Assessor card information

OTHER (SPECIFY)		
✓	ROOF	
	1	ASBESTOS
	2	SLATE
✓	3	METAL
	4	TILE
	5	BUILT UP
	6	SLAG
OTHER (SPECIFY)		
✓	FLOORS	

Figure 5. 2702 E Broad Street, metal porch roof

