

Sign Type: Internally Illuminated/Neon/Double-Sided
Total Sq.Ft: 99.39
Physical Location: 3508 W Cary St, Richmond VA
Electrical: 277V



Wellcraft MFG
2113B N. Hamilton St
Richmond, VA 23230
804-918-2169
wellcraftmfg.com

Project:
Carytown

Number: QT1852

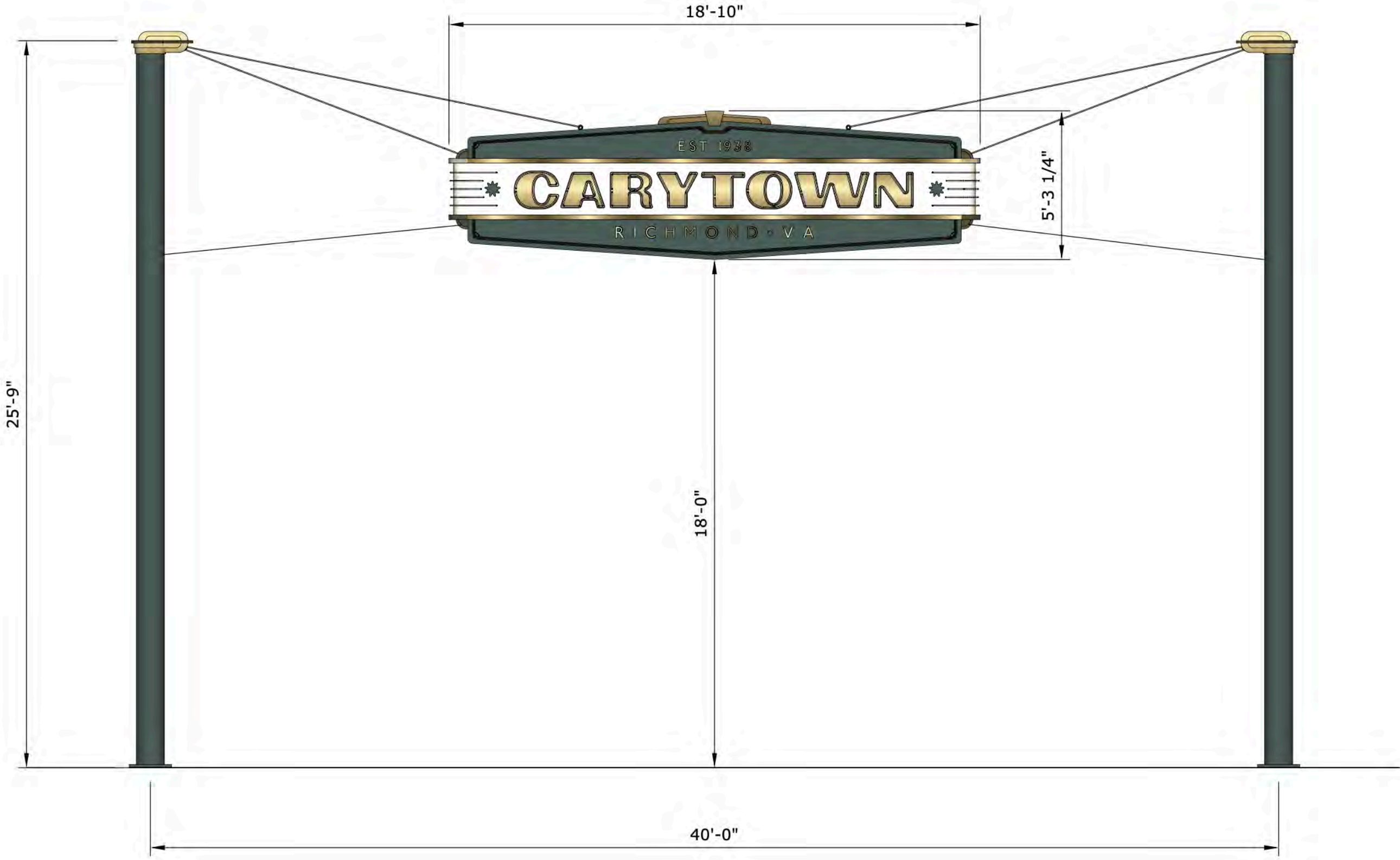
Client: CMA
Project Manager: JI
Design/Technical: JI/
SM

Date: 3.20.24

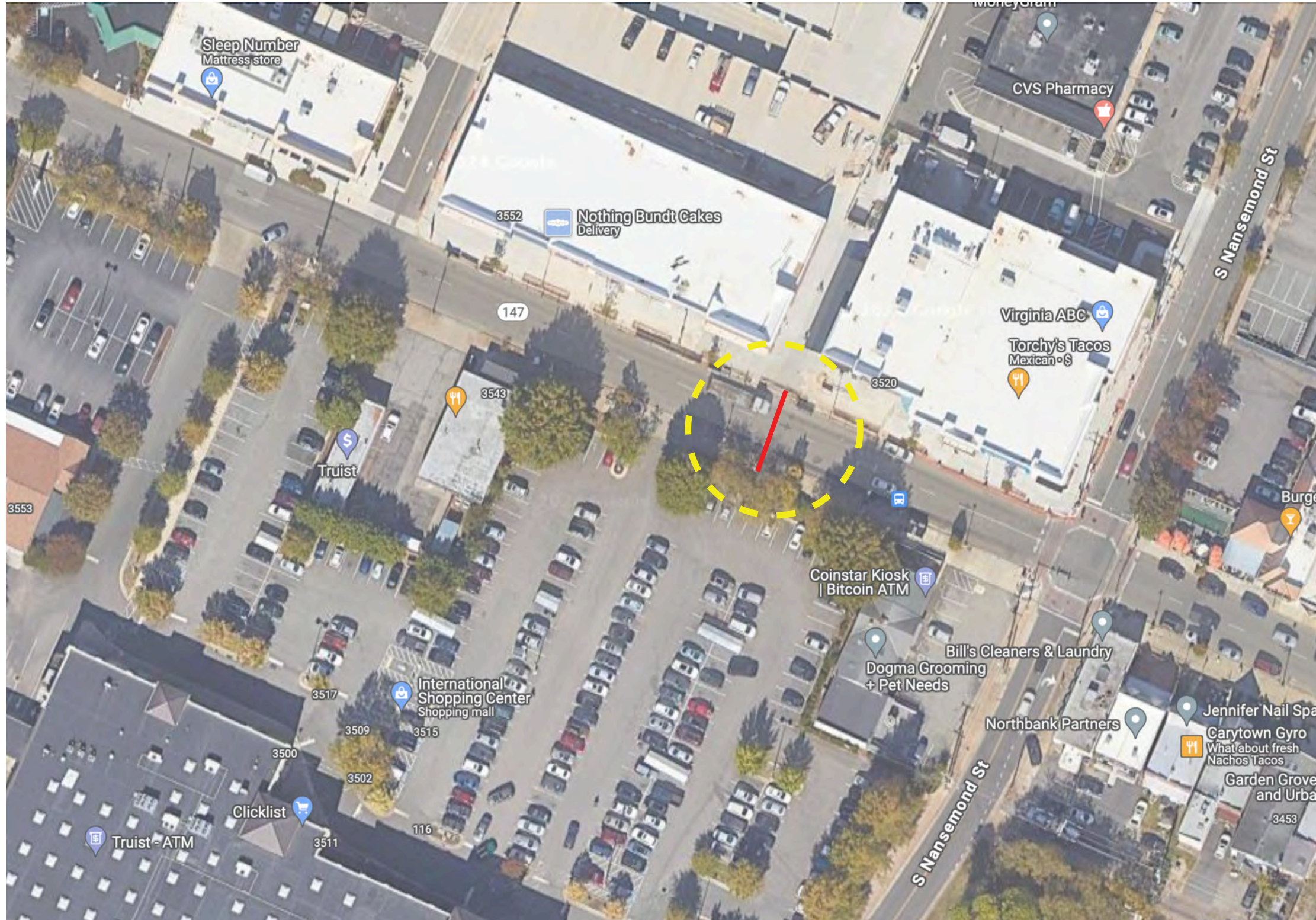
Sign Type:
Suspension

Page: 01

All concepts, ideas, design arrangements, or plans indicated or represented by these drawings which originate from Wellcraft MFG (or any portions thereof originating from Wellcraft MFG) are submitted in good faith and are to remain the sole property of Wellcraft MFG unless or until an express written agreement states that these rights are to transfer to the client (or other). No concepts, ideas, design arrangements, or plans shall be disclosed to any unauthorized person, firm, or corporation for any purpose without the written consent of Wellcraft MFG.



Sign Type: Internally Illuminated/Neon/Double-Sided
Total Sq.Ft: 99.39
Physical Location: 3508 W Cary St, Richmond VA
Electrical: 277V



Wellcraft MFG
2113B N. Hamilton St
Richmond, VA 23230
804-918-2169
wellcraftmfg.com

Project:
Carytown

Number: QT1852

Client: CMA
Project Manager: JI
Design/Technical: JI/
SM

Date: 3.20.24

Sign Type:
Suspension

Page: 02

All concepts, ideas, design arrangements, or plans indicated or represented by these drawings which originate from Wellcraft MFG (or any portions thereof originating from Wellcraft MFG) are submitted in good faith and are to remain the sole property of Wellcraft MFG unless or until an express written agreement states that these rights are to transfer to the client (or other). No concepts, ideas, design arrangements, or plans shall be disclosed to any unauthorized person, firm, or corporation for any purpose without the written consent of Wellcraft MFG.

Sign Type: Internally Illuminated/Neon/Double-Sided

Total Sq.Ft: 99.39

Physical Location: 3508 W Cary St, Richmond VA

Electrical: 277V



Wellcraft MFG
2113B N. Hamilton St
Richmond, VA 23230
804-918-2169
wellcraftmfg.com

Project:
Carytown

Number: QT1852

Client: CMA
Project Manager: JI
Design/Technical: JI/
SM

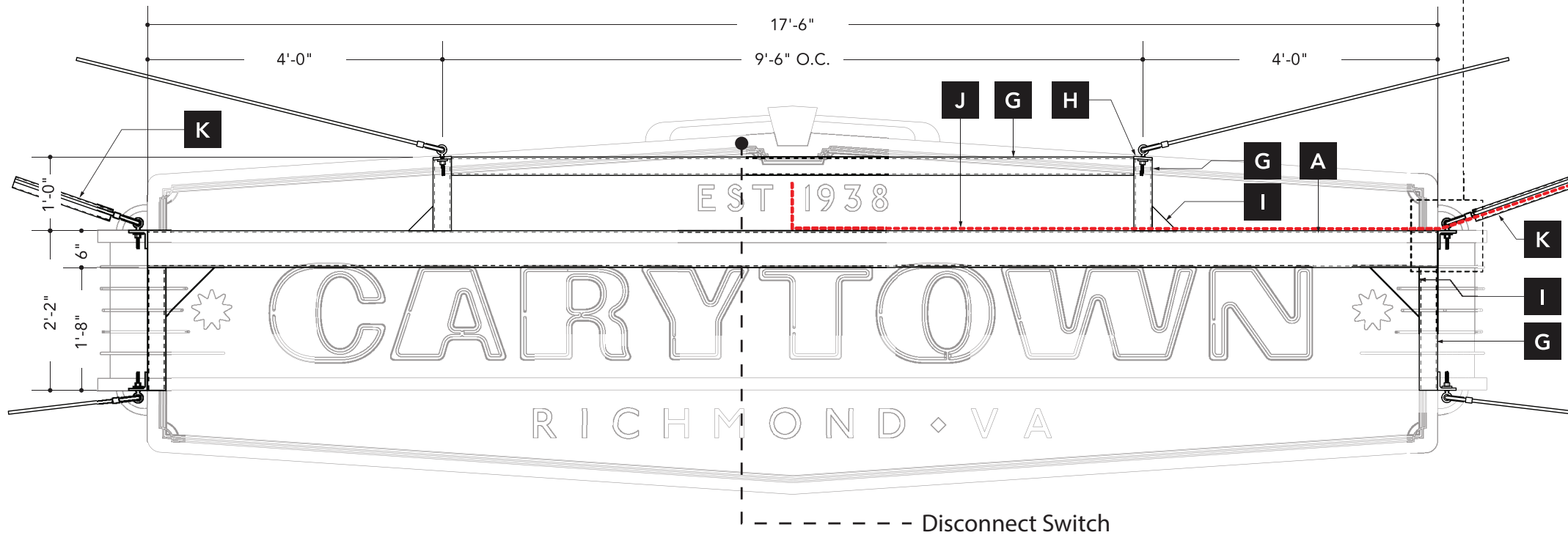
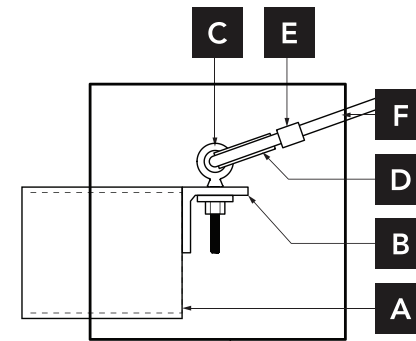
Date: 3.20.24

Sign Type:
Suspension

Page: 03

Specifications

- A** Horizontal Support Tube
6" x 6" x 1/4" A500 Square Steel Tube
- B** Mounting Angle
3" x 3" x 3/8" A-36 Steel Angle
continuously welded to end of Support
Tube w/ 3/8" dia. drilled thru-hole for
Lifting Bolt
- C** 316 Stainless Steel Eyebolt
with Shoulder-for Lifting, 3/8" -16
Thread Size, 3" Thread Length
MMC#8891T52 w/ Nut + Washer(s)
as required
- D** Heavy Duty Wire Rope Thimble - for
Lifting 316 Stainless Steel, for 1/2"
Rope Diameter. MMC#3495T55
- E** Wire Rope Compression Sleeve-for
Lifting Tin-Plated Copper, for 1/2"
Diameter Stainless Steel Rope
MMC#3883T51
- F** Wire Rope
1/2" dia. 6x19 S.S. Wire Rope
- G** Support Tube
3" x 3" x 1/4" A500 Square Steel Tube
- H** Mounting Plate
3" x 3" x 3/8" Steel Plate continuously
welded to end of Vertical Tube
3/8" dia. drilled thru-hole for Lifting
Bolt
- I** Gussett
1/2" thk Steel Plate continuously welded
to Support Tubes
- J** Power Supply / Conduit
3/4" dia. liquidtight flexible conduit w/
277V Line Voltage, jumped from Street
Lights. Conduit to run from top of
Support Pole to Cabinet Interior with
min. 25' exposed whip at top of Pole.
- K** Decorative Sleeve
1-1/2" SCH 10 (1.90 OD x .109 wall x
1.682 ID) 304 Stainless Steel Pipe to
sleeve Conduit and Wire Rope



1 Vertical Cross-Section - Suspended ID - Structural Framework
Scale: 1/2" = 1'-0"

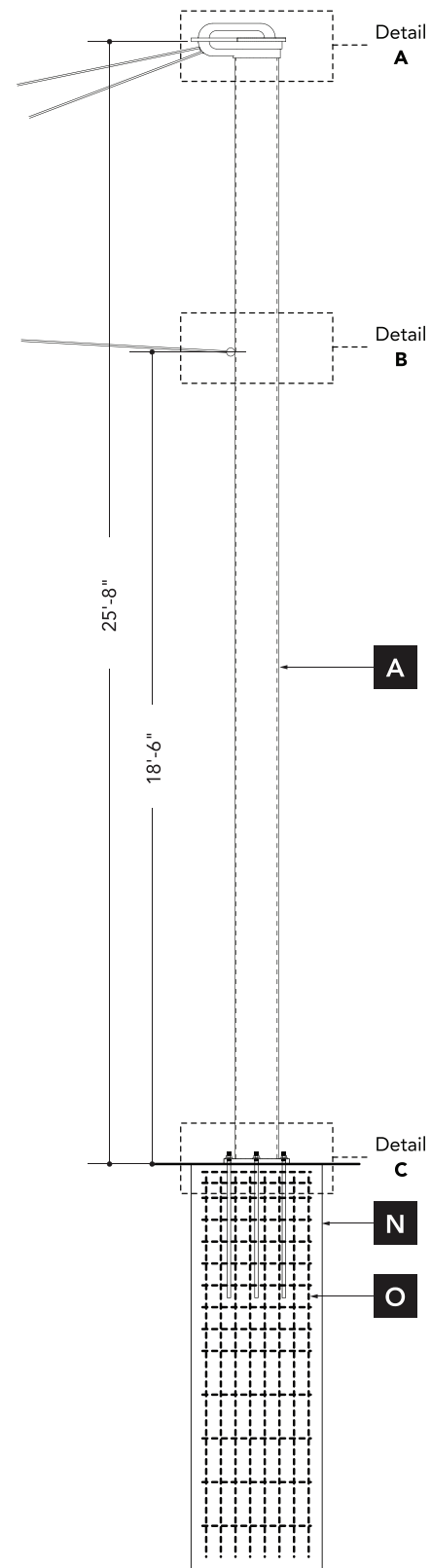
All concepts, ideas, design arrangements, or plans indicated or represented by these drawings which originate from Wellcraft MFG (or any portions thereof originating from Wellcraft MFG) are submitted in good faith and are to remain the sole property of Wellcraft MFG unless or until an express written agreement states that these rights are to transfer to the client (or other). No concepts, ideas, design arrangements, or plans shall be disclosed to any unauthorized person, firm, or corporation for any purpose without the written consent of Wellcraft MFG.

Sign Type: Internally Illuminated/Neon/Double-Sided

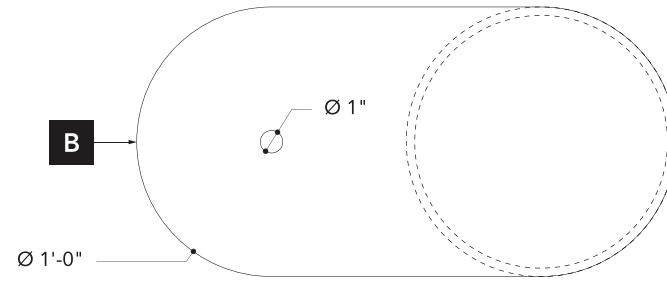
Total Sq.Ft: 99.39

Physical Location: 3508 W Cary St, Richmond VA

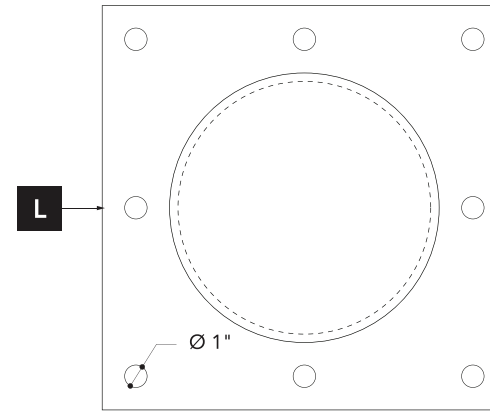
Electrical: 277V



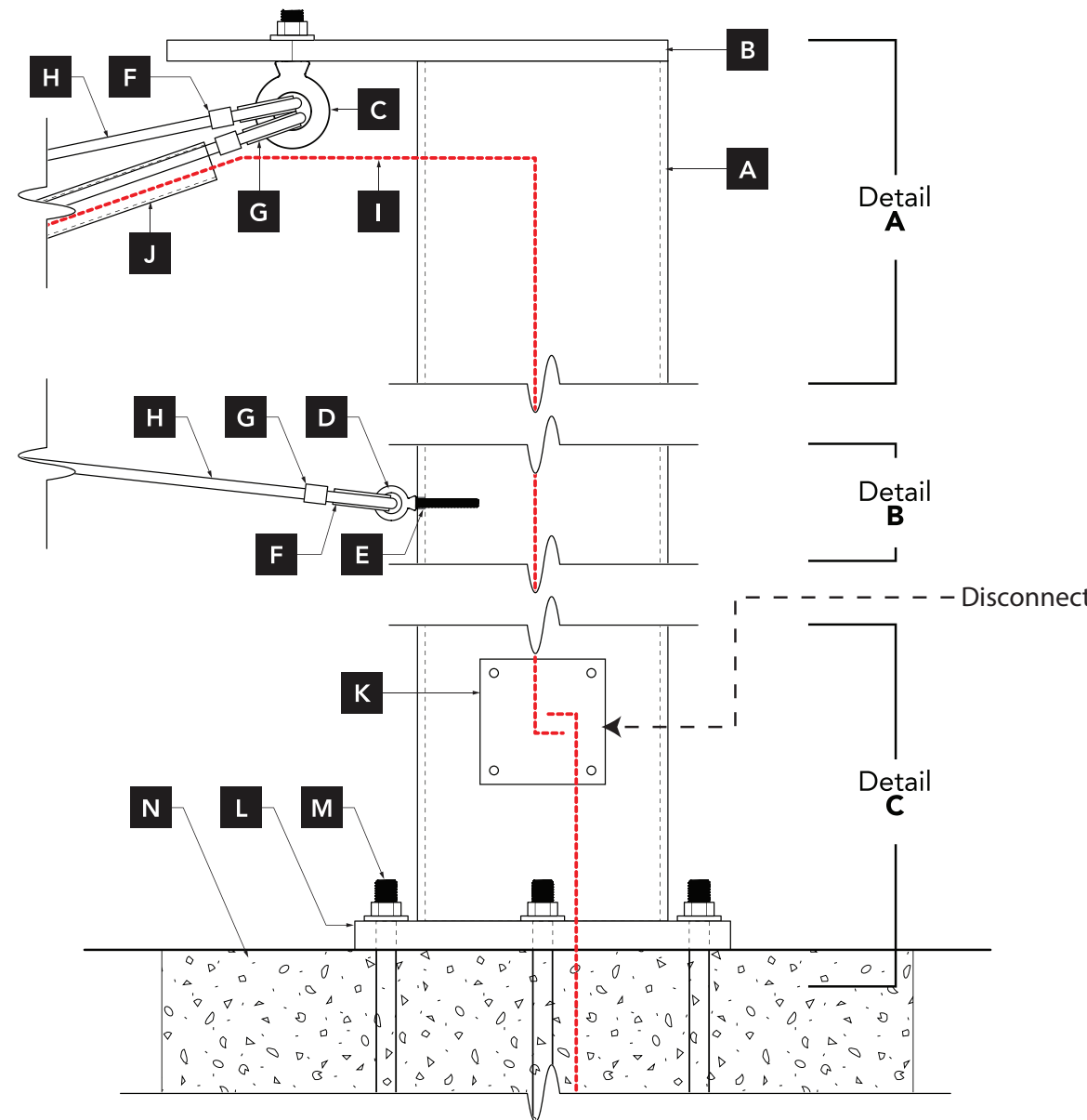
1 Vertical Cross-Section - Support Pole - Typical
Scale: 1/4" = 1'-0"



3 Mounting Plate - Plan View
Scale: 1 1/2" = 1'-0"



4 Base Plate - Plan View
Scale: 1 1/2" = 1'-0"



2 Vertical Cross-Section - Support Pole - Details
Scale: 1/4" = 1'-0"

Specifications

- A** Vertical Support Pole
12" Dia. x 3/8" Steel Pipe
- B** Mounting Plate
12" x 24" x 1" Steel Plate continuously welded to end of Support Pole w/ 1" dia. drilled thru-hole for Eyebolt
- C** 304 Stainless Steel Eyebolt with Shoulder-for Lifting, 1"-8 Thread Size, 2-1/2" Thread Length
MMC#33045T85 w/ Nut + Washer(s) as required
- D** 316 Stainless Steel Eyebolt with Shoulder-for Lifting, 3/8"-16 Thread Size, 3" Thread Length
MMC#8891T52 w/ Nut + Washer(s) as required
- E** 3/8"-16 Thread Drill + Tap Support Pole at lowest mount for Eyebolt Inset
- F** Heavy Duty Wire Rope Thimble - for Lifting 316 Stainless Steel, for 1/2" Rope Diameter. MMC#3495T55
- G** Wire Rope Compression Sleeve-for Lifting Tin-Plated Copper, for 1/2" Diameter Stainless Steel Rope
MMC#3883T51
- H** Wire Rope
1/2" dia. 6x19 S.S. Wire Rope
- I** Power Supply / Conduit
3/4" dia. liquidtight flexible conduit w/ 277V Line Voltage, jumped from Street Lights. Conduit to run from top of Support Pole to Cabinet Interior with min. 25' exposed whip at top of Pole.
- J** Decorative Sleeve
1-1/2" SCH 10 (1.90 OD x .109 wall x 1.682 ID) 304 Stainless Steel Pipe to sleeve Conduit and Wire Rope
- K** Access Panel at Base of Support Pole
- L** 18" x 18" x 1 3/8" thk. Steel Base Plate continuously welded to end of Support Pole w/ drilled thru-holes @ 7 1/2" O.C. for Anchor Bolts
- M** 1" dia. Galvanized Steel Anchor Bolts w/ 36" min. embed into Footer
- N** Concrete Footer
36" dia. x 10' D, 2500 PSI
- O** Rebar
(2) #4 Ties, top 5"
#4 Ties @ 6" O.C., top 36"
#4 Ties @ 12" O.C., Remainder
(16) #8 Vertical Ties, 3" Clearance, Typ.



Wellcraft MFG
2113B N. Hamilton St
Richmond, VA 23230
804-918-2169
wellcraftmfg.com

Project:
Carytown

Number: QT1852

Client: CMA
Project Manager: JI
Design/Technical: JI/
SM

Date: 3.20.24

Sign Type:
Suspension

Page: 04

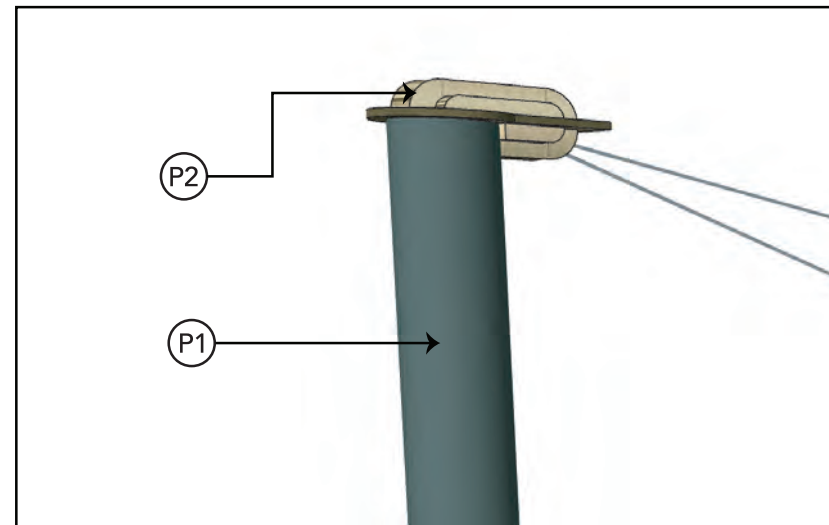
All concepts, ideas, design arrangements, or plans indicated or represented by these drawings which originate from Wellcraft MFG (or any portions thereof originating from Wellcraft MFG) are submitted in good faith and are to remain the sole property of Wellcraft MFG unless or until an express written agreement states that these rights are to transfer to the client (or other). No concepts, ideas, design arrangements, or plans shall be disclosed to any unauthorized person, firm, or corporation for any purpose without the written consent of Wellcraft MFG.

Sign Type: Internally Illuminated/Neon/Double-Sided

Total Sq.Ft: 99.39

Physical Location: 3508 W Cary St, Richmond VA

Electrical: 277V



Structural Supports - Details

Scale: NTS

Specifications

- A** Illuminated Aluminum Cabinet, Internally Welded, .125" Thk Custom Aluminum Panels
- B** Custom Bent 12mm Neon Glass Tubing
- C** 2"D Aluminum Channel Lettering, Mechanically Fastened, Plated/Polished w/ Antique Brass
- D** 4" Aluminum Accents, Plated w/ Antique Brass
- E** .5" Thk Push-Through Acrylic w/ .25" Reveal, Illuminated w/ White Returns Giving A Halo Effect. Faces of Push Through Are .063" Thk Aluminum, Plated w/ Antique Brass
- F** .063" Thk Aluminum Accents, CNC Routed, Plated w/ Antique Brass
- G** Fabricated Aluminum Accent Cap, .125" Thk CNC Routed Aluminum, Fastened w/ Self Tapping Hardware, Removeable, Plated w/ Antique Brass
- H** .25" Thk Aluminum Accent Shapes
- I** .125" Thk Aluminum Backer

Specifications

- (P1) PMS 445 C
- (P2) Antique Brass - PlateAll
- (P3) SW 9541 White Snow



Wellcraft MFG
2113B N. Hamilton St
Richmond, VA 23230
804-918-2169
wellcraftmfg.com

Project:
Carytown

Number: QT1852

Client: CMA
Project Manager: JI
Design/Technical: JI/
SM

Date: 3.20.24

Sign Type:
Suspension

Page: 05

All concepts, ideas, design arrangements, or plans indicated or represented by these drawings which originate from Wellcraft MFG (or any portions thereof originating from Wellcraft MFG) are submitted in good faith and are to remain the sole property of Wellcraft MFG unless or until an express written agreement states that these rights are to transfer to the client (or other). No concepts, ideas, design arrangements, or plans shall be disclosed to any unauthorized person, firm, or corporation for any purpose without the written consent of Wellcraft MFG.

Sign Type: Internally Illuminated/Neon/Double-Sided
Total Sq.Ft: 99.39
Physical Location: 3508 W Cary St, Richmond VA
Electrical: 277V



Wellcraft MFG
2113B N. Hamilton St
Richmond, VA 23230
804-918-2169
wellcraftmfg.com

Project:
Carytown

Number: QT1852

Client: CMA
Project Manager: JI
Design/Technical: JI/
SM

Date: 3.20.24

Sign Type:
Suspension

Page: 06



Night Illumination

All concepts, ideas, design arrangements, or plans indicated or represented by these drawings which originate from Wellcraft MFG (or any portions thereof originating from Wellcraft MFG) are submitted in good faith and are to remain the sole property of Wellcraft MFG unless or until an express written agreement states that these rights are to transfer to the client (or other). No concepts, ideas, design arrangements, or plans shall be disclosed to any unauthorized person, firm, or corporation for any purpose without the written consent of Wellcraft MFG.

Project:
Carytown

Number: 1852

Client: CMA

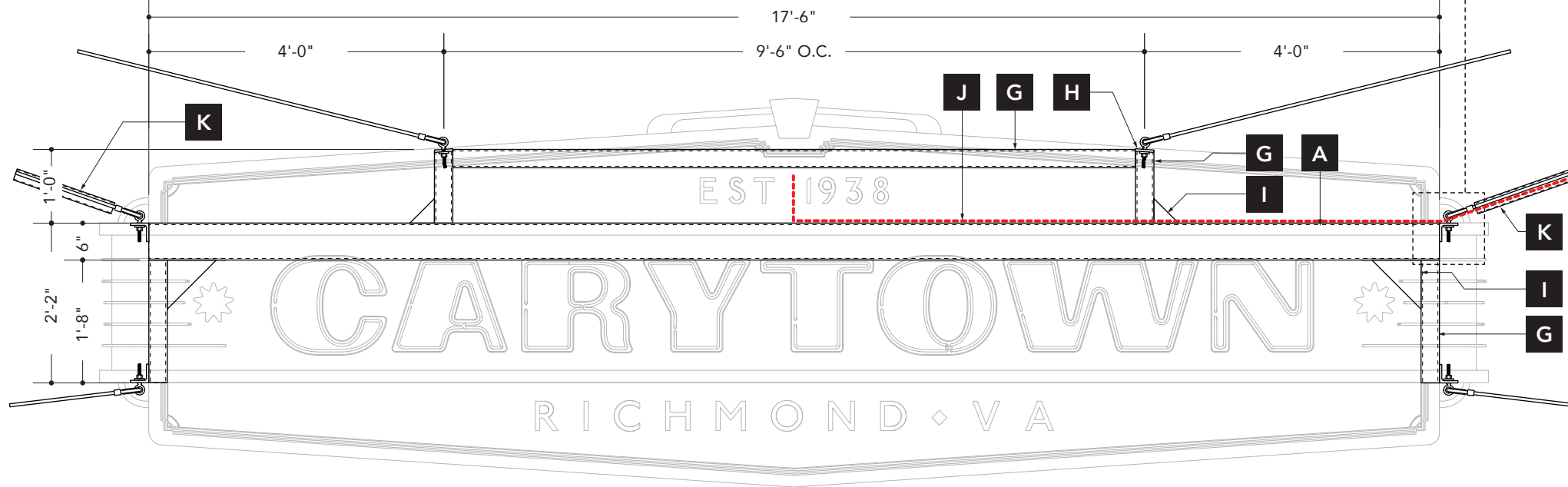
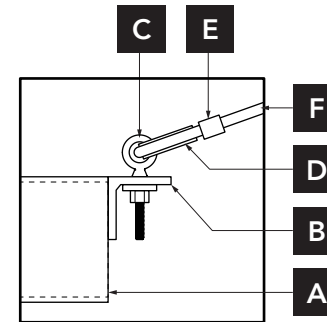
Project Manager: JI

Design/Technical: KRD

Date: 2/28/24

Specifications

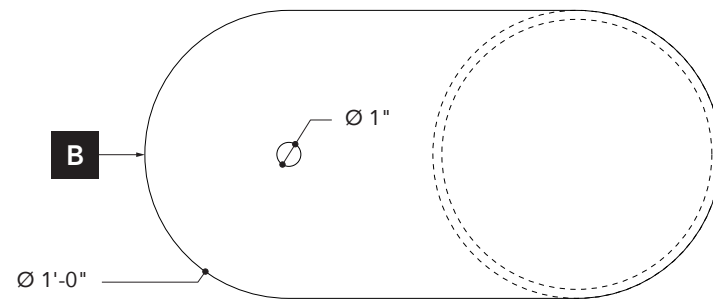
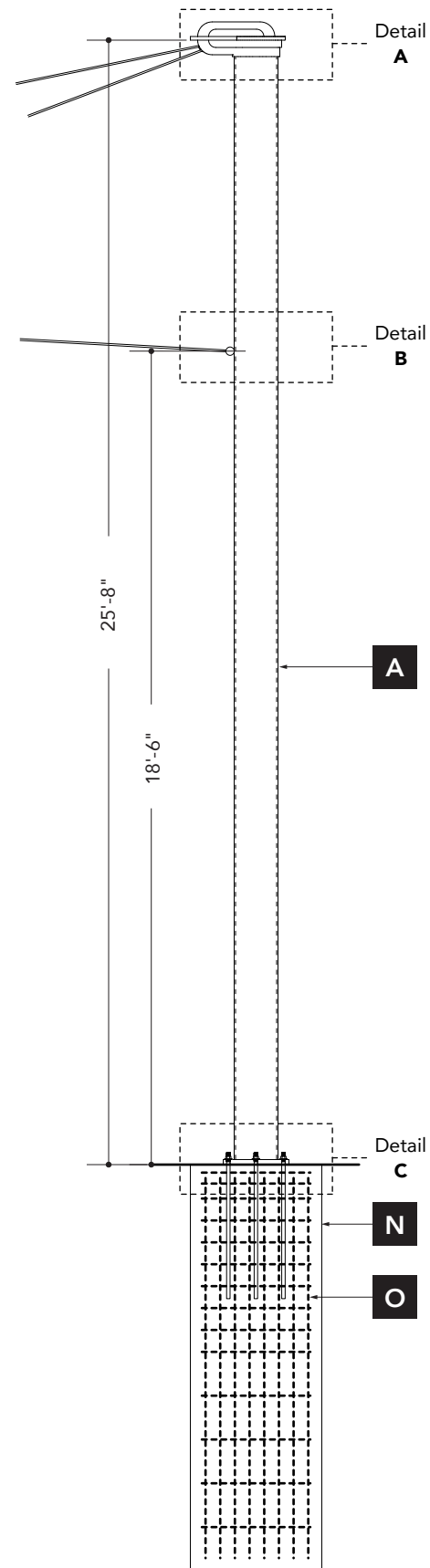
- A** Horizontal Support Tube
6" x 6" x 1/4" A500 Square Steel Tube
- B** Mounting Angle
3" x 3" x 3/8" A-36 Steel Angle
continuously welded to end of Support
Tube w/ 3/8" dia. drilled thru-hole for
Lifting Bolt
- C** 316 Stainless Steel Eyebolt
with Shoulder-for Lifting, 3/8"-16
Thread Size, 3" Thread Length
MMC#8891T52 w/ Nut + Washer(s)
as required
- D** Heavy Duty Wire Rope Thimble - for
Lifting 316 Stainless Steel, for 1/2"
Rope Diameter. MMC#3495T55
- E** Wire Rope Compression Sleeve-for
Lifting Tin-Plated Copper, for 1/2"
Diameter Stainless Steel Rope
MMC#3883T51
- F** Wire Rope
1/2" dia. 6x19 S.S. Wire Rope
- G** Support Tube
3" x 3" x 1/4" A500 Square Steel Tube
- H** Mounting Plate
3" x 3" x 3/8" Steel Plate continuously
welded to end of Vertical Tube
3/8" dia. drilled thru-hole for Lifting
Bolt
- I** Gusset
1/2" thk Steel Plate continuously welded
to Support Tubes
- J** Power Supply / Conduit
3/4" dia. liquidtight flexible conduit w/
277V Line Voltage, jumped from Street
Lights. Conduit to run from top of
Support Pole to Cabinet Interior with
min. 25' exposed whip at top of Pole.
- K** Decorative Sleeve
1-1/2" SCH 10 (1.90 OD x .109 wall x
1.682 ID) 304 Stainless Steel Pipe to
sleeve Conduit and Wire Rope



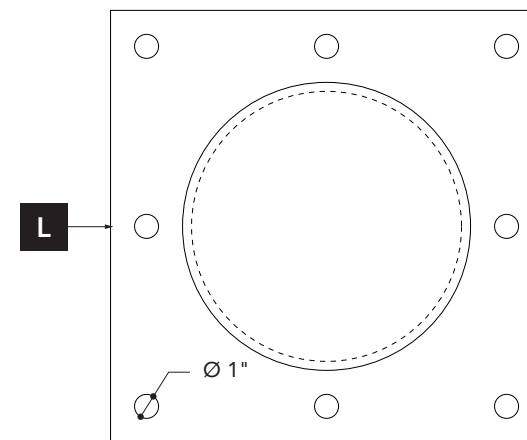
1 Vertical Cross-Section - Suspended ID - Structural Framework
Scale: 1/2" = 1'-0"

Section Dwg.

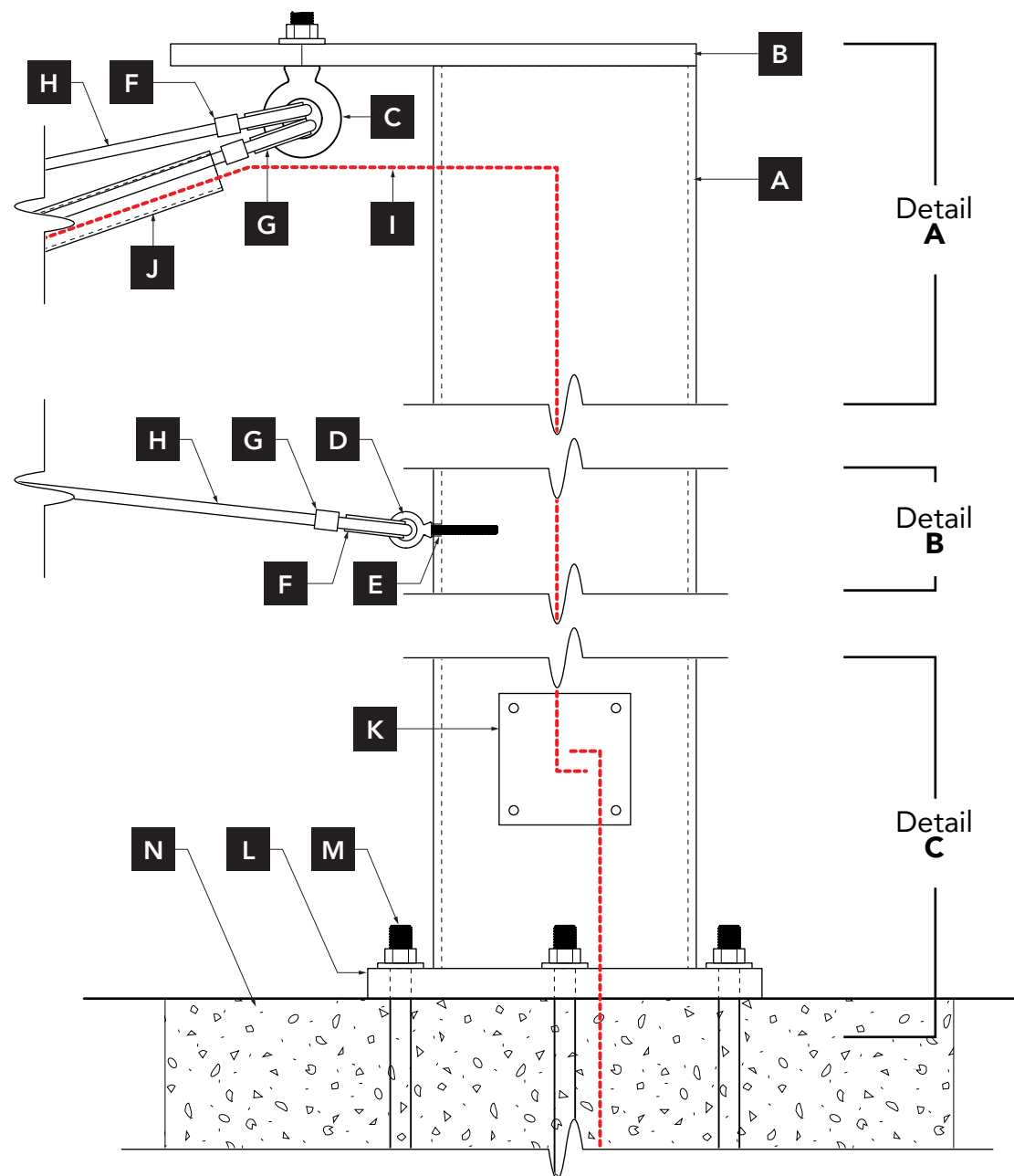
All concepts, ideas, design arrangements, or plans indicated or represented by these drawings which originate from Wellcraft MFG (or any portions thereof originating from Wellcraft MFG) are submitted in good faith and are to remain the sole property of Wellcraft MFG unless or until an express written agreement states that these rights are to transfer to the client (or other). No concepts, ideas, design arrangements, or plans shall be disclosed to any unauthorized person, firm, or corporation for any purpose without the written consent of Wellcraft MFG.



3 Mounting Plate - Plan View
Scale: 1 1/2" = 1'-0"



4 Base Plate - Plan View
Scale: 1 1/2" = 1'-0"



2 Vertical Cross-Section - Support Pole - Details
Scale: 1/4" = 1'-0"

Specifications

- A** Vertical Support Pole
12" Dia. x 3/8" Steel Pipe
- B** Mounting Plate
12" x 24" x 1" Steel Plate continuously welded to end of Support Pole w/ 1" dia. drilled thru-hole for Eyebolt
- C** 304 Stainless Steel Eyebolt with Shoulder-for Lifting, 1"-8 Thread Size, 2-1/2" Thread Length MMC#33045T85 w/ Nut + Washer(s) as required
- D** 316 Stainless Steel Eyebolt with Shoulder-for Lifting, 3/8"-16 Thread Size, 3" Thread Length MMC#8891T52 w/ Nut + Washer(s) as required
- E** 3/8"-16 Thread Drill + Tap Support Pole at lowest mount for Eyebolt Inset
- F** Heavy Duty Wire Rope Thimble - for Lifting 316 Stainless Steel, for 1/2" Rope Diameter. MMC#3495T55
- G** Wire Rope Compression Sleeve-for Lifting Tin-Plated Copper, for 1/2" Diameter Stainless Steel Rope MMC#3883T51
- H** Wire Rope
1/2" dia. 6x19 S.S. Wire Rope
- I** Power Supply / Conduit
3/4" dia. liquidtight flexible conduit w/ 277V Line Voltage, jumped from Street Lights. Conduit to run from top of Support Pole to Cabinet Interior with min. 25' exposed whip at top of Pole.
- J** Decorative Sleeve
1-1/2" SCH 10 (1.90 OD x .109 wall x 1.682 ID) 304 Stainless Steel Pipe to sleeve Conduit and Wire Rope
- K** Access Panel at Base of Support Pole
- L** 18" x 18" x 1 3/8" thk. Steel Base Plate continuously welded to end of Support Pole w/ drilled thru-holes @ 7 1/2" O.C. for Anchor Bolts
- M** 1" dia. Galvanized Steel Anchor Bolts w/ 36" min. embed into Footer
- N** Concrete Footer
36" dia. x 9'- 3" D, 2500 PSI
- O** Rebar
(2) #4 Ties, top 5"
#4 Ties @ 6" O.C., top 36"
#4 Ties @ 12" O.C., Remainder
(16) #8 Vertical Ties, 3" Clearance, Typ.



2115C N. Hamilton St
Richmond, VA 23230
804-918-2169
wellcraftmfg.com

Project:
Carytown

Number: 1852

Client: CMA

Project Manager: JI

Design/Technical: KRD

Date: 2/28/24

Section Dwg.

Page: 02

All concepts, ideas, design arrangements, or plans indicated or represented by these drawings which originate from Wellcraft MFG (or any portions thereof originating from Wellcraft MFG) are submitted in good faith and are to remain the sole property of Wellcraft MFG unless or until an express written agreement states that these rights are to transfer to the client (or other). No concepts, ideas, design arrangements, or plans shall be disclosed to any unauthorized person, firm, or corporation for any purpose without the written consent of Wellcraft MFG.

1 Vertical Cross-Section - Support Pole - Typical
Scale: 1/4" = 1'-0"