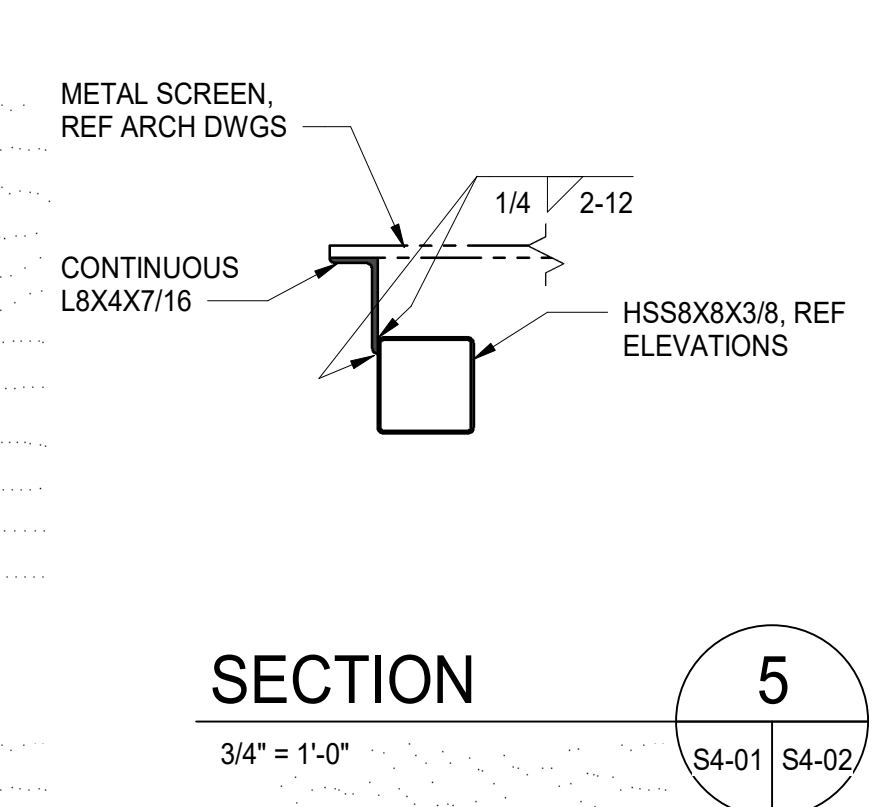
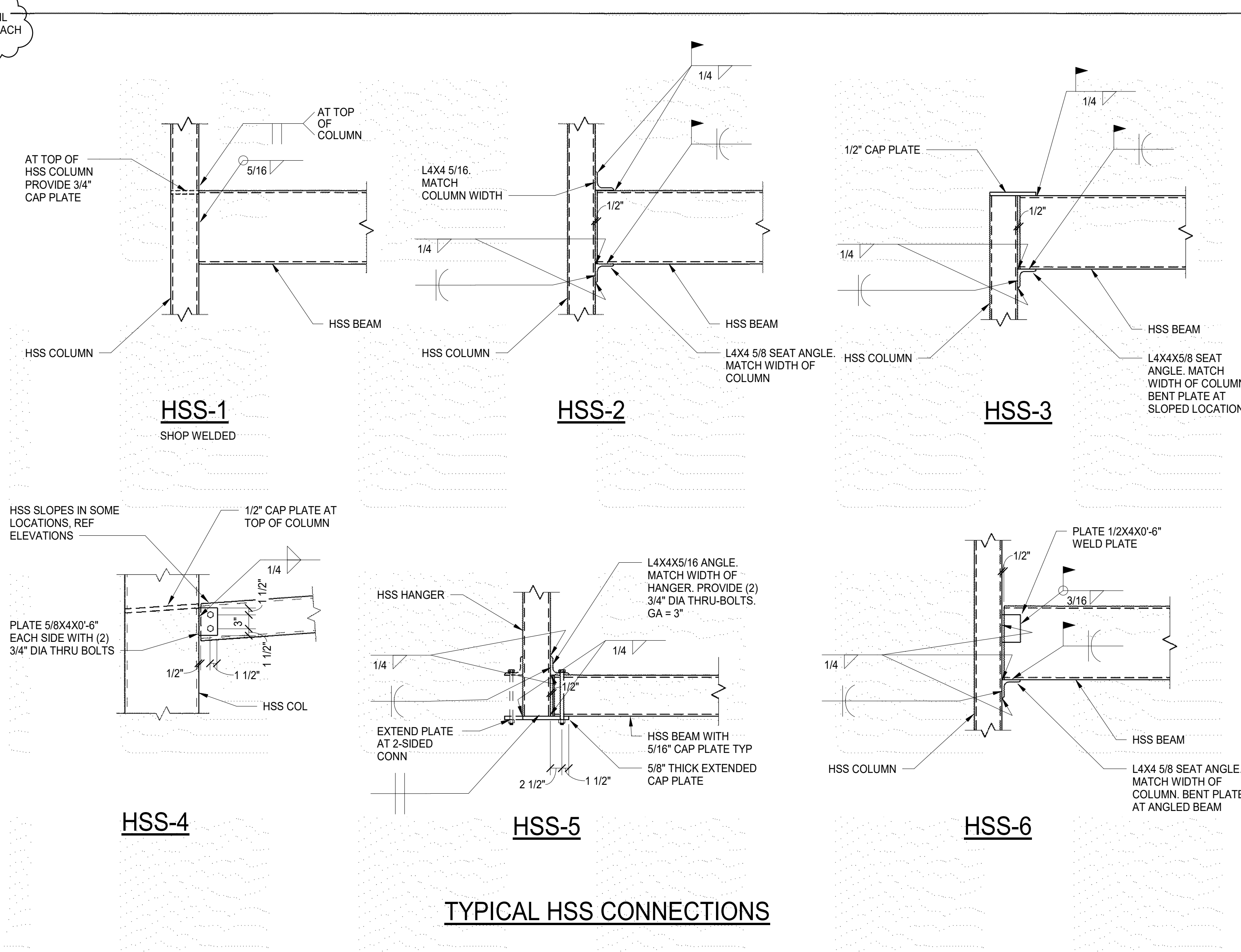
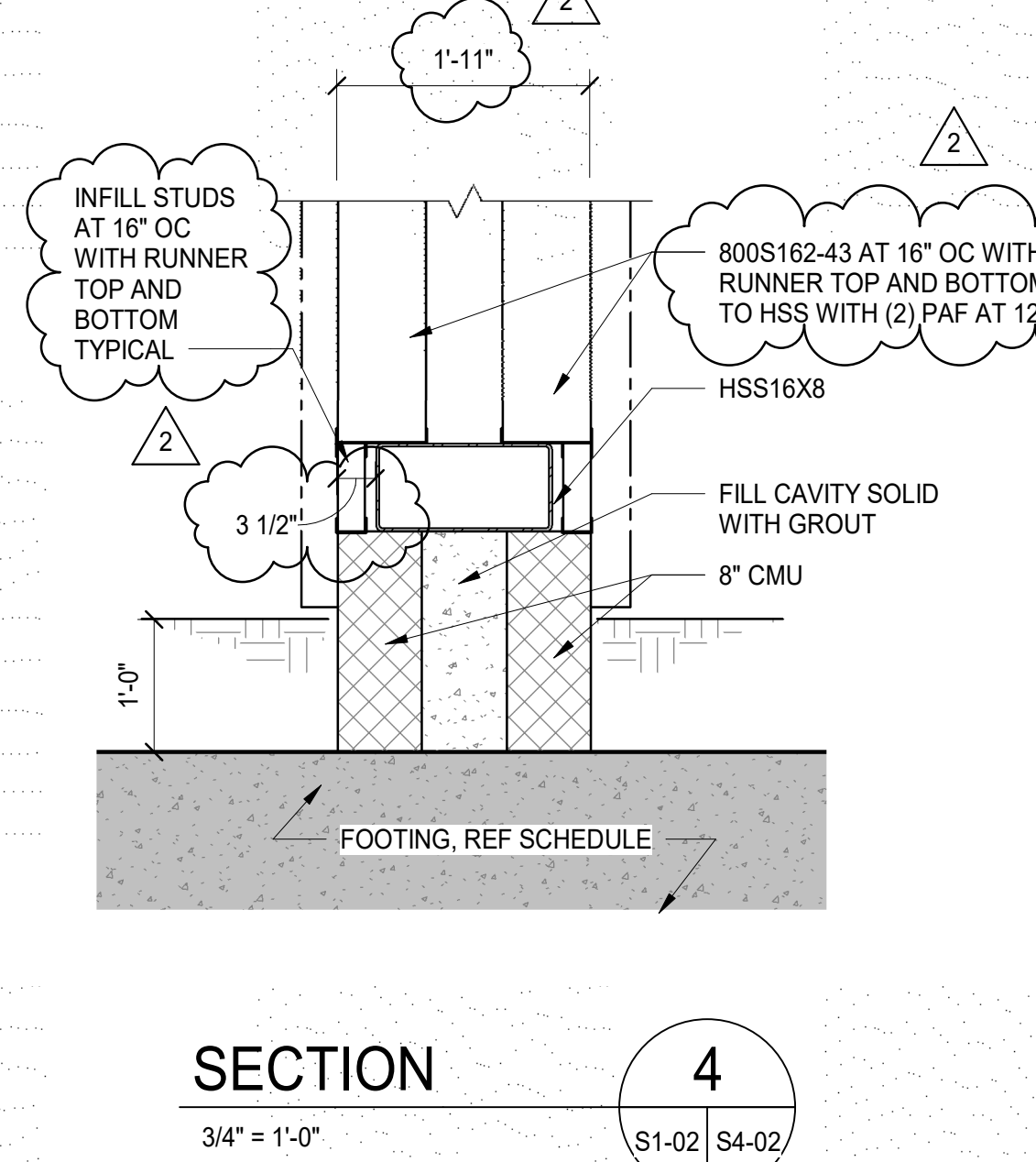
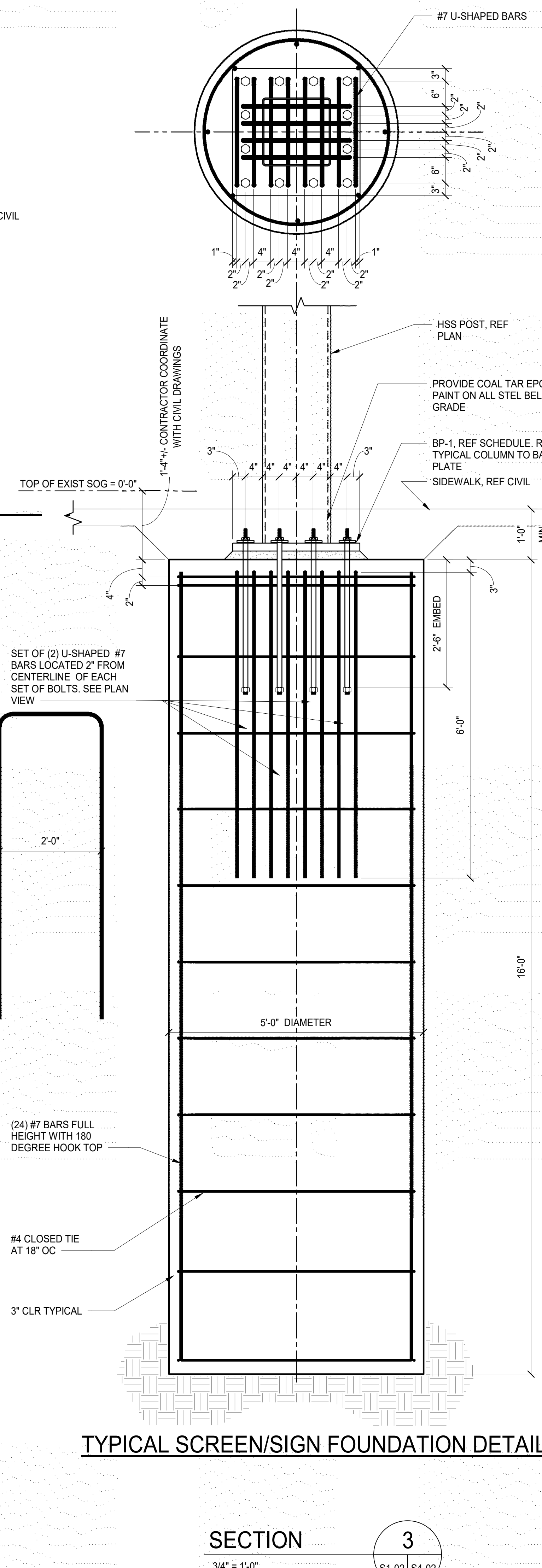
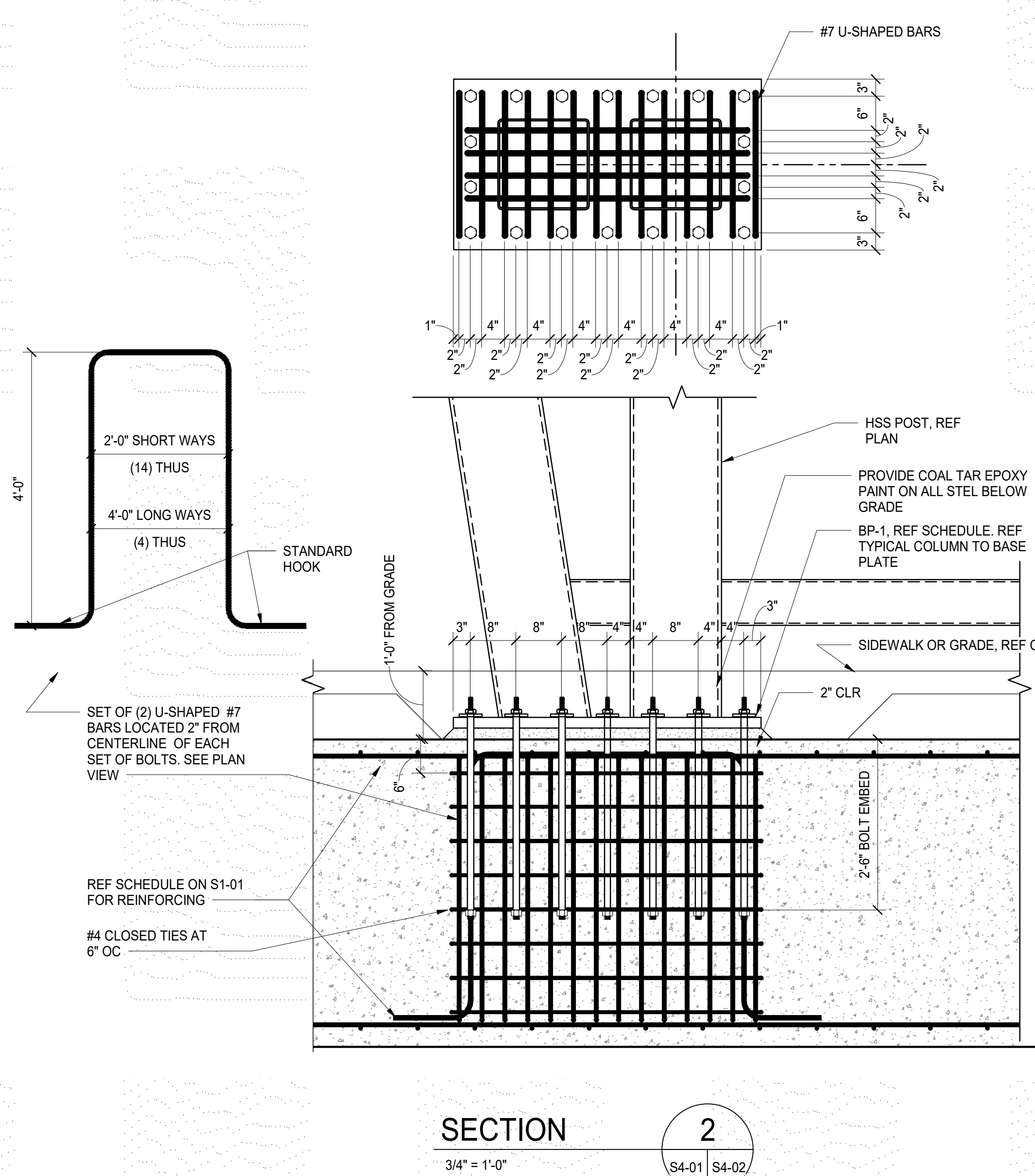
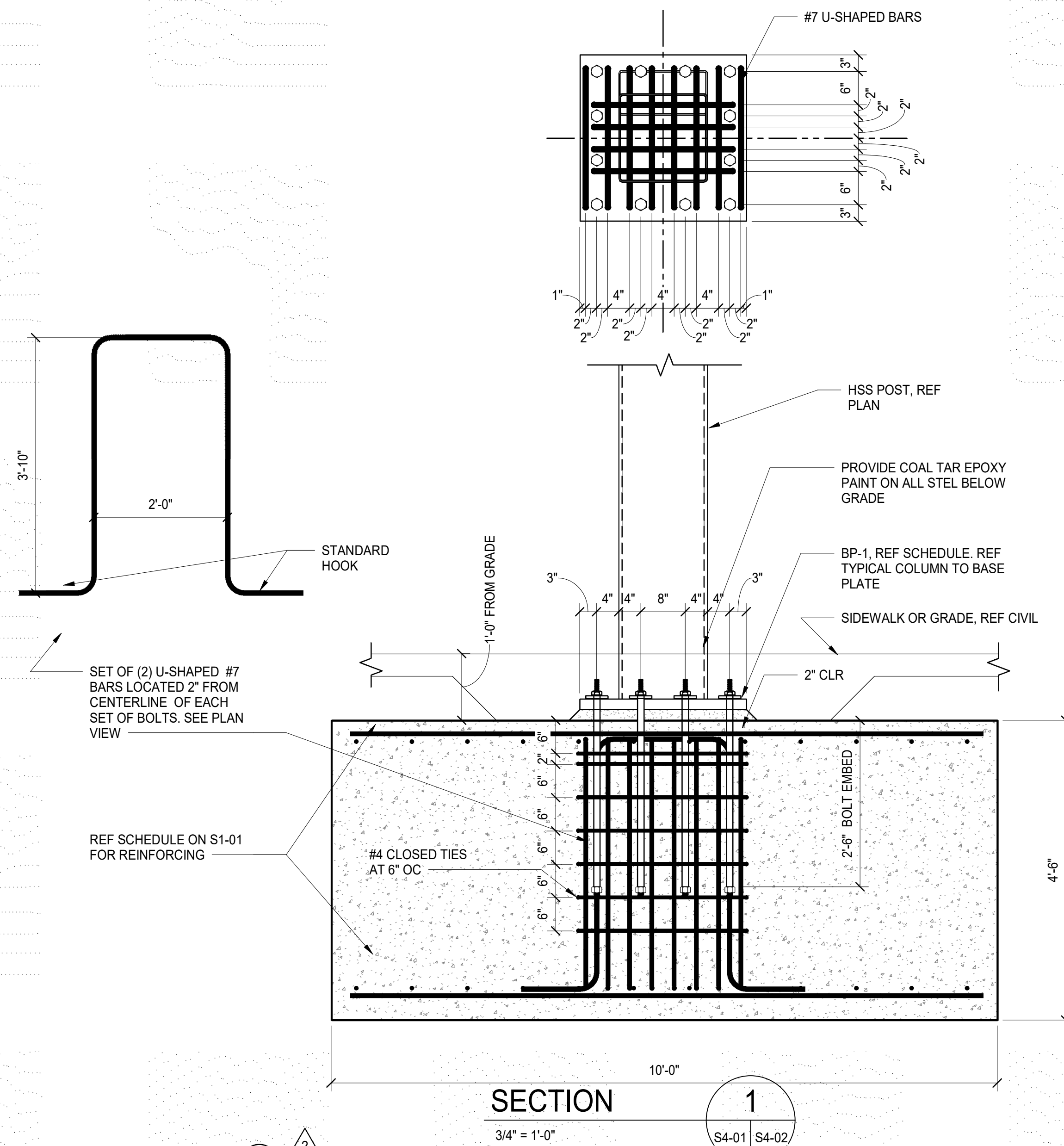
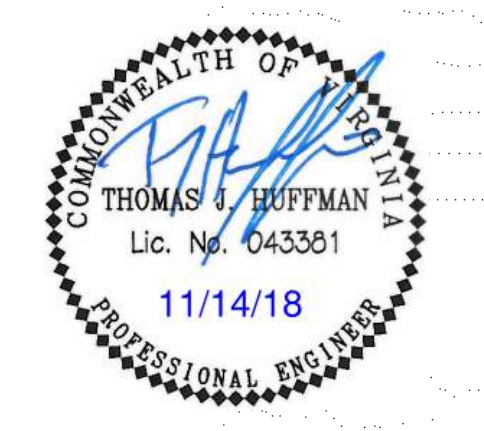


11/14/18 7:59:53 AM



**DUNBAR MILBY WILLIAMS
PITTMAN & VAUGHAN, PLLC**
CONSULTING STRUCTURAL ENGINEERS
1025 BOULDERS PARKWAY, SUITE 310
RICHMOND, VIRGINIA 23225-5549
PHONE (804) 232-0605 FAX (804) 272-3916
DWMV7_2025.DWG 1806-46

POPULOUS
Architecture
4800 Main St, Suite
816
Kansas City, Missouri
64112-1500
INTERIOR DESIGN
Commonwealth Architects
101 Shockoe Side, 3rd Floor
Richmond, Virginia 23219
(804) 648-5340
MEP ENGINEERING
ME ENGINEERS
14145 Denver West Parkway
Suite 301 Golden, CO 80401
(303) 421-6665
STRUCTURAL
DMVPV
1025 Boulders Parkway, Suite 310
Richmond, Virginia 23225
(804) 232-0606
IT/SECURITY/LIFE SAFETY
GHD
121 North 20th Street, Suite A
Richmond, Virginia 23223
(804) 234-0300
CIVIL
Resource International
9560 Kinross Charter Drive
Ashland, Virginia 23005
(804) 550-9200
FOOD SERVICE
Vista Products
328 North 18th Street
Richmond, Virginia 23223
(804) 643-9991
GENERAL CONTRACTOR
CK Besworth Construction, LLC
1500 Hazenwood Rd., Suite 101
Midlothian, VA 23113
804 897-3838

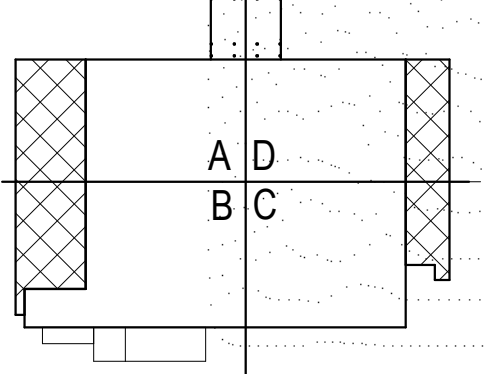


RICHMOND MIDLOTHIAN OTB
6807 Midlothian Turnpike
Richmond, VA, 23225

Construction Documents

SEPTEMBER 21, 2018

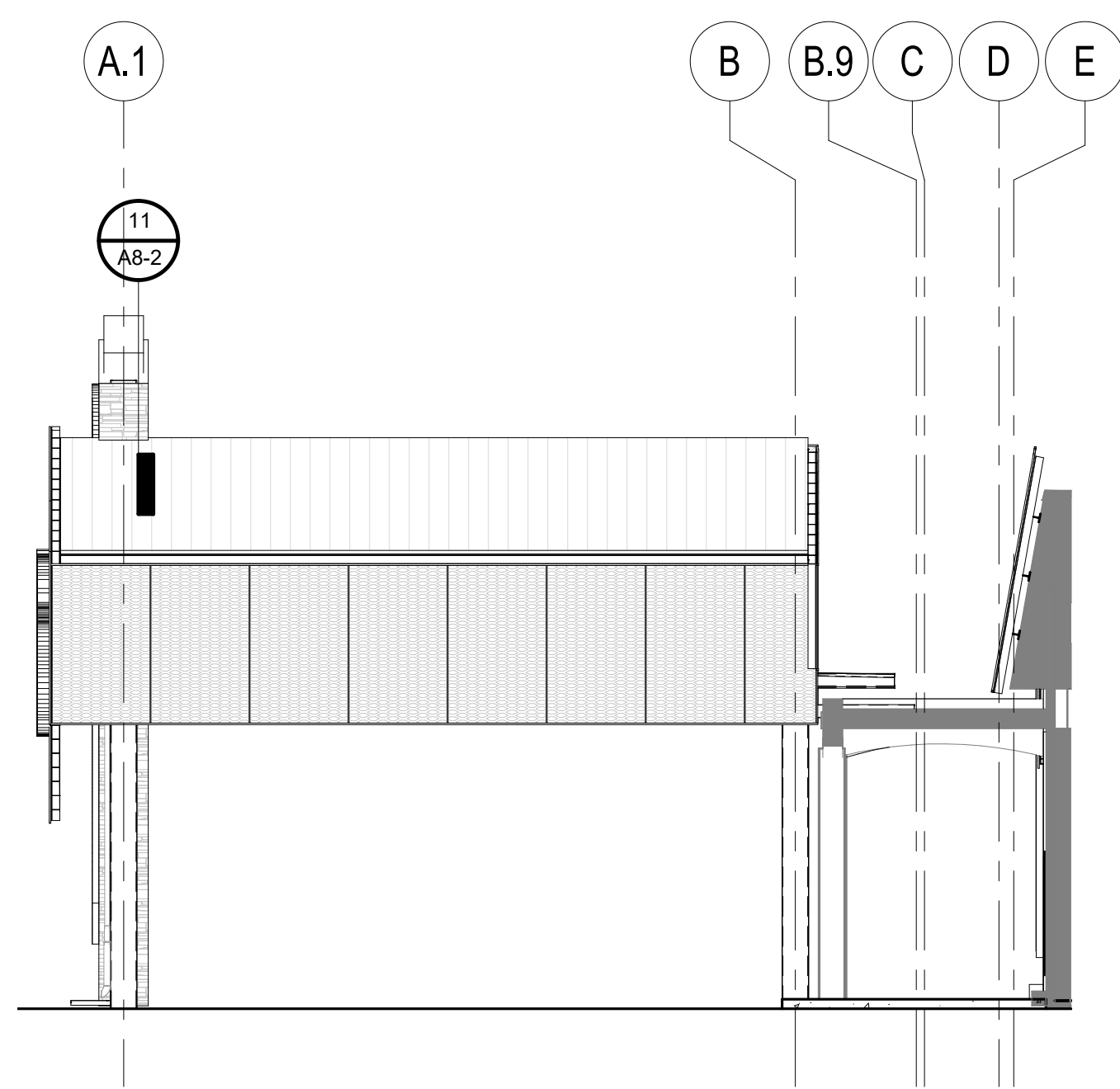
REVISIONS			
NO.	DATE	DESCRIPTION	BY
1	10/16/18	ADD/1	
2	11/14/18	CODE COMMENTS RESPONSE 2	



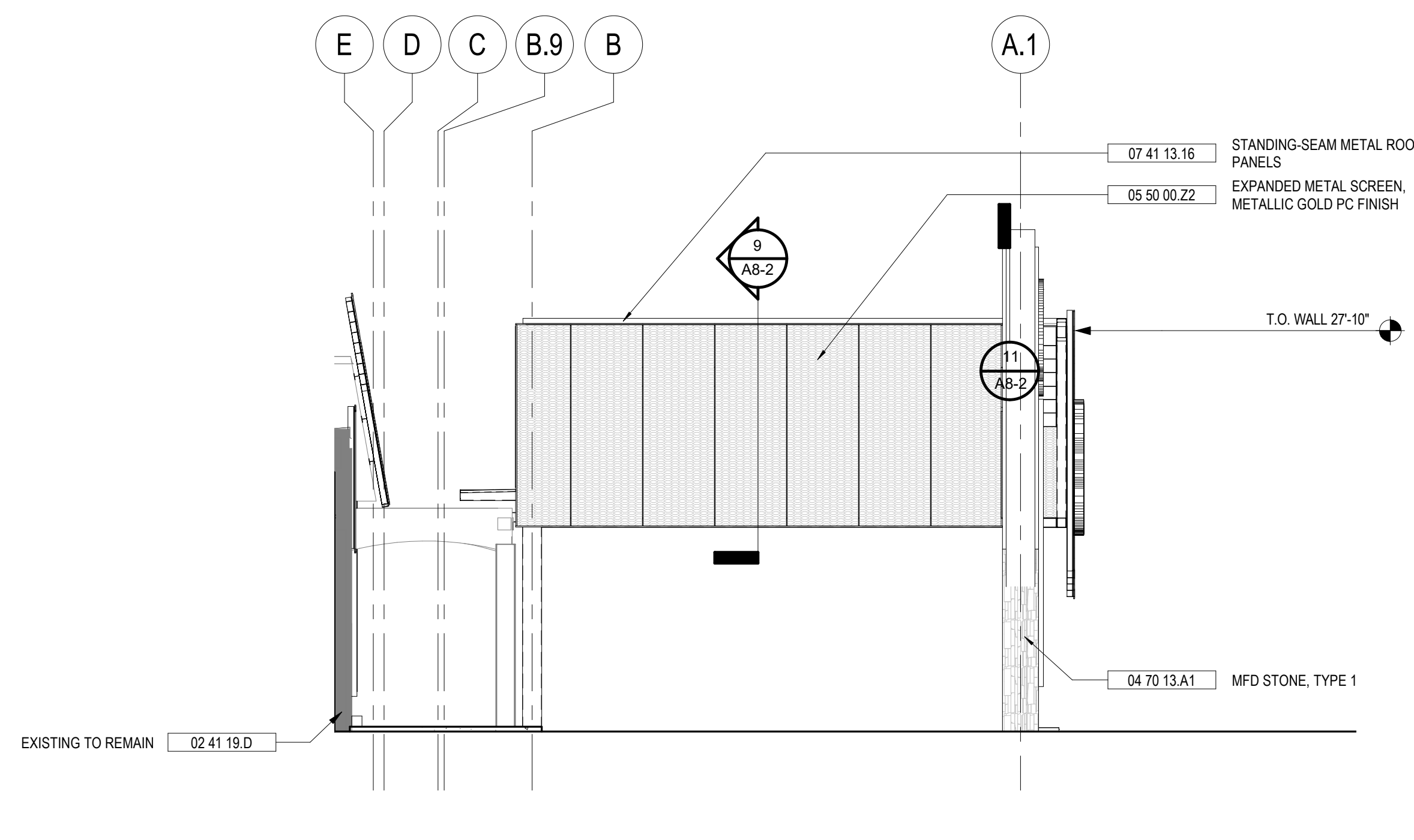
PROJECT 18.4696 ISSUED BY **POPULOUS**
ISSUED 10/16/18

SIGN SECTIONS AND DETAILS

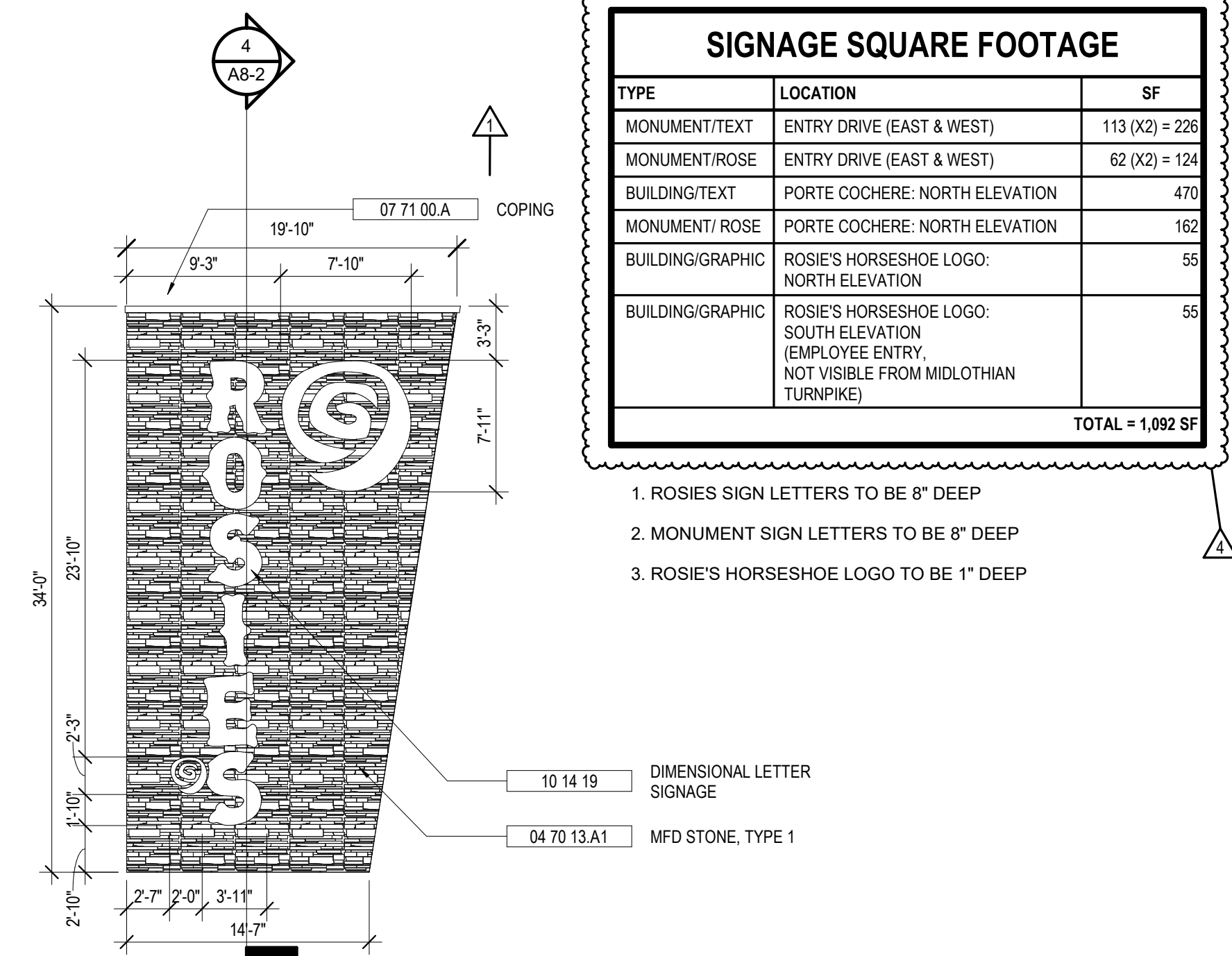
S4-02



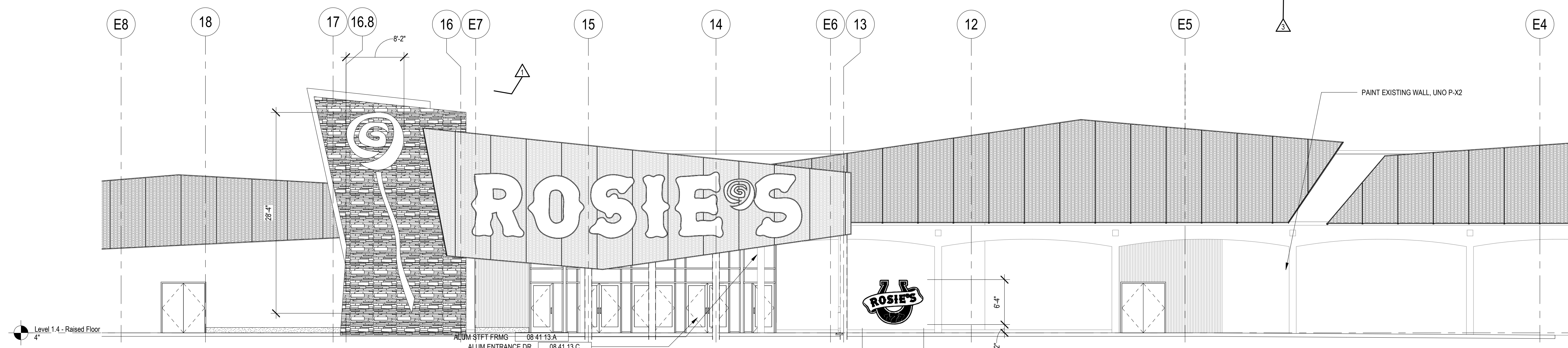
6 PORTE COCHERE - EAST ELEVATION
1/8" = 1'-0"



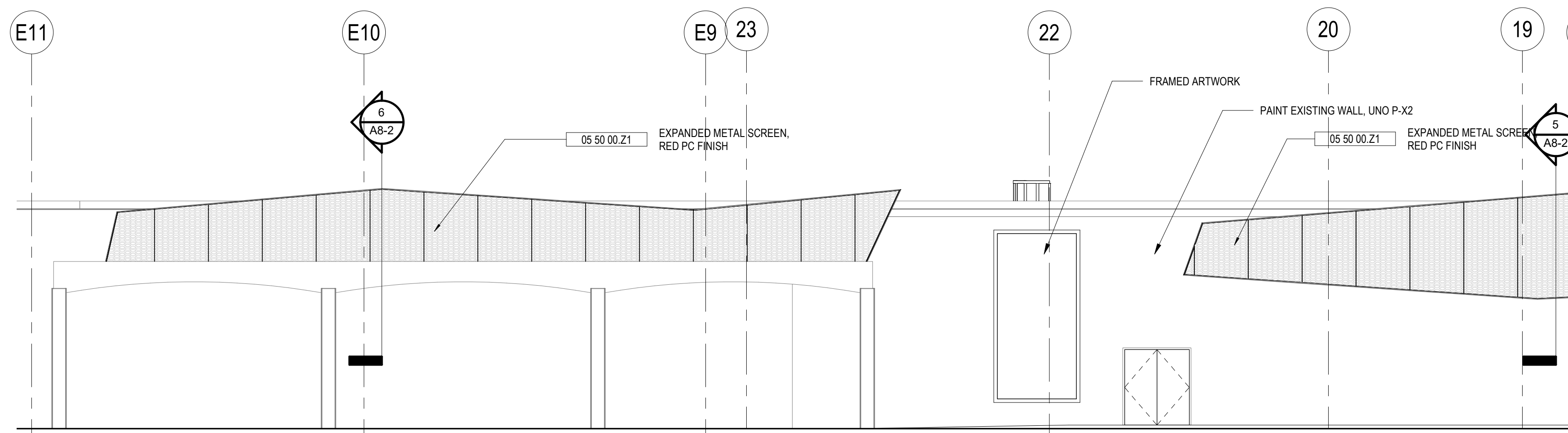
5 PORTE COCHERE - EAST ELEVATION
1/8" = 1'-0"



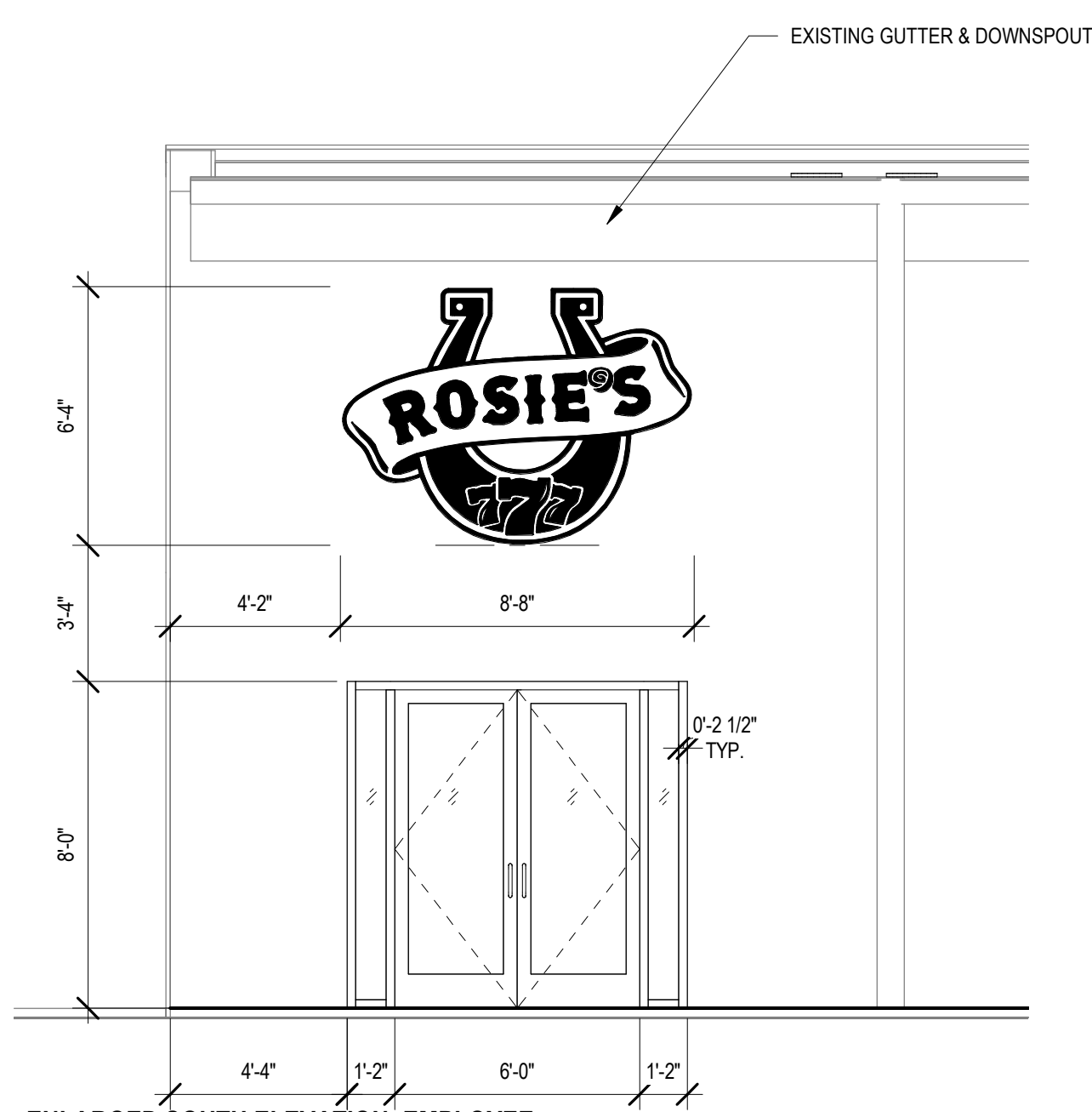
4 MONUMENT SIGNAGE-EAST ELEVATION
1/8" = 1'-0"



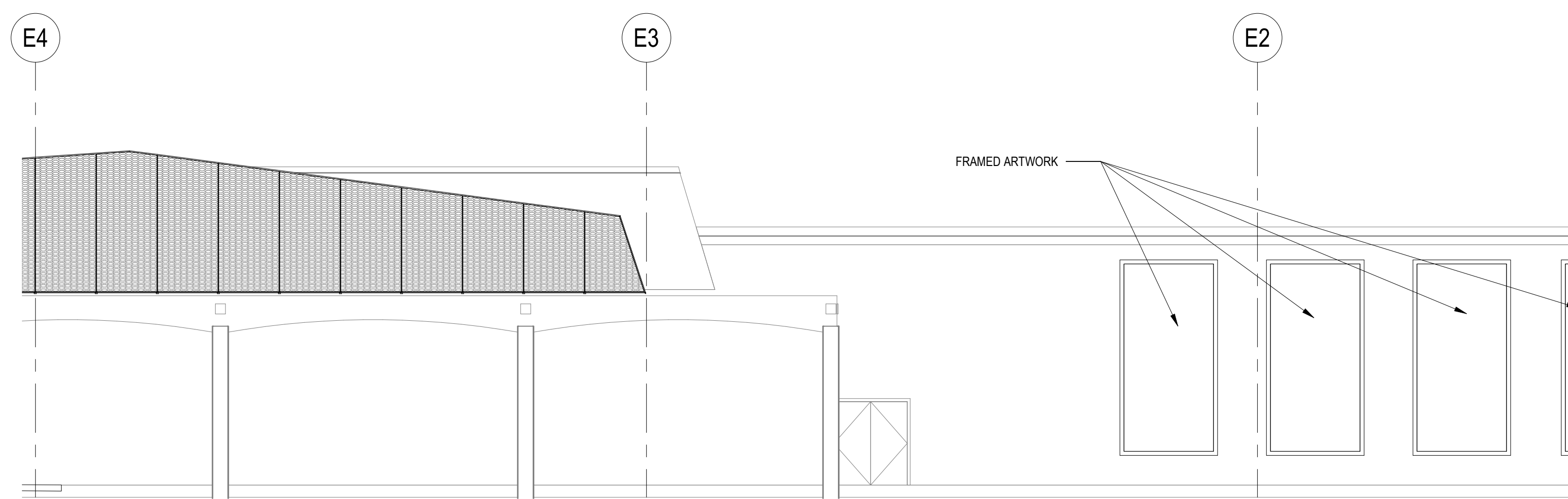
3 PORTE COCHERE - NORTH ELEVATION
1/8" = 1'-0"



2 ENLARGED ELEVATION - PC2
1/8" = 1'-0"

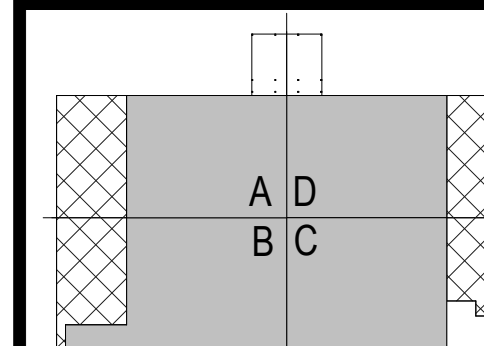


7 ENLARGED SOUTH ELEVATION-EMPLOYEE ENTRANCE
1/4" = 1'-0"

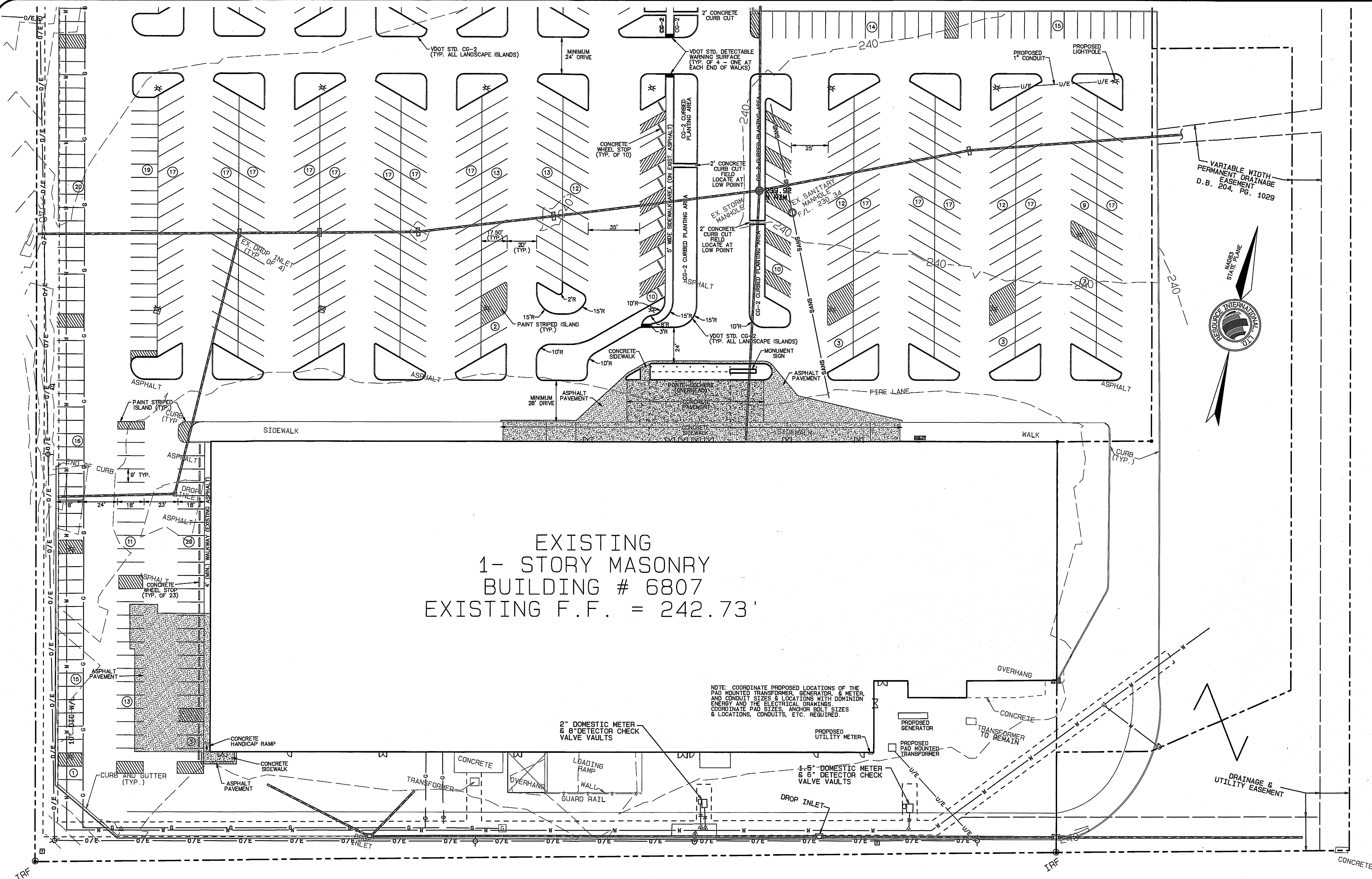


1 FUTURE TENANT ENTRY - NORTH ELEVATION
1/8" = 1'-0"

REVISIONS		
NO.	DATE	DESCRIPTION
1	11/14/2018	Code Comments Response 2
2	12/04/2018	Addendum #2
3	12/07/2018	Code Comments MEP
4	01/29/2019	Addendum #6



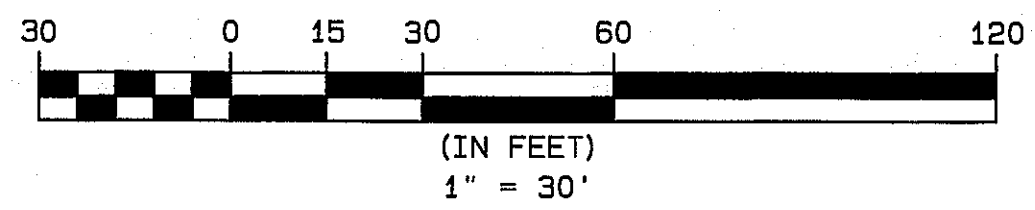
9/25/2018 09:45:24M
 H:\218011.02 POPPIUS OTB Midlothian SITE PLAN\MIDLOTHIAN PARKING.DWG



EXISTING
 1- STORY MASONRY
 BUILDING # 6807
 EXISTING F.F. = 242.73'

NOTE: COORDINATE PROPOSED LOCATIONS OF THE PAD MOUNTED TRANSFORMER, GENERATOR, & METER, AND CONDUIT SIZES & LOCATIONS WITH ADMININ ENERGY AND THE ELECTRICAL DRAWINGS. COORDINATE PAD SIZES, ANCHOR BOLT SIZES & LOCATIONS, CONDUITS, ETC. REQUIRED.

- NOTES:
1. SET ALL TOPS OF CURBS AT +0.50' ABOVE EXISTING GRADE UNLESS OTHERWISE SHOWN.
 2. SEE SHEET C-5 FOR SIGNAGE & PAVEMENT MARKINGS.
 3. SEE SHEET C-7 FOR PAVEMENT DETAILS.
 4. UNDERCUT ALL LANDSCAPED ISLANDS 10" - FILL WITH 6" (MIN.) TOPSOIL. SEE THE LANDSCAPE PLAN(S).
 5. ISLANDS SHALL BE MULCHED OR LANDSCAPED. SEE THE LANDSCAPE PLAN(S).



resource INTERNATIONAL
 P.O. Box 6160 • 9560 Kings Charter Drive • Ashland, VA 23005
 (804) 550-9200 • FAX (804) 550-9259

DESIGNED: JMS
 DRAWN: JMS
 CHECKED: SB
 DATE: 9/21/2018

REVISIONS:

COLONIAL DOWNS GROUP, LLC.
 SITE PLAN AMENDMENT DRAWINGS
 PARKING REVISIONS
 MIDLOTHIAN TURNPIKE SITE
 CITY OF RICHMOND, VIRGINIA

PROJECT NO.: 218011.01
 SHEET: C-3

LAYOUT PLAN - 2



ROSIE'S





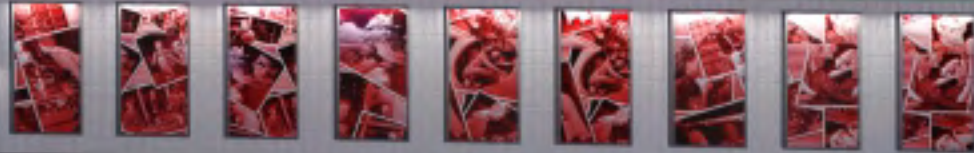
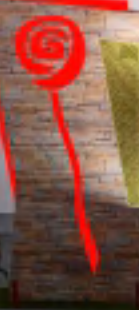
ROSIE'S







ROSIE'S







ROSIE'S

