

Good Morning members of the Urban Design Committee; I am Stephen Willoughby, Director of Emergency Communications for the City. Today I am representing the 26 agencies that operate on the city's radio system. These agencies include Police, Fire, Richmond Ambulance, Public Works, Public Utilities and Richmond Public Schools. Thank you for the opportunity to address with you the planned public safety communication system that represents three new tower sites to be constructed on city properties. I am joined today by the Richmond Project Team, our project consultants; Altairis Technology Partners, and the system vendor, Motorola Solutions Inc.

Today, the City of Richmond and our regional partners in Henrico and Chesterfield Counties have a truly interoperable land mobile radio system which allows public safety assets to seamlessly traverse radio systems in the metro Richmond area. It allows public safety assets to communicate with each other on shared interoperability talkgroups in a routine and simple manner. Over time this need has grown due to world events which clearly show that crime and other public safety emergencies do not respect jurisdictional boundaries.

Our current system has been in service since 1998. While this has served as a robust and reliable system to-date, it has reached its end of life and as such, the region is currently in year four of our replacement planning and project development. This planning process included a thorough needs assessment which helped us identify the needed capabilities of a new land mobile radio system which would not only service our needs today, but service the needs of the City for the next 20 years. After the needs assessment was developed, the region, along with our consultants, developed a Request for Proposal which encompassed over 6500 technical specifications. The development of the RFP was a yearlong process and another full year to review the vendor proposal and negotiate a satisfactory contract with the successful vendor, Motorola Solutions.

A major portion of our technical specifications for this next generation radio system related to coverage level requirements. These coverage specifications required optimum ability for first responders to communicate anywhere in the city and took into account the heavier building materials used today in building construction, critical buildings (such as schools) and the rolling terrain. This new coverage will ensure that a firefighter will be able to communicate in a basement of a burning building and a police officer to communicate in a public school facility during an active incident. Other city services such as general government and schools will benefit from the City building this public safety grade system.

To meet the stringent coverage requirements dictated by our RFP, Motorola originally proposed a 9-tower site system. Through a series of detailed coverage design workshops, our

consulting team, the City's Project team, and Motorola arrived at a seven-site design which leveraged our existing three tower locations, a public/private partnership for one tower and three on City owned property – these are the three sites that are before you today.

The three new tower locations for your consideration today combined with the four existing structures comprise our contracted seven site system which will serve the needs of public safety radio communications for the next two decades. Each of these sites – collectively delivers critical coverage in the overall design of the simulcast system.

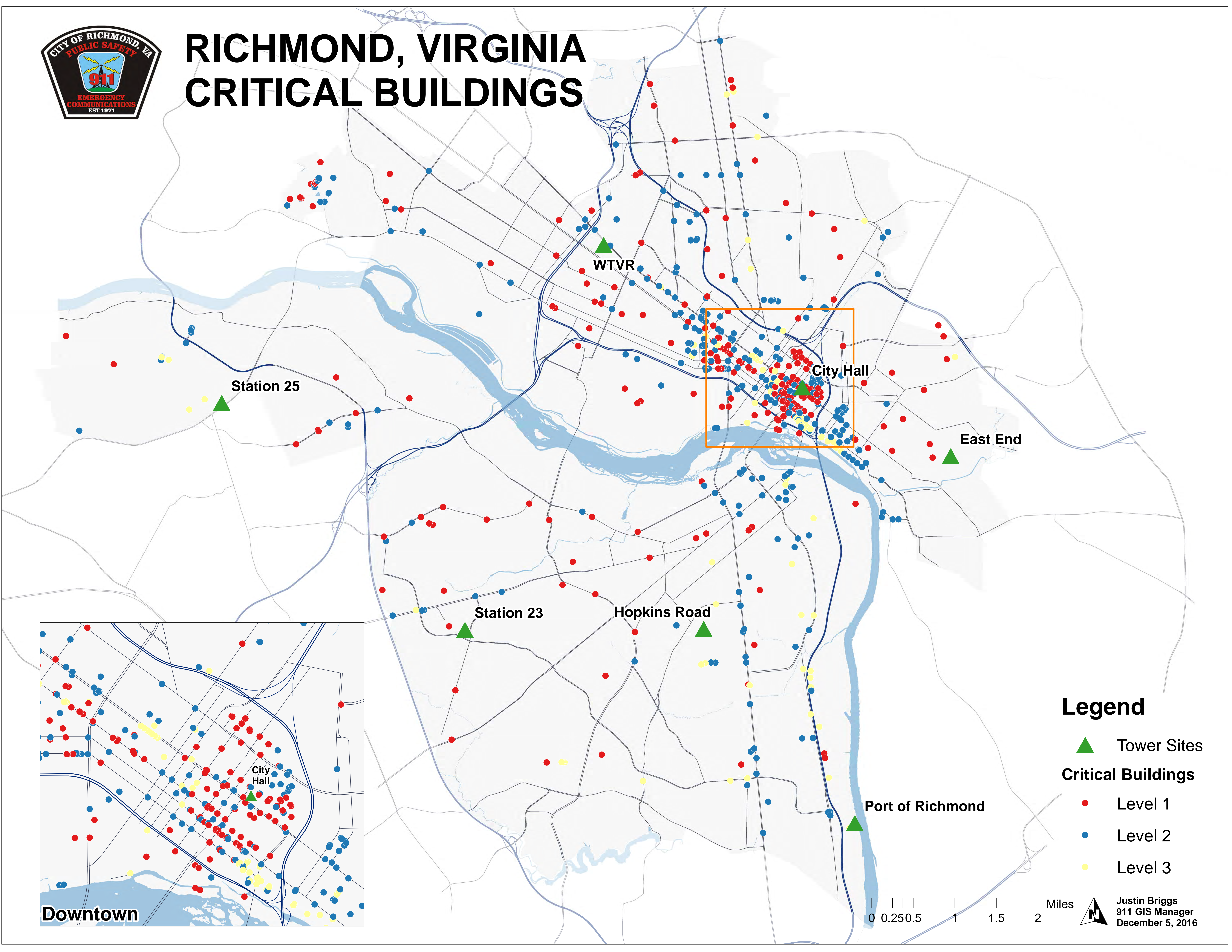
All of the seven sites, including the three before you today are critical elements to not only the City's operations, but are critical elements to the 52 sites that make up the regional radio system that allow interoperability and redundancy throughout the Richmond Capital Region.

This concludes my summary of the project. My team and I will be glad address any questions which the Committee may have regarding the radio system project and we are prepared to address specific questions or comments as part of the individual site discussions/

At this time I will introduce the city's partner in the critical project Motorola Solutions. Their Project Manager, Mark Brummell, who is assigned to the city's project will walk the committee through the three sites proposed and for your consideration today.



RICHMOND, VIRGINIA CRITICAL BUILDINGS



WTVR

Station 25

City Hall

East End

Station 23

Hopkins Road

Port of Richmond

Downtown

Legend

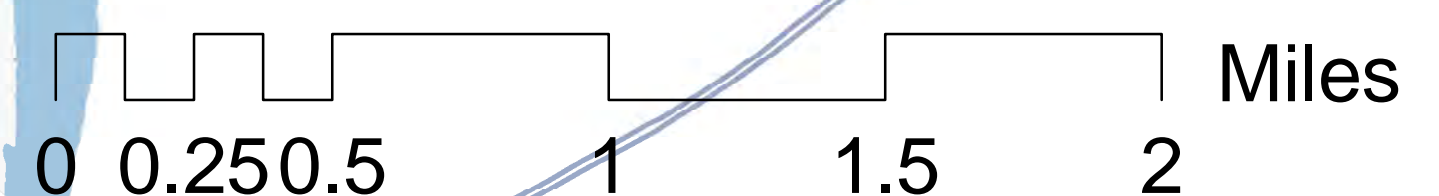
▲ Tower Sites

Critical Buildings

● Level 1

● Level 2

● Level 3



Justin Briggs
911 GIS Manager
December 5, 2016

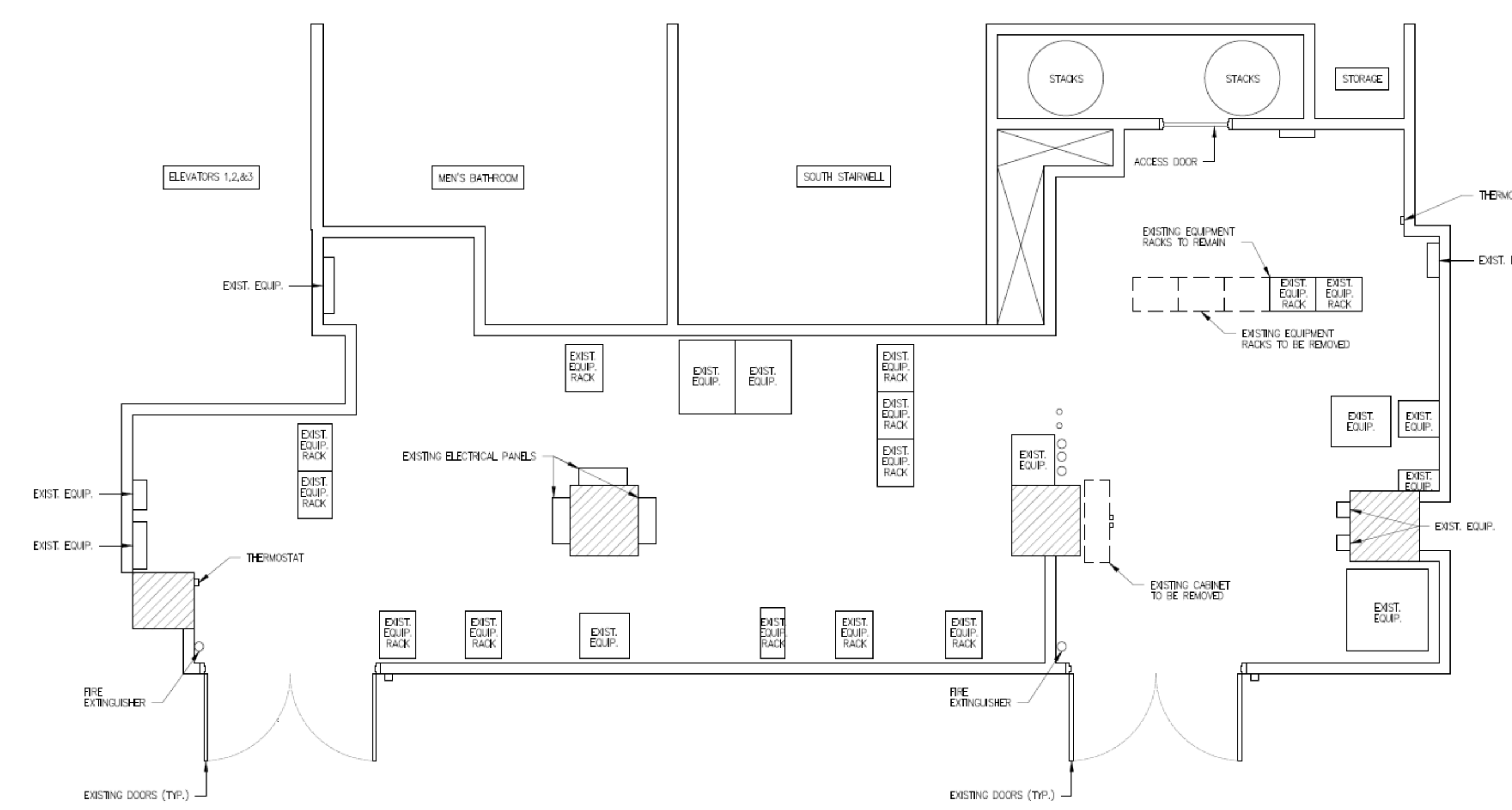
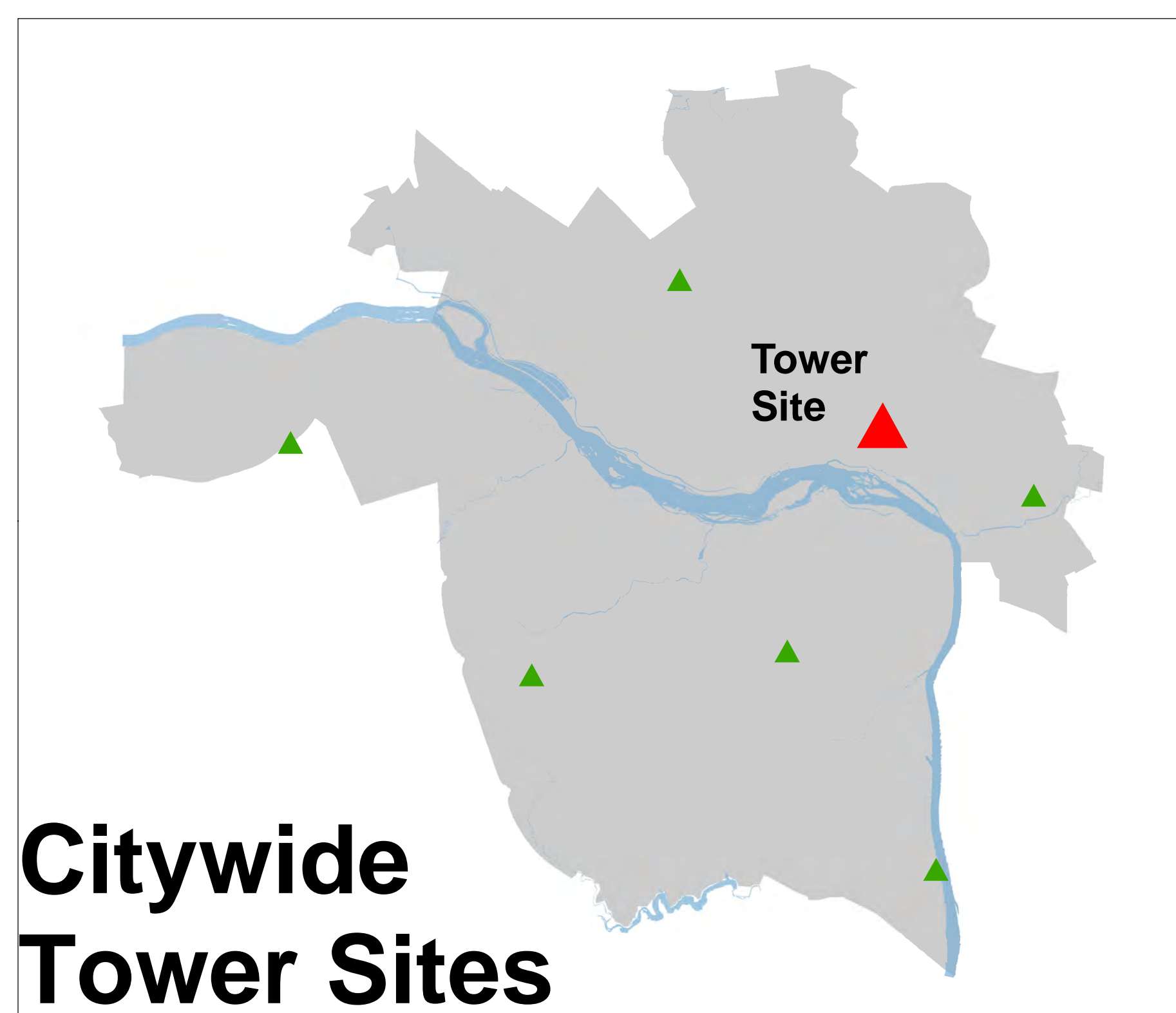
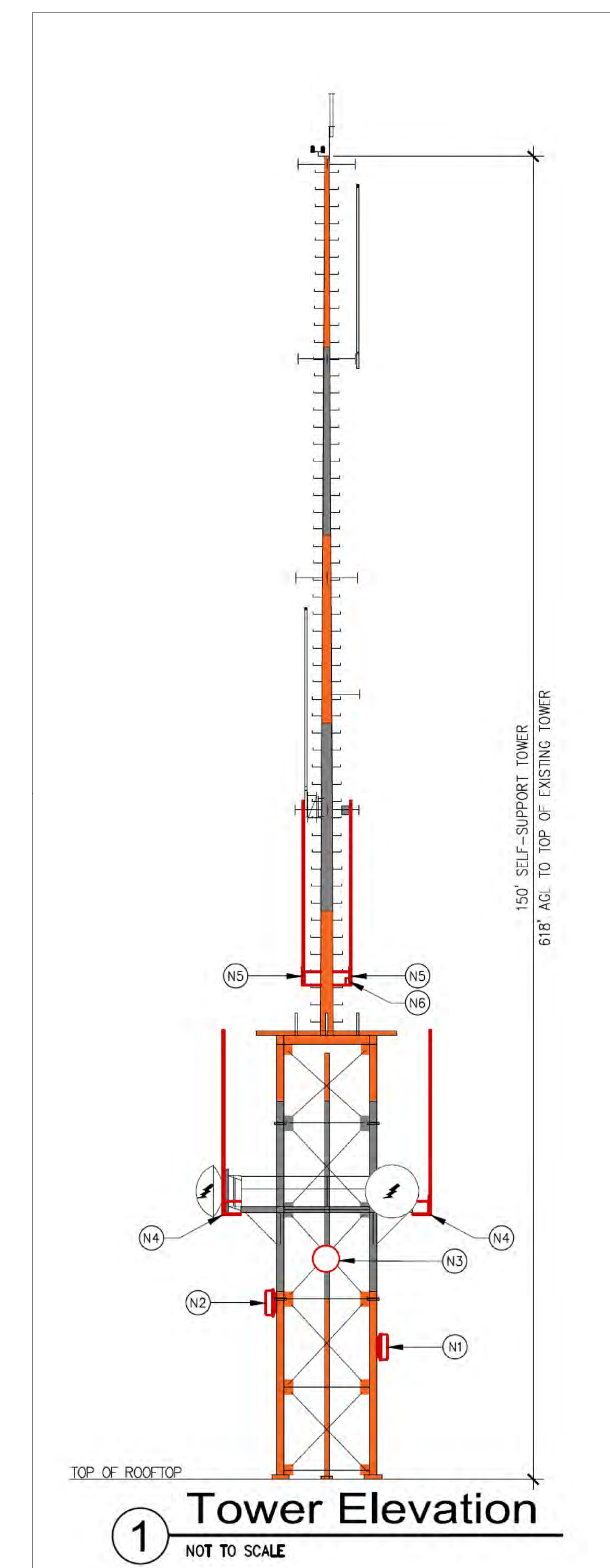


City Hall Radio Tower

900 E. BROAD STREET, RICHMOND, VA 23219

Legend

- Tower Site
- Structures
- Address
- Richmond Property
- Parcels



Justin Briggs
911 GIS Manager
December 5, 2016

Disclaimer: The City of Richmond assumes no liability either for any errors, omissions, or inaccuracies in the information provided regardless of the cause of such error or omission, or for any actions taken by the user in reliance on the information provided herein.

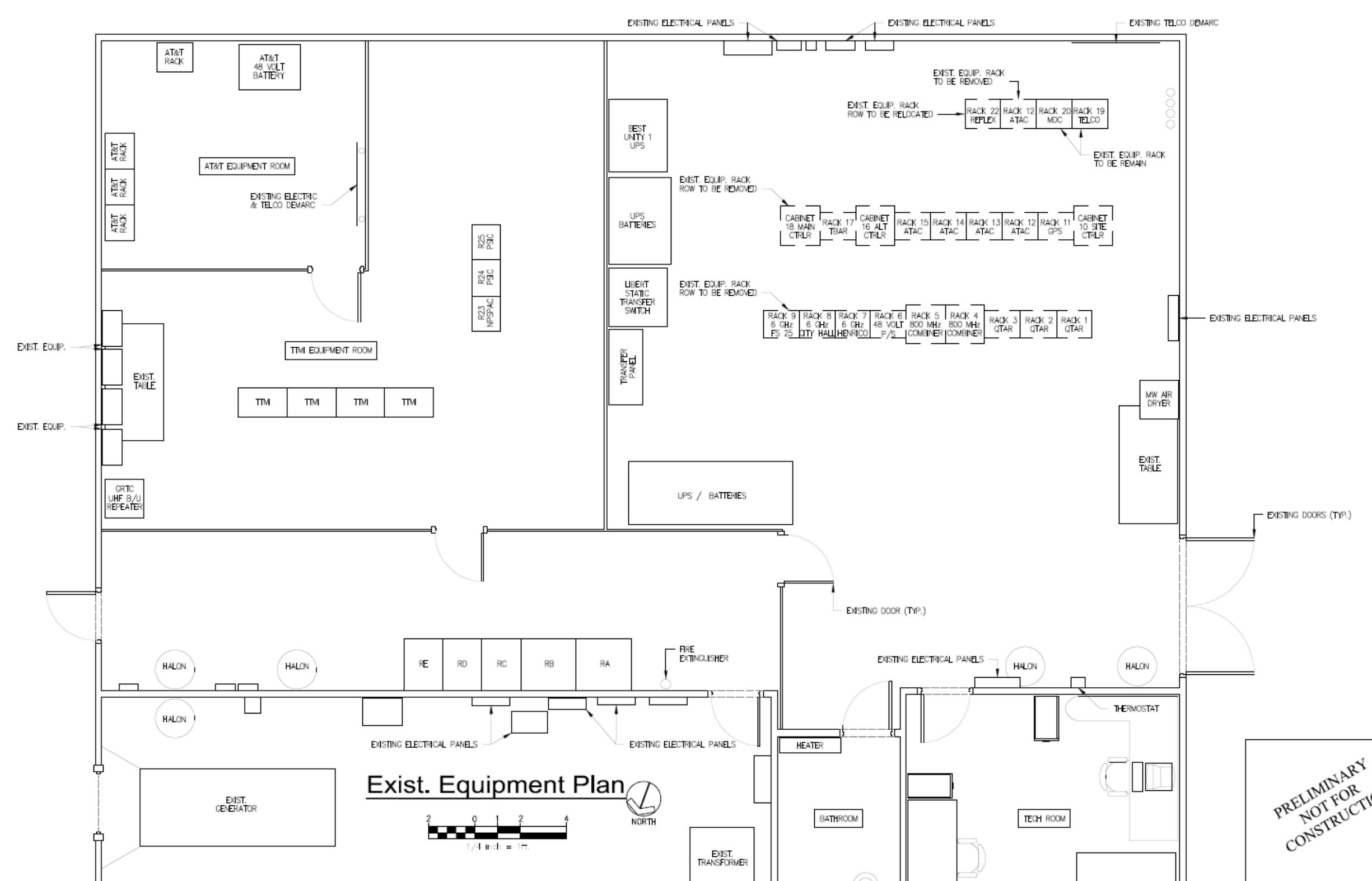
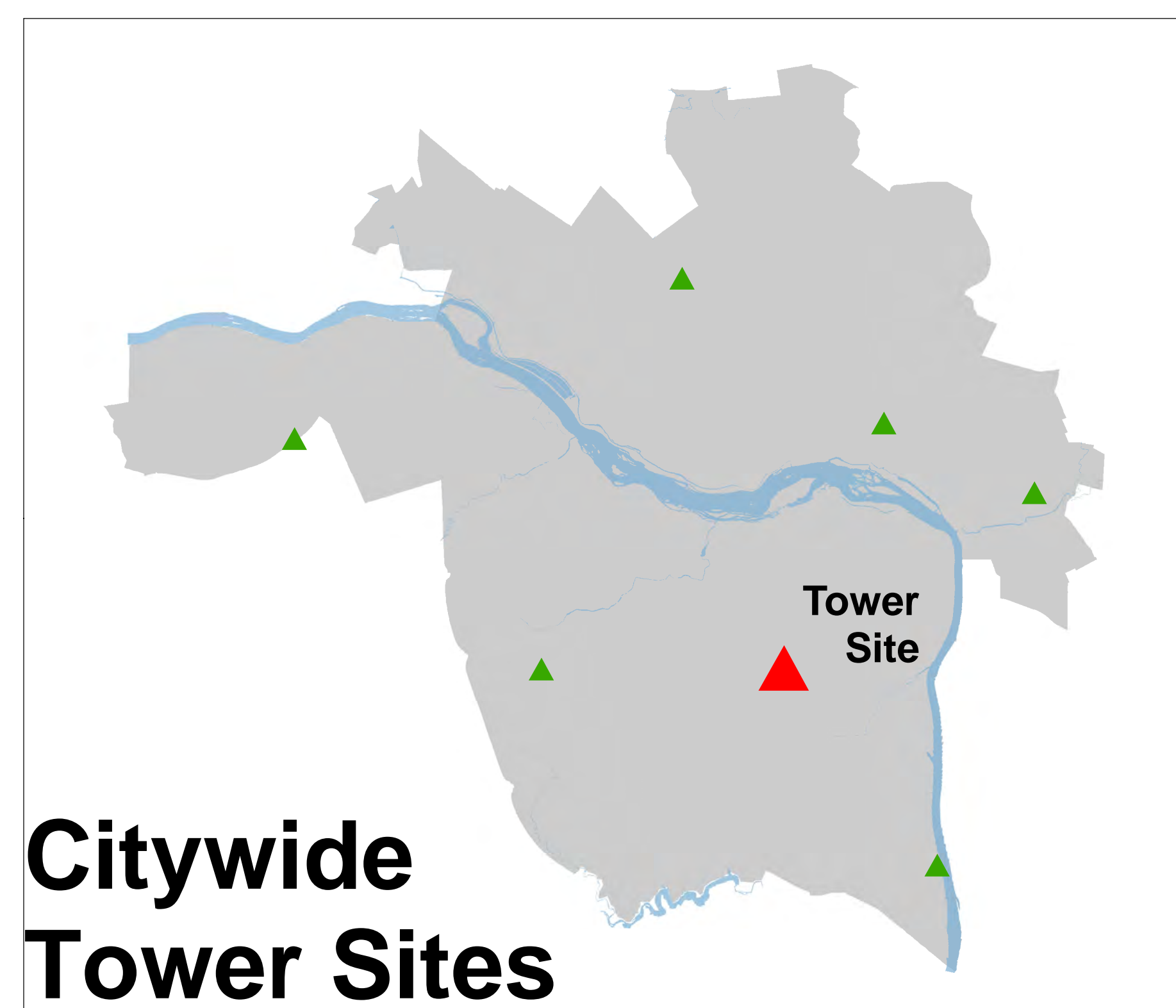
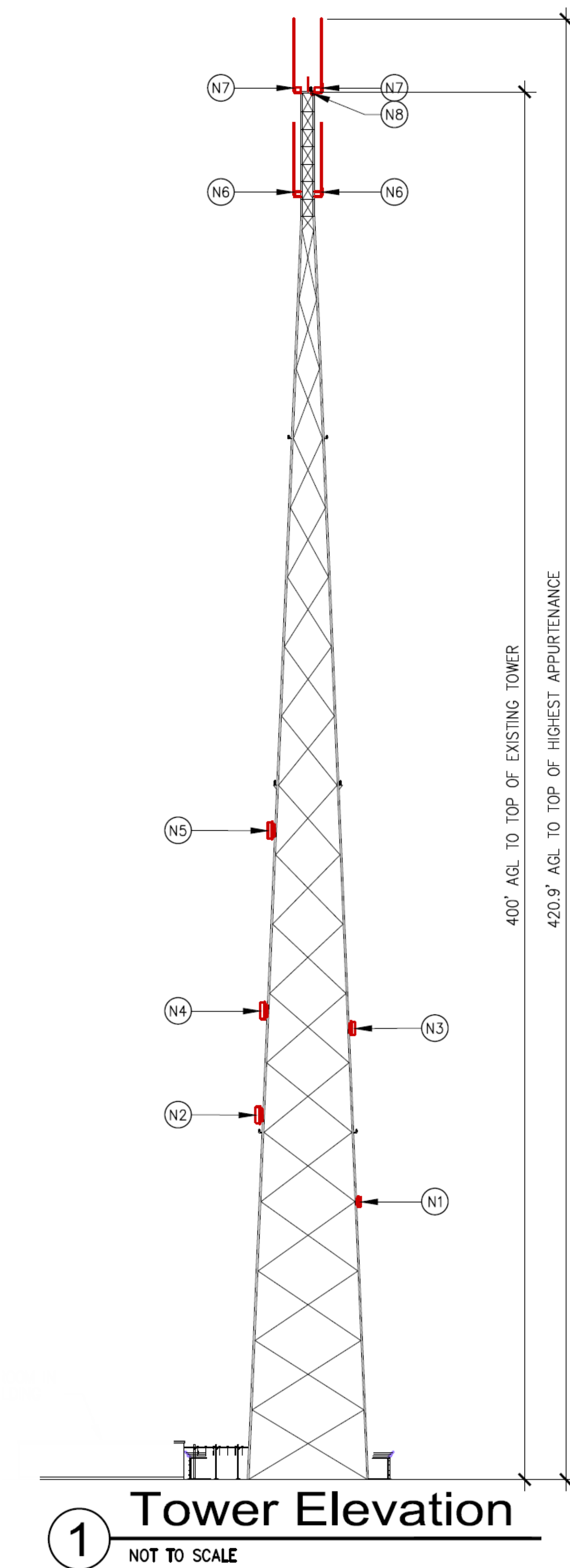
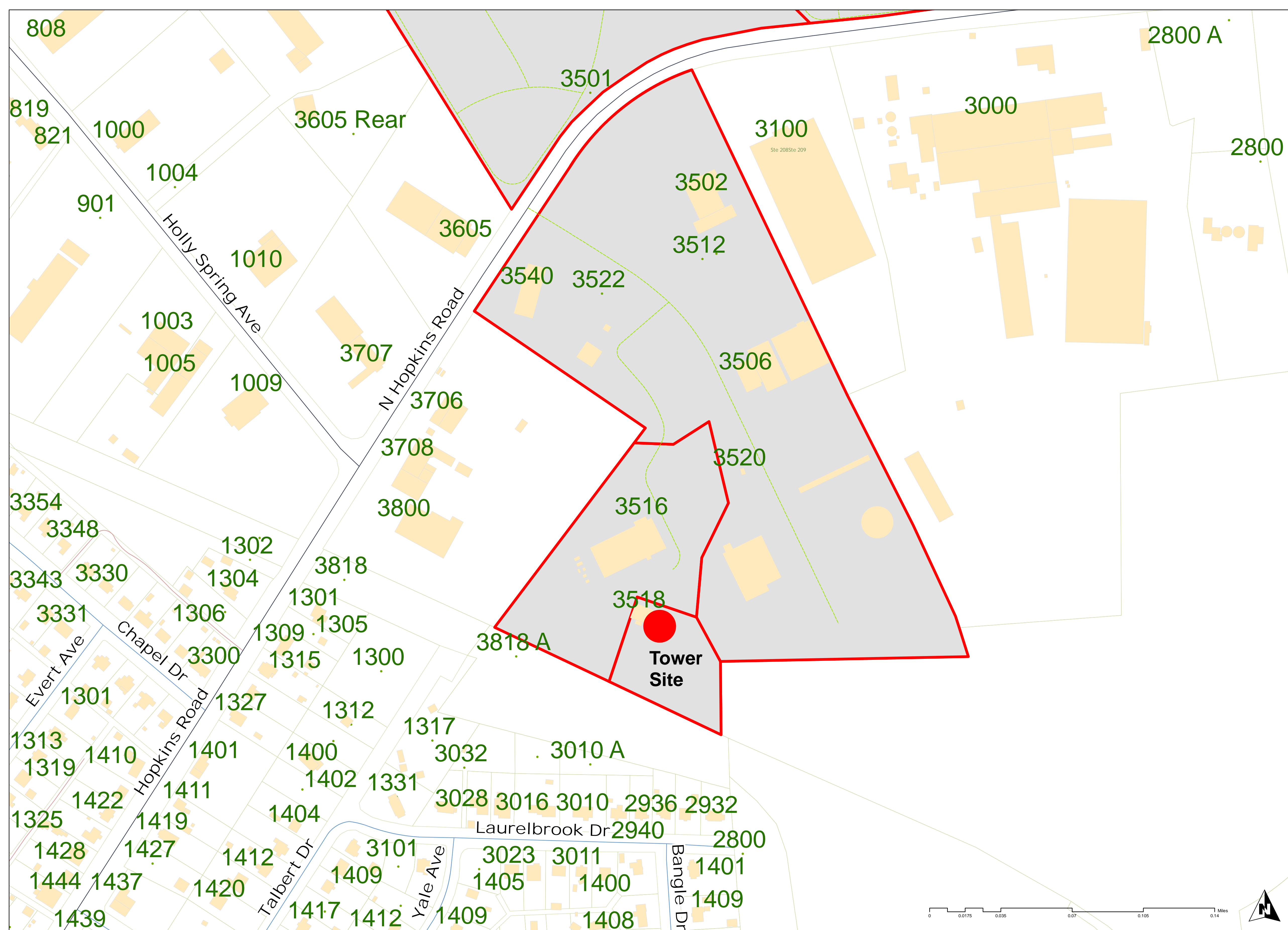


Hopkins Road Radio Tower

3518 N. HOPKINS ROAD, RICHMOND, VA 23224

Legend

- Tower Site
- Structures
- Address
- Richmond Property
- Parcels



Justin Briggs
911 GIS Manager
December 5, 2016

Disclaimer: The City of Richmond assumes no liability for any errors, omissions, or inaccuracies in the information provided regardless of the cause of such errors, omissions, or inaccuracies. Users should verify the information provided before making any decisions or taking any actions based on the information provided herein.

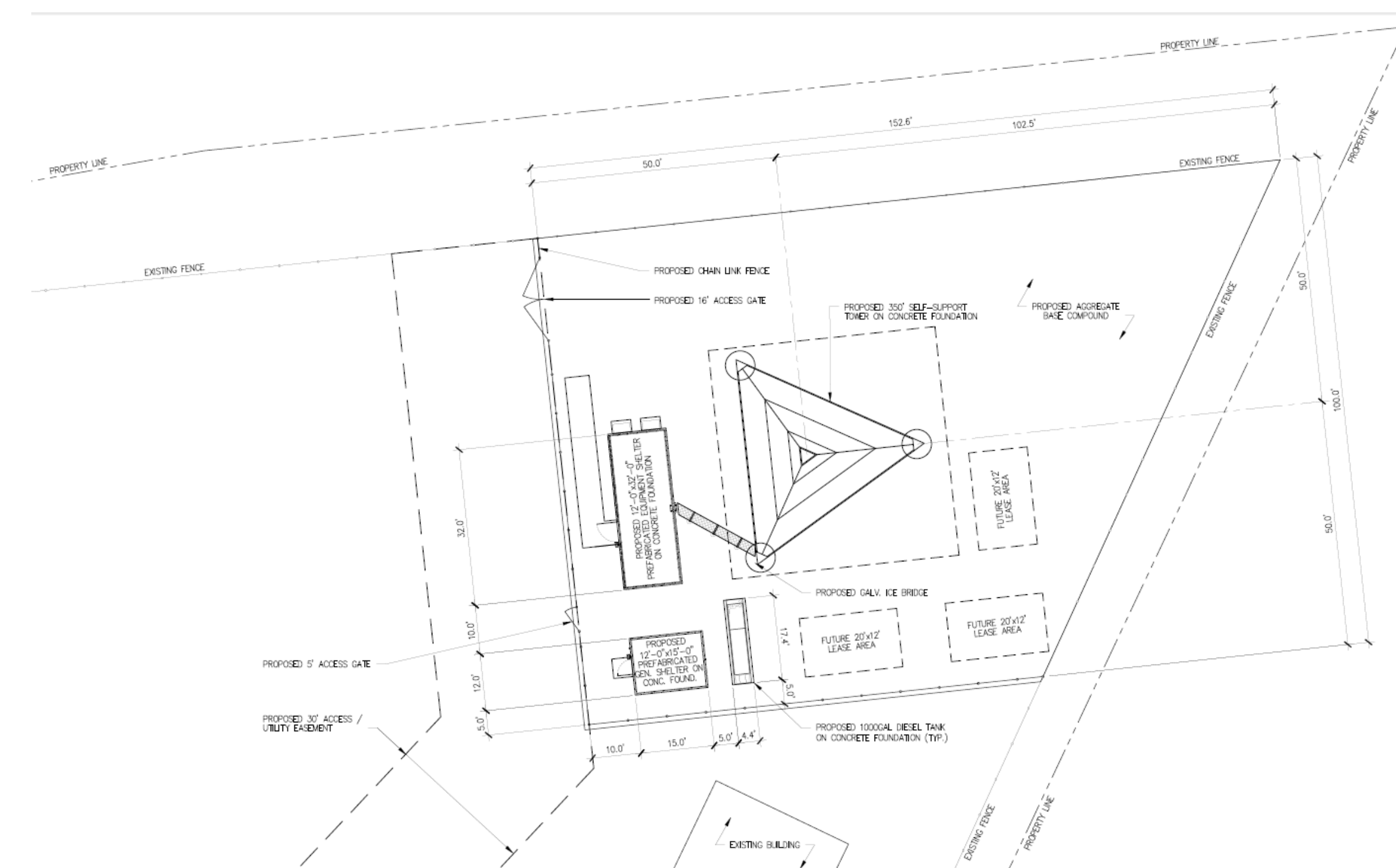
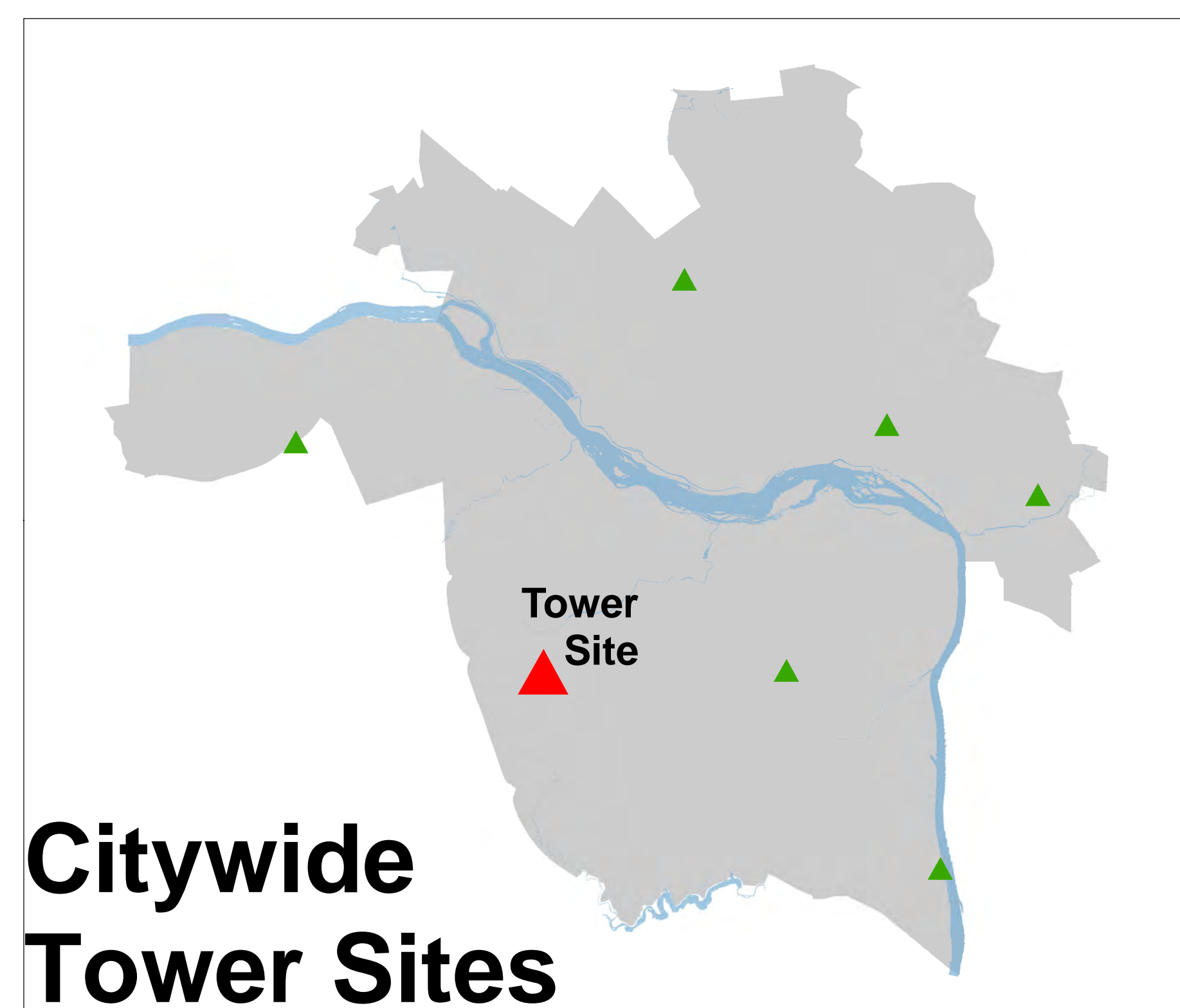
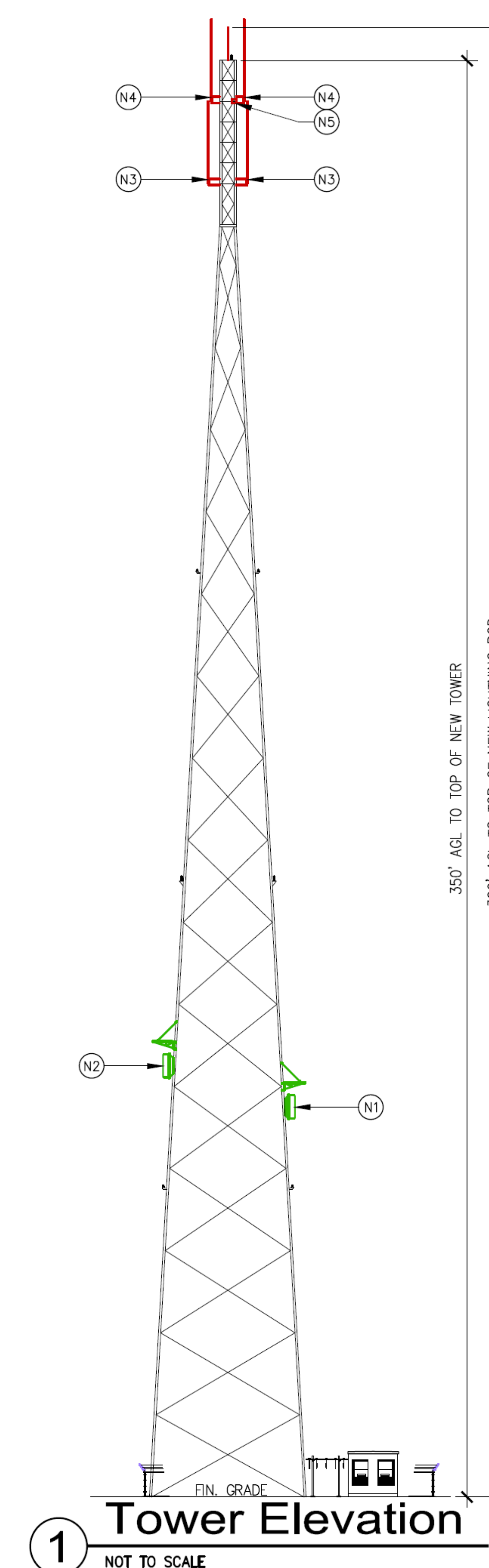
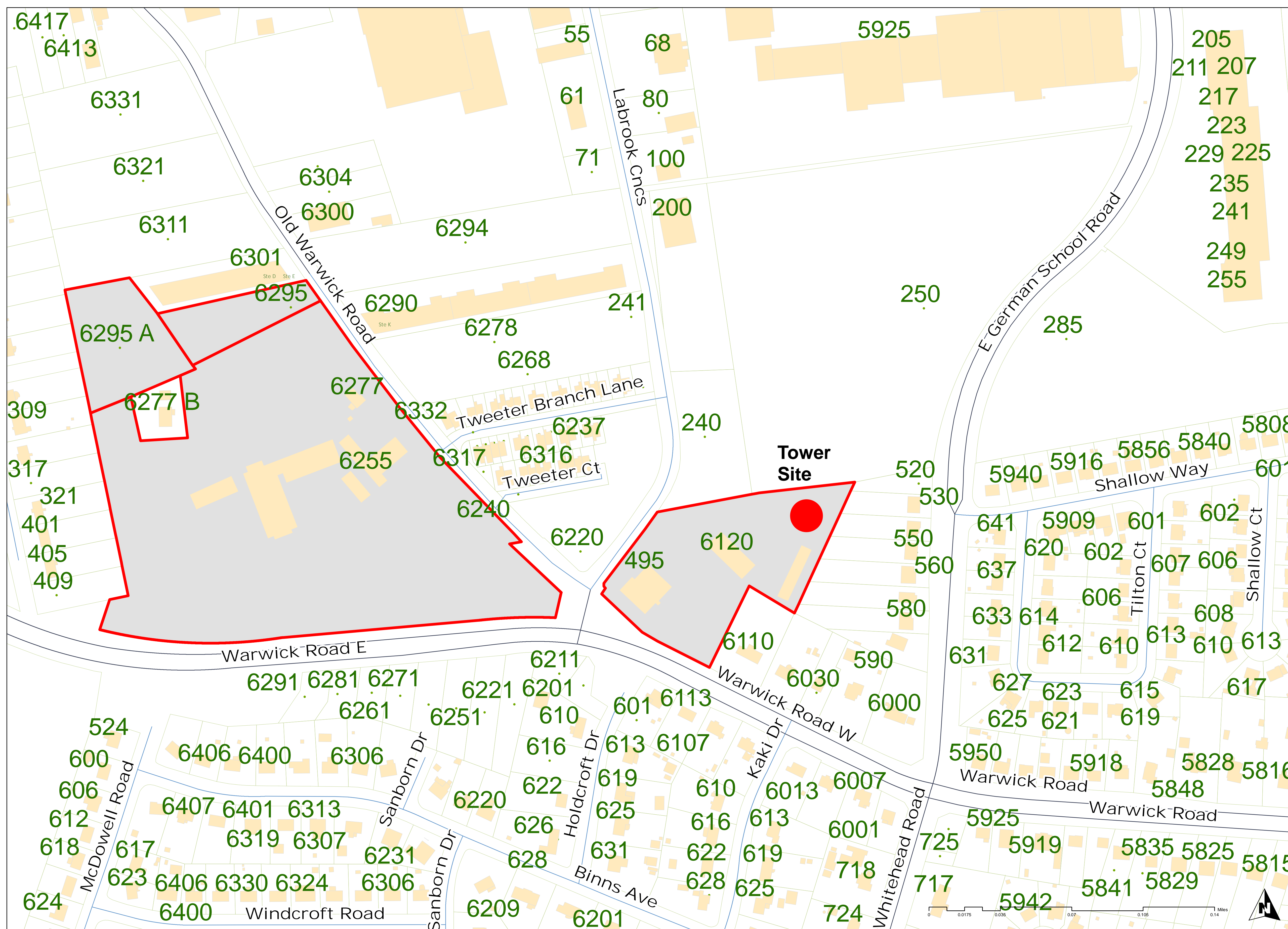


Fire Station 23 Radio Tower

495 LABROOK CONCOURSE, RICHMOND, VA 23224

Legend

- Tower Site
- Structures
- Address
- Richmond Property
- Parcels



Justin Briggs
911 GIS Manager
December 5, 2016

Disclaimer: The City of Richmond assumes no liability either for any errors, omissions, or inaccuracies in the information provided regardless of the cause of such or for any decisions made, actions taken, or actions not taken by the user in reliance upon the information provided herein.

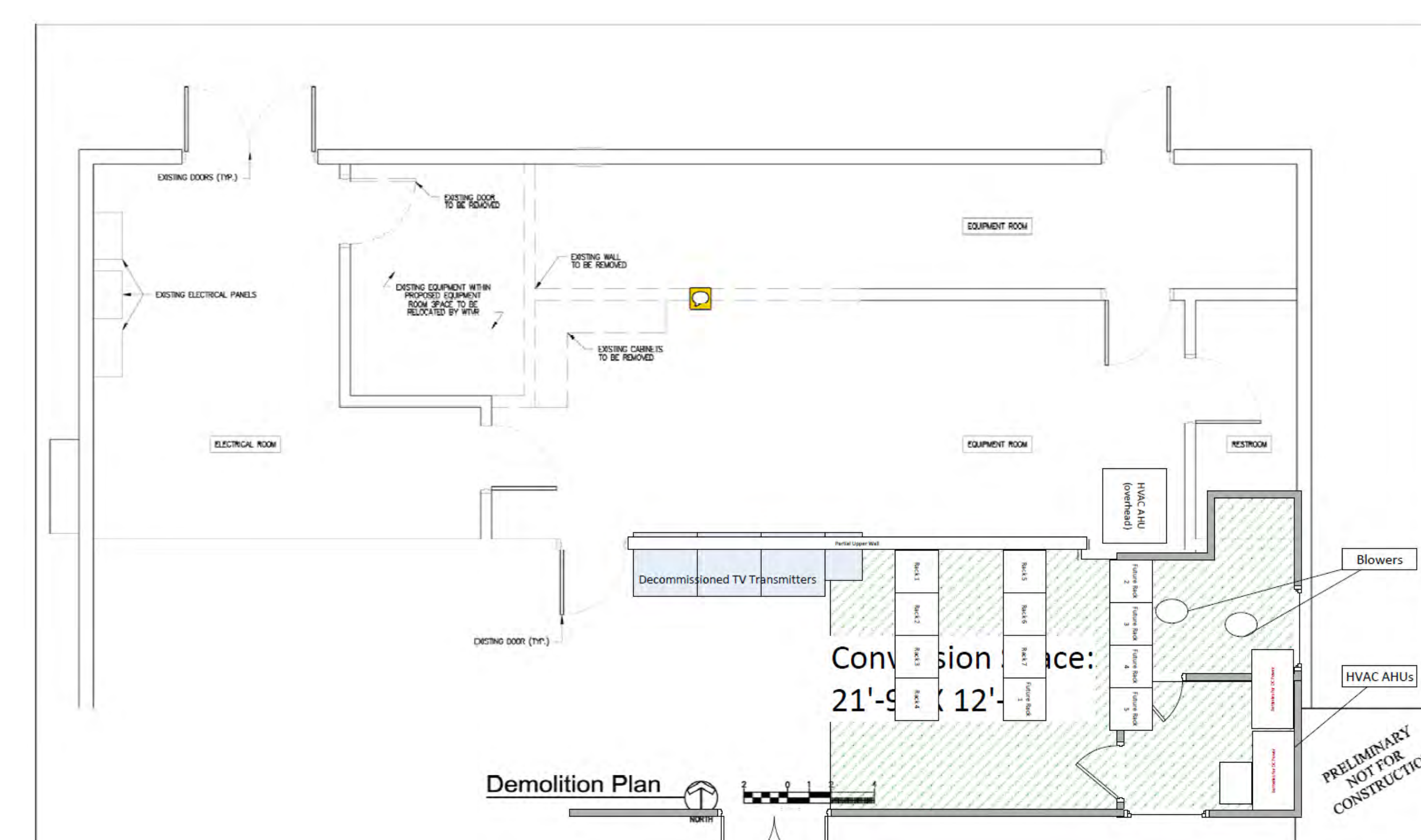
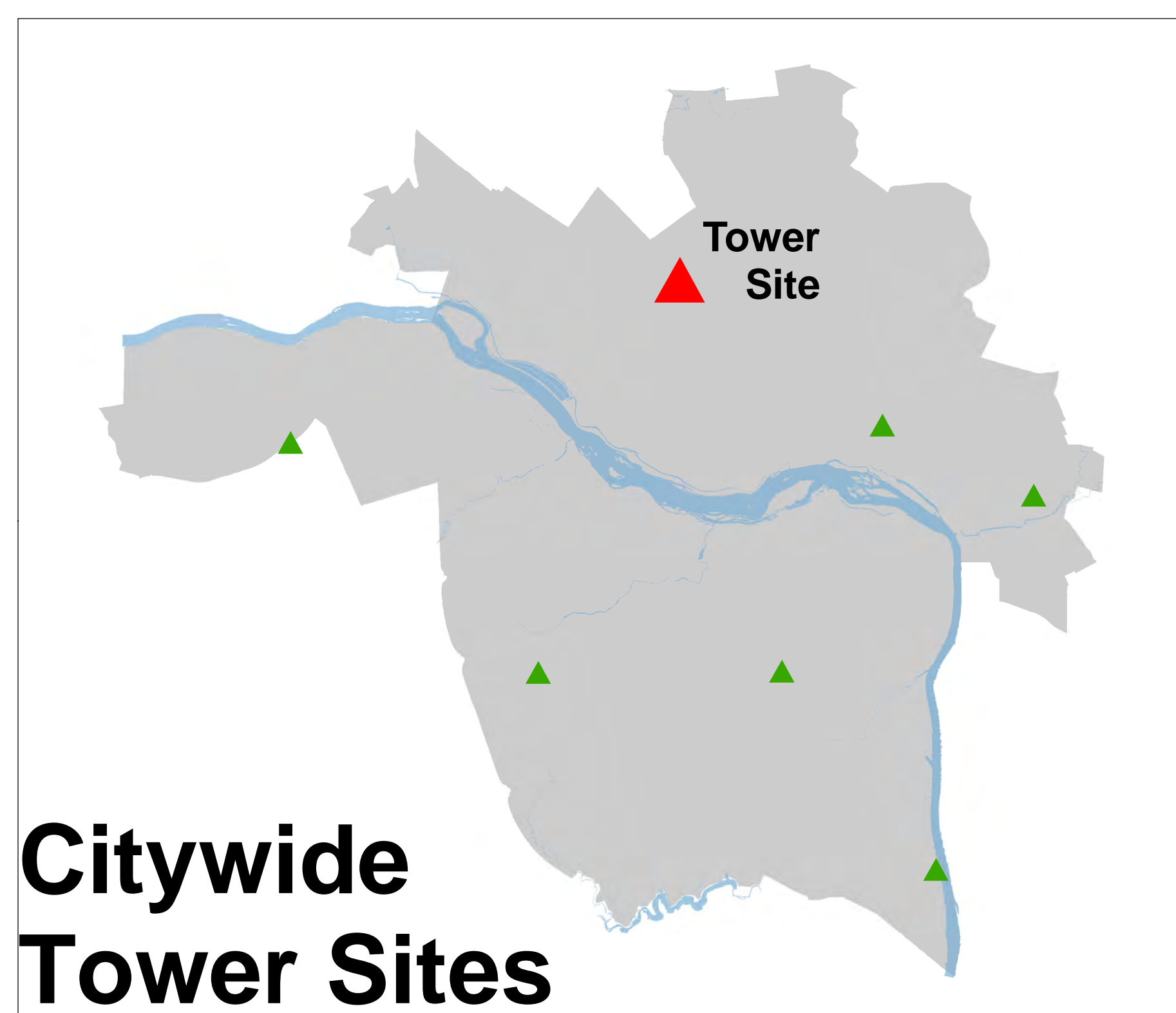
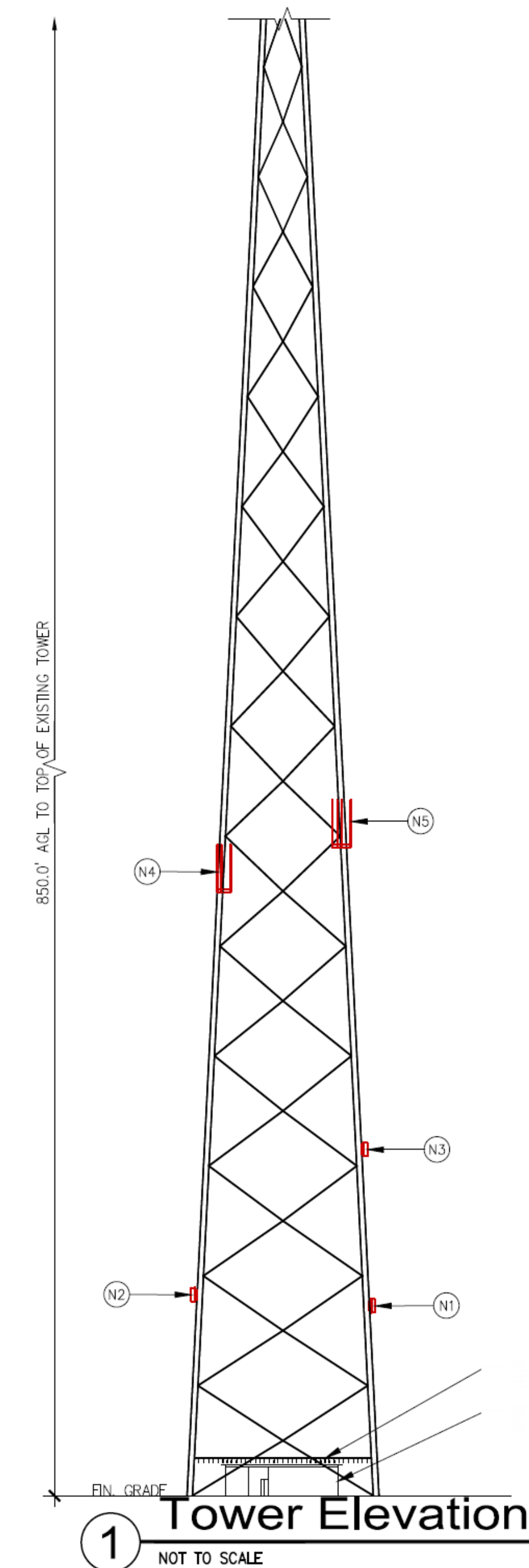
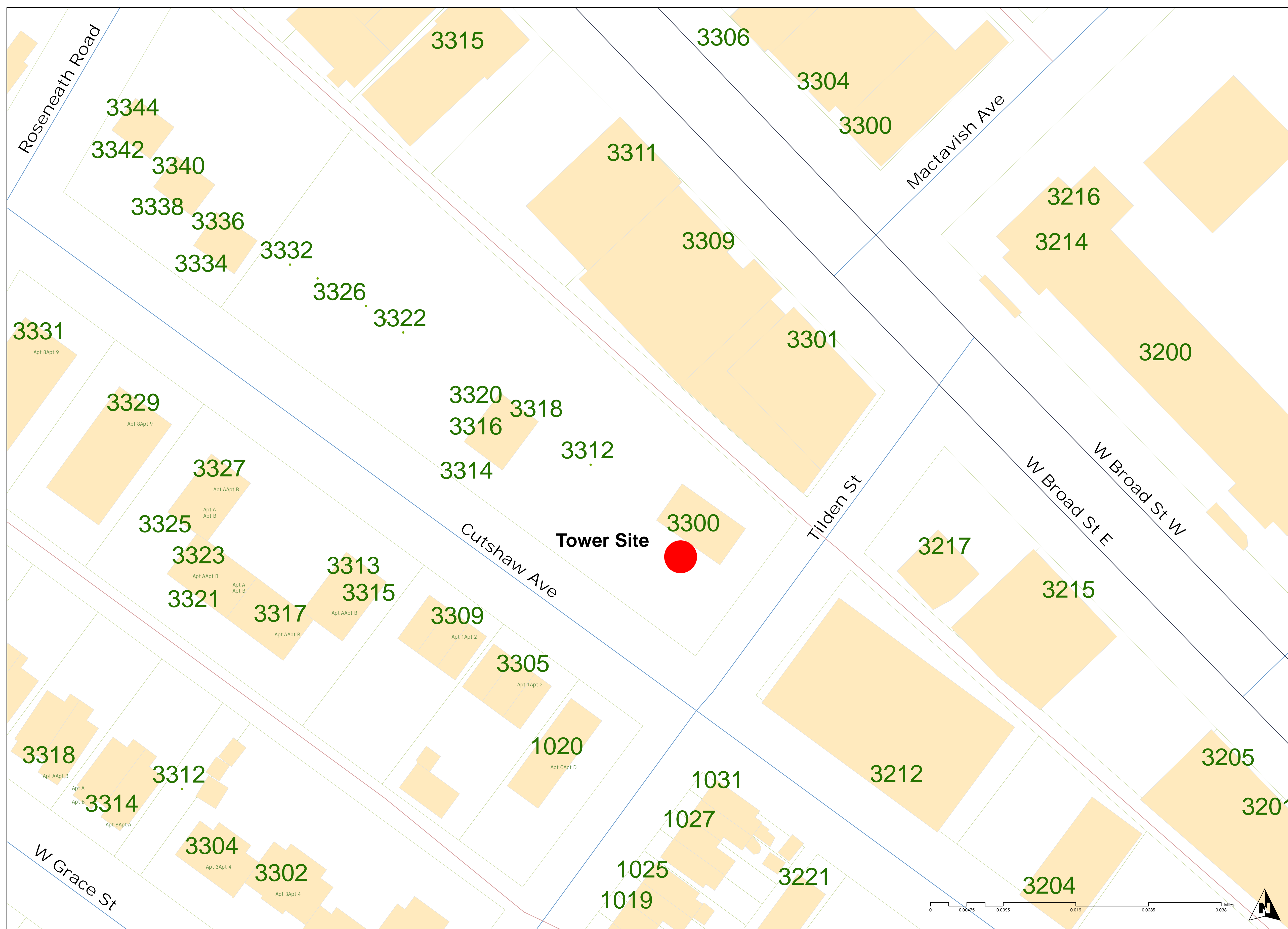


WTVR Radio Tower

CUTSHAW AVENUE, RICHMOND, VA 23230

Legend

- Tower Site
- Structures
- Address
- Richmond Property
- Parcels



Justin Briggs
911 GIS Manager
December 5, 2016

Disclaimer: The City of Richmond assumes no liability either for any errors, omissions, or inaccuracies in the information provided, or for the use of such information for any purpose, or for any actions taken by the user in reliance on the information provided herein.