

# Blackwell Park

Urban Design Committee Final Review  
February 14, 2024

Project for:



DEPARTMENT OF  
**PARKS, RECREATION  
AND COMMUNITY  
FACILITIES**

Project by:



**TIMMONS GROUP**

# Table of Contents

<b>1</b>	<b>Project Context .....</b>	<b>03</b>
<b>2</b>	<b>Site Plan .....</b>	<b>06</b>
<b>3</b>	<b>Landscape .....</b>	<b>12</b>
<b>4</b>	<b>Lighting .....</b>	<b>17</b>
<b>5</b>	<b>Project Schedule .....</b>	<b>19</b>

# Project Context

# Context Map

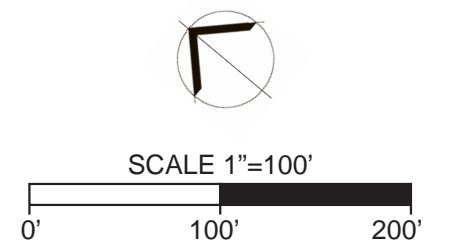


# Existing Site Photos



# Site Plan

# Site Plan



- |                                     |                           |                                  |                         |                 |                         |  |                          |                        |                           |                         |                       |                          |                                      |
|-------------------------------------|---------------------------|----------------------------------|-------------------------|-----------------|-------------------------|--|--------------------------|------------------------|---------------------------|-------------------------|-----------------------|--------------------------|--------------------------------------|
| <b>1</b> Existing Basketball Courts | <b>2</b> Community Garden | <b>3</b> BMP   Bioretention Area | <b>4</b> Baseball Field | <b>5</b> Meadow | <b>6</b> Football Field | <b>7</b> Baseball Dugout w/ Green roof | <b>8</b> Ping Pong Table | <b>9</b> Fitness Court | <b>10</b> Multi-use Trail | <b>11</b> Site Lighting | <b>12</b> Canopy Tree | <b>13</b> Flowering Tree | <b>14</b> Existing Restroom Facility |
|-------------------------------------|---------------------------|----------------------------------|-------------------------|-----------------|-------------------------|--|--------------------------|------------------------|---------------------------|-------------------------|-----------------------|--------------------------|--------------------------------------|

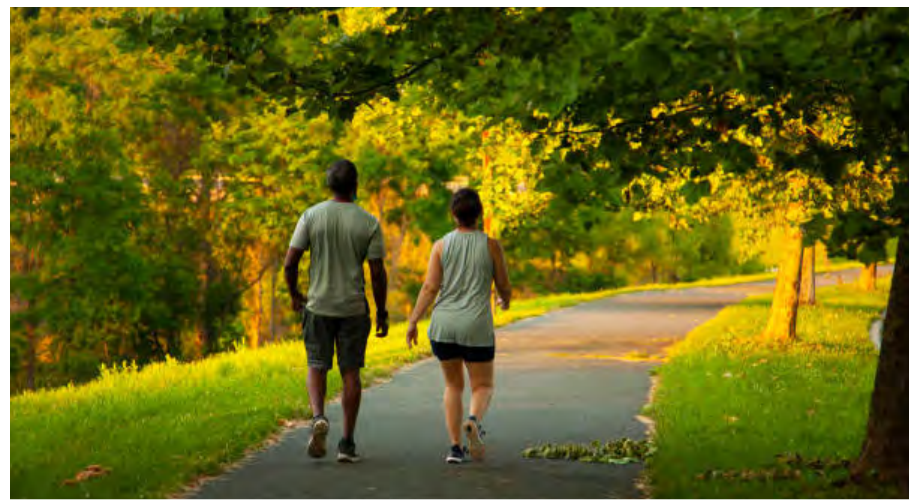
# Park Features



PERMEABLE PARKING LOT



GARDEN BEDS



PERMEABLE FITNESS TRAIL



FITNESS COURT



SPORTS COURT



BENCH SEATING



BASEBALL FIELD



PING PONG TABLES



# Site Master Plan Future Items



- 1** Sports Court
- 2** Nature Play Space
- 3** Pedestrian Bridge
- 4** Access Path

# Street Elevation - E. 15th Street



# Street Elevation - Maury Street



# Landscape


# Planting Plan




# Planting Schedule


PLANT SCHEDULE							
CODE	QTY	BOTANICAL NAME	COMMON NAME	MIN. INSTALLED SIZE	ROOT	TYPE	
<b>TREES</b>							
ACE FRA	13	ACER RUBRUM 'FRANKSRED'	RED SUNSET® MAPLE	3.5" CAL.	B&B	SINGLE STEM	
BET BBC	5	BETULA NIGRA 'CULLY'	HERITAGE RIVER BIRCH MULTI-TRUNK	2.5" CAL.	B&B		
BET BB2	1	BETULA NIGRA 'CULLY'	HERITAGE® RIVER BIRCH	2.5" CAL.	B&B	SINGLE STEM	
GIN AUT	9	GINKGO BILOBA 'AUTUMN GOLD'	AUTUMN GOLD MAIDENHAIR TREE	3.5" CAL.	B&B	SINGLE STEM	
NYS WIL	8	NYSSA SYLVATICA 'WILDFIRE'	WILDFIRE TUPELO	2.5" CAL.	B&B		
PIN ECH	5	PINUS ECHINATA	SHORT LEAF PINE	2.5" CAL.	B&B		
QUE COC	7	QUERCUS COCCINEA	SCARLET OAK	2.5" CAL.	B&B		
TAX DIS	15	TAXODIUM DISTICHUM	BALD CYPRESS	3.5" CAL.	B&B	SINGLE STEM	
TIL RED	6	TILIA AMERICANA 'REDMOND'	REDMOND AMERICAN LINDEN	3.5" CAL.	B&B	SINGLE STEM	
ULM FMB	27	ULMUS PARVIFOLIA 'BOSQUE'	BOSQUE LACEBARK ELM	3.5" CAL.	B&B	SINGLE STEM	
<b>SMALL DECIDUOUS TREES</b>							
AME GRA	3	AMELANCHIER X GRANDIFLORA 'AUTUMN BRILLIANCE'	AUTUMN BRILLIANCE APPLE SERVICEBERRY	1.5" CAL., 6' HT. MIN.	B&B		
CHI WHK	3	CHIONANTHUS VIRGINICUS 'WHITE KNIGHT'	WHITE KNIGHT WHITE FRINGETREE	1.5" CAL., 6' HT. MIN.	B&B		
COR RBR	8	CORNUS FLORIDA 'RUBRA'	RED FLOWERING DOGWOOD	1.5" CAL., 6' HT. MIN.	B&B		
CRA VIR	3	CRATAEGUS VIRIDIS 'WINTER KING'	WINTER KING HAWTHORN	1.5" CAL.	B&B		
CODE	QTY	BOTANICAL NAME	COMMON NAME	MIN. INSTALLED SIZE	ROOT	TYPE	SPACING
<b>SHRUBS</b>							
AMS HUB	10	AMSONIA HUBRICHTII	ARKANSAS BLUESTAR	1 GAL.	CONTAINER		36" o.c.
AMS BLU	10	AMSONIA TABERNAEMONTANA 'BLUE ICE'	BLUE ICE EASTERN BLUESTAR	1 GAL.	CONTAINER		48" o.c.
CLE HUM	20	CLETHRA ALNIFOLIA 'HUMMINGBIRD'	HUMMINGBIRD SUMMERSWEET	24" HT./SPRD.	1 GAL.		48" o.c.
COR SER	3	CORNUS SERICEA 'SMNCSBD'	ARCTIC FIRE® YELLOW DOGWOOD	1 GAL.	CONTAINER		42" o.c.
HYD QUE	15	HYDRANGEA QUERCIFOLIA 'SIKE'S DWARF'	SIKE'S DWARF OAKLEAF HYDRANGEA	1 GAL.	CONTAINER		48" o.c.
HYD RUB	22	HYDRANGEA QUERCIFOLIA 'RUBY SLIPPERS'	RUBY SLIPPERS OAKLEAF HYDRANGEA	1 GAL.	CONTAINER		60" o.c.
ILE RED	64	ILEX VERTICILLATA 'RED SPRITE'	RED SPRITE WINTERBERRY	24" HT./SPRD.	CONTAINER		36" o.c.
ITE VIR	14	ITEA VIRGINICA 'HENRY'S GARNET'	HENRY'S GARNET SWEETSPIRE	1 GAL.	CONTAINER		36" o.c.
PAN NOR	37	PANICUM VIRGATUM 'NORTHWIND'	NORTHWIND SWITCH GRASS	1 GAL.			24" o.c.
<b>PERENNIALS</b>							
ACH TER	18	ACHILLEA MILLEFOLIUM 'TERRA COTTA'	TERRA COTTA COMMON YARROW	1 GAL.	CONTAINER		24" o.c.
AGA BLA	16	AGASTACHE X 'BLACK ADDER'	BLACK ADDER ANISE HYSSOP	1 GAL.	CONTAINER		24" o.c.
BAP AUS	9	BAPTISIA AUSTRALIS	BLUE WILD INDIGO	1 GAL.	CONTAINER		36" o.c.
COR VER	11	COREOPSIS VERTICILLATA 'ZAGREB'	ZAGREB TICKSEED	1 GAL.	CONTAINER		24" o.c.
<b>GROUND COVERS</b>							
ASC INC	617	ASCLEPIAS INCARNATA	SWAMP MILKWEED	1 QT.	CONTAINER		18" o.c.
CAR CHE	123	CAREX CHEROKEENSIS	CHEROKEE SEDGE	1 QT.	CONTAINER		12" o.c.
CAR MUS	88	CAREX MUSKINGUMENSIS	PALM SEDGE	1 QT.	CONTAINER		12" o.c.
CAR STR	1,451	CAREX STRICTA	TUSSOCK SEDGE	1 QT.	CONTAINER		18" o.c.
EUP LIT	269	EUPATORIUM PURPUREUM 'LITTLE JOE'	DWARF JOE PYE WEED	1 QT.	CONTAINER		24" o.c.
GER MAC	46	GERANIUM MACULATUM	SPOTTED GERANIUM	1 GAL.	CONTAINER		12" o.c.
HEU VIL	168	HEUCHERA VILLOSA	HAIRY ALUMROOT	1 QT.	CONTAINER		12" o.c.
IRI VIR	257	IRIS VIRGINICA	BLUE FLAG IRIS	1 QT.	CONTAINER		24" o.c.
JUN BLW	27	JUNCUS INFLEXUS 'BLUE ARROWS'	BLUE ARROWS JUNCUS	1 QT.	CONTAINER		24" o.c.
LIA SPI	39	LIATRIS SPICATA	BLAZING STAR	1 QT.	CONTAINER		12" o.c.
MUH CAP	18	MUHLENBERGIA CAPILLARIS	PINK MUHLY GRASS	1 GAL.	CONTAINER		24" o.c.
PAN VIR	867	PANICUM VIRGATUM	SWITCH GRASS	1 GAL.	CONTAINER		30" o.c.
RHU ARO	126	RHUS AROMATICA 'GRO-LOW'	GRO-LOW FRAGRANT SUMAC	1 GAL.	CONTAINER		60" o.c.
RUD HIR	51	RUDBECKIA HIRTA	BLACK-EYED SUSAN	1 GAL.	CONTAINER		18" o.c.
SAL LYR	68	SALVIA LYRATA	LYRELEAF SAGE	1 QT.	CONTAINER		12" o.c.
SCH LIT	114	SCHIZACHYRIUM SCOPARIUM	LITTLE BLUESTEM	1 QT.	CONTAINER		12" o.c.
SPO HET	275	SPOROBOLUS HETEROLEPIS	PRAIRIE DROPSEED	1 QT.	CONTAINER		12" o.c.


## BARE ROOT AND SEEDING SCHEDULE

	<b>REFORESTATION MIX</b>	25,088 SF
	ACER RUBRUM / RED MAPLE	56 14% @ 96" oc
	DIOSPYROS VIRGINIANA / COMMON PERSIMMON	56 14% @ 96" oc
	LIQUIDAMBAR STYRACIFLUA / SWEET GUM	56 14% @ 96" oc
	PINUS TAEDA / LOBLOLLY PINE	56 14% @ 96" oc
	QUERCUS ALBA / WHITE OAK	56 14% @ 96" oc
	QUERCUS RUBRA / RED OAK	64 16% @ 96" oc
	SASSAFRAS ALBIDUM / SASSAFRAS	56 14% @ 96" oc


	<b>MEADOW PLUG MIX 1</b>	4,917 SF
	AMSONIA HUBRICHTII / ARKANSAS BLUESTAR	409 8% @ 12" oc
	ANDROPOGON GERARDII / BIG BLUESTEM	165 13% @ 24" oc
	ASCLEPIAS INCARNATA / SWAMP MILKWEED	409 8% @ 12" oc
	COREOPSIS LANCEOLATA / LANCELEAF TICKSEED	357 7% @ 12" oc
	ECHINACEA PURPUREA / CONEFLOWER	357 7% @ 12" oc
	EUPATORIUM FISTULOSUM / HOLLOW JOE PYE WEED	26 2% @ 24" oc
	HELIUM AUTUMNALE / SNEEZEWEED	409 8% @ 12" oc
	PACKERA AUREA / GOLDEN GROUNDSEL	357 7% @ 12" oc
	PANICUM VIRGATUM / SWITCH GRASS	165 13% @ 24" oc
	RUDBECKIA LACINIATA / CUTLEAF CONEFLOWER	26 2% @ 24" oc
	SOLIDAGO ODORA / SWEET GOLDENROD	409 8% @ 12" oc
	SORGHASTRUM NUTANS / INDIAN GRASS	165 13% @ 24" oc
	VERNONIA NOVEBORACENSIS / COMMON IRONWEED	26 2% @ 24" oc
	VERONICASTRUM VIRGINICUM / CULVER'S ROOT	26 2% @ 24" oc

	<b>MEADOW PLUG MIX 2</b>	5,877 SF
	AQUILEGIA CANADENSIS / EASTERN COLUMBINE	428 7% @ 12" oc
	ASTER NOVAE-ANGLIAE 'VIBRANT DOME' / VIBRANT DOME NEW ENGLAND ASTER	488 8% @ 12" oc
	BAPTISIA AUSTRALIS / BLUE WILD INDIGO	31 2% @ 24" oc
	BOUTELOUA CURTIPENDULA / TIDE OATS GRAMA	198 13% @ 24" oc
	COREOPSIS VERTICILLATA / TICKSEED	428 7% @ 12" oc
	ERAGROSTIS SPECTABILIS / PURPLE LOVEGRASS	198 13% @ 24" oc
	ERYNGIUM YUCCIFOLIUM / RATTLESNAKE MASTER	31 2% @ 24" oc
	EUPATORIUM PERFOLIATUM / COMMON BONESET	488 8% @ 12" oc
	HELIANTHUS HELIANTHOIDES / OX-EYE SUNFLOWER	488 8% @ 12" oc
	LIATRIS SPICATA / BLAZING STAR	31 2% @ 24" oc
	LOBELIA CARDINALIS / CARDINAL FLOWER	428 7% @ 12" oc
	PANICUM VIRGATUM / SWITCH GRASS	198 13% @ 24" oc
	SALVIA LYRATA / LYRELEAF SAGE	488 8% @ 12" oc
	SOLIDAGO ODORA / SWEET GOLDENROD	122 2% @ 12" oc

	<b>PERENNIAL MIX</b>	784 SF
	ASCLEPIAS TUBEROSA / BUTTERFLY MILKWEED	55 15% @ 18" oc
	CAREX MUSKINGUMENSIS / PALM SEDGE	204 25% @ 12" oc
	GERANIUM MACULATUM / SPOTTED GERANIUM	163 20% @ 12" oc
	JUNCUS INFLEXUS 'BLUE ARROWS' / BLUE ARROWS JUNCUS	41 20% @ 24" oc
	PENSTEMON DIGITALIS / BEARDTONGUE	164 20% @ 12" oc

	<b>RETENTION BASIN SEED MIX</b>	4,341 SF
	ERNST SEEDS RETENTION BASIN WILDLIFE MIX (ERNMX-127)	

	<b>MEADOW SEED MIX 1</b>	7,747 SF
	ERNST SEEDS MESIC TO DRY NATIVE POLLINATOR MIX (ERNMX-105)	

	<b>MEADOW SEED MIX 2</b>	7,039 SF
	ERNST SEEDS SHOWY NORTHEAST NATIVE WILDFLOWER AND GRASS MIX (ERNMX-153)	

# Landscape



VIRGINIA SWEETSPIRE



OAKLEAF HYDRANGEA

## NATIVE SHRUBS AND MEADOW



DOGWOOD



BOSQUE ELM



SCARLET OAK

## TREES



IRIS VERSICOLOR

## BIORETENTION POND

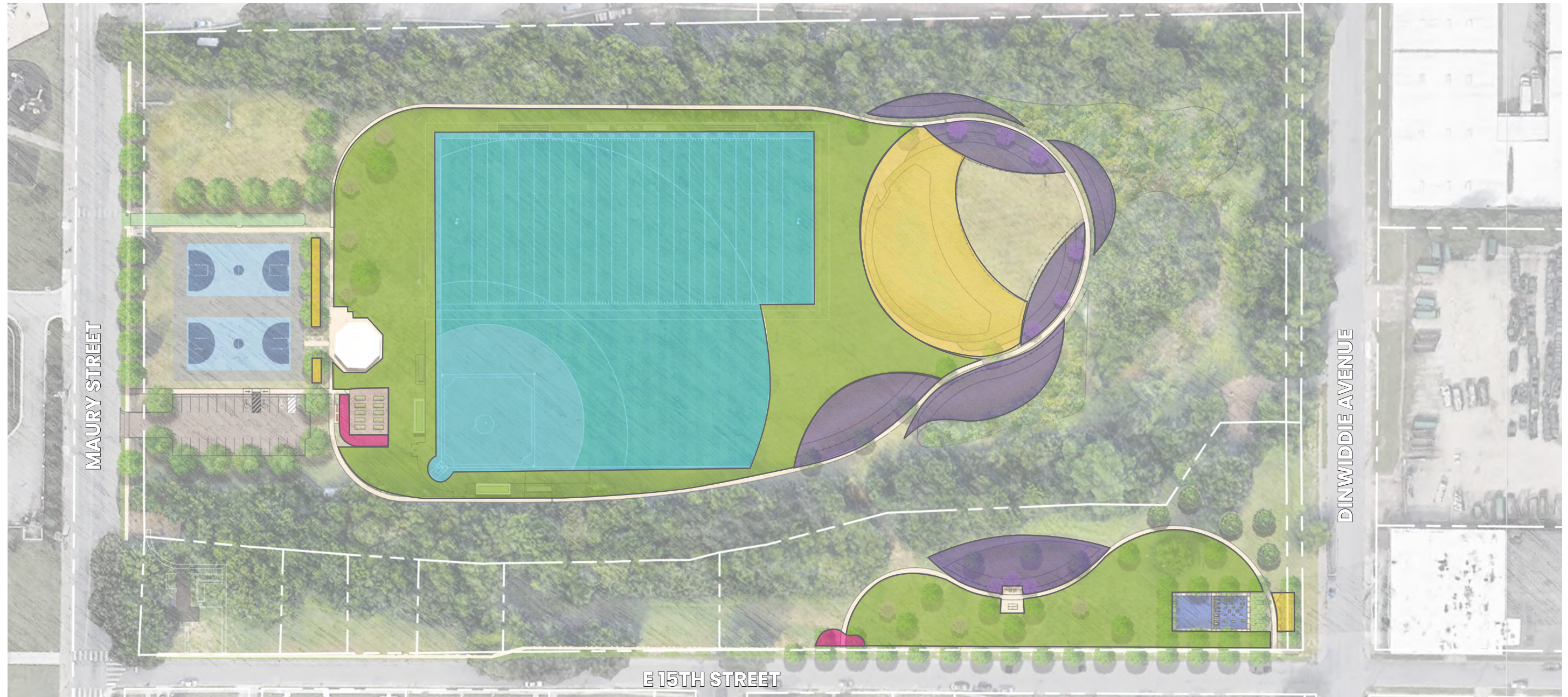


TUSSOCK SEDGE



DWARF JOE PYE WEED

# Maintenance Plan



- TURF LAWN MAINTENANCE (ROUTINE MOWING & WATER FOR ESTABLISHMENT)
- BIO-RETENTION AREA (ENSURE BASIN IS CLEAR OF DEBRIS; REPLACE PLANTS AS NEEDED; SEASONAL WEEDING)
- PLANT BED MAINTENANCE (SEASONAL WEEDING, PRUNING MULCHING & WATER FOR ESTABLISHMENT)
- SPORTS FIELD MAINTENANCE (ROUTINE MOWING, SEASONAL AERATING, ADDITIONAL WATERING)
- MEADOW MAINTENANCE (YEARLY MOWING & WATER FOR ESTABLISHMENT)

**LANDSCAPE MAINTENANCE:**

- SPORTS FIELD TO BE MOWN, AERATED, OVERSEED, AND WATERED ACCORDING TO CITY OF RICHMOND STANDARD PRACTICES.
- ALL OTHER LAWN AREAS TO BE MOWN AND MAINTAINED ACCORDING TO CITY OF RICHMOND STANDARD PRACTICES.
- SHRUBS AND TREES TO BE PRUNED FOR STRUCTURAL AND CLEARANCE REASONS ONLY; PLANTING BED AREAS TO BE TOP DRESSED ANNUALLY WITH DOUBLE SHREDDED HARDWOOD MULCH.
- ENGINEERED WOOD FIBER MULCH TO BE REGULARLY MAINTAINED, WEED, TILLED, AND TOP DRESSED WITH CERTIFIED PLAY MULCH.

**HARDSCAPE MAINTENANCE:**

- PAVEMENTS TO BE PATCHED AND REPAIRED AS NEEDED ACCORDING TO CITY OF RICHMOND PROTOCOLS AND STANDARDS.
- SIGNAGE TO BE CLEANED AND REPLACED AS NEEDED FOR MAINTENANCE AND LEGIBILITY.



# Lighting

# Site Lighting Plan



## LEGEND

- ◆ Sports Lighting
- ★ Parking Lot Lighting

# Project Schedule

# Project Schedule

