



City of Richmond Department of Planning & Development Review

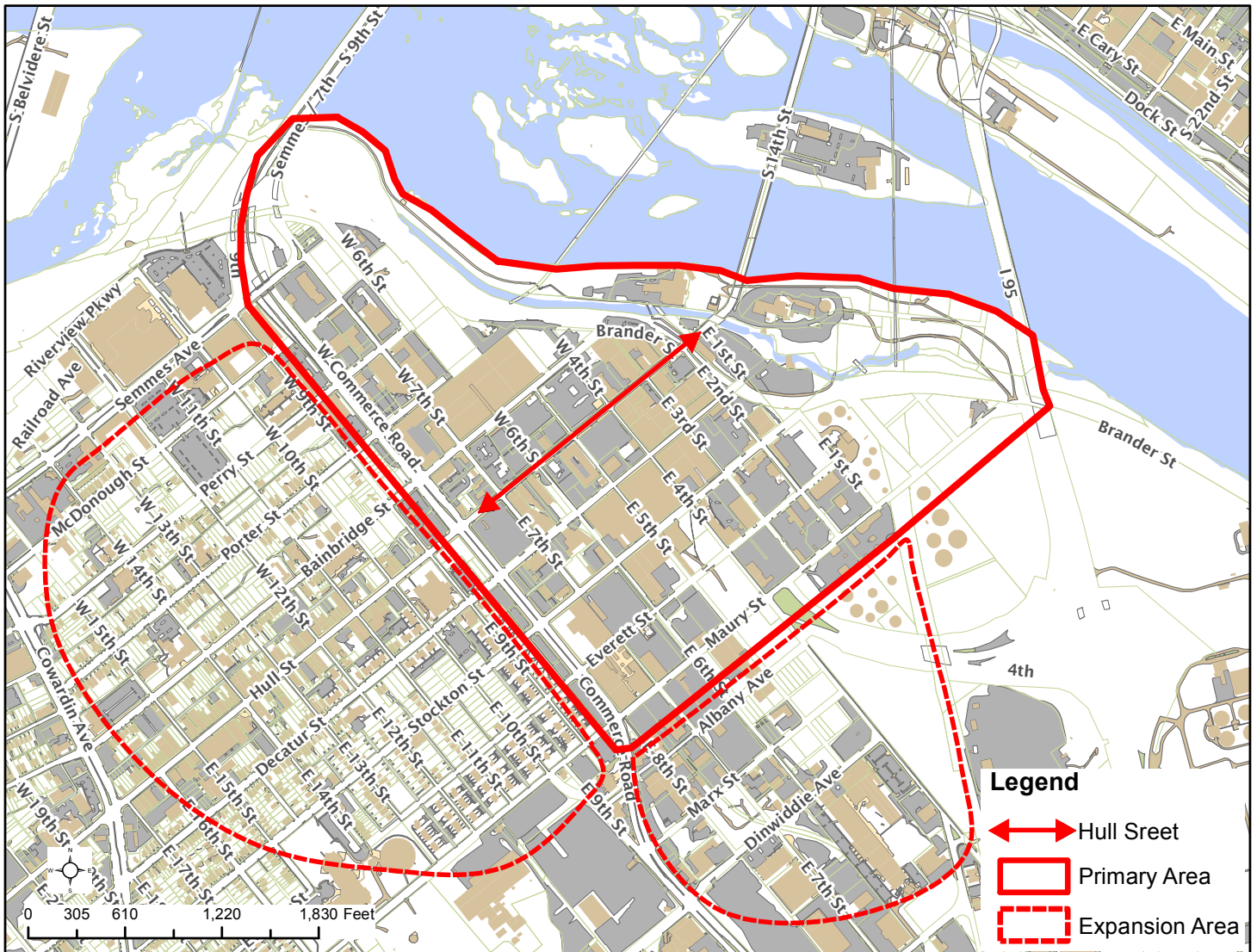
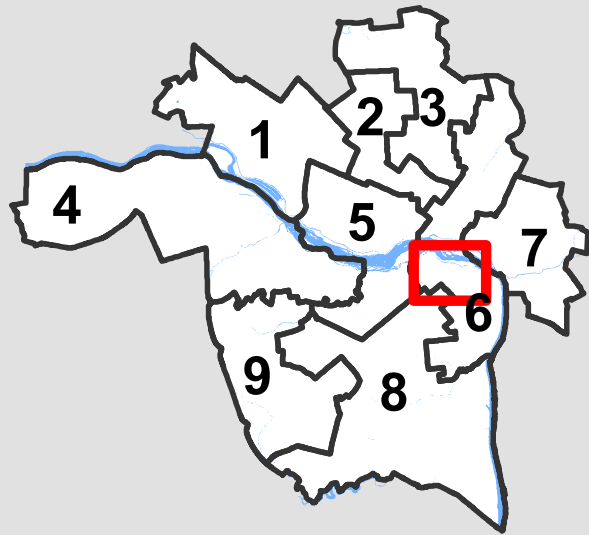
Location, Character, and Extent

LOCATION: Manchester

COUNCIL DISTRICT: 6

PROPOSAL: The application for 17.05 review, to consider and suggest the design of street fixtures and other public structures and appurtenances, of new Manchester Streetlights.

For questions, please contact Josh Son at 646-3741 or joshua.son@richmondgov.com





Application for URBAN DESIGN COMMITTEE Review

Department of Planning and Development Review
Planning & Preservation Division
900 E. Broad Street, Room 510
Richmond, Virginia 23219
(804) 646-6335

<http://www.richmondgov.com/CommitteeUrbanDesign>

Application Type

- Addition/Alteration to Existing Structure
 New Construction
 Streetscape
 Site Amenity

- Encroachment
 Master Plan
 Sign
 Other

Review Type

- Conceptual
 Final

Project Name: _____

Project Address: _____

Brief Project Description (this is not a replacement for the required detailed narrative) : _____

Applicant Information

(on all applications other than encroachments, a City agency representative must be the applicant)

Name: _____ Email: _____

City Agency: _____ Phone: _____

Address: _____

Main Contact (if different from Applicant): _____

Company: _____ Phone: _____

Email: _____

Submittal Deadlines

All applications and support materials must be filed no later than 21 days prior to the scheduled meeting of the Urban Design Committee (UDC). Please see the schedule on page 3 as actual deadlines are adjusted due to City holidays. **Late or incomplete submissions will be deferred to the next meeting.**

Filing

Applications can be mailed or delivered to the attention of "Urban Design Committee" at the address listed at the top of this page. **It is important that the applicant discuss the proposal with appropriate City agencies, Zoning Administration staff, and area civic associations and residents prior to filing the application with the UDC.**

UDC Background

The UDC is a ten member committee created by City Council in 1968 whose purpose is to advise the City Planning Commission on the design of projects on City property or right-of-way. The UDC provides advice of an aesthetic nature in connection with the performance of the duties of the Commission under Sections 17.05, 17.06 and 17.07 of the City Charter. The UDC also advises the Department of Public Works in regards to private encroachments in the public right-of-way.



Application for URBAN DESIGN COMMITTEE Review

Department of Planning and Development Review
Planning & Preservation Division
900 E. Broad Street, Room 510
Richmond, Virginia 23219
(804) 646-6335

<http://www.richmondgov.com/CommitteeUrbanDesign>

Submission Requirements

- 10 copies of the application cover sheet and all support materials (see below), unless the application is for an encroachment, in which case only 6 copies are required. Plan sheets should be 11" x 17", folded to 8 1/2" x 11". If it is not possible to scale plans to these dimensions, please provide one set of larger, scaled plans.
- An electronic copy (PDF preferred) of all application materials, which can be burned to disc, emailed, or delivered by FTP.

All applications must include the attached cover sheet and the following support materials, as applicable to the project:

For Conceptual Review

- A detailed project narrative which includes the following: purpose of the project, project background, project budget and funding sources, description of construction program and estimated construction start date (description should also provide information on the surrounding area to provide context).
- A site plan for the project indicating site characteristics which include: building footprints, parking areas, pedestrian routes, recreation areas, open areas and areas of future expansion.
- A set of floor plans and elevations, as detailed as possible.
- A landscaping plan which shows the general location and character of plant materials and notes any existing tree to be removed.

For Final Review

- A detailed project narrative which includes the following: purpose of the project, project background, project budget and funding sources, description of construction program and estimated construction start date (description should also provide information on the surrounding area to provide context).
- A site plan for the project indicating site characteristics which include: building footprints, parking areas, pedestrian routes, recreation areas, open areas and areas of future expansion.
- A set of floor plans and elevations, as detailed as possible.
- A landscaping plan that includes a complete plant schedule, the precise location of all plant materials, and a landscape maintenance analysis. The plant schedule must show number, size and type of each planting proposed. If existing trees are to be removed, their size, type and location must be noted on the landscape plan.
- The location of all lighting units should be noted on a site plan, including wall-mounted, site and parking lot lighting. Other site details, such as benches, trash containers and special paving materials, should also be located. Include specification sheets for each item.
- Samples of all proposed exterior building materials, including but not limited to brick, mortar, shingles, siding, glass, paint and stain colors. When an actual sample cannot be provided, a product information sheet that shows the item or a photo of an existing item may be substituted.

Review and Processing

Once an application is received, it is reviewed by staff, who compiles a report that is sent to the UDC. A copy of the report and the meeting agenda will be sent to the applicant prior to the meeting. The applicant or a representative should be present at the UDC meeting or the application may be deferred to the next regularly scheduled meeting. It is also strongly suggested that a representative of the City Agency which will have final responsibility for the item be present at the meeting (if the applicant and the representative are not the same). Once the UDC recommends action on the application, it is automatically placed on the agenda for the next City Planning Commission (CPC) meeting. An exception to this is encroachment applications, recommendations for which are forwarded to the Department of Public Works. The applicant or a representative must be present at the CPC meeting or the application may be deferred to the next regularly scheduled meeting.

CITY OF RICHMOND URBAN DESIGN COMMITTEE (UDC)

MEETING SCHEDULE 2017

UDC Meetings	UDC Submission Deadlines	Anticipated Date of Planning Commission Following the UDC Meeting
December 8, 2016	November 12, 2015*	January 3, 2017
January 5, 2017	December 8, 2016**	January 17, 2017 ¹
February 9, 2017	January 19, 2017	February 21, 2017 ²
March 9, 2017	February 16, 2017	March 20, 2017
April 6, 2017	March 16, 2017	April 17, 2017
May 4, 2017	April 13, 2017	May 15, 2017
June 8, 2017	May 18, 2017	June 19, 2017
July 6, 2017	June 15, 2017	July 17, 2017
August 10, 2017	July 20, 2017	August 21, 2017 ³
September 7, 2017	August 17, 2017	September 18, 2017
October 5, 2017	September 14, 2017	October 16, 2017
November 9, 2017	October 19, 2017	November 20, 2017
December 7, 2017	November 9, 2017*	December 18, 2017 ⁴

¹ Monday, January 16th is a City of Richmond Holiday

² Monday, February 20th is a City of Richmond Holiday

³ This August CPC Meeting may be canceled. If so, Planning Commission hearing would be Tuesday, September 5th.

⁴ This December CPC Meeting may be canceled. If so, Planning Commission hearing would be Tuesday, January 2, 2018.

* Moved forward to account for Veteran's Day/Thanksgiving Holiday Schedule

** Moved forward to account for Winter Holiday Schedule

The Richmond Urban Design Committee (UDC) is a ten member advisory committee created by City Council in 1968. Its purpose is to advise the City Planning Commission on the design of City projects. The UDC reviews projects for appropriateness in "location, character and extent" and for consistency with the City's Master Plan and forwards recommendations to the Planning Commission. The UDC also advises the Department of Public Works in regards to private encroachments in the public right-of-way.

Regular meetings are scheduled for the Thursday after the first Monday of each month at 10:00 a.m. in the 5th floor conference room of City Hall. Special meetings are scheduled as needed.

For additional information, please contact the Planning and Preservation Division staff at (804) 646-3741 or Joshua.Son@richmondgov.com



CITY OF RICHMOND

INTRACITY CORRESPONDENCE

TO: Urban Design Committee

FROM: Mark A. Olinger, Director
Department of Planning & Development Review

DATE: August 17, 2017

SUBJECT: Manchester Lighting

A handwritten signature in black ink, appearing to be "Mark A. Olinger", with a horizontal line extending to the right.

Purpose of the Project: To design and install new roadway and pedestrian light fixtures that reflect the character of Industrial Manchester. First priority would be Industrial Manchester, with first installation along Hull St. (please see slide #2).

Project Background: Street lighting and security have been a concern of residents and businesses for many years. Some streets are well lit, e.g., Hull St., but others appear to be very dark, especially the more narrow east-west streets (4th St., 6th St., and 7th St.). Safe sidewalk lighting is an issue throughout the neighborhood.

Following a number of meetings on this topic, staff began the process of looking at what kinds of lighting might have been prevalent during the latter part of the 19th Century-mid-20th Century as a "jumping off point" for any new lighting that might be installed.

Finding Manchester photographs with streetlighting in it was not easy. It was far easier to find one from Libbie Hill Park (please see slide #3) than of Manchester. Ultimately, through a search of the area as part of The Valentine collection, we were able to find examples of lighting that were clearly of the period of significance (please see slides #4 & #5) which could be updated to maintain the overall "feel" of the time, while meeting modern performance requirements.

We also discovered an old steel pole on Belvidere, between Cary and Cumberland Streets, that we believe is one of the few (maybe only) remaining streetlight poles from that general era where the cable brackets remain (please see slides #6 & #7).

The challenge then, to create a design that would be:

- Generally consistent with the historic fabric;
- Modern enough to fit into the emerging design aesthetic for the neighborhood;
- Flexible enough to be installed in a number of different locations and types (e.g., wooden poles, steel poles, on buildings, wide streets, narrow streets); and
- Potentially installed in other parts of Manchester, or similarly situated areas elsewhere in the city, e.g., Scott's Addition.

Project Context:

- **Location:** Primary location will be within the Industrial Manchester area. A map showing the primary area of installation is attached to this memo. It also shows potential longer-term expansions into other parts of the Manchester area as development and budgets permit.
- **Urban Fabric:** The fixture, bracketing/cabeling, and attachment to poles is consistent with the history and character of the area.

Project Specifics:

- **Luminaire:** Spring City Lechmere in the Matte Platinum finish (please see slide #8).
 - **Lamping:** DPU will be launching a series of test locations for LED lighting in the not-too-distant future. The Manchester streetlighting area is not one of the test locations. They will be looking at how this affects existing sub-stations, how the "start" of the LED varies from existing means of lighting, etc.

The goal is to be at 3000K LED...the drivers specified for this project will be able to accept 120V thru 277V, which means any voltage between these values are acceptable. The internal wiring of the luminaire will not change if the existing wattage is 277 volts or 240 volts and when DPU decides to change the line voltage to 120 volts in the future. The internal wiring will remain the same.

Until LED is a city-wide standard, the Lechmere can support metal halide or HPS based on the demands of DPU.

- **Attachments:** The lighting assembly (luminaire, cable, and bracket, both streetlight and pedestrian light) can be attached to either a steel pole (please see slides #9 & #10 for details), or to an existing wooden pole (please see slides #11-#14 for details). The assembly is designed to go from wood to steel as change-out occurs throughout the neighborhood.

Although not a part of this packet as there are no application, it is possible to have the light assembly crafted to provide for wall mounting. The arm length and the cable length could also be adjusted to accommodate differing street and sidewalk widths.

Public Notice: The lighting design has been shared with Manchester area developers, the Manchester Alliance, Department of Public Utilities, and Councilwoman Robertson. The reaction from the neighborhood, and Councilwoman has been very supportive.

DPU has agreed to include the fixture in their inventory. The project will include 10% "attic stock" for DPU.

Estimated Construction Start Date: Once final approval is received, the City will move immediately to bidding for the acquisition of the fixtures. Installation should occur in mid-2018.

If you have any questions, please contact me directly.

Thank you.

Mao

encl

Manchester Streetlighting

UDC Application Supporting Documentation

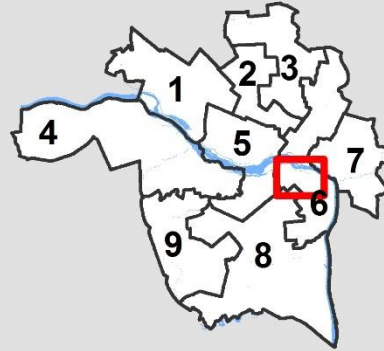
Vs.8.17.17



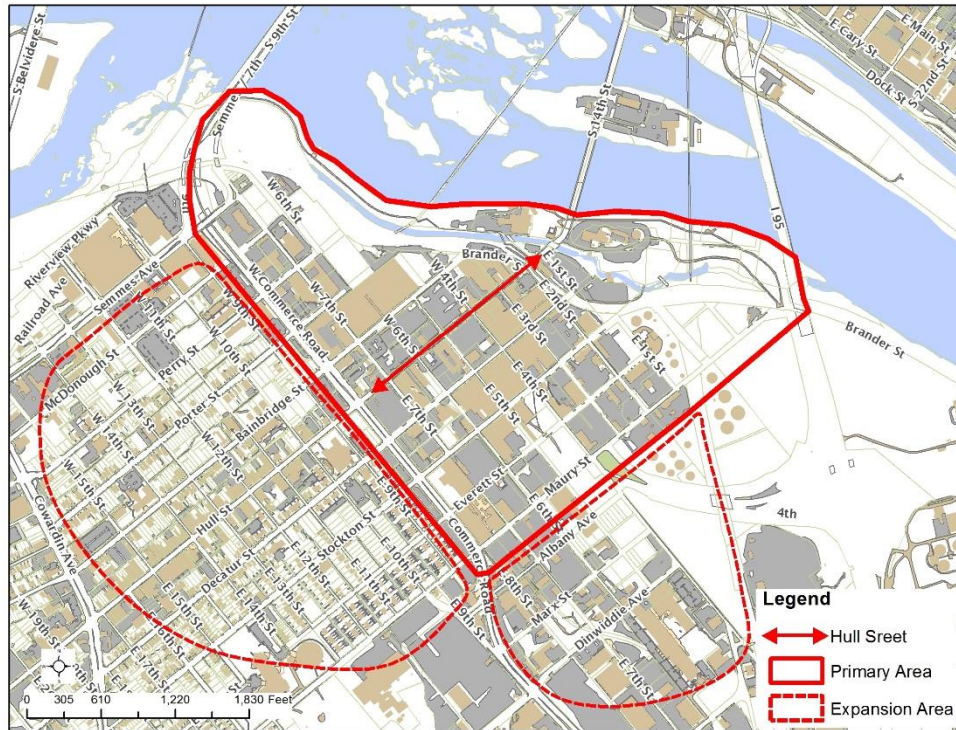
**City of Richmond
Department of Planning
& Development Review**

Location, Character, and Extent

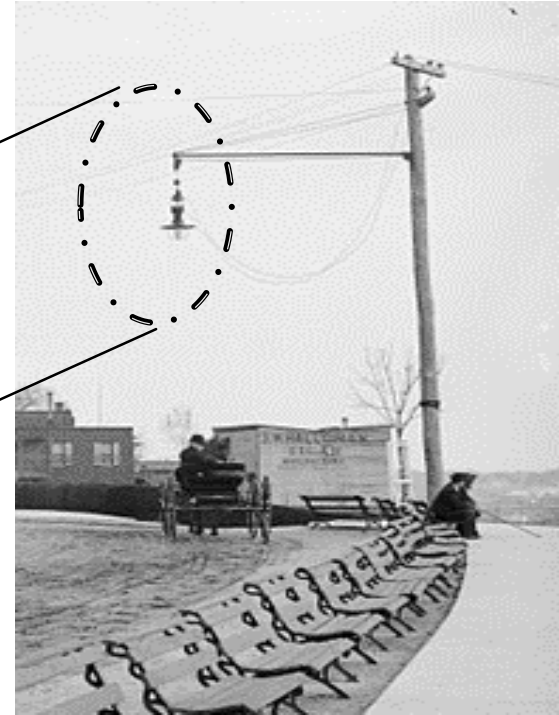
LOCATION: Manchester
COUNCIL DISTRICT: 6
PROPOSAL: Manchester Streetlighting



*For questions, please contact Josh Son
at 646-3741 or joshua.son@richmondgov.com*



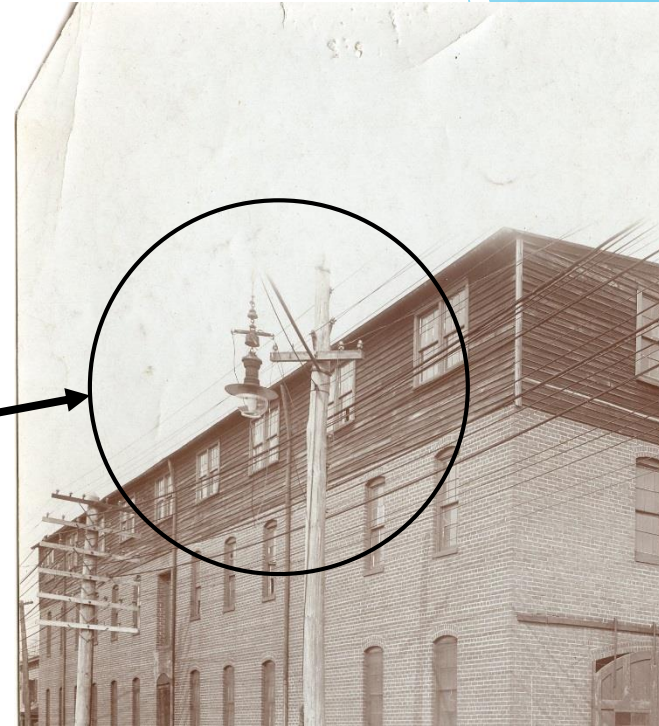
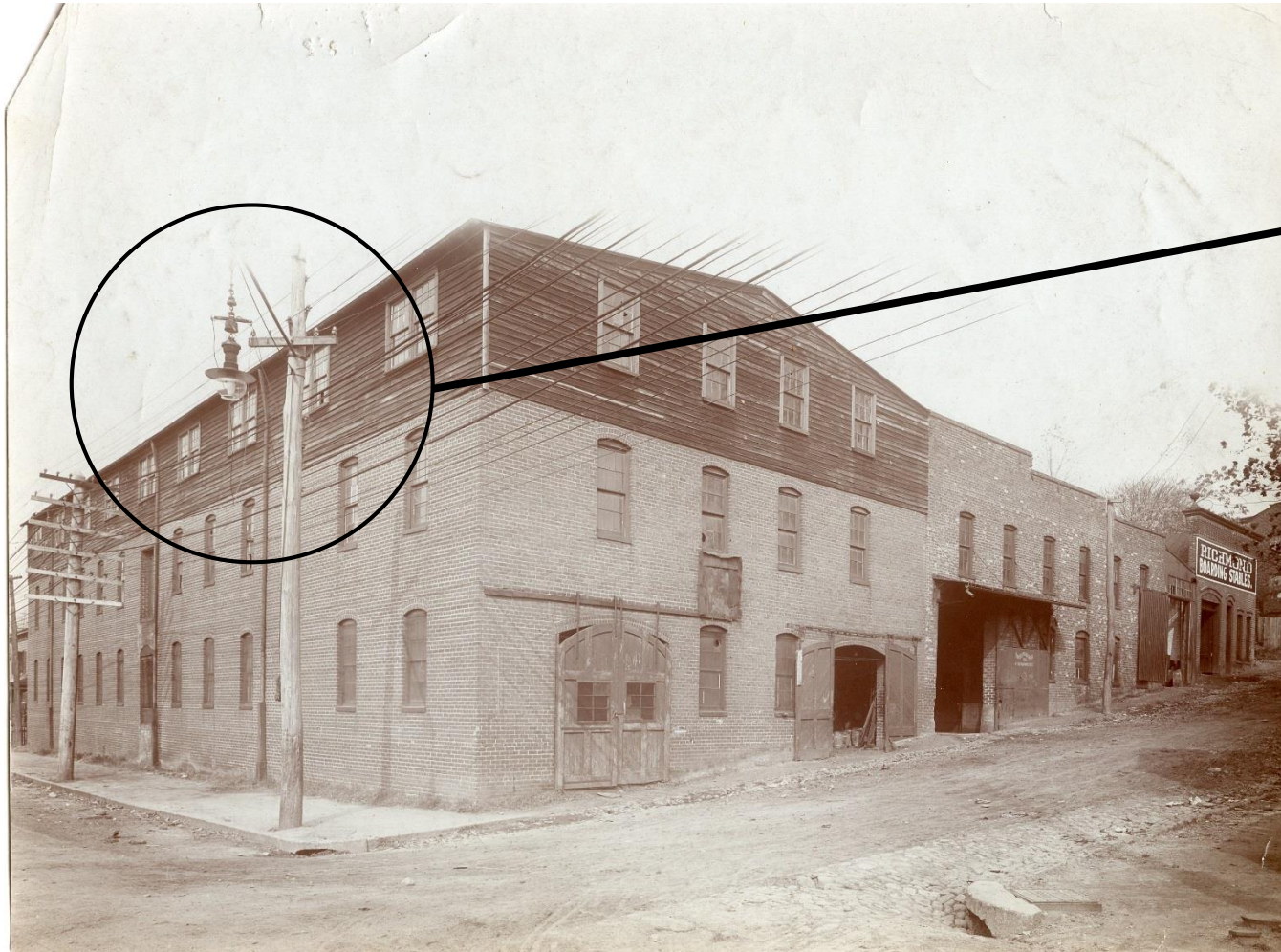
Historical Richmond Lights: Libbie Park



Historical Manchester Lights



Historical Manchester Lights



Existing Historic Pole: Belvidere Between Cary & Cumberland



Existing Historic Pole: Belvidere Between Cary & Cumberland

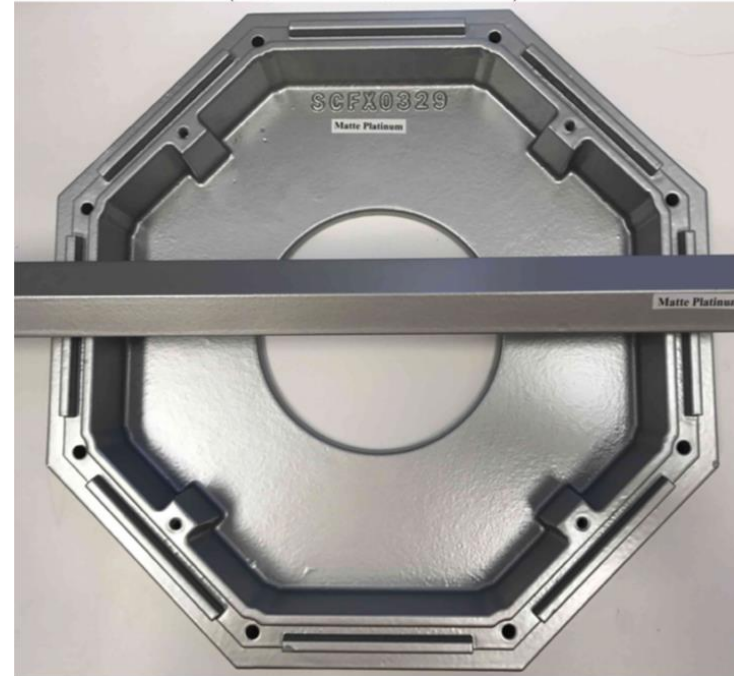


Spring City Option: Lechmere Luminaire, Matte Platinum Finish



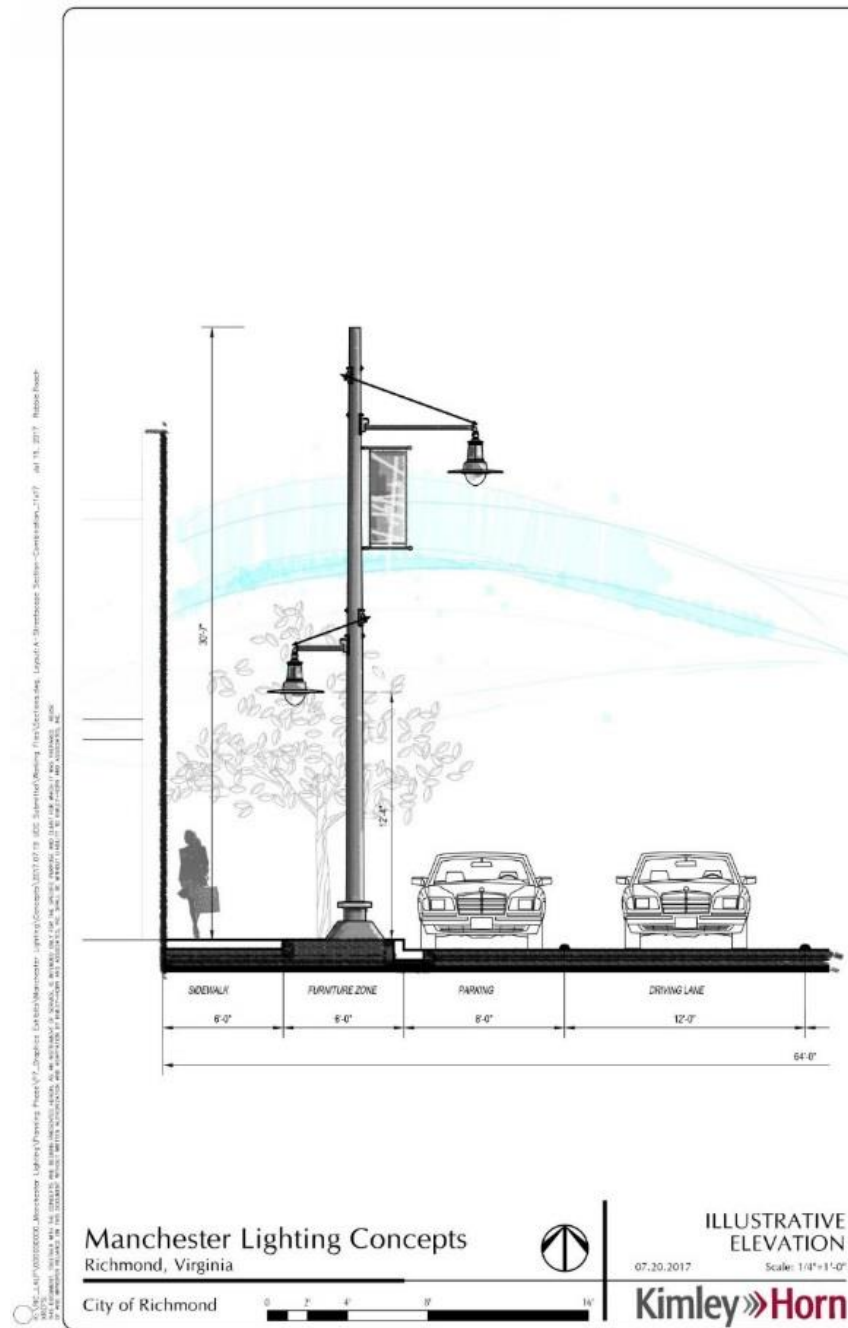
MOCK-UP FINISHES

FINISH SAMPLES
(PROVIDED BY SPRING CITY)

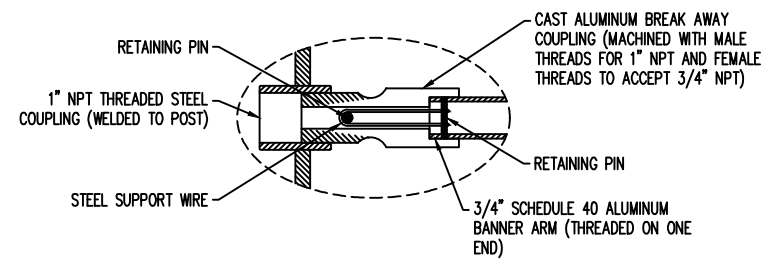
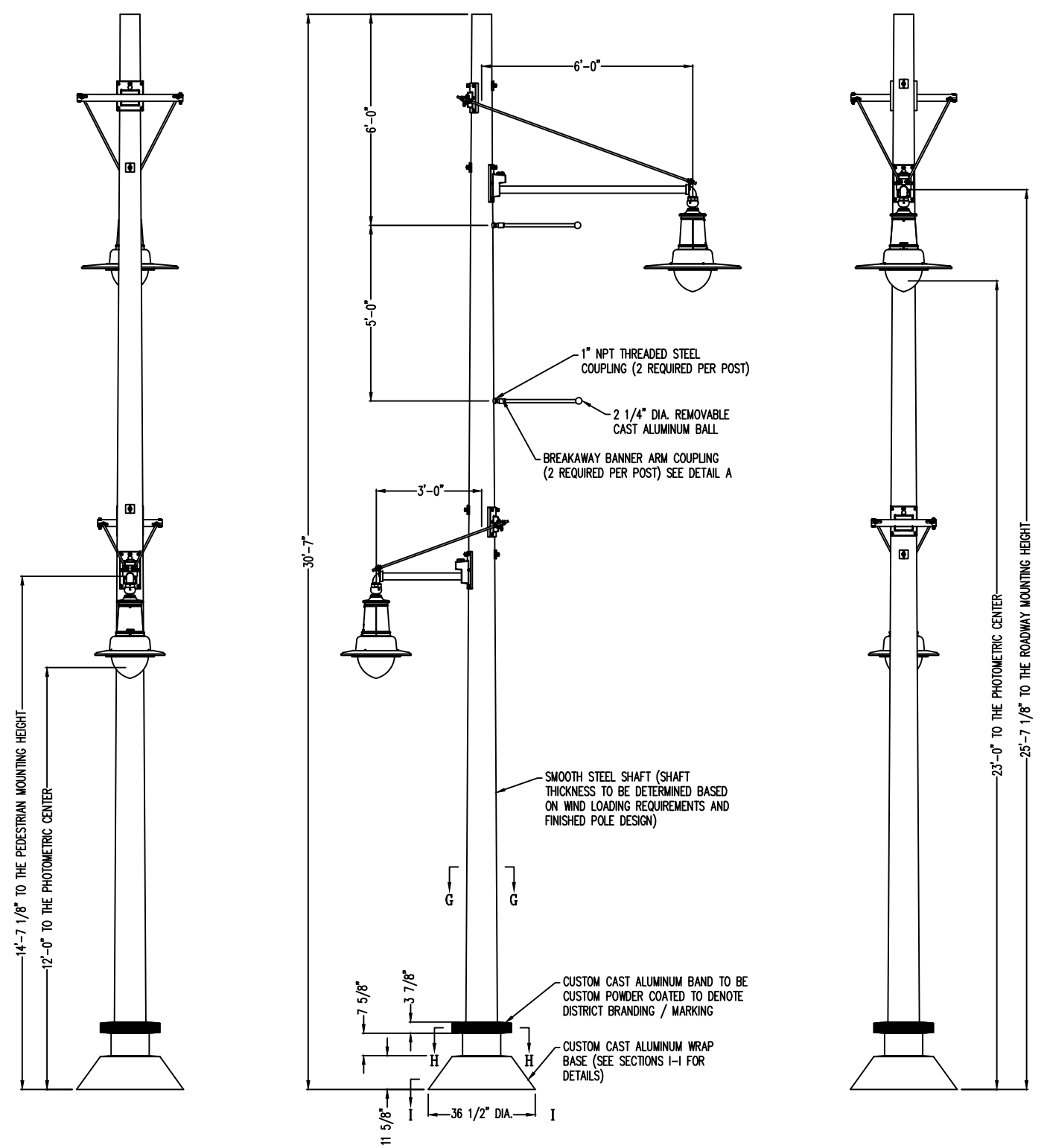


Schematic: Steel Pole Illustrative for Decorative Fixture*

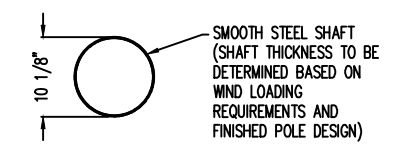
*Banner & Banner
Assembly not part of
request.



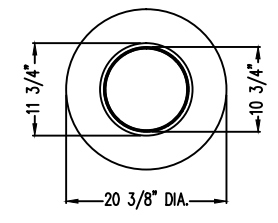
This drawing is property of Spring City Elect. Mfg. and is issued to the recipient with the understanding that it shall not be copied, duplicated, passed on to unauthorized parties, nor used for any purpose other than that for which it is specifically furnished except with Spring City's written permission.



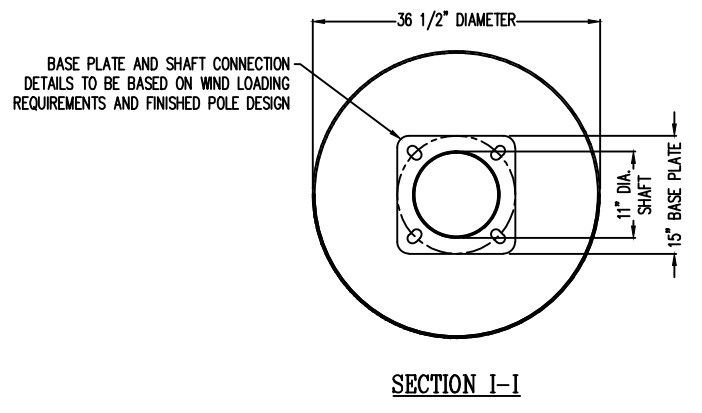
DETAIL A
BREAK AWAY COUPLING DETAIL
N.T.S.



SECTION G-G



SECTION H-H



SECTION I-I

ROADWAY LUMINAIRE SPECIFICATIONS:

STYLE: LECHMERE
HEIGHT: 2'-4 7/16"
WIDTH: 2'-9" DIAMETER
MATERIAL: CAST ALUMINUM ALLOY ANSI 356 PER A.S.T.M. B26-95
FINISH: POWDER COAT - PLEASE ADVISE COLOR
LAMPING: 120 WATT LED
VOLTAGE: ELECTRONIC WIRED AT 120-277 VOLTS
COLOR TEMP: 2700K (WARM WHITE)
DISTRIBUTION: TYPE III (ASYMMETRIC) - REFRACTIVE OPTICS
GLOBE: 110 STIPPLED POLYCARBONATE
MODIFIER: VERTICAL ALIGNMENT COUPLING
CATALOG NO. ALMLCH-LE120/EVX/X2-27-CR3-PS10-LAVBC-CU

ROADWAY CROSS ARM SPECIFICATIONS:

STYLE: TIMBER CROSS ARM
WIDTH: 6'-0" FROM C OF POST TO C OF LUMINAIRE
MATERIAL: 2" SCH-40 ALUMINUM PIPE WITH CAST ALUMINUM ORNAMENTATION
FINISH: POWDER COAT - PLEASE ADVISE COLOR
TENON: 2" NPT X 1" LONG NIPPLE (TO ACCEPT VERTICAL ALIGNMENT COUPLING)
MODIFIER: 7-PIN TWIST LOCK DIMMING RECEPTACLE
CATALOG NO. AARTMB-1S-72-TN2.38/1.00-TR7P-CU

PEDESTRIAN LUMINAIRE SPECIFICATIONS:

STYLE: LECHMERE
HEIGHT: 2'-4 7/16"
WIDTH: 2'-9" DIAMETER
MATERIAL: CAST ALUMINUM ALLOY ANSI 356 PER A.S.T.M. B26-95
FINISH: POWDER COAT - PLEASE ADVISE COLOR
LAMPING: 40 WATT LED
VOLTAGE: ELECTRONIC WIRED AT 120-277 VOLTS
COLOR TEMP: 2700K (WARM WHITE)
DISTRIBUTION: TYPE III (ASYMMETRIC) - REFRACTIVE OPTICS
GLOBE: 110 STIPPLED POLYCARBONATE
MODIFIER: VERTICAL ALIGNMENT COUPLING, SMALL SHADE
CATALOG NO. ALMLCH-LE040/EVX/X2-27-CR3-PS10-LAVBC-M_-CU

PEDESTRIAN CROSS ARM SPECIFICATIONS:

STYLE: TIMBER CROSS ARM
WIDTH: 3'-0" FROM C OF POST TO C OF LUMINAIRE
MATERIAL: 2" SCH-40 ALUMINUM PIPE WITH CAST ALUMINUM ORNAMENTATION
FINISH: POWDER COAT - PLEASE ADVISE COLOR
TENON: 2" NPT X 1" LONG NIPPLE (TO ACCEPT VERTICAL ALIGNMENT COUPLING)
MODIFIER: 7-PIN TWIST LOCK DIMMING RECEPTACLE
CATALOG NO. AARTMB-1S-36-TN2.38/1.00-TR7P-CU



Spring City Electrical Mfg. Co.
HALL AND MAIN STREETS - P.O. BOX 19 - SPRING CITY, PA. 19475
PHONE (610) 948-4000 - FAX (610) 948-5577 - WWW.SPRINGCITY.COM

DESCRIPTION	MANCHESTER LIGHTING CONCEPTS FOR RICHMOND, VIRGINIA		
CUSTOMER	KIMLEY HORN		
JOB	RICHMOND VIRGINIA		
SCALE	DRAWN BY:	DATE	SPEC NO.
N.T.S.	MWG	09-19-2017	S103610

Schematic: Existing Wood Poles to be Utilized for Decorative Fixture



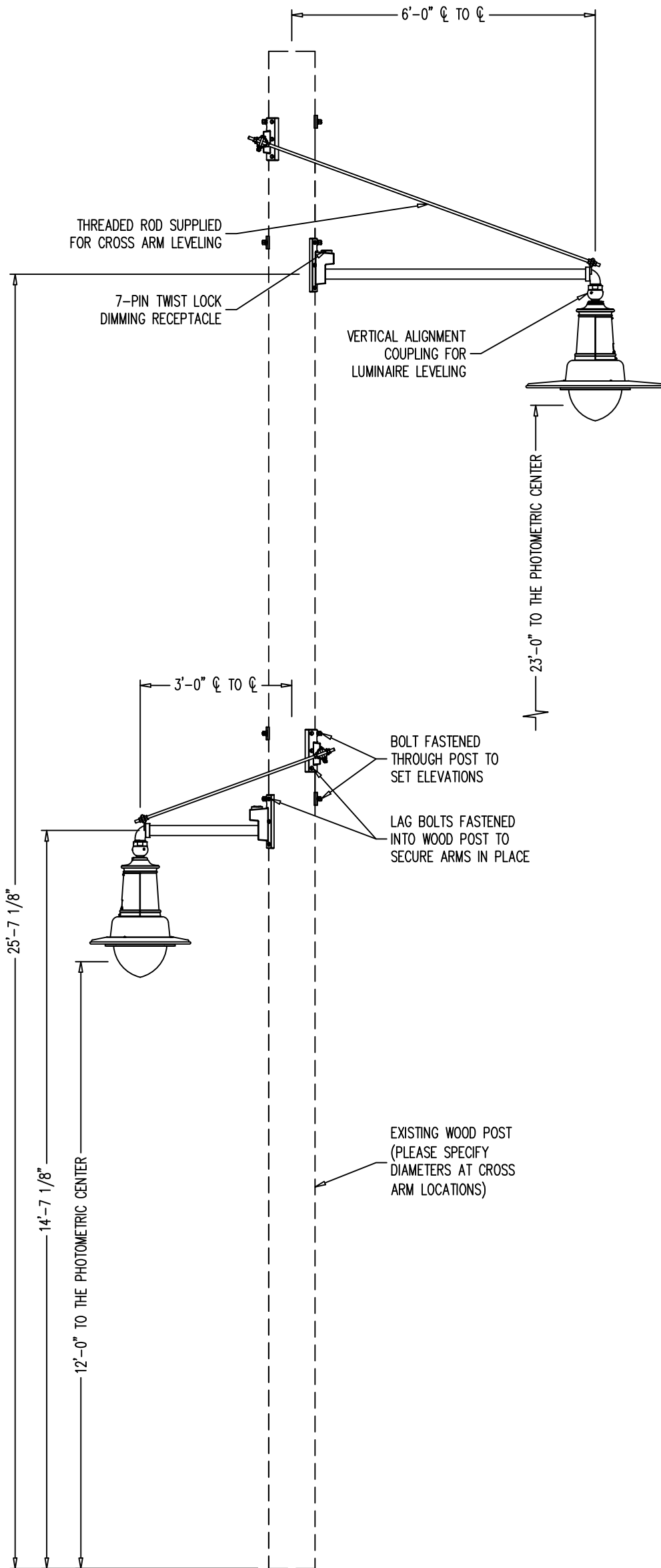
Schematic: Existing Wood Poles to be Utilized for Decorative Fixture



Schematic: Existing Wood Poles to be Utilized for Decorative Fixture



This drawing is property of Spring City Elect. Mfg. and is issued to the recipient with the understanding that it shall not be copied, duplicated, passed on to unauthorized parties, nor used for any purpose other than that for which it is specifically furnished except with Spring City's written permission.



ROADWAY LUMINAIRE SPECIFICATIONS:

STYLE: LECHMERE
 HEIGHT: 2'-4 7/16"
 WIDTH: 2'-9" DIAMETER
 MATERIAL: CAST ALUMINUM ALLOY ANSI 356 PER A.S.T.M. B26-95
 FINISH: POWDER COAT - PLEASE ADVISE COLOR
 LAMPING: 120 WATT LED
 VOLTAGE: ELECTRONIC WIRED AT 120-277 VOLTS
 COLOR TEMP: 2700K (WARM WHITE)
 DISTRIBUTION: TYPE III (ASYMMETRIC) - REFRACTIVE OPTICS
 GLOBE: 110 STIPPLED POLYCARBONATE
 MODIFIER: VERTICAL ALIGNMENT COUPLING

CATALOG NO. ALMLCH-LE120/EVX/X2-27-CR3-PS10-LAVBC-CU

ROADWAY CROSS ARM SPECIFICATIONS:

STYLE: TIMBER CROSS ARM
 WIDTH: 6'-0" FROM ϕ OF POST TO ϕ OF LUMINAIRE
 MATERIAL: 2" SCH-40 ALUMINUM PIPE WITH CAST ALUMINUM ORNAMENTATION
 FINISH: POWDER COAT - PLEASE ADVISE COLOR
 TENON: 2" NPT X 1" LONG NIPPLE (TO ACCEPT VERTICAL ALIGNMENT COUPLING)
 MODIFIER: 7-PIN TWIST LOCK DIMMING RECEPTACLE

CATALOG NO. AARTMB-1S-72-TN2.38/1.00-TR7P-CU

PEDESTRIAN LUMINAIRE SPECIFICATIONS:

STYLE: LECHMERE
 HEIGHT: 2'-4 7/16"
 WIDTH: 2'-0" DIAMETER
 MATERIAL: CAST ALUMINUM ALLOY ANSI 356 PER A.S.T.M. B26-95
 FINISH: POWDER COAT - PLEASE ADVISE COLOR
 LAMPING: 40 WATT LED
 VOLTAGE: ELECTRONIC WIRED AT 120-277 VOLTS
 COLOR TEMP: 2700K (WARM WHITE)
 DISTRIBUTION: TYPE III (ASYMMETRIC) - REFRACTIVE OPTICS
 GLOBE: 110 STIPPLED POLYCARBONATE
 MODIFIER: VERTICAL ALIGNMENT COUPLING, SMALL SHADE

CATALOG NO. ALMLCH-LE040/EVX/X2-27-CR3-PS10-LAVBC-M_-CU

PEDESTRIAN CROSS ARM SPECIFICATIONS:

STYLE: TIMBER CROSS ARM
 WIDTH: 3'-0" FROM ϕ OF POST TO ϕ OF LUMINAIRE
 MATERIAL: 2" SCH-40 ALUMINUM PIPE WITH CAST ALUMINUM ORNAMENTATION
 FINISH: POWDER COAT - PLEASE ADVISE COLOR
 TENON: 2" NPT X 1" LONG NIPPLE (TO ACCEPT VERTICAL ALIGNMENT COUPLING)
 MODIFIER: 7-PIN TWIST LOCK DIMMING RECEPTACLE

CATALOG NO. AARTMB-1S-36-TN2.38/1.00-TR7P-CU



Spring City Electrical Mfg. Co.

HALL AND MAIN STREETS - P.O. BOX 19 - SPRING CITY, PA. 19475
 PHONE (610) 948-4000 - FAX (610) 948-5577 - WWW.SPRINGCITY.COM

DESCRIPTION	THE TIMBER BOLT-ON CROSS ARM WITH THE LECHMERE LED LUMINAIRE		
CUSTOMER	RICHMOND, VA		
JOB	RICHMOND, VA		
SCALE	DRAWN BY:	DATE	SPEC NO.
N.T.S.	MWG	09-19-17	S103609