

James River Branch Trail



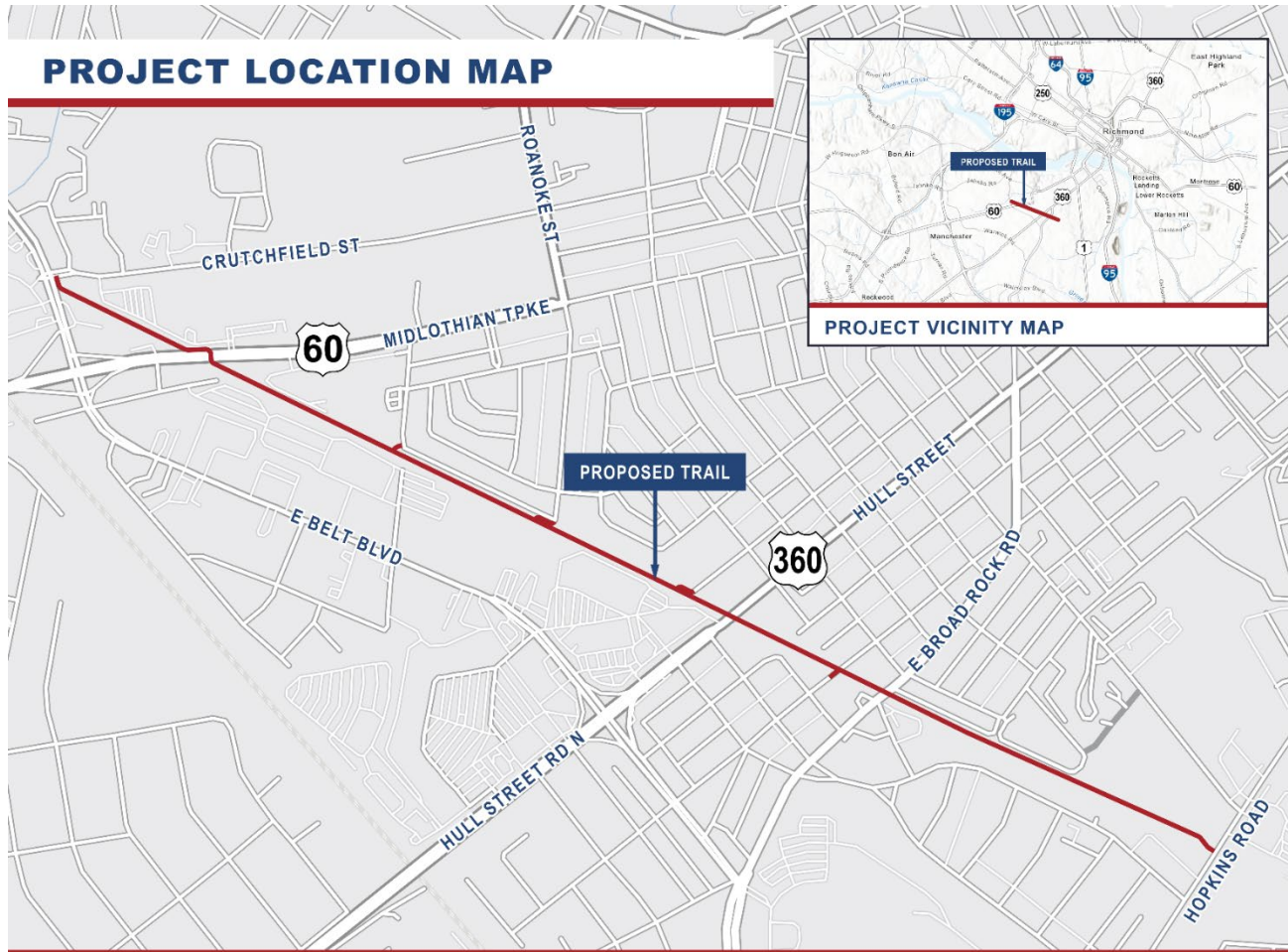
City Planning Commission Meeting

April 16, 2024



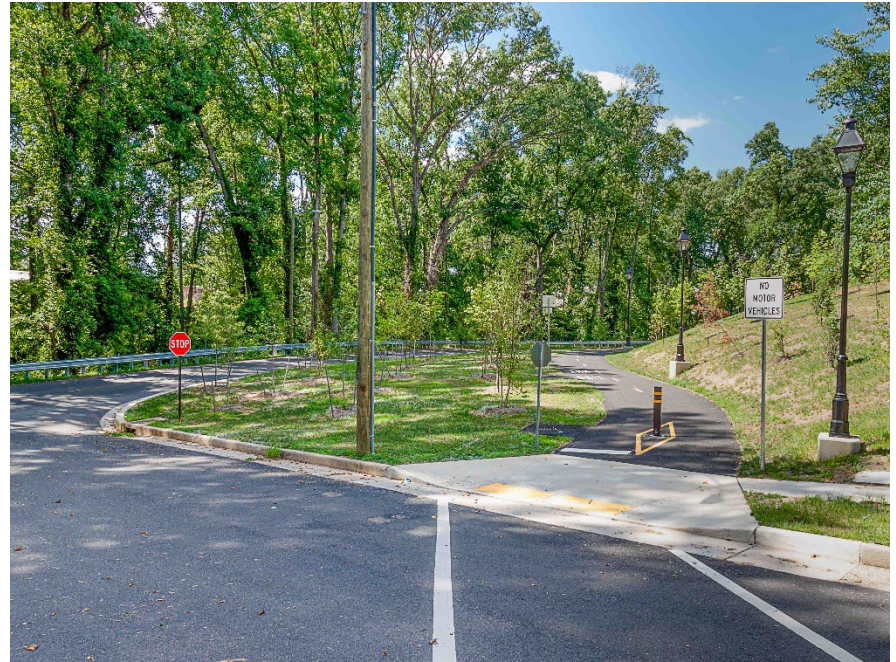
Trail Purpose & Location

- Connect neighborhoods, schools, & businesses
- Located in abandoned CSX railway bed



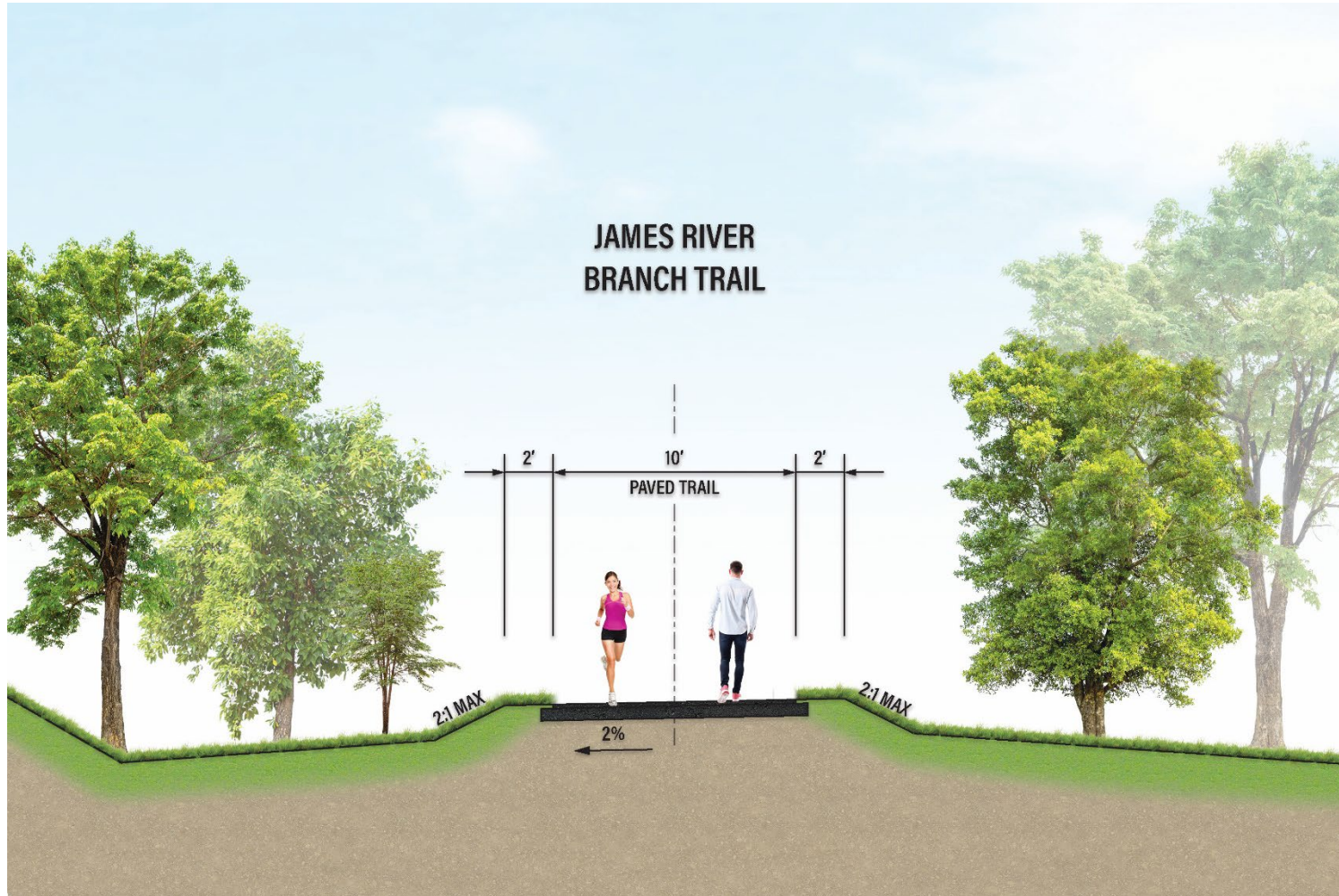
Trail Design Information

- 10-ft wide paved multi-use trail
 - 2-foot graded shoulders
- Approx. 2 miles long
 - Westover Hills Boulevard to Hopkins Road
- Primarily follows existing topography

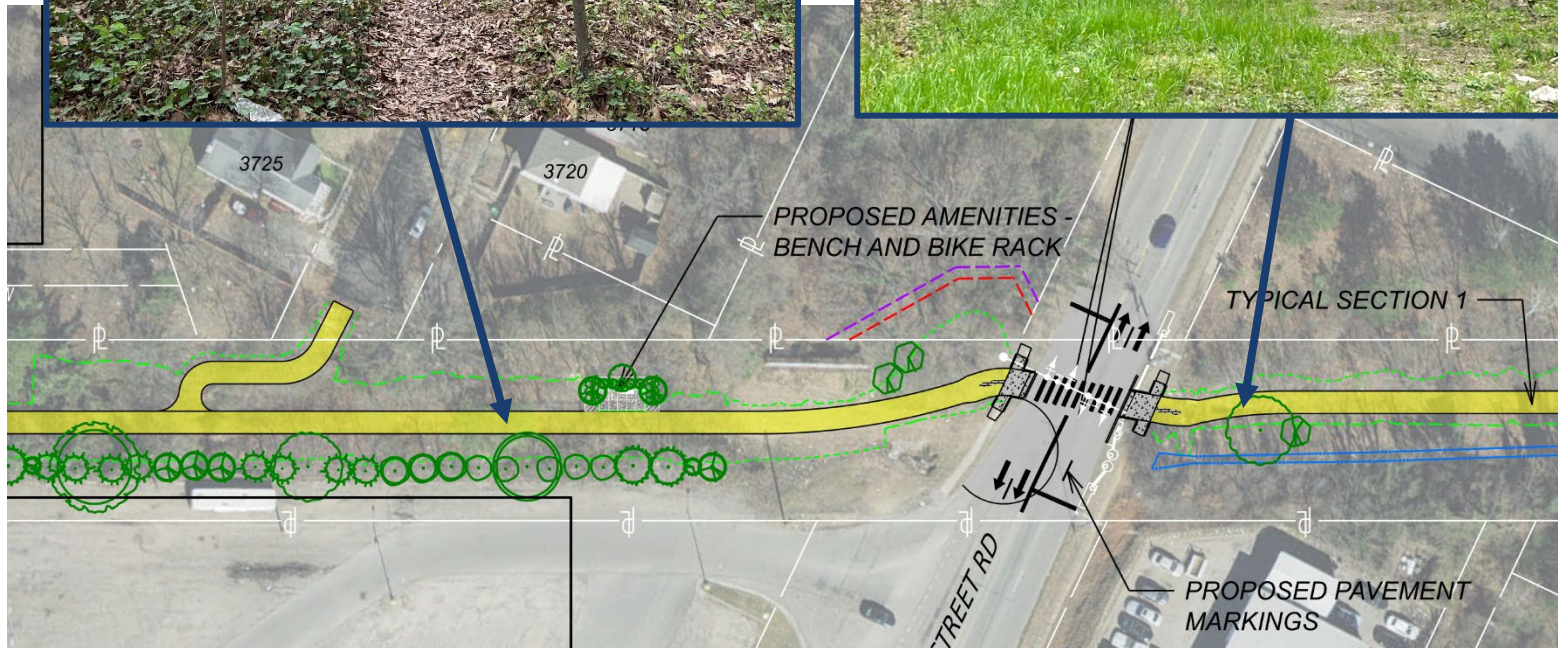
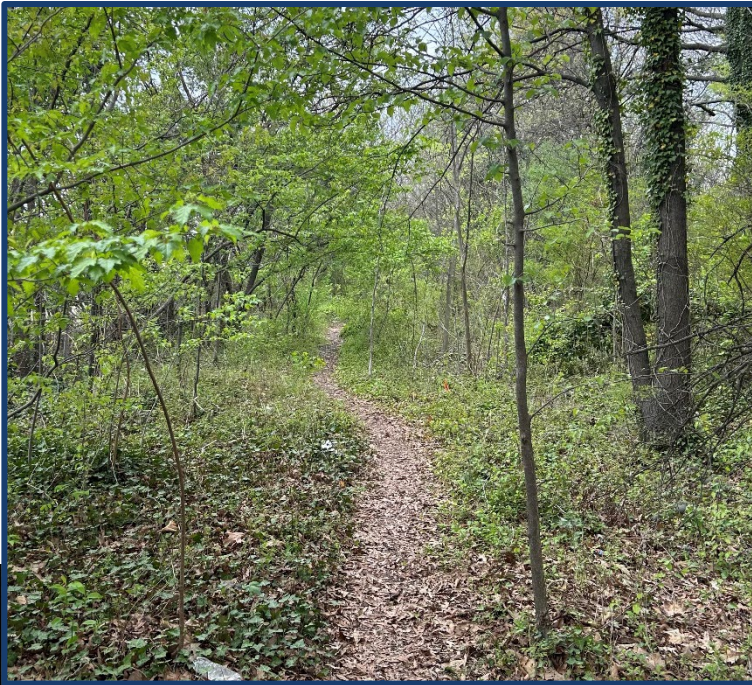


Cannon Creek Trail intersection

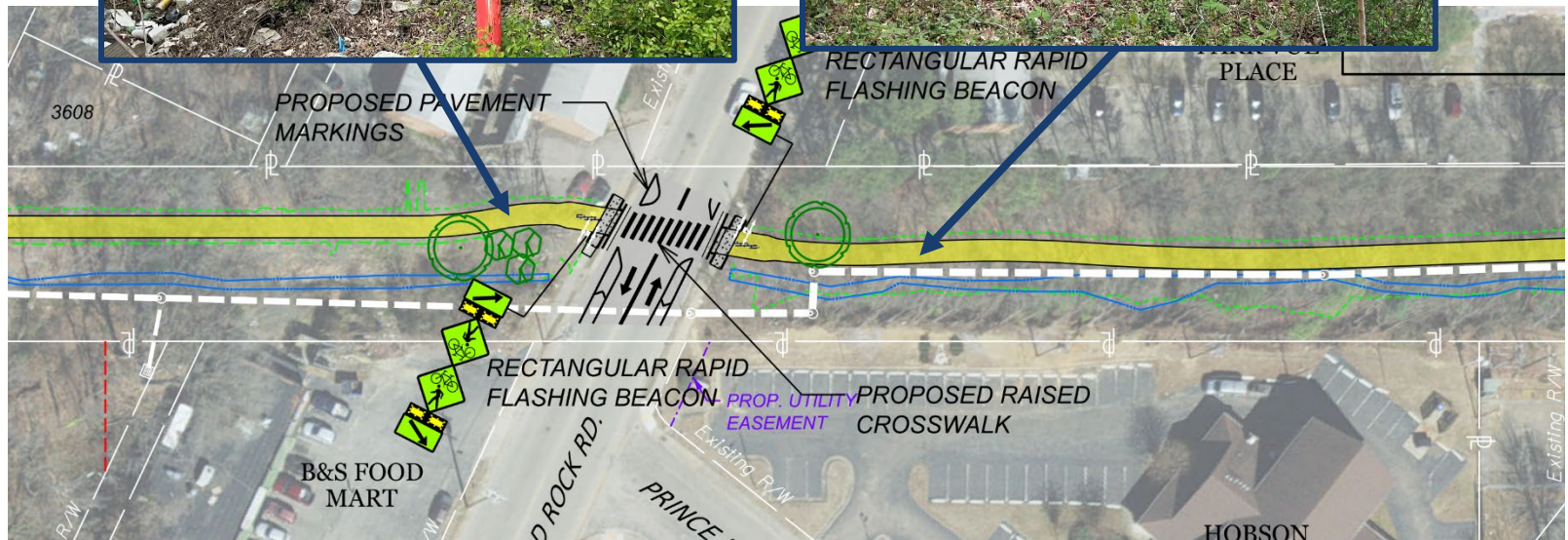
Trail Typical Section



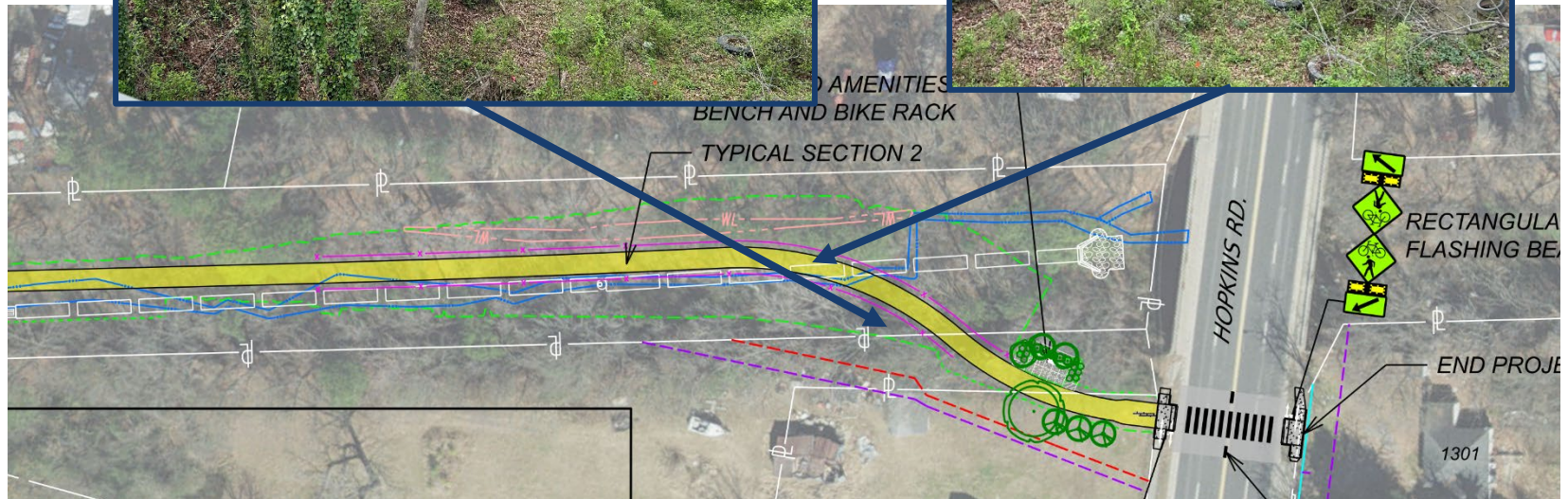
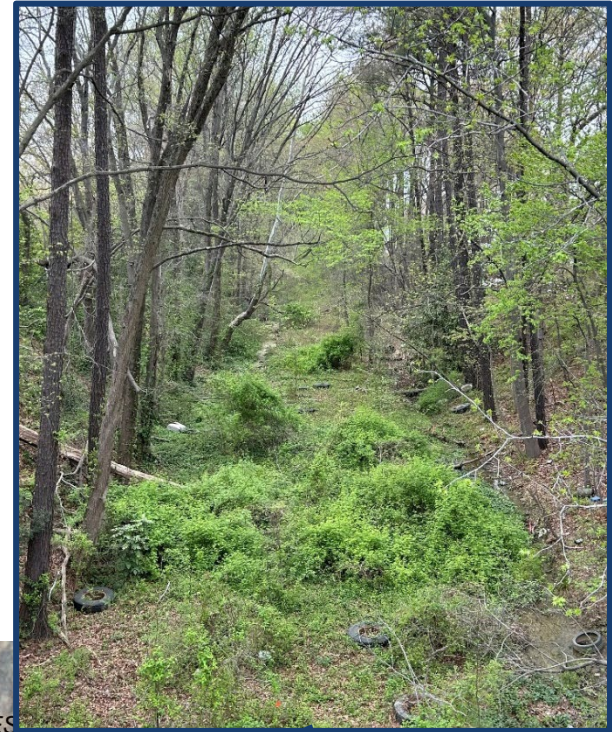
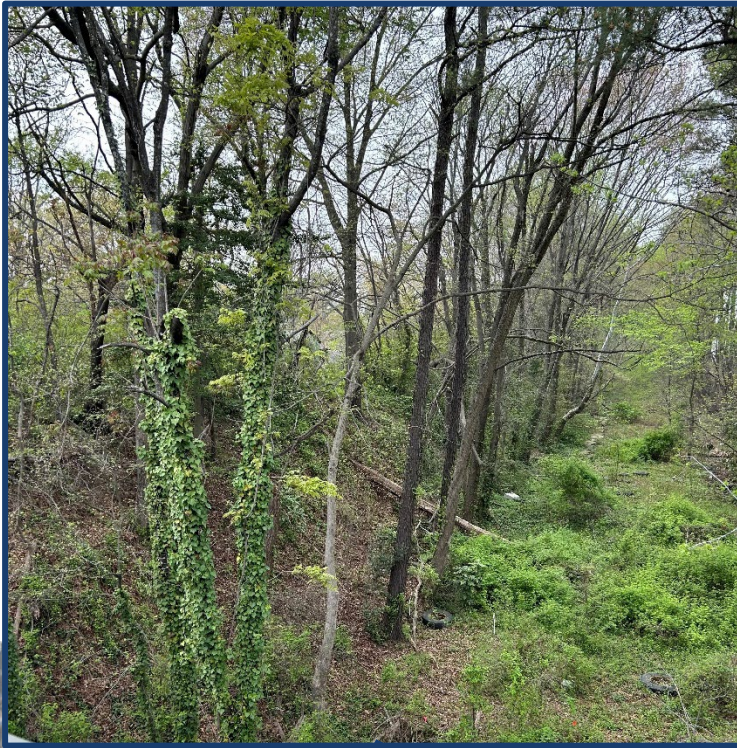
Trail Plan & Existing Conditions



Trail Plan & Existing Conditions

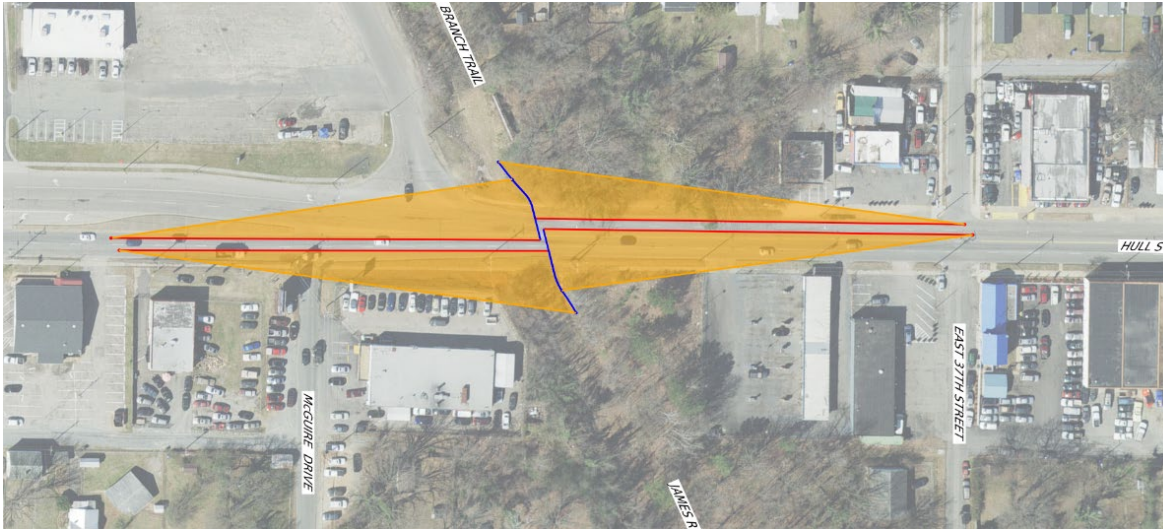


Trail Plan & Existing Conditions



Trail Design Features

- Intersection Safety
 - Trail signing
 - Clear intersection sight triangles
 - Proposed street lighting at intersections
 - Connections to existing adjacent sidewalks
 - Pedestrian crossing evaluation



Trail Design Features

- Pedestrian Roadway Crossings
 - Two Rectangular Rapid Flashing Beacons (RRFB)
 - Three Pedestrian Hybrid Beacons (PHB)
 - Other traffic calming features: raised crosswalk, lane reduction on Midlothian Turnpike



Pedestrian Hybrid Beacon at Grove Ave and Somerset Ave

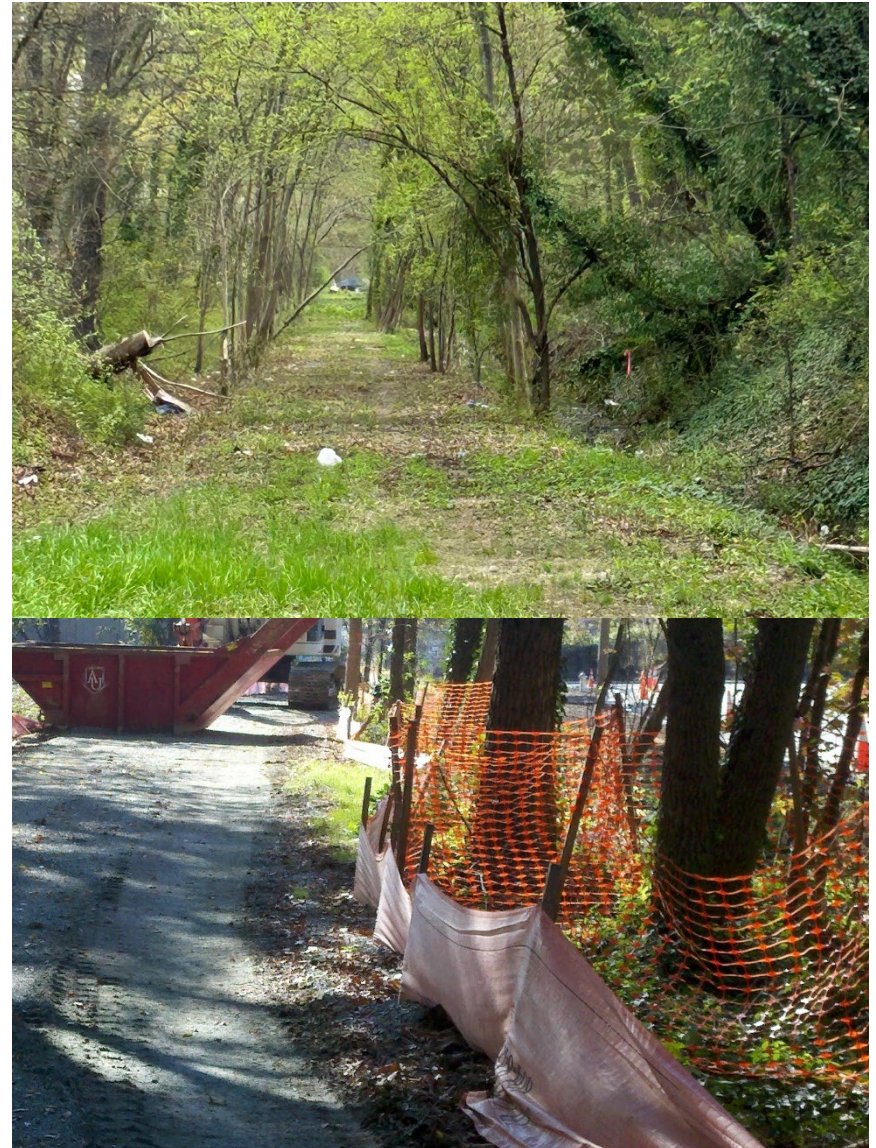
Trail Design Features

- Landscaping & Trail Amenities
 - Plantings at trail and roadway intersections
 - Benches, trash cans, and bike racks at trail entry points
 - Tree protection
 - Root barriers along trail



Trail Design Features

- Tree Impact
 - Site assessment of existing trees
 - Tree removal minimized with trail alignment and tree protection fence
 - Center of corridor where trail is mostly located is clear of existing trees
 - Tree removal primarily at intersections & Hopkins Road terminus
 - Alignment adjustments to save mature trees where possible



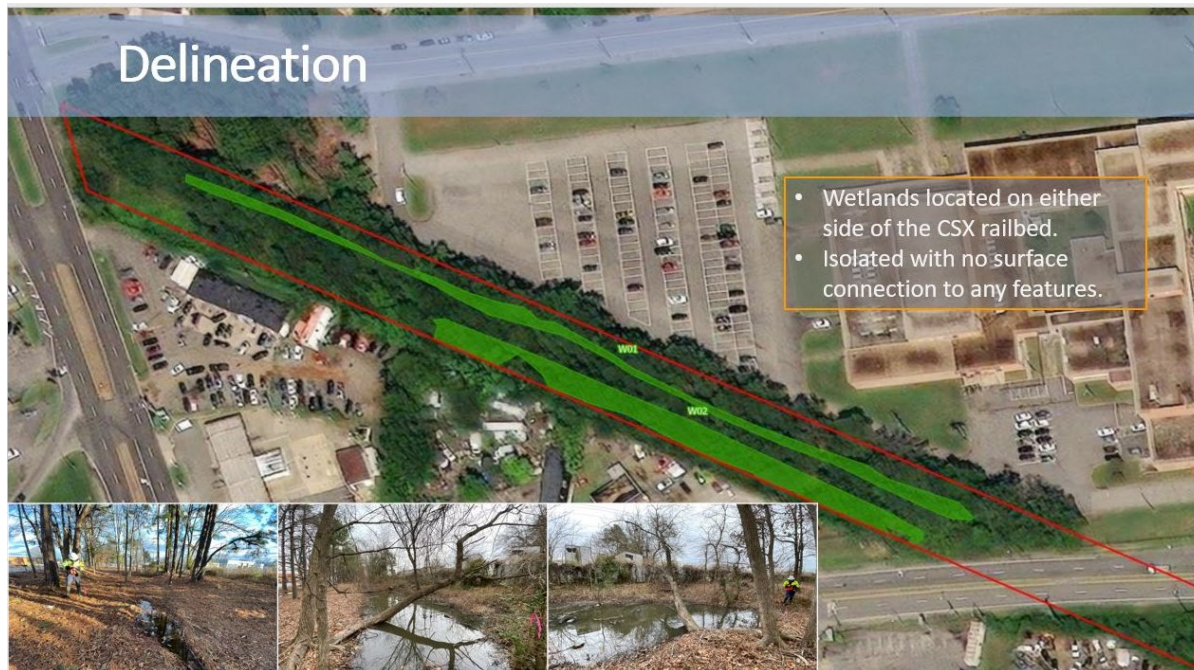
Trail Design Features

- Proposed Landscaping
 - Native species
 - Installing 34 shade trees, 90 ornamental trees, 70 evergreen trees
 - 194 total trees
 - 176” total caliper
 - City Urban Forestry reviewed and accepts the proposed landscaping

QTY	SYM	SCIENTIFIC NAME	COMMON NAME	COND.	SIZE	SPACING	HT. x SPR.
Shade Trees							
10	BND	<i>Betula nigra</i> 'Dura Heat'	Dura Heat River Birch	B&B	12-14'	AS SHOWN	60' x 40'
9	LSR	<i>Liquidambar styraciflua</i> 'Rotundiloba'	Seedless Sweetgum	B&B	2.5"-3" CAL.	AS SHOWN	70' x 50'
8	NSB	<i>Nyssa sylvatica</i>	Black Gum	B&B	2.5"-3" CAL.	AS SHOWN	45' x 25'
7	QCS	<i>Quercus coccinea</i>	Scarlet Oak	B&B	2.5"-3" CAL.	AS SHOWN	70' x 60'
Ornamental Trees							
21	AAA	<i>Amelanchier arborea</i> 'Autumn Brilliance'	Autumn Brilliance Serviceberry	B&B	8' - 10'	AS SHOWN	20' x 15'
32	CCE	<i>Cercis canadensis</i>	Eastern Redbud	B&B	2"-2.5"	AS SHOWN	25' x 25'
26	CFE	<i>Cornus florida</i>	Flowering Dogwood	B&B	2"-2.5"	AS SHOWN	20' x 15'
11	MVS	<i>Magnolia virginiana</i>	Sweetbay Magnolia	B&B	7'-8'	AS SHOWN	20' x 15'
Evergreen Trees							
26	IOS	<i>Ilex opaca</i> 'Satyr Hill'	Satyr Hill American Holly	B&B	8' - 10'	AS SHOWN	30' x 15'
26	JVE	<i>Juniperus virginiana</i>	Eastern Red Cedar	B&B	8' - 10'	AS SHOWN	30' x 15'
18	MGL	<i>Magnolia grandiflora</i> 'Little Gem'	Little Gem Southern Magnolia	B&B	7'-8'	AS SHOWN	20' x 10'
Evergreen Shrubs							
6	IOJ	<i>Ilex opaca</i> 'Jersey King'	Jersey King Holly	#7	8' - 10'	AS SHOWN	4' x 5'
Deciduous Shrubs							
12	CAH	<i>Clethra alnifolia</i> 'Hummingbird'	Hummingbird Summersweet	#3	18"-24"	48" O.C.	4' x 4'
15	HQP	<i>Hydrangea quercifolia</i> 'Pee Wee'	Dwarf Oakleaf Hydrangea	#3	18" - 24"	48" O.C.	4' x 4'
42	IVL	<i>Itea virginica</i> 'Sprich'	Little Henry Virginia Sweetspire	#3	15"-18"	36" O.C.	2' x 3'
5	IVJ	<i>Ilex verticillata</i> 'Jim Dandy'	Dwarf Winterberry Holly	#3	18"-24"	36" O.C.	4' x 4'
20	IVR	<i>Ilex verticillata</i> 'Red Sprite'	Dwarf Winterberry Holly	#3	18"-24"	36" O.C.	3' x 4'
Perennials							
42	NRW	<i>Nepeta racemosa</i> 'Walker's Low'	Walker's Low Catmint	#1	1 GAL	24" O.C.	2 5'

Environmental Considerations

- Streams & Wetlands
 - Avoidance and minimization efforts
 - Alignment & drainage design adjustments to avoid impacts where feasible
- Voluntary Remediation Program
 - Project enrolled in Virginia DEQ Voluntary Remediation Program (VRP)
 - Due diligence to ensure no current or future environmental concerns



On-site wetlands

Public Involvement

- Public Information Meeting 3/25/2024
 - Feedback included:
 - Inclusion of native landscaping
 - Intersection safety
 - Nighttime safety
 - Inclusion of trail amenities



Public Involvement

- Urban Design Committee Meeting held on 4/4/2024
- UDC recommends that the City Planning Commission grant approval with the following considerations:
 - Staff recommends that outdoor lighting be sensitive to light pollution or dark-skies compliant. Proposed lighting will be mounted on both DPU and Dominion poles, and the specifications for each are dark-sky compliant.
 - Staff recommends the Applicant show in the FINAL Plan, a minimum 5ft width for sidewalks crossing the proposed path at street crossings. All sidewalks connecting to the proposed trail are updated to be 5-ft wide at the intersection with the trail.
 - Staff recommends the Applicant show in the FINAL Plan, locations for future signage that labels for drivers the trail crossing, and for trail users the upcoming cross street. Plans are updated with notation to install future wayfinding signs to the project, which will be coordinated by DPR.
 - Staff recommends the Applicant show in the FINAL Plan, space for future small scale landscaping, such as flower and shrubs, at intersections. Plans are updated to show locations at intersections for future small-scale landscaping, which will be coordinated by DPR.
 - Staff recommends the Applicant provide in the FINAL application, a letter from the Department of Public Works stating an intent to repave and otherwise provide necessary minimum improvements to sections of the street where the path branches off. DPW has provided UDC with notice of intent to improve neighborhood street connections which will coordinate with future paving schedule.
 - Concerns pertaining to impact to existing trees and proposed replacement. Visual site assessment conducted on 4/9/24 by DPW & design consultant. Design adjustments where feasible to avoid impact to several larger mature trees. Urban Forestry reviewed landscape plan and accepts proposed native species and installation plan.

Project Budget & Impact

- ARPA funded
- Total budget of \$9M
 - Preliminary Engineering: \$1,100,000
 - Right of Way: \$200,000
 - Construction: \$7,700,000
- Property Impacts
 - 6 parcels impacted
 - At intersections and Hopkins Road terminus
 - Primarily easements to be acquired

Project Schedule





Questions

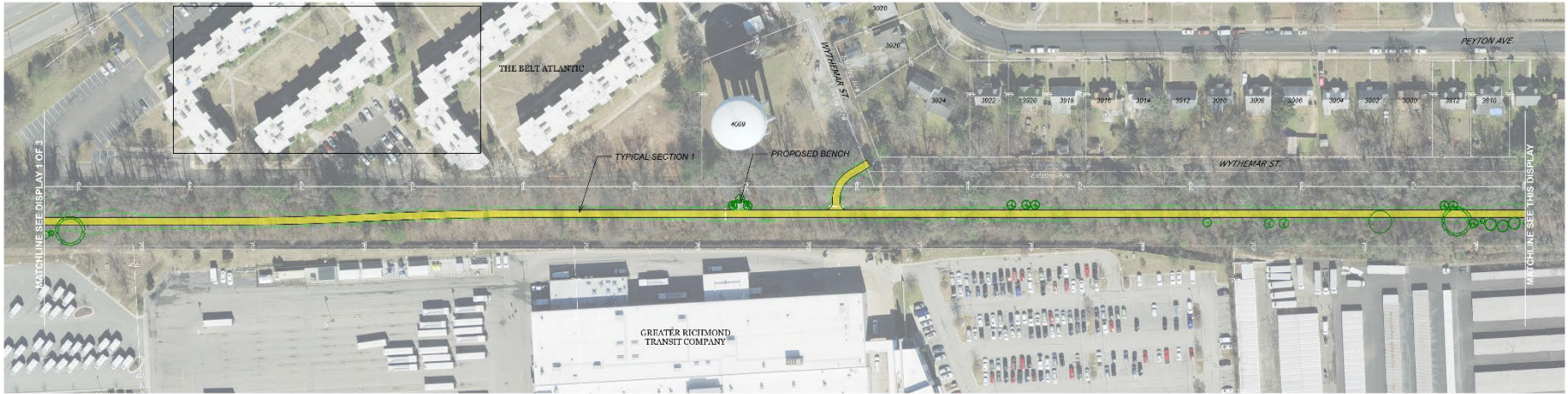
Plan

Public Information Meeting - James River Branch Trail

DISPLAY 2



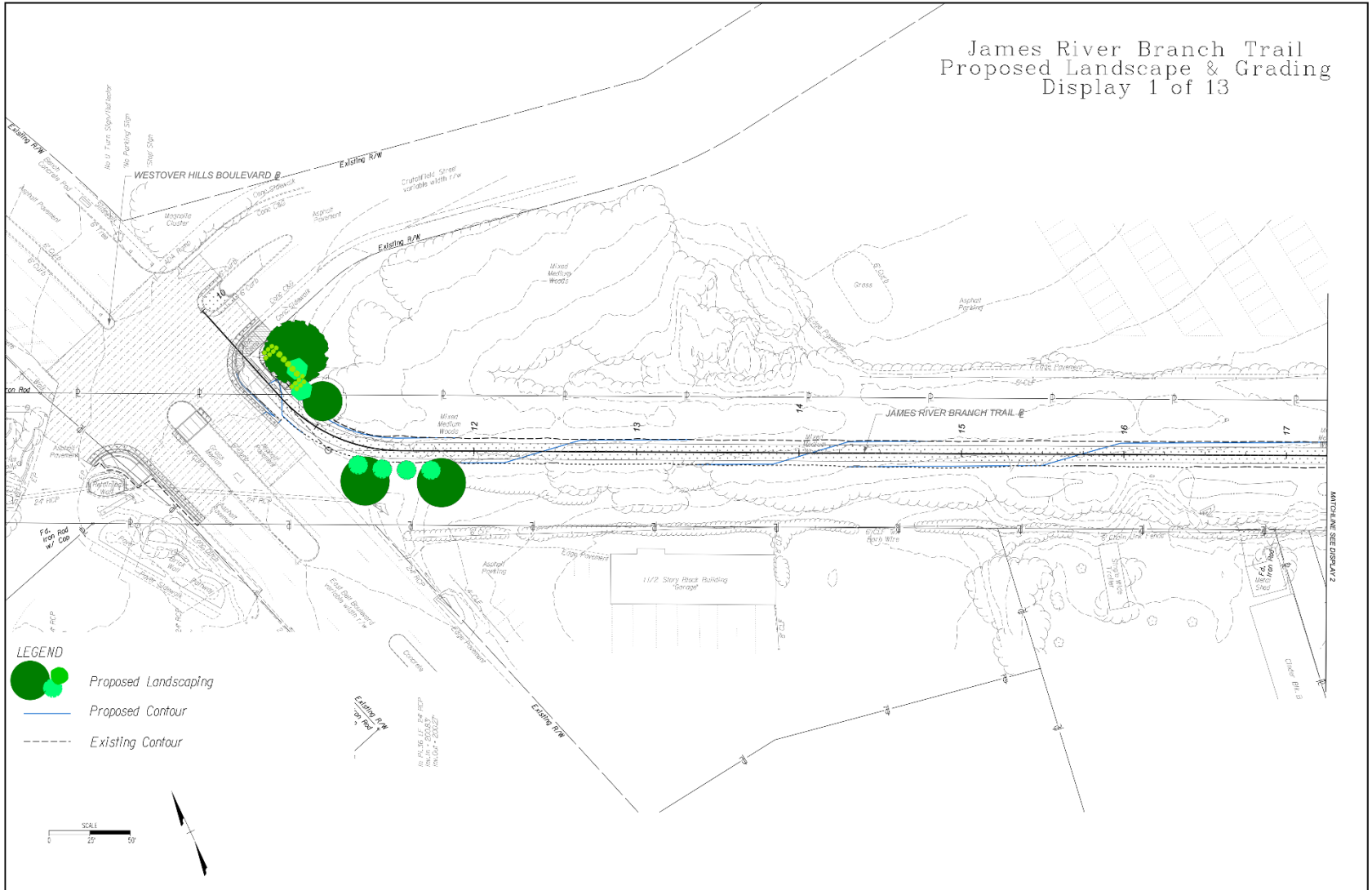
City of Richmond
Department of Public Works
Department of Parks and Recreation



<p>Project Location</p>	<p>Scale and North Arrow</p>	<p>Legend</p> <table border="0"> <tr> <td> Proposed James River Branch Trail (with Lane Pav.)</td> <td> Proposed Concrete</td> <td> Existing Right-of-Way</td> <td> Proposed Right-of-Way Line</td> <td> Proposed Utility Corridor</td> <td> Proposed Stormwater Drainage</td> <td> Proposed Utility Corridor</td> <td> Proposed Utility Corridor</td> </tr> <tr> <td> Proposed Asphalt</td> <td> Proposed Concrete</td> <td> Proposed Utility Corridor</td> <td> Proposed Utility Corridor</td> <td> Proposed Utility Corridor</td> <td> Proposed Utility Corridor</td> <td> Proposed Utility Corridor</td> <td> Proposed Utility Corridor</td> </tr> </table>	Proposed James River Branch Trail (with Lane Pav.)	Proposed Concrete	Existing Right-of-Way	Proposed Right-of-Way Line	Proposed Utility Corridor	Proposed Stormwater Drainage	Proposed Utility Corridor	Proposed Utility Corridor	Proposed Asphalt	Proposed Concrete	Proposed Utility Corridor	Proposed Utility Corridor	Proposed Utility Corridor	Proposed Utility Corridor	Proposed Utility Corridor	Proposed Utility Corridor	<p>Contact Information</p> <p>James River Branch Trail Richmond, Virginia</p> <p>City Council Member: 10000</p> <p>David J. Cline, Jr. City of Richmond 215 Park View Drive Richmond, VA 23220 781-2300</p> <p>©2021 City of Richmond. All rights reserved. No part of this document may be reproduced without the written permission of the City of Richmond.</p>
Proposed James River Branch Trail (with Lane Pav.)	Proposed Concrete	Existing Right-of-Way	Proposed Right-of-Way Line	Proposed Utility Corridor	Proposed Stormwater Drainage	Proposed Utility Corridor	Proposed Utility Corridor												
Proposed Asphalt	Proposed Concrete	Proposed Utility Corridor	Proposed Utility Corridor	Proposed Utility Corridor	Proposed Utility Corridor	Proposed Utility Corridor	Proposed Utility Corridor												

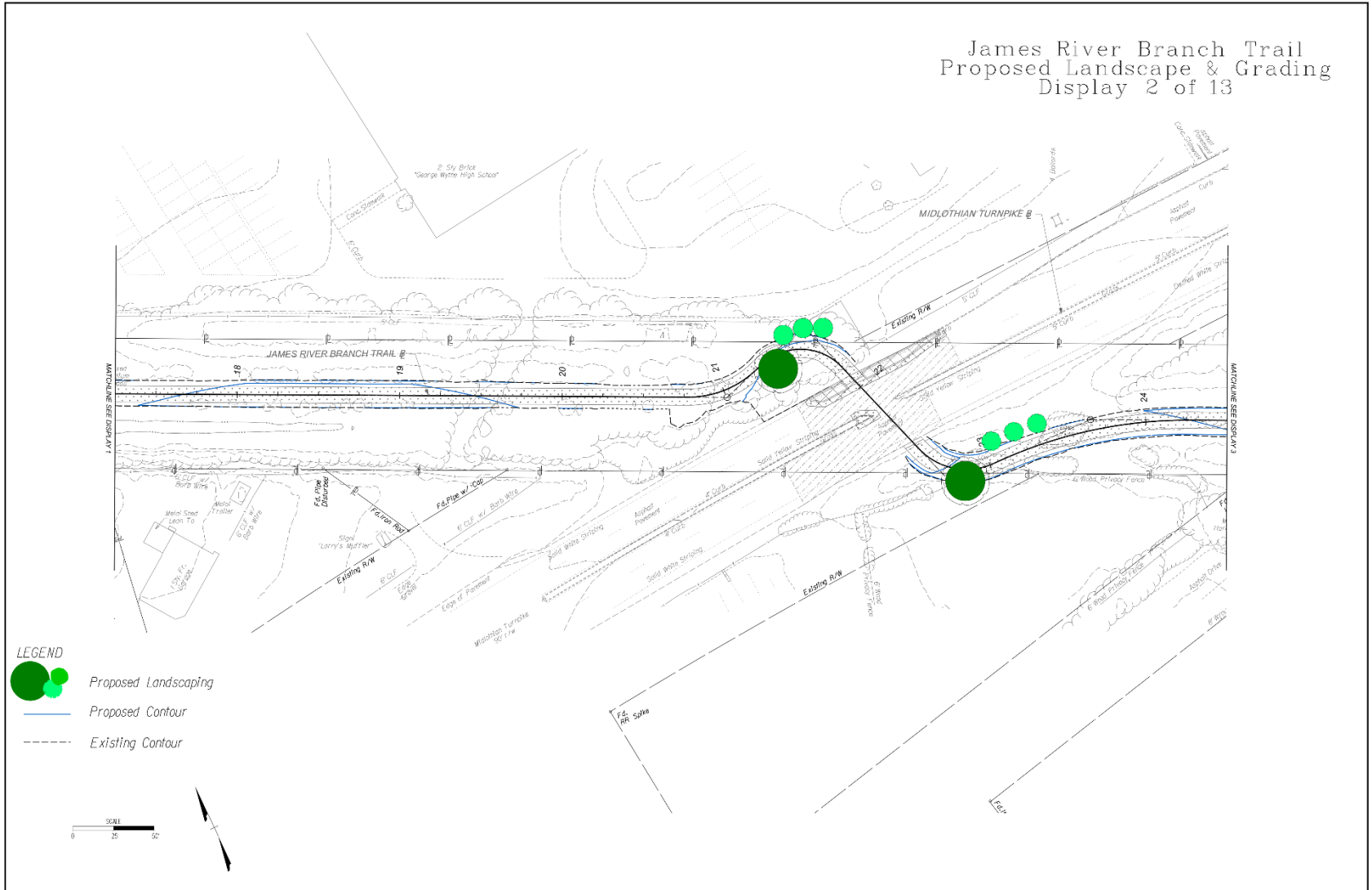
Landscape & Grading Plan

James River Branch Trail Proposed Landscape & Grading Display 1 of 13

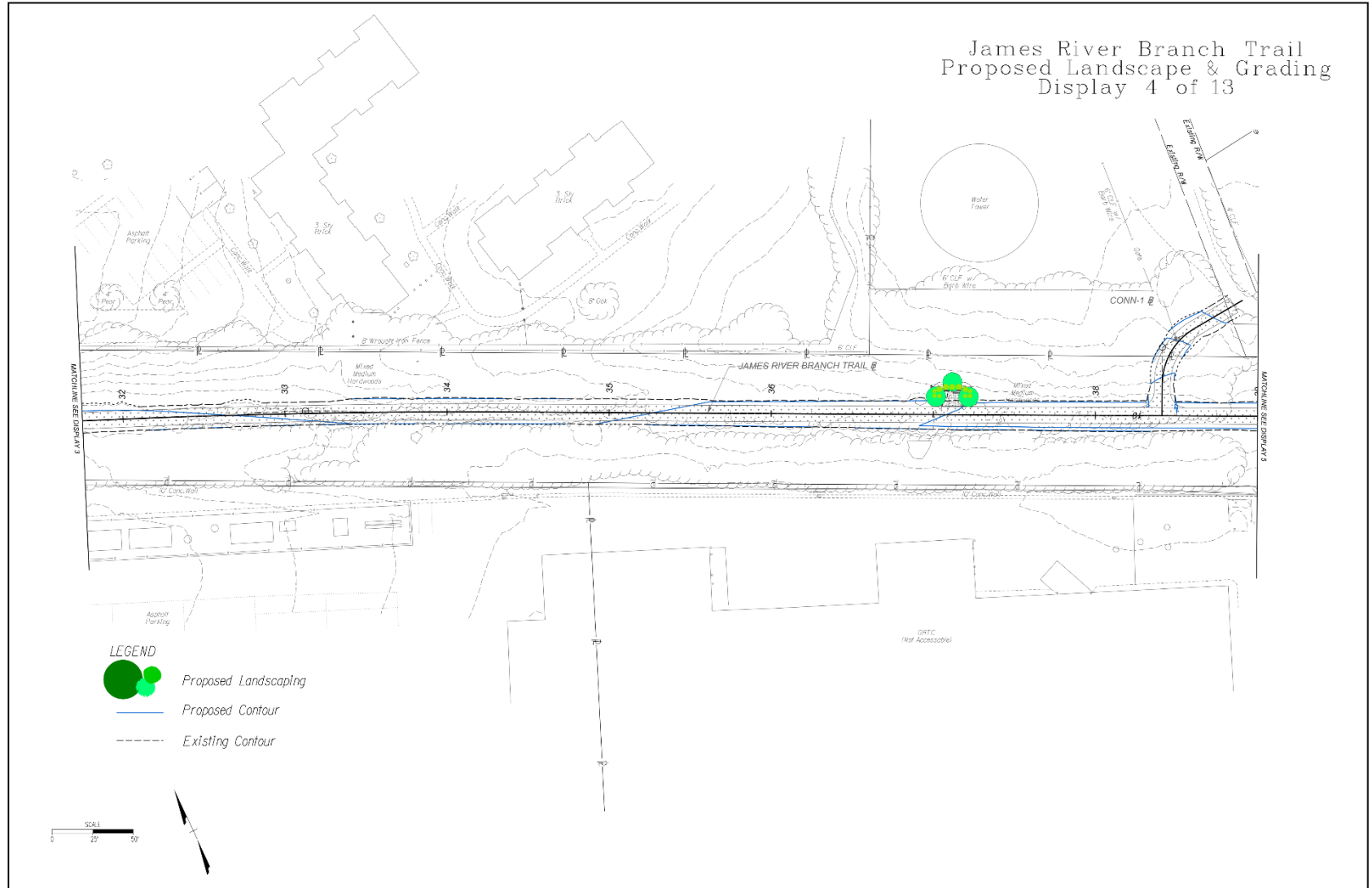


Landscape & Grading Plan

James River Branch Trail Proposed Landscape & Grading Display 2 of 13

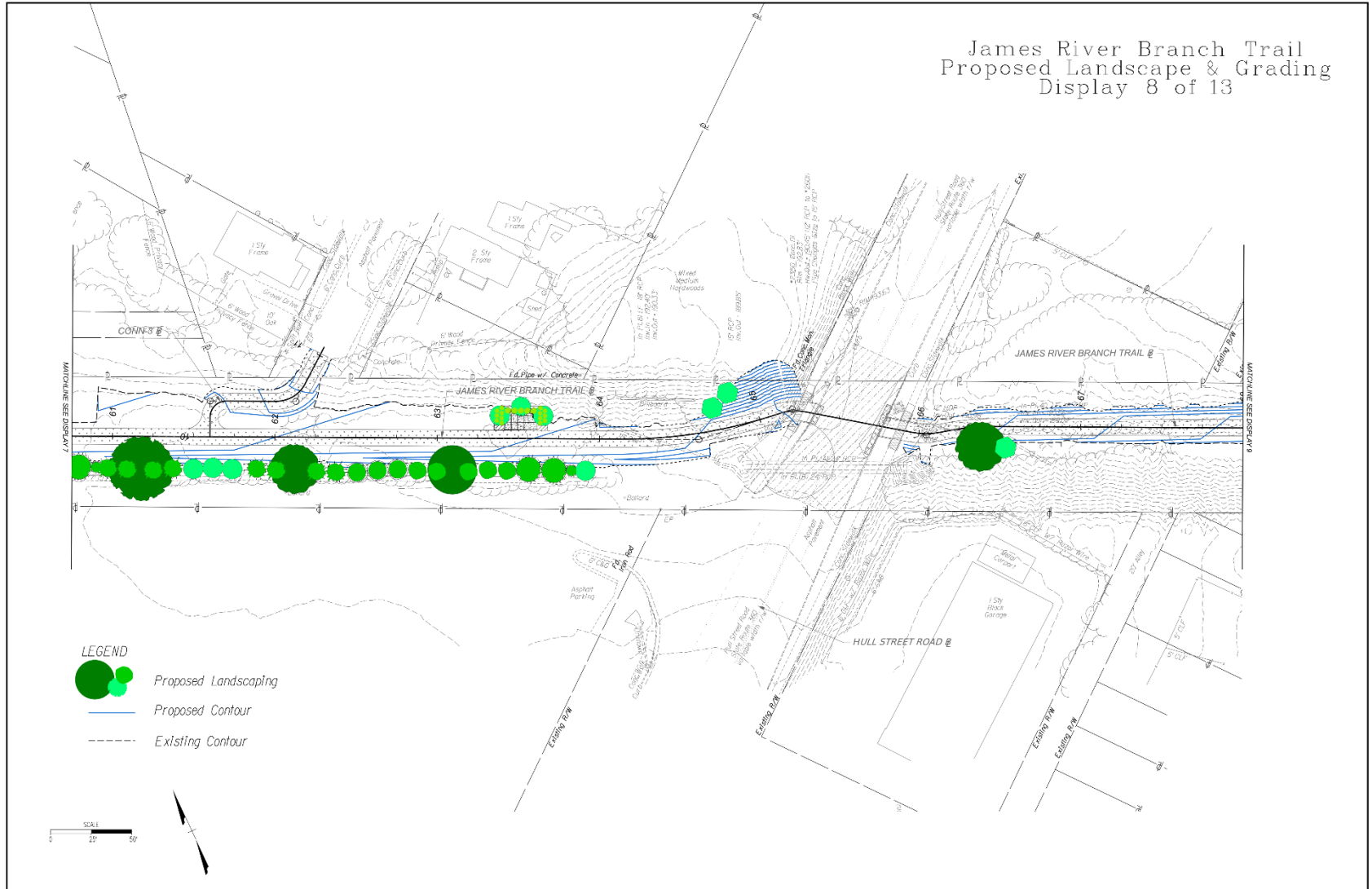


Landscape & Grading Plan



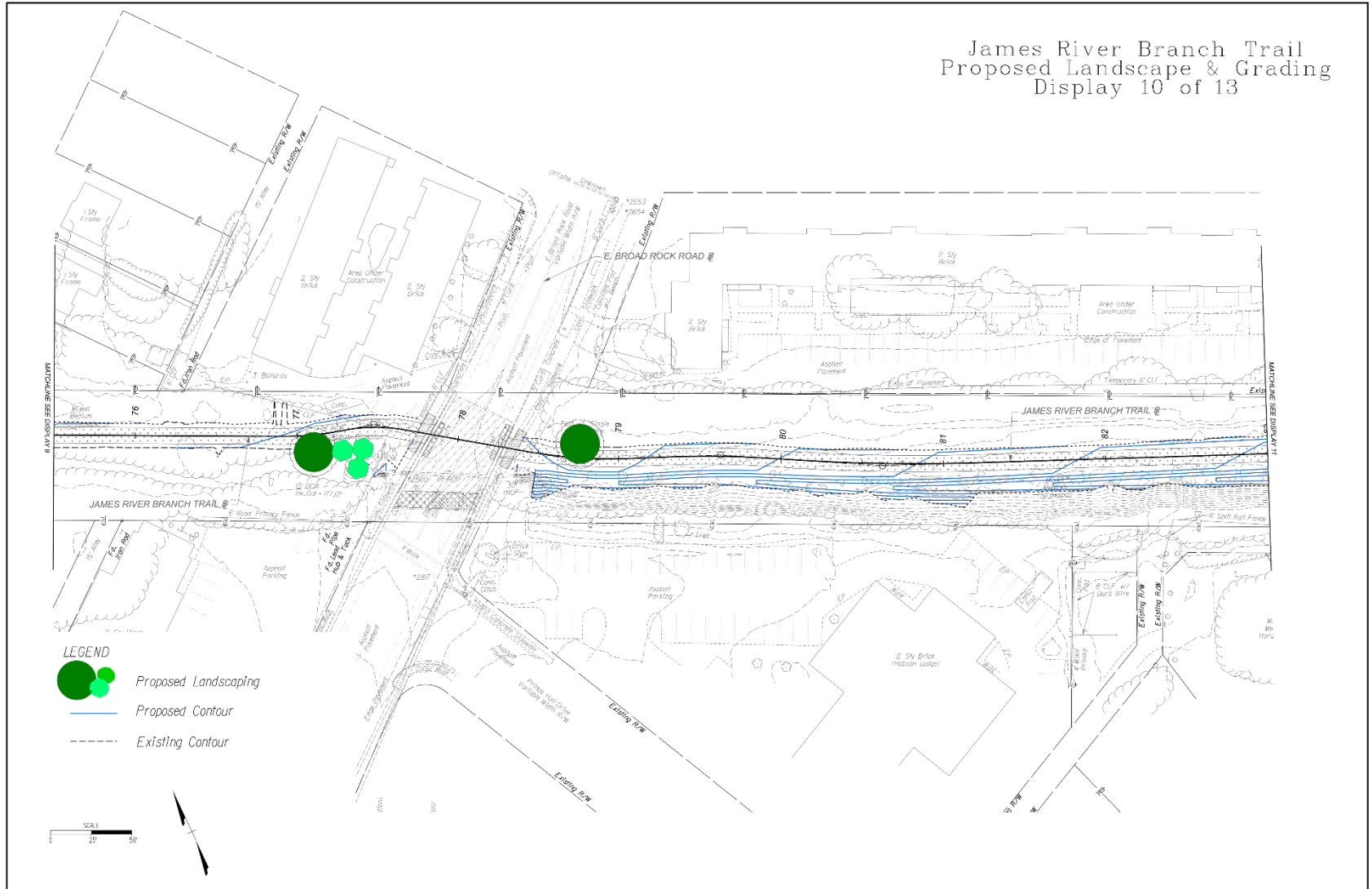
Landscape & Grading Plan

James River Branch Trail
Proposed Landscape & Grading
Display 8 of 13



Landscape & Grading Plan

James River Branch Trail
Proposed Landscape & Grading
Display 10 of 13



Landscape & Grading Plan

