

The image displays two official seals side-by-side. On the left is the Seal of the City of Richmond, featuring a central figure of a person standing on a rock and pointing upwards with a staff, surrounded by stars and the text "CITY OF RICHMOND" and "ESTABLISHED 1737". On the right is the Seal of the Virginia State Police, featuring a central figure of a woman in a red dress holding a scale of justice, surrounded by the text "POLICE", "RICHMOND-VIRGINIA", and "1789".

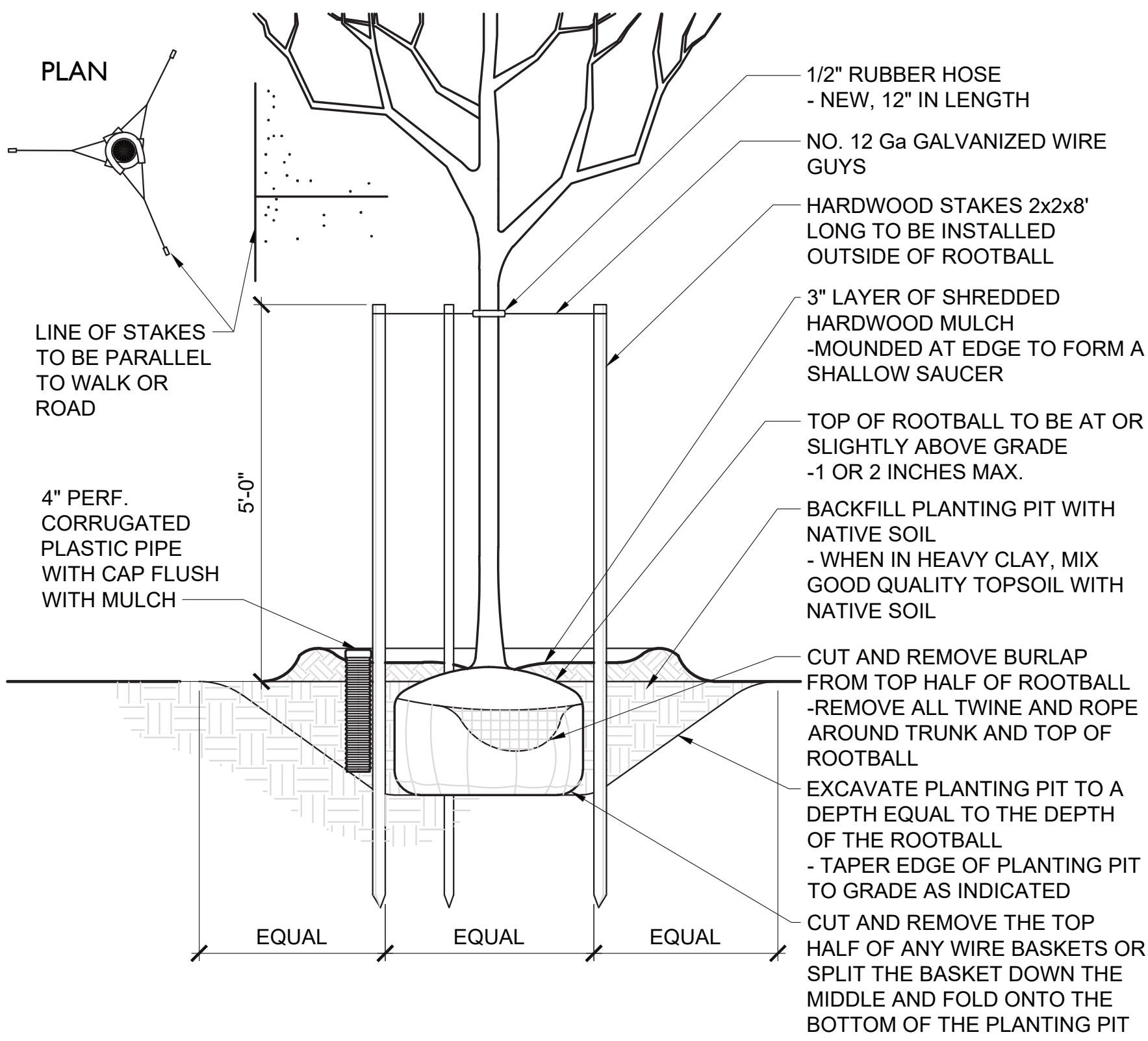


■ PLANT BED MAINTENANCE (SEASONAL WEEDING, PRUNING MULCHING + WATERING FOR ESTABLISHMENT)

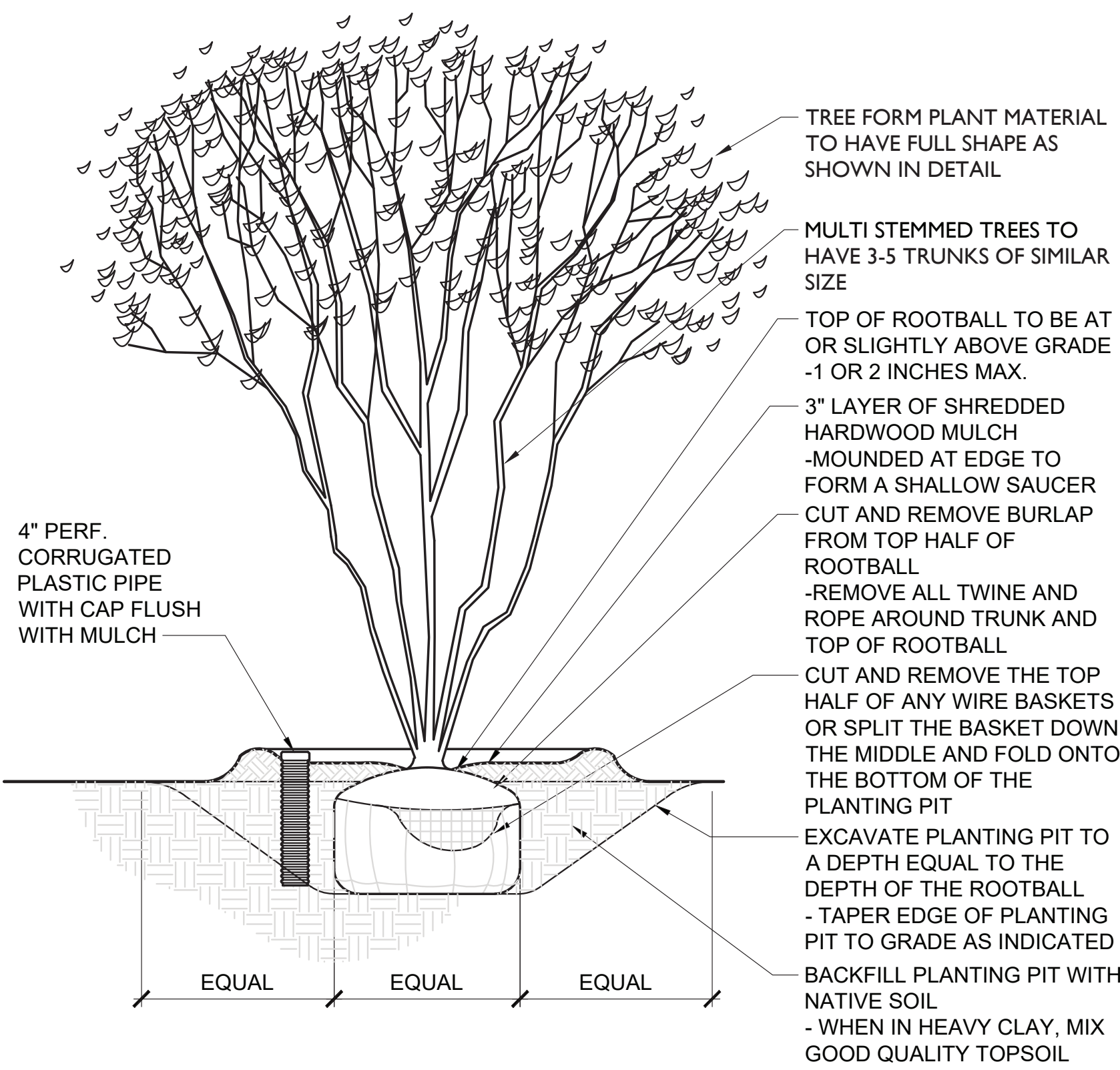
City of Richmond: New Police Station #1



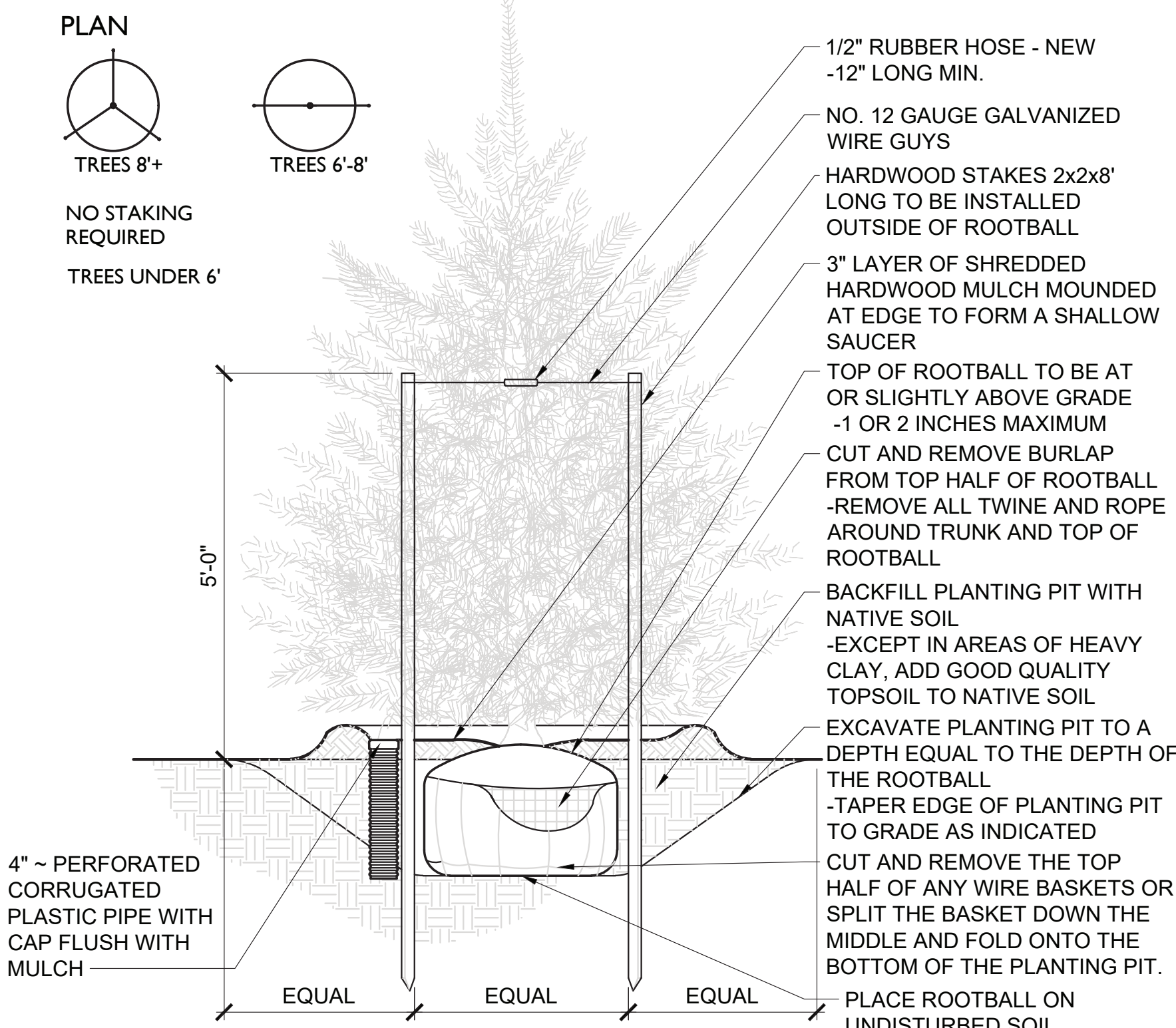
PLANTING DETAILS



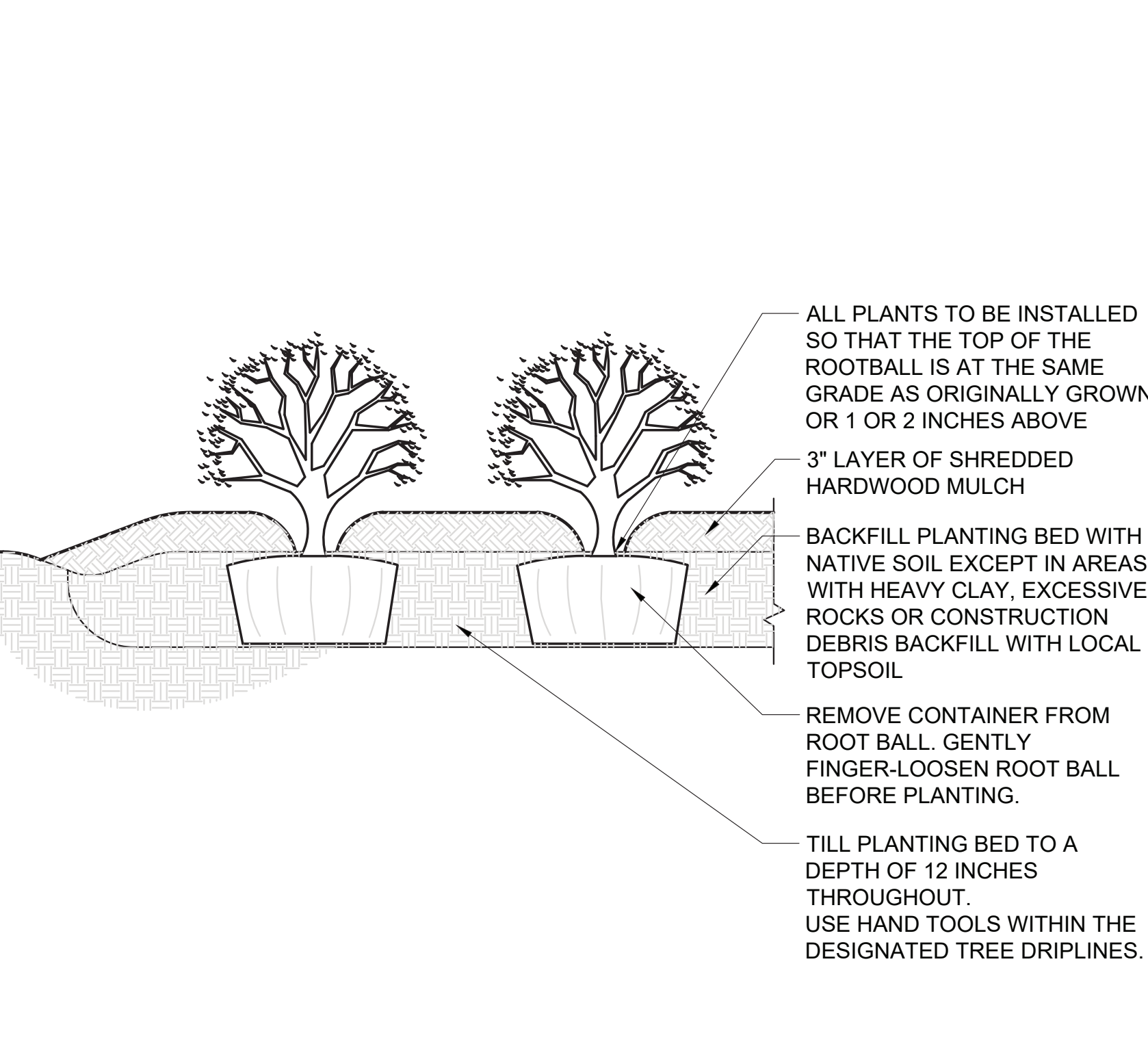
A DECIDUOUS TREE STAKING DETAIL NOT TO SCALE



B MULTI-STEM TREE PLANTING DETAIL NOT TO SCALE



C EVERGREEN TREE STAKING DETAIL NOT TO SCALE

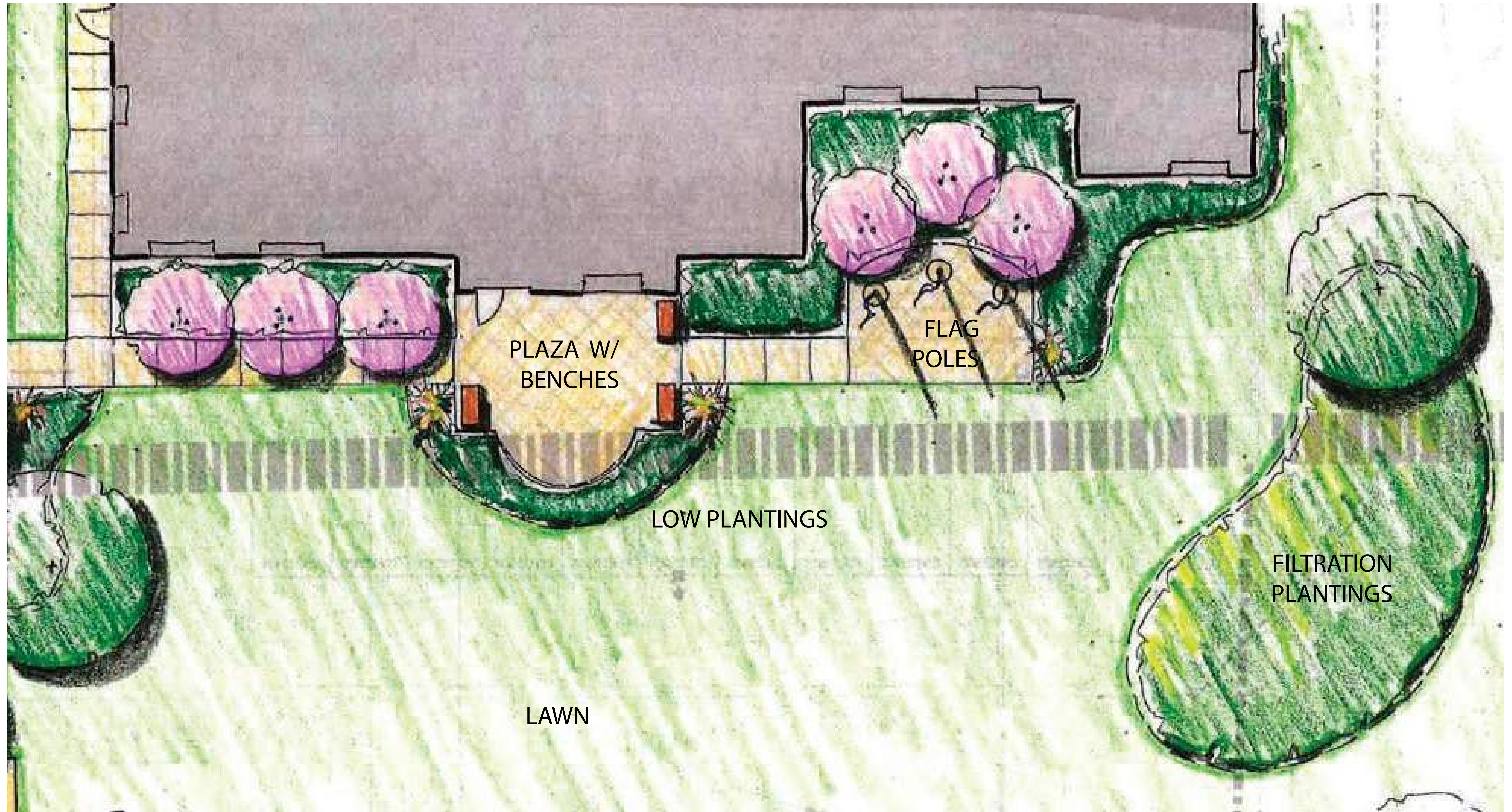


D SHRUB PLANTING DETAIL NOT TO SCALE

PLANT MATERIAL SCHEDULE

TREES	BOTANICAL / COMMON NAME	CONT	CAL	HEIGHT	SPACING	REMARKS
8	ACER RUBRUM 'OCTOBER GLORY' / OCTOBER GLORY RED MAPLE	B&B	2.5"	12 FT, MIN	AS SHOWN	
3	AMELANCHIER X GRANDIFLORA 'AUTUMN BRILLIANCE' / AUTUMN BRILLIANCE APPLE SERVICEBERRY	B&B	2" CAL	8 FT, MIN	AS SHOWN	LIMB UP TO 5'
3	CORNUS KOUSA / KOUSA DOGWOOD	B&B	2" CAL	8 FT, MIN	AS SHOWN	LIMB UP TO 5'
8	NYSSA SYLVATICA 'WILDFIRE' / WILDFIRE TUPELO	B&B	2.5" CAL	12 FT, MIN	AS SHOWN	
8	OSTRYA VIRGINIANA 'JFS-KW5' / AUTUMN TREASURE® AMERICAN HOPHORNBEAM	B&B	2" CAL	8 FT, MIN	AS SHOWN	LIMB UP TO 5'
1	QUERCUS BICOLOR 'GREEN NOVA' / SUN BREAKER® SWAMP WHITE OAK	B&B	2.5" CAL	12 FT, MIN	AS SHOWN	
SHRUBS	BOTANICAL / COMMON NAME	CONT	SIZE	HEIGHT	SPACING	REMARKS
46	ARONIA MELANOCARPA 'UCONNAM165' / LOW SCAPE MOUND® BLACK CHOKEBERRY	#3		12" MIN	AS SHOWN	
32	ILEX GLABRA 'GEM BOX' / GEM BOX INKBERRY HOLLY	#3		18" MIN	AS SHOWN	
28	ILEX GLABRA 'SHAMROCK' / SHAMROCK INKBERRY HOLLY	#3		42" MIN	AS SHOWN	
16	JUNIPERUS HORIZONTALIS 'ANDORRA' / ANDORRA JUNIPER	#3		18" MIN	AS SHOWN	
11	JUNIPERUS VIRGINIANA 'GREY OWL' / GREY OWL EASTERN REDCEDAR	#3		18" MIN	AS SHOWN	
17	PANICUM VIRGATUM 'HEAVY METAL' / HEAVY METAL SWITCH GRASS	#3		18" MIN	AS SHOWN	
9	SPIRAEA JAPONICA 'NCSX1' / DOUBLE PLAY® CANDY CORN® SPIREA	#3		12" MIN	AS SHOWN	
65	SPOROBOLUS HETEROLEPIS / PRAIRIE DROPSEED	#1		12" MIN	AS SHOWN	
43	TAXUS BACCATA 'REPANDENS' / SPREADING ENGLISH YEW	#3		18" MIN	AS SHOWN	
GROUND COVERS	BOTANICAL / COMMON NAME	CONT	SIZE	HEIGHT	SPACING	REMARKS
137 SF	CAREX VULPINOIDEA / FOX SEDGE	#1			18" O.C.	
148 SF	ECHINACEA PURPUREA / CONEFLOWER	#1			18" O.C.	
117 SF	HELIOPSIS HELIANTHOIDES 'INHELSDODR' / TUSCAN GOLD™ FALSE SUNFLOWER	#1			18" O.C.	
23	HOSTA X 'PATRIOT' / PATRIOT HOSTA	#1			24" O.C.	
25	NEPETA X 'CAT'S PAJAMAS' / CAT'S PAJAMAS CATMINT	#1			18" O.C.	
134 SF	PEROVSKIA ATRIPLICIFOLIA 'LISSLITT' / LACEY BLUE RUSSIAN SAGE	#1			18" O.C.	
202 SF	SCHIZACHYRIUM SCOPARIUM 'JAZZ' / JAZZ LITTLE BLUESTEM	#1			18" O.C.	

City of Richmond: New Police Station #1



Entry Plaza Enlargement Plan

UDC Submission

