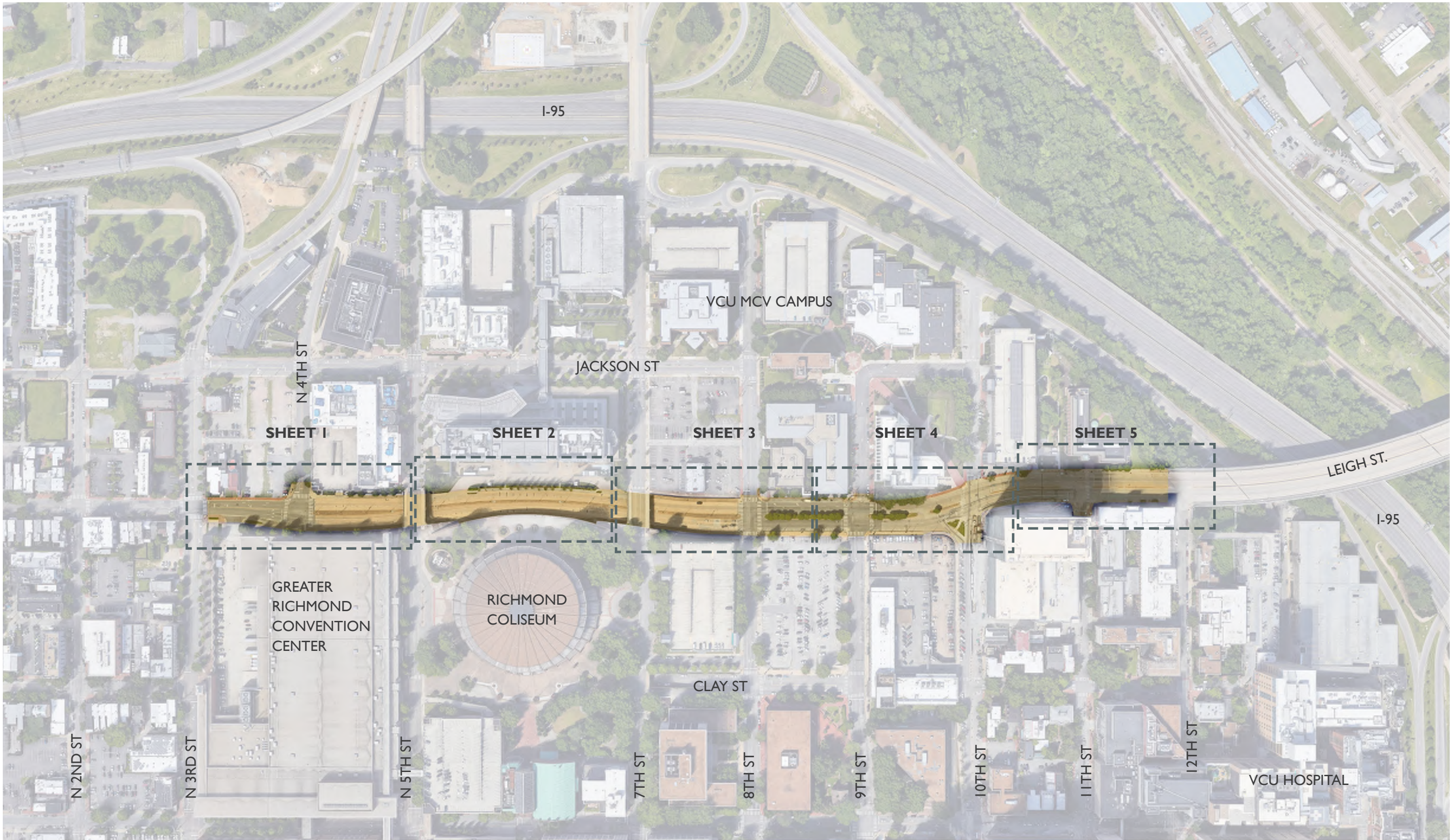




BIOTECH RESEARCH PARK PHASE III - LEIGH STREET STREETScape IMPROVEMENTS PROJECT

UDC CONCEPTUAL REVIEW
OCTOBER 6, 2022



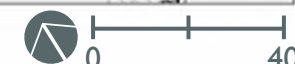
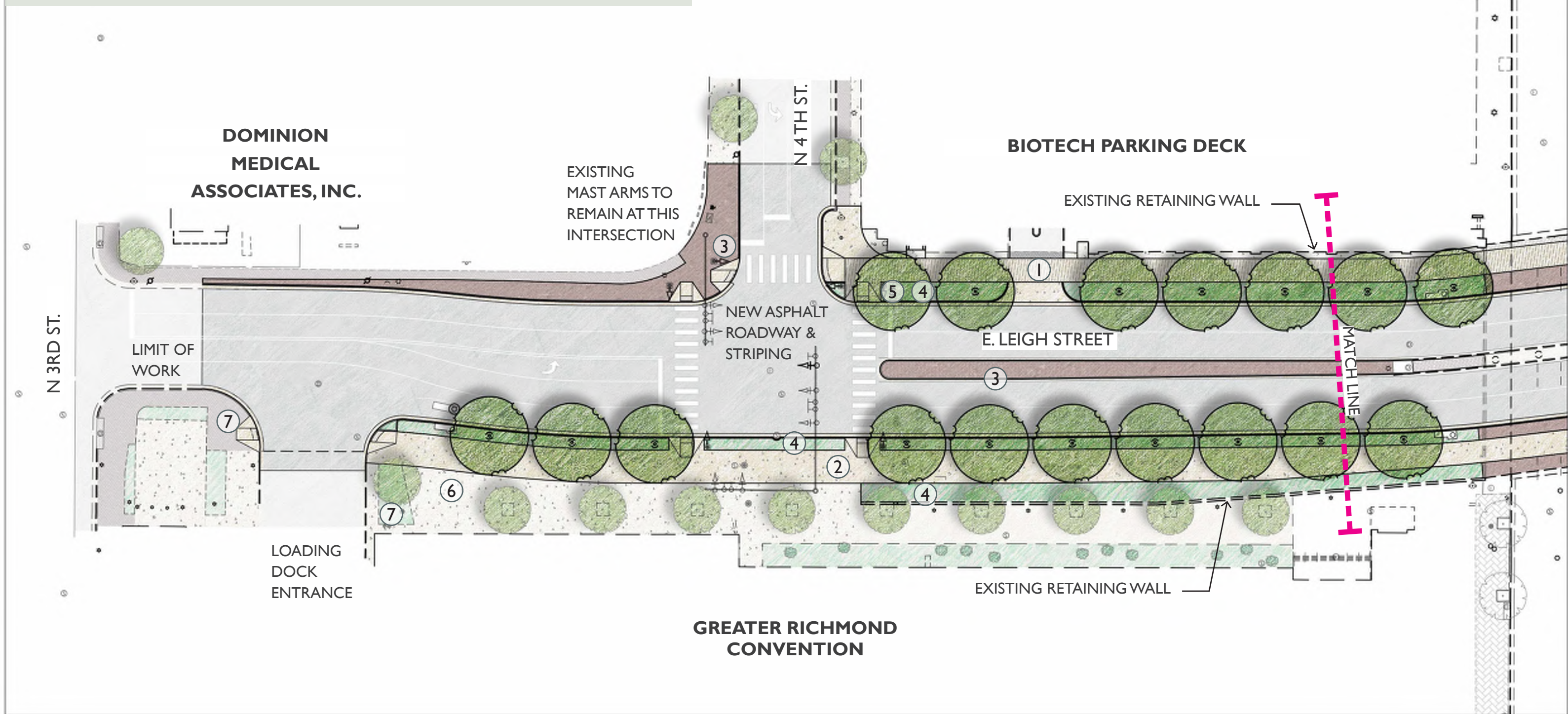
OVERALL SITE PLAN - SHEET I





LEGEND

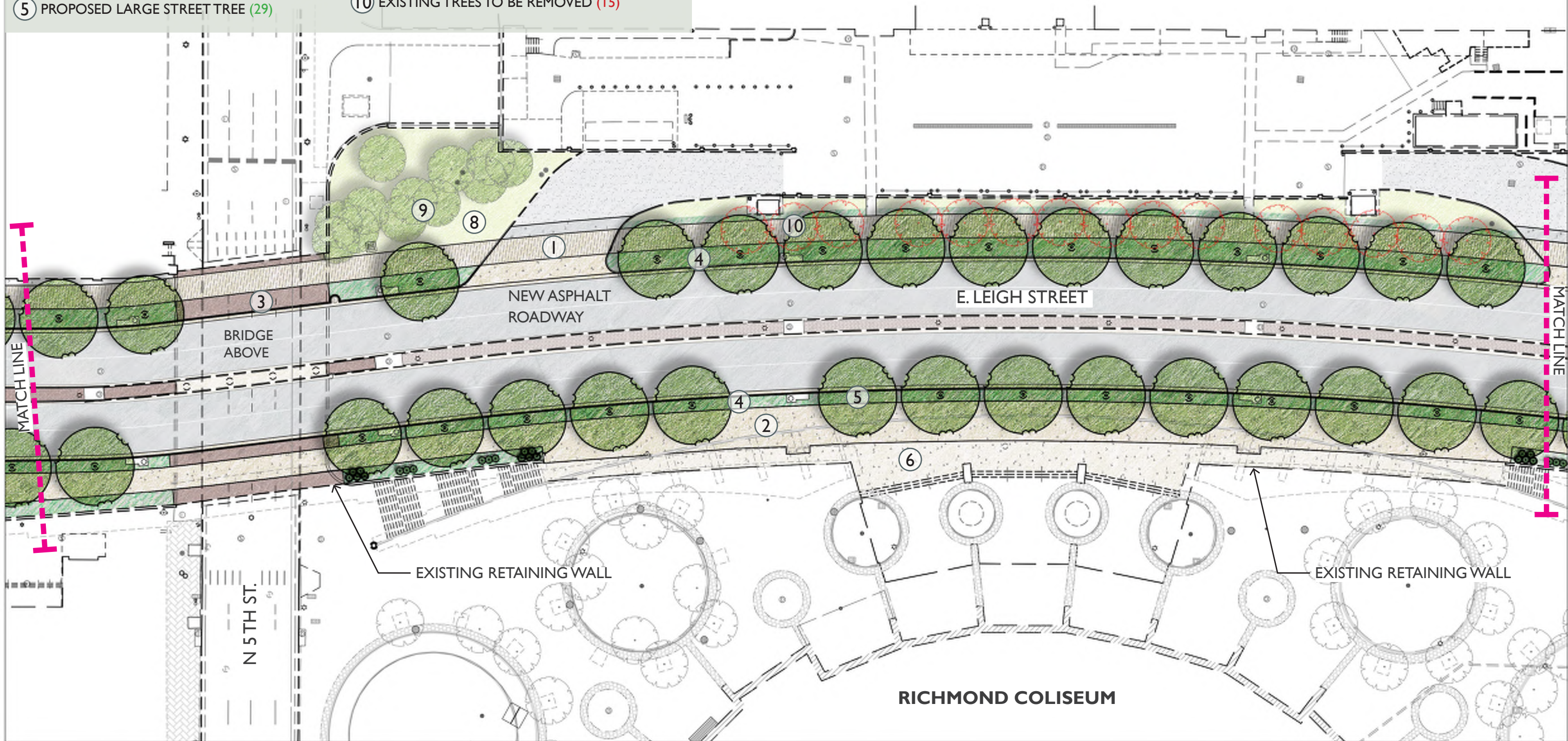
- ① PROPOSED MULTI-USE PATH (DECORATIVE CONCRETE)
- ② PROPOSED CONCRETE PAVEMENT
- ③ PROPOSED BRICK PAVEMENT
- ④ PROPOSED PLANTING BED
- ⑤ PROPOSED LARGE STREET TREE (14)
- ⑥ EXISTING CONCRETE PAVEMENT TO REMAIN
- ⑦ EXISTING BRICK PAVEMENT TO REMAIN
- ⑧ EXISTING PLANTING BED TO REMAIN
- ⑨ EXISTING TREES TO REMAIN TO REMAIN
- ⑩ EXISTING TREES TO BE REMOVED (0)



LEGEND

- ① PROPOSED MULTI-USE PATH (DECORATIVE CONCRETE)
- ② PROPOSED CONCRETE PAVEMENT
- ③ PROPOSED BRICK PAVEMENT
- ④ PROPOSED PLANTING BED
- ⑤ PROPOSED LARGE STREET TREE (29)
- ⑥ EXISTING CONCRETE PAVEMENT TO REMAIN
- ⑦ EXISTING BRICK PAVEMENT TO REMAIN
- ⑧ EXISTING PLANTING BED TO REMAIN
- ⑨ EXISTING TREES TO REMAIN TO REMAIN
- ⑩ EXISTING TREES TO BE REMOVED (15)

ALTRIA CENTER FOR RESEARCH AND TECHNOLOGY



PROPOSED SITE PLAN - SHEET 5

BIOTECH RESEARCH PARK PHASE III -
 LEIGH STREET STREETScape IMPROVEMENTS PROJECT
 UDC CONCEPTUAL REVIEW
 OCTOBER 6, 2022

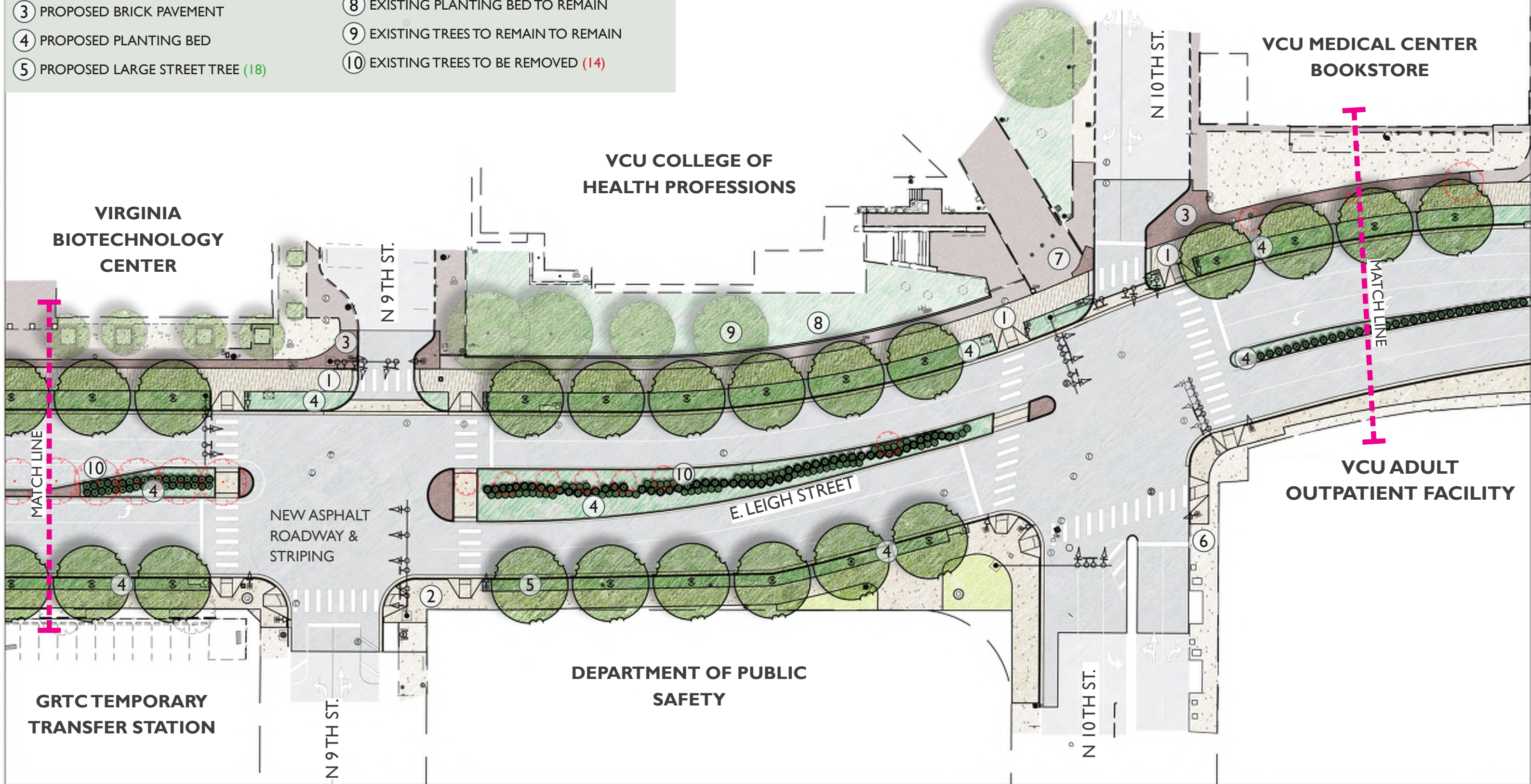
LEGEND

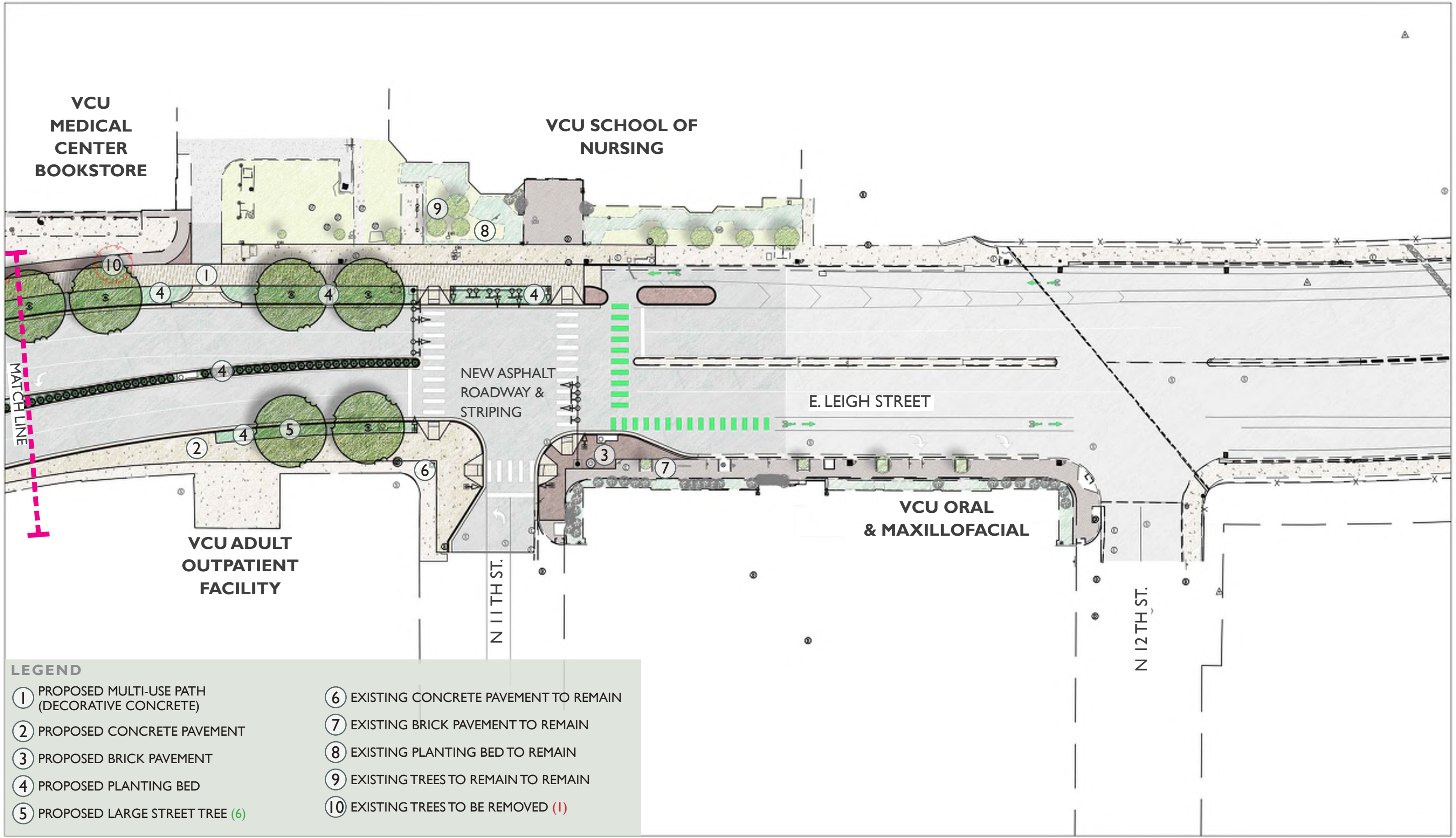
- ① PROPOSED MULTI-USE PATH (DECORATIVE CONCRETE)
- ② PROPOSED CONCRETE PAVEMENT
- ③ PROPOSED BRICK PAVEMENT
- ④ PROPOSED PLANTING BED
- ⑤ PROPOSED LARGE STREET TREE (20)
- ⑥ EXISTING CONCRETE PAVEMENT TO REMAIN
- ⑦ EXISTING BRICK PAVEMENT TO REMAIN
- ⑧ EXISTING PLANTING BED TO REMAIN
- ⑨ EXISTING TREES TO REMAIN TO REMAIN
- ⑩ EXISTING TREES TO BE REMOVED (7)



LEGEND

- ① PROPOSED MULTI-USE PATH (DECORATIVE CONCRETE)
- ② PROPOSED CONCRETE PAVEMENT
- ③ PROPOSED BRICK PAVEMENT
- ④ PROPOSED PLANTING BED
- ⑤ PROPOSED LARGE STREET TREE (18)
- ⑥ EXISTING CONCRETE PAVEMENT TO REMAIN
- ⑦ EXISTING BRICK PAVEMENT TO REMAIN
- ⑧ EXISTING PLANTING BED TO REMAIN
- ⑨ EXISTING TREES TO REMAIN TO REMAIN
- ⑩ EXISTING TREES TO BE REMOVED (14)





LEGEND

① PROPOSED MULTI-USE PATH (DECORATIVE CONCRETE)	⑥ EXISTING CONCRETE PAVEMENT TO REMAIN
② PROPOSED CONCRETE PAVEMENT	⑦ EXISTING BRICK PAVEMENT TO REMAIN
③ PROPOSED BRICK PAVEMENT	⑧ EXISTING PLANTING BED TO REMAIN
④ PROPOSED PLANTING BED	⑨ EXISTING TREES TO REMAIN TO REMAIN
⑤ PROPOSED LARGE STREET TREE (6)	⑩ EXISTING TREES TO BE REMOVED (1)

PROPOSED SITE PLAN - SHEET 8



LARGE STREET TREES (30'-50' HEIGHT)

- GLEDITSIA TRIACANTHOS VAR. INERMIS 'SHADEMASTER'
- GYMNOCLADUS DIOCIUS
- LIRIODENDRON TULIPIFERA
- NYSSA SYLVATICA
- PLATANUS ACERIFOLIA 'BLOODGOOD'
- QUERCUS PHELLOS
- QUERCUS BICOLOR
- QUERCUS COCCINEA
- TAXODIUM DISTICHUM
- TILIA CORDATA
- ULMUS AMERICANA 'PRINCETON'

ORNAMENTAL SMALL TREES (15'-25' HEIGHT)

- AESCULUS x CARNEA
- ACER BUERGERIANUM
- BETULA NIGRA 'DURA-HEAT'
- CARPINUS CAROLINIANA
- CLADRASTIS KENTUCKEA
- CRATAEGUS VIRIDIS 'WINTER KING'
- MAGNOLIA VIRGINIANA

SHRUBS

- FOTHERGILLA GARDENII
- ILEX CRENATA 'SOFT TOUCH'
- ILEX GLABRA
- ILEX VERTICILLATA
- ITEA VIRGINICA 'HENRY'S GARNET'
- RHUS AROMATICA 'GRO LOW'

GROUNDCOVERS & PERENNIALS

- ACHILLEA MILLEFOLIUM
- ASCLEPIAS TUBEROSA
- ECHINACEA PURPUREA
- HYPERICUM CALYGINUM
- MUHLENBERGIA CAPILLARIS
- NEPETA RACEMOSA
- PANICUM VIRGATUM 'SHENANDOAH'
- PENNISETUM ALOPECUROIDES 'LITTLE BUNNY'
- RUDBECKIA FULGIDA
- SCHIZACHYRIUM SCOPARIUM

