

OWNER: KLINE-WARDEN ASSOCIATES
D.B. 57 PG 1611
TAX P.C.L.: E-000-0340-121

- LEGEND**
- ⊕ POWER POLE
 - ⊗ GAS VALVE
 - ⊗ WATER VALVE
 - ⊙ GUY WIRE
 - ⊕ SIGN
 - ☆ LIGHT POLE
 - ⊙ ELECTRIC MANHOLE

TOPOGRAPHIC SURVEY ON
NO. 2418, 2420, & 2422
EAST FRANKLIN STREET
CITY OF RICHMOND, VIRGINIA
J.N. 17172

CONCEPTUAL DRAWINGS

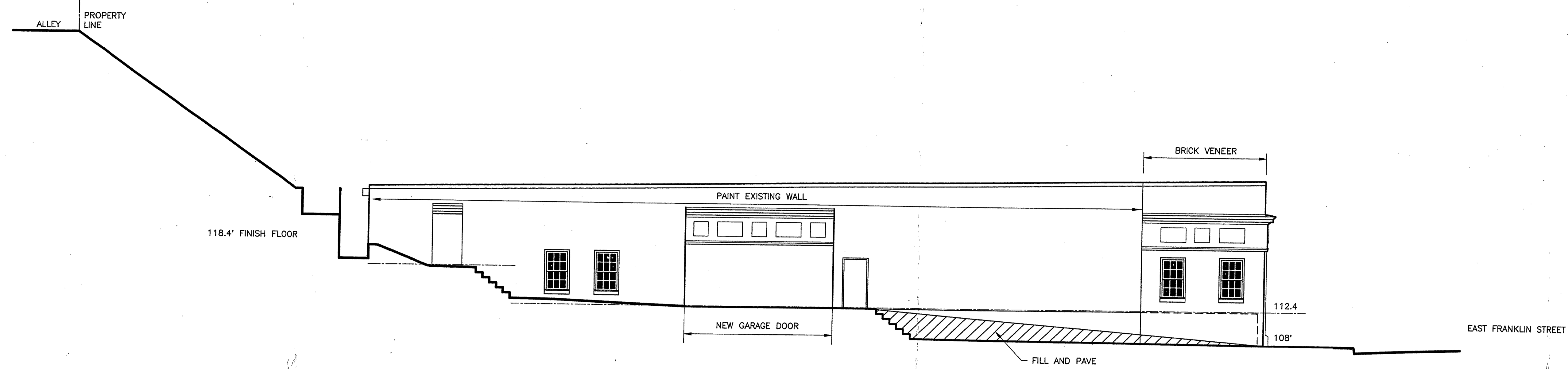
ENGINEERS SEAL ARCHITECTS SEAL

PRESENTING
CHURCH HILL GABLES
25TH & EAST FRANKLIN STREET
RICHMOND, VIRGINIA

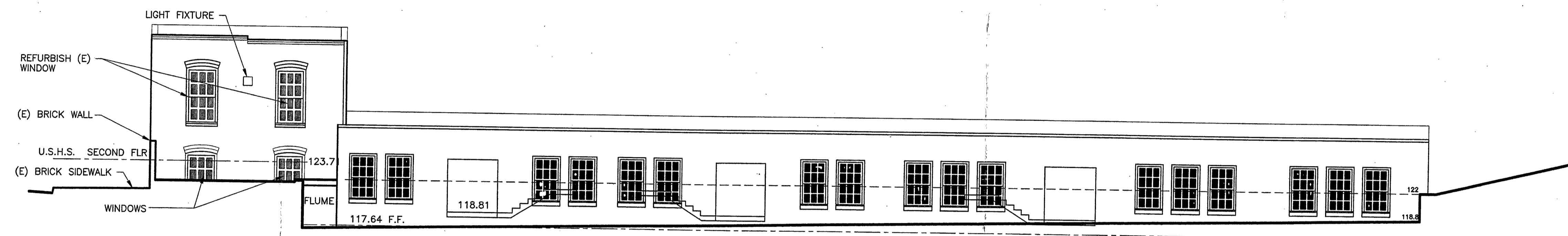
DRAWN BY: JLS	DATE: 3/26/98	REVISIONS: 5/6/98
CHECKED BY: WCN		
PROJECT NO.: 9807		
SHEET TITLE: SITE SURVEY		SHEET NO.: A1.1

NOTES

- REFURBISH EXISTING WINDOWS IN HISTORIC BUILDING. WINDOWS SHALL BE RESTORED TO WORKING ORDER. REPUTITY GLASS AND REPLACE CRACKED GLASS AND ROTTEN WOOD WHERE NECESSARY. SCRAPE, FILL, SAND, RECAULK, AND PAINT WINDOWS AND FRAMES. RETAIN AND PAINT METAL SILL COVERS.
- REFURBISH EXISTING FRONT CORNICE. SCRAPE, FILL, SAND, AND PAINT. REPAIR FLASHING AS NECESSARY.
- REPOINT BRICK JOINTS IN AREAS WHERE MORTAR IS MISSING. MATCH ORIG. MORTAR COLOR. ALLOW APPROX. 50 S.F. OF BRICK SURFACE TO BE REPOINTED.



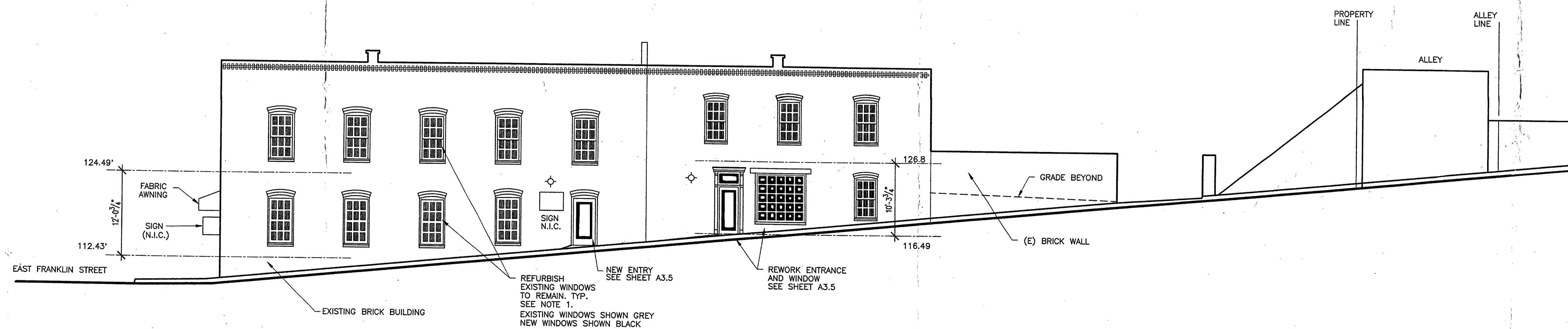
WEST ELEVATION



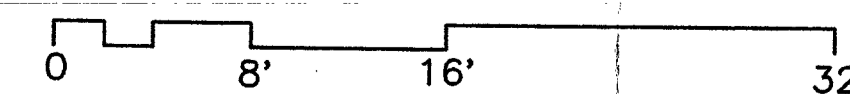
NORTH ELEVATION



SOUTH ELEVATION



EAST ELEVATION



ENGINEERS SEAL

ARCHITECTS SEAL

PRESENTING
**CHURCH HILL
GABLES**
25TH & EAST FRANKLIN STREET
RICHMOND, VIRGINIA

DRAWN BY: JLS DATE: 3/27/98 REVISIONS: 5/6/98
CHECKED BY: WCN

PROJECT NO.: 9807

SHEET TITLE: ELEVATIONS

SHEET NO.: A2.1