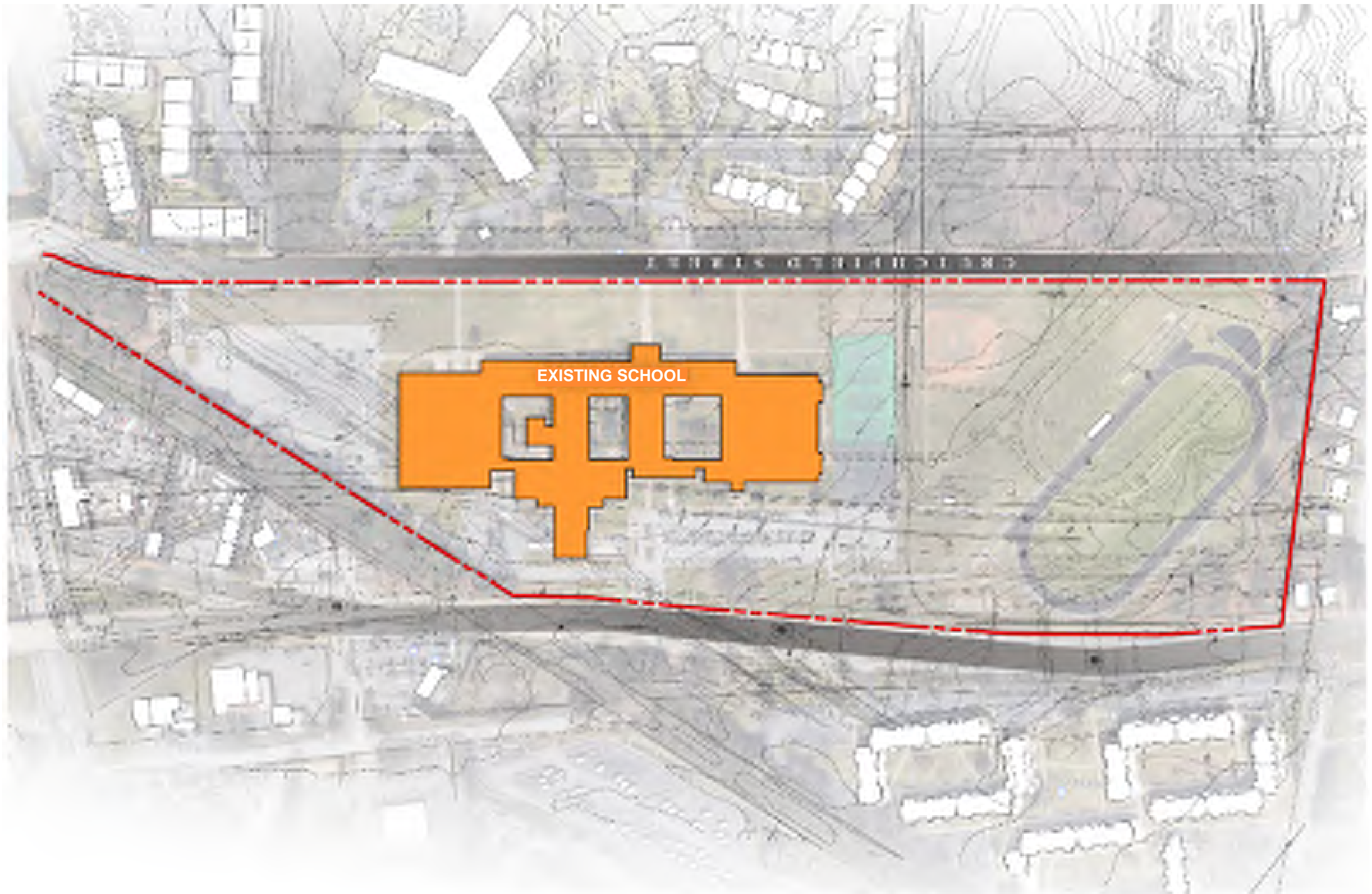


EXISTING AERIAL SITE PLAN

George Wythe High School  
Richmond Public Schools

NO SCALE

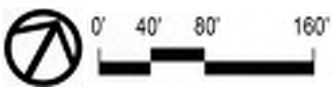




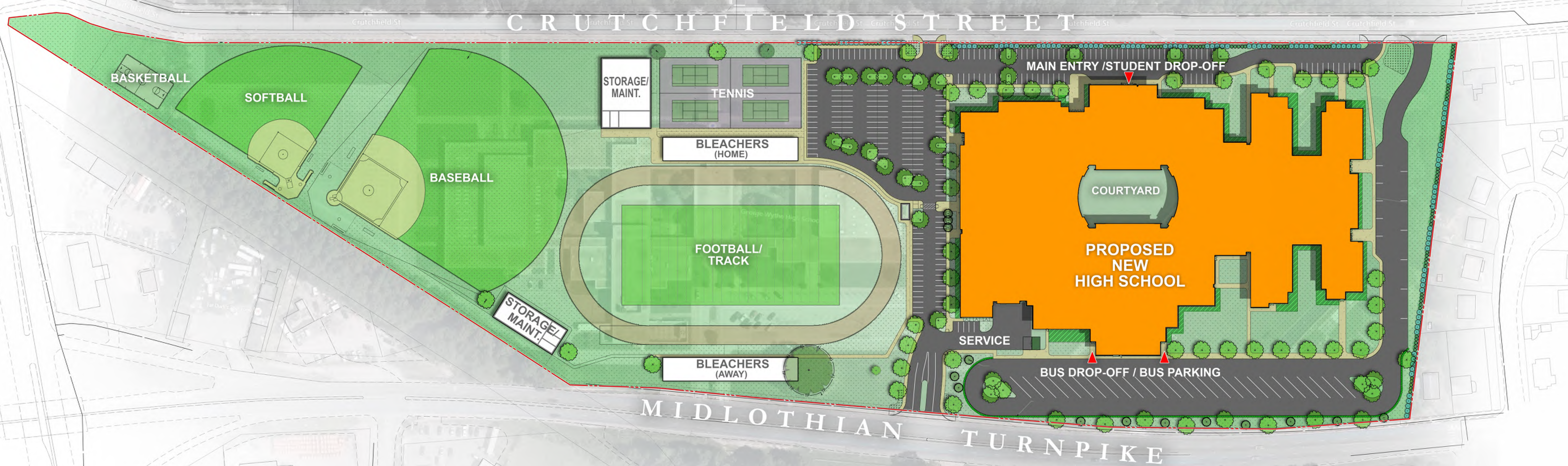
EXISTING SCHOOL

## EXISTING SITE PLAN

George Wythe High School  
Richmond Public Schools

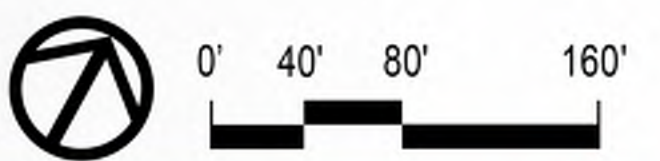


For Reference Only  
See drawn site plan for full detail



## SITE PLAN

George Wythe High School  
Richmond Public Schools

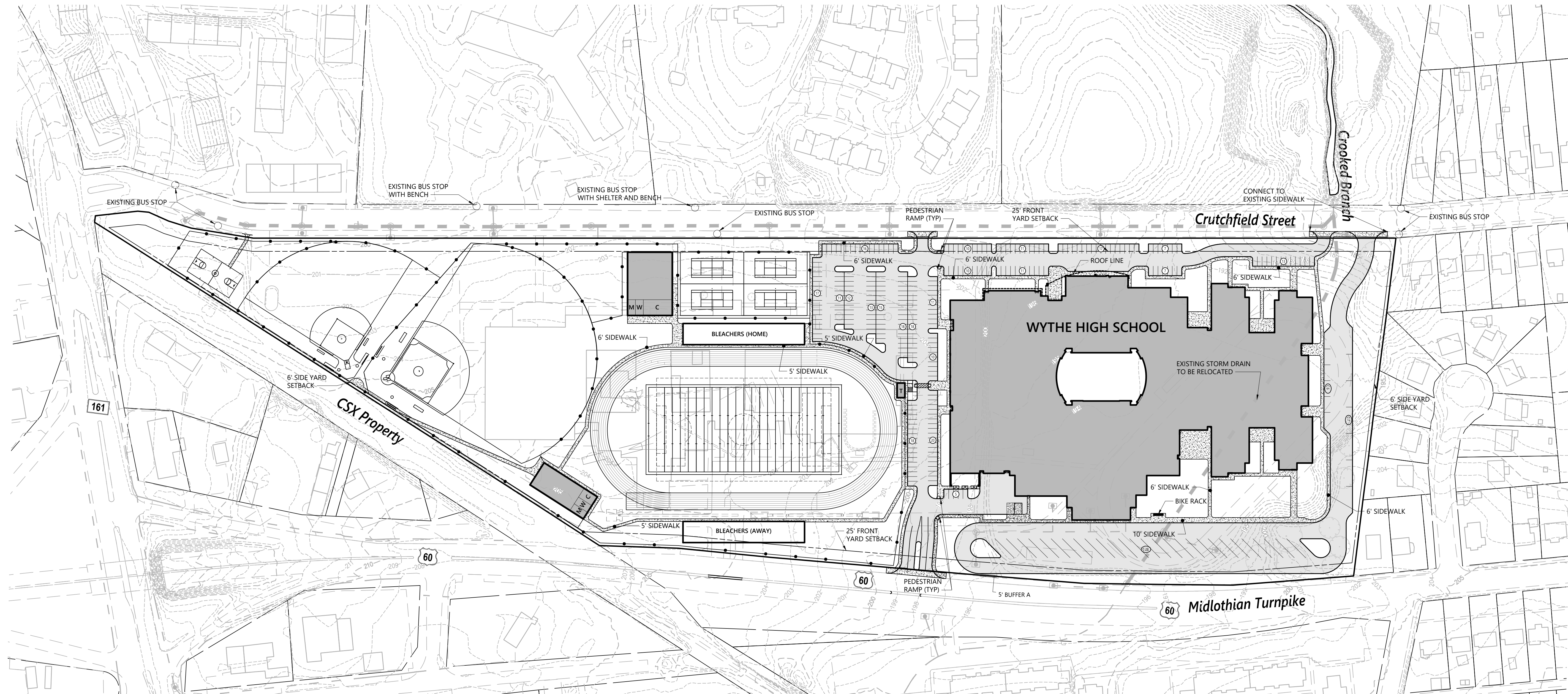


**PARKING REQUIREMENT CALCULATION METHODS (WHICHEVER IS GREATER)**

AUDITORIUM (1 PARKING SPACE PER 8 SEATS IN MAIN AUDITORIUM)  
 • 1,650 AUDITORIUM SEAS DIVIDED BY 8 SEATS EQUAL 207 PARKING SPACES

CLASSROOMS (3 PARKING SPACES PER CLASSROOM)  
 • 88 CLASSROOMS MULTIPLIED BY 3 PARKING SPACES EQUALS 264 PARKING SPACES

PARKING PROVIDED = 270 PARKING SPACES



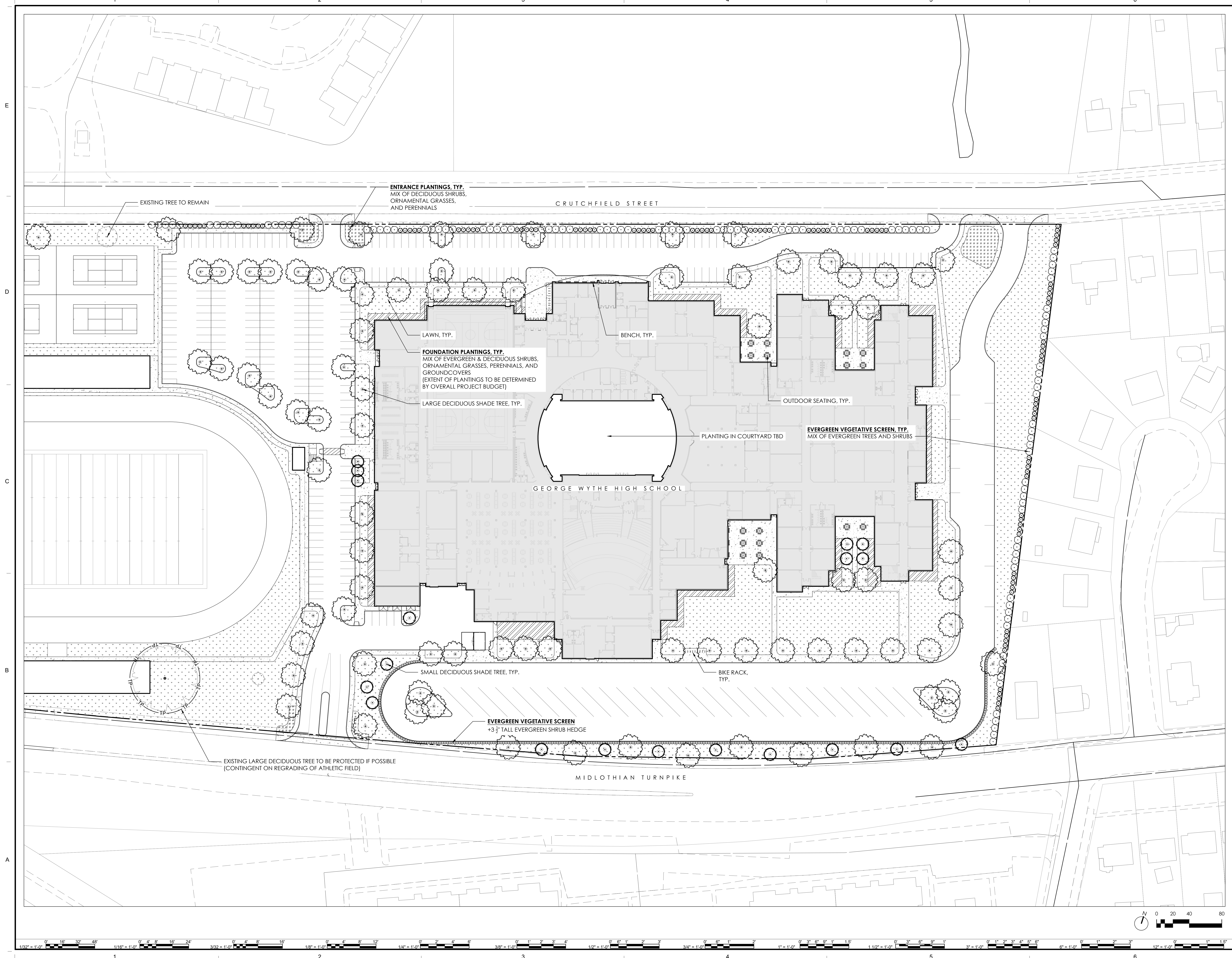
George Wythe High School  
 4314 Crutchfield Street  
 Richmond, VA

No.	Revision	Date	App'd.

Designed by: \_\_\_\_\_ Checked by: \_\_\_\_\_  
 Issued for: \_\_\_\_\_ Date: 8/24/2022

Not Approved for Construction  
**CONCEPTUAL SITE PLAN**

C-1



**ENTRANCE PLANTINGS, TYP.**  
MIX OF DECIDUOUS SHRUBS,  
ORNAMENTAL GRASSES,  
AND PERENNIALS

LAWN, TYP.

**FOUNDATION PLANTINGS, TYP.**  
MIX OF EVERGREEN & DECIDUOUS SHRUBS,  
ORNAMENTAL GRASSES, PERENNIALS, AND  
GROUNDCOVERS  
(EXTENT OF PLANTINGS TO BE DETERMINED  
BY OVERALL PROJECT BUDGET)

LARGE DECIDUOUS SHADE TREE, TYP.

BENCH, TYP.

OUTDOOR SEATING, TYP.

PLANTING IN COURTYARD TBD

**EVERGREEN VEGETATIVE SCREEN, TYP.**  
MIX OF EVERGREEN TREES AND SHRUBS

BIKE RACK,  
TYP.

SMALL DECIDUOUS SHADE TREE, TYP.

**EVERGREEN VEGETATIVE SCREEN**  
+3' TALL EVERGREEN SHRUB HEDGE

EXISTING LARGE DECIDUOUS TREE TO BE PROTECTED IF POSSIBLE  
(CONTINGENT ON REGRADING OF ATHLETIC FIELD)

EXISTING TREE TO REMAIN

GEORGE WYTHE HIGH SCHOOL

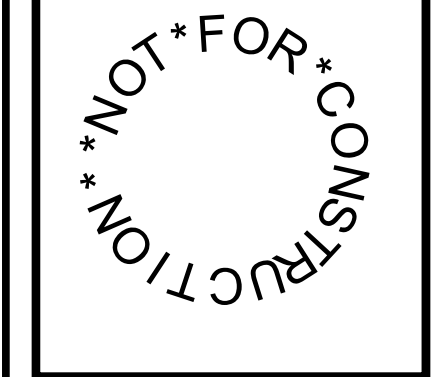
CRUTCHFIELD STREET

MIDLOTHIAN TURNPIKE

MARK	DATE	BY	DESCRIPTION

DATE	08/17/2022	DESIGNED	JR	CHECKED	KW
PROJECT	21310-00	DRAWN	JR		

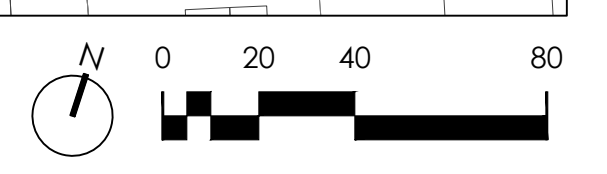
**RRMM**  
ARCHITECTS, PC  
115 South 15<sup>th</sup> Street, Suite 202  
Richmond, Virginia 23219  
(804)277-8987



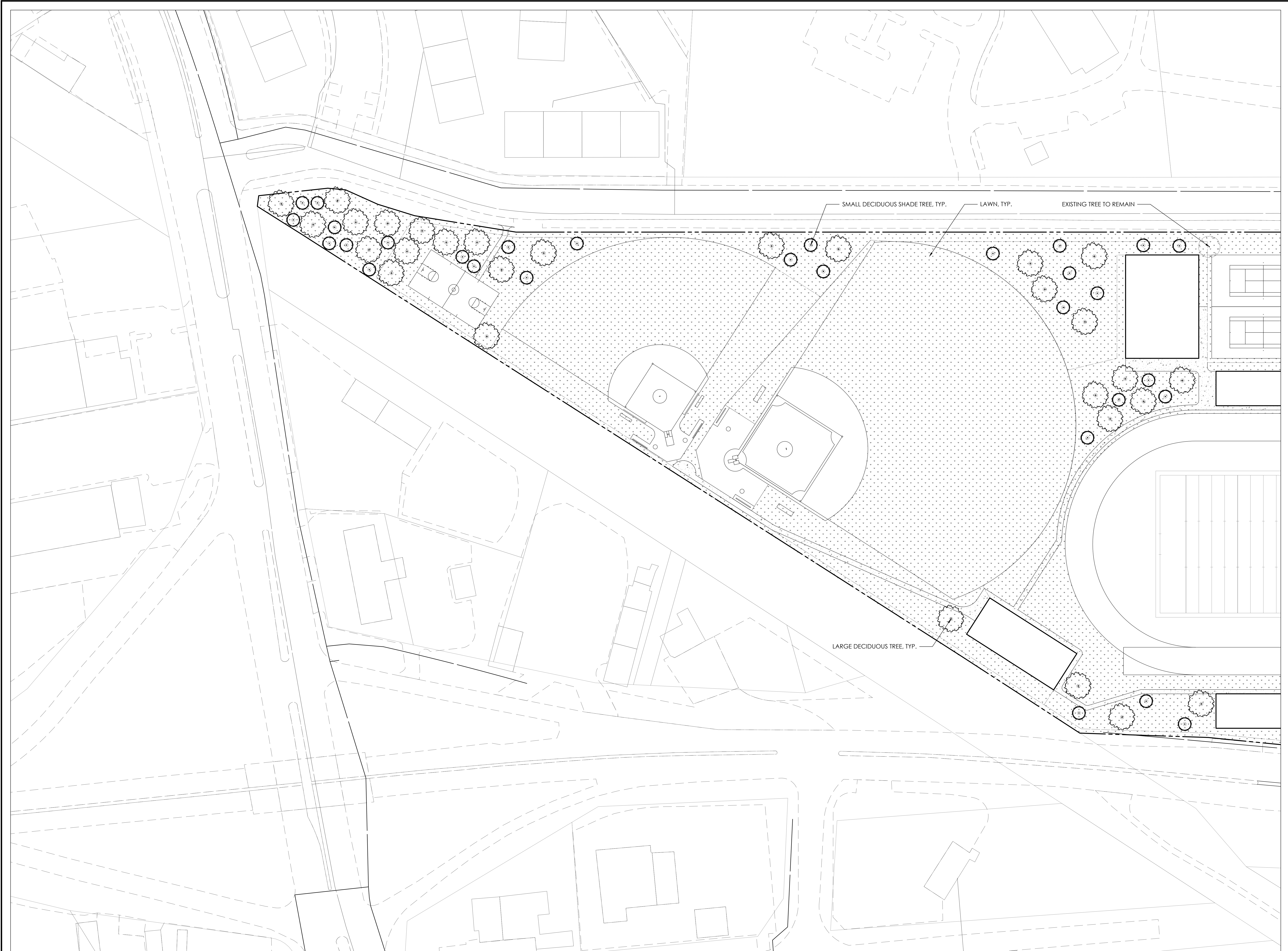
PROJECT RICHMOND PUBLIC SCHOOLS  
**GEORGE WYTHE HIGH SCHOOL**  
4314 CRUTCHFIELD STREET  
RICHMOND, VIRGINIA 23225  
DRAWING **PLANTING PLAN**

SHEET  
**L1.01**

8/10/2022 4:43:23 PM A:\data\docs\21310\00 George Wythe High School\21310-00-23 George Wythe High School - ARCH.dwg

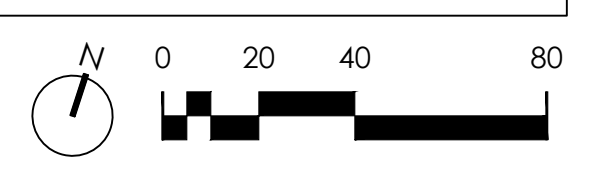


8/10/2022 4:43:23 PM A:\data\docs\21310000 George Wythe High School\213100\_023 George Wythe High School - ARCH.dwg



SMALL DECIDUOUS SHADE TREE, TYP. LAWN, TYP. EXISTING TREE TO REMAIN

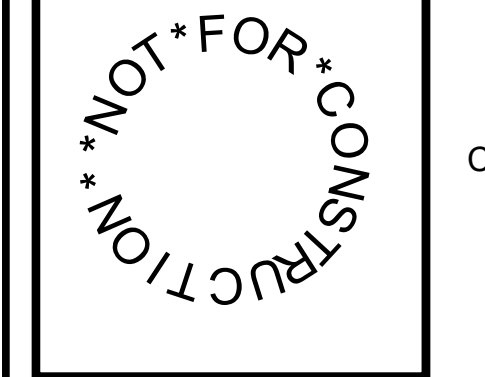
LARGE DECIDUOUS TREE, TYP.



MARK	DATE	BY	DESCRIPTION

DATE	08/17/2022	DESIGNED	JR	CHECKED	KW
PROJECT	213100-00	DRAWN	JR		

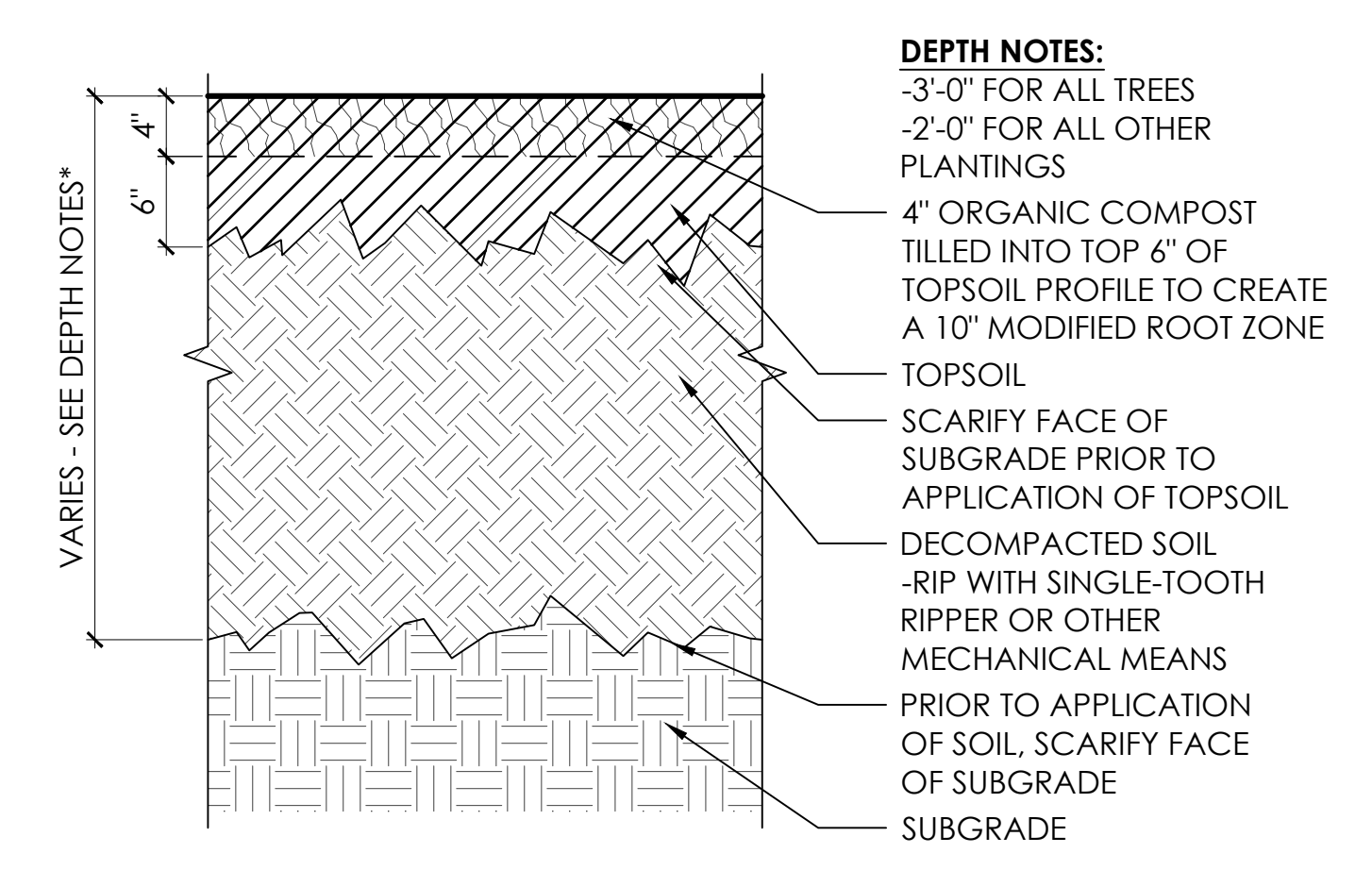
**RRMM**  
ARCHITECTS, PC  
115 South 15<sup>th</sup> Street, Suite 202  
Richmond, Virginia 23219  
(804)277-8987



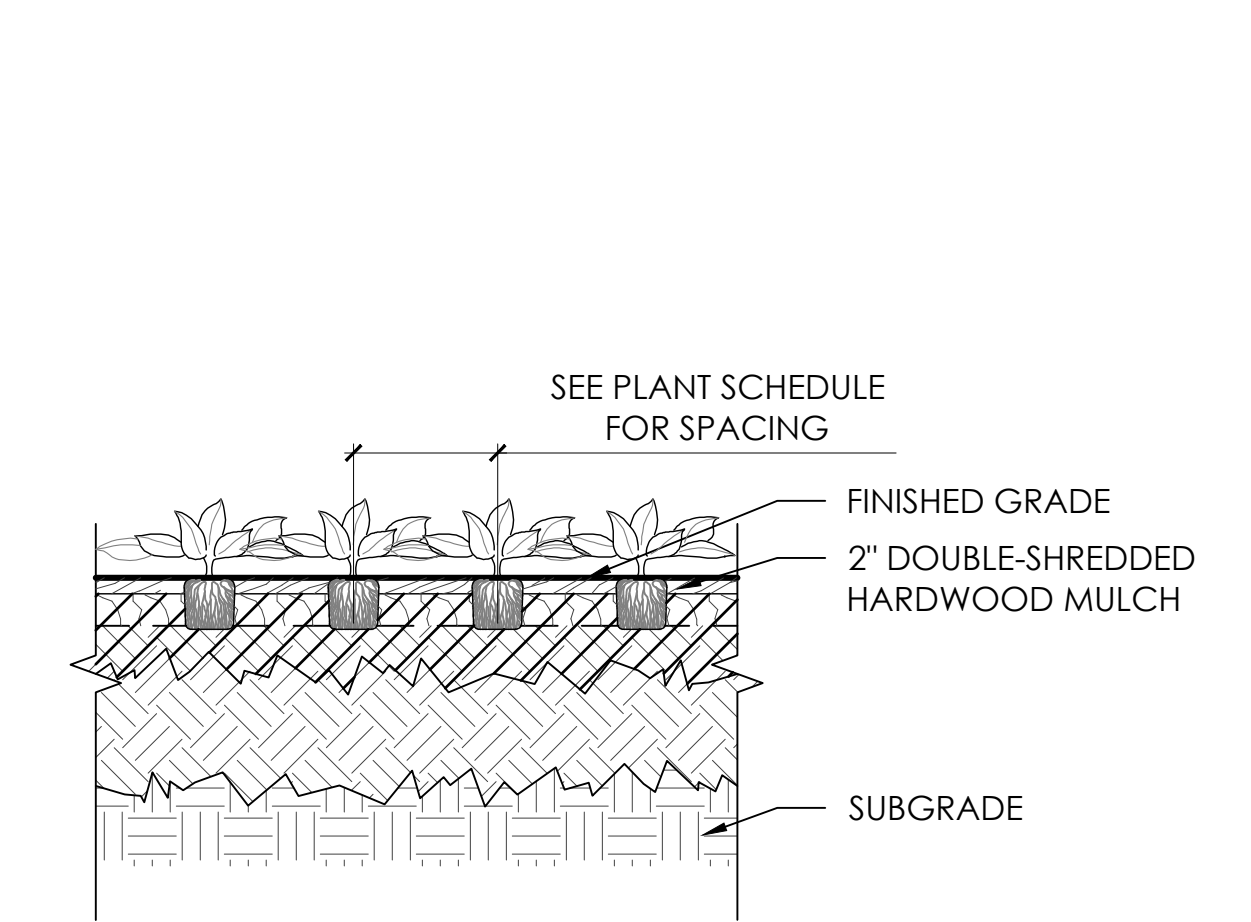
PROJECT RICHMOND PUBLIC SCHOOLS  
GEORGE WYTHE HIGH SCHOOL  
4314 CRUTCHFIELD STREET  
RICHMOND, VIRGINIA 23225

DRAWING **PLANTING PLAN**

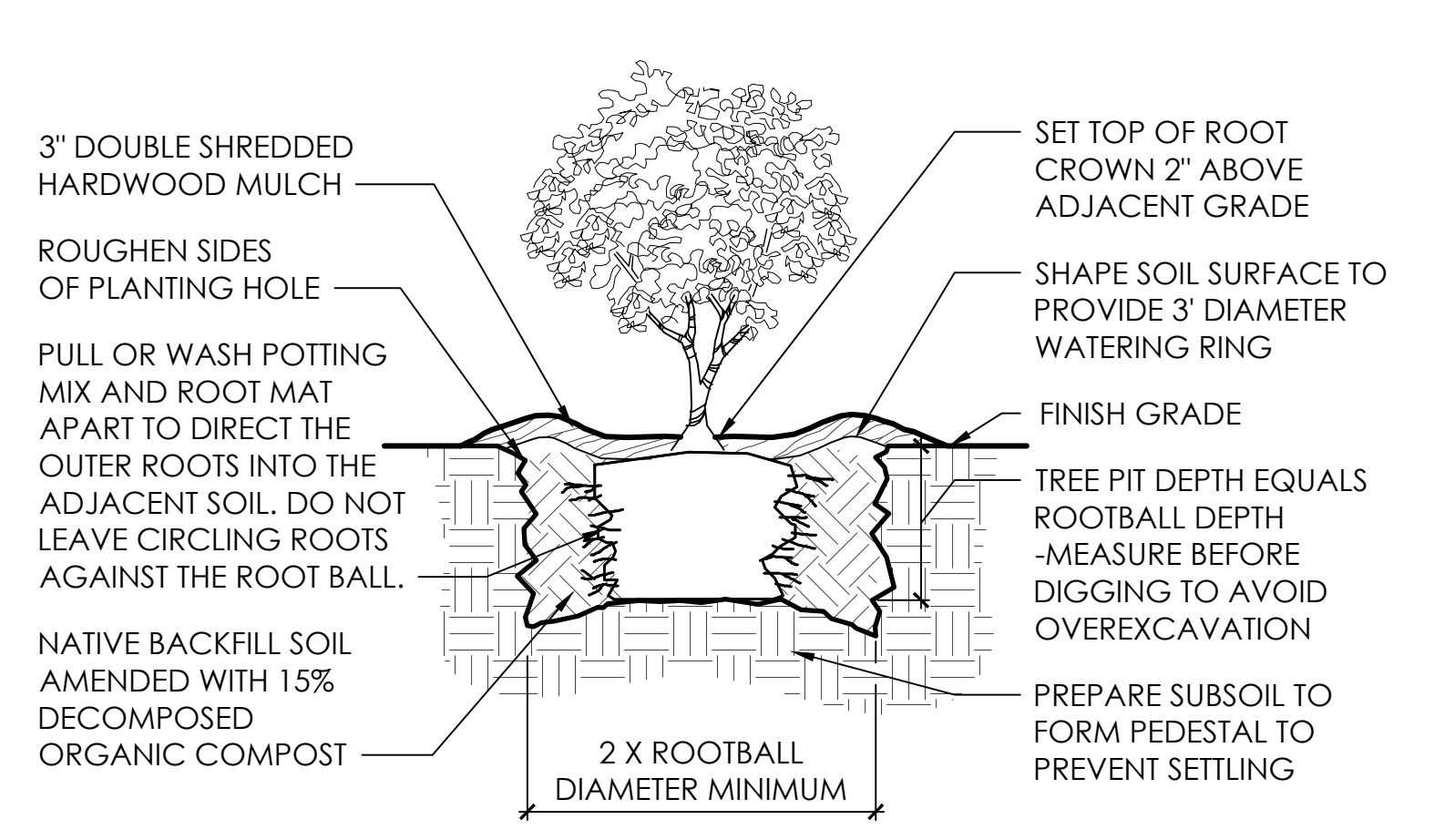
SHEET **L1.02**



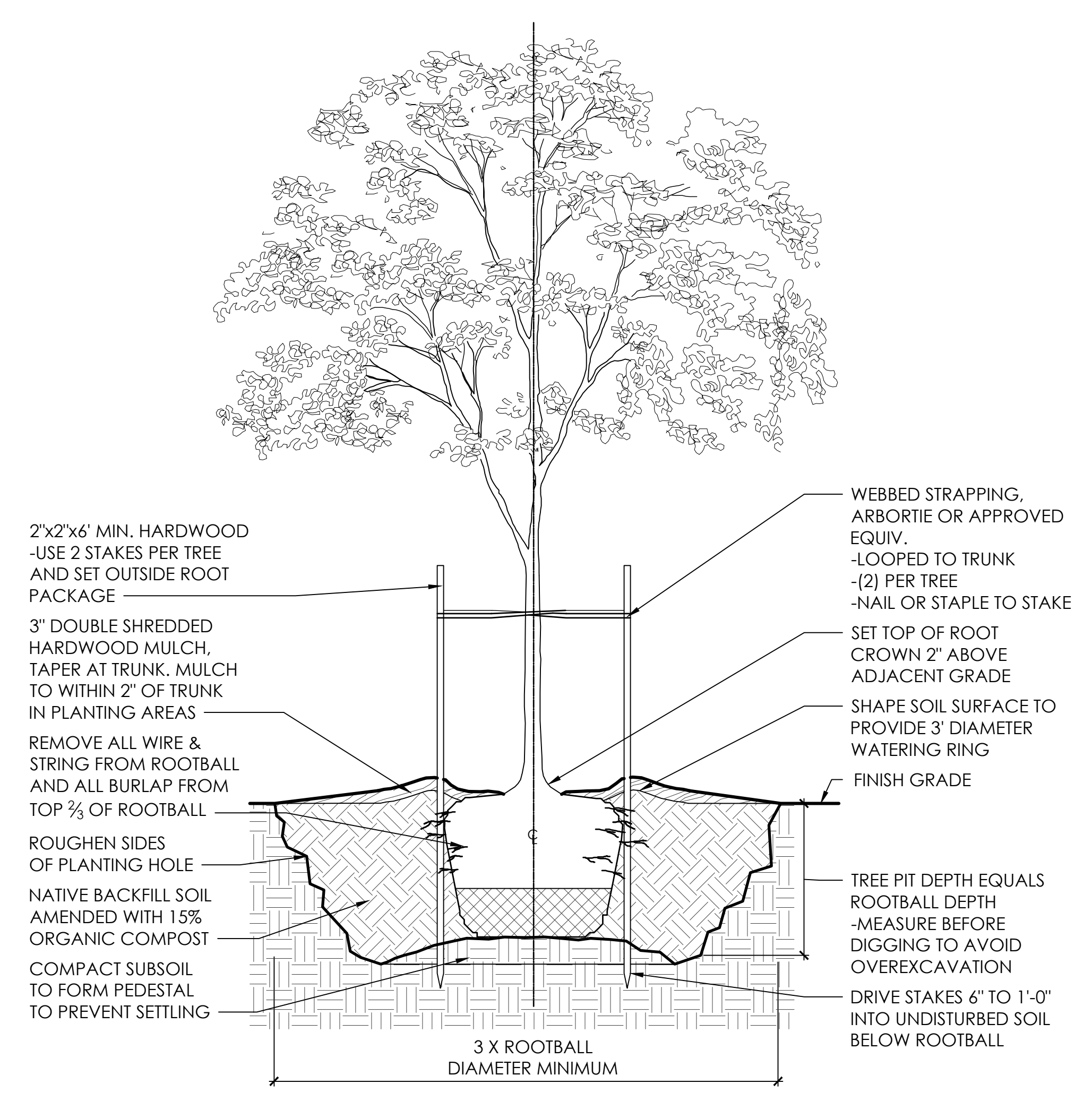
**1 SOIL PREPARATION**  
SCALE: NOT TO SCALE



**2 PERENNIAL PLANTING**  
SCALE: NOT TO SCALE



**3 SHRUB PLANTING**  
SCALE: NOT TO SCALE



**4 TREE PLANTING**  
SCALE: NOT TO SCALE

PLANT SCHEDULE							
QTY.	SYMBOL	Scientific Name	Common Name	Size	Spacing	Root	Notes
<b>TREES</b>							
116		Deciduous Tree - Large		2 1/2\" CAL.	AS SHOWN	B&B	
49		Deciduous Tree - Small		3 1/2\" CAL.	AS SHOWN	B&B	
111		Evergreen Tree - Small (Vegetative Screen)		4 1/2\" CAL.	AS SHOWN	B&B	
<b>ORNAMENTAL GRASSES &amp; SHRUBS</b>							
155		Entrance Plantings - Shrubs		24\" HT.	36\" O.C.		
223		Entrance Plantings - Grasses		18\" HT.	30\" O.C.		
417		Evergreen Shrubs - Vegetative Screen		42\" HT.	AS SHOWN		
502		Foundation Plantings - Shrubs		24\" HT.	36\" O.C.		
723		Foundation Plantings - Grasses		18\" HT.	30\" O.C.		
<b>GROUNDCOVERS &amp; PERENNIALS</b>							
621		Entrance Plantings - Perennials			18\" O.C.		
2008		Foundation Plantings - Perennials			18\" O.C.		

LANDSCAPE CALCULATIONS	
<b>TREE COVERAGE REQUIREMENTS</b>	
30-710, 15	Requirement: 30 S.F. OF 10 YEAR CANOPY PER PARKING SPACE
Parking Spaces	276
Required:	8,280 S.F.
Provided:	9,600 S.F.

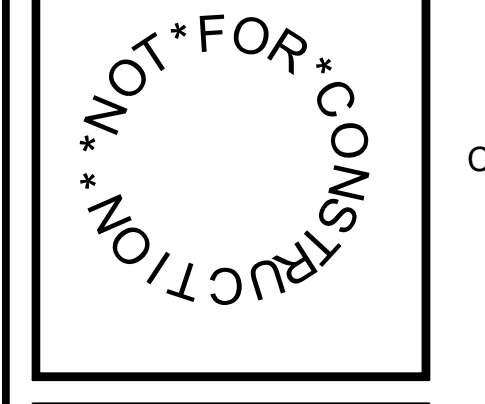
**PLANTING NOTES**

- CONTRACTOR SHALL VERIFY PLANT QUANTITIES SHOWN ON PLAN WITH TOTALS IN PLANTING SCHEDULE. NOTIFY LANDSCAPE ARCHITECT OF ANY DISCREPANCIES PRIOR TO FINAL BIDDING. UNITS PRICES BE SUBMITTED AS PART OF FINAL BID.
- ALL PLANTS SHALL BE GUARANTEED FOR ONE (1) FULL YEAR AND SHALL BE IN A HEALTHY GROWING CONDITION. PLANT MATERIALS WHICH DO NOT FULFILL THIS GUARANTY SHALL BE REPLACED AT NO COST TO THE OWNER. REPLACEMENT SHALL BE GUARANTEED THROUGHOUT THE ORIGINAL GUARANTY PERIOD. PLANTS THAT DIE SHALL BE REPLACED IMMEDIATELY.
- CONTRACTOR IS RESPONSIBLE FOR WATERING, WEEDING, PEST CONTROL, AND FERTILIZATION OF ALL PLANTS UNTIL, a.) UPON FINAL ACCEPTANCE IS ISSUED BY LANDSCAPE ARCHITECT AND/OR OWNER, AND b.) THE CONTRACTOR PROVIDES OWNER WRITTEN NOTIFICATION OF ALL MAINTENANCE NEEDS OF ALL SCOPE ASSOCIATED WITH THE PLANTING PLAN(S) CONTRACT DOCUMENTS.
- CONTRACTOR IS RESPONSIBLE FOR CONTACTING MISS UTILITY PRIOR TO THE BEGINNING OF CONSTRUCTION FOR LOCATION OF ALL UTILITY LINES. TREES SHALL BE LOCATED A MINIMUM OF FIVE (5) FEET FROM SEWER/WATER CONNECTIONS. NOTIFY LANDSCAPE ARCHITECT OF CONFLICTS.
- THE LANDSCAPE ARCHITECT IS THE OWNER'S REPRESENTATIVE AND SHALL BE THE APPROVING AUTHORITY FOR INFORMATION PROVIDED WITHIN THESE PLANS AND SPECIFICATIONS.
- ALL PLANTS, TOPSOIL, MULCH, FERTILIZERS, SOIL AMENDMENTS, PLANTING SUPPLIES, AND METHODS SHALL BE SUBJECT TO LANDSCAPE ARCHITECTS APPROVAL. REJECTED MATERIALS SHALL BE REMOVED FROM THE SITE WITHOUT DELAY AT NO EXPENSE TO THE OWNER.
- CONTRACTOR SHALL LAYOUT AND MARK LOCATION FOR ALL PLANTS, AND IMPROVEMENTS SHOWN AND SHALL REQUEST IN FIELD APPROVAL FROM LANDSCAPE ARCHITECT.
- ALL PLANTS AND PLANTING METHODS SHALL CONFORM TO AMERICAN STANDARD FOR NURSERY STOCK.
- BEDS TO CONTAIN SHRUBS, PERENNIALS, ORNAMENTAL GRASSES, OR PERENNIALS SHALL BE TILLED TO A DEPTH OF 12\" AND THE SOIL CONDITIONED BY ADDING 4\" OF A U.S. COMPOSTING COUNCIL APPROVED COMPOST.
- ALL PLANTING BED AREAS SHALL BE COVERED WITH A 3\" MINIMUM LAYER OF MEDIUM TEXTURED SHREDDED HARDWOOD MULCH UNLESS OTHERWISE NOTED.
- ALL SUBSTITUTIONS OF PLANTS SHALL BE REQUESTED IN WRITING TO THE LANDSCAPE ARCHITECT AND APPROVED IN WRITING BY THE OWNER OR THE OWNER'S REPRESENTATIVE.
- ALL PLANTING OPERATIONS SHALL BE UNDER THE SUPERVISION OF AN EXPERIENCED PLANTSMAN.
- LANDSCAPE ARCHITECT RESERVES THE RIGHT TO SELECT PLANTS IN THE NURSERY.
- FOR TREES BALLED IN WIRE BASKETS, CUT AND REMOVE TOP AND SIDES OF BASKET AFTER INSTALLATION.
- LANDSCAPE ARCHITECT RESERVES THE RIGHT TO REJECT AND PLANTS AND MATERIALS THAT ARE IN AN UNHEALTHY OR UNSIGHTLY CONDITION, AS WELL AS PLANTS AND MATERIALS THAT DO NOT CONFORM TO A.A.N. STANDARDS.
- SOIL SHALL BE FREE OR ALL WEEDS AND ROCKS GREATER THAN 1\" IN DIAMETER.
- PLANT SIZES, QUANTITIES, AND SPECIES WILL BE CHECKED BY MUNICIPALITY INSPECTION FOR COMPLIANCE WITH PLANT SCHEDULE AS APPROVED BY THE MUNICIPALITY. CONTRACTOR SHALL BE HELD RESPONSIBLE FOR DELAY IN ISSUANCE OF CERTIFICATE OF OCCUPANCY BY THE MUNICIPALITY RESULTING FROM UNAUTHORIZED SUBSTITUTIONS OR DOWNSIZING.
- UPON COMPLETION OF LANDSCAPE INSTALLATION, THE LANDSCAPE CONTRACTOR SHALL NOTIFY THE GENERAL CONTRACTOR WHO WILL VERIFY COMPLETENESS, INCLUDING THE REPLACEMENT OF ALL DEAD PLANT MATERIAL, AND SCHEDULE A FINAL INSPECTION FOR ACCEPTANCE BY OWNER.
- CONTRACTOR SHALL REMOVE TREE STAKING AT THE END OF THE ONE YEAR WARRANTEE PERIOD.
- CONTACT D.P.R. PRIOR TO PLANTING ALL TREES ON SITE TO REVIEW EXCAVATION, PLANTING MEDIA, AND INSTALLED PLANTING STOCK.
- ALL PEST CONTROL SHALL BE UNDER THE DIRECTION OF A VIRGINIA LICENSED APPLICATOR.

DATE	PROJECT	DESIGNED	DRAWN	CHECKED	BY	DESCRIPTION
08/17/2022	21310-00	JR	JR	KW		

DATE	08/17/2022
PROJECT	21310-00
DESIGNED	JR
DRAWN	JR
CHECKED	KW

**RRMM ARCHITECTS, PC**  
115 South 15<sup>th</sup> Street, Suite 202  
Richmond, Virginia 23219  
(804)277-8987



RICHMOND PUBLIC SCHOOLS  
GEORGE WYTHE HIGH SCHOOL  
4314 GRUTCHFIELD STREET  
RICHMOND, VIRGINIA 23225

DRAWING  
**PLANTING NOTES AND DETAILS**

SHEET  
**L3.01**