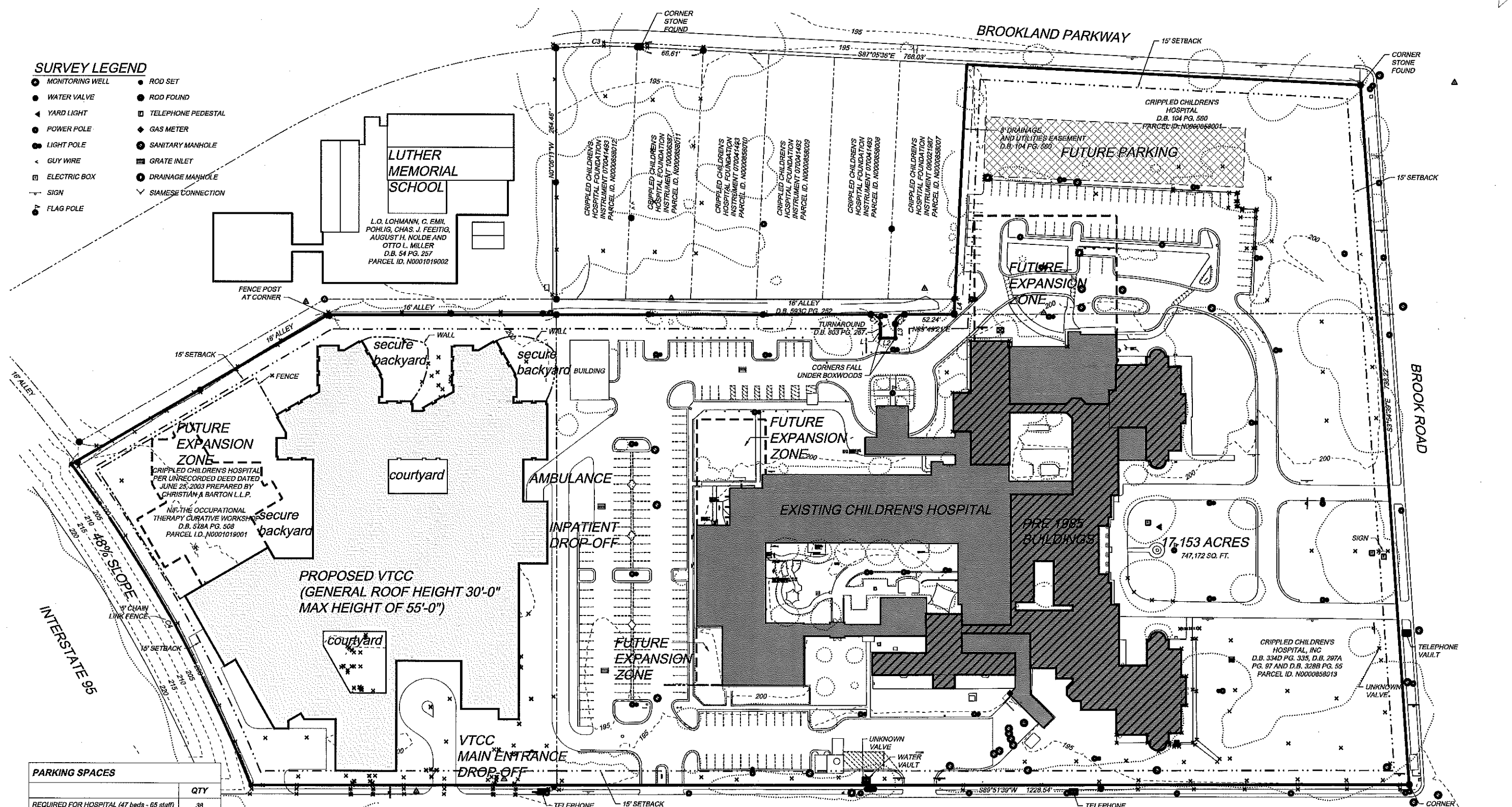


SURVEY LEGEND

- MONITORING WELL
- WATER VALVE
- ▲ YARD LIGHT
- POWER POLE
- LIGHT POLE
- ← GUY WIRE
- ELECTRIC BOX
- SIGN
- ▲ FLAG POLE
- ROD SET
- ROD FOUND
- TELEPHONE PEDESTAL
- ◆ GAS METER
- SANITARY MANHOLE
- GRATE INLET
- DRAINAGE MANHOLE
- ∨ SIAMESE CONNECTION



PARKING SPACES	
	QTY
REQUIRED FOR HOSPITAL (47 beds - 65 staff)	38
REQUIRED FOR HOSP. CLINICS (32,870 sq)	84
REQUIRED FOR V.T.C.C. (32 beds - 169 staff)	68
TOTAL PARKING REQUIRED	190
ON-SITE STANDARD PARKING PROVIDED	228
ON-SITE HANDICAP PARKING PROVIDED	7
TOTAL PARKING PROVIDED	235

DEVELOPMENT LEGEND

- PROPOSED VTCC BUILDING FOOTPRINT
- PRE 1985 BUILDING STRUCTURES
- EXISTING CHILDREN'S HOSPITAL BUILDING FOOTPRINT
- FUTURE PARKING ZONES
- ZONES FOR FUTURE BUILDING EXPANSION

BROOK ROAD CAMPUS SITE DEVELOPMENT PLAN

0 50 100ft
18 AUGUST 2014 N

CHILDREN'S HOSPITAL OF RICHMOND : BROOK ROAD CAMPUS

