

Westhampton on Grove

SUP Submission - Revised

Westhampton, LLC

Index

	Cover Sheet
C1.00	Existing Conditions Plan
C3.00	Site Plan
C3.10	Site Details
A1.00	Ground Floor Plan
A2.00	Second Floor Plan
A3.00	Third Floor Plan
A4.00	Elevations
A5.00	Elevations
A6.00	Elevations
L1.00	Landscape and Lighting Plan
L1.01	Photometric Lighting Plan
L2.00	Lighting Details



May 31, 2016

(Original SUP Submission December 22, 2015)

CONTACT: CHARLENE HARPER

Client:

WESTHAMPTON, LLC
350 PEMBROKE LAND
GOOCHLAND, VA 23238

CONTACT: STEFAN CAMETAS

Project:

WESTHAMPTON ON GROVE

Vicinity map:

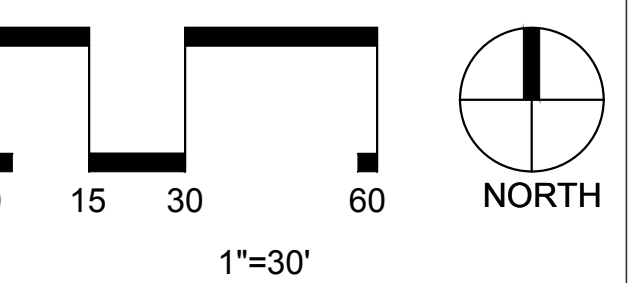
Seal:

NOT FOR CONSTRUCTION

Issued for:

SPECIAL USE PERMIT

No.	Date	Description



Title:

EXISTING CONDITIONS PLAN

Project number: M15038 Sheet:

Date: 05.31.2016

Drawn by: ABS

Approved by: CAH

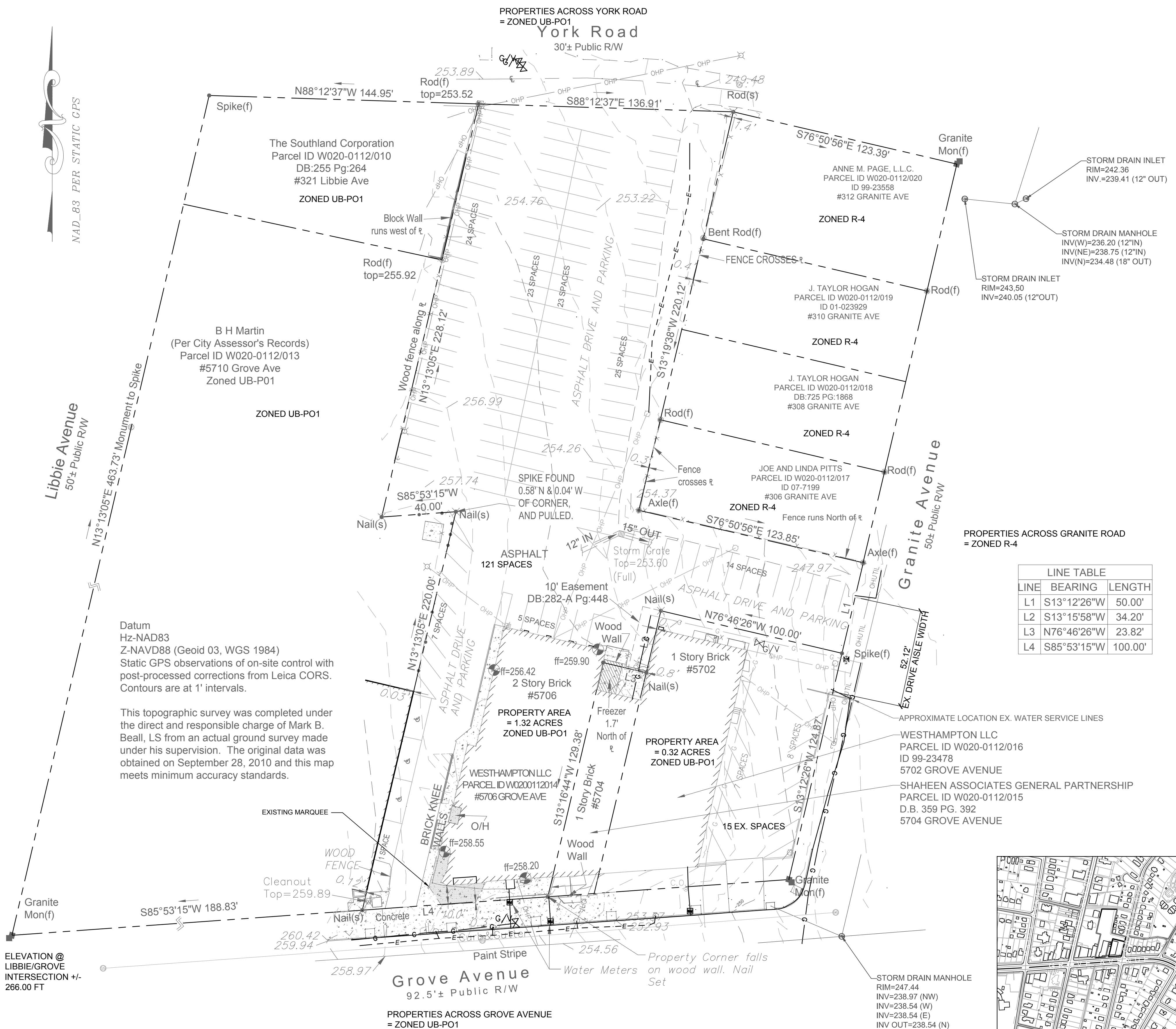
C1.00

SURVEY NOTES:

- THIS SURVEY MAP IS INTENDED TO REPRESENT THE EXISTING CONDITIONS/TOPOGRAPHY ON A PORTION OF THE PROPERTY AND ALL ENCUMBRANCES UPON THE PROPERTY MAY NOT BE SHOWN.
- HORIZONTAL DATUM IS NAD 83-2011 AND VERTICAL DATUM IS NAVD88.
- THIS DRAWING IS NOT FOR RECORDATION.
- UTILITIES SHOWN HEREON ARE BASED SOLELY ON ABOVE-GROUND VISIBLE EVIDENCE. NO UTILITY DESIGNATION/MARKING SERVICES WERE PERFORMED AS A PART OF THIS SURVEY. CONTRACTOR SHALL FIELD VERIFY THE LOCATION OF ALL UTILITIES BEFORE COMMENCING CONSTRUCTION.
- SURVEY INFORMATION BASED ON FIELD SURVEY OF LOT #5702 BY BDR SURVEY COMPLETED ON 10.15.2015 AND REMAINING SURVEY BY BALZER AND ASSOCIATES COMPLETED ON 09.10.2010.
- THE SUBJECT PROPERTY LIES IN ZONES X (AREA DETERMINED TO BE OUTSIDE THE 0.2% ANNUAL CHANCE AND FUTURE CONDITIONS 1% ANNUAL CHANCE FLOODPLAIN) BASED ON THE FLOOD INSURANCE RATE MAP COMMUNITY MAP NUMBER NUMBERS101290009D, EFFECTIVE 04/02/2009
- NO WETLANDS HAVE BEEN IDENTIFIED WITHIN THE PROJECT OR PARCEL SHOWN.
- THERE ARE NO CHESAPEAKE BAY PRESERVATION AREAS ON PROPERTY.

EXISTING CONDITIONS LEGEND

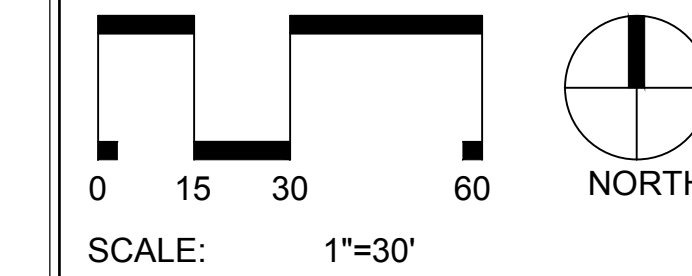
- EXISTING LIGHT POLES
- EXISTING OVERHEAD POWER
- EXISTING WATER METER
- EXISTING ADA ACCESSIBLE PARKING SPACE
- EXISTING OVERHEAD COMMUNICATIONS
- EXISTING FENCE
- EXISTING OVERHEAD UTILITY



WESTHAMPTON ON GROVE

SPECIAL USE PERMIT

No.	Date	Description



SITE PLAN

- ### SITE LEGEND
- PROPOSED BUILDING
 - PROPOSED CONCRETE SIDEWALK
 - PROPOSED FULL DEPTH ASPHALT
 - PROPOSED CURB & GUTTER
 - PROPOSED SIGN
 - PROPOSED ADA PARKING SPACE
 - PROPOSED WHEEL STOP
 - PROPOSED FENCE
 - PROPOSED VEHICLE GATE (X' WIDE)
 - PROPOSED LIGHT
 - PROPOSED BIKE RACK

TOTAL SITE AREA: **1.65 AC:**

BLDG 1: 0.25 AC
BLDG 2: 0.29 AC
SIDEWALKS: 0.23 AC
VEHICULAR PAVEMENT: 0.71 AC
OPEN SPACE: 0.17 AC (10.3%)

REQUIRED PARKING: **111 SPACES:**

1 SPACE PER 330 SQ. FT. BUSINESS
1 SPACE PER 4 RESIDENTIAL UNITS
BASED ON SHOPPING CENTER DESIGNATION

PROVIDED PARKING: **111 SPACES:**

22 COMPACT (20% OF TOTAL)
5 H.C. ACCESSIBLE

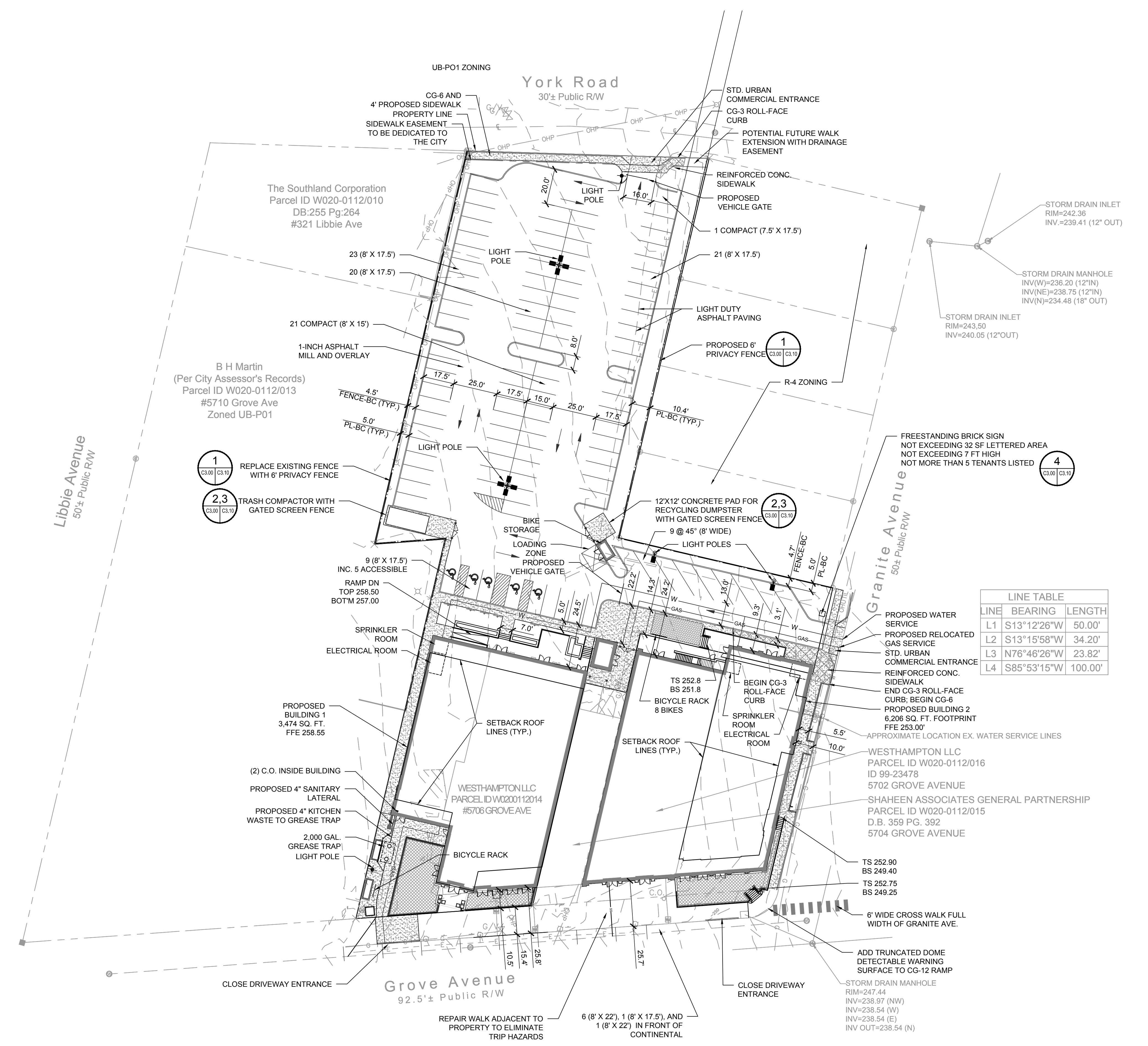
EXISTING IMPERVIOUS AREA: 92.4%
PROPOSED IMPERVIOUS AREA: 89.7%

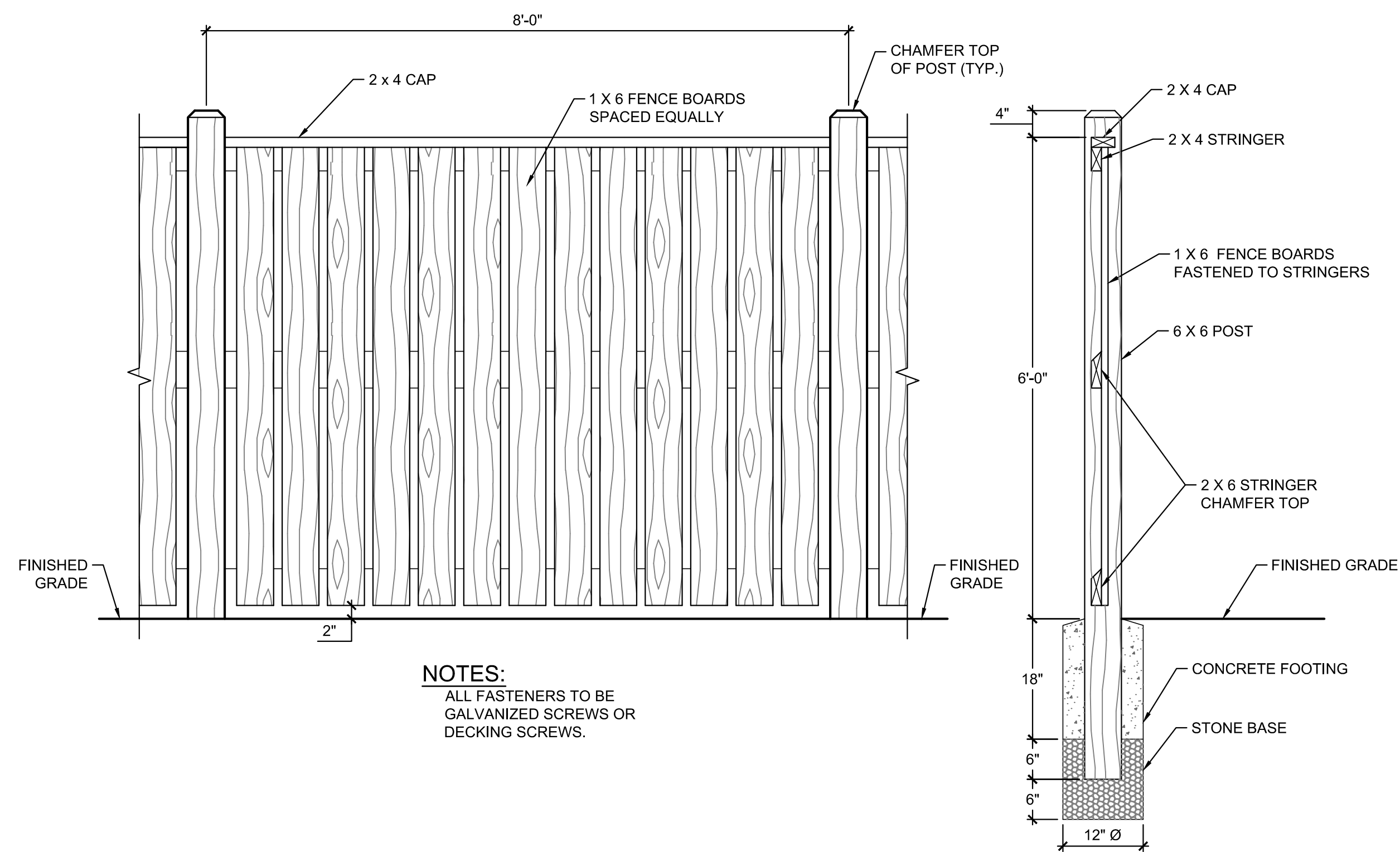
WATER QUALITY REQUIREMENTS: ACCOMPLISHED VIA A COMBINATION OF NUTRIENT CREDIT PURCHASE, REDUCED PERCENT IMPERVIOUS AREA, AND COMPOST-AMENDED GREEN SPACES

WATER QUANTITY REQUIREMENTS: POST-DEVELOPED 10-YEAR POST-DEVELOPED PEAK FLOWS AT OUTFALL POINTS.

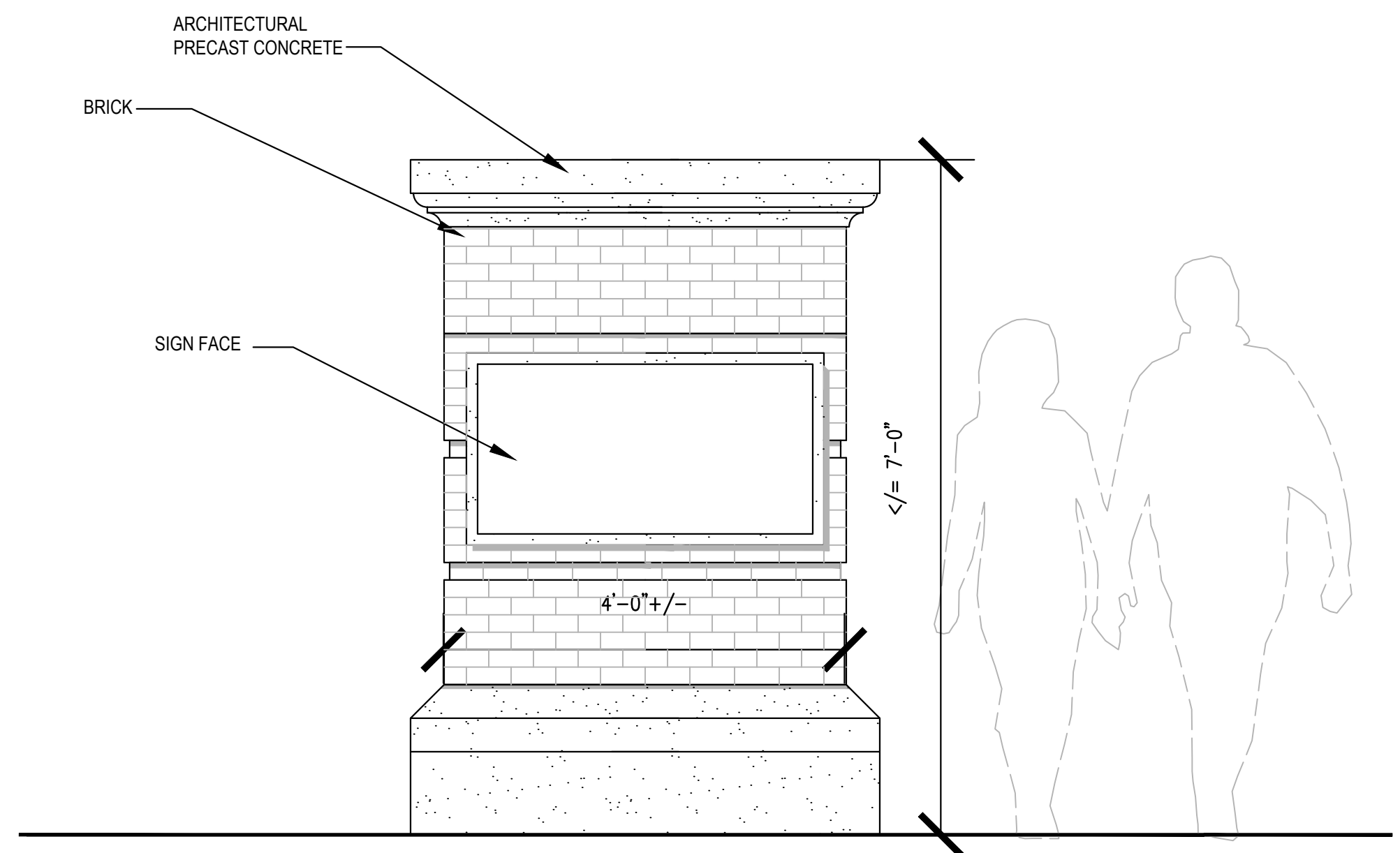
LINE TABLE

LINE	BEARING	LENGTH
L1	S13°12'26"W	50.00'
L2	S13°15'58"W	34.20'
L3	N76°46'26"W	23.82'
L4	S85°53'15"W	100.00'

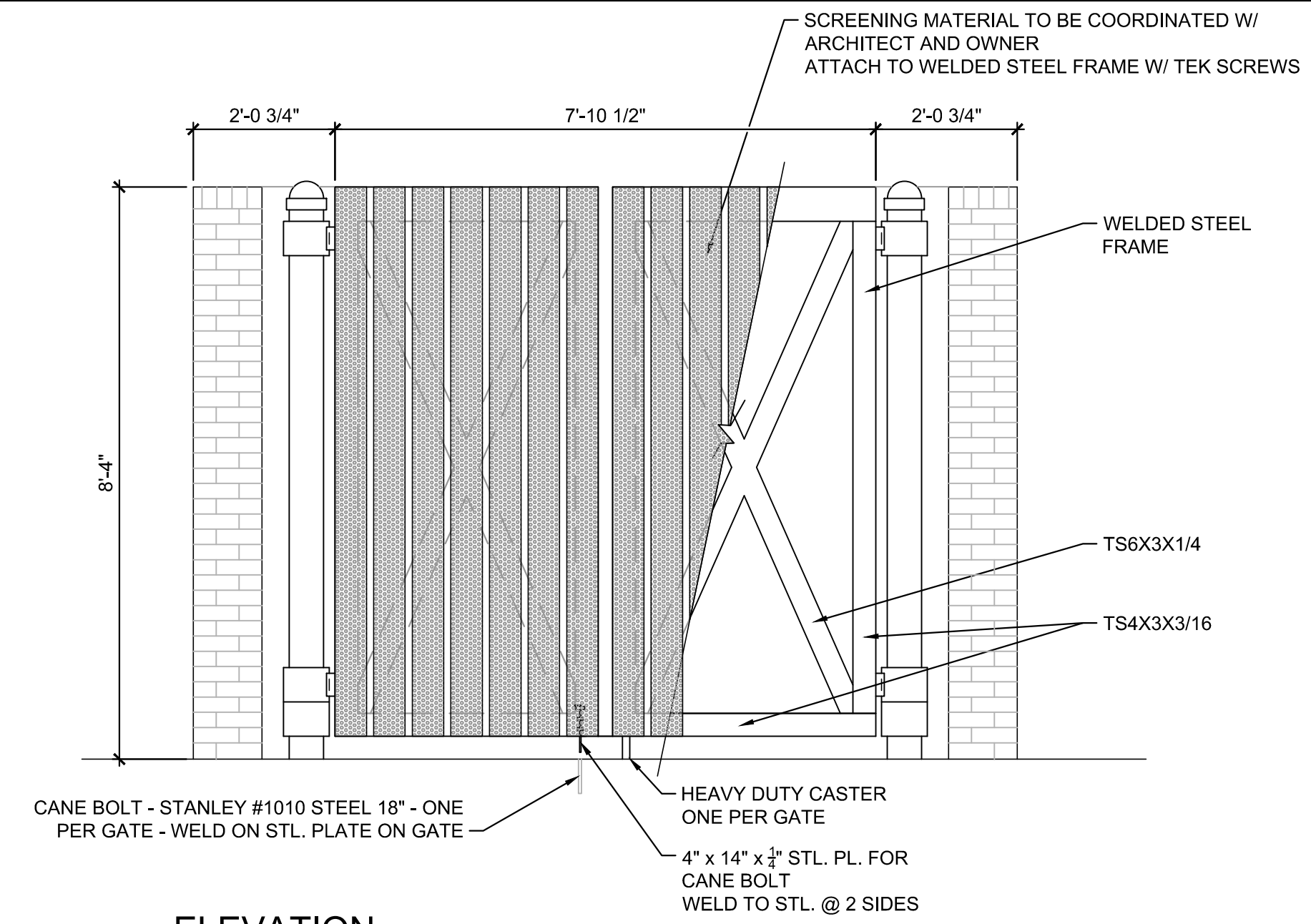




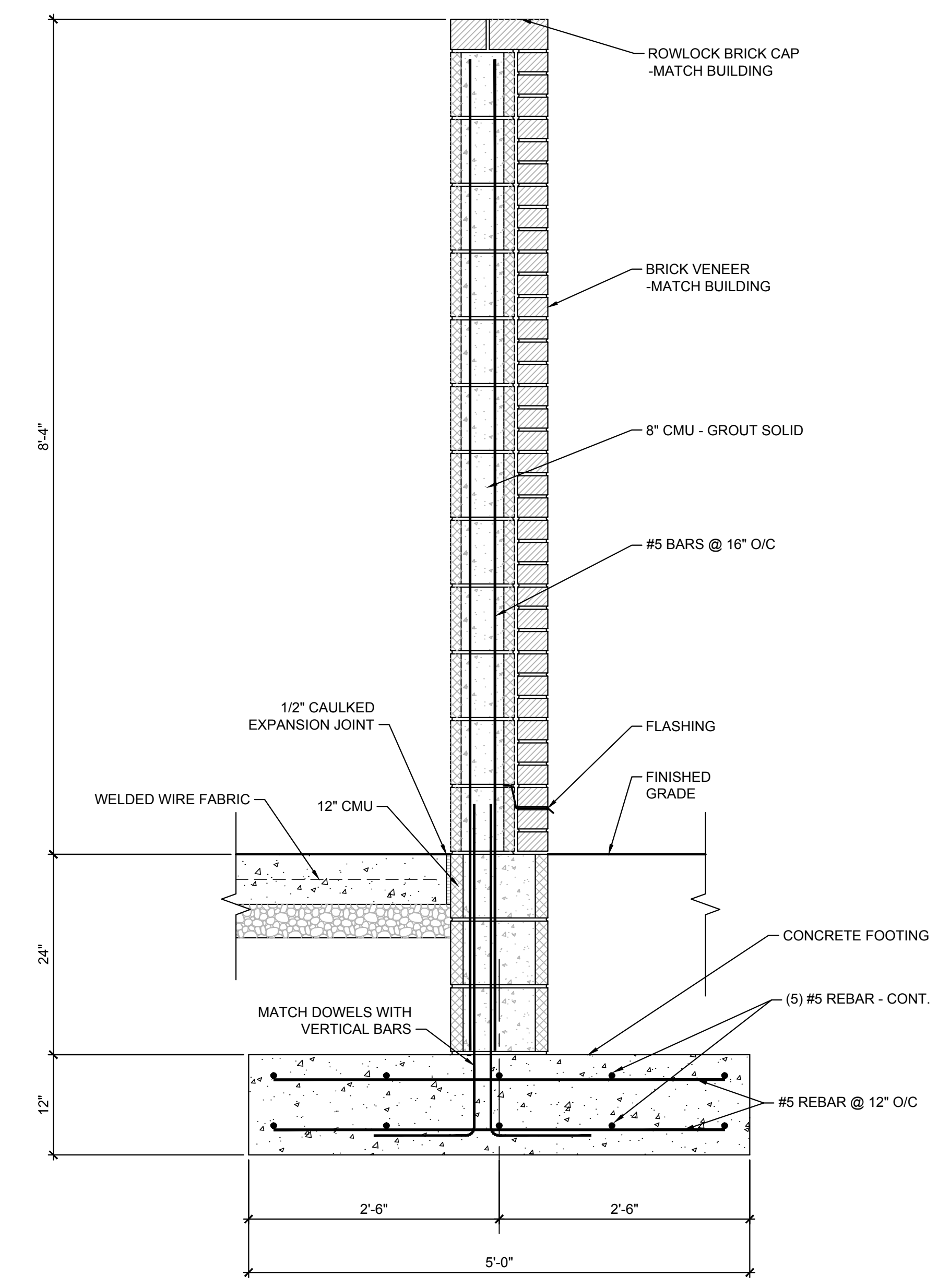
1 ELEVATION
PRIVACY FENCE
SCALE: 3/4" = 1'-0"



4 ELEVATION
PROJECT MONUMENT COLUMN
SCALE: NTS



2 ELEVATION
DUMPSTER AND COMPACTOR ENCLOSURE
SCALE: 1/2" = 1'-0"



3 SECTION
DUMPSTER AND COMPACTOR ENCLOSURE
SCALE: 1" = 1'-0"

CONTACT: CHARLENE HARPER
Client:
WESTHAMPTON, LLC
350 PEMBROKE LAND
GOOCHLAND, VA 23238
CONTACT: STEFAN CAMELAS

Project:
**WESTHAMPTON
ON GROVE**

Vicinity map:

Seal:

NOT FOR CONSTRUCTION

Issued for:

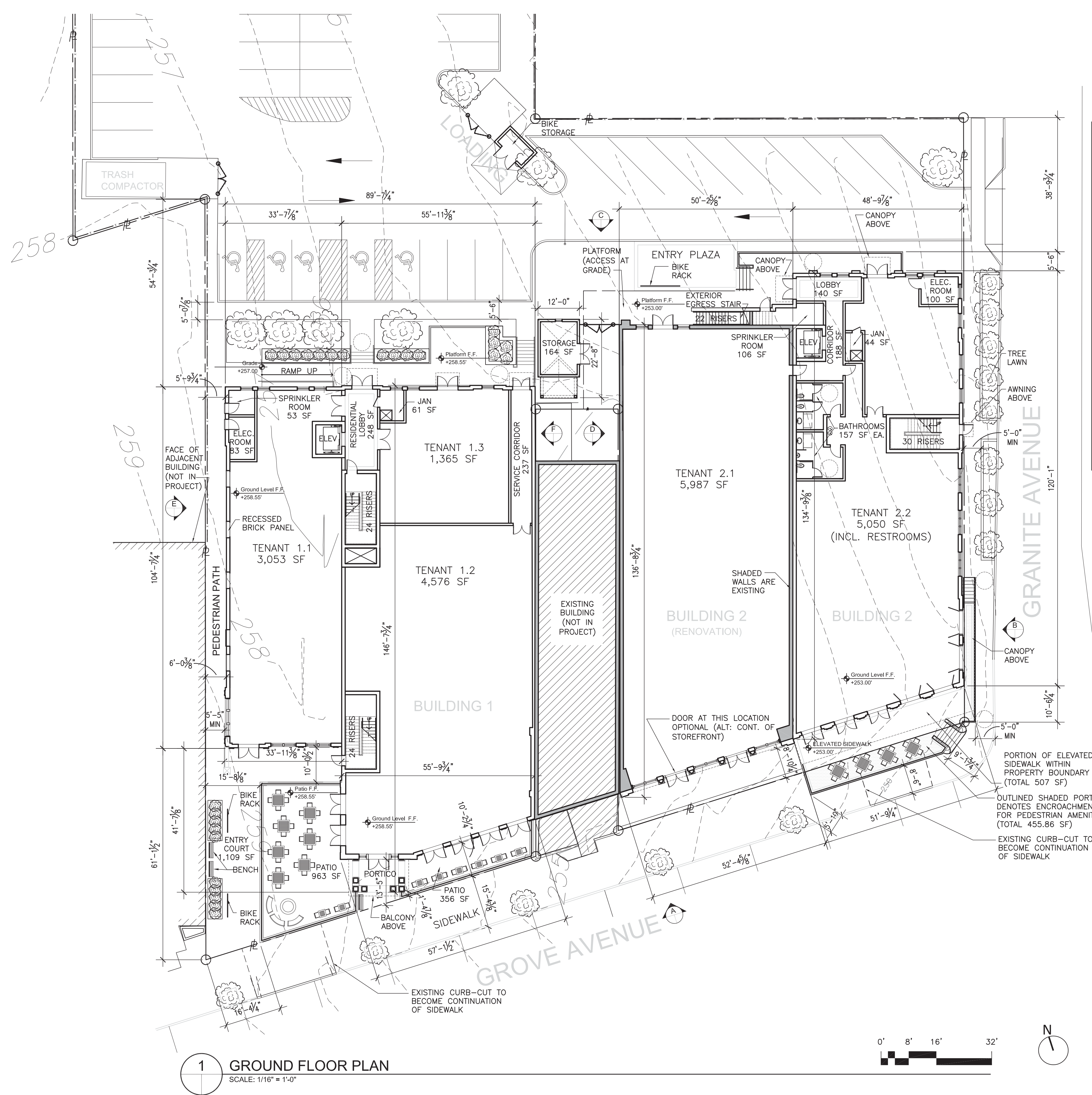
SPECIAL USE PERMIT

No.	Date	Description

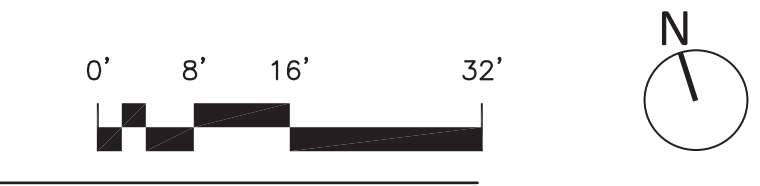
SCALE: AS NOTED

Title:

SITE DETAILS

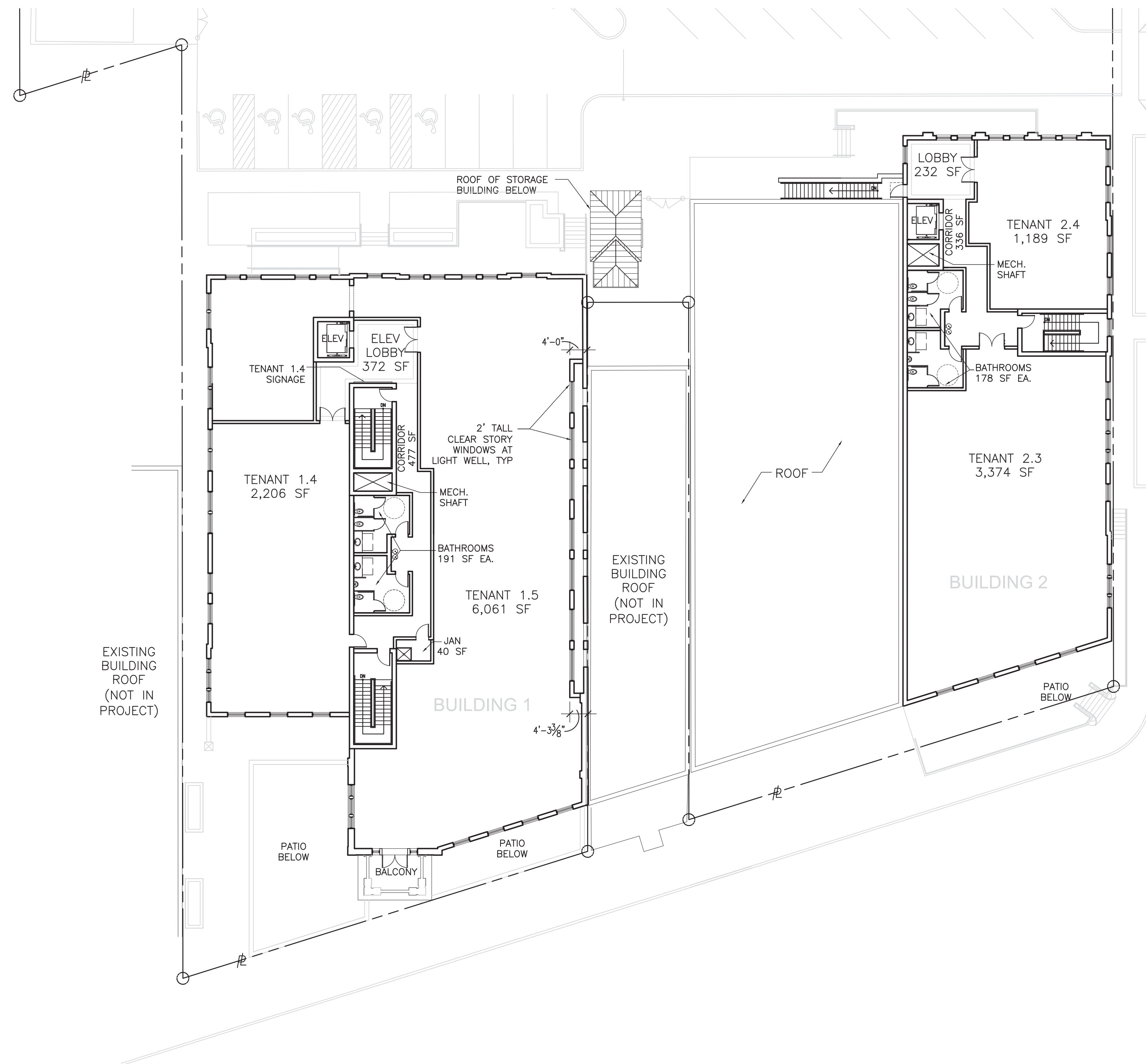


1 GROUND FLOOR PLAN
SCALE: 1/16" = 1'-0"

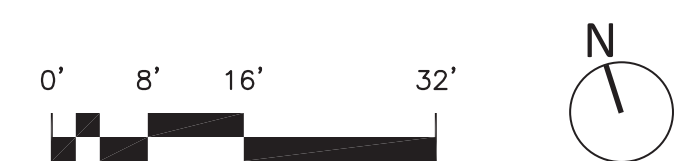


GROSS BUILDING AREA BY USE AND REQ'D PARKING TABLE					
BUILDING	USE	OCCUPANCY	BUILDING AREA (SF)	PARKING FACTOR	SPACES REQ'D
BUILDING 1	COMMERCIAL	B	13,918	330	42
	RESTAURANT + PATIO	A	6,132	330	19
	RESIDENTIAL	R2	8,001	1 per 4 Units	2
TOTAL BUILDING 1			28,051		63
BUILDING 2	COMMERCIAL	B	16,523	330	50
	RESIDENTIAL	R2	4,510	1 per 4 Units	1
	TOTAL BUILDING 2			21,032	
SUBTOTAL			49,084		114
TOTAL SHARED PARKING					(3)
GRAND TOTAL			49,084		111

NOTES: OCCUPANCY SUBTOTALS INCLUDE INCIDENTAL CORE AREAS.
PARKING COUNTS ARE BASED ON SHOPPING CENTER DESIGNATION



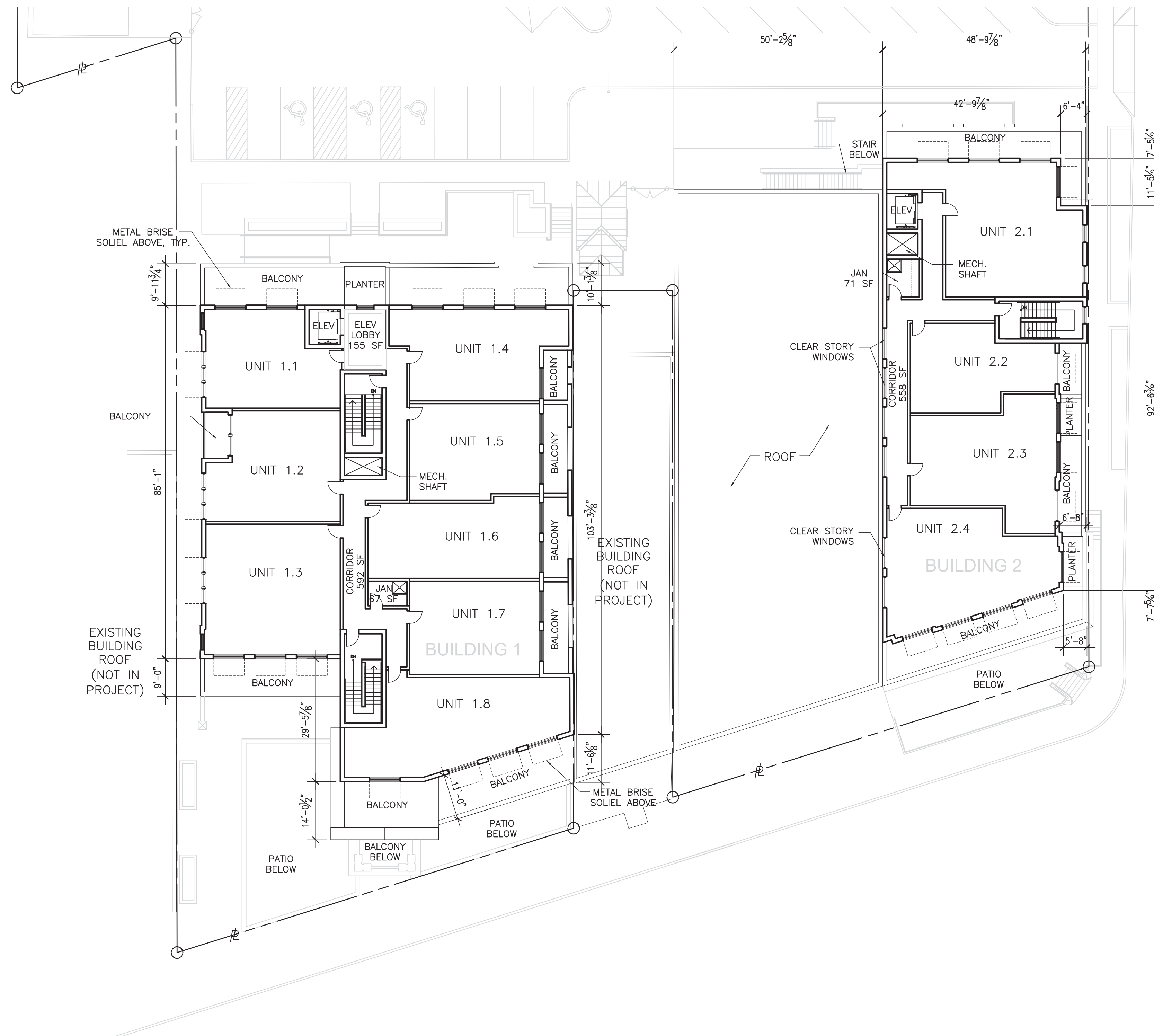
2 SECOND FLOOR PLAN
SCALE: 1/16" = 1'-0"



A2.00
2016 May 31

Westhampton on Grove
SUP Submission - Revised
Westhampton, LLC

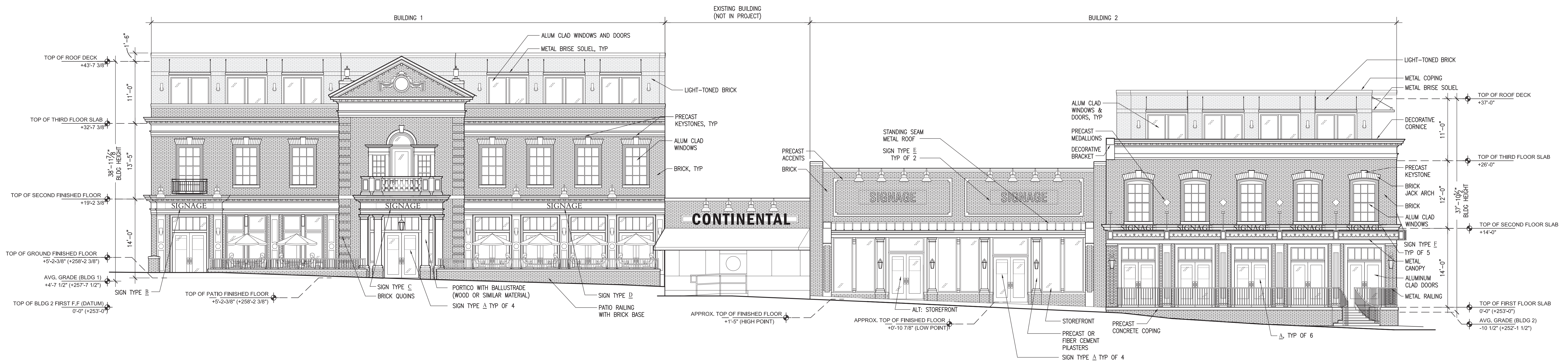




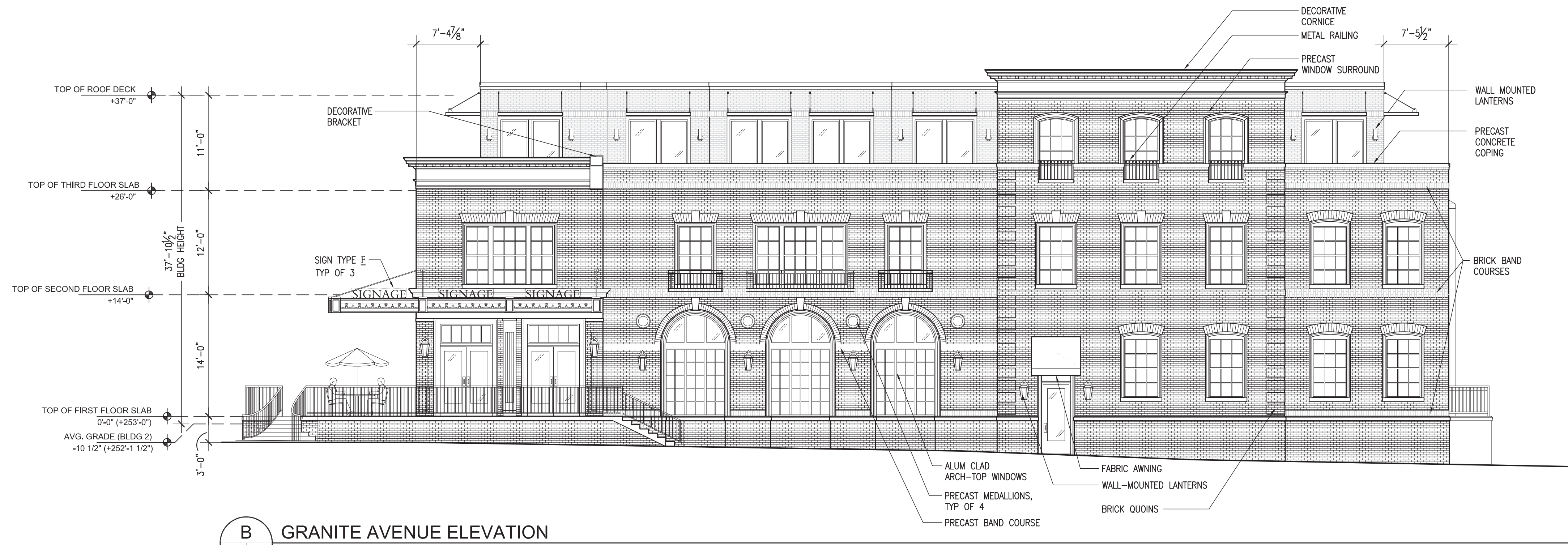
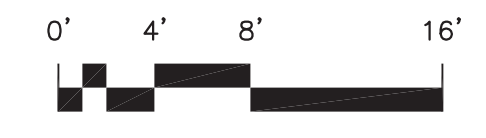
3 THIRD FLOOR PLAN
SCALE: 1/16" = 1'-0"

NOTE: LOCATIONS OF APARTMENT BALCONY ACCESS DOORS TO BE DETERMINED





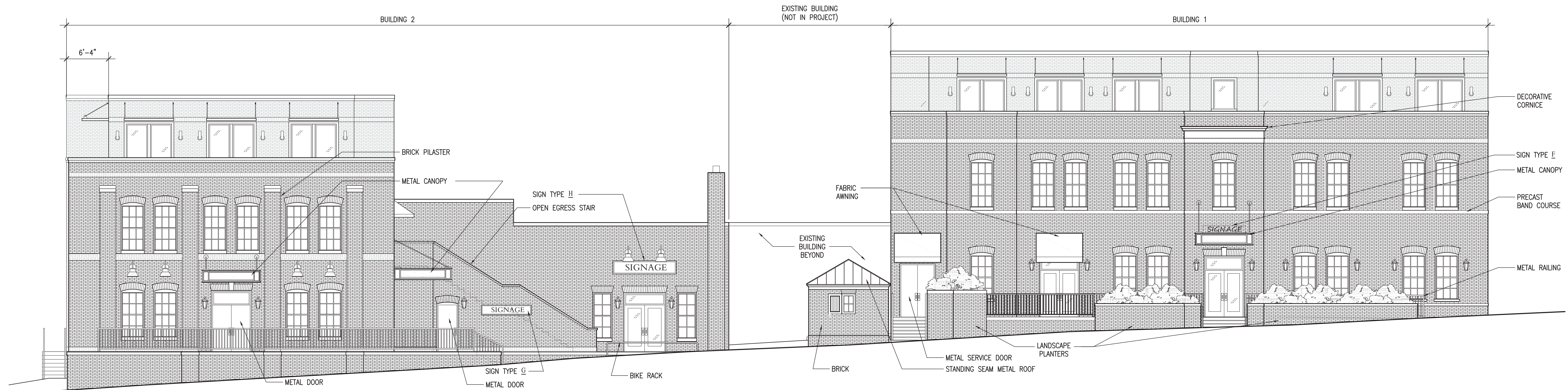
A GROVE AVENUE ELEVATION
 SCALE: 1/8" = 1'-0"



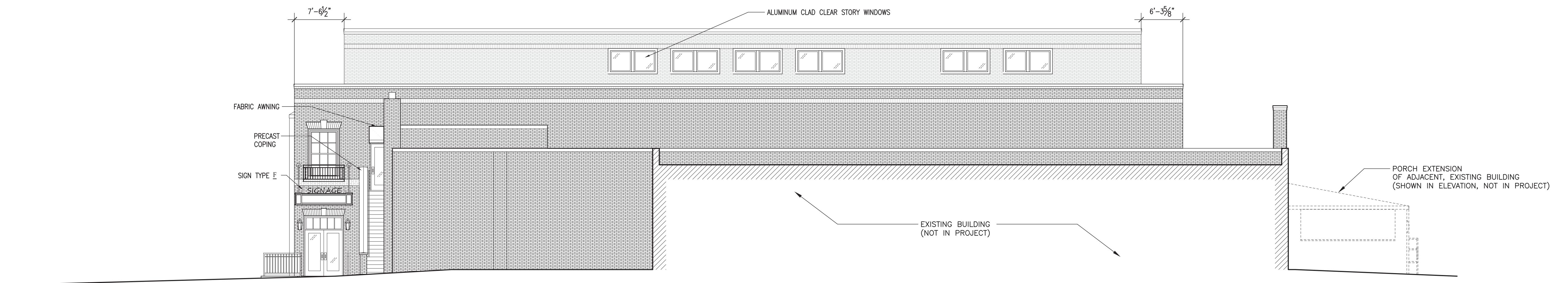
B GRANITE AVENUE ELEVATION
 SCALE: 1/8" = 1'-0"

SIGNAGE ALLOTMENT SCHEDULE

SIGN ID	SIGN TYPE	ALLOTMENT DIMENSIONS	ALLOTMENT AREA (SF)	NOTES	QTY	TOTAL ALLOTMENT AREA (SF)
A	GLASS DECAL	2'-0" X 2'-0"	4.00	DOOR DECAL	14	56.00
B	FIXED PANEL	8'-6" X 1'-0"	8.50	FRIEZE MOUNTED	1	8.50
C	FIXED PANEL	9'-0" X 1'-0"	9.00	FRIEZE MOUNTED	1	9.00
D	FIXED PANEL	18'-6" X 1'-0"	18.50	FRIEZE MOUNTED	1	18.50
E	FIXED PANEL OR PAINTED	12'-0" X 2'-6"	30.00	WALL MOUNTED	2	60.00
F	METAL CANOPY	6'-4" X 1'-2"	7.35	CANOPY SUPPORTED	9	66.12
G	FIXED PANEL	7'-6" X 1'-6"	11.25	WALL MOUNTED	1	11.25
H	FIXED PANEL	9'-6" X 2'-0"	19.00	WALL MOUNTED	1	19.00
					30	248.37

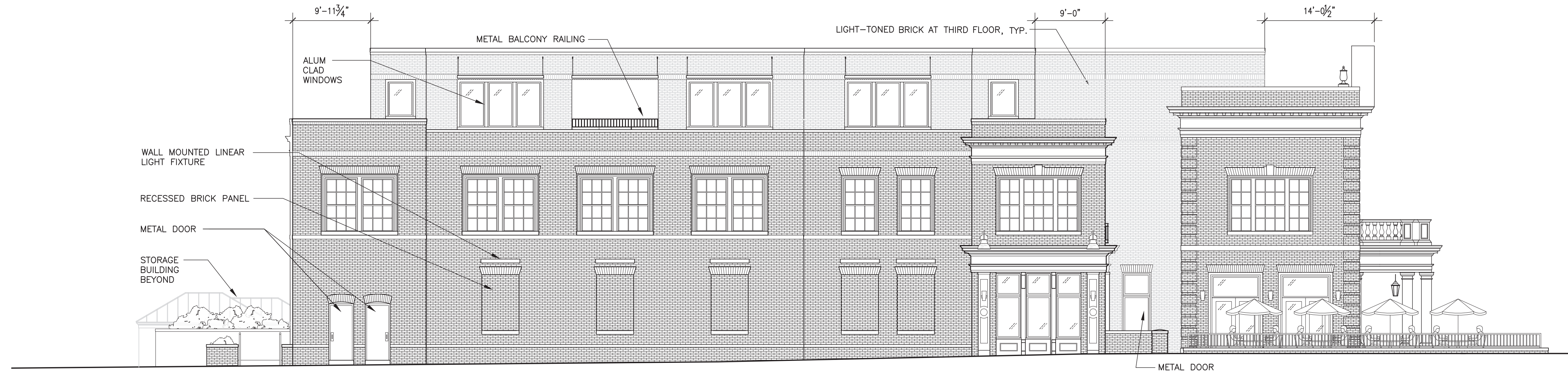


C REAR ELEVATION
SCALE: 1/8" = 1'-0"

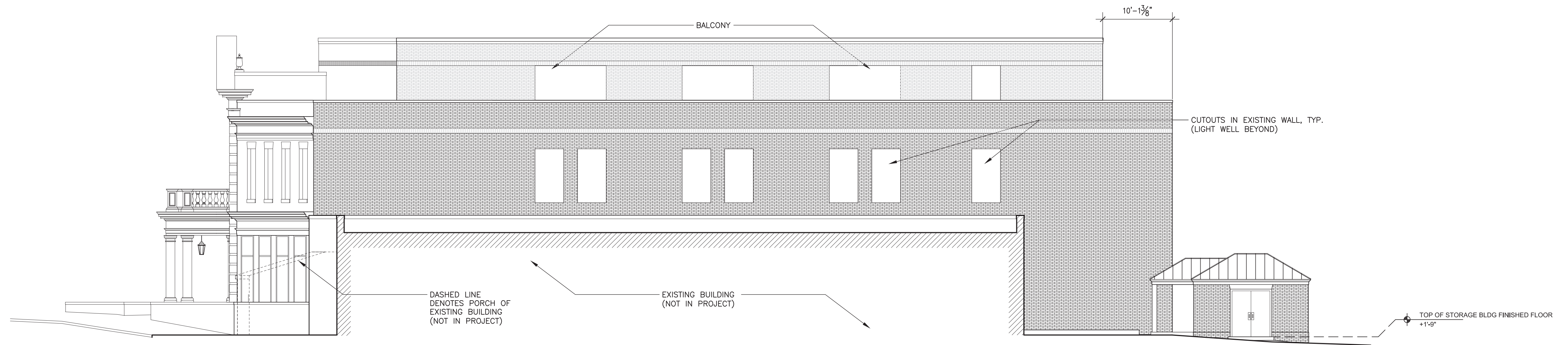


D BUILDING 2 - SIDE ELEVATION
SCALE: 1/8" = 1'-0"





E BUILDING 1 - PEDESTRIAN PATH ELEVATION
SCALE: 1/8" = 1'-0"



F BUILDING 1 - SIDE ELEVATION
SCALE: 1/8" = 1'-0"

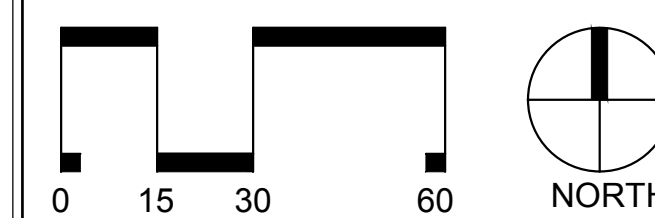


WESTHAMPTON ON GROVE

NOT FOR CONSTRUCTION

SPECIAL USE PERMIT

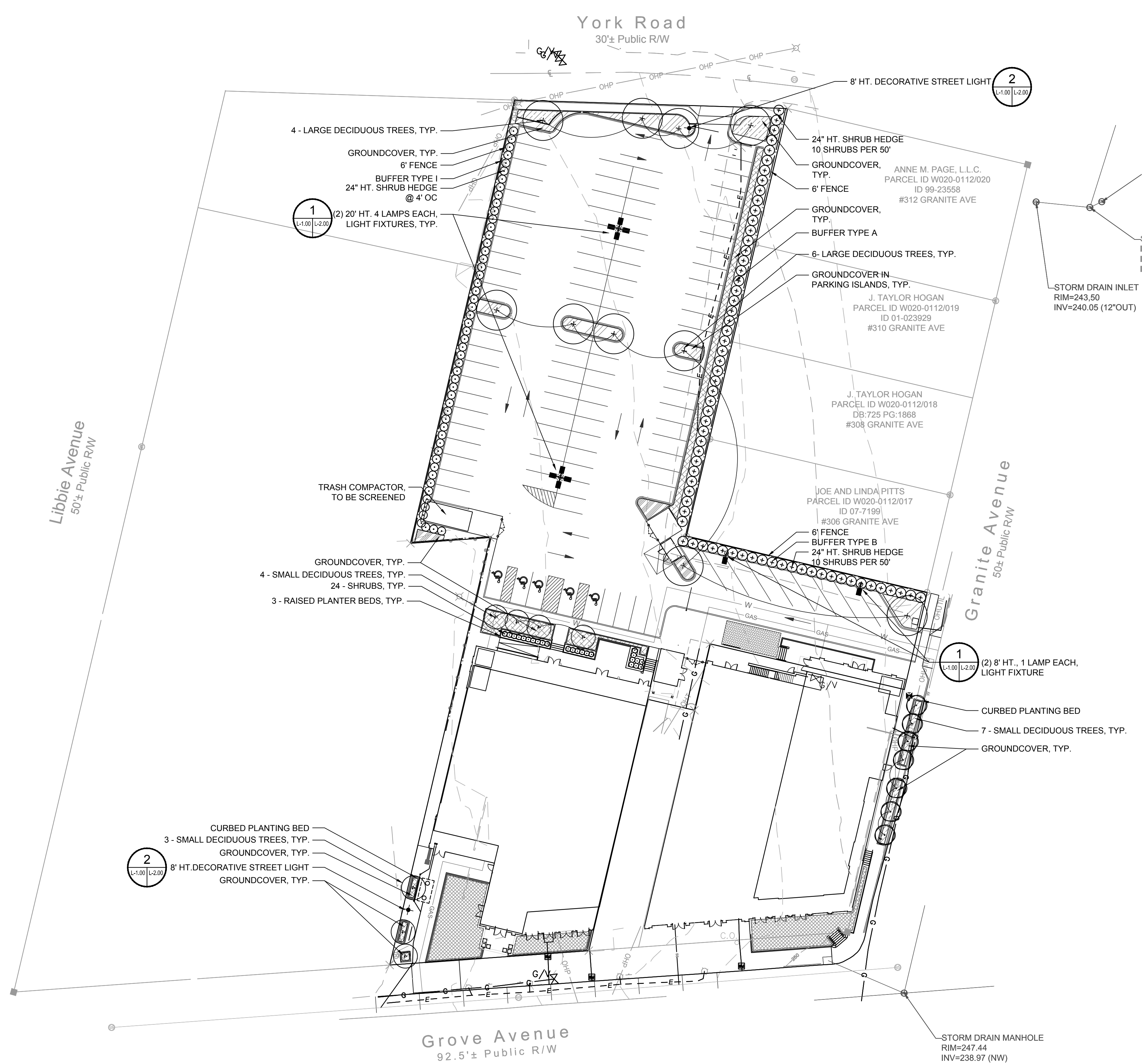
No.	Date	Description



SCALE: 1"=30'

LANDSCAPE AND LIGHTING PLAN

L1.00



PLANT MATERIAL SCHEDULE

BOTANICAL NAME	COMMON NAME	SPACING	CAL.	SIZE	ROOT TYPE	DETAIL	NOTES
TREES							
CAMELLIA JAPONICA	CAMELLIA	SHOWN		6' H, 4" W	CONT.		
LAGERSTROMIA INDICA 'SIOUX'	CRAPPE MYRTLE	SHOWN		10'H, 6"W	B&B		MULTI-TRUNK
ULMUS PARVIFOLIA	LACEBARK ELMS	SHOWN	2 1/2"	14"H, 6"W	B&B		MIN. 6' CLEAR TRUNK
SHRUBS							
ILEX VOMITORIA 'BORDEAUX'	YAUPON HOLLY			30" H, 24" W	7 GAL.		
LAGERSTROMIA INDICA 'RUBY DAZZLE'	DWARF CRAPPE MYRTLE	SHOWN		24" X 18"W	3 GAL.		
RHAPELIOUS INDICA	INDIAN HAWTHORNE	SHOWN		18"H, 18"W	3 GAL.		
GROUND COVER							
VINCA MINOR 'ALBA'	PERIWINKLE		8" OC	2"H, 4"W	4" POTS		
ECHINACEA CONEFLOWER	CHEYENNE SPIRIT		12" OC	6"H, 6"W	8" POTS		
LIRIOPE MUSCARI	LILYTURF		12" OC	6"H, 8"W	8" POTS		
MUHLENBERGIA CAPILLARIS	PINK MULY GRASS		24" OC	18"H, 18" W	1 GAL.		

CONTACT: CHARLENE HARPER

Client:

WESTHAMPTON, LLC
350 PEMBROKE LAND
GOOCHLAND, VA 23238
CONTACT: STEFAN CAMELAS

Project:

WESTHAMPTON ON GROVE

Vicinity map:

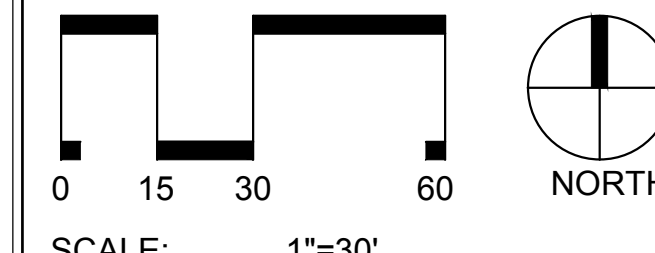
Seal:

NOT FOR CONSTRUCTION

Issued for:

SPECIAL USE PERMIT

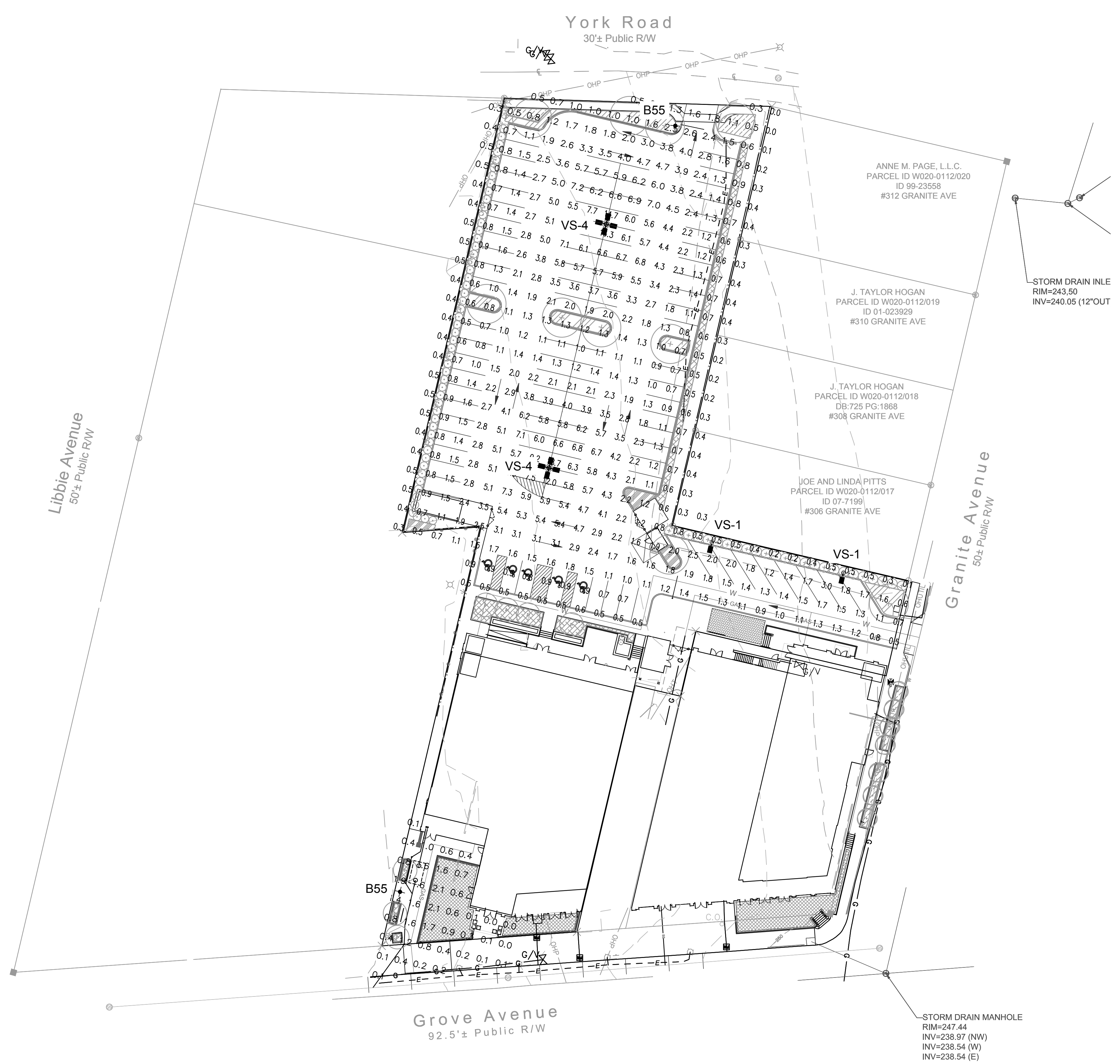
No.	Date	Description



Title:

PHOTOMETRIC LIGHTING PLAN

Project number: M15038 Sheet:
Date: 05.31.2016
Drawn by: ATS
Approved by: DCG **L1.01**



CALCULATION SUMMARY

AREA	UNITS	AVG	MAX	MIN	AVG/MIN
PARKING AREA	FC	2.77	22.40	0.5	7.22
SITE	FC	2.31	22.40	0.0	26.72

LUMINAIRE SCHEDULE

SYMBOL	QTY	LABEL	ARRANGEMENT	DESCRIPTION	MOUNTING HEIGHT
⊕	2	VS-4	4 @ 90 DEGREES	VP-S-48NB-110-4K-T4	20'
⊙	2	VS-1	SINGLE	VP-S-24NB-55-4K-T4	8'
+	2	B55	SINGLE	BOS40-24NB-55-4K-DIR4	8'

VIPER S SERIES SMALL VIPER LUMINAIRE Cat # Job Type Approvals

Specifications Intended Use The Beacon Viper luminaire is available in two sizes with a wide choice of different LED Wattage configurations and optical distributions designed to replace HID lighting up to 100W MH or HPS. Luminaires are suitable for wet locations.

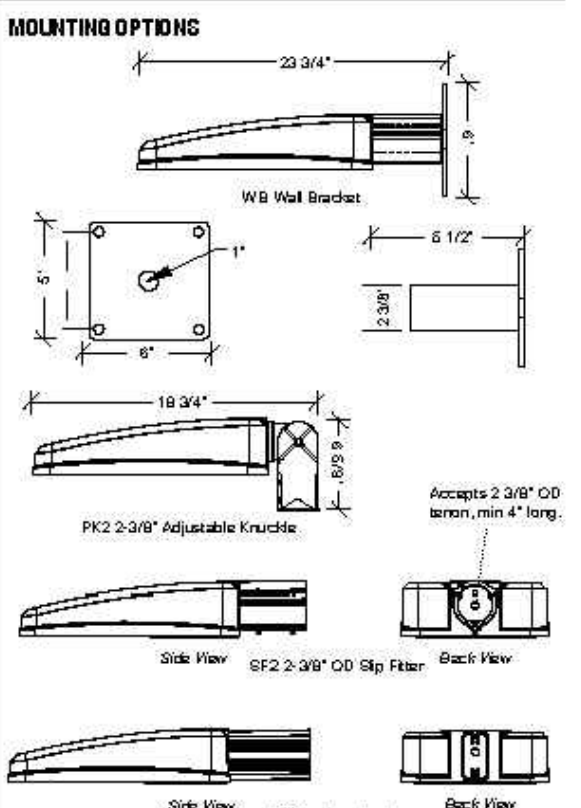
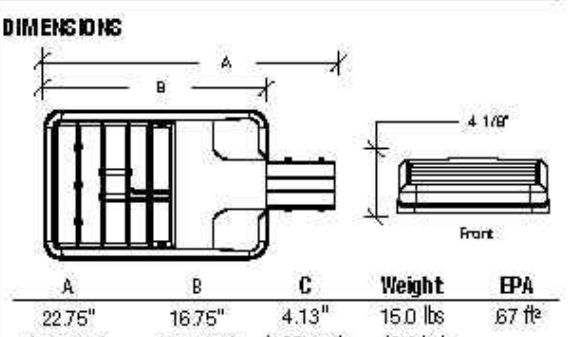
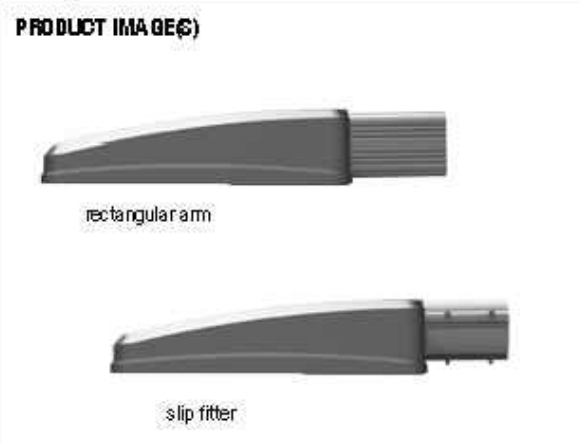
Construction • One-piece optical cartridge system consisting of an LED engine, LED lamps, optics, gasket and stainless steel bezel. • Castings are heat treated with internal brass standards soldered to the board so that it can be field replaced as a one piece optical system.

LED Options • LED driver accepts 100V through 277V, 50 Hz to 60 Hz (UNV) or a driver that accepts 347V or 480V input. • Power factor is .92 at full load.

Electrical • Feature electrical compartment shall contain all LED driver components and shall be provided with a push-button terminal block for AC power connections.

Finish • Beacon V polyester powder-coat electrostatically applied and thermocured. • Beacon V finish consists of a fine stage pretreatment regimen with a polymer primer sealer and top coated with a thermocured super TGIC polyester powder coat finish.

Warranty Five year limited warranty for more information visit: http://www.hubbelling.com/resources/warranty/



PERFORMANCE DATA

Table with columns for # LEDs, Drive Current (mA), System Watts, Distribution Type, and Lumen output (lm) for various configurations (SK, RK).

*Lumen values are from photometric tests performed in accordance with IESNA LM-79-08. Data is considered to be representative of the configurations shown. Actual performance may differ as a result of end-user environment and application.

Product page for Beacon BOS40 (LED) 40" Bostonian Luminaire. Includes BEACON logo, project name, max weight (50.0 lbs), max EPA (3.94 sq ft), ordering code, details of the luminaire, mounting options, and electrical data.

Beacon Products • 2041 58th Avenue Circle East Bradenton, FL 34203 • Phone: 800-345-4928 Due to our continued efforts to improve our products, product specifications are subject to change without notice.

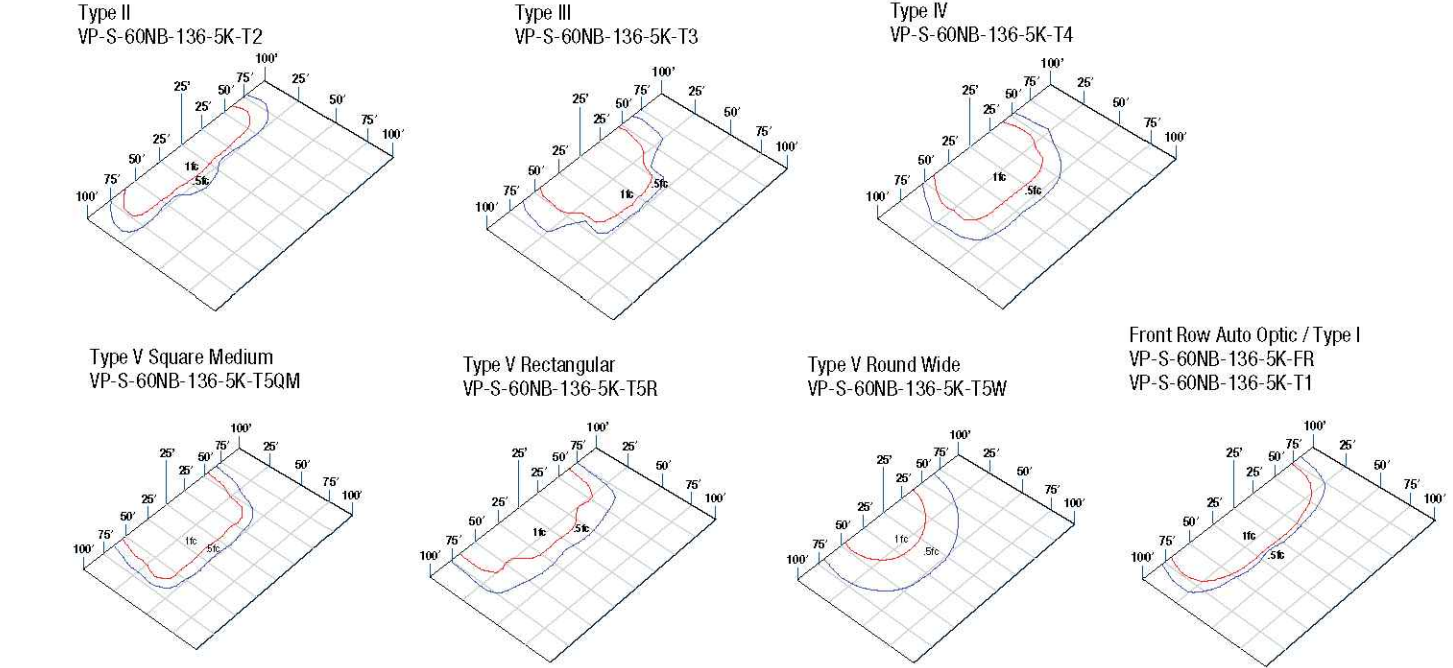
Beacon Products • 2041 58th Avenue Circle East Bradenton, FL 34203 • Phone: 800-345-4928 Due to our continued efforts to improve our products, product specifications are subject to change without notice.

ORDERING INFORMATION ORDERING EXAMPLE: VPS30NB-90/SK/TSR/UNV/PCR-TL/SF-2/GENIXX/BLCOR/BBT

Ordering information table with columns for Series, Engine-Watts, LED Color, Voltage, Electrical Options, Control Options, and Finish.

MO ORDERING INFORMATION: When ordering a fixture with the motion detection option (MDO), please specify the appropriate information. These settings are specified in the ordering chart in the example below.

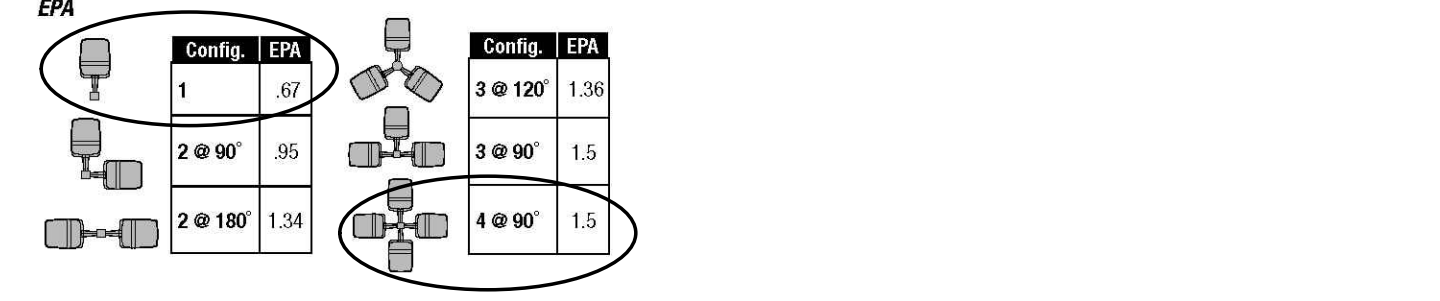
PHOTOMETRICS



Beacon Products • 2041 58th Avenue Circle East Bradenton, FL 34203 • Phone: 800-345-4928 Due to our continued efforts to improve our products, product specifications are subject to change without notice.

ELECTRICAL DATA PROJECTED LUMEN MAINTENANCE

Electrical data table with columns for # of LEDs, Drivers, Drive Current, Input Voltage, System Power, and Projected Lumen Maintenance at different ambient temperatures.



EPA



Beacon Products • 2041 58th Avenue Circle East Bradenton, FL 34203 • Phone: 800-345-4928 Due to our continued efforts to improve our products, product specifications are subject to change without notice.

Product page for Beacon BOS40 (LED) 40" Bostonian Luminaire. Includes BEACON logo, project name, max weight (50.0 lbs), max EPA (3.94 sq ft), and mounting details.

Mounting: All cast aluminum parts shall be low copper alloy A356. All extruded aluminum parts shall be alloy 6061-T6, 6063-T5 or equal. Construction: The upper chamber/LED shall be topped by a decorative cast aluminum finish/cap and mechanically fastened to the optical chamber.

Finish: Finish shall be a Beacon V polyester powder-coat electro-statically applied and thermocured. Beacon V finish shall consist of a fine stage iron phosphate chemical pretreatment regimen with a polymer primer sealer, oven dry off, and top coated with a thermocured super TGIC polyester powder coat finish.

Power Supply/Driver Requirements: UL, UL1310, Class 2 and UL48 compliant Color Rendering Index (CRI): Luminaire shall have a minimum CRI of 67 at 5000K. Operating Environment: Shall be able to operate normally in ambient temperatures from -40°C to 40°C.

LifeShield™ Circuit: Thermal circuit shall protect the luminaire from excessive temperatures by interfacing with its 0-10V dimmable driver to reduce drive current as necessary. The factory preset temperature limits shall be designed to ensure maximum hours of operation to assure L70 rated lumen maintenance.

Thermal circuit shall be designed to "fall off", allowing the luminaire to revert to full power in the event of an interruption of its power supply, or faulty wiring connection to the drivers.

Device shall be able to co-exist with other 0-10V control devices (occupancy sensors, external dimmers, etc.). The device will effectively control the solder joint temperature as needed, otherwise it will allow the other control devices to function unimpeded.

Surge Protector: The on-board surge protector shall be a UL recognized component for the United States and Canada and have a surge current rating of 20,000 Amps using the industry standard 8/20 μsec wave. The LSP shall have a clamping voltage of 820V and surge rating of 50kA. The cable shall be a high-temperature, flame resistant plastic enclosure.

Electrical: Luminaires are equipped with LED driver(s) that accept 90 through 305 VAC, 50 Hz to 60 Hz (UNV). Power factor is .92 at full load. All electrical components are rated at 50,000 hours at full load and 25°C ambient conditions per MIL-217F Notice 2.

When ordering Energies, specify the routine wiring code (example GEN-04). See Energies brochure and instructions for setting tabs and options. Not available with sensor options. *consult factory

2041 58th Avenue Circle East Bradenton, FL 34203 Phone: (800) 345-4928 Fax: (941) 751-5535 SPECIFICATION

STEWART HG logo and address: 5701 GROVE AVENUE RICHMOND, VA 23226

CONTACT: CHARLENE HARPER WESTHAMPTON, LLC 350 PEMBROKE LAND GOOCHLAND, VA 23238

CONTACT: STEFAN CAMETAS WESTHAMPTON ON GROVE

Project: WESTHAMPTON ON GROVE

Vicinity map: WESTHAMPTON ON GROVE

NOT FOR CONSTRUCTION

SPECIAL USE PERMIT

Table with columns for No., Date, and Description for special use permits.

Lighting Details: LIGHTING DETAILS

Project number: M15038 Sheet: Date: 05.31.2016

Drawn by: DSS Approved by: DCG L2.00