

SUP APPLICATION

910A & 910B PARRISH STREET

910A & 910B PARRISH ST
RICHMOND, VA 23226



8/31/2022
REVISED 10/07/2022
REVISED 12/20/2022
REVISED 6/22/2023

LANDSCAPE KEY NOTES 

- 1. SMALL SHRUB IN MULCHED BED
- 2. MEDIUM SHRUB IN MULCHED BED
- 3. CONCRETE OR STONE PAVERS
- 4. SEEDED LAWN
- 5. GRAVEL PAD FOR TRASH RECEPTACLES



Proposed Site - 910 A & B Parrish St
 1" = 10'-0" 

REVISIONS
 3. NEIGHBORHOOD COMMENT RESPONSE
 6.23.2023

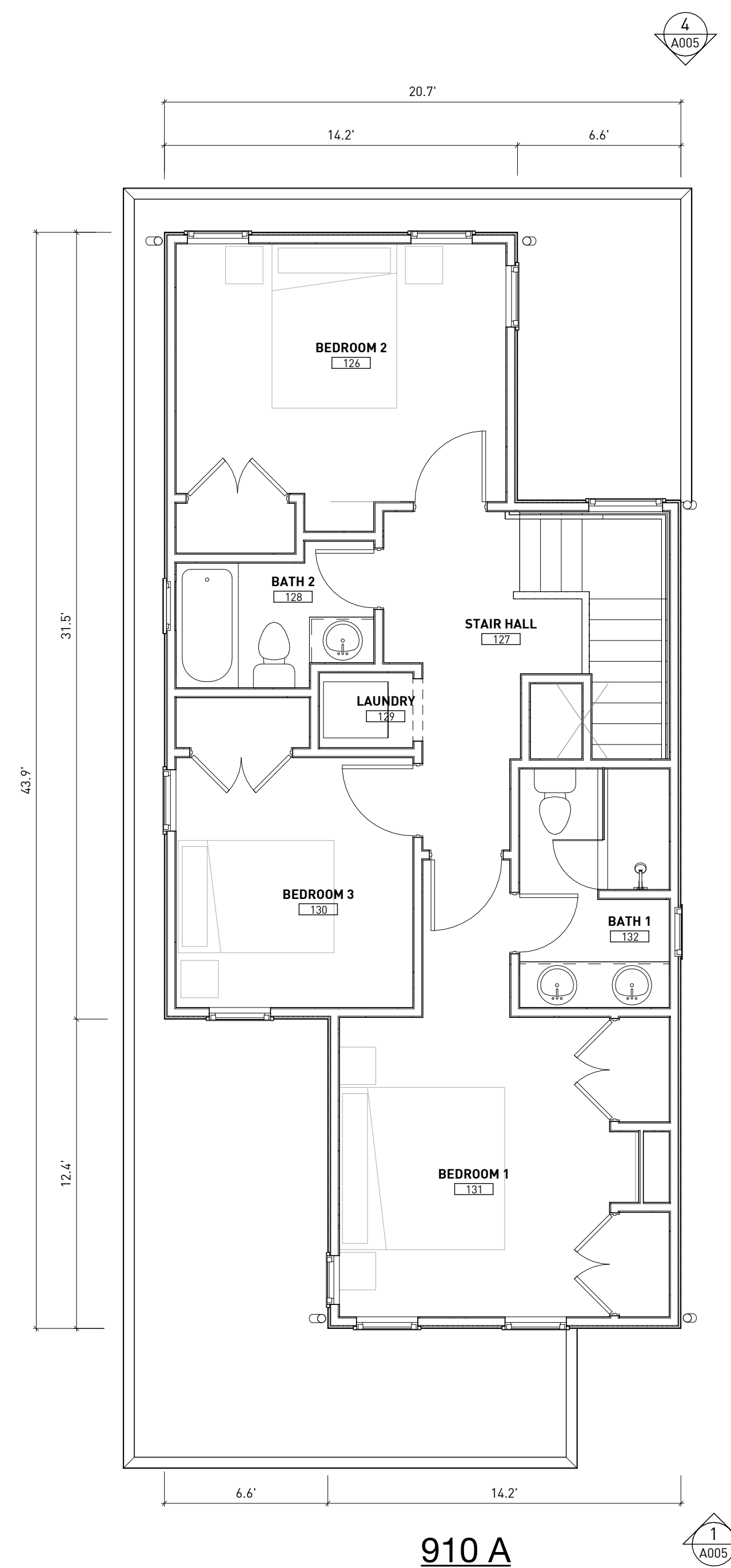
910A & 910B PARRISH STREET
 910A & 910B PARRISH ST
 RICHMOND, VA 23226

8/31/2022 SUP APPLICATION

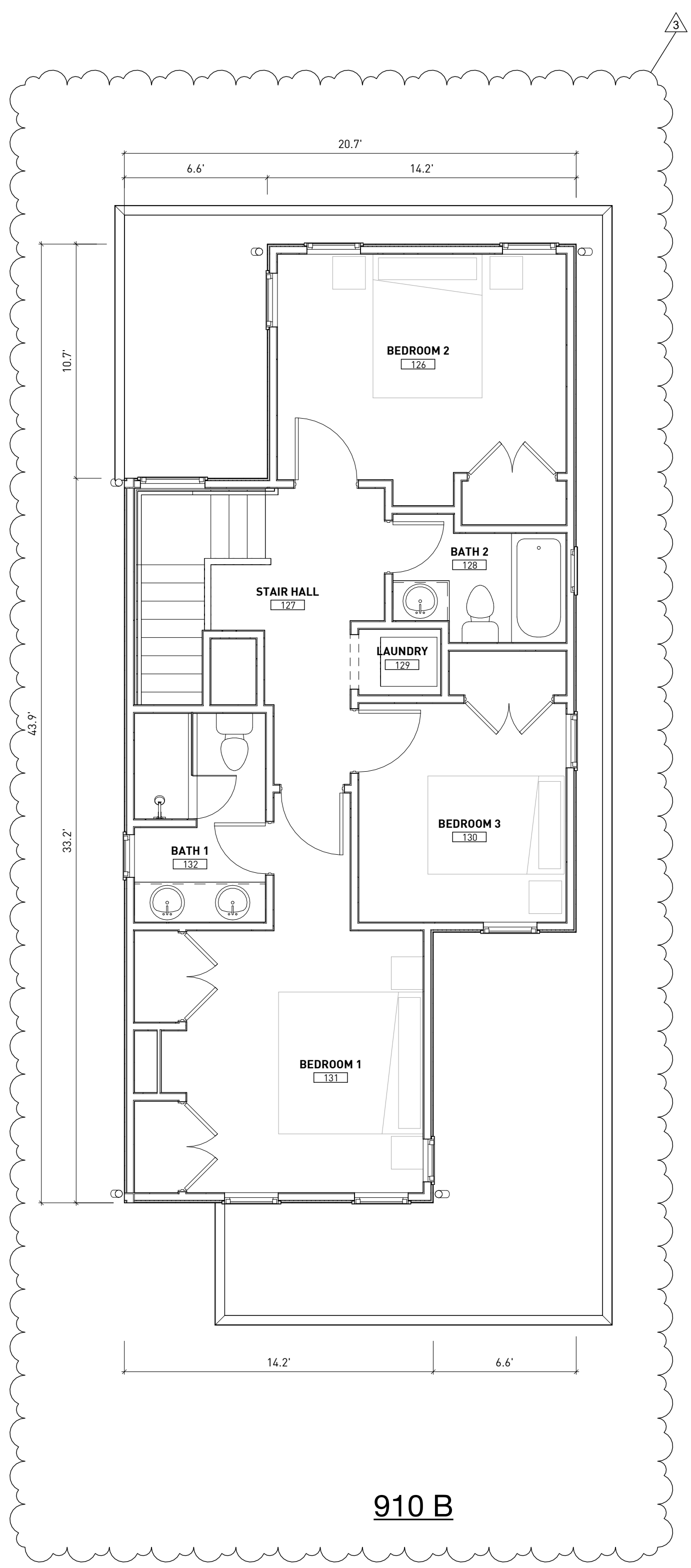
A003
 SITE PLAN



718-541-7030

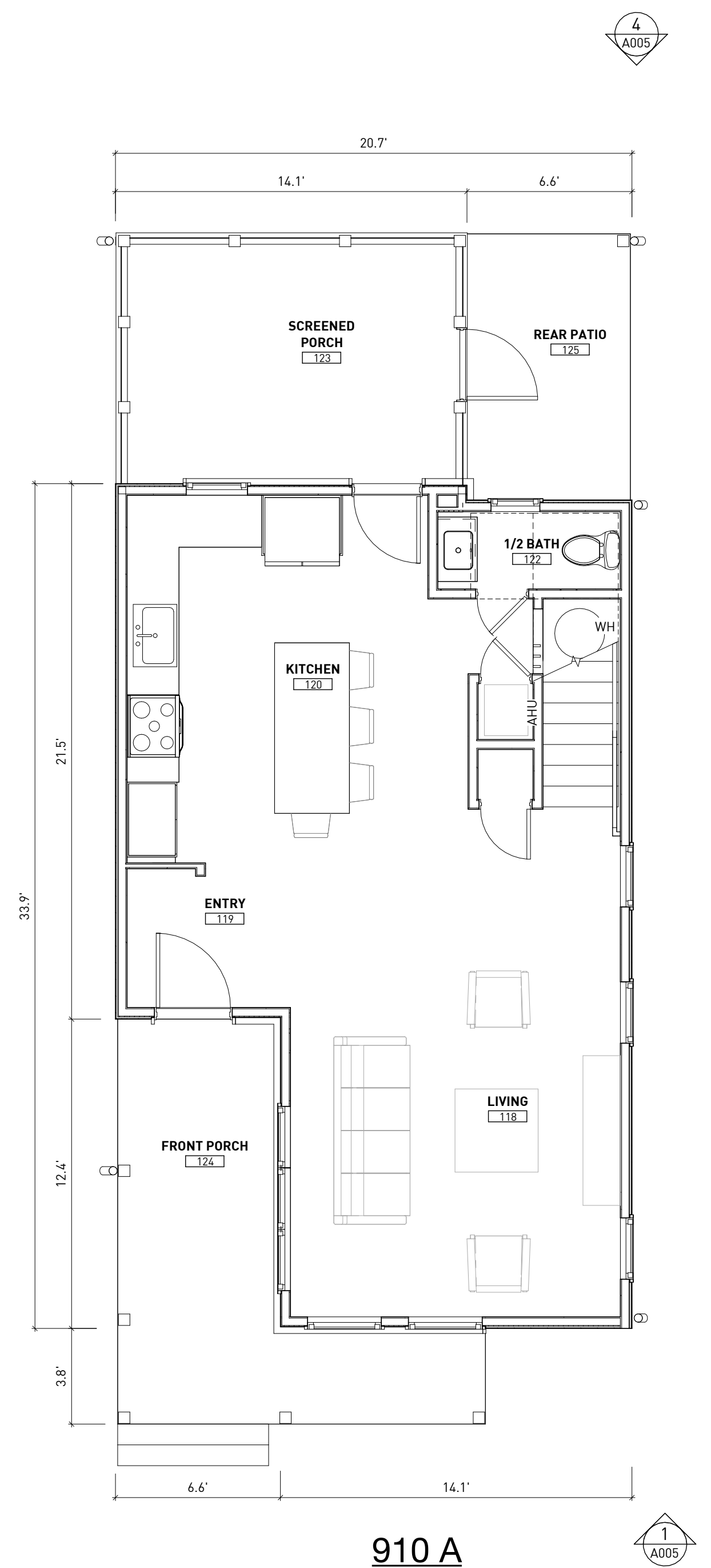


910 A

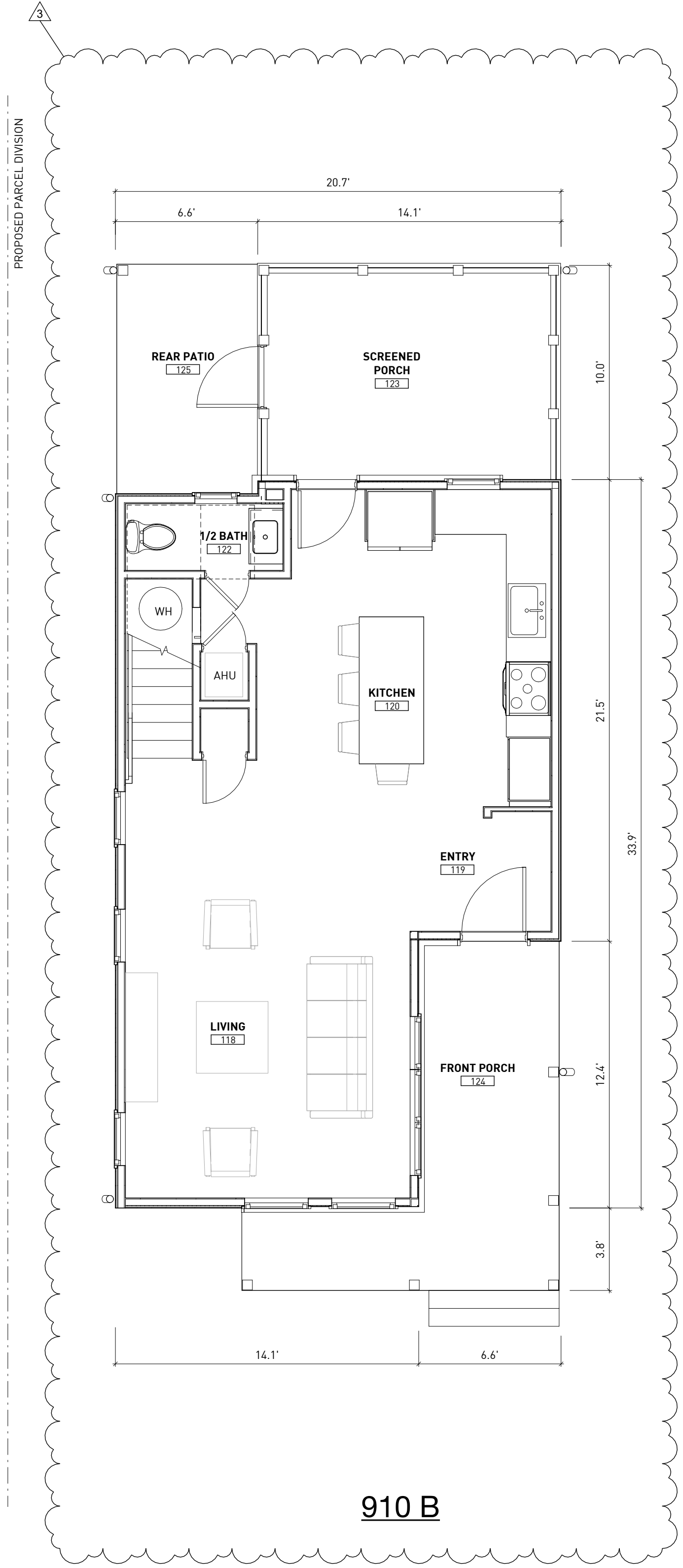


910 B

LEVEL 2 - 910 A & B
1/4" = 1'-0" 2



910 A



910 B

LEVEL 1 - 910 A & B
1/4" = 1'-0" 1



FRONT - LOOKING NORTHWEST 2



FRONT - LOOKING SOUTHWEST 3



907 PARRISH 5
1/4" = 1'-0"

REVISIONS
3 NEIGHBORHOOD COMMENT RESPONSE
6/23/2023

910A & 910B PARRISH STREET
910A & 910B PARRISH ST
RICHMOND, VA 23226

SUP APPLICATION

8/31/2022

A005
EXTERIOR VIEWS



718-541-7030

