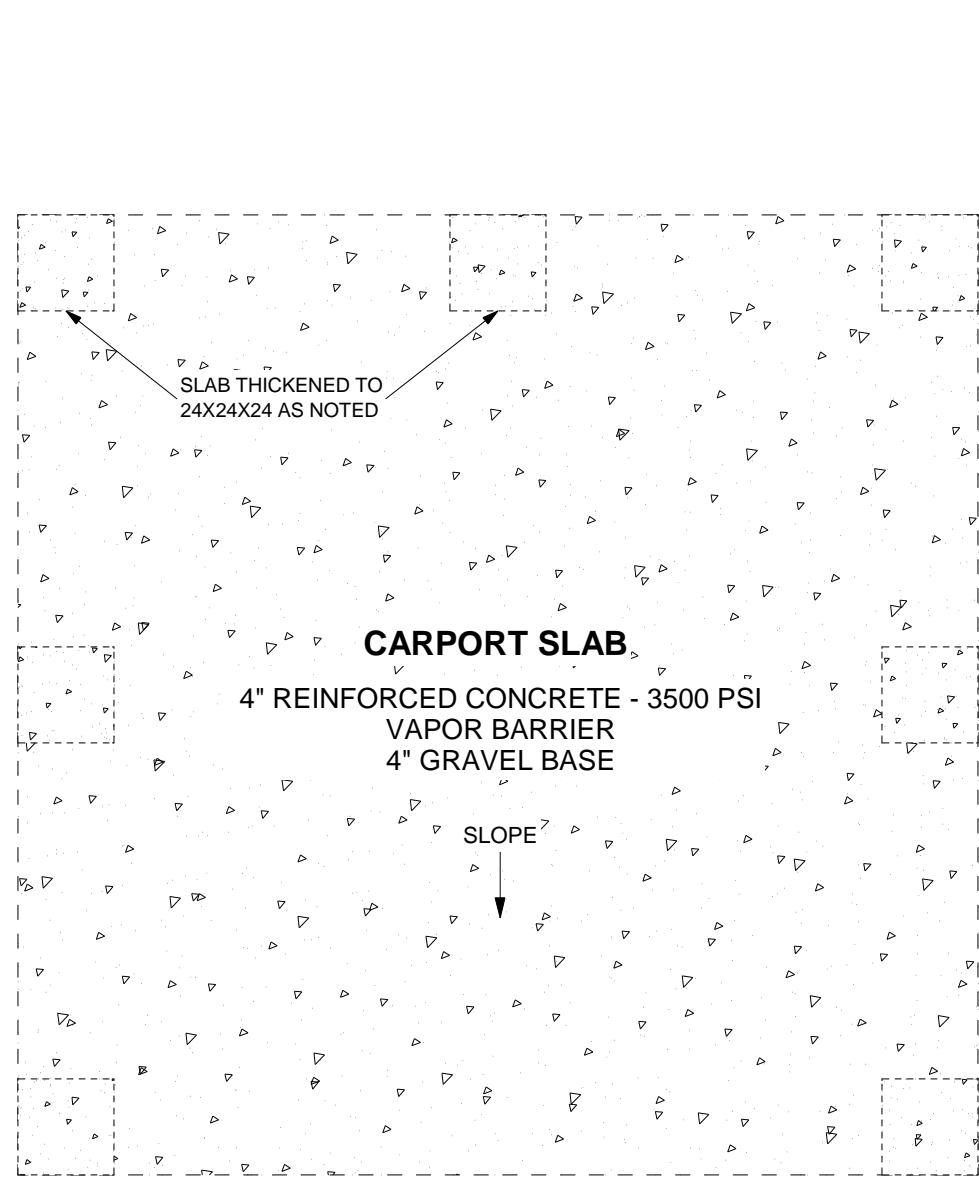




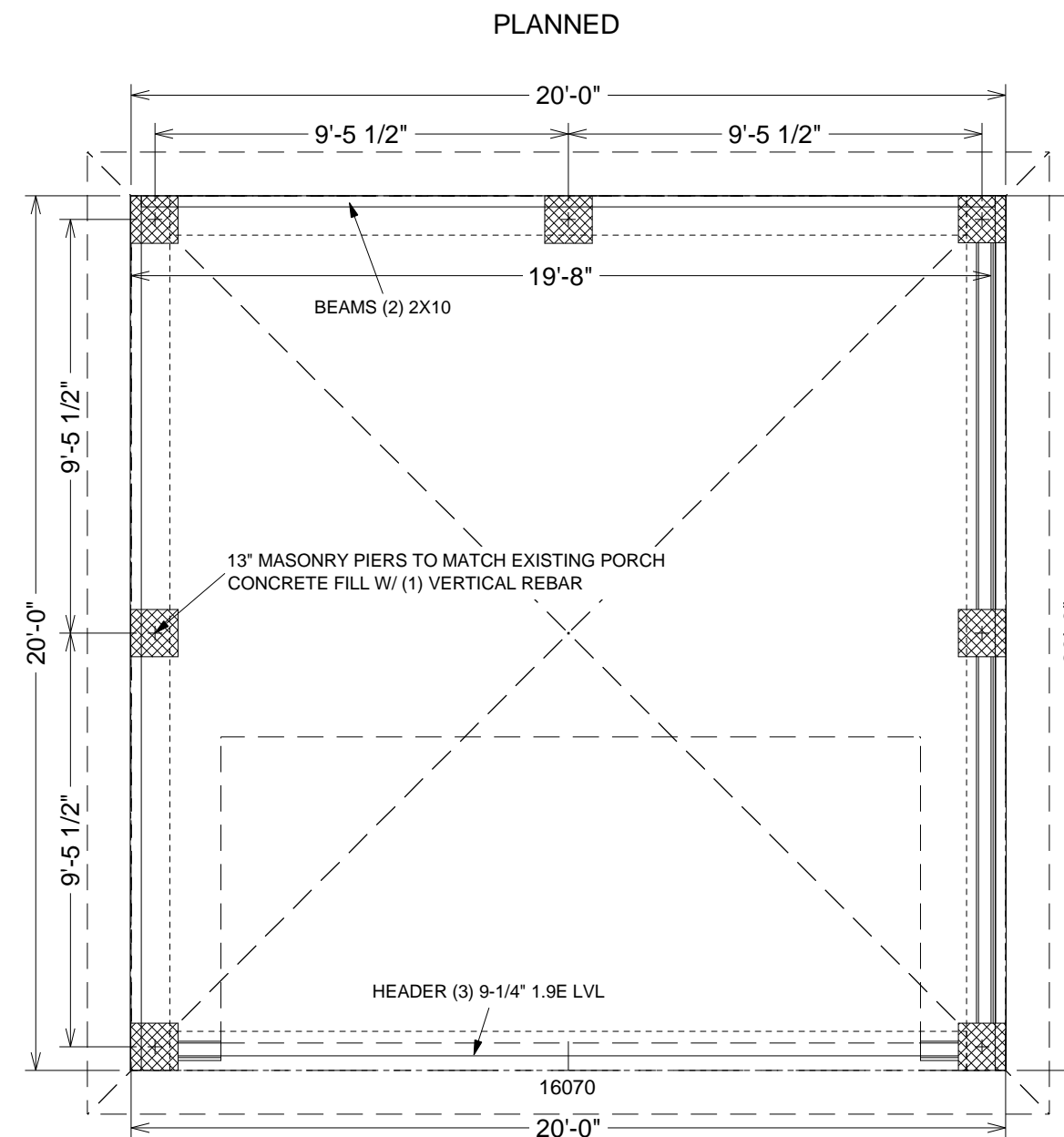
ALL LUMBER #2 YELLOW PINE EXCEPT AS NOTED

IT IS THE RESPONSIBILITY OF THE CONTRACTOR TO VERIFY MEASUREMENTS, SITE CONDITIONS AND CODE COMPLIANCE BEFORE PROCEEDING.

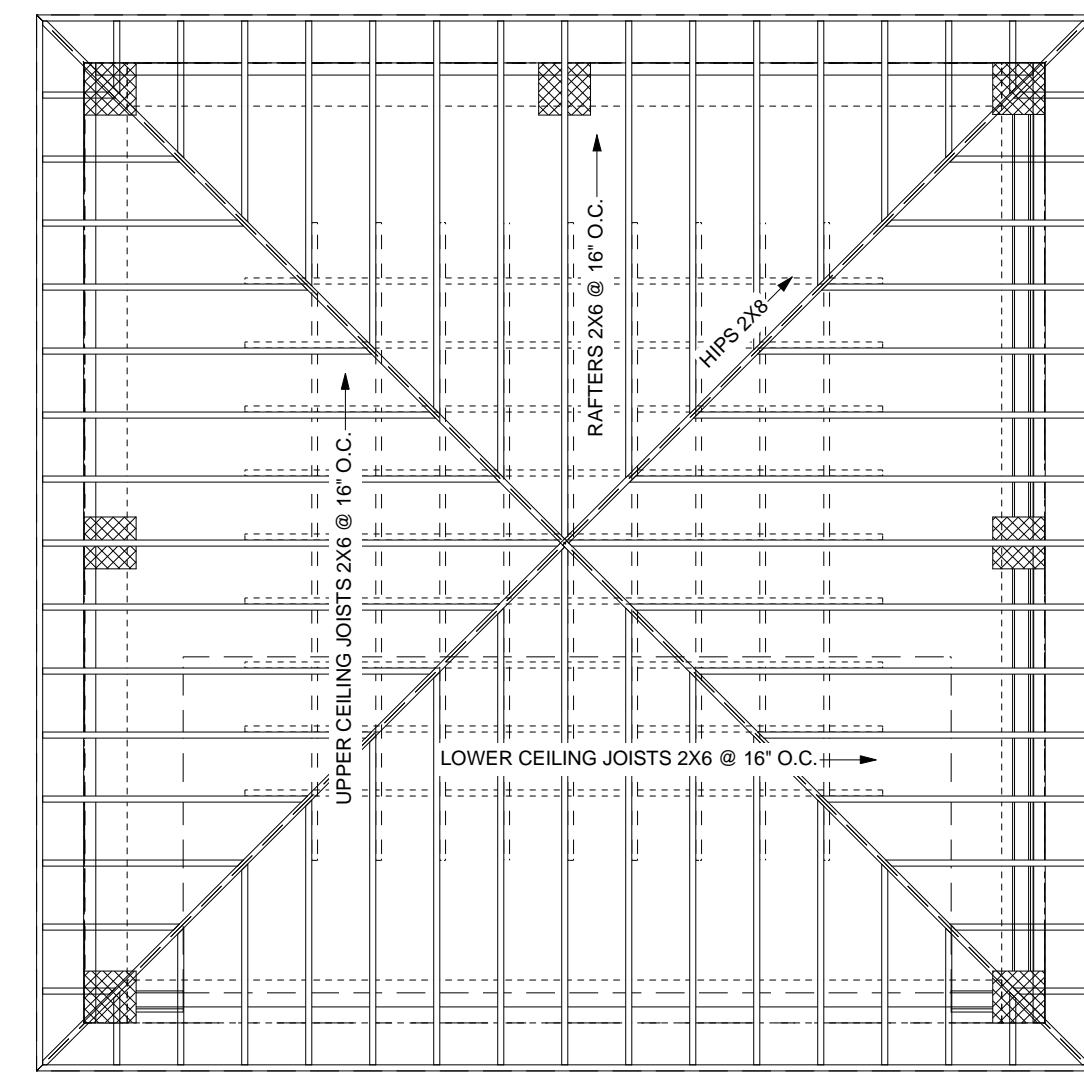
THESE PLANS ARE INTENDED TO ADHERE TO THE 2009 INTERNATIONAL RESIDENTIAL CODE



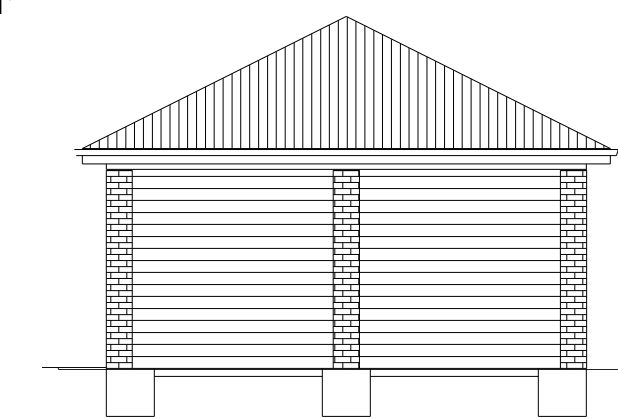
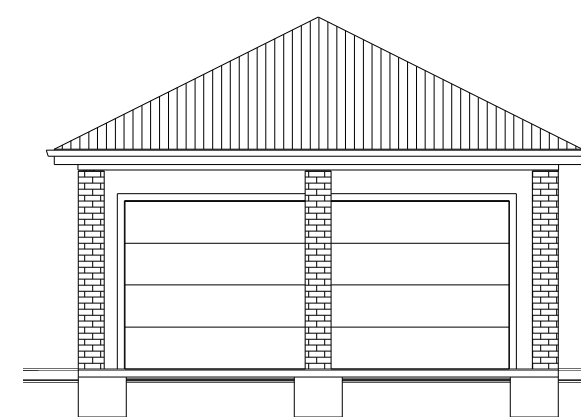
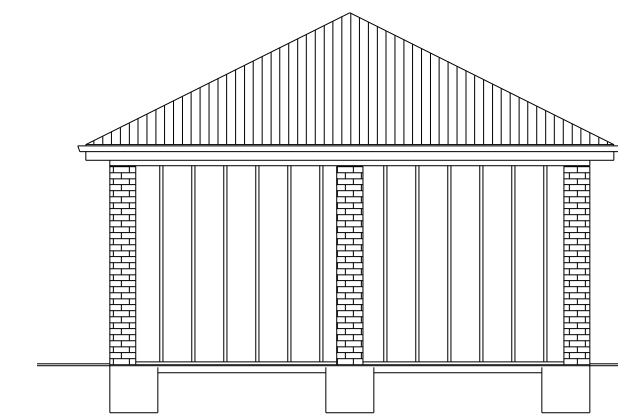
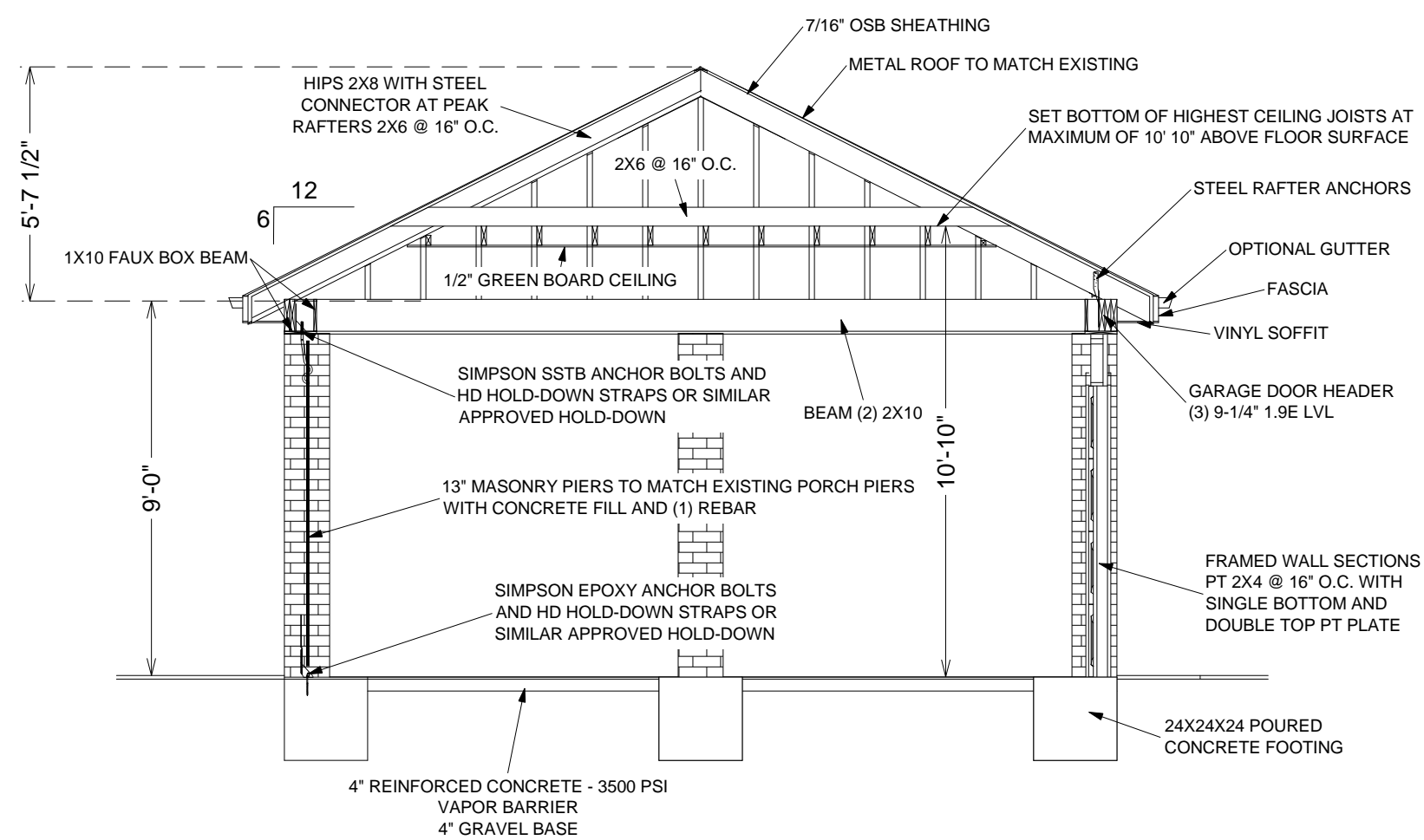
FOUNDATION
Scale: 1/4" = 1'



CARPORT PLAN
Scale: 1/4" = 1'



ROOF FRAMING
Scale: 1/4" = 1'



ELEVATIONS
Scale: 1/8" = 1'

CITY/COUNTY APPROVAL:

Drawn by: MAG
Date: 10/09/14

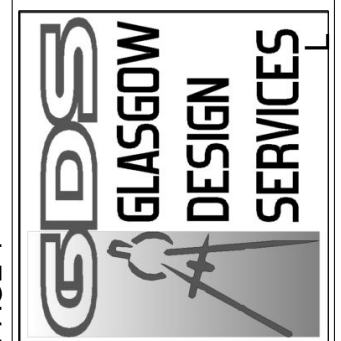
THESE DRAWINGS ARE THE PROPRIETARY WORK PRODUCT AND PROPERTY OF GLASGOW DESIGN SERVICES, LLC. DEVELOPED FOR THE EXCLUSIVE USE OF GLASGOW DESIGN SERVICES, LLC. AND THE CLIENTS FOR WHOM THEY WERE COMMISSIONED. ANY 3-D IMAGES AND RENDERINGS ARE INTENDED ONLY TO ILLUSTRATE THE DESIGNER'S CONCEPTS, AND THEIR ACCURACY IS NOT GUARANTEED. IT IS THE RESPONSIBILITY OF THE CONTRACTOR TO VERIFY MEASUREMENTS, SITE CONDITIONS AND CODE COMPLIANCE BEFORE PROCEEDING.

PROJECT: Powers Carport

PROJECT COORDINATOR:

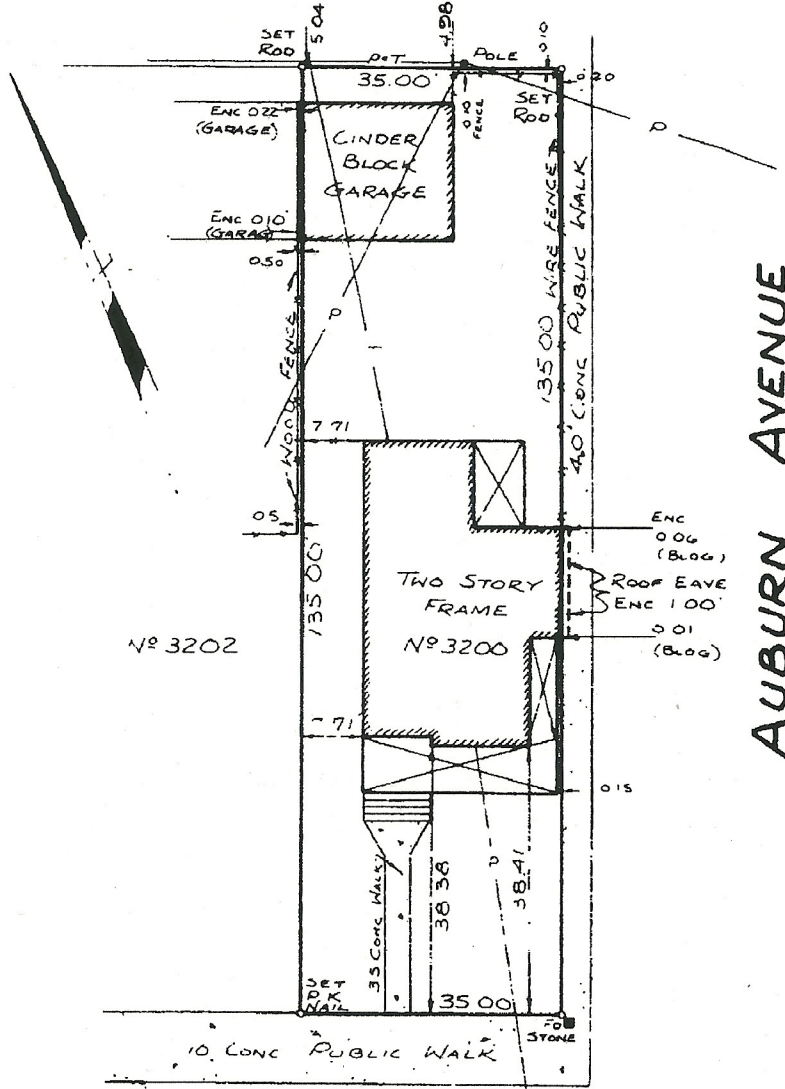
CUSTOMER APPROVAL:

PO BOX 1441
MIDLOTHIAN, VA 23113
(804) 938-1196
www.glasgowdesign.net



15' ALLEY

BOOK 714 PAGE 2015



AUBURN AVENUE

FLOYD AVENUE

PLAT OF
No 3200 FLOYD AVENUE
CITY OF RICHMOND, VIRGINIA.

Date: NOVEMBER 22, 1976
J.N. 2124

Scale: :20

HOLLY & SPAIN, Ltd.
Professional Land Surveyors
Mechanicsville, Virginia