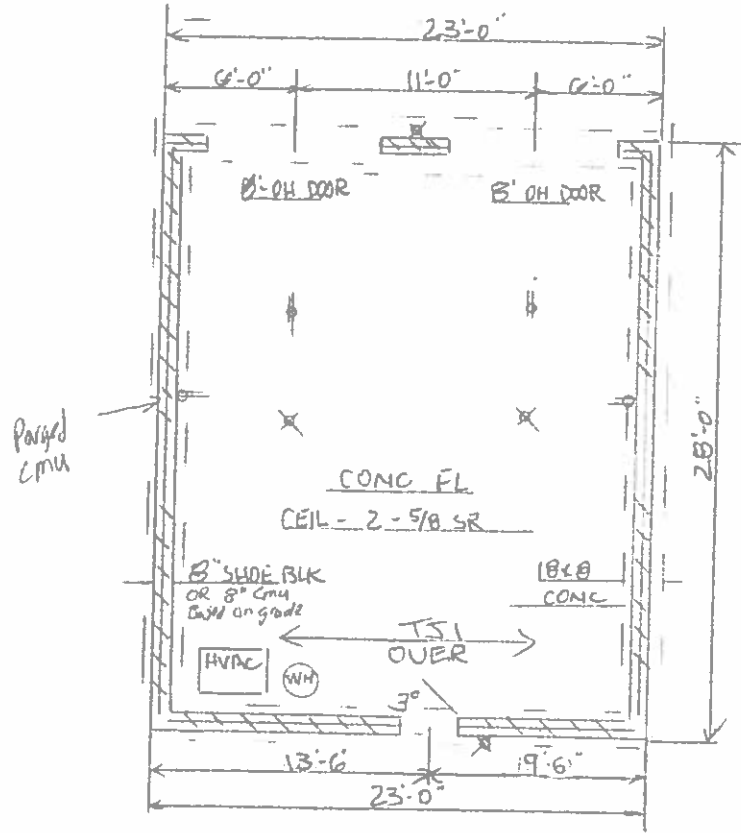
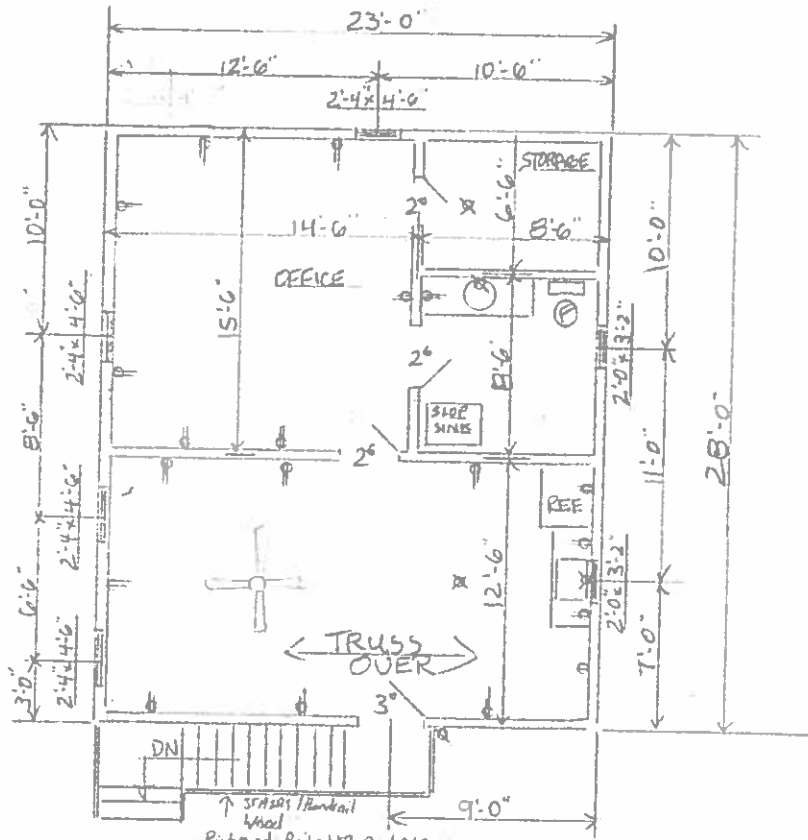


Public Alley

Public Alley



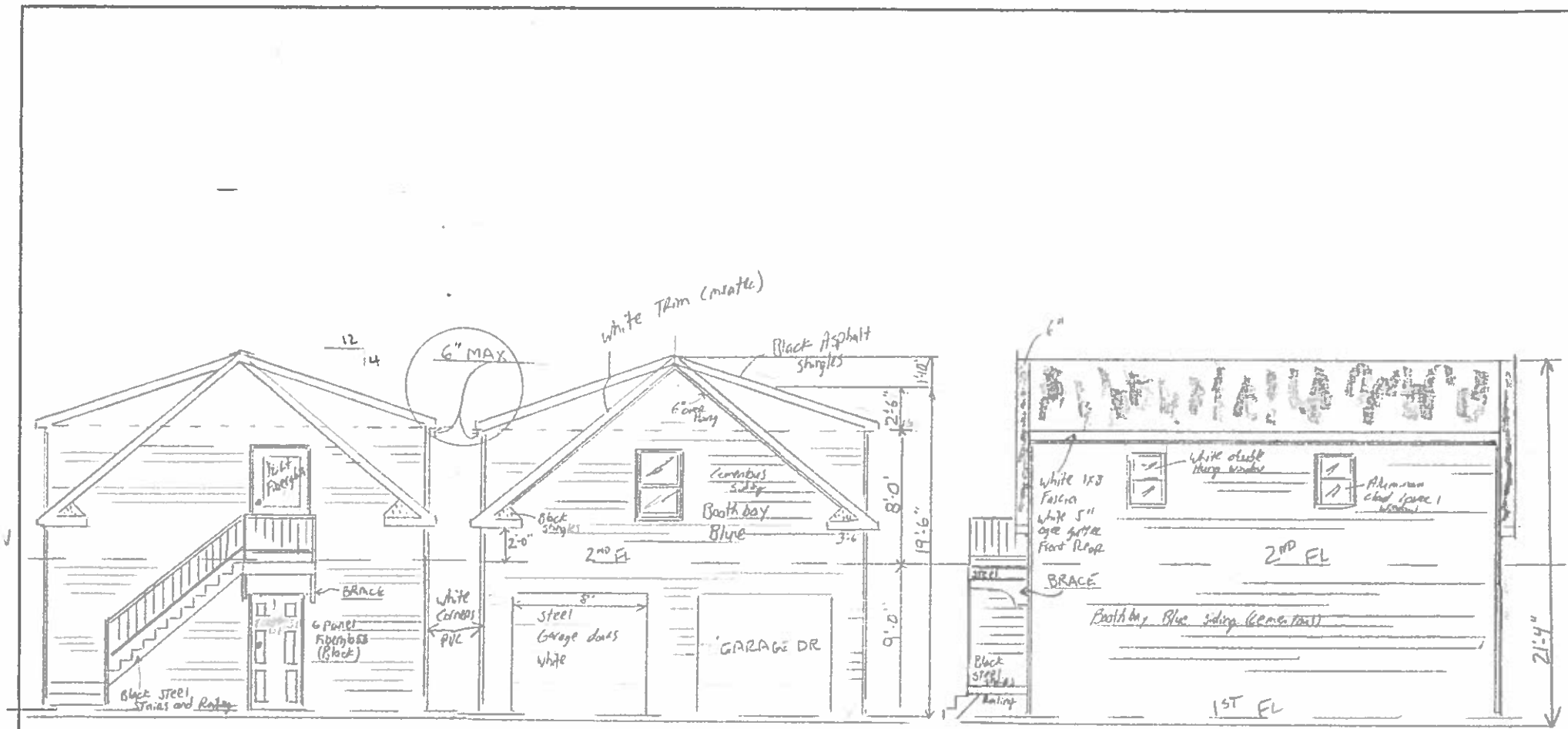
FIRST FL GARAGE



SECOND FL

202 West 15th

UNLIMITED RENOVATIONS LLC		APPROVED BY	DRAWN BY
SCALE 1/4" = 1'-0"	DATE DEC 2015	REVISED	
DRAWING NUMBER		1 OF 3	



FRONT ELE

REAR ELE
Public Alley

RIGHT SIDE ELE

202 WEST 15TH STREET

DOORS AND WINDOWS TO BE SET AT
6'-8" - GARAGE DOORS AT 8'-0"
SILLS DEPEND ON WINDOW SIZE

UNLIMITED RENOVATIONS LLC		DRAWN BY	T
SCALE: 1/4" = 1'-0"	APPROVED BY:	DATE	REVISED
DATE DEC 2015			
		DRAWING NUMBER	2 OF 2

