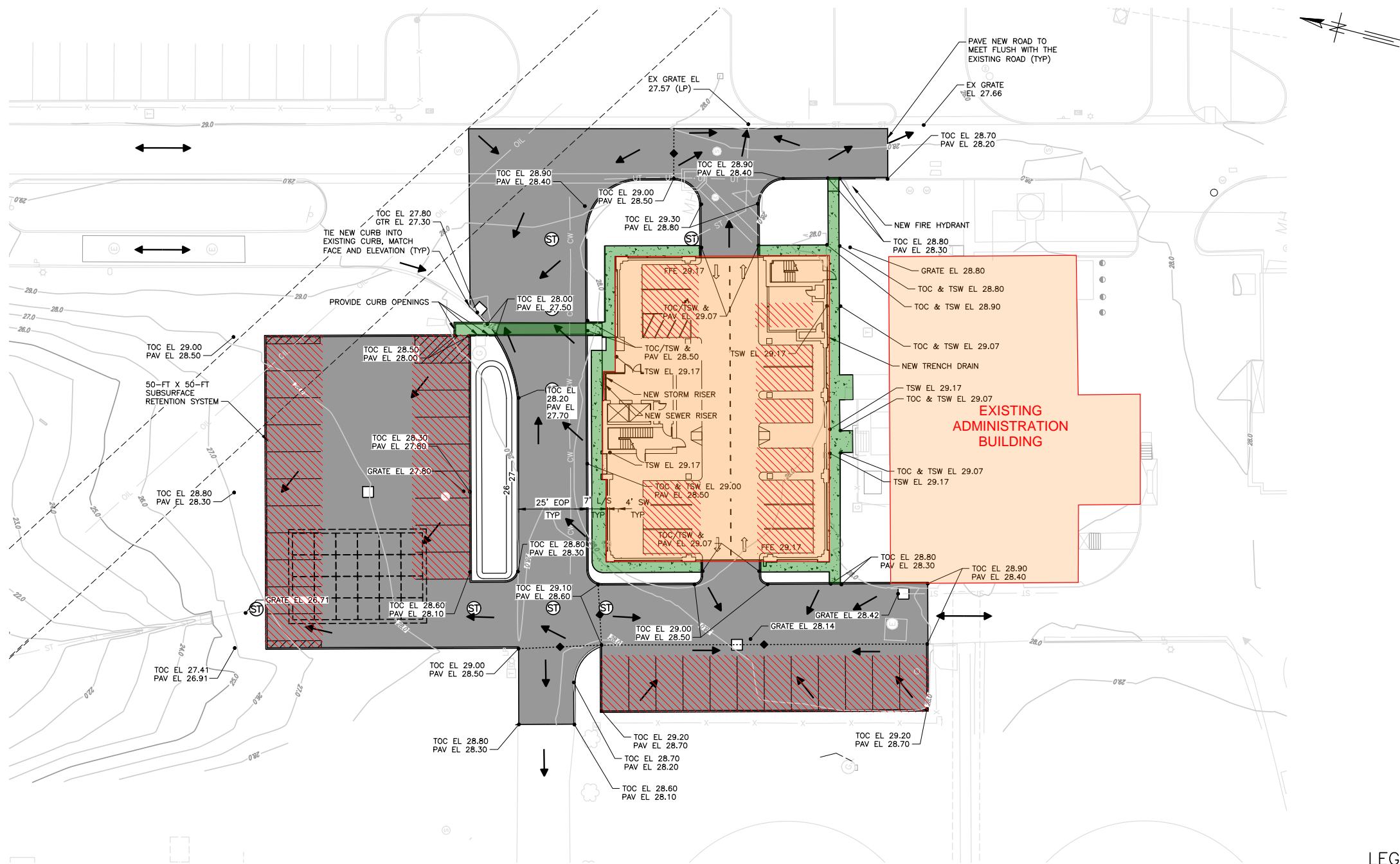


Attachment A: Site Plan



- NEW STRUCTURES / BUILDINGS
- EXISTING STRUCTURES / BUILDINGS
- PEDESTRIAN ROUTES
- PARKING

NEW SITE PLAN
SCALE: 1" = 20'

- LEGEND:**
- FLOW ARROW
 - GRADE BREAK
 - EXISTING LINWORK
 - FUTURE BY OTHERS
 - NEW WORK PER THIS CONTRACT

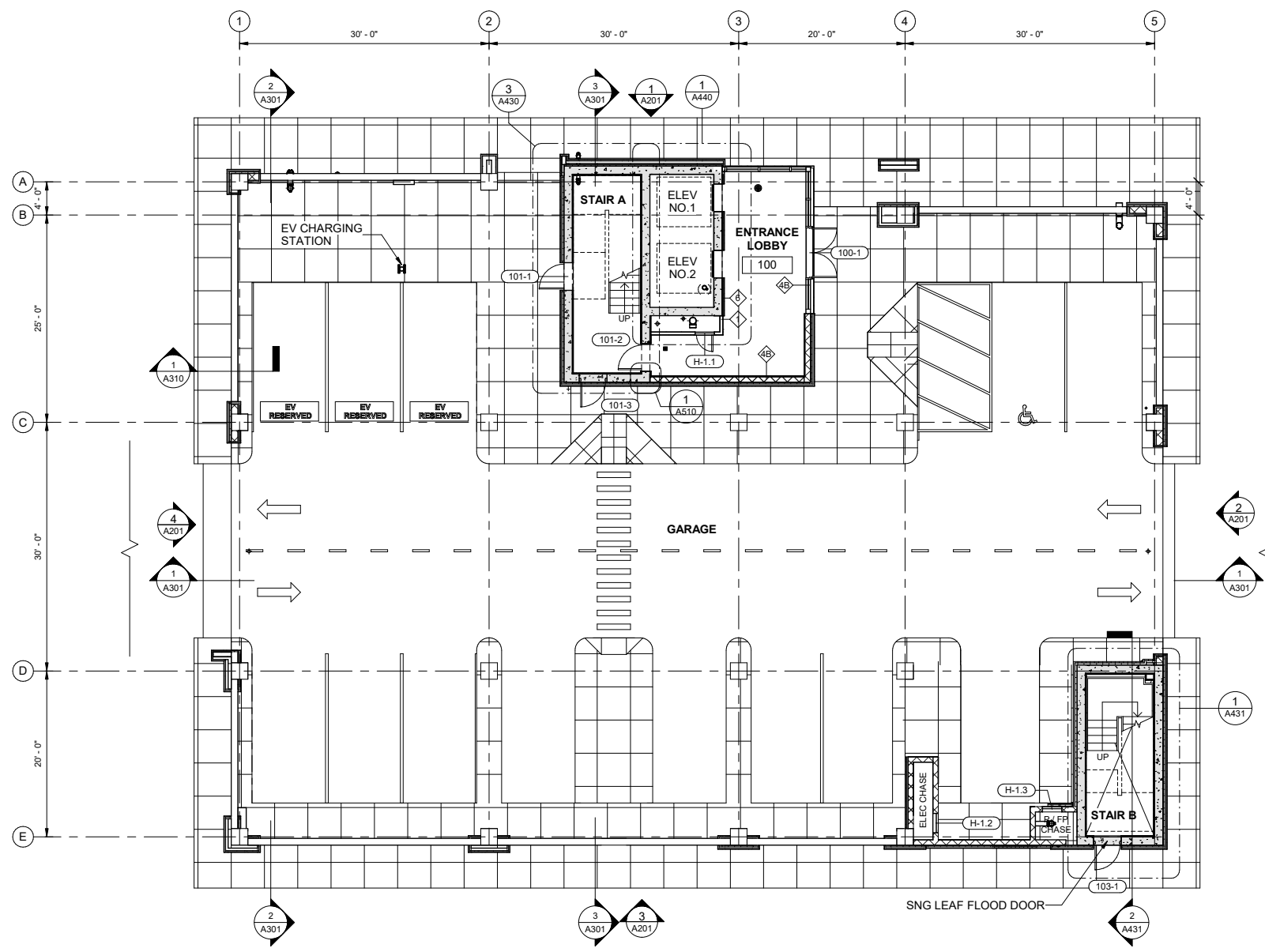
- NOTES:**
1. ALL NEW CURB TO BE 6" TALL.
 2. ALL WORK SHOWN EAST OF ADMINISTRATION BUILDING IS BY OTHERS.

PROGRESS SET
09-20-22

S:\0218 - RICHMOND\0218B-16 - RICHMOND ADMIN BUILDING FINAL DESIGN\CIVIL\3DC\0218B00 - C107 Y.AHR. RONALD 2022/09/20 1:07 PM

<p>GREELEY AND HANSEN 9020 STONY POINT PARKWAY, SUITE 275 RICHMOND, VIRGINIA 23235</p>	DESIGNED AS	APPROVED	NO. DATE APPD DESCRIPTION		SCALE	CITY OF RICHMOND, VIRGINIA DEPARTMENT OF PUBLIC UTILITIES		CIVIL	PROJECT NO.: 0218B.16
	DRAWN CS				20 0 20 40 FT 1"=20'	WWTP ADMINISTRATION BUILDING			DWG C107
CHECKED AS								SHEET OF ###	DATE NOVEMBER 2022 REV
								FINAL SITE PLAN	

Attachment B: Floor Plans



- NOTES:**
1. ELEVATIONS ARE IN NAVD88.
 2. ENCLOSED AREAS AT GRADE ARE TO BE DRY FLOOD PROOFED.

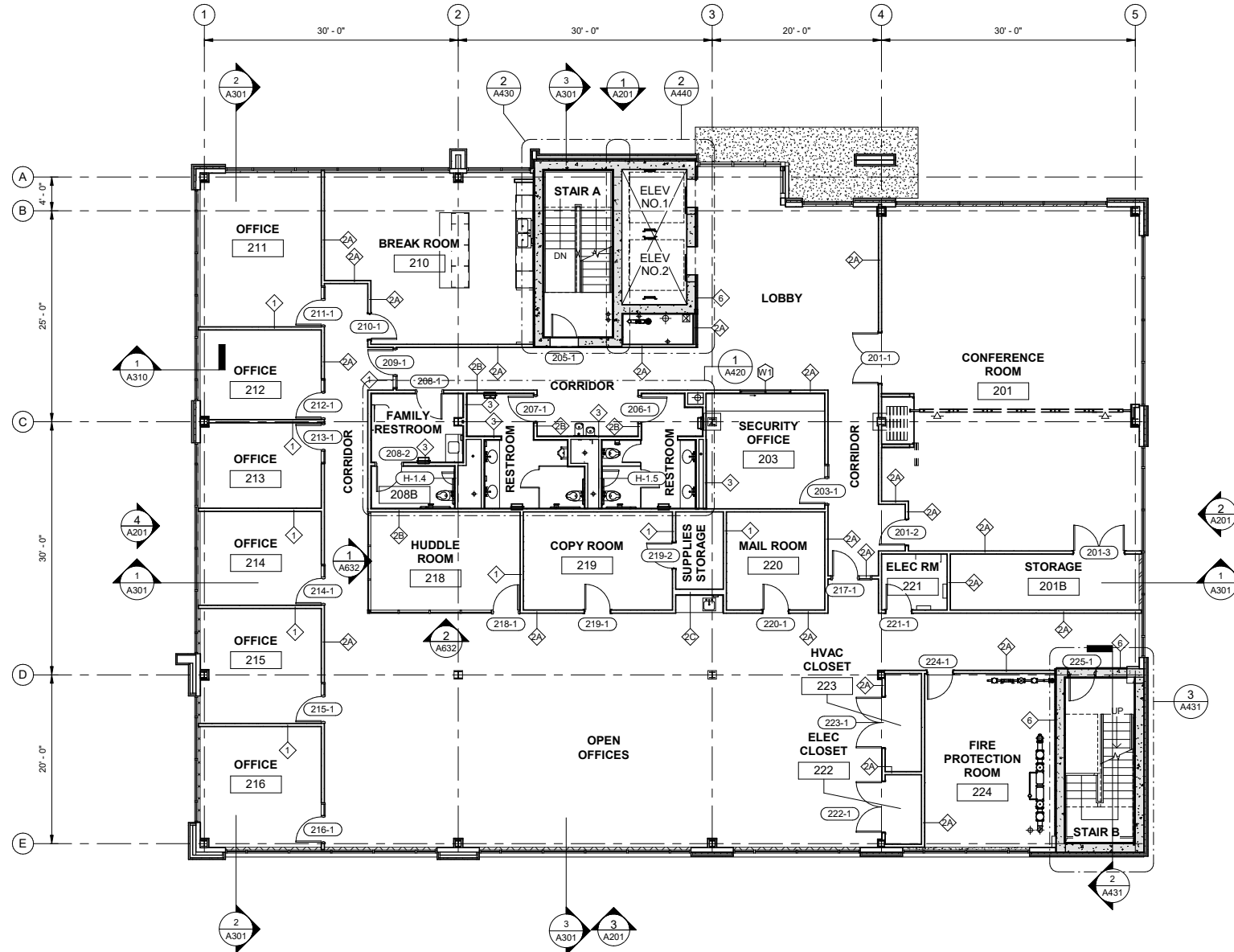
GROUND LEVEL PLAN AT EL 29.17
SCALE: 1/8" = 1'-0"

98% SUBMITTAL
SEPT 2022

9/16/2022 3:02:24 PM C:\Users\jschmidt\Documents\02188-16-AB_GH Arch_GH-john.schmidt.rvt

<p>GREELEY AND HANSEN 9020 STONY POINT PARKWAY, SUITE 275 RICHMOND, VIRGINIA 23235</p>	DESIGNED JJS	APPROVED	<table border="1" style="width: 100%; border-collapse: collapse;"> <thead> <tr> <th>NO.</th> <th>DATE</th> <th>APPD</th> <th>DESCRIPTION</th> </tr> </thead> <tbody> <tr><td> </td><td> </td><td> </td><td> </td></tr> <tr><td> </td><td> </td><td> </td><td> </td></tr> <tr><td> </td><td> </td><td> </td><td> </td></tr> </tbody> </table>	NO.	DATE	APPD	DESCRIPTION													<p>SCALE</p>	CITY OF RICHMOND VIRGINIA DEPARTMENT OF PUBLIC UTILITIES		ADMINISTRATION BUILDING ARCHITECTURAL	PROJECT NO.: 02188-16
	NO.	DATE		APPD	DESCRIPTION																			
DRAWN JJS						GROUND FLOOR PLAN AT EL 29.17	DWG A101																	
CHECKED SHS							SHEET -- OF 32	DATE DEC 2022 REV 0																

9/16/2022 3:02:28 PM | A:\PROJECTS\102188-16-AB_GH_Arch_gh-john.schmidt.rvt



SECOND FLOOR PLAN AT EL 41.17

SCALE: 1/8" = 1'-0"

C:\Users\jlschmidt\Documents\102188-16-AB_GH_Arch_gh-john.schmidt.rvt

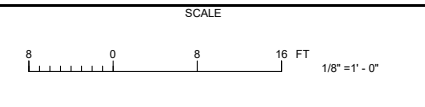
98% SUBMITTAL
SEPT 2022

GREELEY AND HANSEN
9020 STONY POINT PARKWAY, SUITE 275
RICHMOND, VIRGINIA 23235

DESIGNED JJS
DRAWN JJS
CHECKED SHS

NO.	DATE	APPD	DESCRIPTION

NO.	DATE	APPD	DESCRIPTION



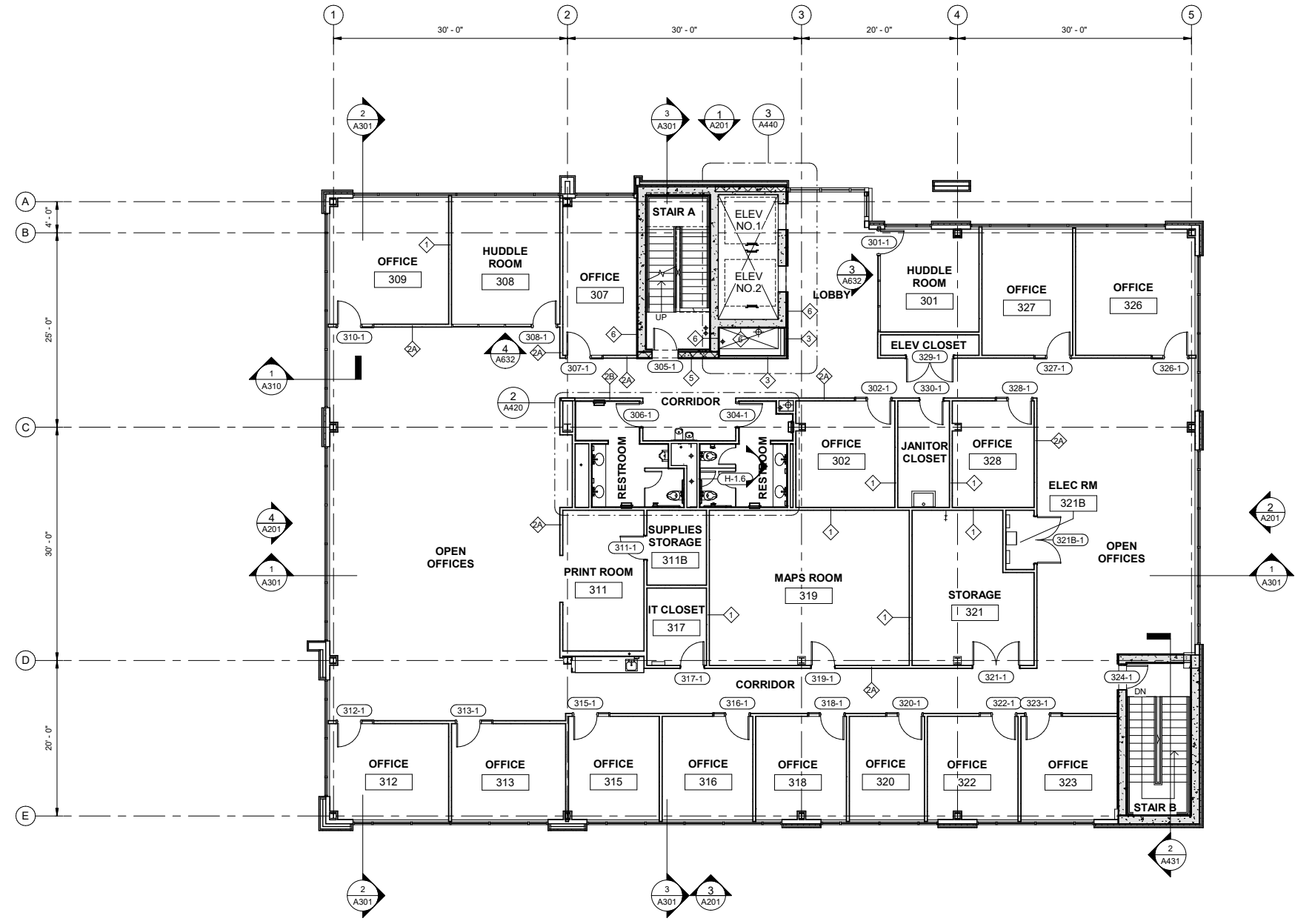
CITY OF RICHMOND VIRGINIA
DEPARTMENT OF PUBLIC UTILITIES
WWTP ADMINISTRATION BUILDING



ADMINISTRATION BUILDING
ARCHITECTURAL
SECOND FLOOR PLAN AT EL 41.17

PROJECT NO.	02188.16
DWG	A102
SHEET	OF 32
DATE	DEC 2022
REV	0

9/16/2022 3:02:32 PM L:\AS\MEASURE 11 CONTROLLER.DWG



THIRD FLOOR PLAN AT EL 51.17

SCALE: 1/8" = 1'-0"

C:\Users\jschmidt\Documents\02188-16-AB_GH Arch_gh-john.schmidt.rvt

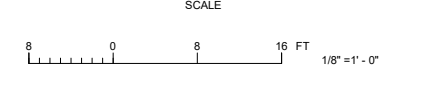
98% SUBMITTAL
SEPT 2022

GREELEY AND HANSEN
9020 STONY POINT PARKWAY, SUITE 275
RICHMOND, VIRGINIA 23235

DESIGNED JJS
DRAWN JJS
CHECKED SHS

NO.	DATE	APPD	DESCRIPTION

NO.	DATE	APPD	DESCRIPTION



CITY OF RICHMOND VIRGINIA
DEPARTMENT OF PUBLIC UTILITIES
WWTP ADMINISTRATION BUILDING

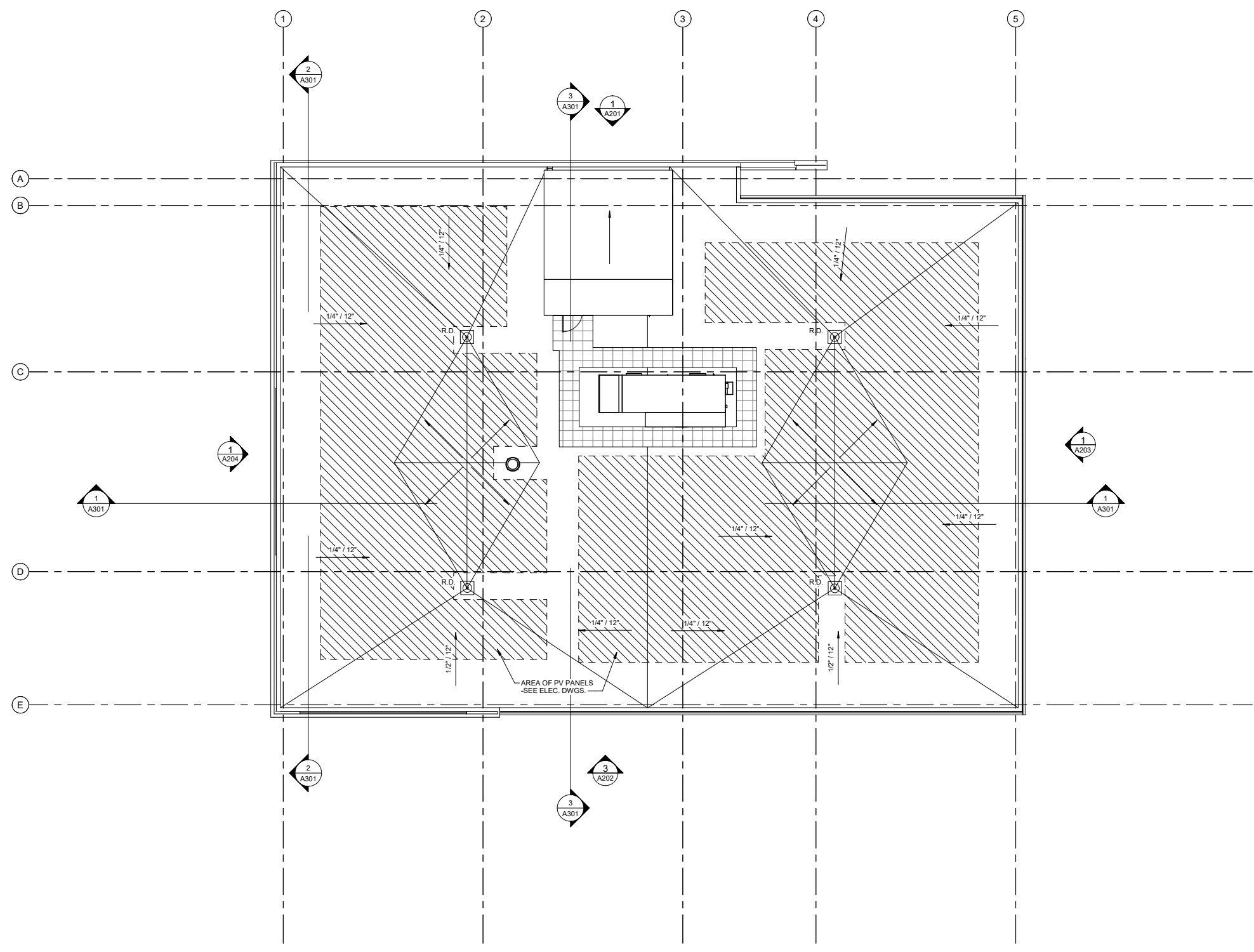


ADMINISTRATION BUILDING
ARCHITECTURAL
THIRD FLOOR PLAN AT EL 55.17

PROJECT NO.:	02188.16
DWG	A103
SHEET	OF 32
DATE	DEC 2022
REV	0

9/16/2022 4:57:00 PM

C:\Users\andid\Documents\102188.DD-AB_Architecture_awilliams\SEM2.rvt



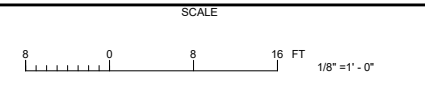
1 ROOF PLAN
SCALE: 1/8" = 1'-0"

nbj ARCHITECTURE
A Professional Limited Company
GROVE PARK SQUARE
11537-B NUCKOLS ROAD
Glen Allen, VA 23059
P: 804-273-9811 F: 804-273-9843

GREELEY AND HANSEN
9020 STONY POINT PARKWAY, SUITE 275
RICHMOND, VIRGINIA 23235

DESIGNED	SFC	APPROVED	
DRAWN	AW		
CHECKED	SFC		

NO.	DATE	APPD.	DESCRIPTION



CITY OF RICHMOND VIRGINIA
DEPARTMENT OF PUBLIC UTILITIES
WWTP ADMINISTRATION BUILDING



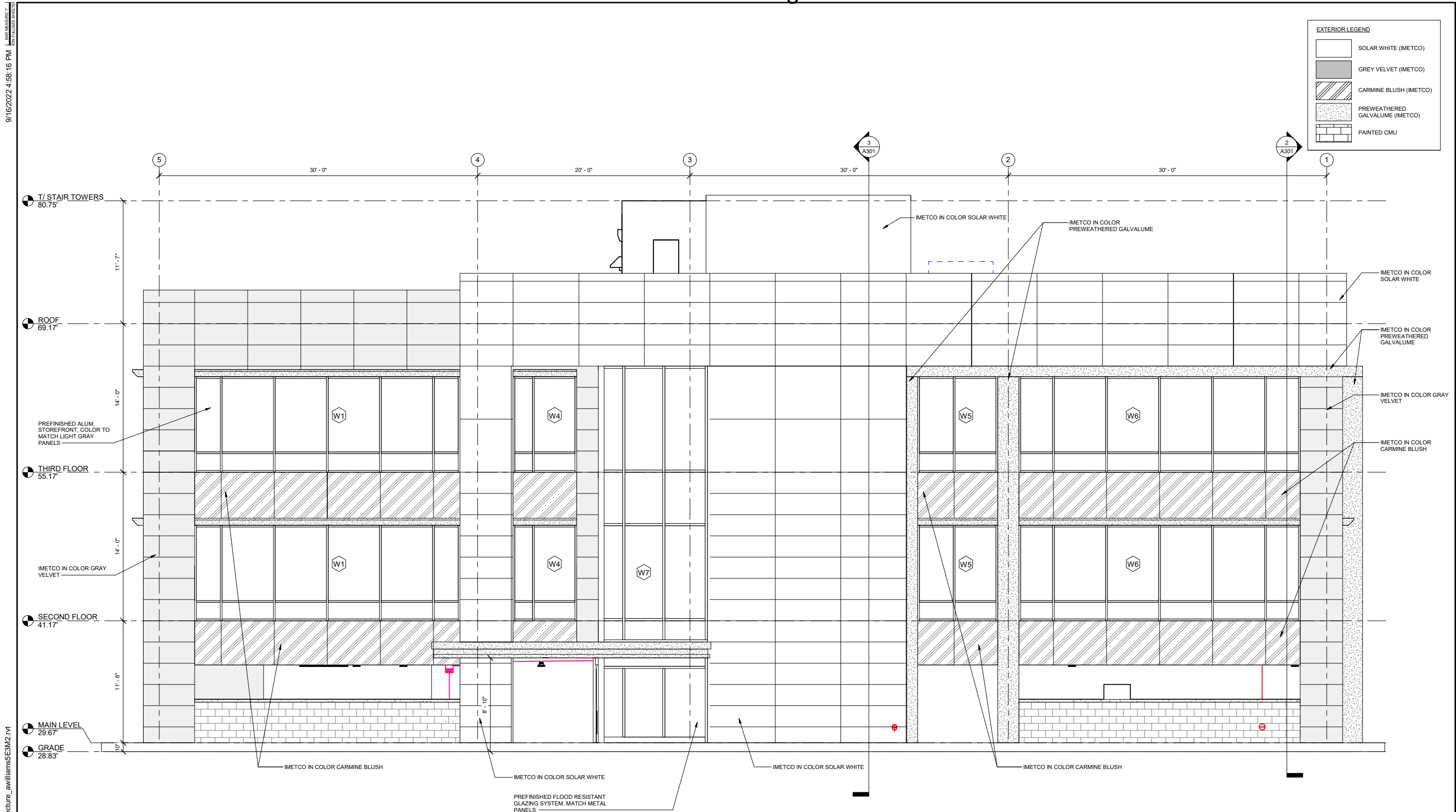
ADMINISTRATION BUILDING
ARCHITECTURAL
ROOF PLAN

98% SUBMITTAL
SEPT 2022

PROJECT NO.:	0218B.16
DWG	A104
SHEET	OF xx
DATE	NOV. 2022
REV	0

Attachment C: Building Elevations

9/16/2022 4:58:16 PM I:\BIM\MEASUREMENTS\CONTRACTOR\92188.DWG



EXTERIOR LEGEND	
	SOLAR WHITE (IMETCO)
	GREY VELVET (IMETCO)
	CARMINE BLUSH (IMETCO)
	PREWEATHERED GALVALUME (IMETCO)
	PAINTED CMU

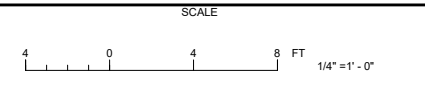
1 NORTH BUILDING ELEVATION
SCALE: 1/4" = 1'-0"

nbg ARCHITECTURE
A Professional Limited Company
GROVE PARK SQUARE
11537-B NUCKOLS ROAD
Glen Allen, VA 23059
P: 804-273-9811 F: 804-273-9843

GREELEY AND HANSEN
9020 STONY POINT PARKWAY, SUITE 275
RICHMOND, VIRGINIA 23235

DESIGNED	COD	APPROVED
DRAWN	AW	
CHECKED	SFC	

NO.	DATE	APPD.	DESCRIPTION



CITY OF RICHMOND VIRGINIA
DEPARTMENT OF PUBLIC UTILITIES
WWTP ADMINISTRATION BUILDING



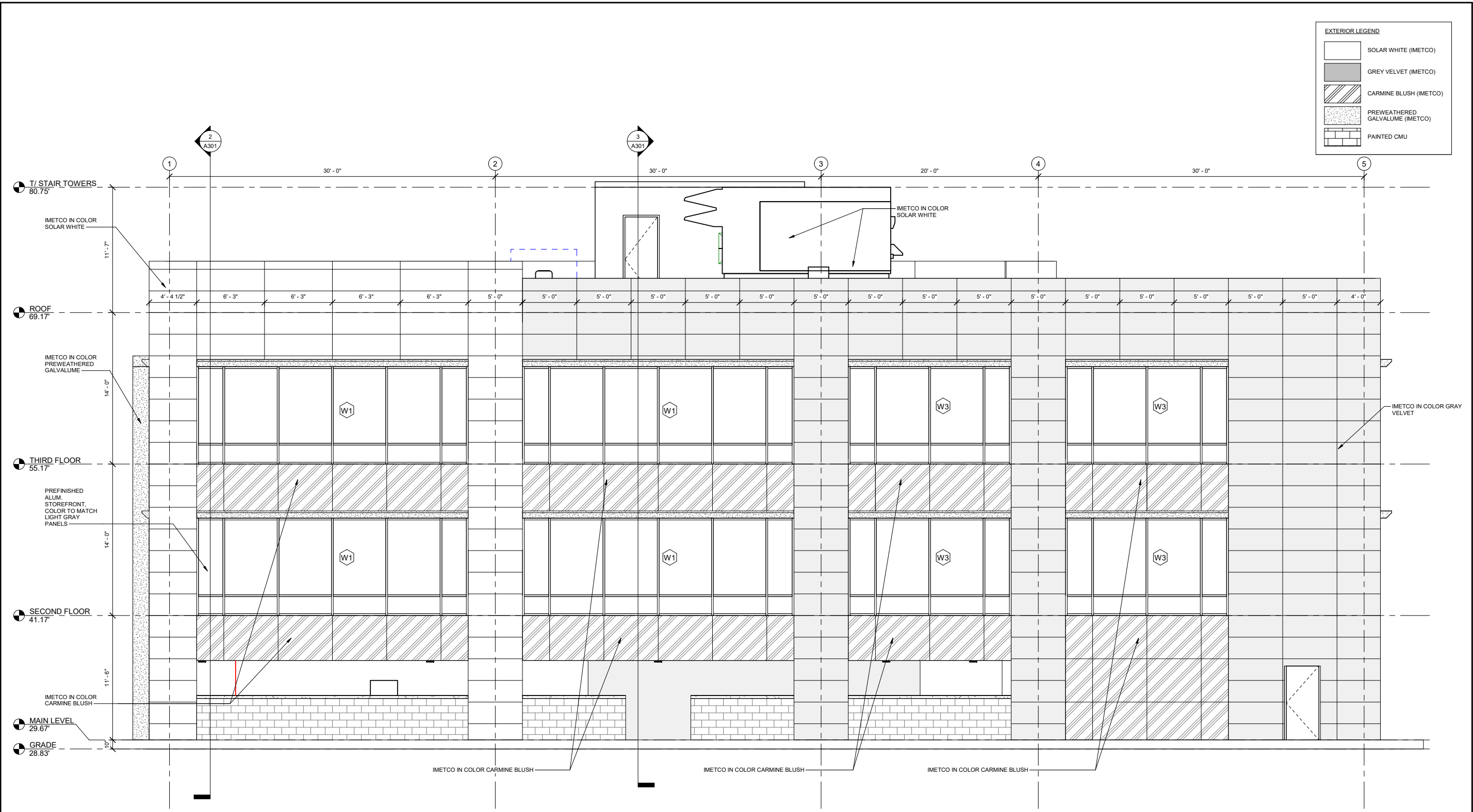
PROJECT NO.: 02188.16
DWG: **A201**
SHEET: OF xx
DATE: NOV, 2022 REV: 0

98% SUBMITTAL
SEPT 2022

BUILDING ELEVATION

9/16/2022 4:58:25 PM

C:\Users\andi\Documents\02188.D0-AB_Architecture_awilliams5E3M2.rvt



EXTERIOR LEGEND

[White Box]	SOLAR WHITE (IMETCO)
[Grey Box]	GREY VELVET (IMETCO)
[Hatched Box]	CARMINE BLUSH (IMETCO)
[Dotted Box]	PREWEATHERED GALVALUME (IMETCO)
[Brick Box]	PAINTED CMU

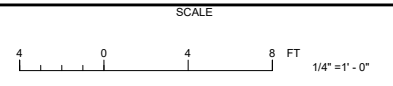
3 SOUTH BUILDING ELEVATION
SCALE: 1/4" = 1'-0"

nbi ARCHITECTURE
A Professional Limited Company
GROVE PARK SQUARE
11537-B NUCKOLS ROAD
Glen Allen, VA 23059
P: 804-273-9811 F: 804-273-9843

GREELEY AND HANSEN
9020 STONY POINT PARKWAY, SUITE 275
RICHMOND, VIRGINIA 23235

DESIGNED	COD	APPROVED	
DRAWN	AW		
CHECKED	SFC		

NO.	DATE	APPD.	DESCRIPTION



CITY OF RICHMOND VIRGINIA
DEPARTMENT OF PUBLIC UTILITIES
WWTP ADMINISTRATION BUILDING



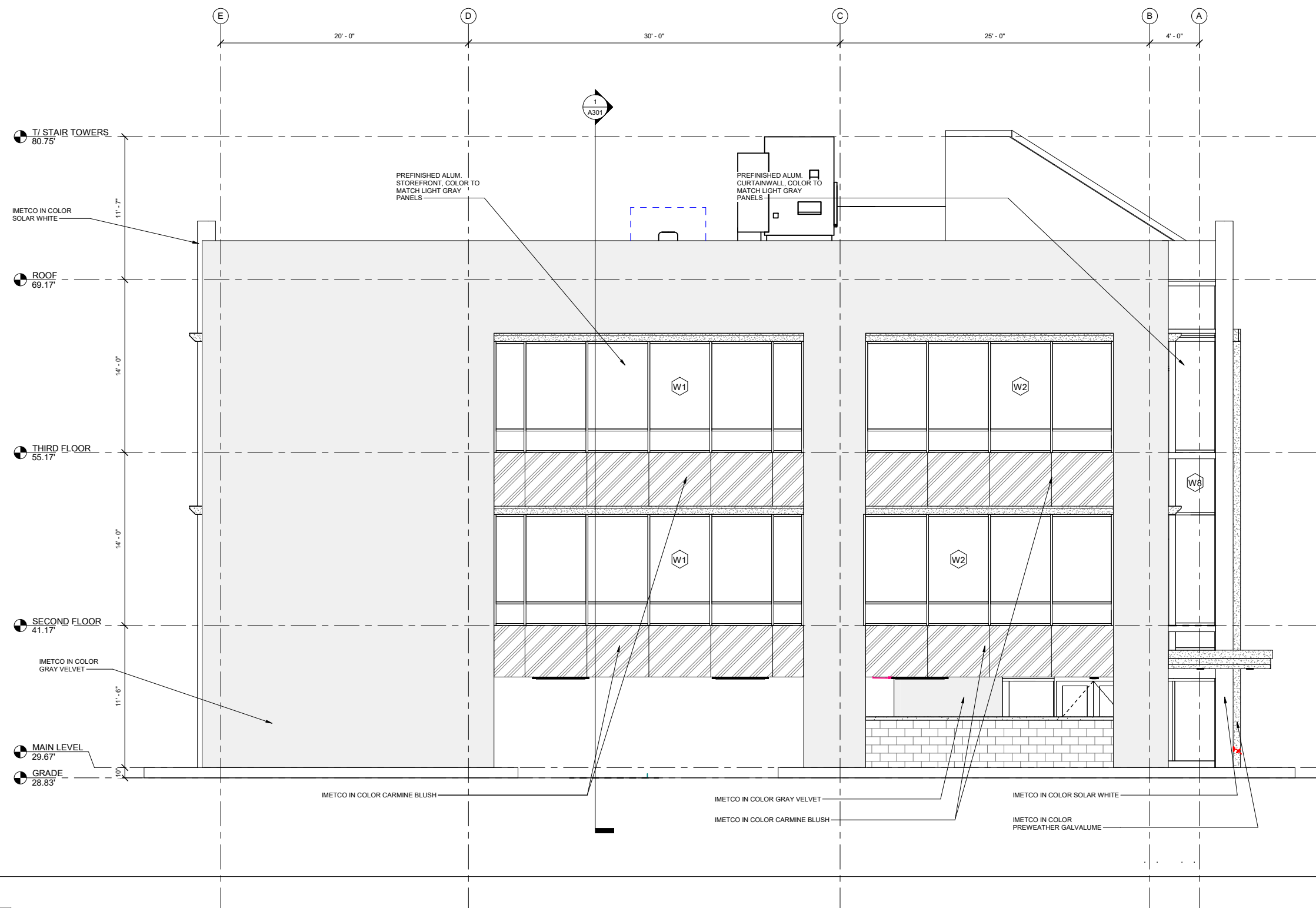
ADMINISTRATION BUILDING
ARCHITECTURAL
BUILDING ELEVATION

98% SUBMITTAL
SEPT 2022

PROJECT NO.:	02188.16
DWG	A202
SHEET	-- OF -- xx
DATE	NOV, 2022
REV	0

9/16/2022 4:58:33 PM

C:\Users\Andri\Documents\02188.DC-AB_Architecture_avilliamsE3M2.rvt



EXTERIOR LEGEND	
	SOLAR WHITE (IMETCO)
	GREY VELVET (IMETCO)
	CARMINE BLUSH (IMETCO)
	PREWEATHERED GALVALUME (IMETCO)
	PAINTED CMU

nbj ARCHITECTURE
 A Professional Limited Company
 GROVE PARK SQUARE
 11537-B NUCKOLS ROAD
 Glen Allen, VA 23059
 P: 804-273-9811 F: 804-273-9843

GREELEY AND HANSEN
 9020 STONY POINT PARKWAY, SUITE 275
 RICHMOND, VIRGINIA 23235

DESIGNED	COD	APPROVED
DRAWN	AW	
CHECKED	SFC	

NO.	DATE	APPD	DESCRIPTION



CITY OF RICHMOND VIRGINIA
 DEPARTMENT OF PUBLIC UTILITIES

WWTP ADMINISTRATION BUILDING

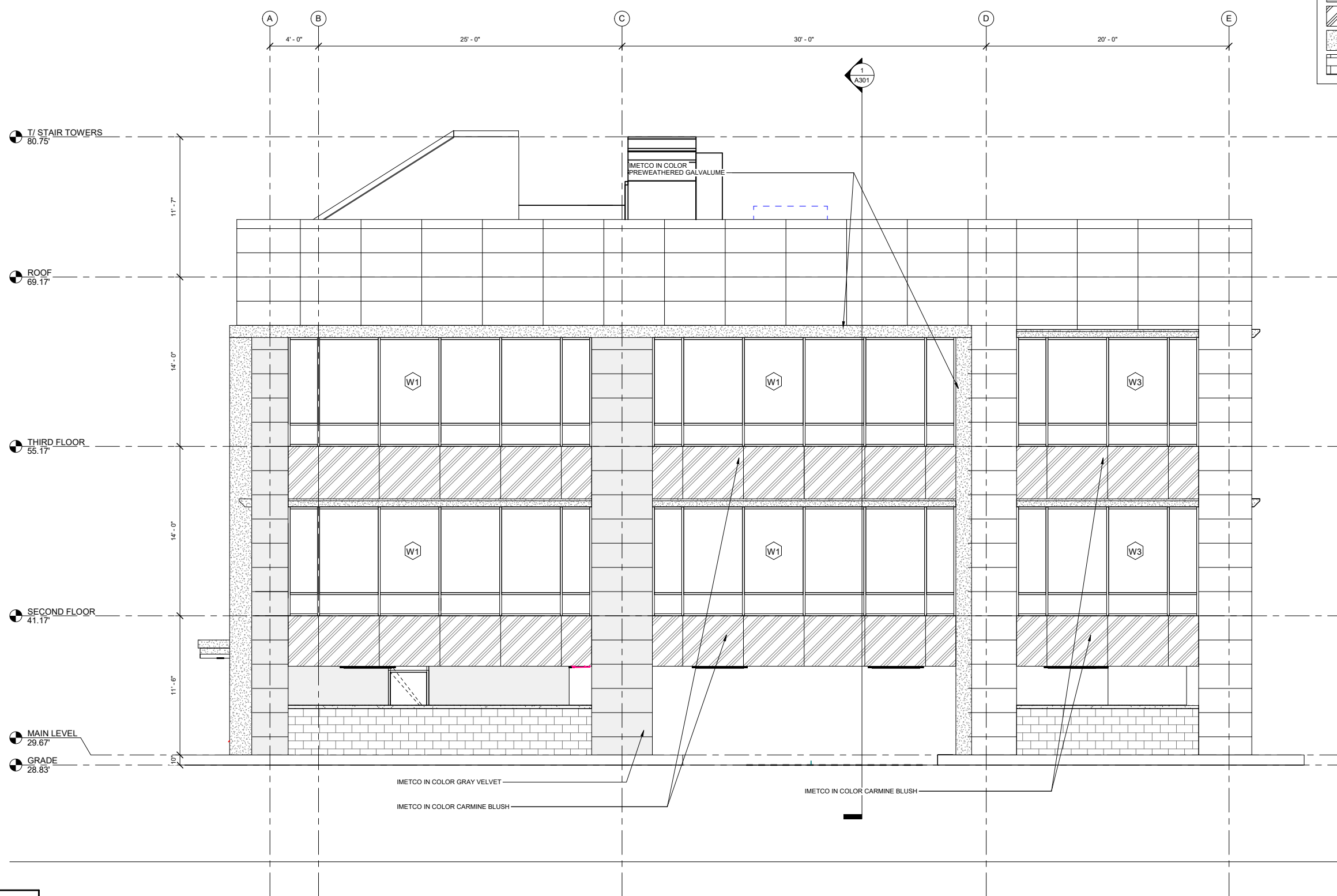
BUILDING ELEVATION

98% SUBMITTAL
 SEPT 2022

PROJECT NO.:	02188.16
DWG	A203
SHEET	OF xx
DATE	NOV, 2022
REV	0

9/16/2022 4:58:44 PM

C:\Users\Andri\Documents\02188.DC-AB_Architecture_avilliamsE3M2.rvt



EXTERIOR LEGEND

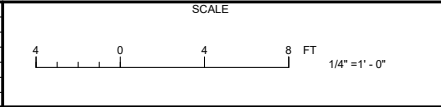
	SOLAR WHITE (IMETCO)
	GREY VELVET (IMETCO)
	CARMINE BLUSH (IMETCO)
	PREWEATHERED GALVALUME (IMETCO)
	PAINTED CMU

nbj ARCHITECTURE
 A Professional Limited Company
 GROVE PARK SQUARE
 11537-B NUCKOLS ROAD
 Glen Allen, VA 23059
 P: 804-273-9811 F: 804-273-9843

GREELEY AND HANSEN
 9020 STONY POINT PARKWAY, SUITE 275
 RICHMOND, VIRGINIA 23235

DESIGNED	COD	APPROVED
DRAWN	AW	
CHECKED	SFC	

NO.	DATE	APPD	DESCRIPTION



CITY OF RICHMOND VIRGINIA
 DEPARTMENT OF PUBLIC UTILITIES
 WWTP ADMINISTRATION BUILDING



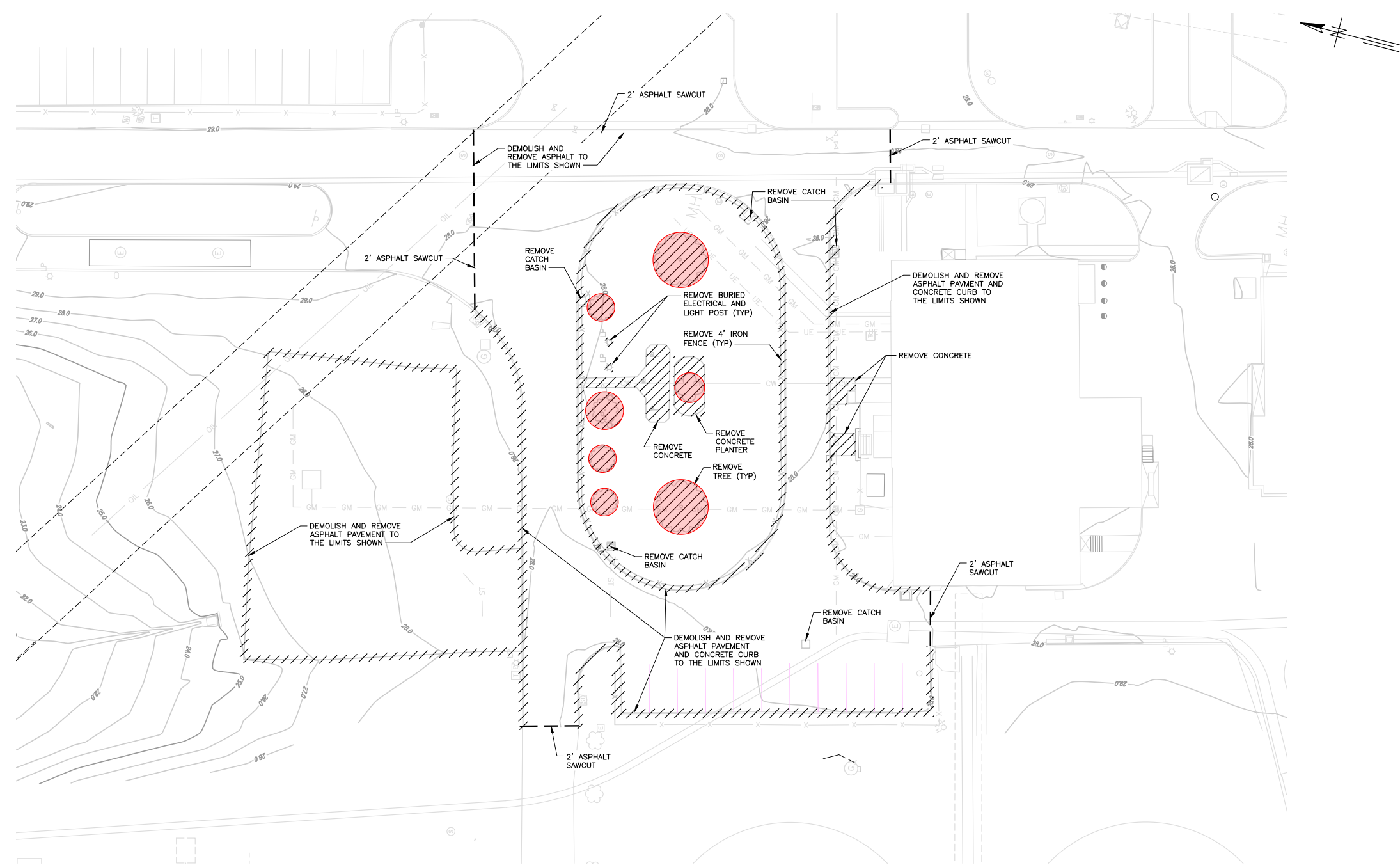
98% SUBMITTAL
 SEPT 2022

BUILDING ELEVATION

PROJECT NO.:	02188.16
DWG	A204
SHEET	OF xx
DATE	NOV, 2022
REV	0

Attachment D: Landscaping Plan

S:\0218 - RICHMOND\0218B - 16 - RICHMOND ADMIN BUILDING FINAL DESIGN\04-DESIGN\CIVIL\3DC\0218B00 - C105 Y.AHR. RONALD
 2022/09/20 1:05 PM



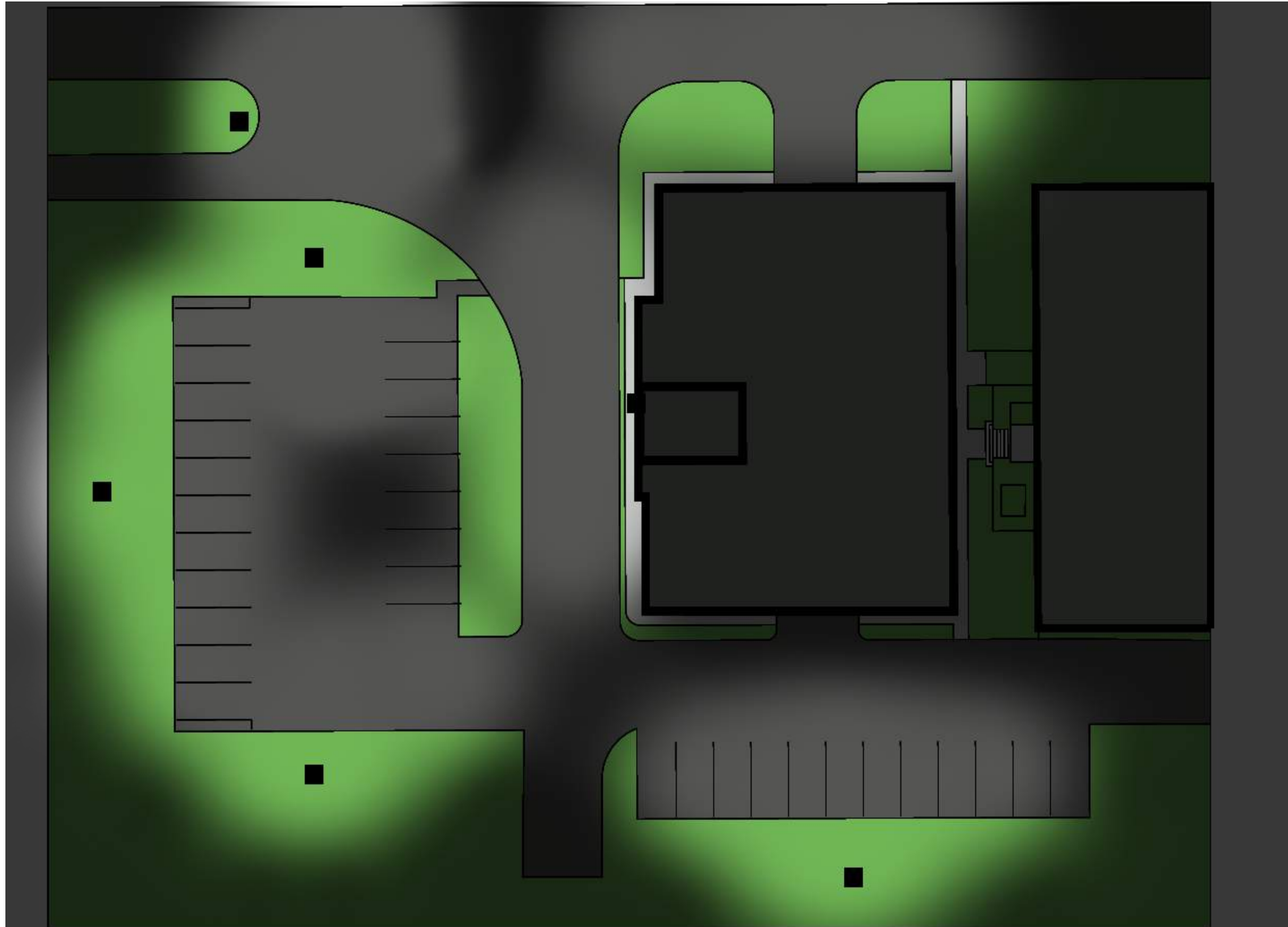
EXISTING TREES TO BE REMOVED

DEMOLITION SITE PLAN
 SCALE: 1" = 20'

PROGRESS SET
 09-20-22

GREELEY AND HANSEN 9020 STONY POINT PARKWAY, SUITE 275 RICHMOND, VIRGINIA 23235	DESIGNED AS	APPROVED	<table border="1" style="width: 100%; border-collapse: collapse;"> <thead> <tr> <th>NO.</th> <th>DATE</th> <th>APPD</th> <th>DESCRIPTION</th> </tr> </thead> <tbody> <tr><td> </td><td> </td><td> </td><td> </td></tr> <tr><td> </td><td> </td><td> </td><td> </td></tr> <tr><td> </td><td> </td><td> </td><td> </td></tr> </tbody> </table>	NO.	DATE	APPD	DESCRIPTION													SCALE 20 0 20 40 FT 1"=20'	CITY OF RICHMOND, VIRGINIA DEPARTMENT OF PUBLIC UTILITIES WWTP ADMINISTRATION BUILDING	 CIVIL	PROJECT NO.: 0218B.16 DWG C105 SHEET OF ### DATE NOVEMBER 2022 REV
	NO.	DATE		APPD	DESCRIPTION																		
DRAWN CS				EXISTING SITE AND DEMOLITION PLAN																			
CHECKED AS																							

Attachment E: Site Lighting Plan and Specification





ASSEMBLY SUBMITTAL SPEC SHEET

JOB NAME: WWTP Admin Building Parking Lot Exterior
JOB LOCATION: Richmond VA
QUOTE NUMBER: 22-13366
SUBMITTAL TYPE: Submittal

CONTENTS

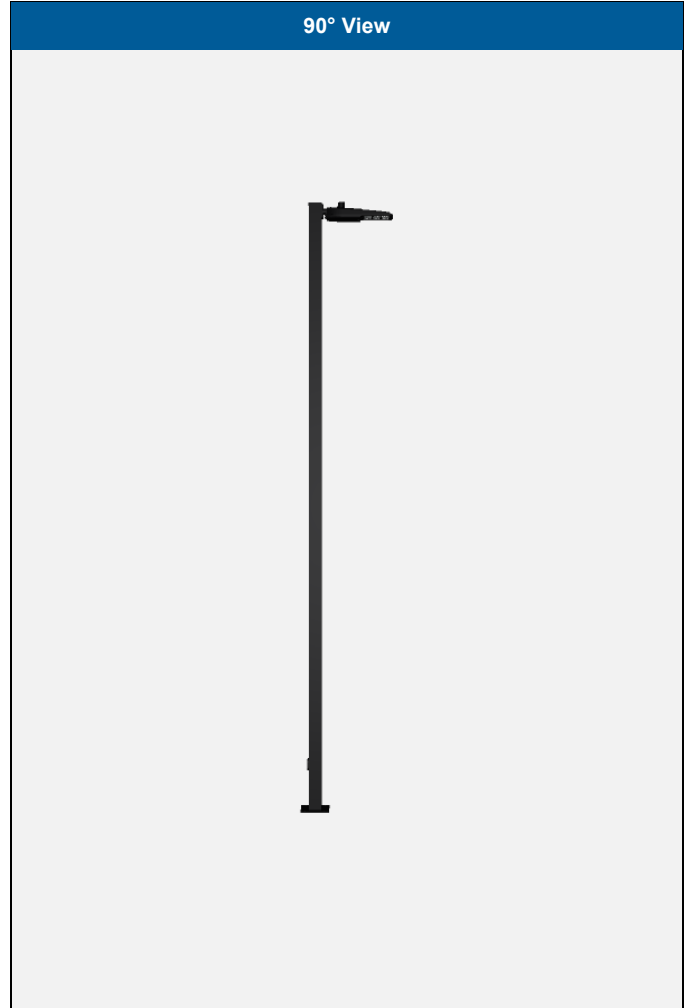
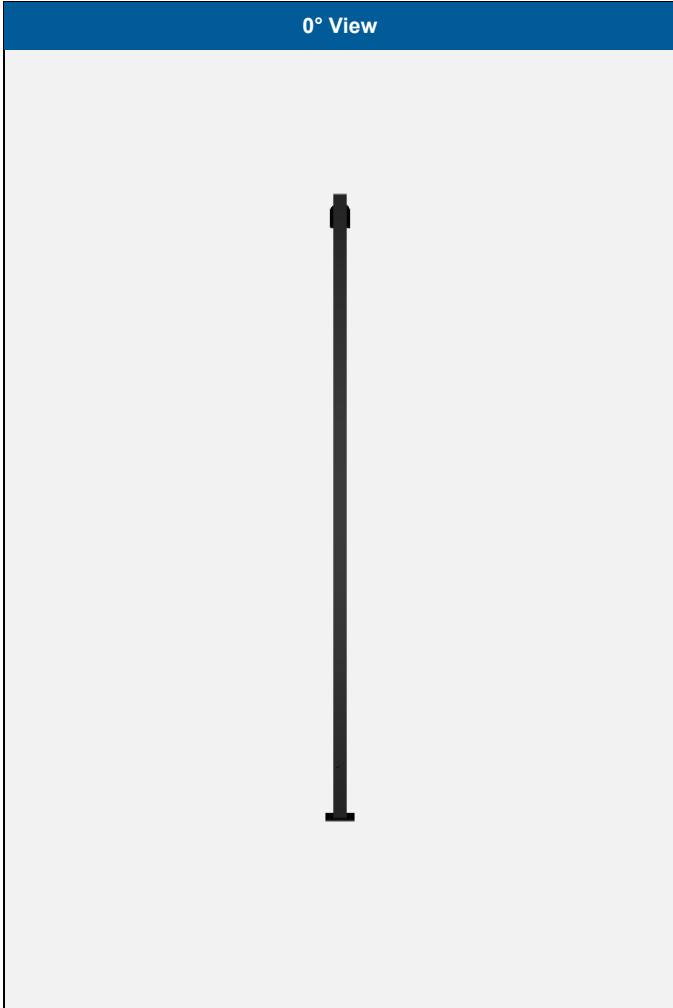
Type	Description
K	ATB0 P205 MVOLT R3 BK UMRBK PCSS SSA 20 55G D01 W5 BK ABG HZ 06IN 1A BOW SQA BK ASSY15746

NOTES



Job Name:	Job Location:	Quote No:	Type:
WWTP Admin Building Parking Lot Exterior	Richmond VA	22-13366	K

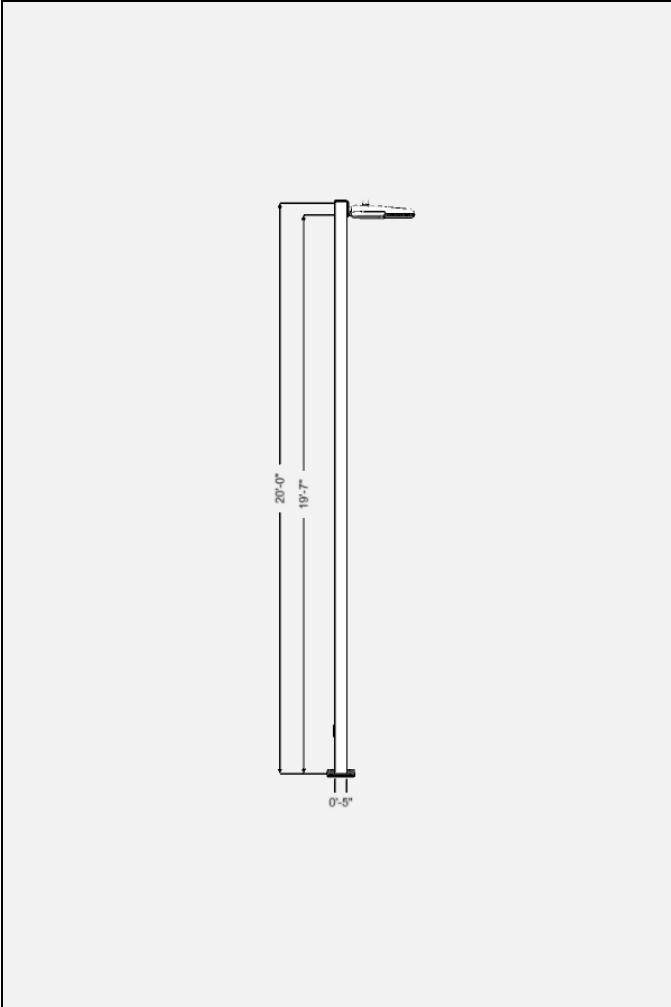
Catalog Number:
ATB0 P205 MVOLT R3 (4K) BK (20) (TB) UMRBK (P3) PCSS SSA 20 55G D01 W5 BK ABG HZ 06IN 1A BOW SQA BK ASSY15746



Ordering Information

Luminaire	Arm/Mounting Bracket	Pole
<p>Catalog Number: ATB0 P205 MVOLT R3 (4K) BK (20) (TB) UMRBK (P3) PCSS</p> <p>Series: (ATB0) Autobahn Cobra Head</p> <p>Performance Package: (P205) Performance package</p> <p>Voltage: (MVOLT) 120-277V</p> <p>Distribution: (R3) Roadway Type III</p> <p>Color Temperature: ((4K)) 4000K (standard)</p> <p>Finish: (BK) Black</p> <p>Surge Protection: ((20)) 20kV/10KA SPD (standard)</p>	<p>Catalog Number: HZ 06IN 1A BOW SQA BK</p> <p>Series: (HZ) Horizontal arm</p> <p>Height / Length: (06IN) 6IN</p> <p>Number of Arms: (1A) Single arm</p> <p>Arm Connection: (BOW) 2 Hole Drill Pattern "W" for SSA and SSS Poles</p> <p>Shaft Style: (SQA) SSA, square straight aluminum shaft</p> <p>Finish: (BK) Black</p>	<p>Catalog Number: SSA 20 55G D01 W5 BK ABG</p> <p>Series: (SSA) Square straight aluminum pole</p> <p>Pole Height: (20) 20FT</p> <p>Shaft Style: (55G) 5.0 Square x .188 Wall</p> <p>Pole Top Mounting: (D01) D1, drilling for 1 unit</p> <p>Pole Top Drill Pattern: (W5) Drill pattern</p> <p>Finish: (BK) Black</p> <p>Base Mounting: (ABG) Anchor bolt (galvanized steel)</p>
<p>Square straight aluminum pole</p> <p>Catalog Number: SSA 20 55G D01 W5 BK</p> <p>Series: (SSA) Square straight aluminum pole</p> <p>Pole Height: (20) 20FT</p> <p>Shaft Style: (55G) 5.0 Square x .188 Wall</p>	<p>Anchor Bolt</p> <p>Catalog Number: AB-26-4</p> <p>Anchor Bolt: (AB-26-4) AB-26-4</p>	<p>Anchor bolt template</p> <p>Catalog Number: TMP-45</p> <p>Anchor Bolt Template Number: (TMP-45) 45</p>

Assembly Drawing



Description	Height/Width
Assembly Overall Height	20'-0"
Luminaire Mounting Height	19'-7"
Pole Height	20'-0"
Pole Base Width	0'-5"

Ordering Information

Qty	Catalog Number
6	ATB0 P205 MVOLT R3 BK UMRBK PCSS
6	SSA 20 55G D01 W5 BK
6	AB-26-4
1	TMP-45
6	HZ 06IN 1A BOW SQA BK

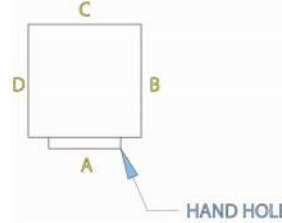
Windload

Passed Wind Speed: 90 mph

Windload Result: 5%

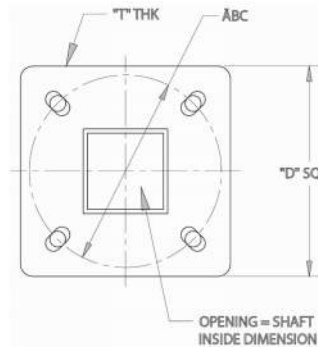
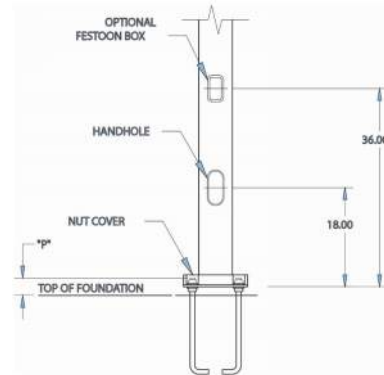
Evaluated per: Non-AASHTO

Dimensional Data



Pole Top Style	Description	Orientation
D01	Drilling for 1 Unit	C
D02	2 Units @ 180	B,D
D03	3 Units @ 90	B,C,D
D04	4 Units @ 90	A,B,C,D
D05	2 Units @ 90	B,C

Bolt Circle Dia.	Min Base Size 'D'	Base Thk 'T'	Bolt Projection
11	11.25	0.50	3.00 - 3.50



Customer Approval Signature:

Date:

Date:

Project:

Group/Type:

Qty:

Autobahn ATB0

Autobahn LED Cobra Head

Product Submittal Description:

Autobahn Cobra Head, Performance package, 120-277V, Roadway Type III, 4000K (standard), Black, 20kV/10KA SPD (standard), Terminal block (standard), UMR arm 1 1/4IN (1 5/8IN OD) x 8IN round pole, black, 3-pin photocontrol receptacle (standard), Solid state photocontrol



The product images shown are for illustration purposes only and may not be an exact representation of the product.

[↓ IES Files](#)

[↓ BIM Models](#)

[↓ Full Spec Sheet](#)

Product Webpage: www.acuitybrands.com/products/detail/122046

Warranty: www.acuitybrands.com/support/warranty/terms-and-conditions

Model #: ATB0 P205 MVOLT R3 (4K) BK (20) (TB) UMRBK (P3) PCSS ✓

Series*	Performance Package*	Solar
ATB0 Autobahn Cobra Head	P201 Performance package P202 Performance package P203 Performance package P204 Performance package P205 Performance package P301 Performance package P302 Performance package P303 Performance package P304 Performance package	SOLAR Only compatible with Sol by Sunna Design's Solar Lighting Solutions P305 Performance package P451 Performance package P452 Performance package P453 Performance package P454 Performance package P455 Performance package P456 Performance package P457 Performance package
Voltage*	Distribution*	Color Temperature*
347 347V 480 480V MVOLT 120-277V XVOLT 277V-480V	R2 Roadway Type II R3 Roadway Type III R4 Roadway Type IV R5 Roadway Type V	(4K) 4000K (standard) 27K 2700K 3K 3000K 5K 5000K
Surge Protection*	Terminal Block*	Bubble Level
(20) 20kV/10KA SPD (standard) MP 10kV/5kA MOV pack	(TB) Terminal block (standard) T2 Wired to L1 and L2 position	BL Bubble level
Finish*	Arm	
(GY) Gray (standard) BK Black BZ Bronze DDB Dark bronze GI Graphite GN Green WH White	UMRBK UMR arm 1 1/4IN (1 5/8IN OD) x 8IN round pole, black UMRBZ UMR arm 1 1/4IN (1 5/8IN OD) x 8IN round pole, bronze UMRDDB UMR arm 1 1/4IN (1 5/8IN OD) x 8IN round pole, dark bronze UMRGALV UMR arm 1 1/4IN (1 5/8IN OD) x 8IN round pole, galvanized	

Submittal Spec Sheet

Dynamically Generated
Series: ATB0

Date:
Project:
Group/Type:
Qty:

Arm (Cont...)				Listing			
UMRGI	UMR arm 1 1/4IN (1 5/8IN OD) x 8IN round pole, graphite	UMSBK	UMS arm 1 1/4IN (1 5/8IN OD) x 8IN square pole, black	UMSGI	UMS arm 1 1/4IN (1 5/8IN OD) x 8IN square pole, graphite	XL	No CSA Listing
UMRGN	UMR arm 1 1/4IN (1 5/8IN OD) x 8IN round pole, green	UMSBZ	UMS arm 1 1/4IN (1 5/8IN OD) x 8IN square pole, bronze	UMSGN	UMS arm 1 1/4IN (1 5/8IN OD) x 8IN square pole, green		
UMRGY	UMR arm 1 1/4IN (1 5/8IN OD) x 8IN round pole, gray	UMSDDB	UMS arm 1 1/4IN (1 5/8IN OD) x 8IN square pole, dark bronze	UMSGY	UMS arm 1 1/4IN (1 5/8IN OD) x 8IN square pole, gray		
UMRWH	UMR arm 1 1/4IN (1 5/8IN OD) x 8IN round pole, white	UMSGALV	UMS arm 1 1/4IN (1 5/8IN OD) x 8IN square pole, galvanized	UMSWH	UMS arm 1 1/4IN (1 5/8IN OD) x 8IN square pole, white		
Shield		Label		Photocontrol Receptacle*		Adjustable Output	
HSS	House side shield	NL	NEMA label	(P3)	3-pin photocontrol receptacle (standard)	AO	Field adjustable output
				NR	No photocontrol receptacle		
				P7	7-pin photocontrol receptacle		
Photocontrol		Point of Manufacture		Job Pack		Packaging	
PCLL	Long life photocontrol	BAA	Buy American Act	JP	Job pack	JP42	Job pack of 42
PCSS	Solid state photocontrol						
SH	Shorting cap						

This is a dynamic specification sheet that is based on certain selections made by the user. All results generated are for informational purposes only. The user should validate the results with its agency sales representative to determine whether the product has been configured correctly before ordering. Acuity Brands Lighting is not responsible for any loss resulting from product configuration errors.

Not all versions of the product are available with all options.

Specifications subject to change without notice.

Actual performance may differ as a result of end-user environment and application.

All values are design or typical values, measured under laboratory conditions at 25 °C.

See the full specification sheet at the product page link above for full product information and detailed ordering information.

Certain airborne contaminants can diminish the integrity of acrylic and/or polycarbonate.

Visit: <http://www.acuitybrandslighting.com/library/ll/documents/specsheets/acrylic-polycarbonate-compatibility.pdf> for Acrylic-Polycarbonate Compatibility table for suitable uses.

All trademarks referenced are property of their respective owners.



Submittal Spec Sheet

Dynamically Generated

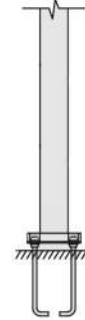
Series: SSA

SSA HLP Pole

Square Straight Aluminum Pole

Product Submittal Description:

Square straight aluminum pole, 20FT, 5.0 Square x .188 Wall, D1, drilling for 1 unit, Drill pattern, Black, Anchor bolt (galvanized steel)



The product images shown are for illustration purposes only and may not be an exact representation of the product.

[↓ IES Files](#)

[↓ BIM Models](#)

[↓ Full Spec Sheet](#)

Product Webpage: www.acuitybrands.com/products/detail/1314176

Warranty: www.acuitybrands.com/support/warranty/terms-and-conditions

Model #: SSA 20 55G D01 W5 BK ABG ✓

Series*		Luminaire Series for Lowering Device		Pole Height*			
SSA	Square straight aluminum pole	HMLED3LUM	HMLED 3 High Mast LED 3 wiring configuration	08	8FT	30	30FT
				10	10FT	32	32FT
				12	12FT	35	35FT
				14	14FT		
				15	15FT		
				16	16FT		
				18	18FT		
				20	20FT		
				25	25FT		
Shaft Style*		Pole Top Mounting*		Pole Top Drill Pattern*			
44C	4.0 Square x .125 Wall	B04	Tenon, 2.38 O.D. x 4IN tall	N03	Tenon, 1.5 NPT Pipe x 3IN LG.	K8	Drill pattern
44G	4.0 Square x .188 Wall	C04	Tenon, 2.88 O.D. x 4IN tall	N12	Tenon, 1.5 NPT Pipe x 12IN LG.	MG3	For MGLED, MGLEDM and LEDG2
55G	5.0 Square x .188 Wall	D01	D1, drilling for 1 unit			NDR	No drill pattern
66G	6.0 Square x .188 Wall	D02	D2, drilling For 2 units @ 180			PL2	Drill Pattern, 2 bolt, 2IN from top
66J	6.0 Square x .250 Wall	D03	D3, drilling For 3 units @ 90			R2	Drill pattern
		D04	D4, drilling For 4 units @ 90			R3	Drill pattern
		D05	D5, drilling For 2 units @ 90			W5	Drill pattern
		E06	Tenon, 3.50 O.D. x 6IN tall				
		F06	Tenon, 4.00 O.D. x 6IN tall				
Finish*		Base Mounting*		Festoon		Fasteners	
AK	Black anodized	ABG	Anchor bolt (galvanized steel)	FST	Festoon box	TRF	Tamper resistant fasteners
AZ	Bronze anodized	LAB	Less anchor bolt				
BK	Black						
BZ	Bronze						
GN	Green						
GR	Gray						
WH	White						





Submittal Spec Sheet

Dynamically Generated

Series: SSA

Dampener		Territory Compliance	
VDA	Vibration dampener	BAA	Buy American Act

This is a dynamic specification sheet that is based on certain selections made by the user. All results generated are for informational purposes only. The user should validate the results with its agency sales representative to determine whether the product has been configured correctly before ordering. Acuity Brands Lighting is not responsible for any loss resulting from product configuration errors.

Not all versions of the product are available with all options.

Specifications subject to change without notice.

Actual performance may differ as a result of end-user environment and application.

All values are design or typical values, measured under laboratory conditions at 25 °C.

See the full specification sheet at the product page link above for full product information and detailed ordering information.

Certain airborne contaminants can diminish the integrity of acrylic and/or polycarbonate.

Visit: <http://www.acuitybrandslighting.com/library/ll/documents/specsheets/acrylic-polycarbonate-compatibility.pdf> for Acrylic-Polycarbonate Compatibility table for suitable uses.

All trademarks referenced are property of their respective owners.





Submittal Spec Sheet

Dynamically Generated

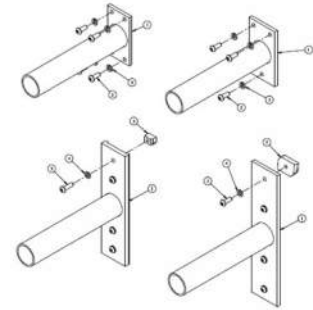
Series: HZ

Non-Decorative Roadway Arms

Non-Decorative

Product Submittal Description:

Horizontal arm, 6IN, Single arm, 2 Hole Drill Pattern "W" for SSA and SSS Poles, SSA, square straight aluminum shaft, Black



The product images shown are for illustration purposes only and may not be an exact representation of the product.

[↓ IES Files](#)

[↓ BIM Models](#)

[↓ Full Spec Sheet](#)

Warranty: www.acuitybrands.com/support/warranty/terms-and-conditions

Model #: **HZ 06IN 1A BOW SQA BK ✓**

Series*		Height / Length*				Number of Arms*	
HZ	Horizontal arm	06IN	6IN	24IN	24IN	1A	Single arm
		08IN	8IN	30IN	30IN	2A	2 at 180 degrees
		10IN	10IN	36IN	36IN		
		12IN	12IN	42IN	42IN		
		14IN	14IN	48IN	48IN		
		16IN	16IN				
		18IN	18IN				
		20IN	20IN				
		22IN	22IN				
		Arm Connection*				Shaft Style*	
BO	Bolt-on	C51	Clamp on Traffic Sign Frame, 5IN clamp	F4C	Shaft, 4IN diameter fluted, .125 wall	SL5	Shaft, Sitelink 5.25IN fluted, .25 wall (L5J)
BO2	4 hole drill pattern "MP2" for decorative poles	C52	Clamp on arm, for 5IN shaft, 2 at 180	F4J	Shaft, 4IN diameter fluted, .25 wall	SL6	Shaft, Sitelink 5.75IN fluted, .25 wall (L6J)
BOR	3 Hole Drill Pattern "R" for SSA and SSS Poles			F5J	Shaft, 5IN diameter fluted, .25 wall	SL8	Shaft, Sitelink 8.50IN fluted (L8G)
BOW	2 Hole Drill Pattern "W" for SSA and SSS Poles			S4C	Shaft, 4IN diameter smooth, .125 wall	SQA	SSA, square straight aluminum shaft
C41	Clamp on Traffic Sign Frame, 4IN clamp			S4J	Shaft, 4IN diameter smooth, .25 wall	SQT	SSS, square straight steel shaft
C42	Clamp on arm, for 4IN shaft, 2 @ 180			S5J	Shaft, 5IN diameter smooth, .25 wall	ST2	Shaft, Sitelink 5.75IN extruded (T2, T2J)
				SL4	Shaft, Sitelink 4.50IN fluted, .156 wall (L4E)		
Shaft Style* (Cont...)		Finish*					
ST3	Shaft, Sitelink 8.50IN extruded (T3, T3H)	BK	Black	SL	Silver		
		BZ	Bronze	WH	White		
		CMC	Customer matched color				
		CTBS	Standard color to be determined				
		DB	Dark blue				
		GH	Graphite				
		GN	Green				
		GR	Gray				
PP	Prime painted						

