

# Broad Rock Creek Park

Urban Design Committee - Conceptual Review

September 11, 2025



Project for:



DEPARTMENT OF  
**PARKS, RECREATION  
AND COMMUNITY  
FACILITIES**

Project by:



**TIMMONS GROUP**



# Table of Contents

<b>1</b>	<b>Existing Conditions</b>	<b>.....3</b>
<b>2</b>	<b>Community Engagement</b>	<b>.....8</b>
<b>3</b>	<b>Master Plan</b>	<b>.....11</b>
<b>4</b>	<b>Character Imagery</b>	<b>.....16</b>
<b>5</b>	<b>Project Schedule</b>	<b>.....21</b>

# **1 Existing Conditions**

**Site Context**

**Site Photos**

**Environmental Constraints**

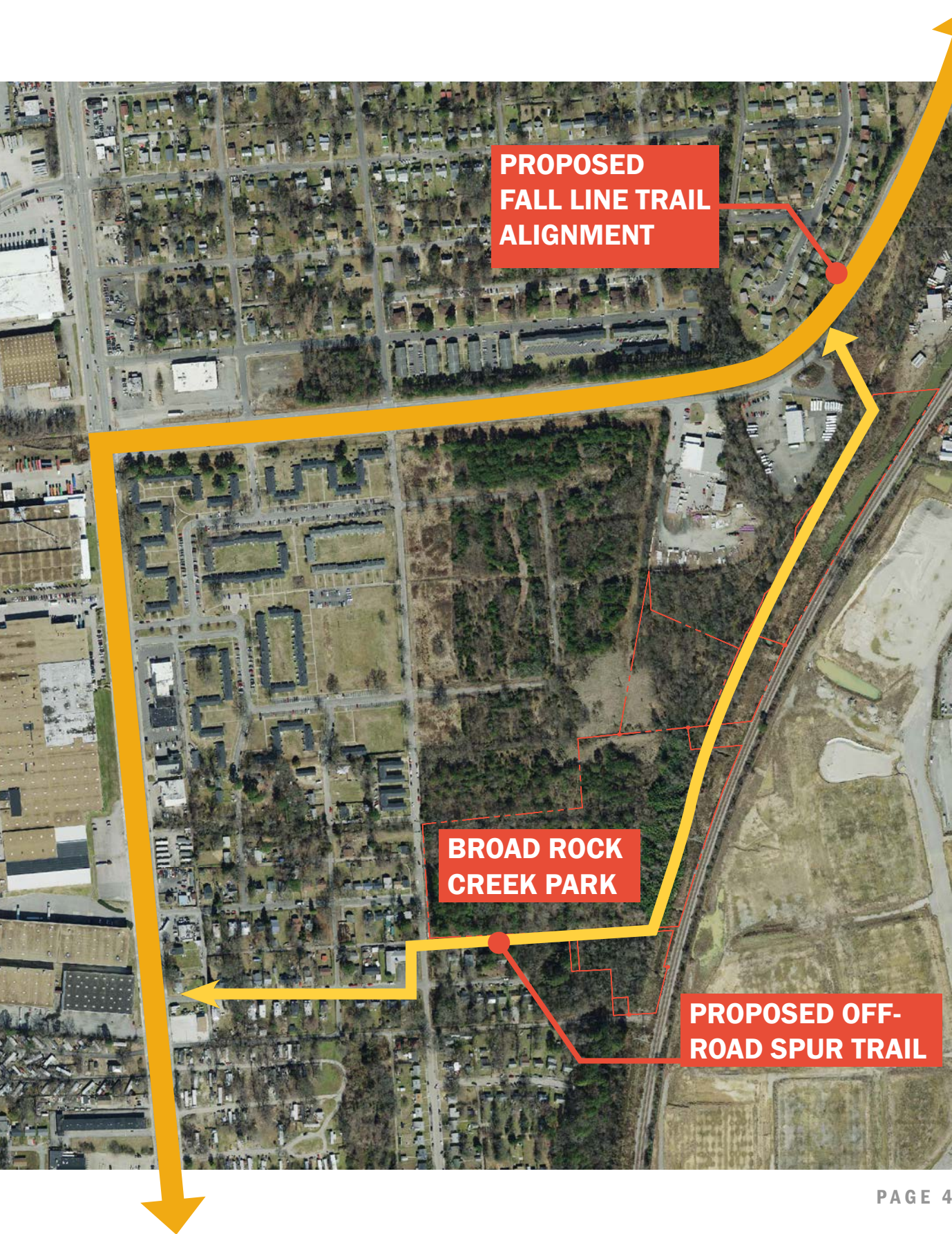
**Invasive Species Removal**



# Site Context: Fall Line Trail



Fall Line Trail alignment as proposed within the Fall Line Vision Plan, 2024. Graphic adapted with permission of Sports Backers.





# Site Photos





# Site Constraints

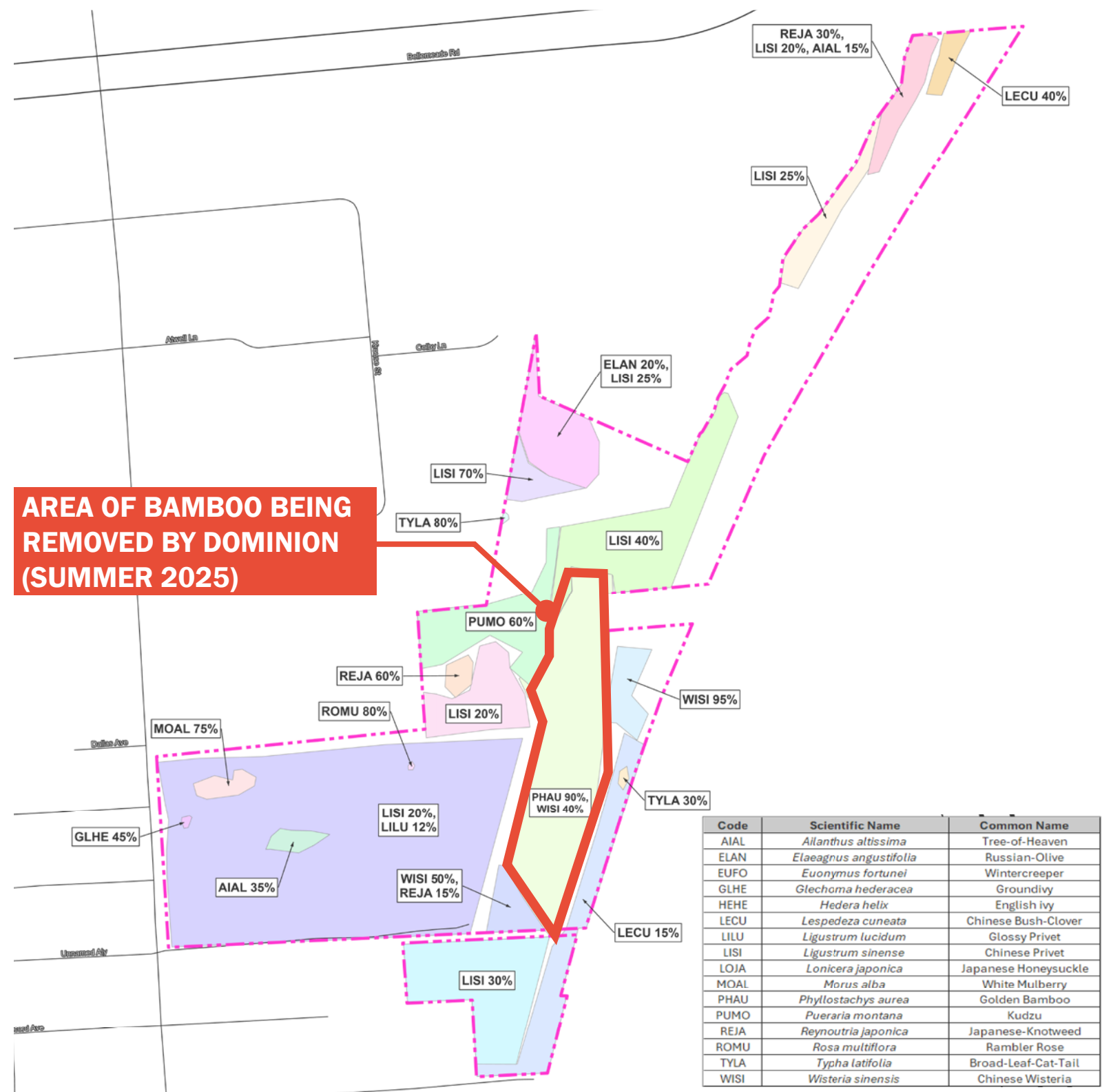
- Stream or Pond
- Wetland
- Resource Protection Area (RPA)





# Invasive Plant Species

- Invasive plant species are prevalent throughout the site and threaten areas of mature tree canopy
- Invasive plants of particular concern include golden bamboo, kudzu, and Chinese wisteria
- Dominion Power to remove and control 3 acres of bamboo in Summer 2025 to protect adjacent power line
- Invasive Plant Species Management Plan to be implemented by PRCF





## **2 Community Engagement**



# Community Engagement

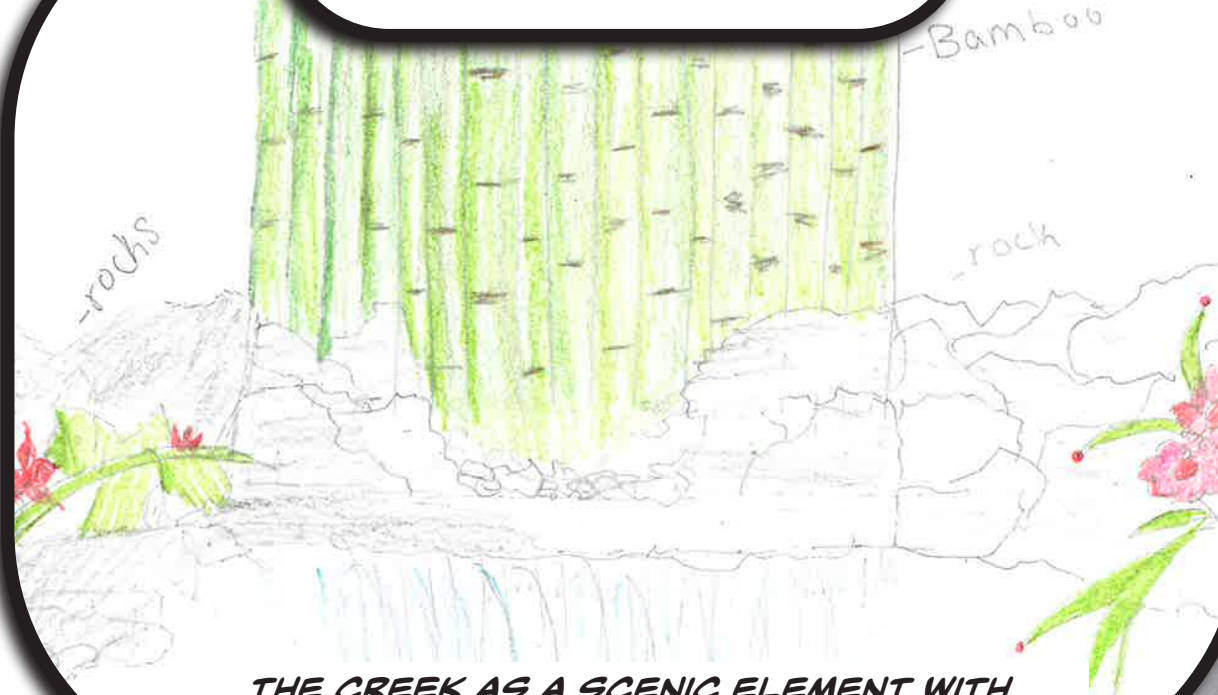
- Extensive community engagement process with Virginia Community Voice starting in 2022
- 4 years of Art, Reconciliation, and Civic Advocacy (ARCA) youth programing on site
- Design charette held with ARCA participants March 2025
- Common themes depicted in drawings:
  - the desire to highlight and incorporate existing public art pieces and themes into the future park
  - viewing and interacting with the natural world
  - adventurous play features
  - safety improvements



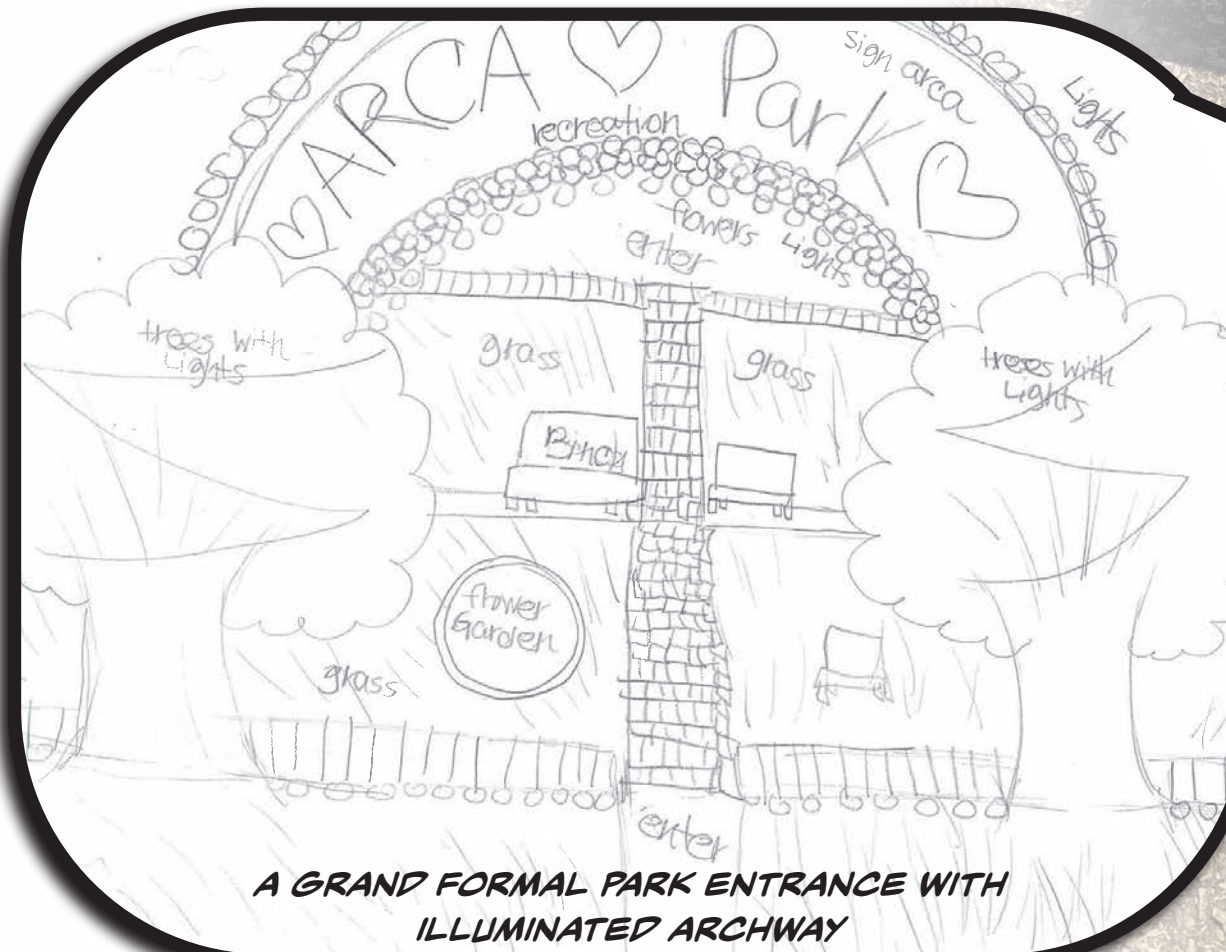
**ART, FISHING, AND WILDLIFE VIEWING**

BROAD ROCK CREEK PARK  
TIMMONS GROUP | AUGUST 14, 2025

WHAT YOU WANT TO  
BUILD IN THE PARK?  
¿QUÉ QUIERES CONSTRUIR EN EL  
PARQUE?



**THE CREEK AS A SCENIC ELEMENT WITH  
WILDFLOWERS AND WATERFALLS**



**A GRAND FORMAL PARK ENTRANCE WITH  
ILLUMINATED ARCHWAY**

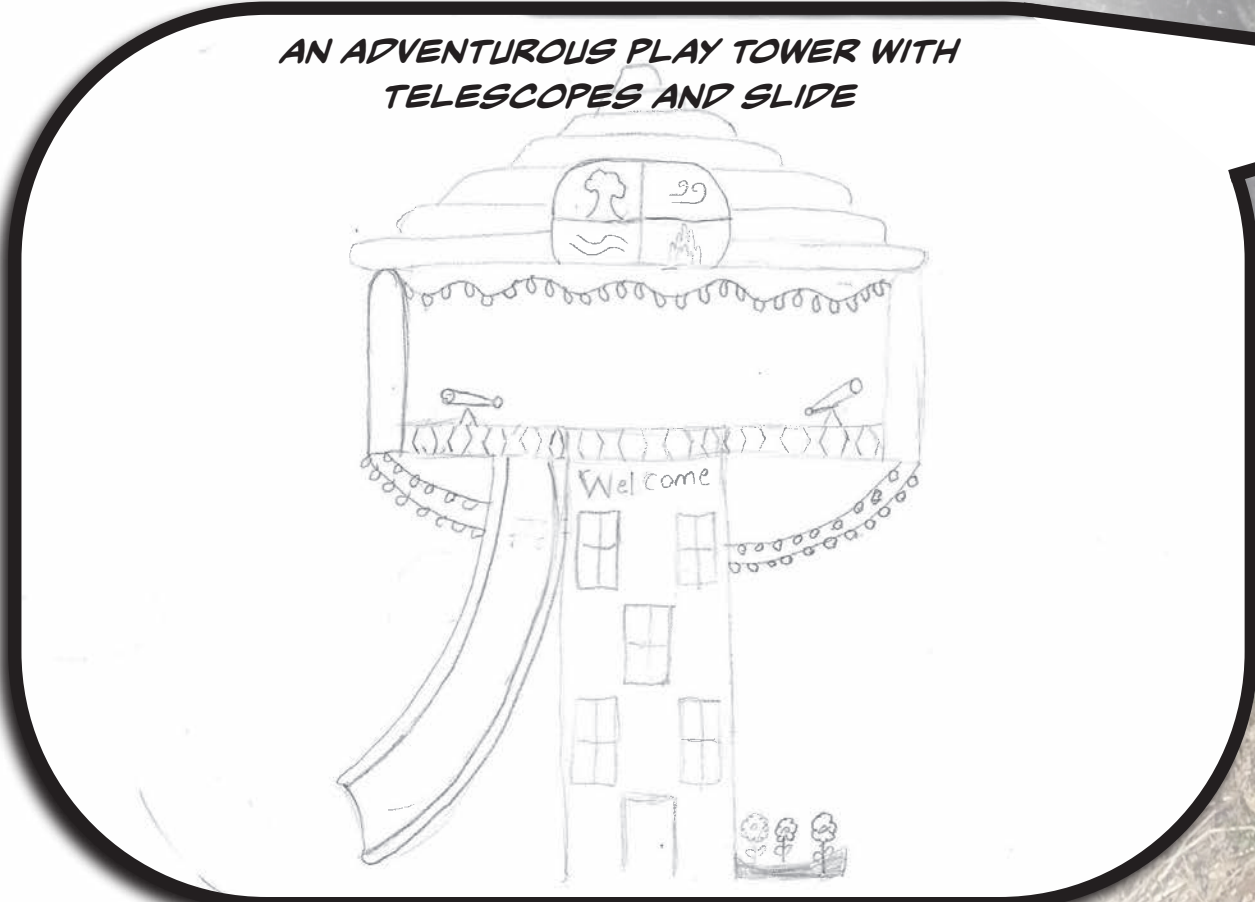


# Community Engagement

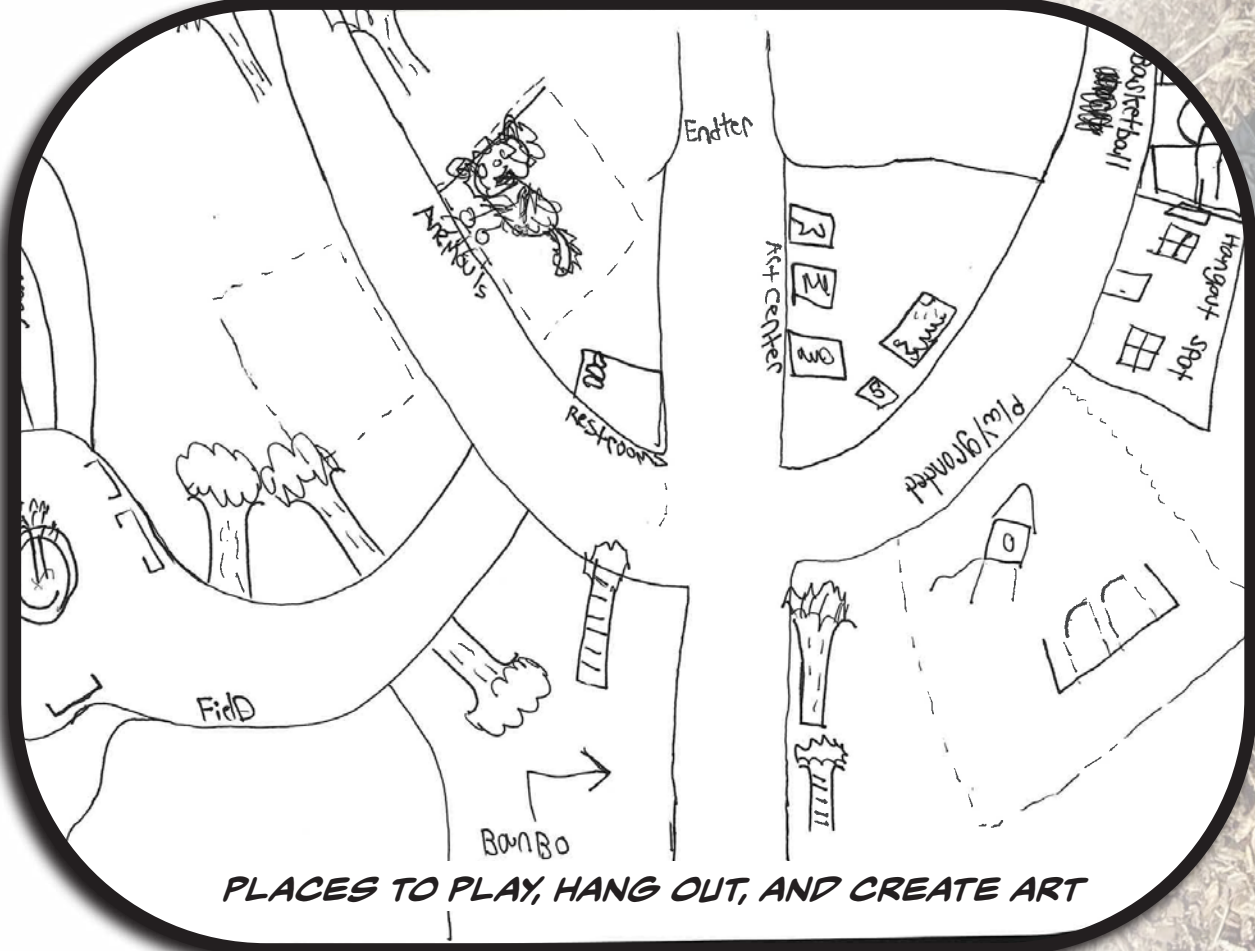
WHAT YOU WANT TO  
BUILD IN THE PARK?  
¿QUÉ QUIERES CONSTRUIR EN EL  
PARQUE?



A FOUNTAIN WHERE YOU CAN LEAVE  
WISHES



AN ADVENTUROUS PLAY TOWER WITH  
TELESCOPES AND SLIDE



PLACES TO PLAY, HANG OUT, AND CREATE ART





## **3 Master Plan**

**Overall Site Master Plan**

**Master Plan Enlargement**

**Phase 1 Park Improvements**

**Phase 1 Maintenance Plan**



# Overall Site Master Plan

- 1 Fall Line Trail Spur
- 2 Playgrounds and Restroom
- 3 Paved Multiuse Trail Loop
- 4 Sports Fields/Courts

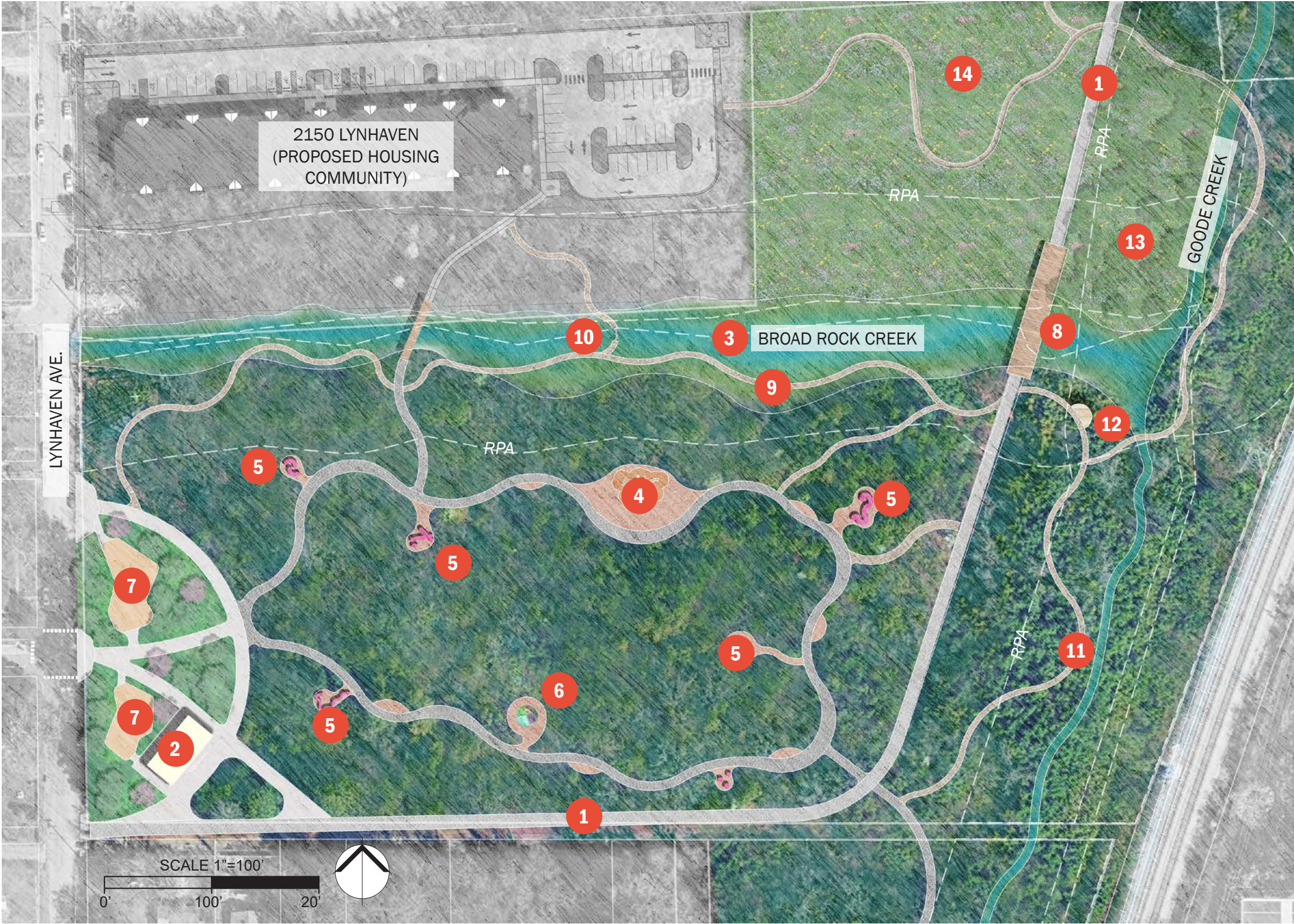
- ★ Primary Entrance
- ★ Secondary Entrance





# Master Plan Enlargement

- 1 Fall Line Trail Spur
- 2 Restroom
- 3 Stream Restoration
- 4 Creek Overlook Play Tower
- 5 Public Art Clearing
- 6 Medicine Wheel
- 7 Playground
- 8 Bridge Replacement
- 9 Creekside Trail
- 10 Stepping Stone Creek Crossing
- 11 Nature Trail
- 12 Creek Overlook
- 13 Reforestation Area
- 14 Lawn





# Phase 1 Park Improvements

- 1 Paved Multi-Use Trail
- 2 Restroom
- 3 Main Entrance Path
- 4 Public Art Clearing





# Phase 1 - Preliminary Park Maintenance Plan

Maintenance Notes:

Landscape Maintenance:

- ▶ Lawn areas to be mown and maintained according to City of Richmond Standard Practices.
- ▶ Stormwater bioretention area – maintenance involves weeding and pruning annually.
- ▶ Shrubs and trees at park entrance and in vicinity of the multi-use path to be pruned for structural and clearance reasons only and invasive plants to be controlled; planting bed areas to be top dressed annually with double shredded hardwood mulch.

Hardscape Maintenance:

- ▶ Site furnishings and public art to be inspected and repaired/replaced as needed.
- ▶ Signage to be cleaned and replaced as needed for maintenance and legibility.
- ▶ Trail to be cleared of vegetative debris following storms and as needed.

- Turf Lawn Maintenance (routine mowing + water to establishment)
- Tree and Shrub Care along Path (pruning for structural, clearance, and site lines only, and invasive plant control)
- Plant Bed Maintenance (seasonal weeding, pruning, mulching + watering for establishment)
- Bioretention Area Maintenance (Ensure basin is clear of trash and debris; replace plants as needed; seasonal weeding)





## **4 Character Imagery**

**Site Elements**

**Reuse of Existing Site Elements and Permeable/  
Stormwater Options**

**Landscape**



# Site Elements

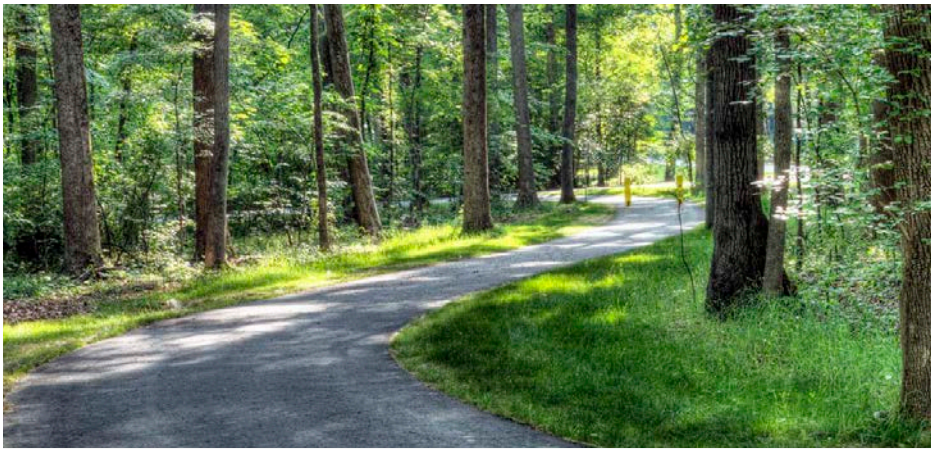


Public Art in a Natural Setting



Park Entrance with Promenade and Art

## Art



Multi-use Forest Trail



Opportunities to Interact with the Creek



Stream Restoration

## Nature



Renovated Bridges



Adventurous Nature Inspired Play



Spaces to Just Hang Out

## Site Elements



# Site Elements



Prefabricated Bathroom Facility



Additional Amenities and Furnishings





# Site Elements



Signage



Medicine Wheel Art Installation



Structurally Sound Bridge



Furnishings and Art



Painted Benches and Art

## Reuse of Existing Site Elements



Permeable Pavers



Permeable Asphalt Trail



Trailside Vegetated Swale

## Permeable Paving and Stormwater Opportunities



# Landscape



Meadow Habitat



Reforestation

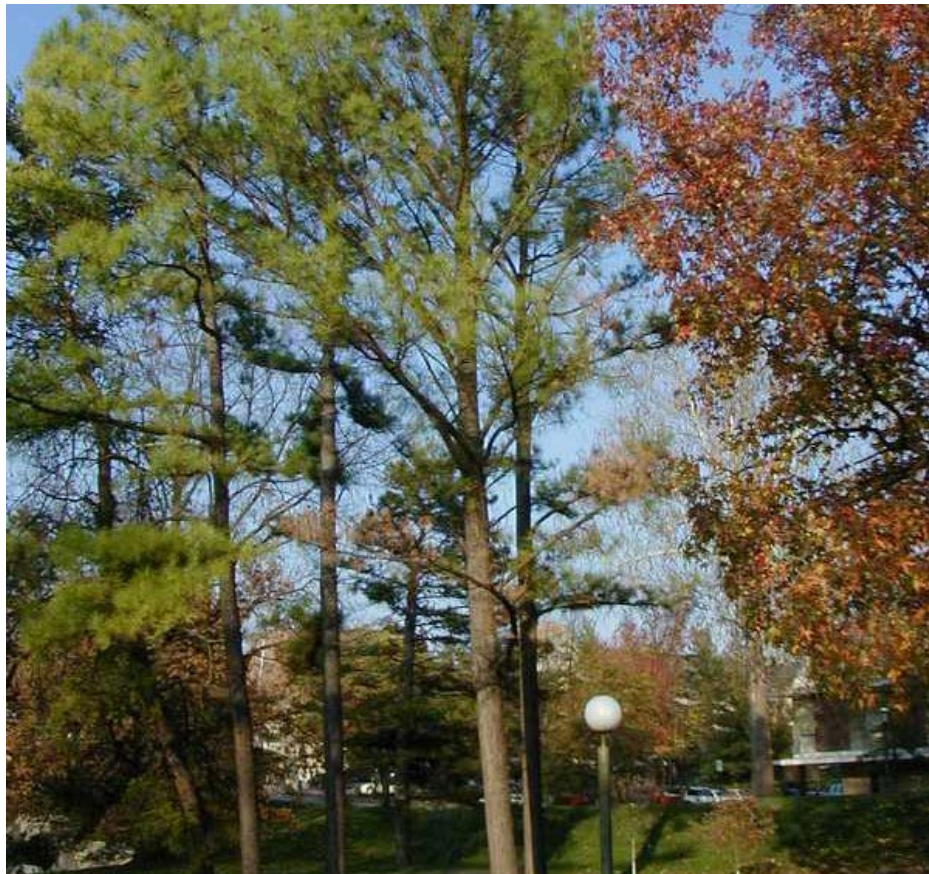


Invasive Plant Management

## Landscape Restoration



White Oak



Loblolly Pine



Pignut Hickory

## Trees



## **5 Project Schedule**



# Project Schedule





# Questions?

---

Project for:



DEPARTMENT OF  
**PARKS, RECREATION  
AND COMMUNITY  
FACILITIES**

Project by:



**TIMMONS GROUP**